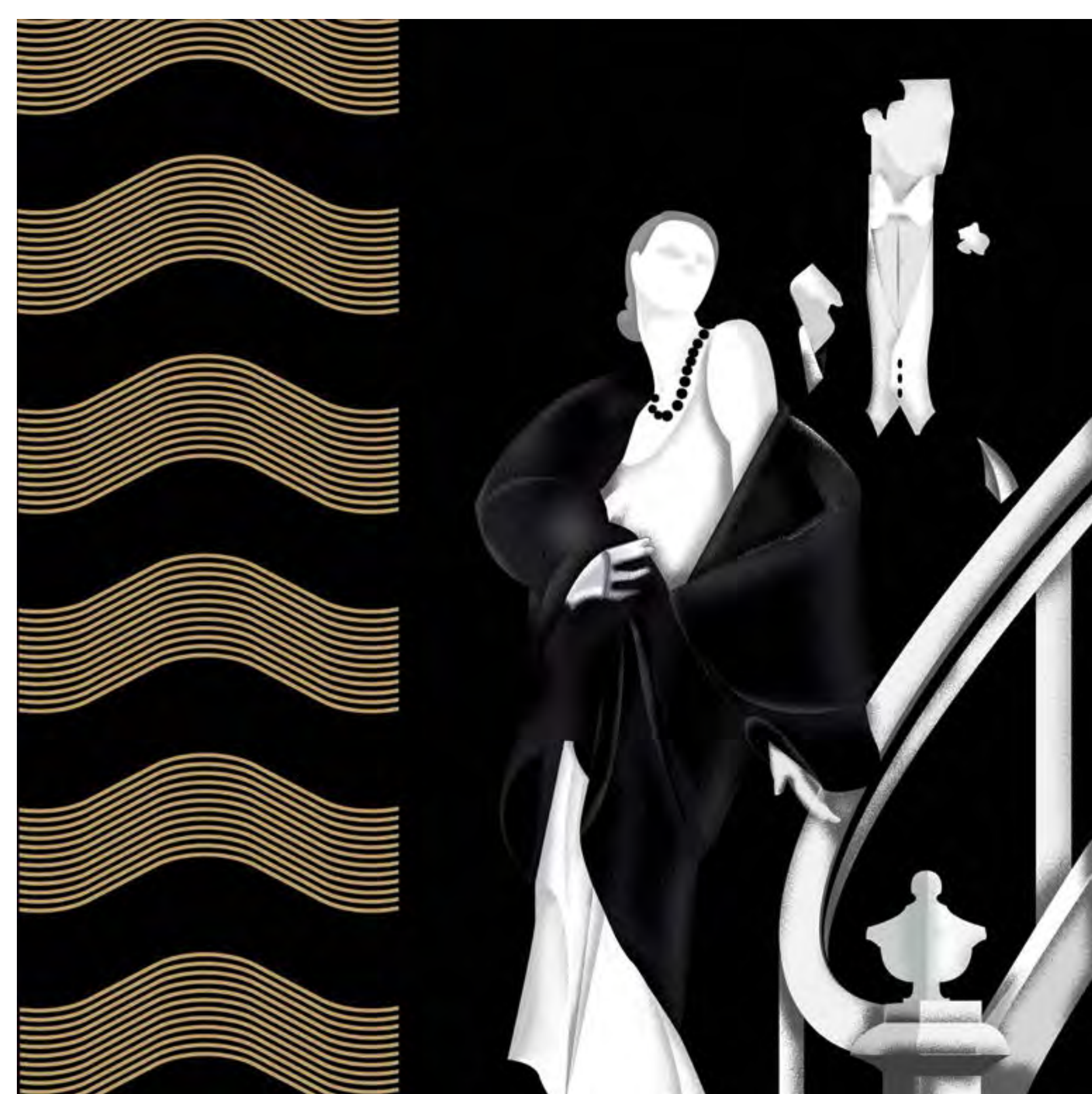




KONARK  
BELVEDERE

*Koregaon Park*

GREAT STRUCTURES  
STAND ALONE.



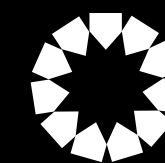
## WINGS, PHASES, SOCIETIES, GATED COMMUNITIES & TOWNSHIPS.

IT'S TIME YOU STEPPED INTO THE ELITE CIRCLE

*An ode to Miami Art Deco architecture,  
Belvedere is a striking structure accentuated by contemporary art deco elements.  
The structure is further enhanced at night with elegant lighting design.*

ONE BUILDING.

ELEVEN FLOORS. ELEVEN APARTMENTS.



KONARK BELVEDERE

*Koregaon Park*





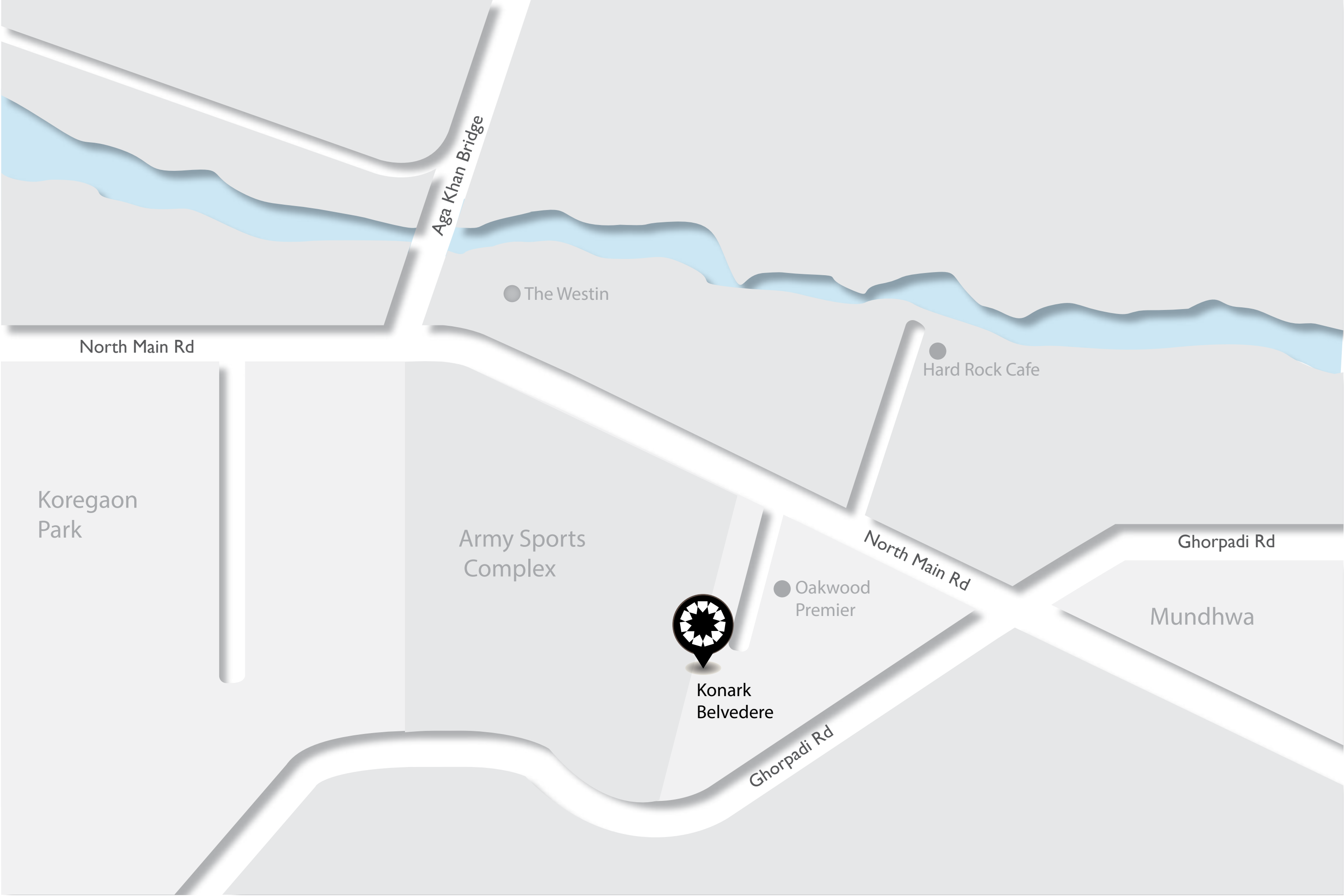


## PUNE'S BEST ADDRESS GETS BETTER.

### THE LOCATION

*A quiet address in the middle of Pune's premium location.  
Situating on a quiet stretch of road, opposite to Oakwood Premier, with an unobstructed view of the army grounds, Konark Belvedere is by far one of the best location that Koregaon Park has to offer. It gives you the best of both the worlds: a peaceful location, yet easy access to the pulsating city life.*





Aga Khan Bridge

● The Westin

North Main Rd

● Hard Rock Cafe

Koregaon Park

Army Sports Complex

North Main Rd

Ghorpadi Rd

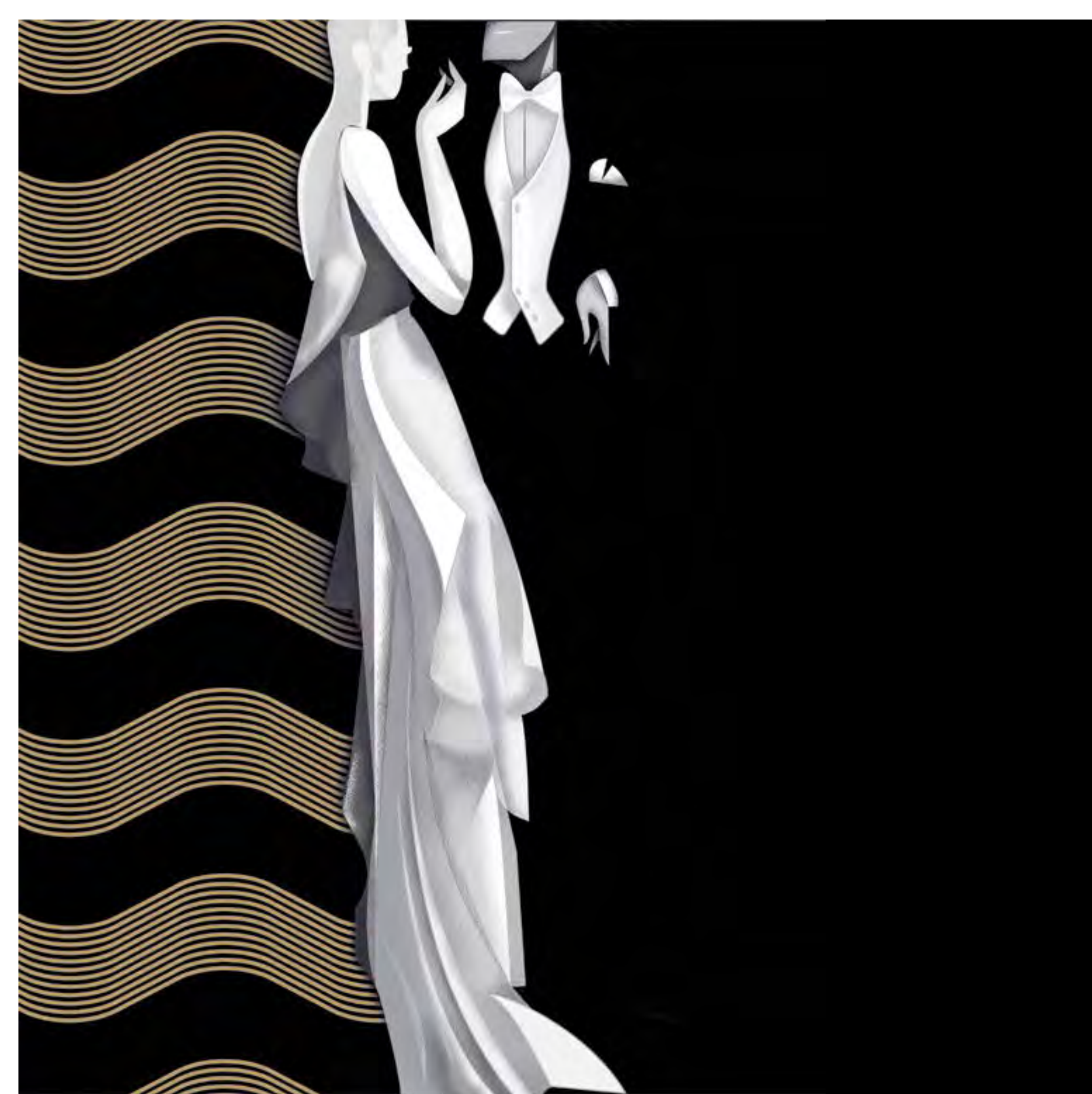
● Oakwood Premier

Mundhwa



Konark Belvedere

Ghorpadi Rd



## 12 IS A CROWD.

THE ARCHITECTURE

*Inspired by the art deco architecture, Konark Belvedere is a masterpiece conceived by masterminds: Arch. Hafeez Contractor and interiors by Drishti. Timeless and Unique, with just one apartment per floor, 11 storeys of unparalleled exclusivity awaits you.*













## THE ART OF VASTU.

THE APARTMENTS

*Your apartment gives you a choice of 4 bedrooms. Terraces adjacent to three bedrooms and large bay windows, lets you enjoy the peace and solitude of your natural surroundings. Innovative use of vastu brings you unmatched living spaces comprising of 5,600 sq.ft. of supreme perfection.*



# GATEWAY TO OPULENCE.

GRAND LOBBY

*Concierge Desk / Waiting Lounge*

*Air Conditioning / 2 High Speed Elevators*









A modern living and dining area featuring a large window with a view of a city, a wood-paneled wall, a white sofa, a coffee table, and a bar area with two stools. The room is illuminated by recessed ceiling lights and floor lamps.

## MAKE A STATEMENT.

LIVING & DINING

*Marble Flooring / Attached Terrace*

*Air Conditioning / Home Automation*







A modern master bedroom with a large window, a bed, a sofa, and a desk. The room features a light-colored wall with a large TV, a wooden desk with a laptop, a white sofa, and a bed with a dark headboard and a grey blanket. The room is illuminated by recessed ceiling lights and a bedside lamp. The window offers a view of a balcony and a sunset.

## LIE IN THE LAP OF LUXURY.

MASTER BEDROOM

*Marble Flooring / Attached Terrace*

*Air Conditioning / Home Automation*

*Entrance Foyer for Privacy*



# SINK INTO INDULGENCE.

MASTER BATHROOM

*Bath Tub / 4 Fixture Toilet*

*Walk in Wardrobe*







INGREDIENTS  
FOR LUXURY.

KITCHEN

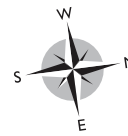
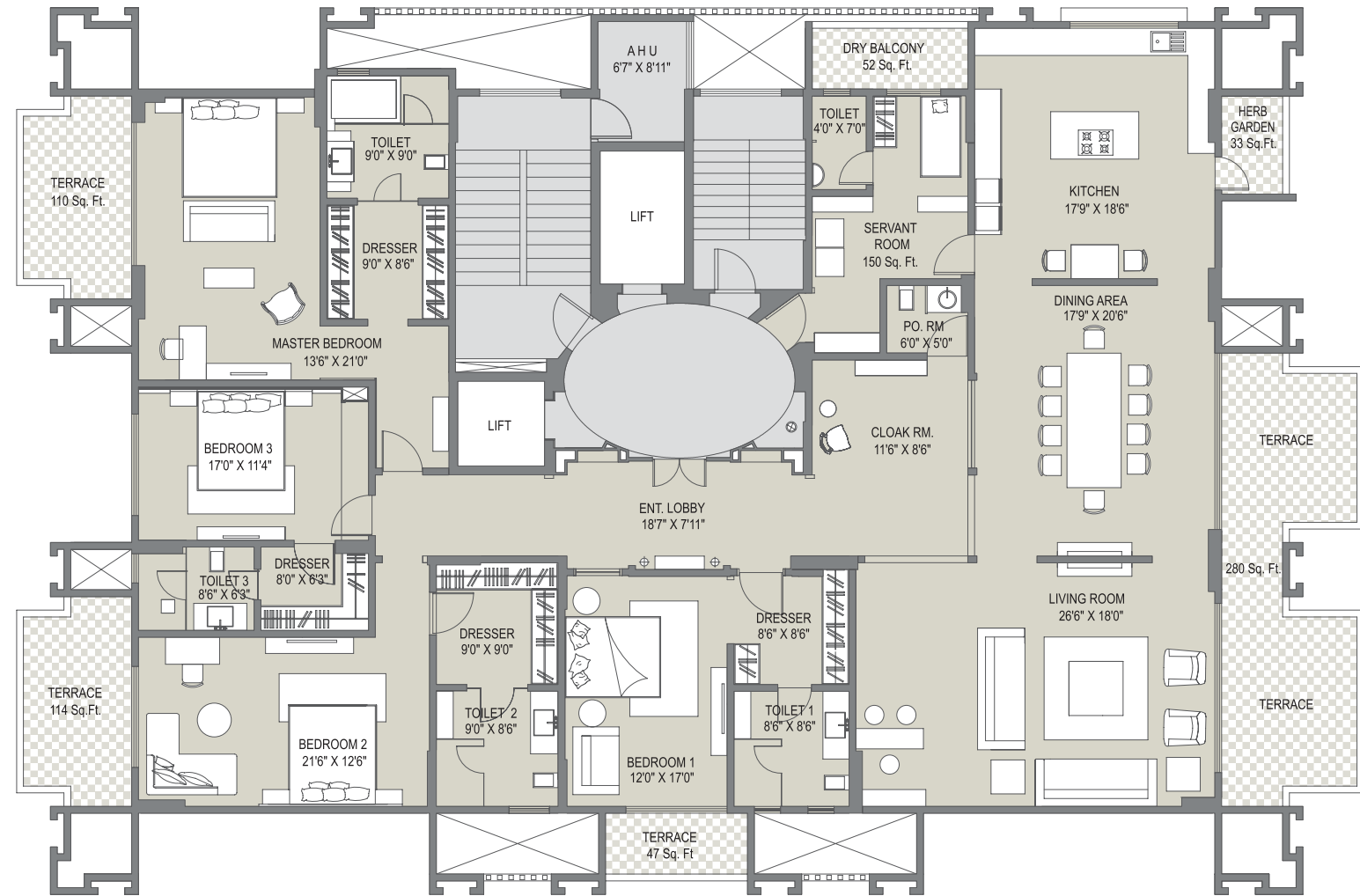
*Modular Kitchen*

*Herb Garden*



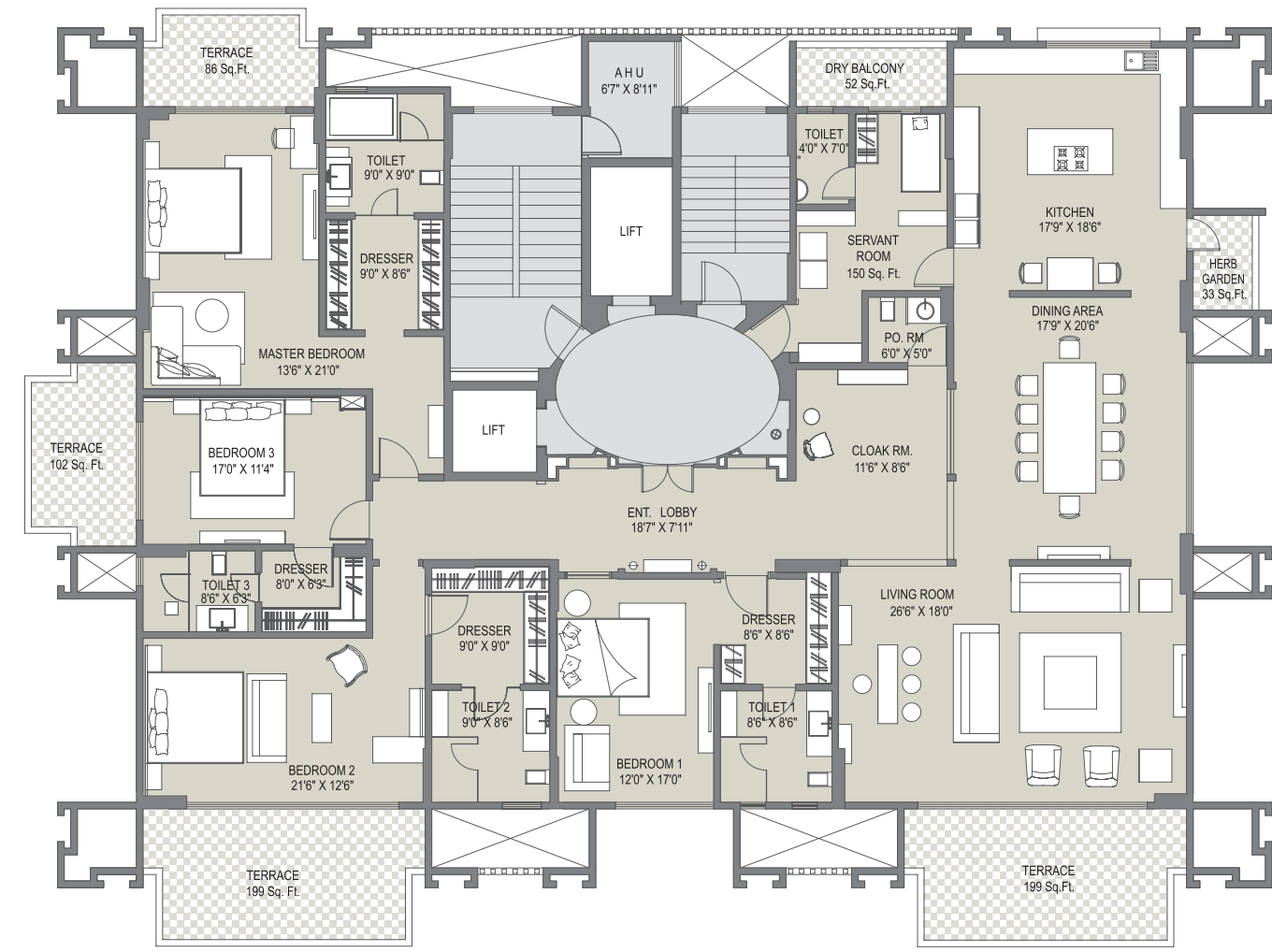
# FLOOR PLAN 1

APARTMENT NO 1, 3, 5, 7, 9, 11



# FLOOR PLAN 2

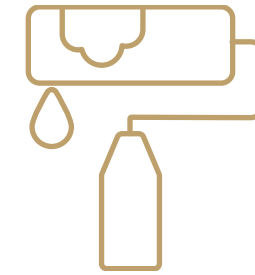
APARTMENT NO 2, 4, 6, 8, 10





# APARTMENT AMENITIES.

## FEATURES



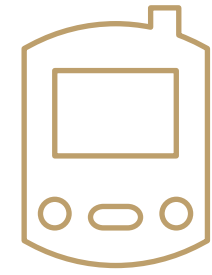
### WALL FINISH

*Gypsum finish walls with luster paint*



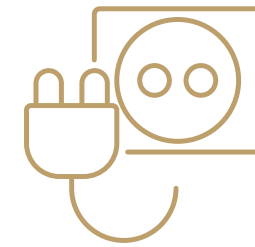
### GENERATORS

*100% power back-up*



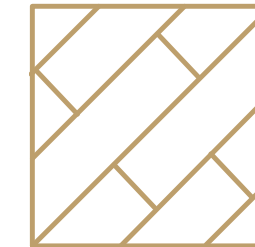
### HOME AUTOMATION

*State-of-the-art automation systems*



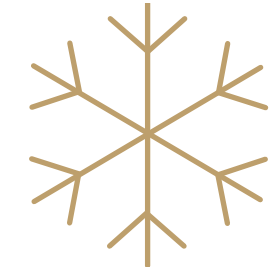
### ELECTRICAL

*Elaborate electrical layout*



### FLOORING

*A mix of tiles, marble and wooden flooring*



### AIR CONDITIONING

*Fully air conditioned home*



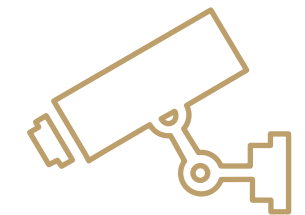
### CONNECTIVITY

*Wi-Fi ready home*



### WINDOWS

*Large bay windows*



### SECURITY

*CCTV cameras in all common areas*



## SITE ADDRESS

*Survey No. 81,  
Near Oakwood Premier Hotel, Koregaon Park, Pune - 411001*

## HEAD OFFICE

*205 Gera 77, Near Bishop's School, Kalyani Nagar, Pune - 411 006*

## FOR INQUIRIES

*+91 9011144000 | +91 9011544000 | +91 9011744000  
sales@kariadevelopers.com*

## A PROJECT BY



**Mint**

*This brochure is purely conceptual and is not a legal offering nor will it be part of any binding document. All furnishing shown on all floor plans are for illustrative purposes only. The developer reserves the sole rights to amend the number of floors, number of units, layout, plans, elevation, colour schemes, specifications and amenities etc., without prior notice. All dimensions are approximate and subject to construction variances and approvals.*



