

AMRAPALI GROUP

Developing India

AMRAPALI GROUP

AMRAPALI
HI-TECH *city*
JAIPUR

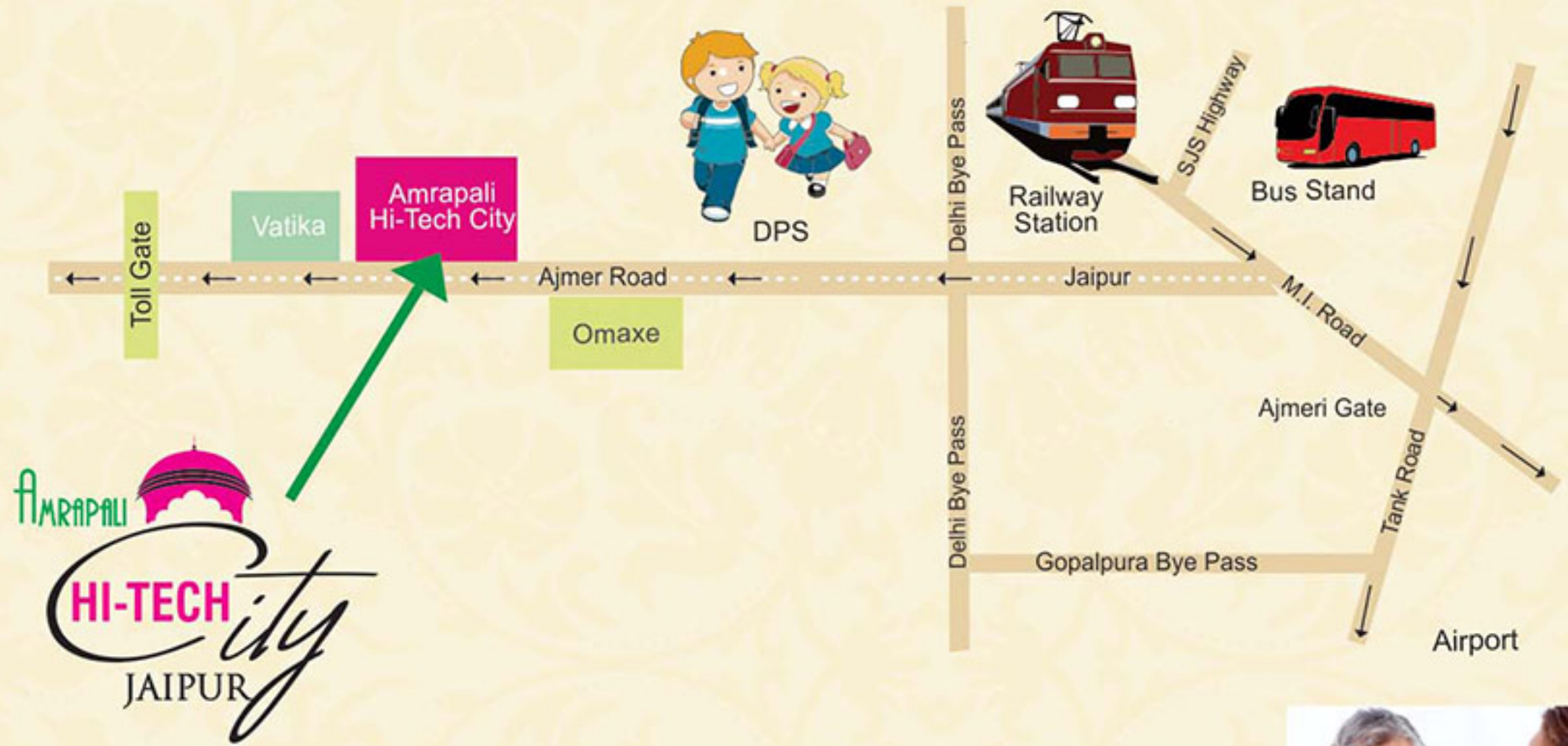


WELCOME TO JAIPUR A HERITAGE CITY
SOON TO BE CONVERTED INTO HI-TECH CITY



EXPERIENCE THE EXTRAORDINARY

Amrapali Hi-Tech City introduces a select club of individuals to the lavish lifestyle of the international elite. It showcases manicured landscaped which nestle with your abode of luxuries. Designer water bodies and exquisite stone are nestle the jewel called Hi-Tech City and crown your glory as a resident with majestic privileges.



PRIZED AND
PREMIUM LOCATION
OF THE PINK CITY
JAIPUR



Amrapali Hi-Tech City is tucked away in the peace and quiet of a prized locale, in historic Jaipur, which not only gives you a serene environment, it places you in closed proximity to all the important business and leisure hubs of the city.

Part of integrated township | Power back-up | Round the clock water supply.







The stunning interiors welcome you into the very heart of luxurious living, with thoughtful nuances which form the keynotes of abounding grace and grandeur.
Well ventilated living room • Generous bedrooms with attached bathroom • Superior fitting in all rooms • Vaastu friendly layout

INTERIOR ARTISTRY AT ITS FINEST...

The moment you make an entrance into your Hi-Tech City Home, It envelopes you with the warmth and comfort of a pristine heaven. There are no staid areas and wherever your roving eye wanders, it is heavenly beauty which it encounters.

You can personalize the space, once you move in and allow your home to make an impacting interior statement. Indeed the feeling of wellness and grandness suffuses your home like a running motif embroidered on the fabric of luxuries



THE OUTDOORS
OFFER SCENIC VIEWS
AND THE INDOORS ROMANCE
YOUR VIEWPOINT





A SECURE HEAVEN. A SCENIC ABODE...

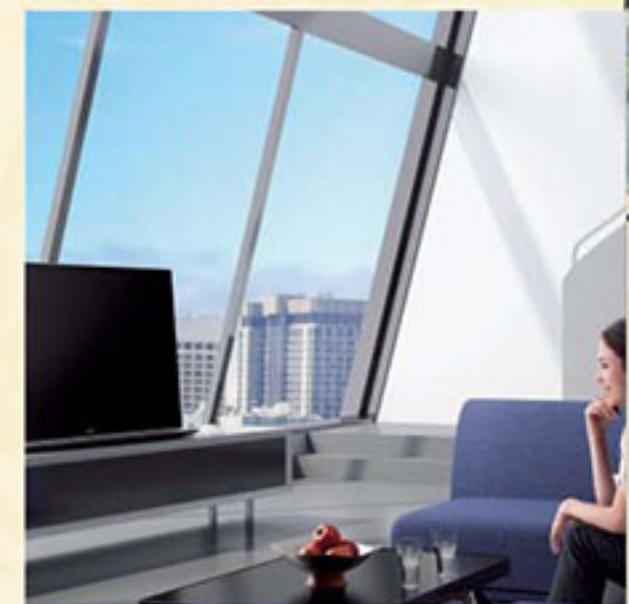


Hi-Tech City is a self contained gated community with hi end secure environment. The world is green, prosperous and leaves a sense of assured peace of mind. All entry and exit points are manned by trained security personnel and round the clock CCTV monitoring is the norm.

The Green Areas at Hi-Tech City are no less extraordinary. Manicured green-scapes nestle scent gardens full of seasonal blooms. The green gardens have a separate kids play zone, yoga park and emerald elders sitting area. In short, you would love to be here, be it indoors or outdoors



YOUR PIECE
OF EARTH COMES
WITH YOUR
PEACE OF MIND





The architectural statement of Hi-Tech City encompasses discerning hopes, dreams and aspirations. It's a unique structure slated to earn a pride of place in Jaipur, as a distinguishing landmark.

- **24x7 Security** • **Kids play area** • **Two elevators of high capacity**



R O A D 100'-0" W I D E

R O A D 40'-0" W I D E



SPECIFICATIONS

STRUCTURE

Earthquake resistant RCC framed

LIVING/DINING/ LOBBY PASSAGE

FLOORS: Vitrified/Equivalent

WALLS: OBD paints

CEILING: POP cornice and OBD paint.

BEDROOM

FLOORS: Flooring with vitrified tiles/ equivalent and laminated wooden flooring in Master Bedroom

WALLS : OBD paints

CEILING: POP cornice and OBD Paint

BALCONY

FLOORS: Antiskid ceramic tiles

WALLS & CEILINGS : OBD Paints

KITCHEN

WALLS: Designer Ceramic tiles upto 2ft above counter.

FLOORS: Anti skid ceramic tiles/ vitrified tiles

COUNTERS: Granite working platforms

FITTINGS/ FIXTURE: CP fittings, stainless steel sink of standard make.

WOOD WORK: Semi modular Kitchen.

TOILETS

WALL: Designer ceramic tiles upto 7 feet.

FLOORS: Anti skid Ceramic tiles/ vitrified tiles.

FITTINGS / FIXTURE: ISI marks fittings, standard chinaware fixtures and fittings for geyser water supply.

WATER: Hot and cold water pipeline provision

DOORS

ENTRANCE DOORS: Hardwood frame with polished skin door.

INTERNAL DOORS: Painted/Polished wooden doors

WINDOWS : UPVC

WATER: Drinking water treatment facility by individual R.O System

LIFT LOBBY

Floors: Designer flooring in Marble / Tiles

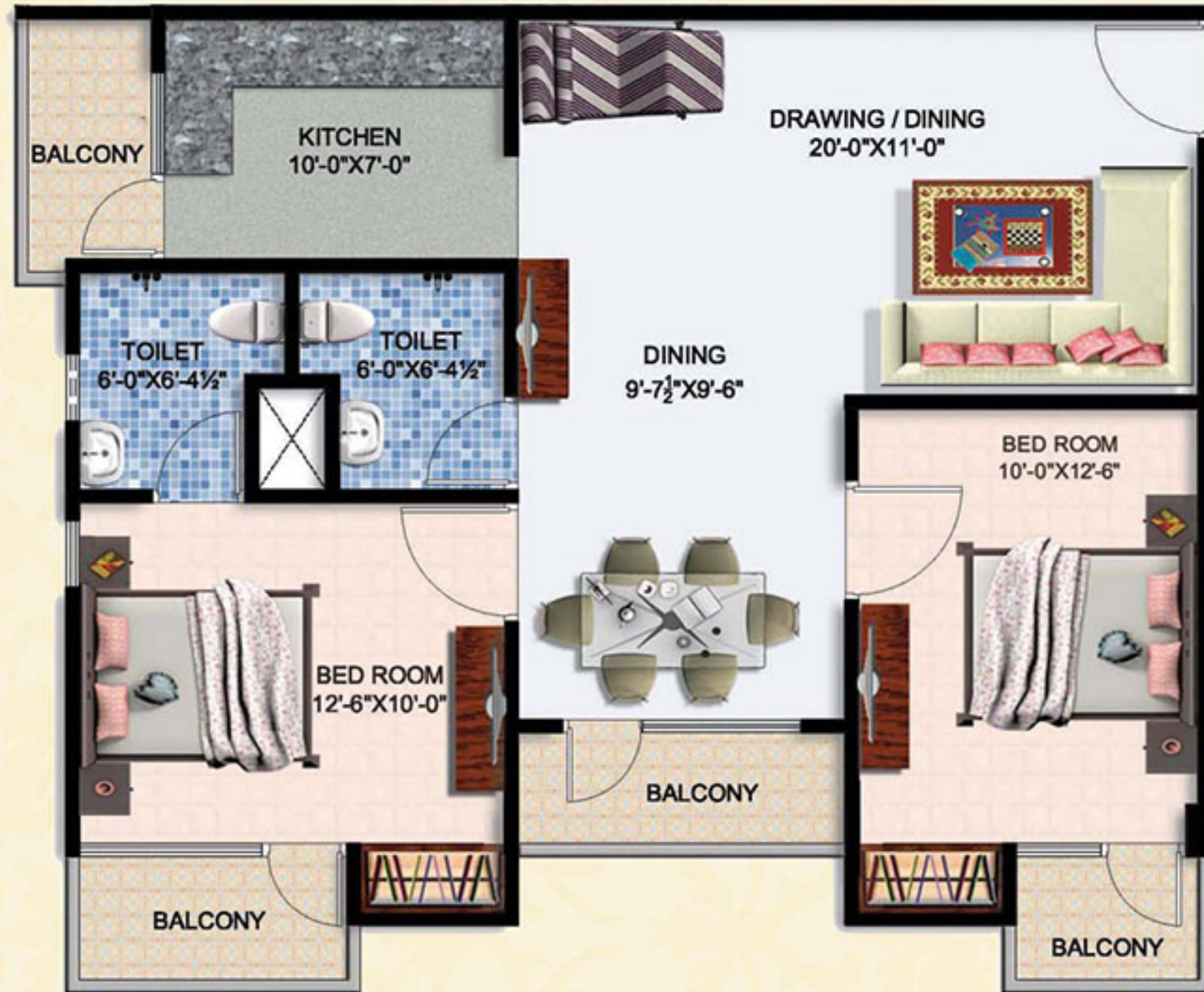
WALLS: Tile cladding and texture paint combination

ELEVATOR : High speed elevator

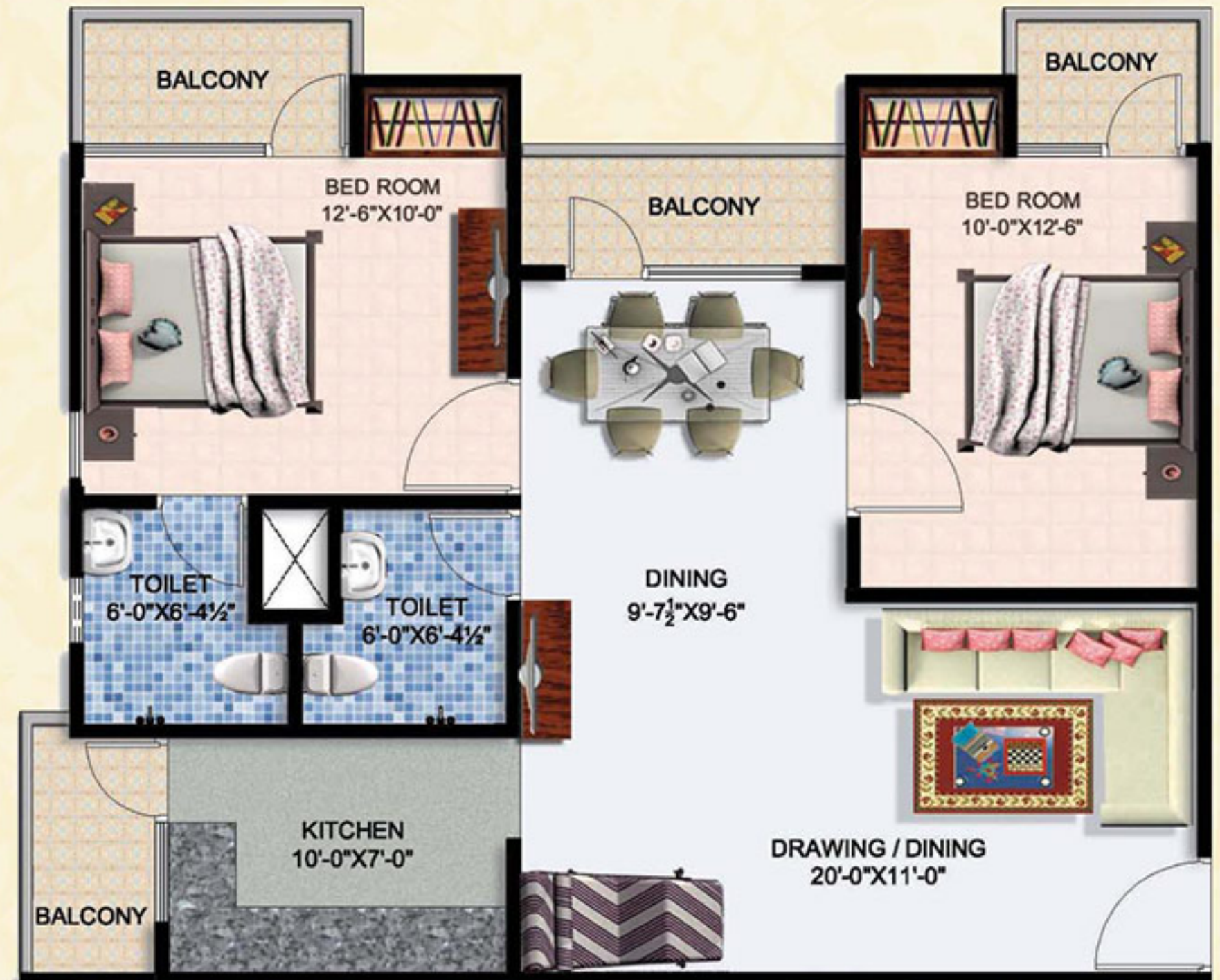
ELECTRICAL

Modular switches Power backup provision.

2 BEDROOM + 2 TOILET
 SUPER AREA : 1205 SQ.FT.
UNIT-1



2 BEDROOM + 2 TOILET
 SUPER AREA : 1205 SQ.FT.
UNIT-2



3 BEDROOM + 2 TOILET
 SUPER AREA : 1270 SQ.FT.
UNIT-3



3 BEDROOM + 2 TOILET
 SUPER AREA : 1175 SQ.FT.
UNIT-4



3 BEDROOM + 2 TOILET
SUPER AREA : 1210 SQ.FT.
UNIT-5



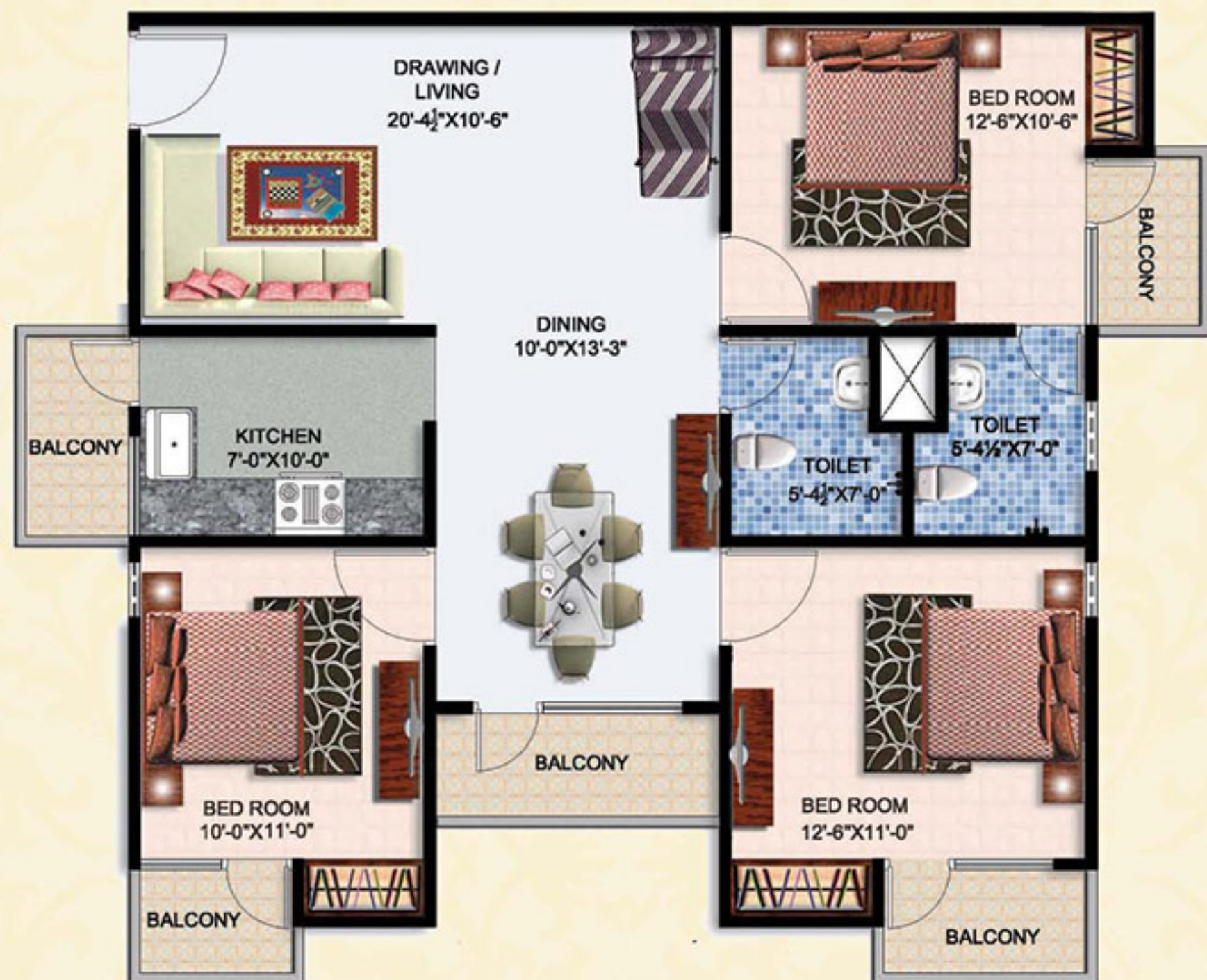
3 BEDROOM + 2 TOILET
SUPER AREA : 1515 SQ.FT.
UNIT-6



3 BEDROOM + 2 TOILET

SUPER AREA : 1500 SQ.FT.

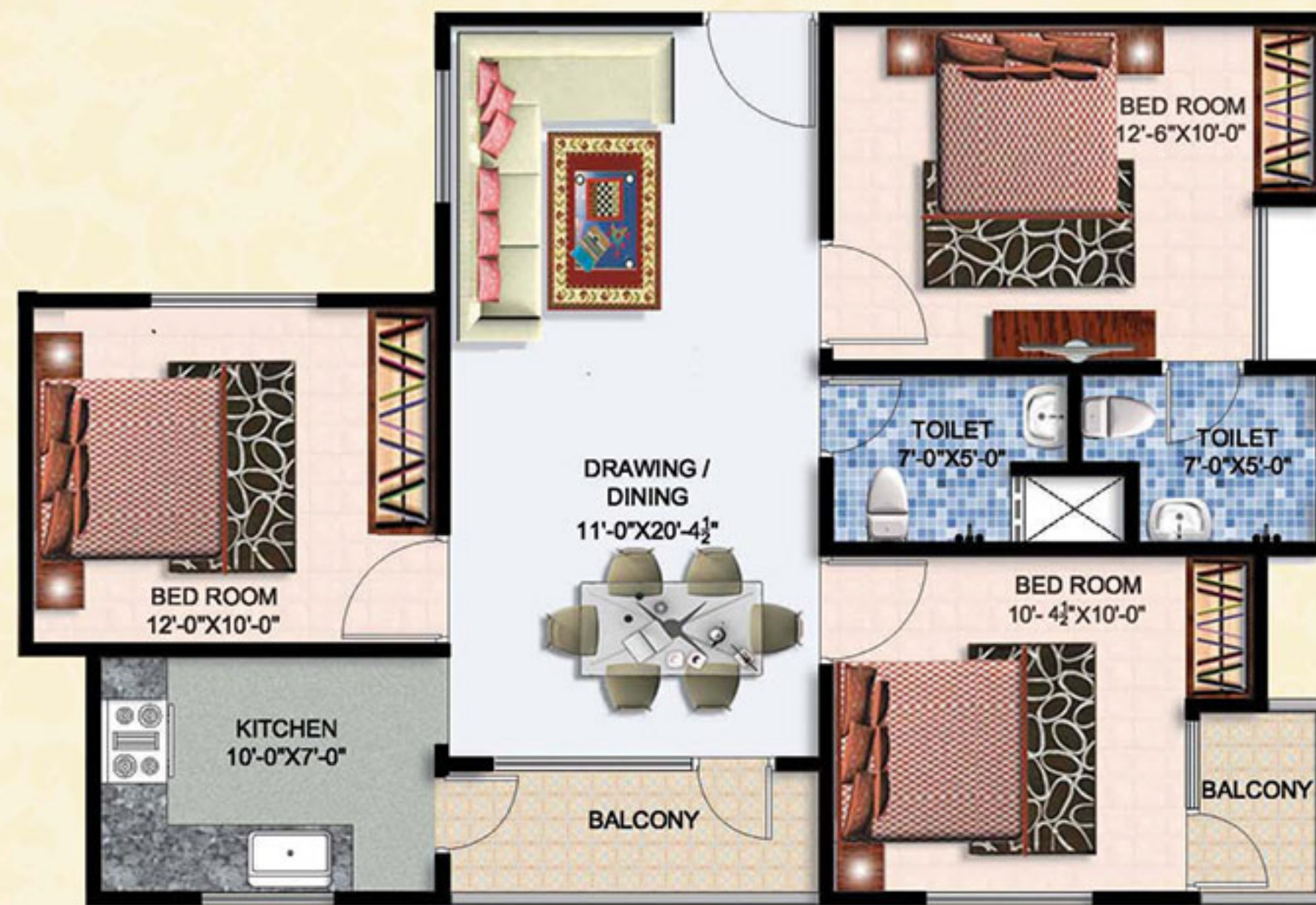
UNIT-7



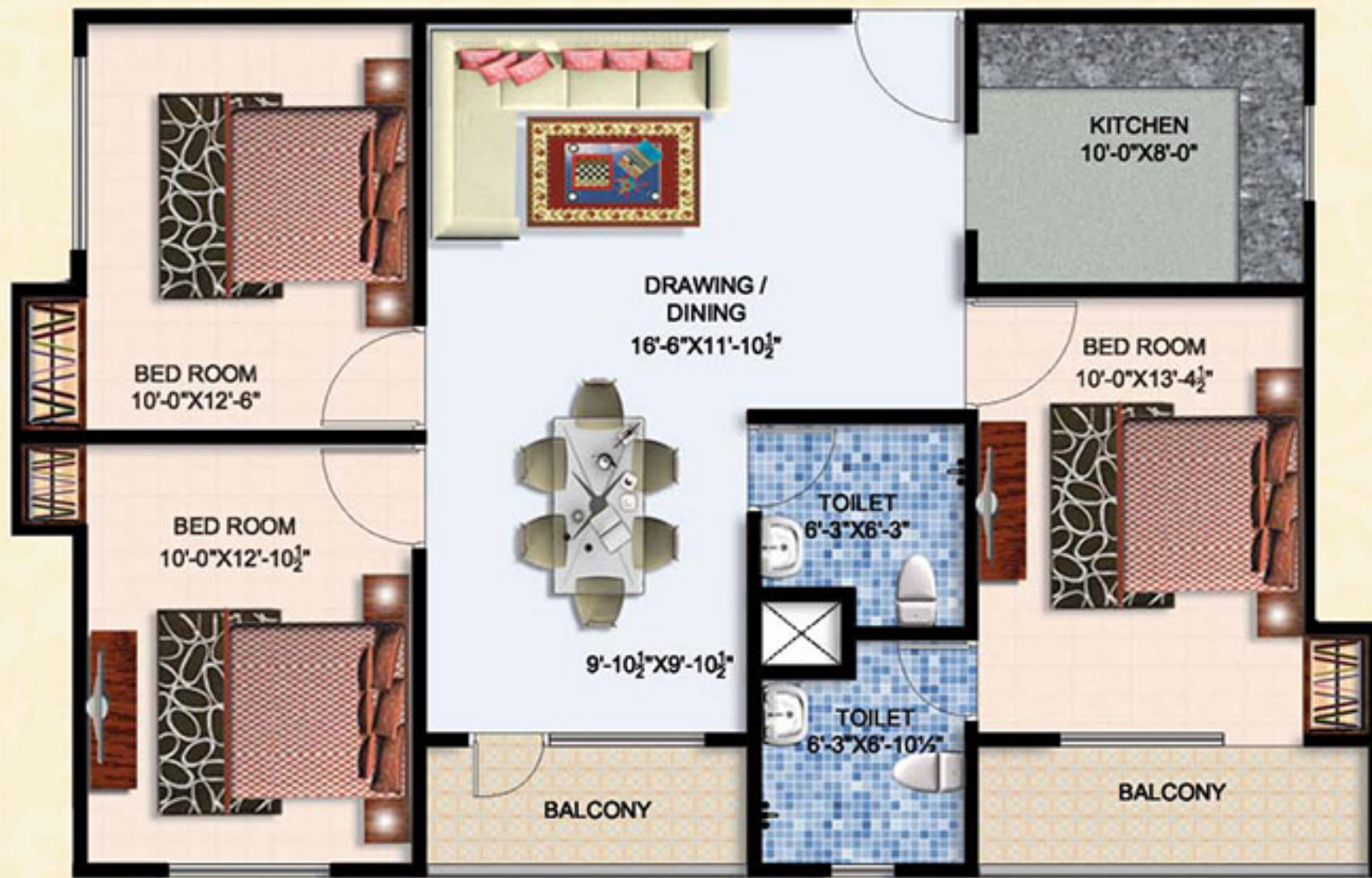
3 BEDROOM + 2 TOILET

SUPER AREA : 1170 SQ.FT.

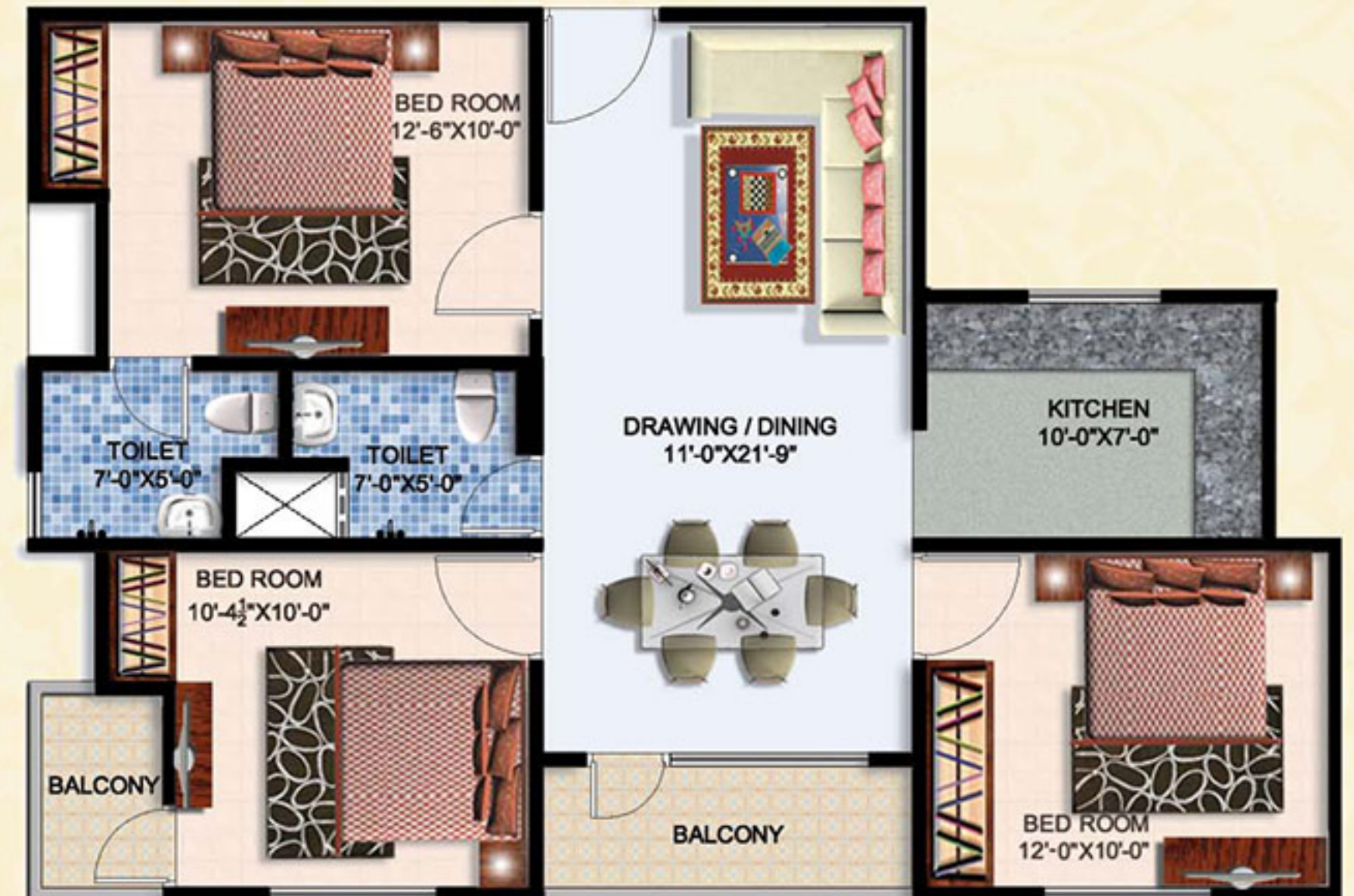
UNIT-8



3 BEDROOM + 2 TOILET
 SUPER AREA : 1340 SQ.FT.
UNIT-9



3 BEDROOM + 2 TOILET
 SUPER AREA : 1170 SQ.FT.
UNIT-10



24 Cities More Than 50 Projects

Spreading Smiles Across India

Various aspects of Real Estate and Construct on have been explored by Amrapali Group to such a grand extent that it has become a brand name. In the last couple of year Amrapali Group has contributed in the phenomenal growth of real estate and insfrastructure industry with may turnkey solutions through multifaceted residential and commercial projects.The group fully understands the importance of quality and ensures the best of technology, planning, design construction for all its projects. This has resulted in the transformation of its projects-Amrapali Green, Amrapali Royal, Amrapali Village, Amrapali Awadh, Amrapali Vaishali, Amrapali Grand Apartments into Landmarks.

COMPLETED PROJECTS



Amrapali GRAND



Amrapali GREEN INDIRAPURAM



Amrapali VILLAGE INDIRAPURAM



Amrapali EDEN PARK



Amrapali MANESAR

CONSTRUCTION FULL SWING



Amrapali COSMOS, KOCHI

READY TO MOVE IN



Amrapali SILICON CITY- NOIDA



Amrapali SAPPHIRE - NOIDA



Amrapali ZODIAC- NOIDA



Amrapali PLATINUM, NOIDA

CONSTRUCTION FULL SWING



Amrapali VRINDAVAN



Amrapali GOLF HOMES
G. NOIDA (WEST)



Amrapali LEISURE VALLEY
G. NOIDA (WEST)



Amrapali CRYSTAL HOME
NOIDA

Our Presence: • Noida • Greater Noida • Gurgaon • Jaipur • Raipur • Indore • Kochi • Nagpur • Lucknow • Bihar
Corporate Office: C-56/40, Sec. 62, Noida Ph: 0120-4055555 Fax: 0120-4233556 E-mail: mkt@amrapali.in SMS "Amrapali" to 56677

VILLAS • APARTMENTS • TOWNSHIPS • MALLS & MULTIPLEXES • IT PARKS • SEZs • HOTELS • HOSPITALS • EDUCATION • FMCG (MUM's)