

HARI SANSKRUTI

हरी संस्कृती



A warm tribute to good living

Spaces that you can call home, home that you share with your loved ones, home where you form memories of a lifetime.



Setting a new trend in good living.

HARI SANSKRUTI, the essence of elegance, is a landmark project developed by KARDA Group at Nashik Road. It re-defines the concept of intrinsic living. The Group is known to provide planned and effective living solutions. The majestic complex comprises of five imposing multistoried buildings - STUTI, SHLOKA, VEDANTA, UPASANA & KIRTAN. This project offers well designed and aesthetically laid out flats with modern amenities and facilities that make living a pleasure.





*Move into the world
that's specially created for you.*

HARI SANSKRUTI is a thoughtfully planned project that exudes intense precision and passion in shaping your dream of a perfect home for you and your loved ones. It comprises of residential flats & shops. The buildings are well planned with flats that are designed to make optimum utilization of spaces. This complex is ideally located in an area with close proximity to the Nashik Road railway station, highway, schools, colleges, hospitals and shopping areas that makes it a convenient choice for all. Now fulfilling your dream of a 'home' is a reality with Hari Sanskruti.





SHLOKA

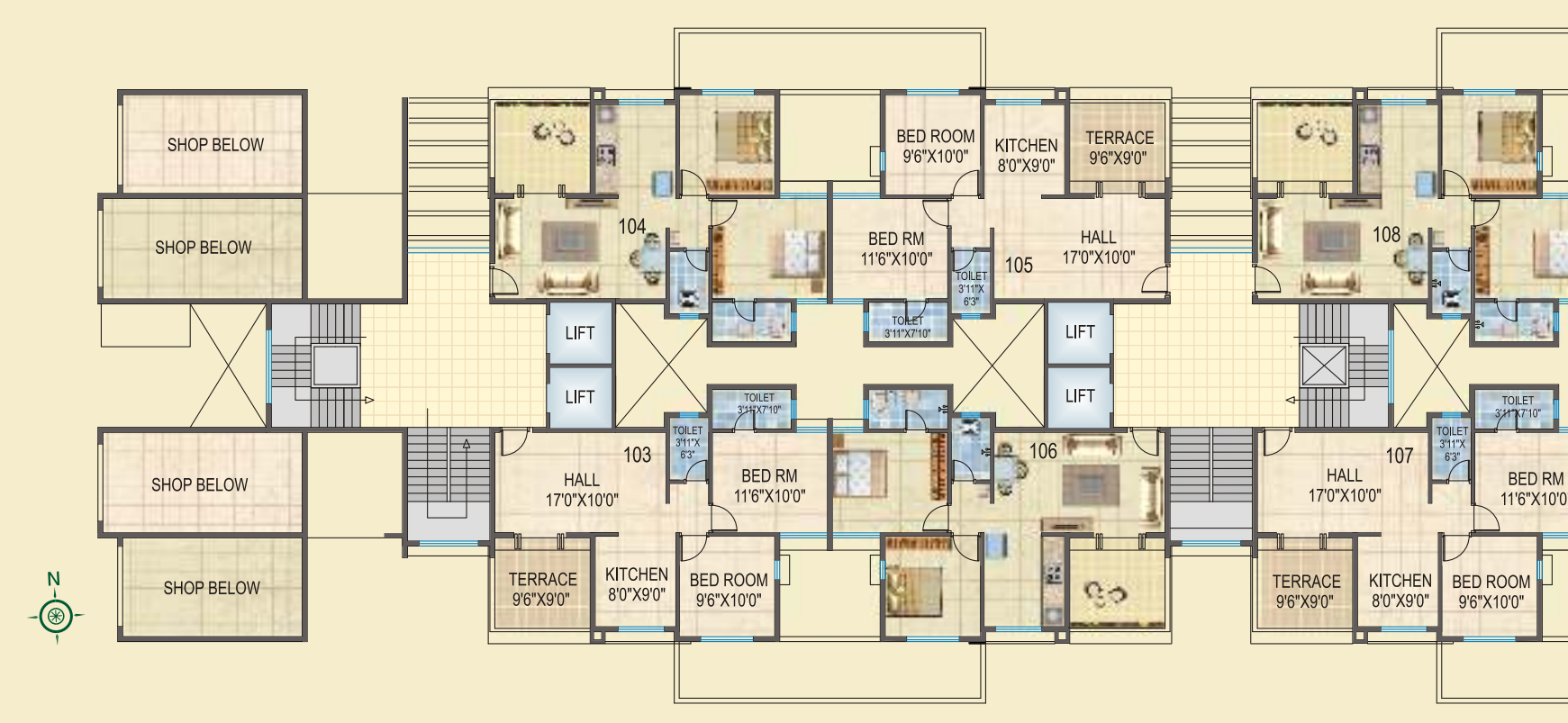


Exclusive Spaces...

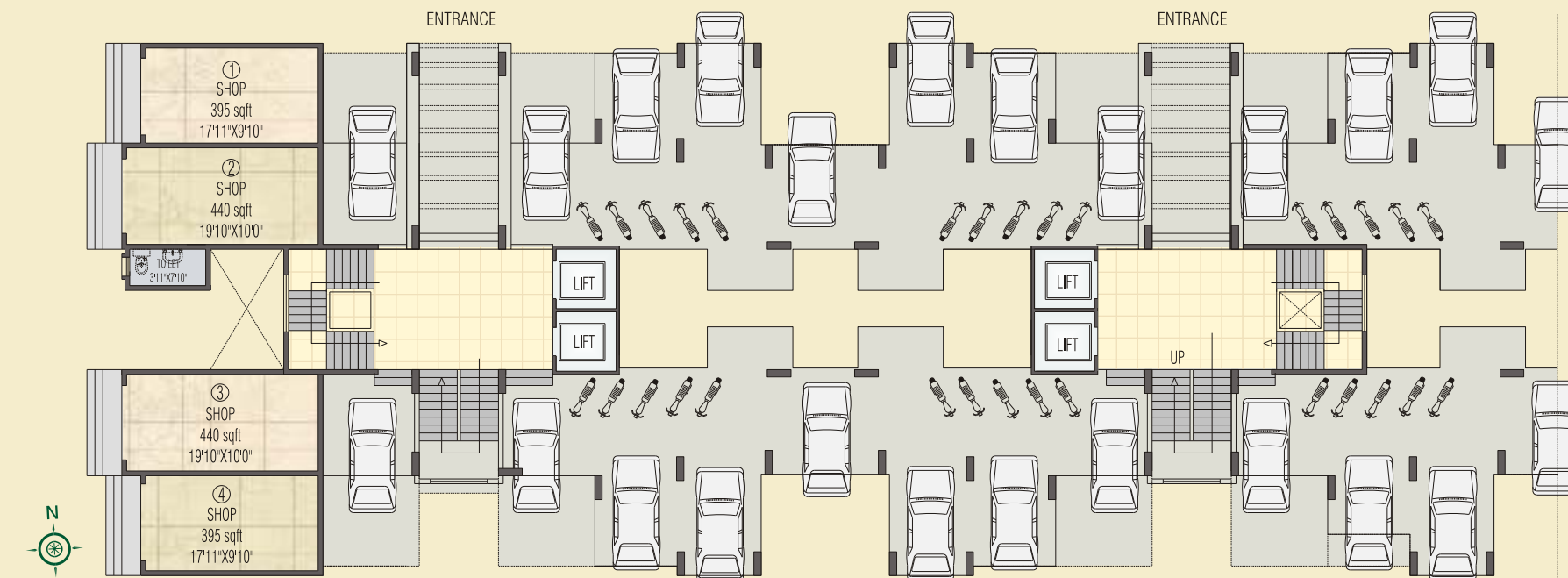
Hari Sanskruti offers shops in two of its buildings - SHLOKA and VEDANTA that offer a great opportunity for display and retail. The shops span across ground and first floors and are well planned and harness available space efficiently and effectively.



SHLOKA



FIRST
FLOOR
PLAN



GROUND
FLOOR
PLAN



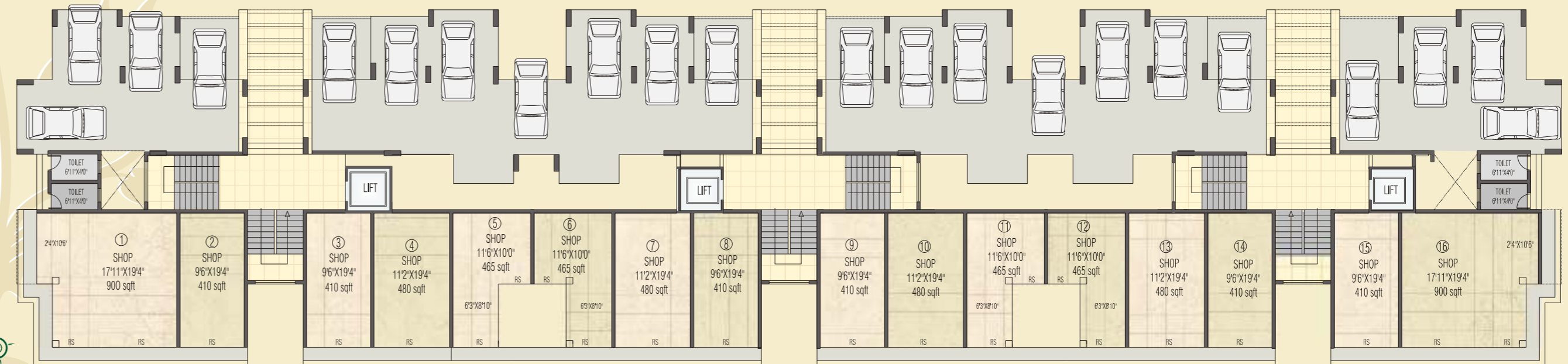
VEDANTA



VEDANTA



FIRST
FLOOR
PLAN



GROUND
FLOOR
PLAN



Discover a whole new world of happiness

Modern external facilities within the complex are developed keeping in mind the interests and growth of all its residents. From kids to grown ups, every one can find a suitable indulgence here.

- Temple
- Landscaped Garden
- Children's Play Area with Sand Pit
- Club House With Well Equipped Gym.
- Acupressure pathway
- Amphitheater
- Pavilion
- Secured Entry





*Settle down
to a life time of peace
and harmony.*

HARI TM **SANSKRUTI**

60 M WIDE D P ROAD

12 M WIDE ROAD



HARI SANSKRUTI
A thoughtful attention to detail.



SPECIFICATIONS

LIVING

POP Moulding Work in living Room with 2'X 2' Vitrified Tiles.

KITCHEN

Granite Kitchen Platform with Stainless Steel Sink.

4" Glazed Dado Tiles.

BATHROOMS

Designer Bathrooms with 7' height Glazed Tiles, best quality Hot & Cold Mixture System with Quality Sanitary & Bath Fittings.

DOOR & WINDOWS

All Doors are both side Laminated Flush Doors.

Main Door decorative Type with Quality Fittings.

3Track powder coated Aluminium Sliding Window with Mosquito Net, Marble/Granite Frame and Guard Bars.

LIGHTING & ELECTRICITY

Concealed Multi Strand Wiring with appropriate number of points.

Telephone and TV Cable Points in Living with Inverter Point.

ISI Mark Modular Switches.

PLUMBING

Concealed Plumbing Fitting.

Overhead & Underground water Tank with Plumbing Arrangement for the Building.

PAINTING

Interiors: Pleasant shades in Acrylic Distemper Paint.

Waterproof treatment on Terrace & Toilet.

PARKING

Paving blocks in Open Parking and building margins.

SECURITY

Secured Entry.
Video Door Phone.

Vastu Shastra Based Design.

Quality RCC Construction, combined with high quality Brickwork for Walls.

External 6" and Internal 4" thick Brickwork.

Plaster Smooth finish for a smooth life style. Inner Side of building will be gypsum plaster and outer side double coated cement sponge plaster with texture & M.S chicken mesh to avoid cracks.

Lift with Battery Backup.

2 BHK FLAT

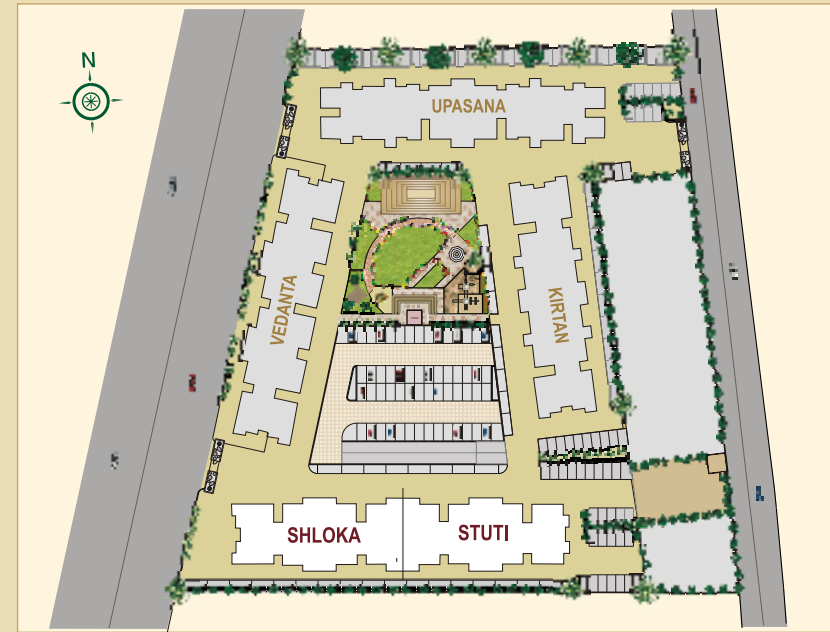


1 BHK FLAT

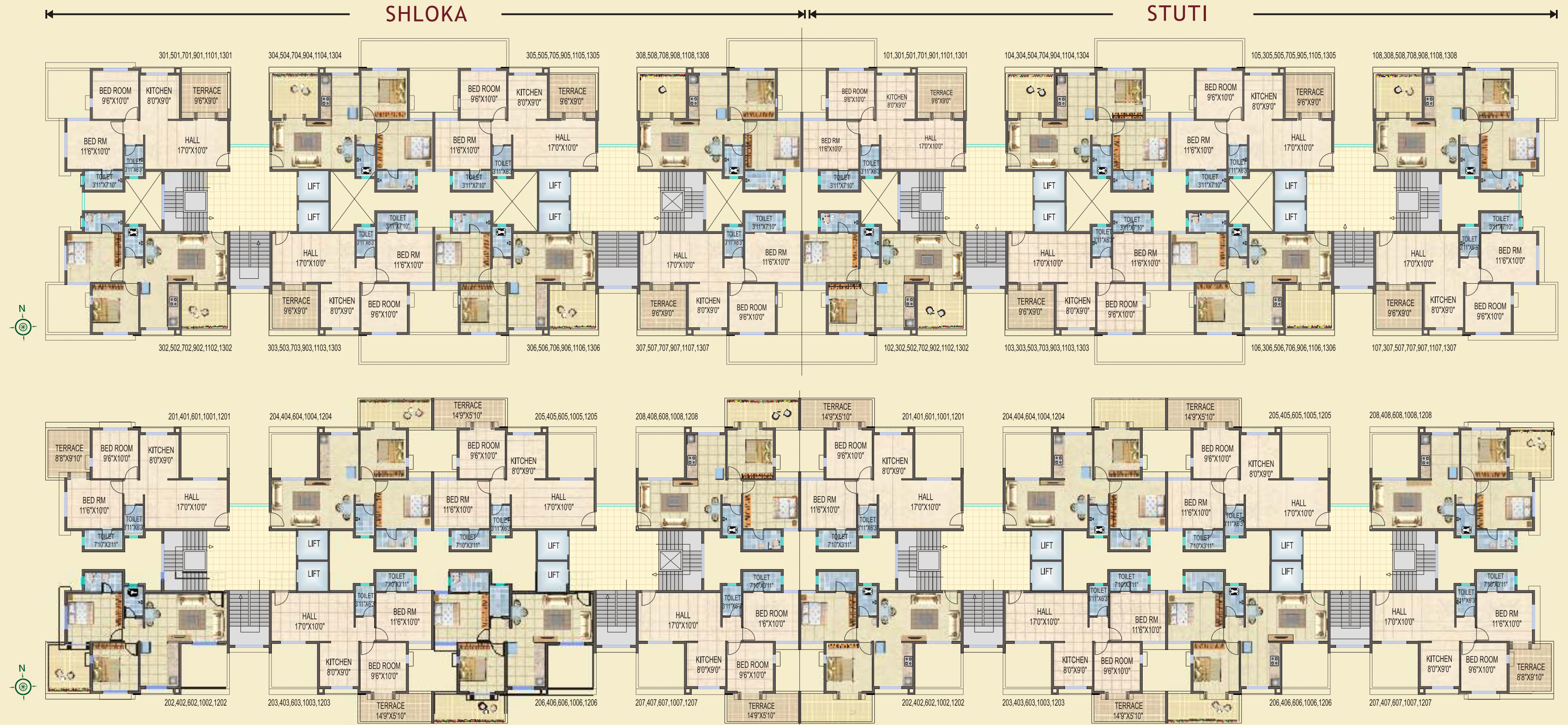


1 RM KITCHEN



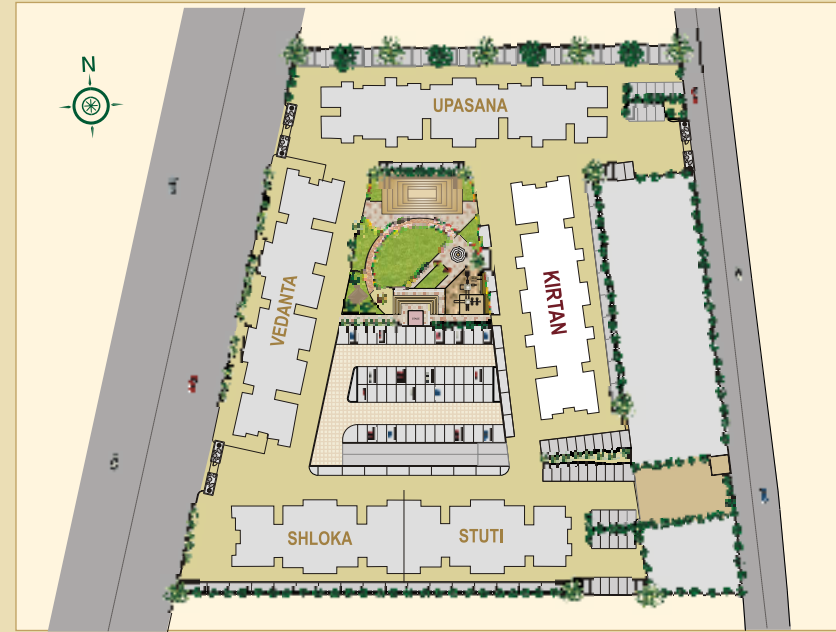


SHLOKA & STUTI



- Typical Floor Plan
- 13 th
 - 11 th
 - 9 th
 - 7 th
 - 5 th
 - 3 rd
 - 1 st (Stuti)

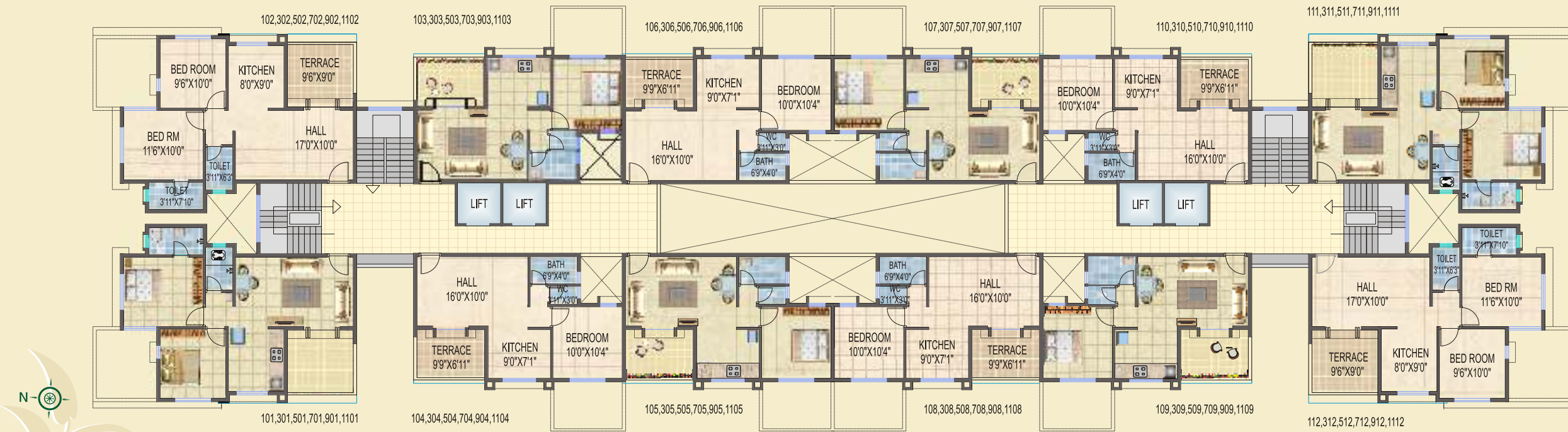
- Typical Floor Plan
- 12 th
 - 10 th
 - 6 th
 - 4 th
 - 2 nd



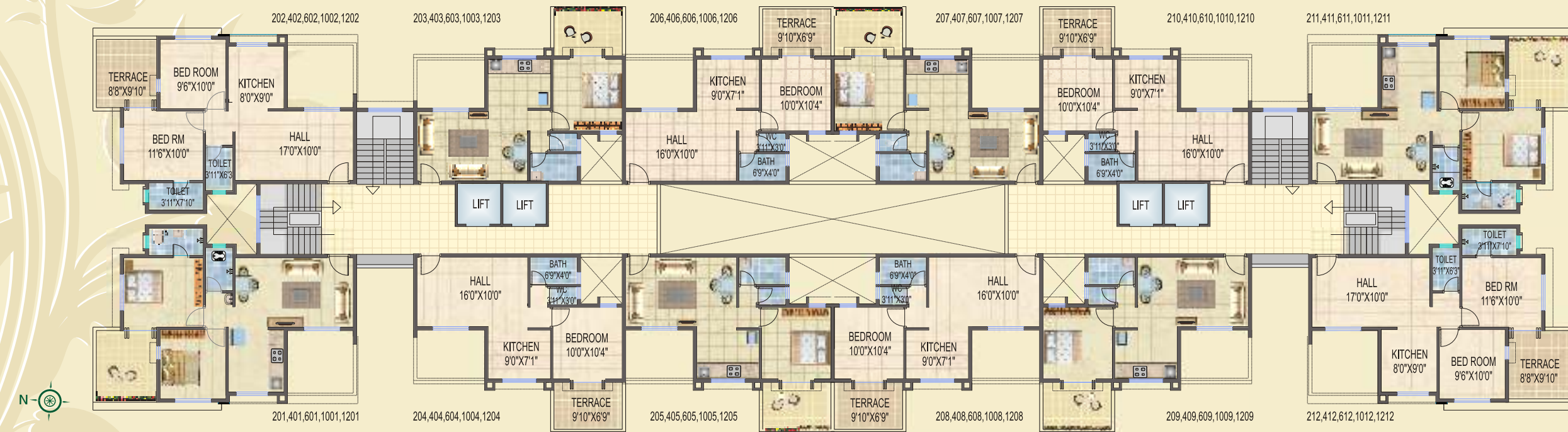
KIRTAN



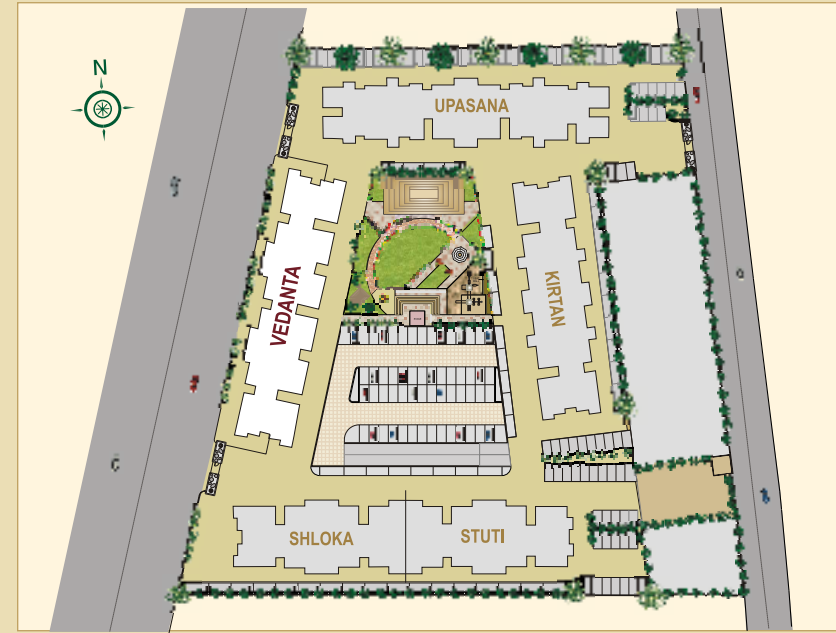
KIRTAN



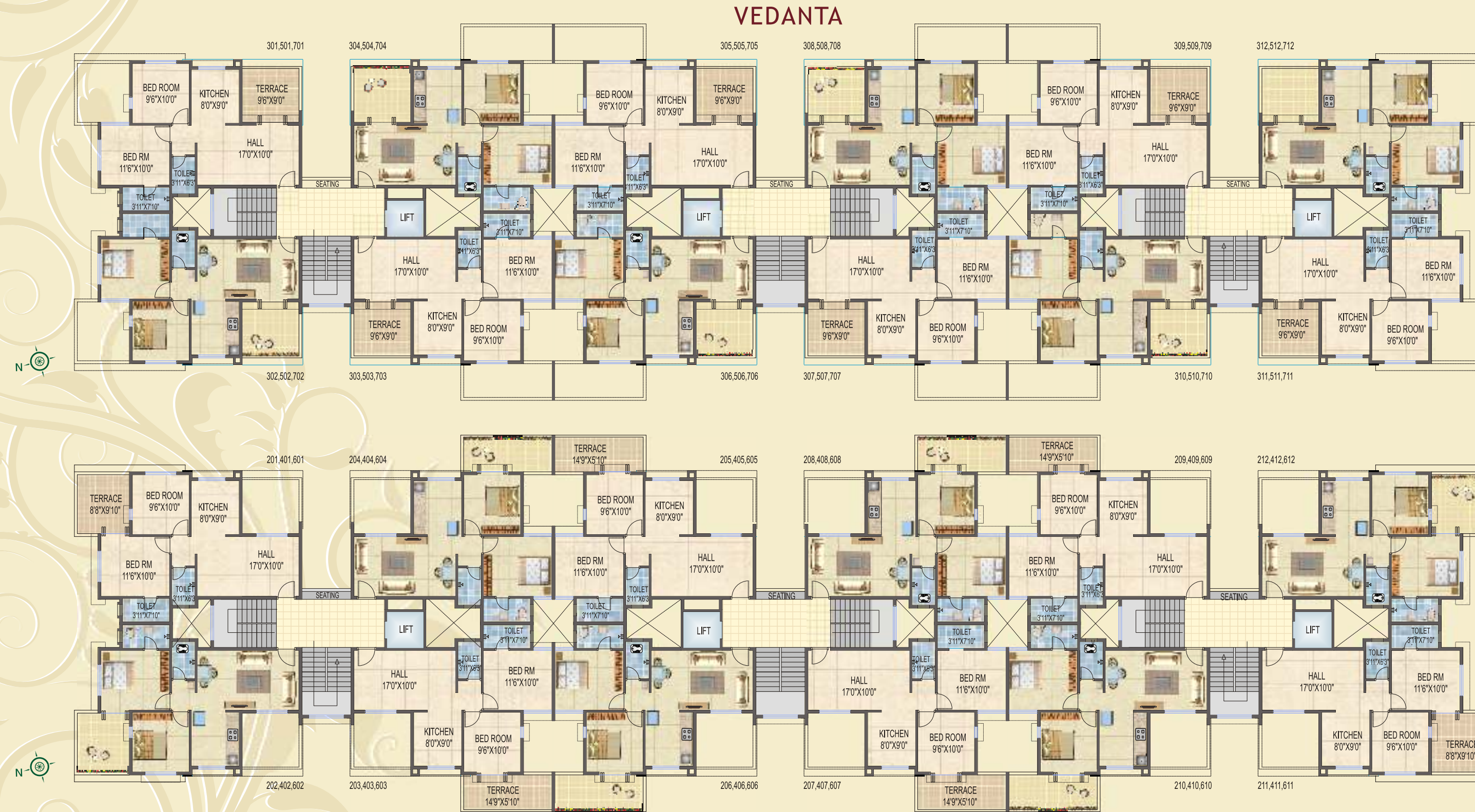
- Typical Floor Plan
- 11 th
 - 9 th
 - 7 th
 - 5 th
 - 3 rd
 - 1 st



- Typical Floor Plan
- 12 th
 - 10 th
 - 6 th
 - 4 th
 - 2 nd

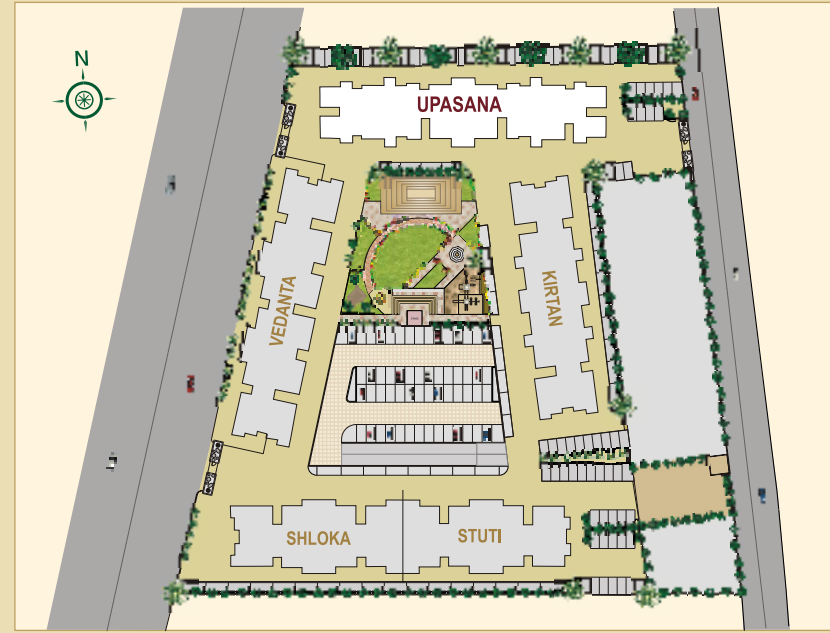


VEDANTA



Typical Floor Plan
 3rd
 5th
 7th

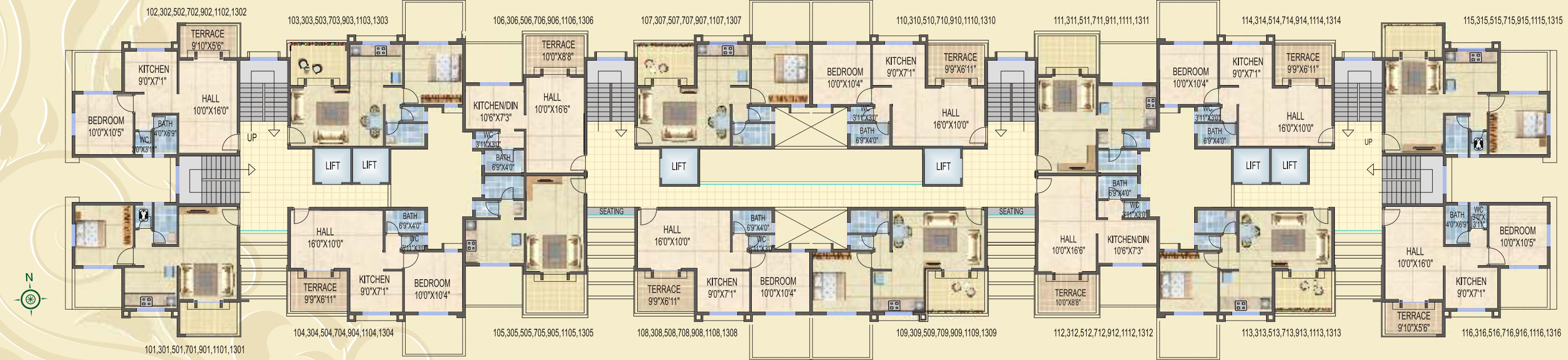
Typical Floor Plan
 2nd
 4th
 6th



UPASANA

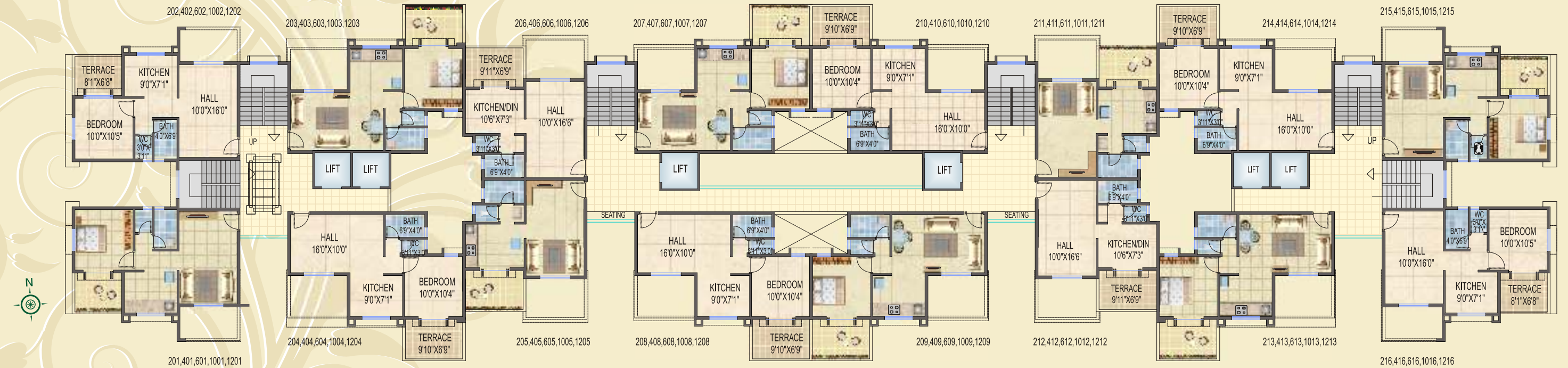


UPASANA



Typical Floor Plan

- 13 th
- 11 th
- 9 th
- 7 th
- 5 th
- 3 rd
- 1 st



Typical Floor Plan

- 12 th
- 10 th
- 6 th
- 4 th
- 2 nd

HARI VISHWA Behind Express Inn Hotel, Mumbai Nashik Highway, Nashik.



HARI OM RESIDENCY Near Guru Gobind Singh Polytechnic College, Indira Nagar, Nashik.



HARI SHRUSHTI Behind FAME Multiplex, Ashoka marg, Nashik



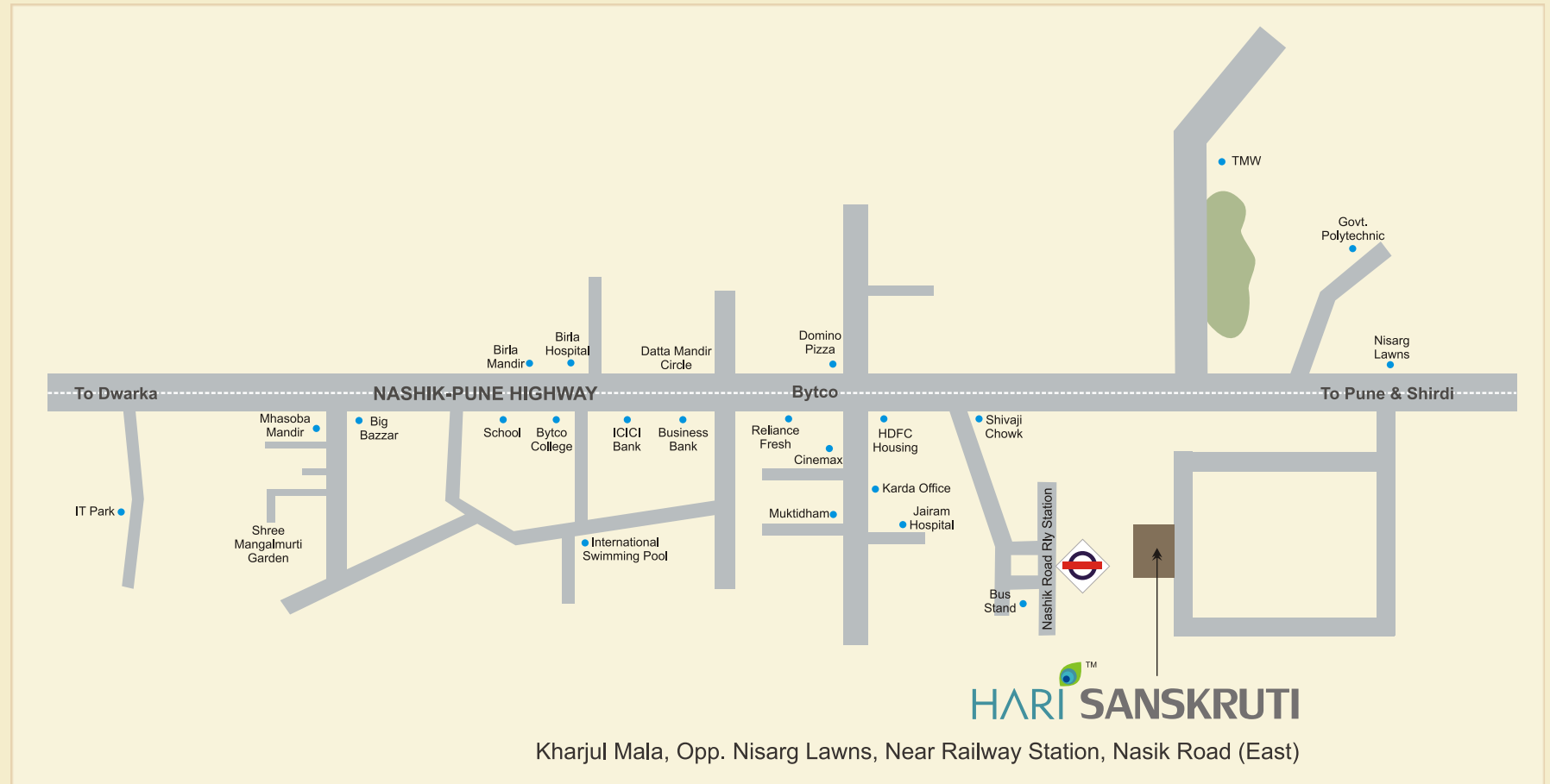
KARDA Group prides itself on having re-defined the meaning of the word 'home' in the rapidly developing city of Nashik.

Under the accomplished leadership of director Naresh Karda, the group constantly works and strives towards setting new standards. They have provided efficient and aesthetically appealing spaces and homes at affordable prices for almost 17 years.

The term 'Hari', has become synonymous with the group and its pioneering constructions have contributed immensely in redefining Nashik's skyline over the years.

HARI SPARSH Near Barnes School, Deolali Camp





Corp. Office: Sai kripa Complex, Tilak Road,
Opp Muktidham, Nasik Road, Nasik - 422 101.
Tel: 0253-2465436

City Office: 2nd Floor, Gulmohar Status,
Dr. Munje Road, Samarth Nagar, Nasik
Tel: 0253-2351090

For Booking Contact
Cell: 9545559112 / 9545559113 /
9545559114 / 9545559118
Sms HOME to 5667777
Email: enquirekarda@gmail.com
Website: www.kardaconstruction.com

Architect
Arch Prashant Themaskar

R.C.C Designer
Sanjeev Patel

Legal Advisor
Nandkishore Bhutada & Associates



Note : The Developers reserve the right to change plans, specifications and features without prior notice or obligation, at their sole discretion and subject to approval of Government authorities.
Specifications, writeup, internal layouts, plans and pictures shown in this booklet are only indicative. All renderings, floor plans, pictures and maps are the artist's conceptions and not actual depictions of the building, its walls, roadways or landscaping.