

Rest by the sea  
without rusting...

India : +91 9995055555  
Kuwait : +965 55863923  
Dubai : +971 502016091  
Saudi : +966 567569363  
Qatar : +974 5267231

[www.alhindbuilders.com](http://www.alhindbuilders.com)





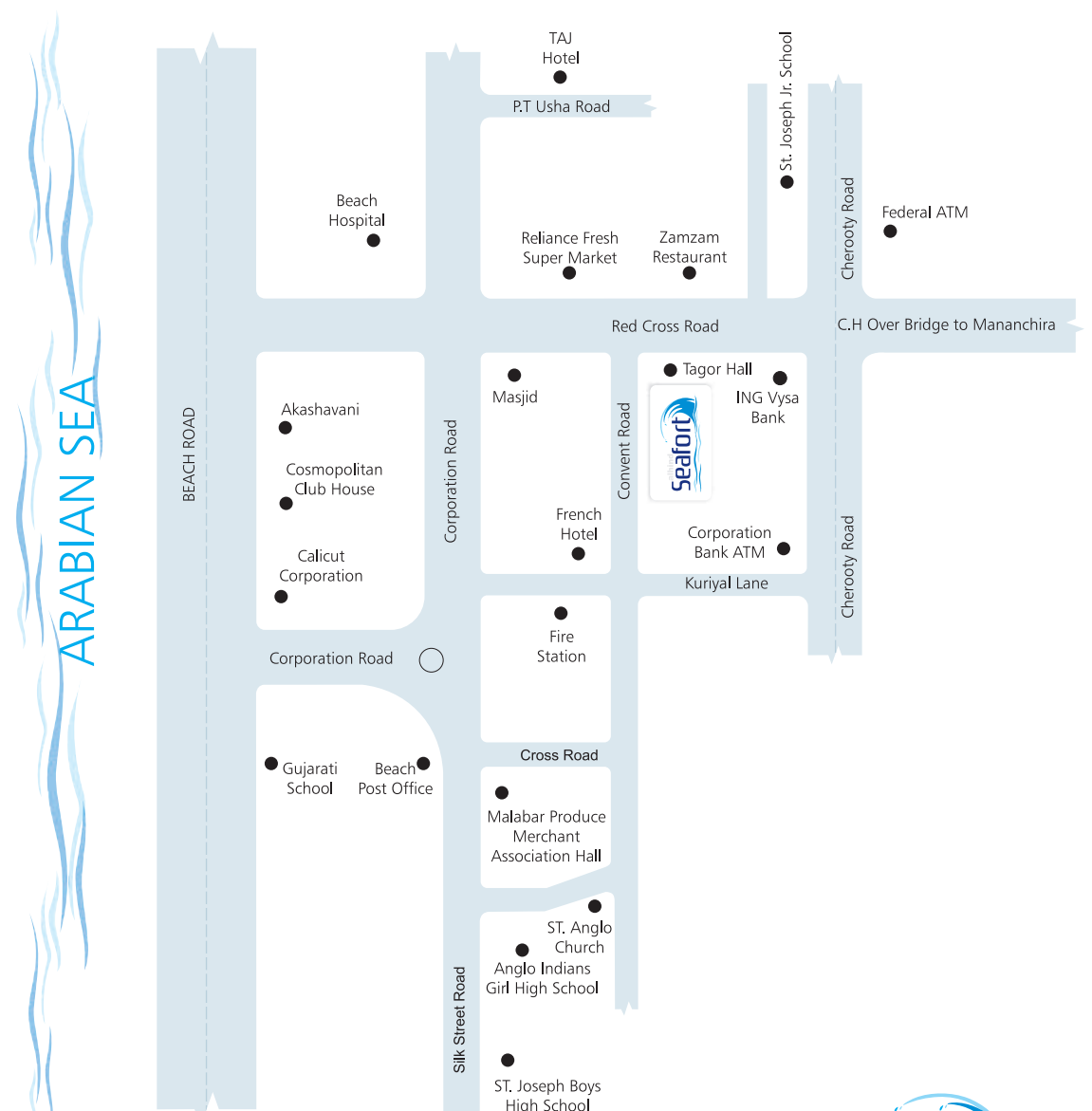
## TIPS FOR BUYING AN APARTMENT...



### a) location

make your address big, known & famous

At Alhind Seafort you will be placed at an address enviable. The best home place in Calicut, Munalingal and Convent Road is the most expensive and posh area. Tagore Hall, Chamber Hall, all big brand showrooms, best eating spots, hospitals, worship places and so much to be highlighted.



## amenities

- Swimming Pool | Centralised gas supply
- 24 Hour Security | Landscaped Garden | Two lifts
- Children's Play Area | Open air party area | Inter-connectivity
- Sewage Treatment Plant | Rain water harvesting | Health Club
- Generator backup for lifts, common area & selected points in apartments



## b) quality

should never be compromised

Quality derives from best products when rightly arranged and ergonomically executed. Alhind Builders's existing projects are a replica for branded products to its premium.

**Structure:** RCC framed structure. Designed as earthquake resistant building in zone 3. Laterite masonry plastered with cement mortar for external walls and wire cut brick masonry for internal walls

**General Flooring:** Vitrified tile flooring for apartments, main staircase, lobby and passages.

**Kitchen:** Counter with granite top. Stainless steel sink with drain board

**Toilets:** Concealed plumbing with PVC pipes, provision for geyser, wash basin and European closets, Chromium plated taps and shower fittings, premium quality ceramic tiles for floors and walls

**Doors and Windows:** Teak wood front door, moulded panel doors for interiors. Anodized aluminium windows with MS grills and glass

**Painting:** Internal walls putty finished with emulsion except toilets. External walls painted with weather shield or equivalent

**Cable TV:** TV and internet provisions in living room and master bed room

**Electricity:** Three phase power supply with concealed wiring controlled by ELCB and MCB & elegant modular switches

**Telephone:** Provision for connection in living and master bed rooms

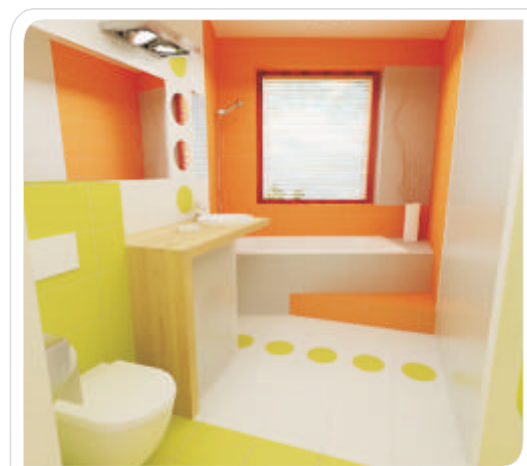
**Generator:** For lifts, common lights, water pumps etc. and selected points in each apartments such as one light point each in living room, master bed room, kitchen, one fan point in master bed room and TV point in living room

**Water:** Water supply through UG sump and OH tank

**Fire Fighting:** Efficient fire fighting systems provided with water tanks, pumps and extinguishers

**Car Park :** Covered car park\*

\*At extra cost



## c) pricing

the only concern of all buyers - avail the best quote of callcut

Cost, location and quality are directly proportionate. But, we proved it wrong. Seafort offers you an affordability in pricing without compromising in quality and with the best location.

## d) design

the best homes are best designed homes

Designing is the key strategy in Seafort with 2-3 apartments in a floor and ample ground space for amenities and parking. Apartments offer ample Sea view from its upper floors. Duplex living in Seafort creates very homely atmosphere within an apartment.



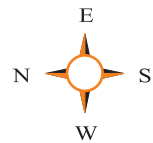
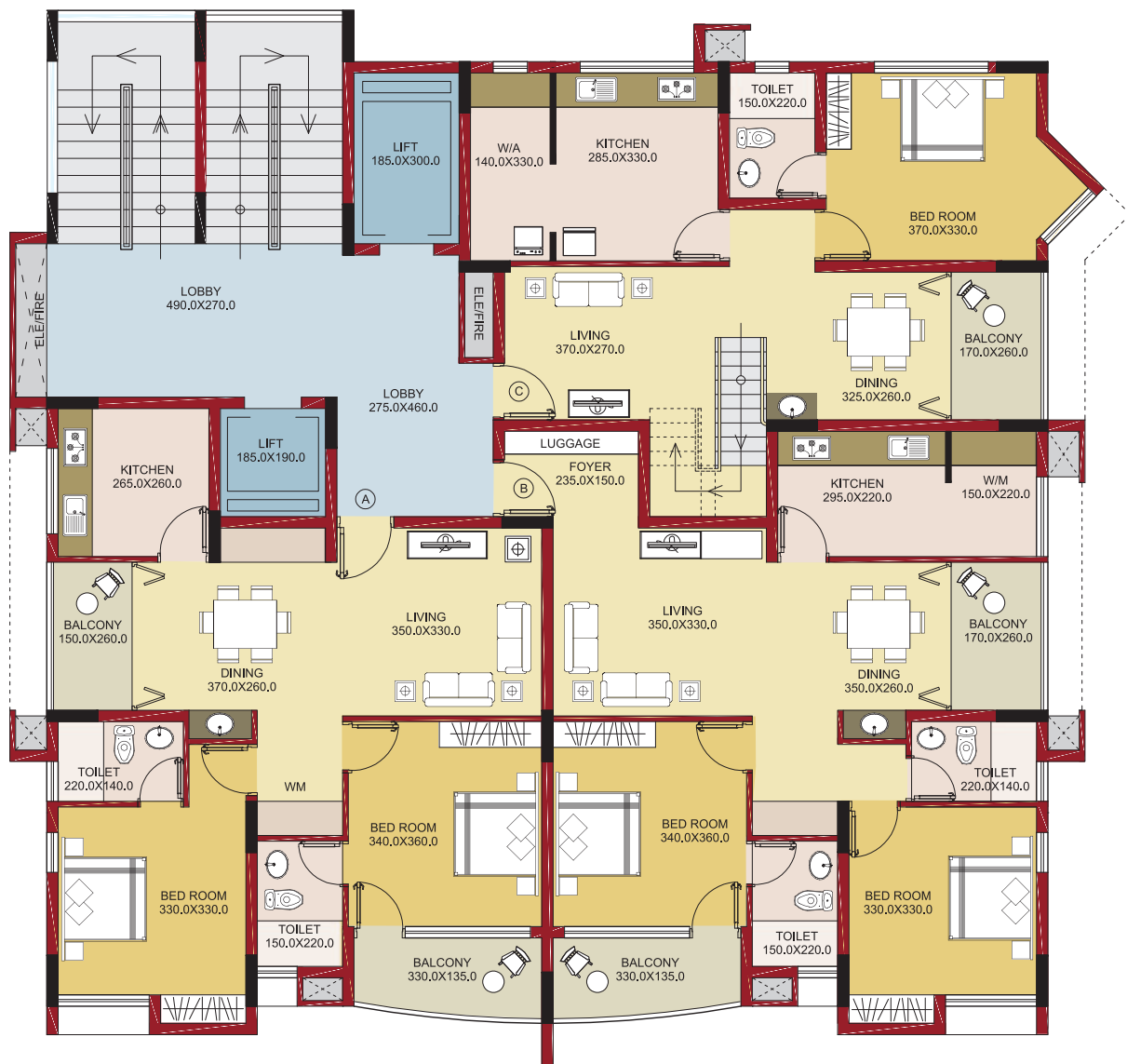
## e) builders

rich background, high technical backup and known parental hierarchy

Alhind builders is humble leap of Alhind Tours & Travels Pvt. Ltd. in the construction segment. Alhind Tours & Travels Pvt. Ltd. is the second biggest ticket consolidator in the world with a base in India.

It has presence all over India with 35 branches and also in UAE, Saudi, Kuwait, Qatar and Bahrain which makes it a 'stand-alone' in the travel industry. Alhind builders is headed by legends in construction industry with in-house design studio, construction infrastructure and own material procurement hubs.

# typical floor plan

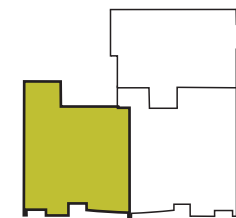
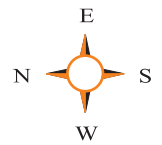
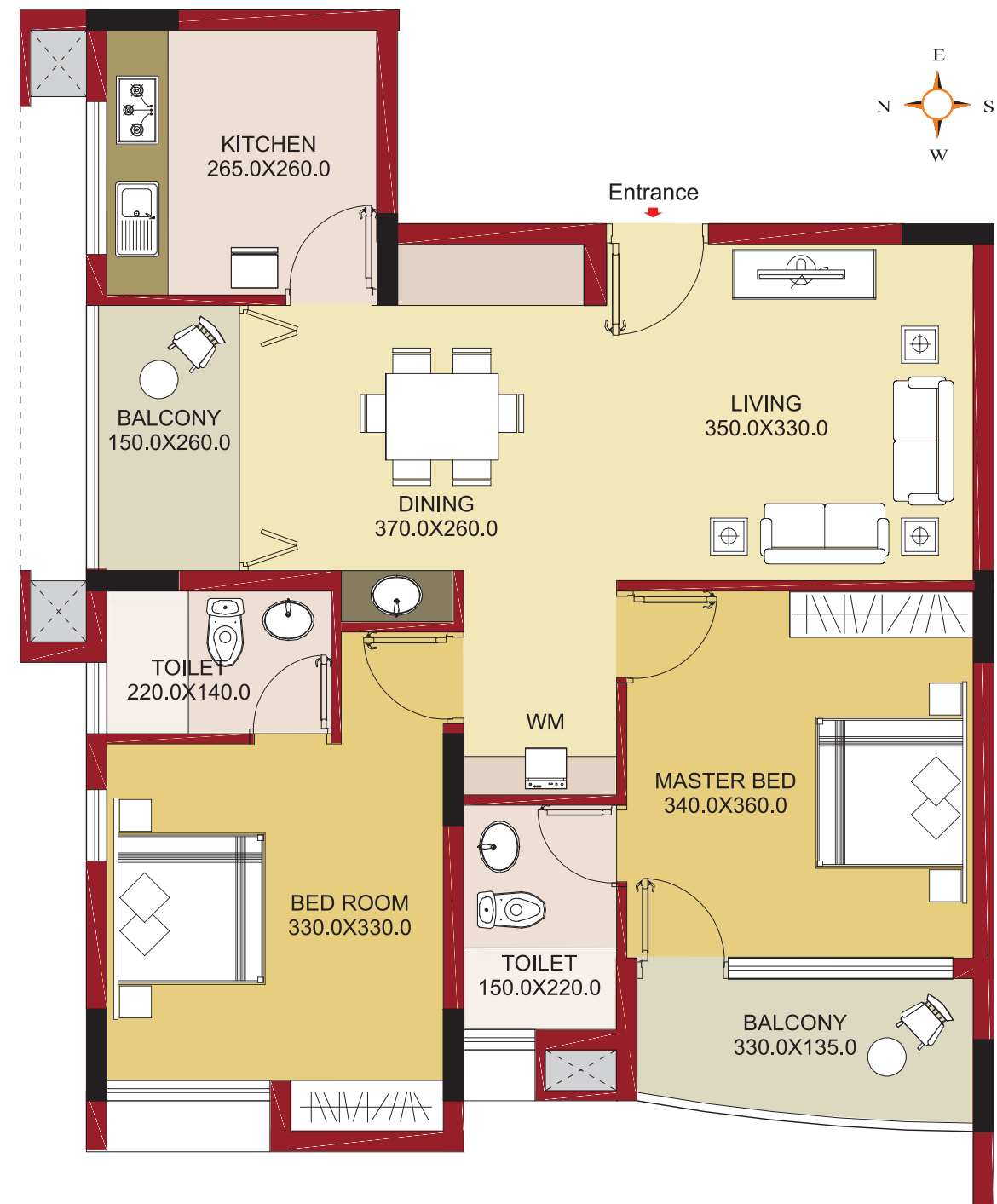


ARABIAN SEA

**Note:** All measurement and specifications given elsewhere in this brochure are subject to minor variations without specific or general notices. All such variations/alterations shall be purely at the discretion of the builders. The information contained herein does not form part of the contract and is subject to change. This brochure does not constitute a legal offer. Areas and floors may increase subject to the sanction from authorities.

◆ All Dimensions are in Centimeters    ◆ Furnitures & Fixtures are indicative only

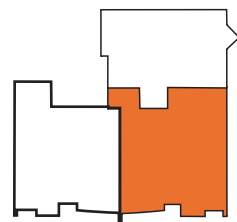
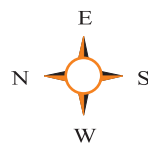
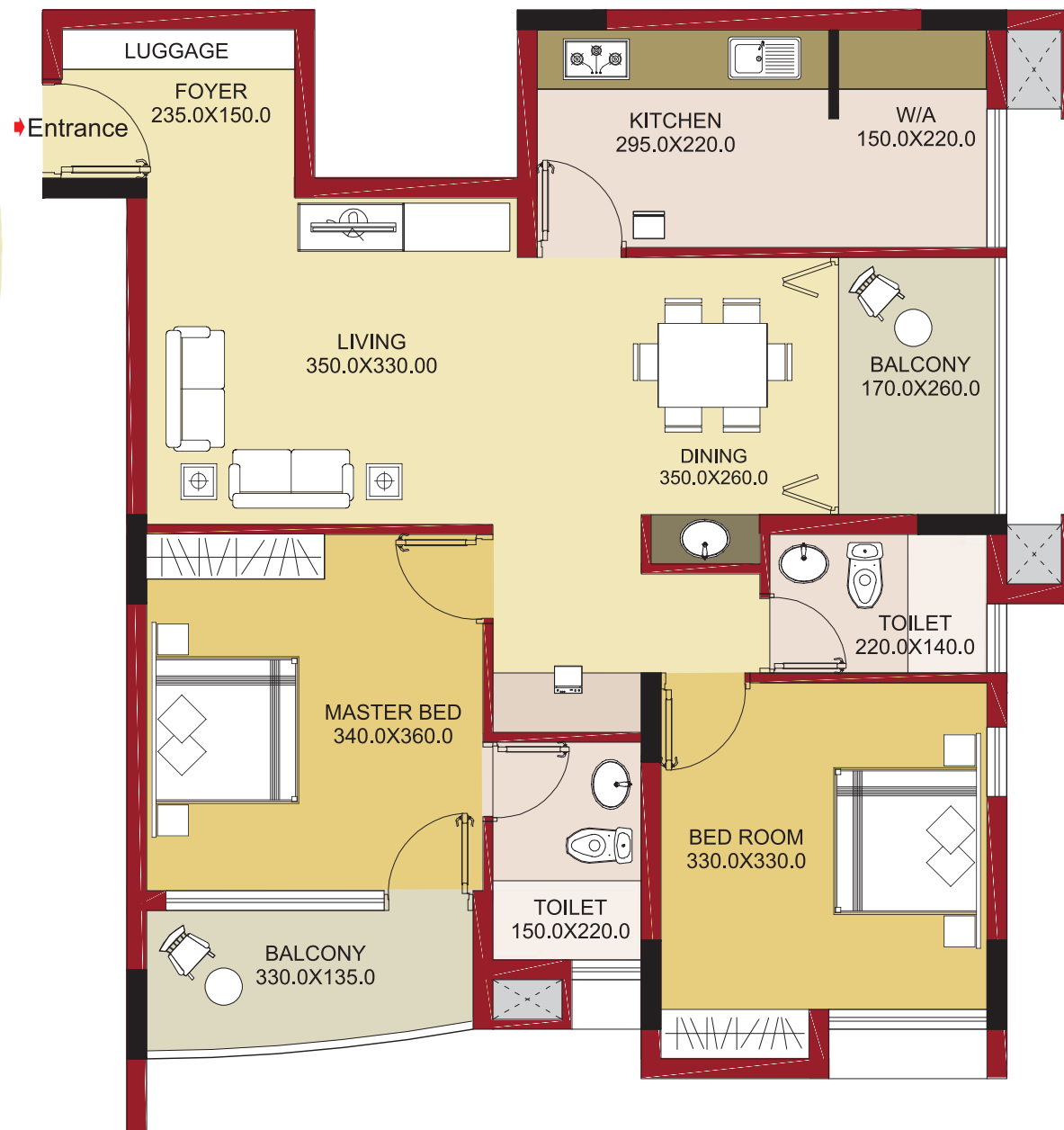
# floor plan Type-A



Type-A  
2 Bed Room Apartment  
1A, 2A, 3A, 4A, 5A, 6A,7A, 8A, 9A,  
10A, 11A, 12A, 13A, 14A, 15A, 16A - 16 Nos.  
Area: 1100 Sq.Ft

◆ All Dimensions are in Centimeters    ◆ Furnitures & Fixtures are indicative only

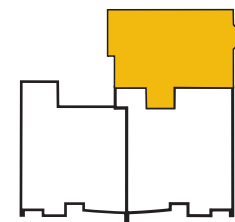
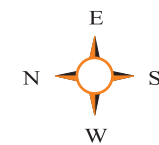
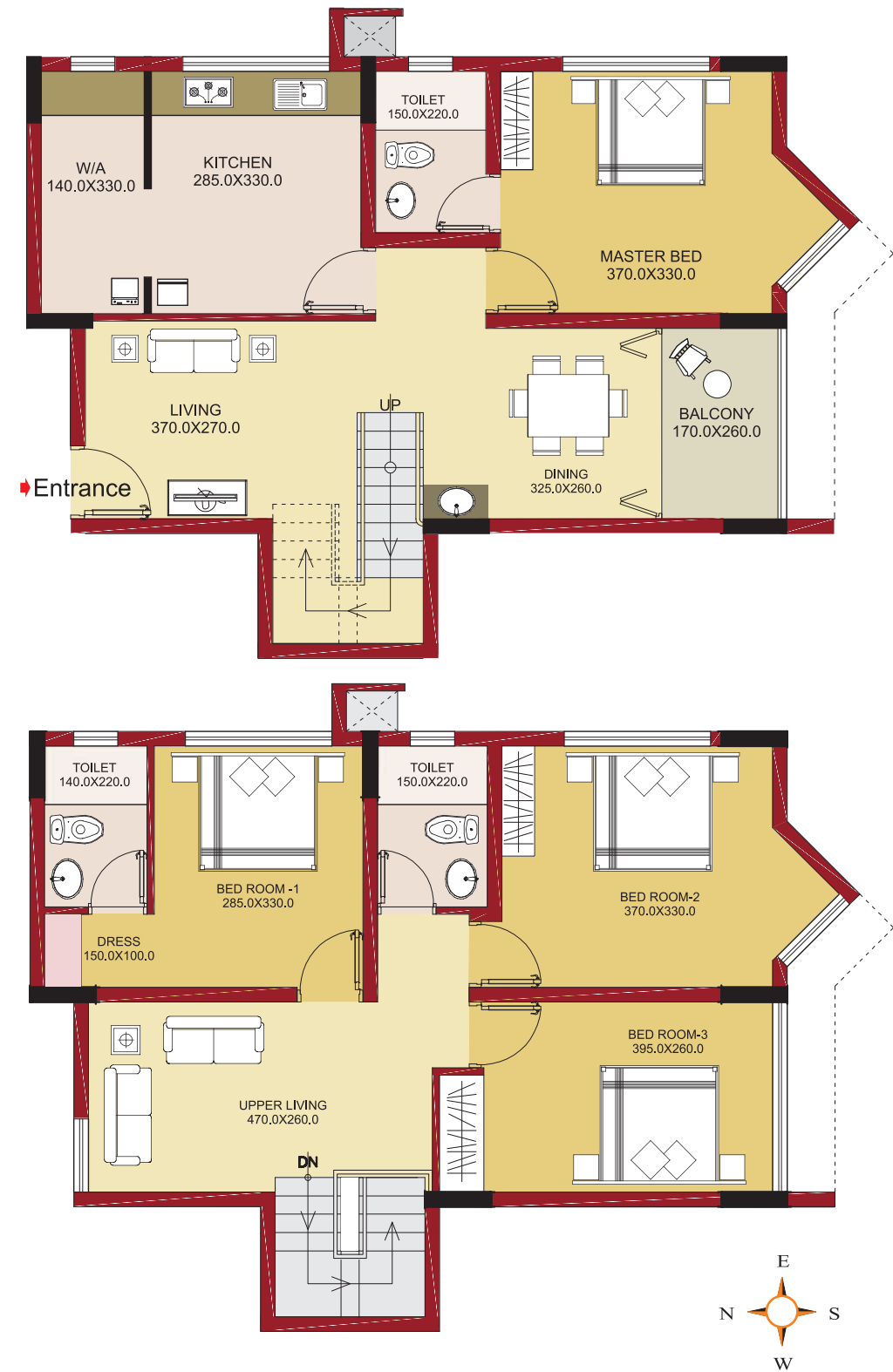
# floor plan Type-B



Type-B  
2 Bed Room Apartment  
1B, 2B, 3B, 4B, 5B, 6B, 7B, 8B, 9B,  
10B, 11B, 12B, 13B, 14B, 15B, 16B - 16 Nos.  
Area: 1173 Sq.Ft

◆ All Dimensions are in Centimeters    ◆ Furnitures & Fixtures are indicative only

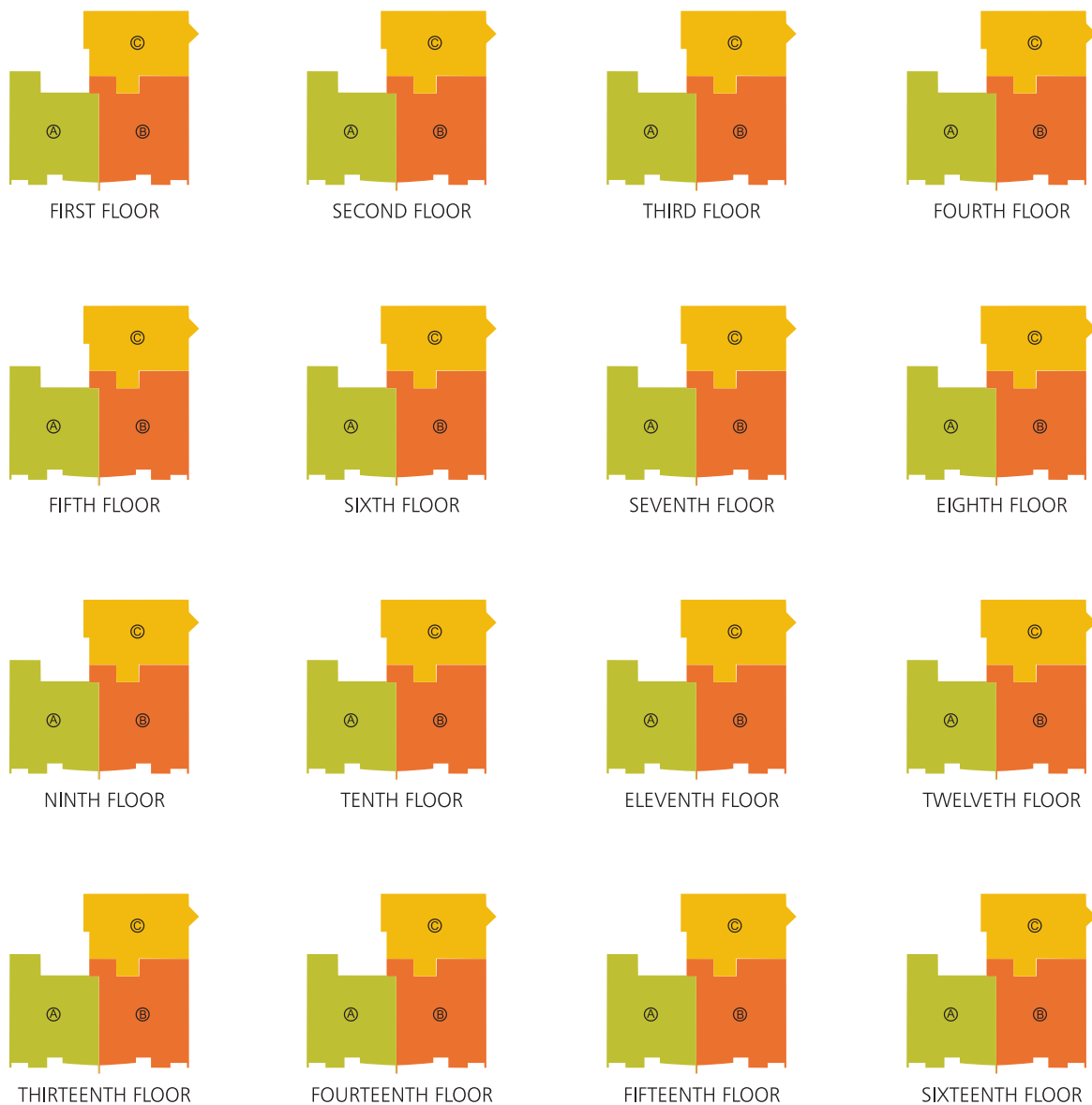
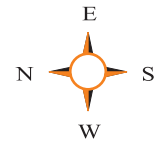
# floor plan Type-C



Type-C  
4 Bed Room Apartment  
1C, 2C, 3C, 4C, 5C, 6C, 7C, 8C, 9C,  
10C, 11C, 12C, 13C, 14C, 15C, 16C  
Area: 1838 Sq.Ft

◆ All Dimensions are in Centimeters    ◆ Furnitures & Fixtures are indicative only

# allotment plan



Luxury Apartments  
at Eranhipalam, Calicut



Luxury Apartments  
& Commercial Spaces  
at Medical College, Calicut



Premium Apartments  
at Nadakkavu, Calicut



Luxury Villas  
at Kalpetta, Wayanad

## distance from important landmarks

- |                      |           |                         |          |
|----------------------|-----------|-------------------------|----------|
| ● Tagore Hall        | - 0 km    | ● Super Markets         | - 0 km   |
| ● Schools            | - 200 mts | ● Mananchira            | - 1 km   |
| ● Beach Post Office  | - 300 mts | ● New Private Bus Stand | - 1.6 km |
| ● Arabian Sea        | - 100 mts | ● KSRTC Bus Stand       | - 1.2 km |
| ● Corporation Office | - 150 mts | ● Railway Station       | - 2 km   |
| ● Hospitals          | - 300 mts | ● Airport               | - 22 km  |
| ● ATM                | - 100 mts |                         |          |



INDIA | UAE | SAUDI | KUWAIT | QATAR | BAHRAIN

### Our Services:

Airline Tickets | Visa Service | Passport Service | Certificate Attestation | Tour Packages | Tourist Vehicles | Railway Reservation | Luxury Bus Booking | Hajj & Umrah Packages | Foreign Exchange.