

NEWRY Sudeepta

STRUCTURE

- ▶ RCC framed structure with RC foundations conforming to BIS.
- ▶ Anti-Termite Treatment as per BIS
- ▶ 9" thick brick wall for the outer wall and 4 -1/2" thick brick wall for the internal partition wall.

WALL FINISHES

- ▶ Cement plaster and Altech putty finish with Emulsion Paint for all Internal walls and Exterior Emulsion Paint for External Walls.
- ▶ The toilet walls finished with Joint Free Tiles upto full height.
- ▶ Wash area will be finished with Ceramic Tiles upto 2'6" Height
- ▶ 2' above the kitchen platform will be finished with double glazed ceramic tiles.

FLOOR FINISHES

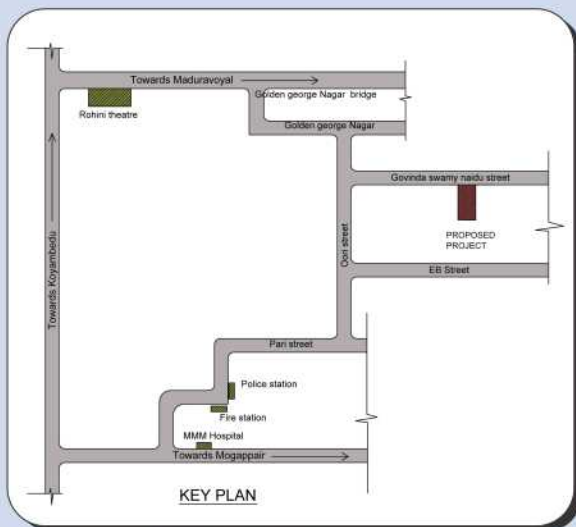
- ▶ Living and Dining will be finished with 3' x 3' Vitrified tiles and Bedrooms with 2' x 2' Vitrified tiles with matching skirting.
- ▶ Kitchen, Balconies will be finished with anti-skid finish tiles with matching skirting.
- ▶ Bathroom Flooring & Wash/ Service will be finished with Anti - Skid Ceramic tiles.

DOORS & WINDOW

- ▶ Teak wood frame with teak paneled door shutter polished with melamine on both sides.
- ▶ First class country wood frame with both side teak finish flush shutter for all Bedroom doors
- ▶ First class country wood frame with flush door with one side polish and one side paint finish for all toilet doors
- ▶ Godrej or Equivalent locks will be provided.
- ▶ French doors- Teak wood frame with Varnish finishes inside and Paint finish outside, shutters fitted with 4mm thick Glass and MS Grills with Enamel Paint.
- ▶ Windows – UPVC windows with MS Grills.

KITCHEN

- ▶ 2' Granite Platform with Stainless Steel Single Bowl and Single drainboard



TOILETS

- ▶ Pastel shade Wall Mount - European Water Closets of Parryware or equivalent will be provided.
- ▶ All CP fittings in bathrooms are of Jaguar/ Plumber / Parryware continental range or equivalent.
- ▶ Health Faucets, Wall mixer with an overhead shower will be provided.

ELECTRICAL

- ▶ Concealed Insulated Copper Multi-strand wires in all Apartments.
- ▶ Switches & Sockets of MK or Equivalent and Distribution Board with MCB's TV and Telephone Points will be provided in Living and all Bedrooms.
- ▶ Electrical Provision for Microwave, Fridge, Mixer, Grinder, Aqua guard and Chimney.
- ▶ All Toilets will have electrical provision for connecting a Geyser.

INTERNET

- ▶ Provision given for Internet connection in Living and Master Bedroom

LIFT

- ▶ The building will be served by one Six passenger lift of "JOHNSON" make or equivalent.

POWER SUPPLY & GENERATOR

- ▶ 3 Phase Power Supply with Generator Back-Up for common lighting, lifts, pumps and for all lighting and fan loads of the apartment.

COMMON TOILET

- ▶ Common Toilet for drivers and domestic help.

LANDSCAPING

- ▶ Landscaping as per architect's Design.

SUMP

- ▶ One underground RCC sump of adequate capacity

BOREWELL

- ▶ One bore well of required depth would be provided.

RAIN WATER HARVESTING

- ▶ As per the requirements of CMWSSB

EXTRA WORK

- ▶ If any additional work is required to be carried out or extra fittings are to be provided, the same will be executed at extra cost after the Allottee approves the estimate for extras and pays the extra cost in Advance.

Site Address:

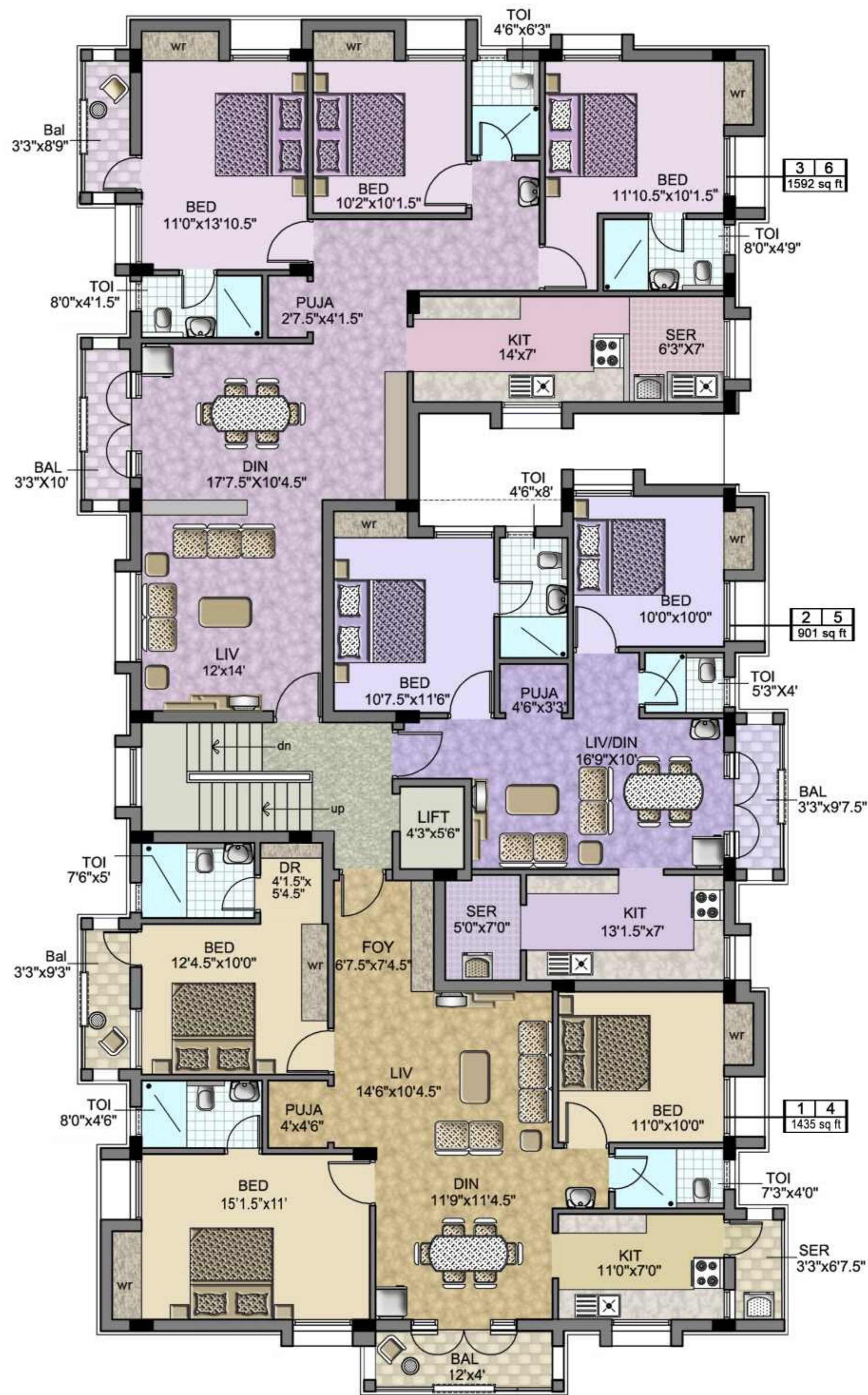
Plot No. 3 & 4, Govindasamy Naidu Street,
Golden George Nagar, Moggappair, Chennai.

NEWRY Sudeepta

Quality homes that delivers the best of everything. Located in Mogappair with proximity to reputed Schools, Hospitals and to all your needs and wants. 12 Exclusive Apartments designed with greatest care and utility value. Newry Sudeepta offers the best of living in its class, and provides you the chance to experience serenity in your own way.

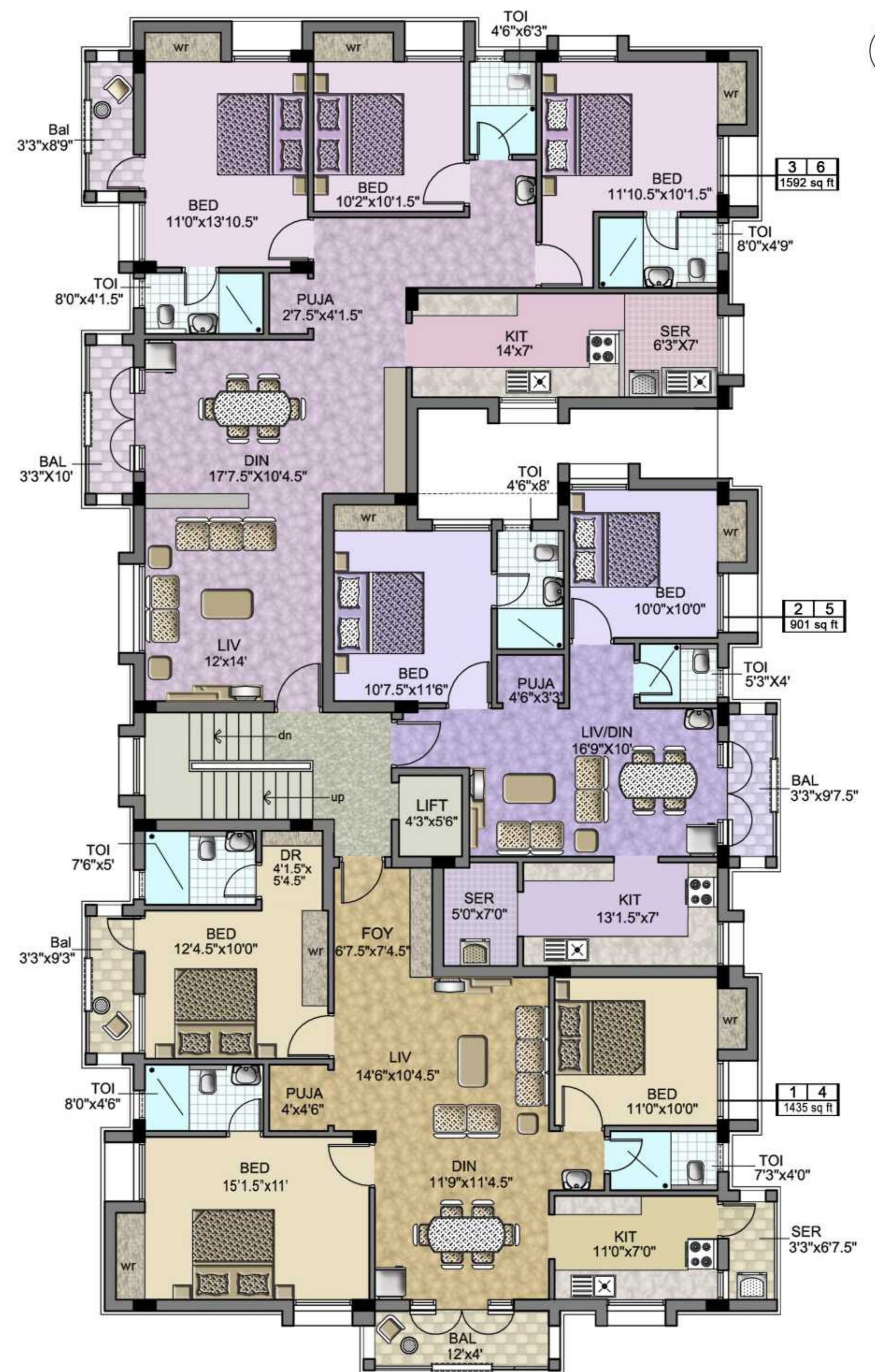


"Live Life the quality way"
@ Newry Sudeepta



BLOCK B

TYPICAL FLOOR PLAN - (1st, 2nd FLOOR PLAN)



BLOCK A

TYPICAL FLOOR PLAN - (1st, 2nd FLOOR PLAN)