

## Five Minutes Drive

To Bolarum MMTS Station

Conveniently located at a distance of just 5 minutes from the Bolarum MMTS, "Ark Homes" offers the ease of Public Transit. You can easily access malls, offices, schools and other similar entertainment spaces in a jiffy. It is just 2 kms from Karimnagar Highway and 3 kms from the Nizamabad Highway. All of these keep "Ark Homes" well-connected.



## The happiest gated community!



### Strong sense of community!

Ark Homes, Bolarum is a gated community where neighbours have a strong sense of belonging. It's a place where your neighbours are your close friends! A secure haven where you don't have to worry about the safety of your loved ones. A place where neighbours are always there to help!

### Happening gated community

"Ark Homes" offers a gated community that redefines urban living with a tranquil, secure haven amidst the city where your children can run and play. It's just a five minute drive from Bolarum MMTS for easy public transit. Our gated community is one of the biggest in the region with rich amenities that await you.

### 415 happy families living

415 families are already living in "Ark Homes" away from the hustle and bustle of the city - and still connected. They are enjoying the amenities of a gated community which includes amazing facilities detailed in this brochure.

### 2 Tower options

You have two towers to choose from - Orchid and Tulip which are underway for delivery to customers.



## Elegance Personified

### Comfort of Green Living

We welcome you to live in one of the most friendliest apartments in Hyderabad, surrounded by beautiful landscaping, comfortable homes and thoughtful amenities.



SHOT AT ACTUAL SITE



Scan after  
10<sup>th</sup> March 2020



## Gated Convenience

### Amazing Amenities within the Community

Residents will savor the most subtle joys of life. "Ark Homes" is a gated community with all the essential amenities intended to enrich the lifestyle of the residents.

#### Amenities

- Club house
- Children's play areas
- Library
- Manjeera drinking water
- Swimming pool
- Banquet hall
- Supermarket
- Power backup for common areas
- Spacious parking
- Open green spaces
- Security room

SHOT AT ACTUAL SITE



Above & Beyond

Real Estate | Infrastructure | Agro Farms | CSR

Site Address  
**Ark Homes from Ark Builders**  
Near Bolarum Railway Station, Secunderabad - 500 010  
Telangana, India.

RERA No.: P02200000448

Sales & Marketing by  
**Ark Tandem**  
Property Consultants  
Info@arktandem.com  
www.arktandem.com

**Ark Group Corporate Office**  
4-51/SLNT/L 603, Level 6, SLN Terminus, Beside Botanical Garden,  
Gachibowli, Hyderabad - 500 032, Telangana, India.

www.arkgroup.in

Call: 8470 089 089

MEMBER  
CREDAI



Strategically located in Bolarum  
with amazing social infrastructure!

## Too good to be True!

### The Clubhouse

Our club house offers recreational spaces, which are highly engaging and entertaining for all members of the family. Facilities at the club house includes a swimming pool, modern gym, children play area and a series of the other fun and interactive activities. You can also stroll across the finely manicured lawns and pathways.



Scan after  
20<sup>th</sup> March 2020





**Two More Towers**  
Offer You Delightful Living  
"Ark Homes" is pretty well ventilated, there's ample free space available around buildings. Furthermore, all the building blocks, swimming pool, green pastures and the club house are smartly planned to facilitate un congested living.

Layout plan



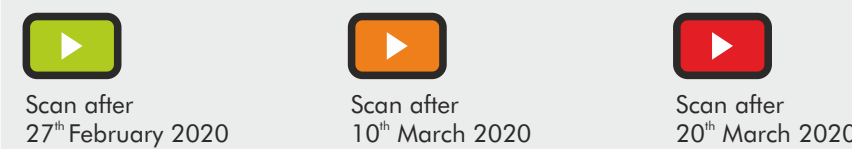
## Enabling Houses To Be Happy Homes

"Ark Homes" is about creating an infrastructure that caters to multi-generational family needs. Our well-spaced homes are thoughtfully designed keeping in mind needs of the family like the kitchen, living areas, etc. Your dream home is waiting for you.



This Brochure has Augmented Reality videos & presentations.

Scan the pages which has one of the following Augmentation Buttons



Scan the full page and not just the video button.

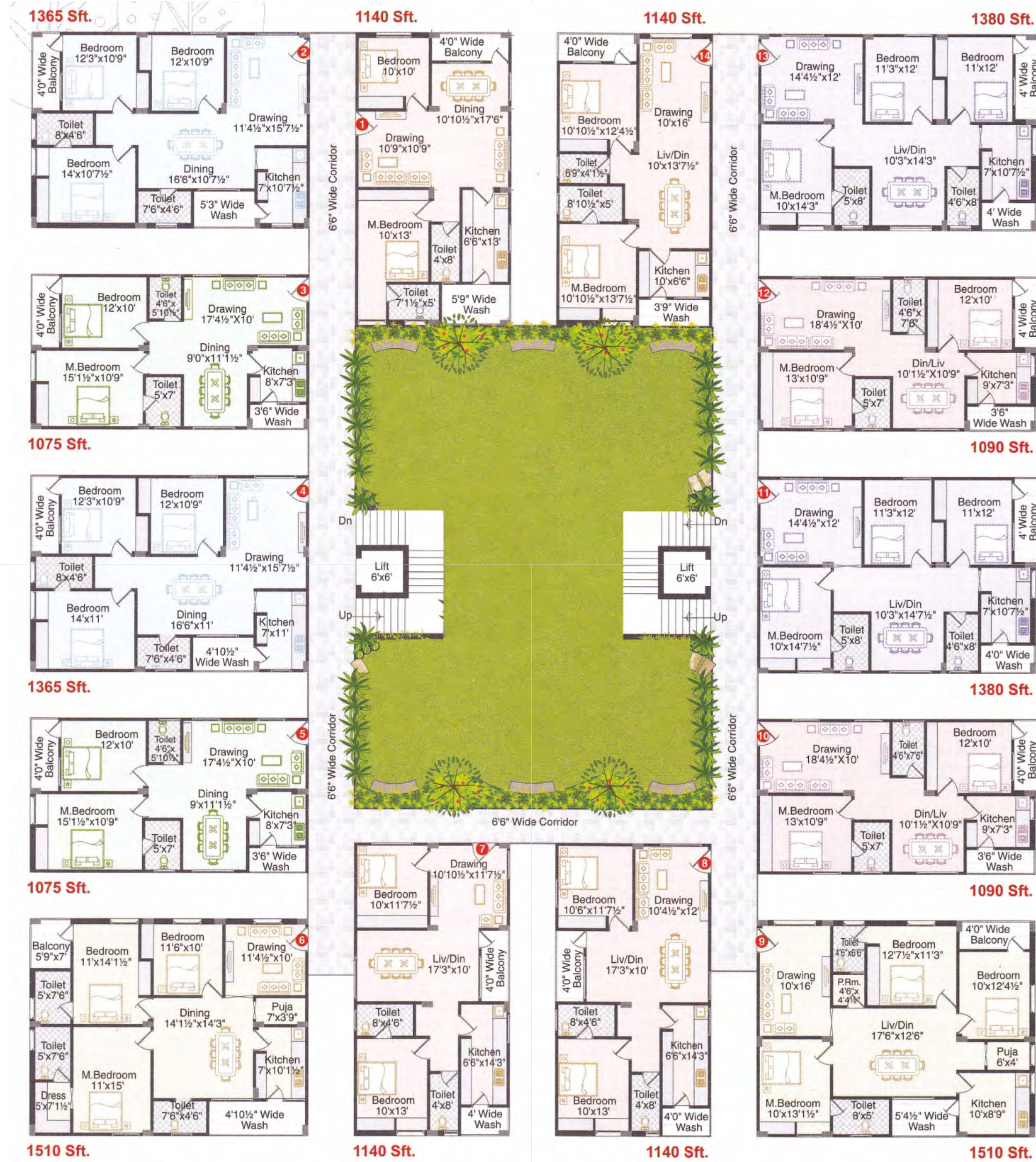
How to witness augmented reality videos?  
Wherever you see this symbol, all you need to do is scan the full page using the Wowsome life App and you will see videos and presentations jumping out of the pages.



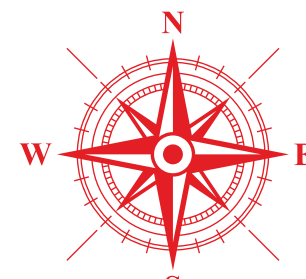
Scan after  
10<sup>th</sup> March 2020

## Typical Floor Plan

## Orchid & Tulip Block



← 40' Road →



## Location Map



- More than 5 Hospitals within 6 km radius
- More than 4 Nationally Recognized Colleges within 15 km radius
- More than 7 ICSE & CBSE Accredited Schools within 10 km radius
- More than 2 IT Hubs within 20 km Radius
- Recreation Sports Complex, Cineplanet within 5 km radius
- More than 5 Major Banks & ATM's within 2 km radius
- More than 5 Signature Restaurants within 7 km radius
- More than 5 branded Supermarkets within 2 km radius
- ORR within 8 km radius

## Specifications

<b>Structure</b>	RCC Framed structure.
<b>Superstructure</b>	CC block masonry in cement mortar
<b>Plastering</b>	Double coat sponge finished plastering on internal and external walls
<b>Flooring</b>	Hall, dining, bedrooms & kitchen corridor: CERA or equivalent vitrified tiles (600x600) Balconies & wash area: Good quality ceramic tiles (300x300)
<b>Electrical</b>	Concealed copper wiring of standard make Anchor / Polycab / Havells or equivalent; 3 phase supply for each flat; switches of Anchor Roma, MK, Legrand or equivalent
<b>Doors &amp; Windows</b>	<u>Main door &amp; internal doors:</u> Teak wood frame and moulded panel shutters aesthetically designed with fittings or reputed make <u>Windows:</u> Aluminum windows – three tracks
<b>Painting</b>	<u>Internal:</u> Smooth finish with cement based putty or equivalent over a coat of primer and top finish with two coats of plastic emulsion paint. <u>External:</u> Good quality exterior emulsion paint.
<b>TV &amp; Internet</b>	Wiring for TV, internet and telephone for each flat
<b>Kitchen</b>	Granite countertop with stainless steel sink. CERA or equivalent ceramic tiles dadoing up to 2 inches height above the kitchen platform
<b>Toilets</b>	Glazed CERA or equivalent tiles dadoing up to door frame height. Sanitary ware of CERA or equivalent. All CP fittings of premium quality from CERA/ ESS or equivalent make.
<b>Utility/ wash area</b>	CERA or equivalent glazed ceramic tiles dadoing up to 3 inches height.
<b>Power backup</b>	DG backup for lifts and common area lighting.
<b>Lift</b>	KONE or equivalent branded elevator.
<b>Designer landscaping</b>	Landscaping of areas around blocks H & I.