

Designed for fine living

At Eternia, you will experience a truly global lifestyle that puts your family at the centre of a unique living experience. The aesthetic sensibilities gently add to form and functionality. There's ample space within and around your home. Your world of evolved living is also seamlessly connected to the world outside. Simply put, Eternia is what modern living should be.

ETERNIA
BY OBEROI REALTY

Partnership made for luxury

When space is a luxury, Eternia is the ultimate prize you should possess. Here, airy and spacious rooms open to wide-open play areas for your kids. Long jogging tracks lead you through verdant gardens and expansive walkways let you take an easy stroll and capture some of the most enchanting views ever.

However, so much luxury and space was not created by mere chance, but through a partnership between Oberoi Realty - one of India's leading real estate companies, HB Design as architects and Larsen & Toubro as construction partners.

ETERNIA

BY OBEROI REALTY



Every small detail counts

- Imported marble flooring for living, dining, kitchen and all bedrooms
- Vitrified/ceramic tiles for bathroom flooring and dado
- Wash basin counters
- Vitrified/ceramic tiles dado 2 feet high above kitchen platform
- Kitchen platform with stainless steel sink and drain board
- Anti-skid tiles in the balcony areas (wherever applicable)
- Aluminium windows
- Concealed plumbing
- Branded C.P. fittings
- Branded electrical switches
- Video door phone
- Laminated flush doors
- Split ACs*
- Modular Kitchen*
- Wardrobe*

*Optional Fittings/Furniture/Fixtures/Equipment on chargeable basis and as per terms and conditions specified by the developer.

ETERNIA
BY OBEROI REALTY



Actual images from other completed Oberoi Realty projects used for representational purposes only

Amenities crafted with flair

Eternia is home to luxury and style. And its clubhouse only reiterates this fact. Overlooking a pool, it lets you relax and unwind from the daily grind. Take a dip in the pool, work out at the gym or play an exciting sport; the Clubhouse is your perfect getaway from the hustle and bustle of the city.

- Landscaped Garden • Entrance Lobby with High Ceiling • CCTV in Select Common Areas • Children's Play Area • Jogging Track • Squash Courts • Skating Rink
- Swimming Pool • Kids' Pool • Gymnasium • Steam Room • Yoga/Meditation Room • Multipurpose Hall • Indoor Games Area • High Speed Elevators
- Back-up Generator for Emergency Power • Launderette* • Convenience Store* • Day Care Center* • Doctor's Room/First Aid* • Salon* • Café*

*Space will be provided. Amenities to be run by third party on chargeable basis.

ETERNIA
BY OBEROI REALTY

Proposed elevation of Eternia

Designed to inspire awe

Eternia is an architectural marvel. One look and it will leave a lasting impression on you. The minimalist yet flamboyant architectural style, the perfect lines and the colours and the radiant glass facade make them a sight to behold. Every step you take at Eternia, you will experience this unique design philosophy married seamlessly into every amenity.

ETERNIA
BY OBEROI REALTY



Perfection is second nature

Eternia perfects on perfection. It is a shining example of what can be achieved when technology and talent meet. A rare amalgamation of cutting-edge engineering, state-of-the-art architecture and skilled craftsmanship, it gives you everything you need for life in the fast lane.

ETERNIA
BY OBEROI REALTY

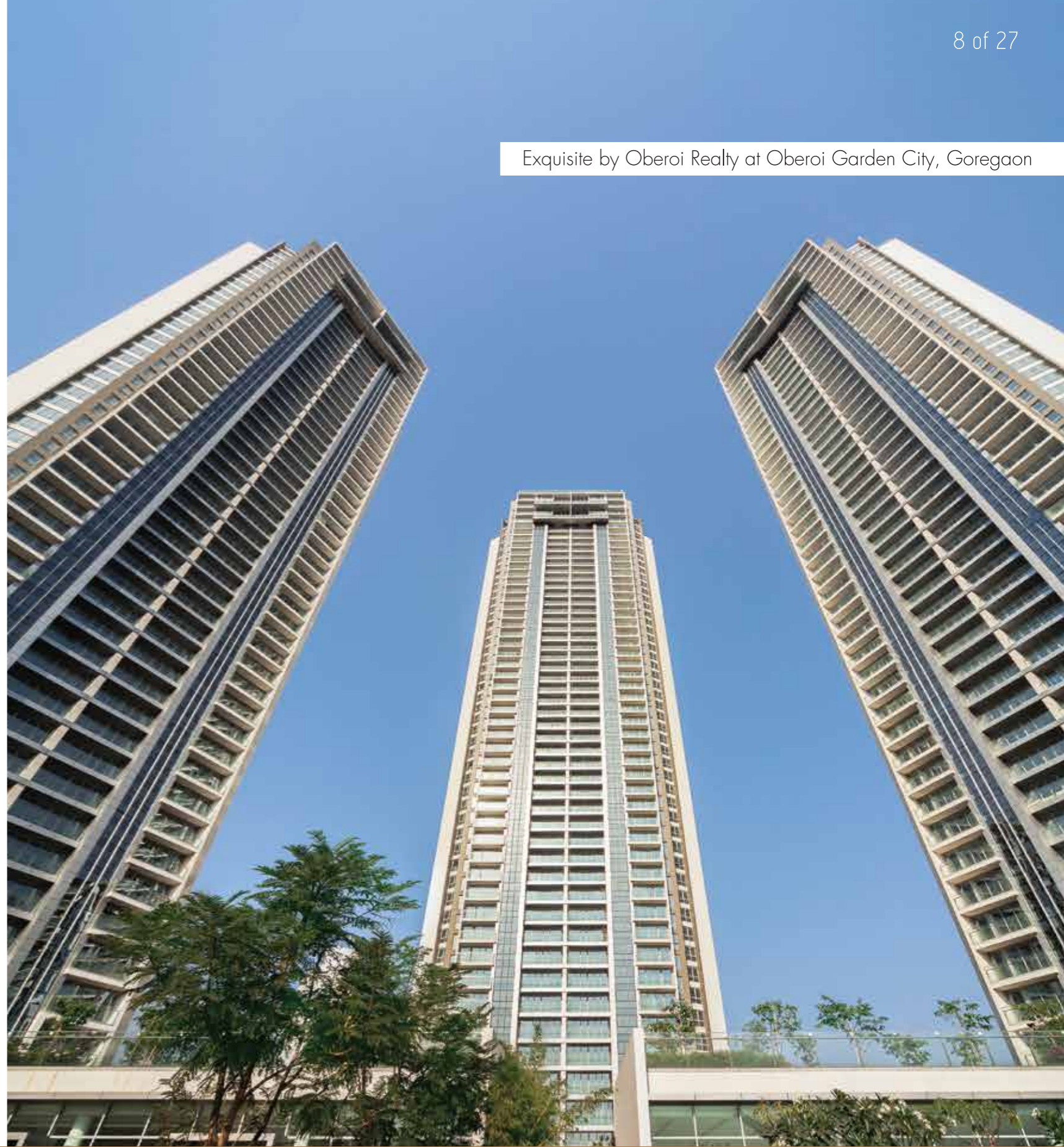


The Oberoi Realty journey thus far

ETERNIA --- BY OBEROI REALTY

Exquisite by Oberoi Realty at Oberoi Garden City, Goregaon

Exquisite in every
respect



The Oberoi Realty journey thus far

Woods at Oberoi Garden City, Goregaon



Nature's way of life

The Oberoi Realty journey thus far

Splendor & Splendor Grande at JVL, Andheri



Luxurious living
doesn't get better
than this

The Oberoi Realty journey thus far

Disclaimer : This document does not constitute an offer and/or acceptance and/or contract and/or agreement and/or transaction and/or any intention thereof and/or a disclosure under any statute of any nature whatsoever. The pictorial/other representations herein, the layout, number/orientation of buildings/towers/wings/structures, facilities and amenities are merely creative imagination and an Architect's impression and are only indicative. Actual product may vary/differ from what is indicated herein. The photographs contained herein may be stock/standard photography used for the purpose and have been taken at a location other than the project site and are used to indicate a conceptual lifestyle. For detailed disclaimers refer to the page "Disclaimers" (page no. 26) all of which are deemed to be incorporated herein.

Eterna Towers A to D
MahaRERA Registration No: P51800006141
View details at <https://maharera.mahaonline.gov.in>



Location Map

- PROPOSED METRO STATION - 0.6 KM
- EASTERN EXPRESS HIGHWAY WAY - 3.6 KM
- MULUND STATION - 2.3 KM
- SHOPPING MALL - 1.9 KM
- HOSPITAL - 1.4 KM

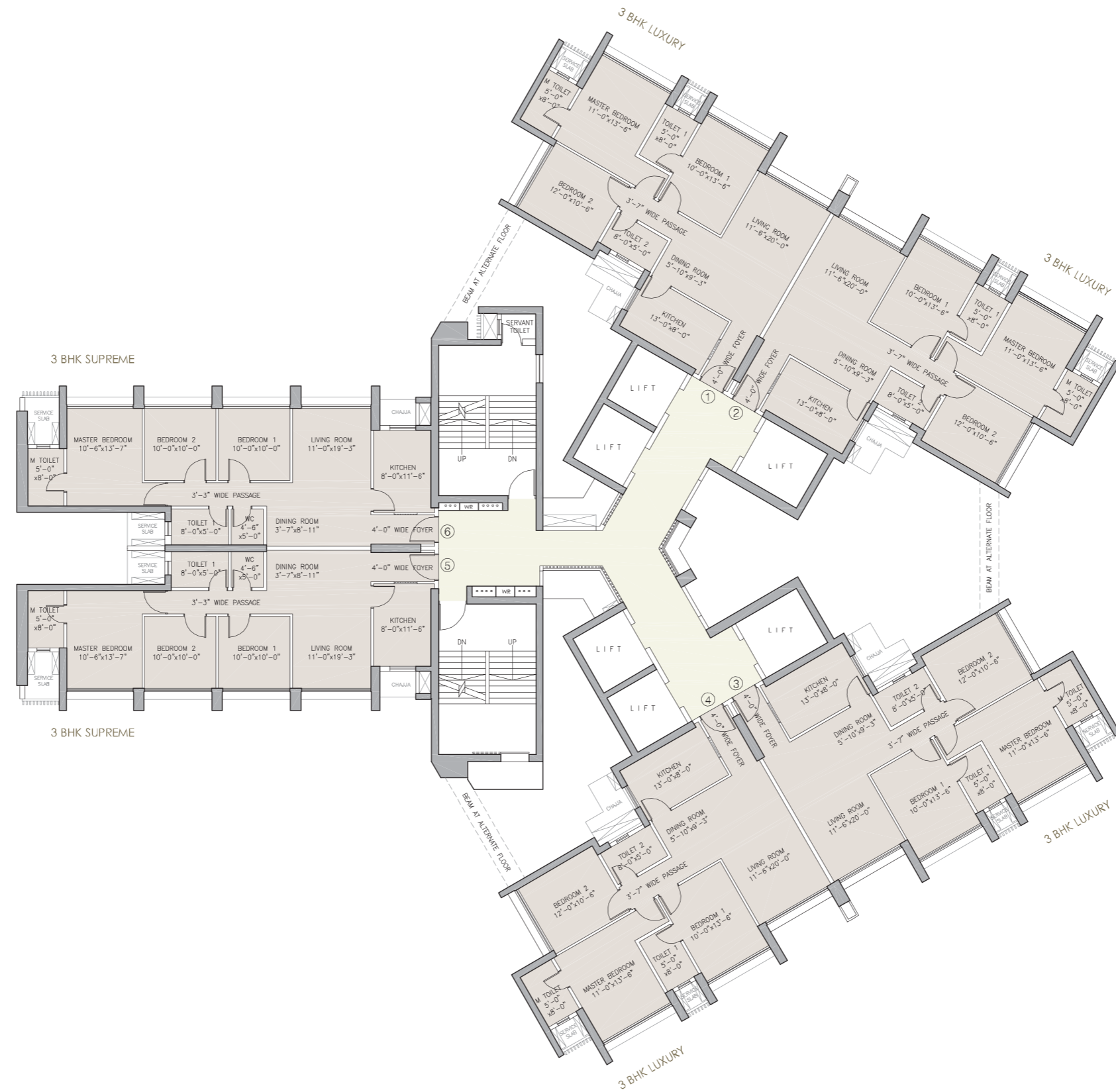


SITE PLAN

ETERNIA AT MULUND, MUMBAI

Disclaimer: This document is representative of the Approved Layout With Phasing/User Superimposed, pertaining to the overall development of the layout and is a mere creative imagination and is only indicative. This document shall be considered for representational purposes only, with the intention to provide an impression of the layout as presently proposed and/or approved. The Approved Layout With Phasing/User Superimposed may be modified and amended as mentioned in the proforma Agreement for Sale and permissible under applicable law. For detailed disclaimers refer to the page "Disclaimers" (page no. 26) all of which are deemed to be incorporated herein.

Eternia Towers A to D
 MahaRERA Registration No: P51800006141
 View details at <https://maharera.mahaonline.gov.in>

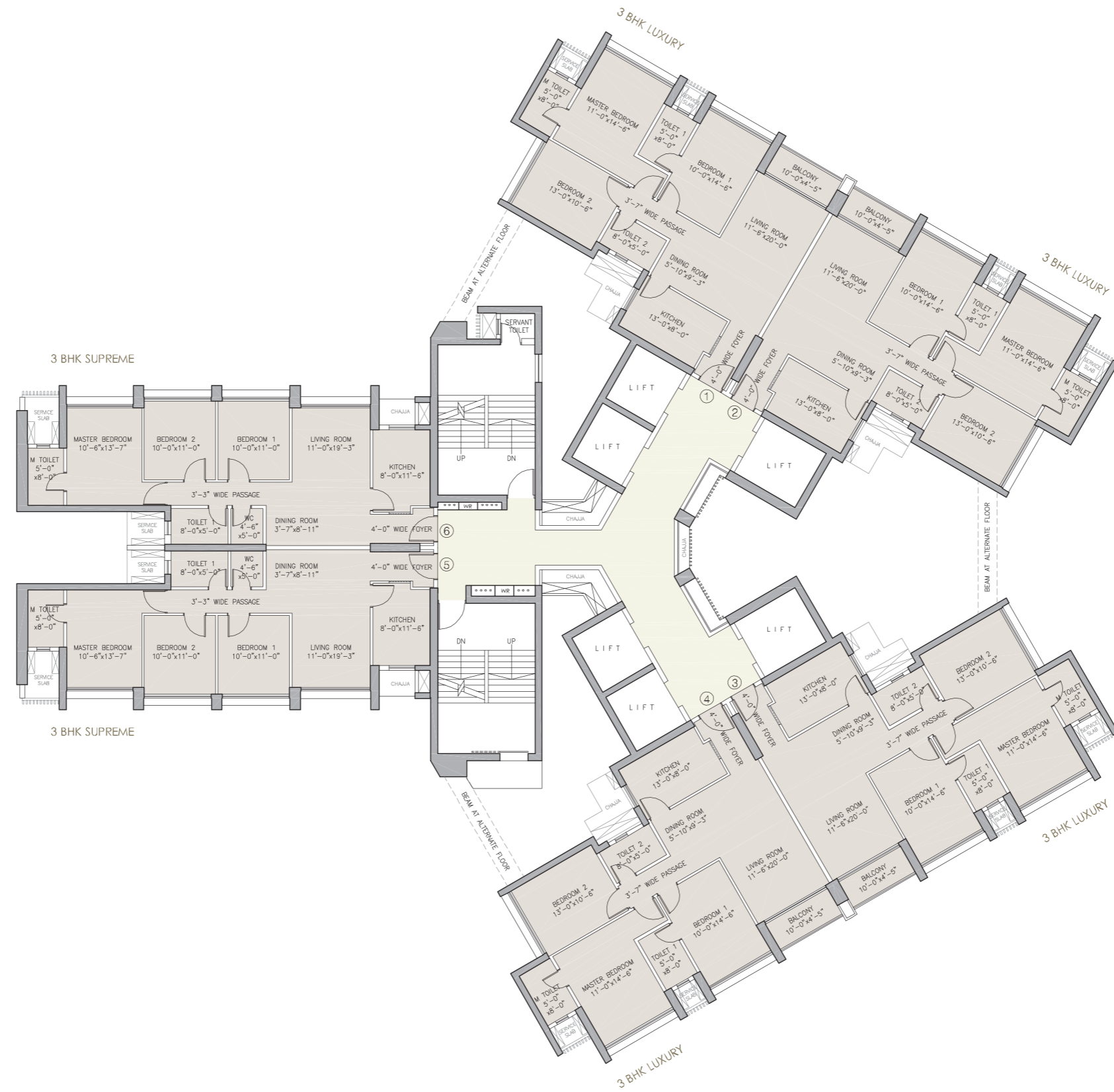


TOWER A TYPICAL FLOOR PLAN - ZONE 1

ETERNIA AT MULUND, MUMBAI

Disclaimer: The dimensions mentioned on these floor plans are as per the plans approved by the MCGM and the same are subject to construction exigencies. This document may be modified and amended as mentioned in the proforma Agreement for Sale. For detailed disclaimers refer to the page "Disclaimers" (page no. 26) all of which are deemed to be incorporated herein.

Eterna Towers A to D
 MahaRERA Registration No: P51800006141
 View details at <https://maharera.mahaonline.gov.in>

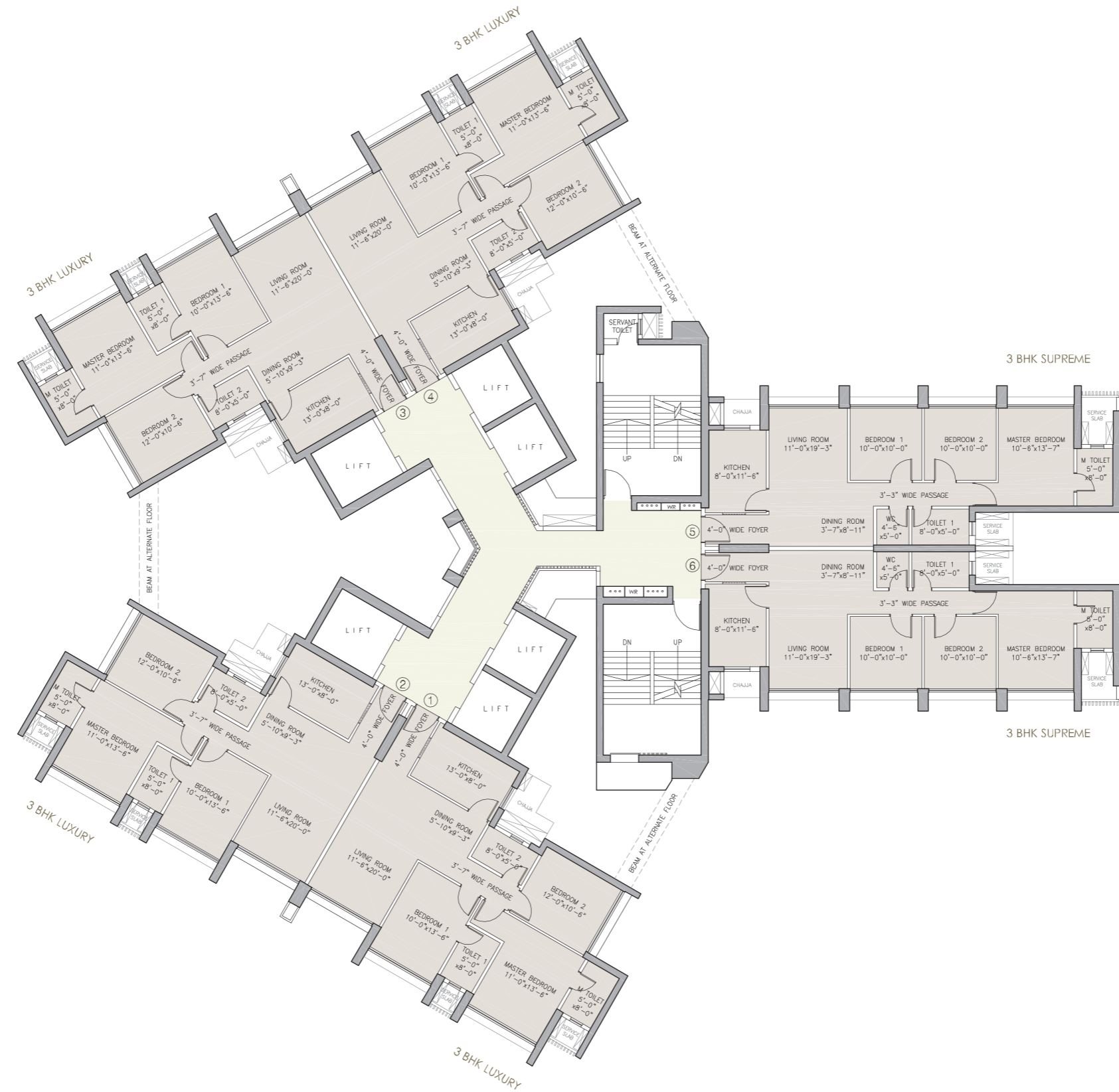


TOWER A TYPICAL FLOOR PLAN - ZONE 2

ETERNIA AT MULUND, MUMBAI

Disclaimer: The dimensions mentioned on these floor plans are as per the plans approved by the MCGM and the same are subject to construction exigencies. This document may be modified and amended as mentioned in the proforma Agreement for Sale. For detailed disclaimers refer to the page "Disclaimers" (page no. 26) all of which are deemed to be incorporated herein.

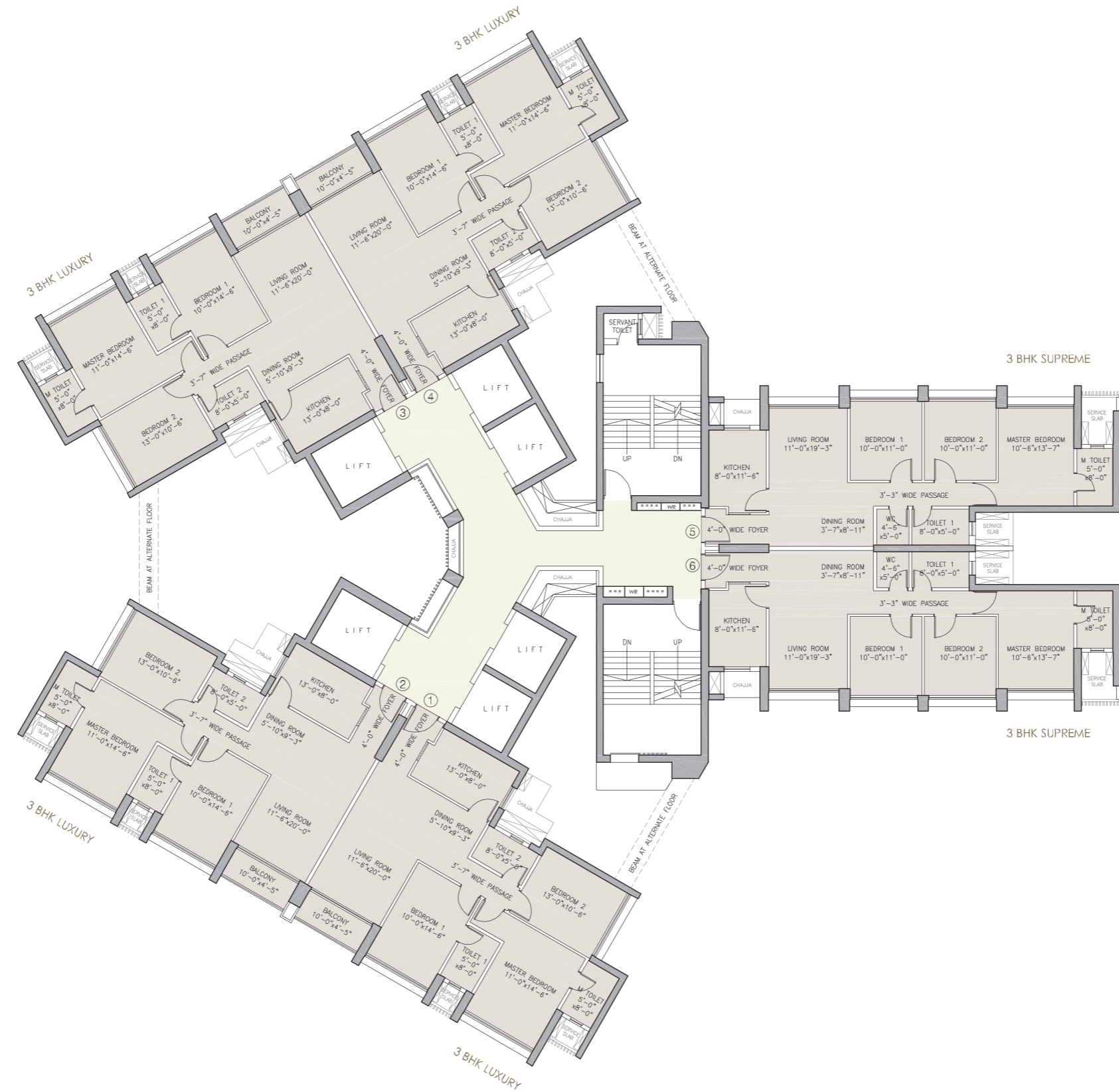
Eterna Towers A to D
 MahaRERA Registration No: P51800006141
 View details at <https://maharera.mahaonline.gov.in>



TOWER B TYPICAL FLOOR PLAN - ZONE 1

ETERNIA AT MULUND, MUMBAI

Disclaimer: The dimensions mentioned on these floor plans are as per the plans approved by the MCGM and the same are subject to construction exigencies. This document may be modified and amended as mentioned in the proforma Agreement for Sale. For detailed disclaimers refer to the page "Disclaimers" (page no. 26) all of which are deemed to be incorporated herein.

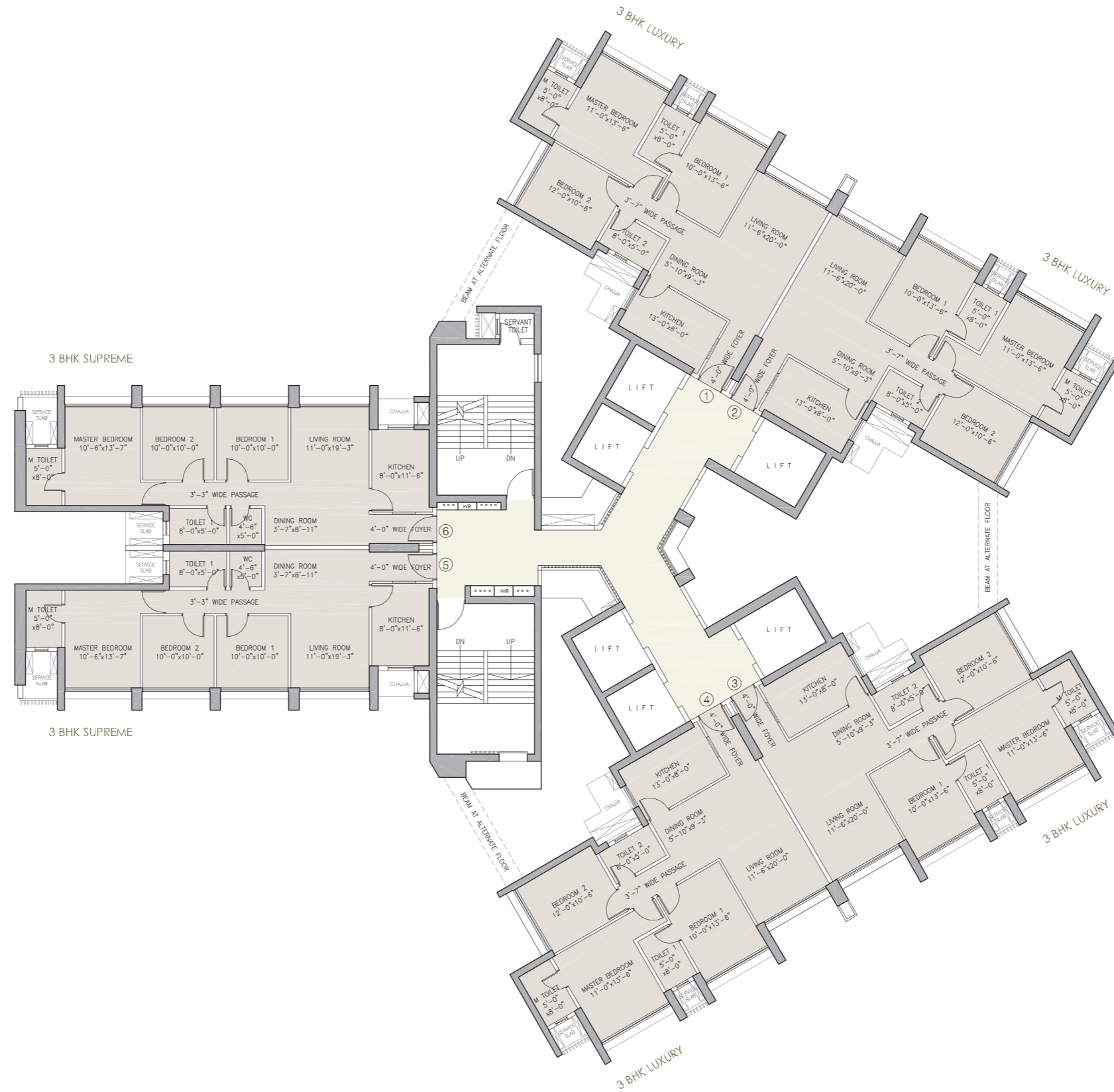


TOWER B TYPICAL FLOOR PLAN - ZONE 2

ETERNIA AT MULUND, MUMBAI

Disclaimer: The dimensions mentioned on these floor plans are as per the plans approved by the MCGM and the same are subject to construction exigencies. This document may be modified and amended as mentioned in the proforma Agreement for Sale. For detailed disclaimers refer to the page "Disclaimers" (page no. 26) all of which are deemed to be incorporated herein.

Eternia Towers A to D
MahaRERA Registration No: P51800006141
View details at <https://maharera.mahaonline.gov.in>

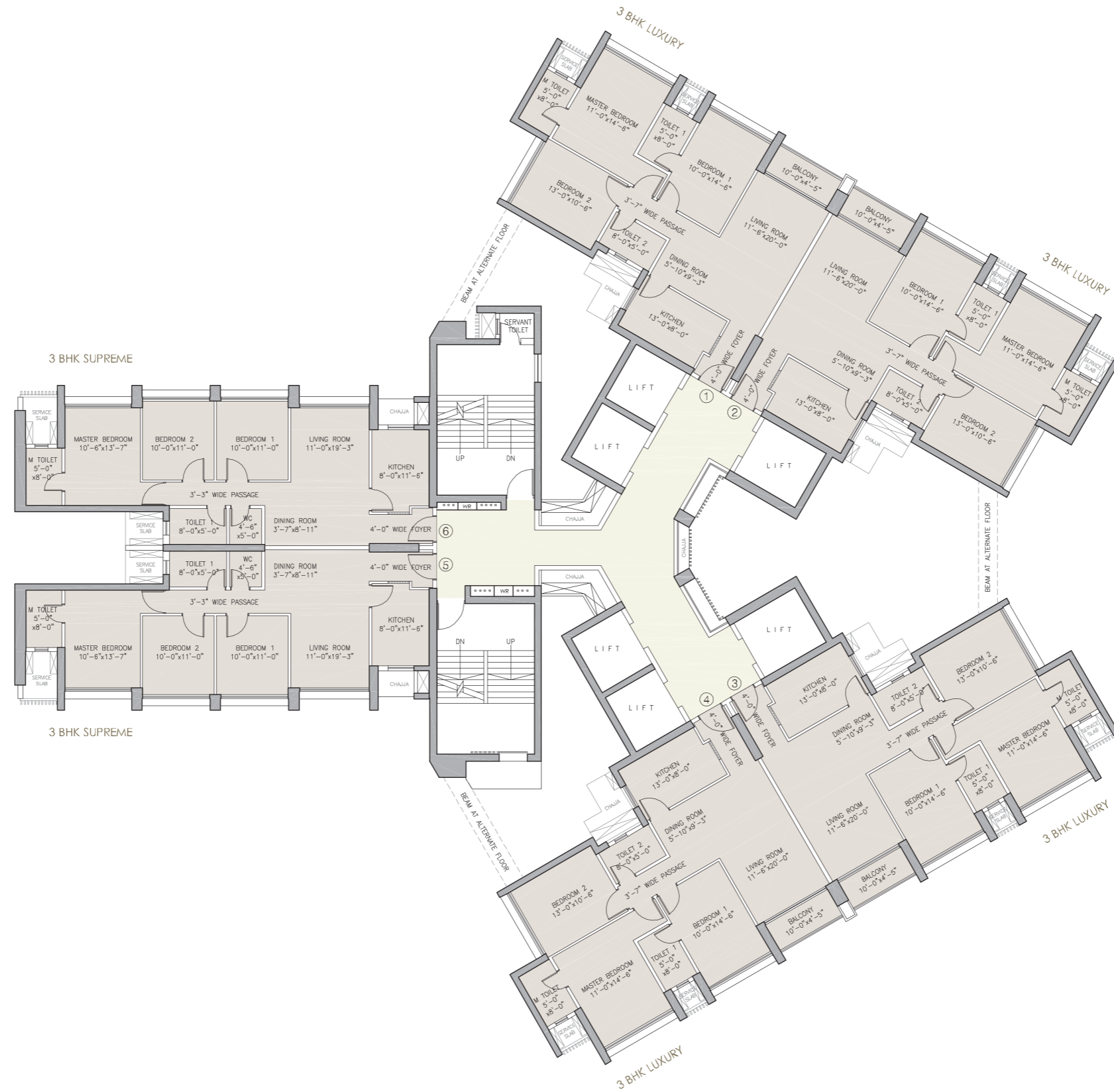


TOWER C TYPICAL FLOOR PLAN - ZONE 1

ETERNIA AT MULUND, MUMBAI

Disclaimer: The dimensions mentioned on these floor plans are as per the plans approved by the MCGM and the same are subject to construction exigencies. This document may be modified and amended as mentioned in the proforma Agreement for Sale. For detailed disclaimers refer to the page "Disclaimers" (page no. 26) all of which are deemed to be incorporated herein.

Eterna Towers A to D
 MahaRERA Registration No: P51800006141
 View details at <https://maharera.mahaonline.gov.in>

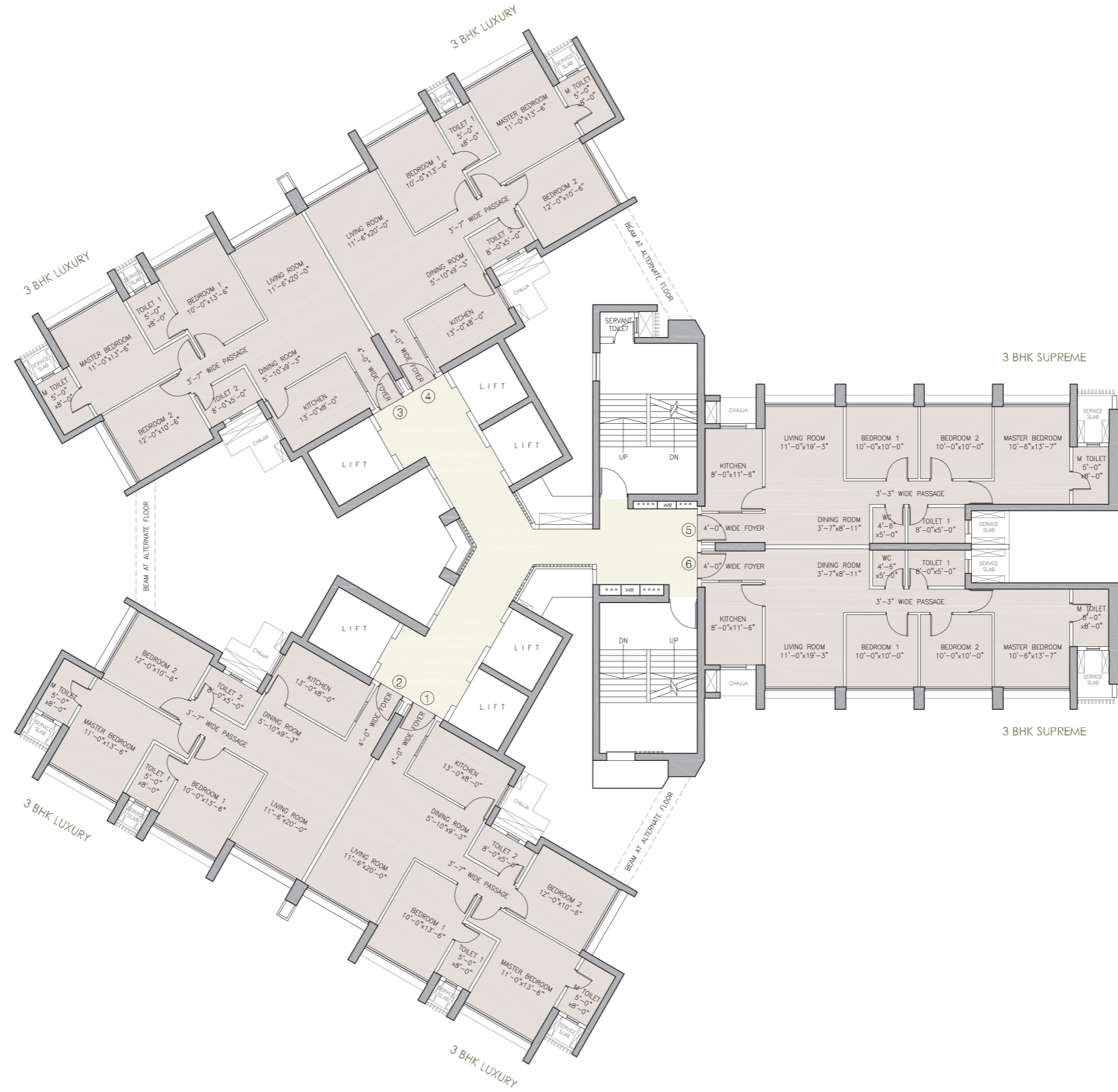


TOWER C TYPICAL FLOOR PLAN - ZONE 2

ETERNIA AT MULUND, MUMBAI

Disclaimer: The dimensions mentioned on these floor plans are as per the plans approved by the MCGM and the same are subject to construction exigencies. This document may be modified and amended as mentioned in the proforma Agreement for Sale. For detailed disclaimers refer to the page "Disclaimers" (page no. 26) all of which are deemed to be incorporated herein.

Eterna Towers A to D
 MahaRERA Registration No: P51800006141
 View details at <https://maharera.mahaonline.gov.in>

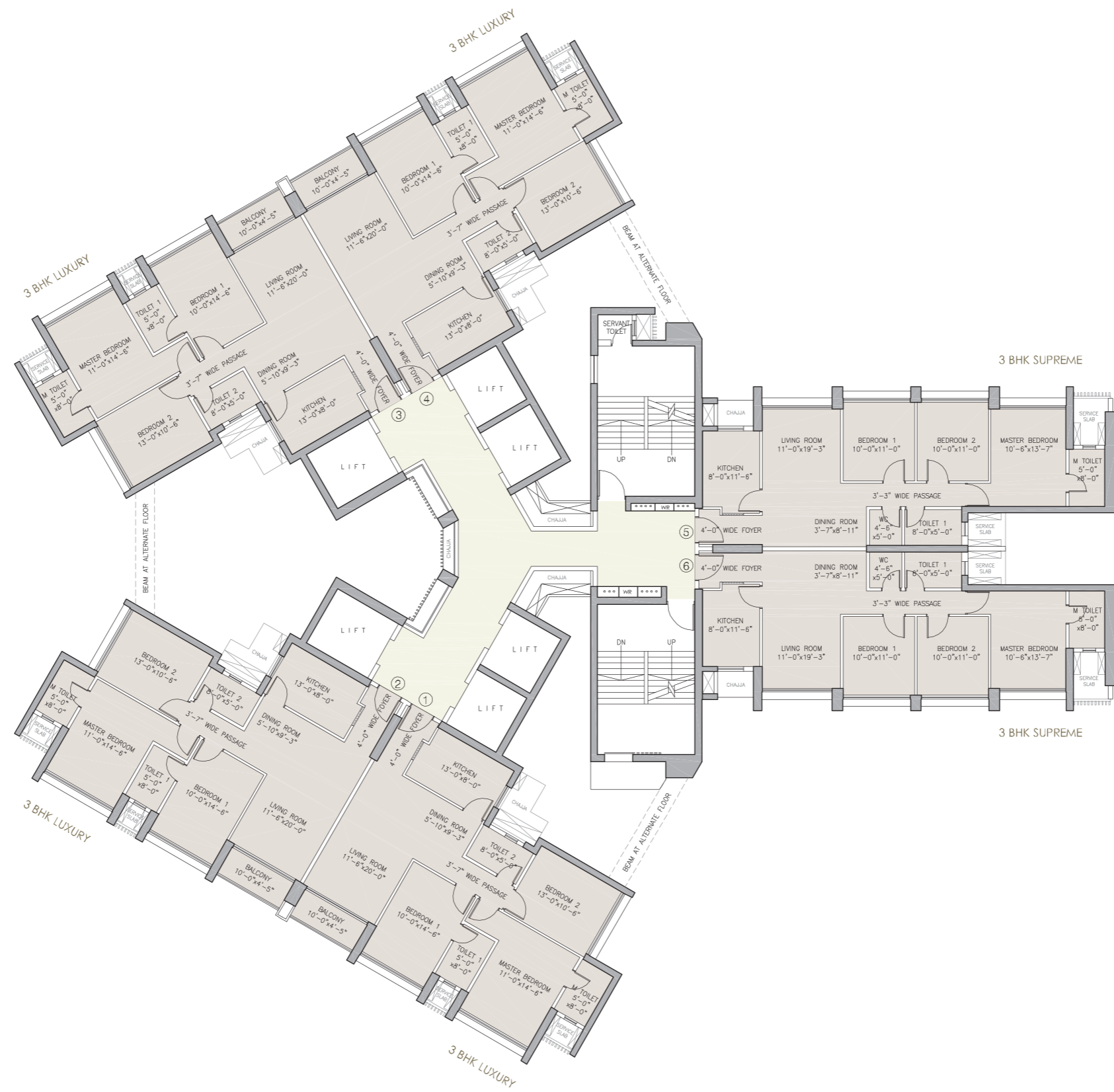


TOWER D TYPICAL FLOOR PLAN - ZONE 1

ETERNIA AT MULUND, MUMBAI

Disclaimer: The dimensions mentioned on these floor plans are as per the plans approved by the MCGM and the same are subject to construction exigencies. This document may be modified and amended as mentioned in the proforma Agreement for Sale. For detailed disclaimers refer to the page "Disclaimers" (page no. 26) all of which are deemed to be incorporated herein.

Eterna Towers A to D
MahaRERA Registration No: P51800006141
View details at <https://maharera.mahaonline.gov.in>

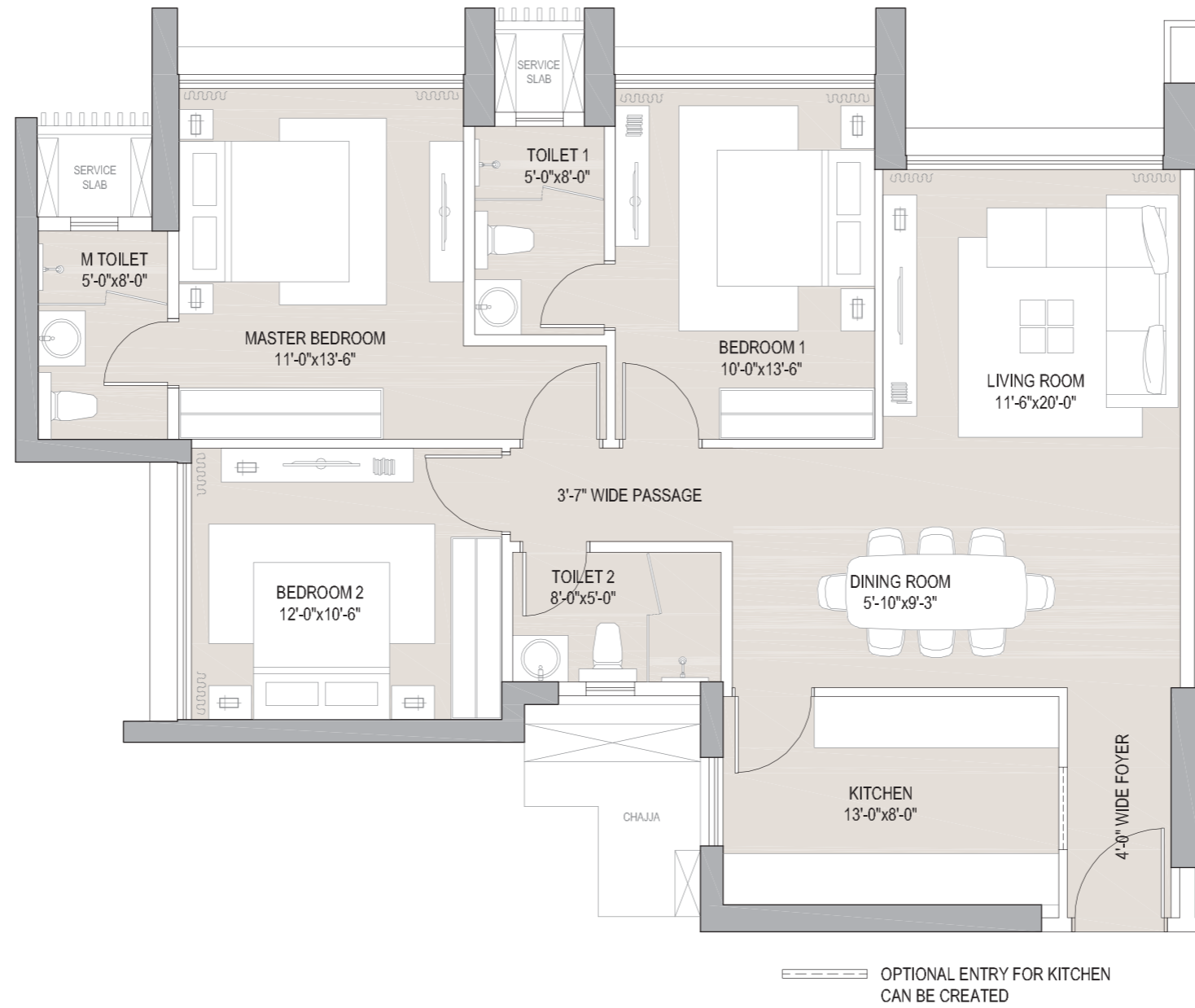


TOWER D TYPICAL FLOOR PLAN - ZONE 2

ETERNIA AT MULUND, MUMBAI

Disclaimer: The dimensions mentioned on these floor plans are as per the plans approved by the MCGM and the same are subject to construction exigencies. This document may be modified and amended as mentioned in the proforma Agreement for Sale. For detailed disclaimers refer to the page "Disclaimers" (page no. 26) all of which are deemed to be incorporated herein.

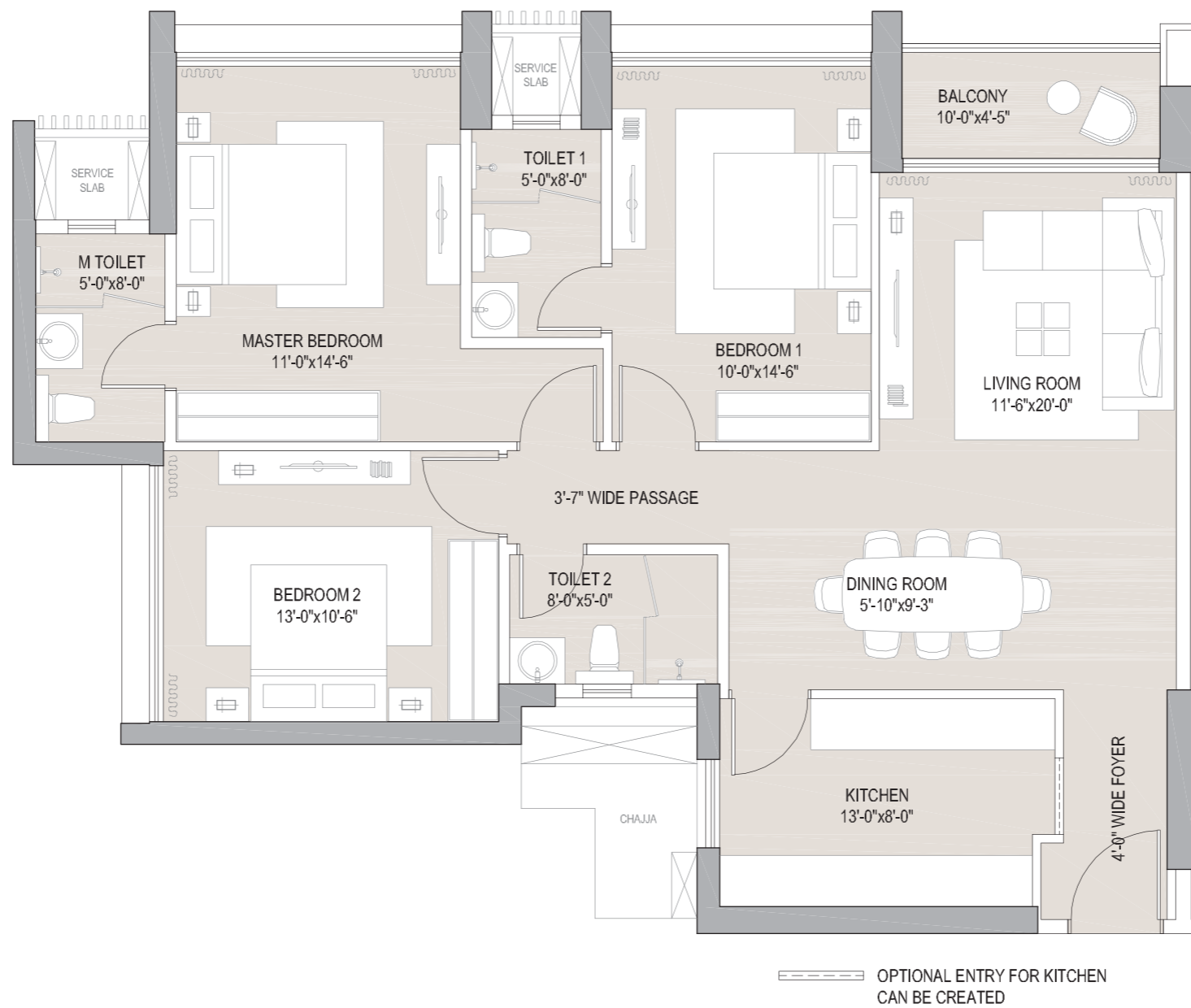
Eternia Towers A to D
 MahaRERA Registration No: P51800006141
 View details at <https://maharera.mahaonline.gov.in>



TYPICAL APARTMENT PLAN 3 BHK LUXURY - ZONE 1

ETERNIA AT MULUND, MUMBAI

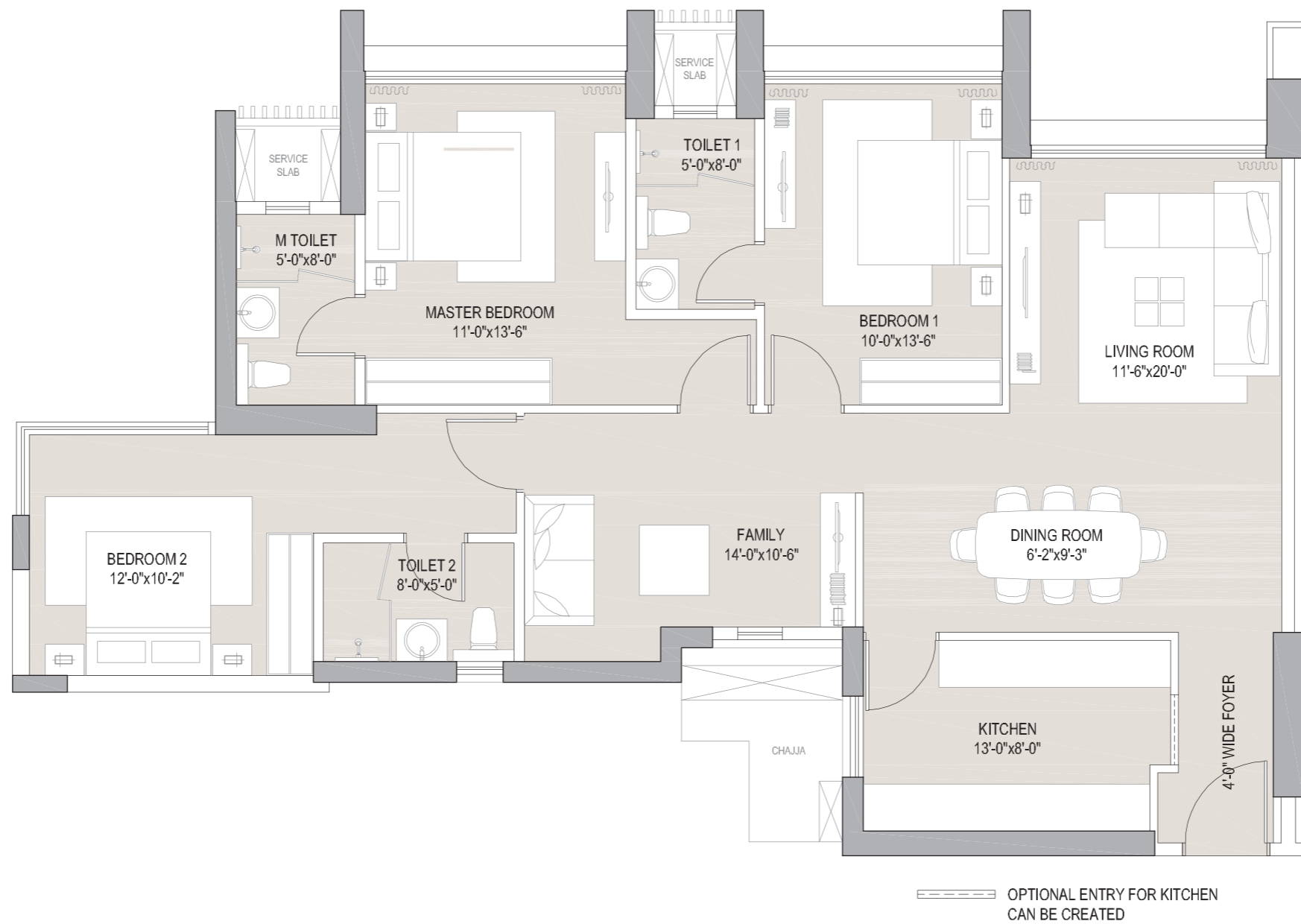
Disclaimer: The dimensions mentioned on these floor plans are as per the plans approved by the MCGM and the same are subject to construction exigencies. This document may be modified and amended as mentioned in the proforma Agreement for Sale. For detailed disclaimers refer to the page "Disclaimers" (page no. 26) all of which are deemed to be incorporated herein.



TYPICAL APARTMENT PLAN 3 BHK LUXURY - ZONE 2

ETERNIA AT MULUND, MUMBAI

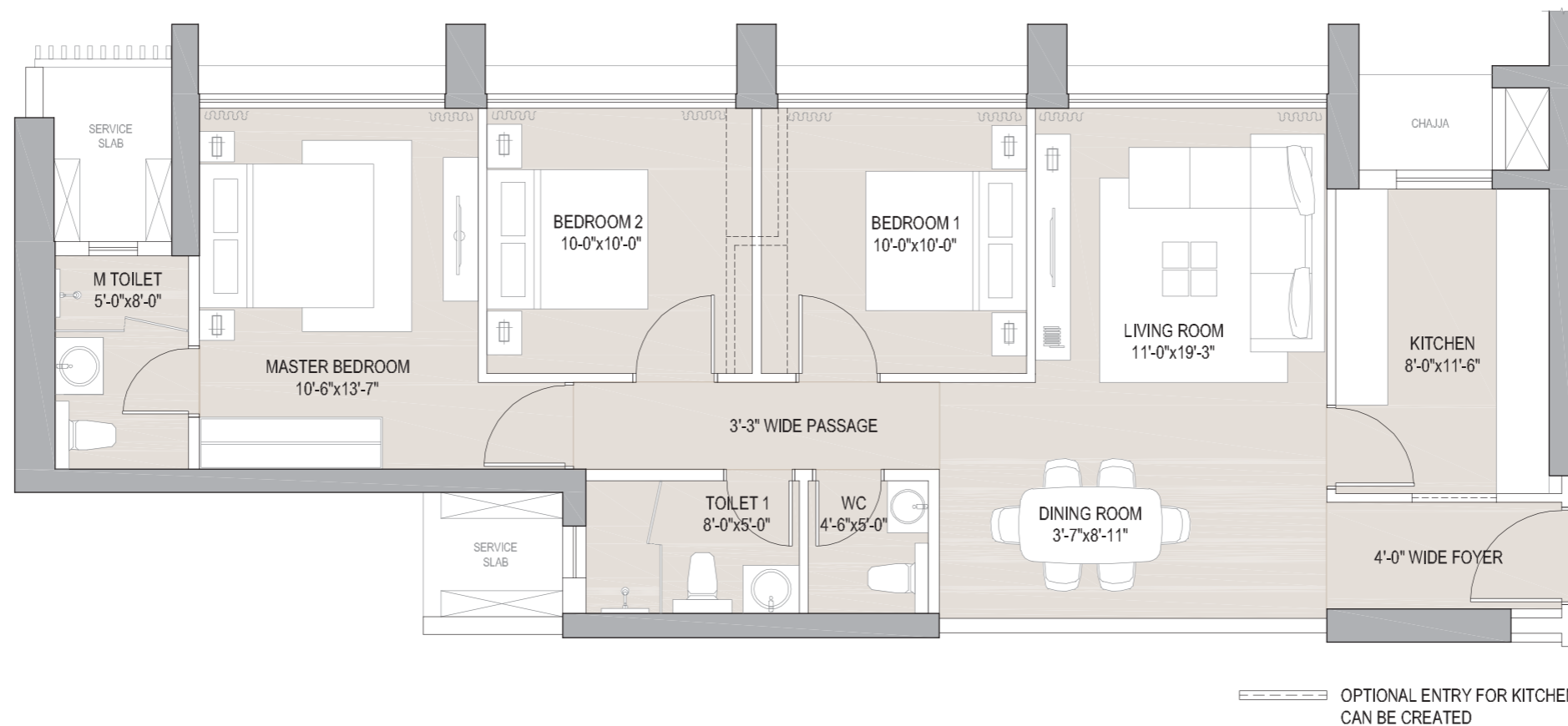
Disclaimer: The dimensions mentioned on these floor plans are as per the plans approved by the MCGM and the same are subject to construction exigencies. This document may be modified and amended as mentioned in the proforma Agreement for Sale. For detailed disclaimers refer to the page "Disclaimers" (page no. 26) all of which are deemed to be incorporated herein.



TYPICAL APARTMENT PLAN 3 BHK SUPERIOR LUXURY

ETERNIA AT MULUND, MUMBAI

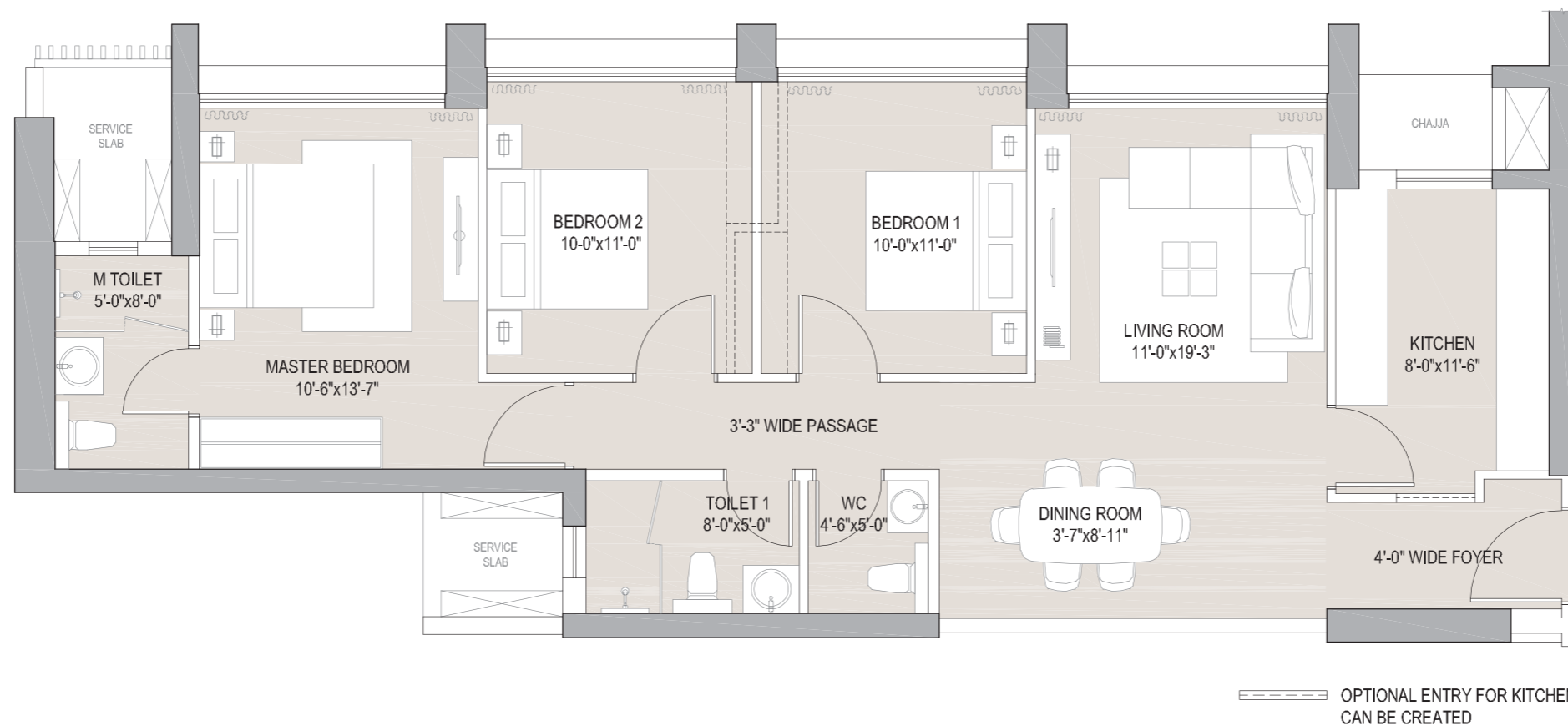
Disclaimer: The dimensions mentioned on these floor plans are as per the plans approved by the MCGM and the same are subject to construction exigencies. This document may be modified and amended as mentioned in the proforma Agreement for Sale. For detailed disclaimers refer to the page "Disclaimers" (page no. 26) all of which are deemed to be incorporated herein.



TYPICAL APARTMENT PLAN 3 BHK SUPREME - ZONE 1

ETERNIA AT MULUND, MUMBAI

Disclaimer: The dimensions mentioned on these floor plans are as per the plans approved by the MCGM and the same are subject to construction exigencies. This document may be modified and amended as mentioned in the proforma Agreement for Sale. For detailed disclaimers refer to the page "Disclaimers" (page no. 26) all of which are deemed to be incorporated herein.



TYPICAL APARTMENT PLAN 3 BHK SUPREME - ZONE 2

ETERNIA AT MULUND, MUMBAI

Disclaimer: The dimensions mentioned on these floor plans are as per the plans approved by the MCGM and the same are subject to construction exigencies. This document may be modified and amended as mentioned in the proforma Agreement for Sale. For detailed disclaimers refer to the page "Disclaimers" (page no. 26) all of which are deemed to be incorporated herein.

