

IMAGINE
LIFE

— AT —

**INDIA'S FIRST
ENERGY HOMES**



— THE —
PYRAMID
RAJARHAT, KOLKATA

www.mounthillrealty.com

10,000-YEAR-OLD SECRET OF HEALTH,
WEALTH AND PROSPERITY.

THE FIRST-OF-ITS-KIND OPPORTUNITY TO LIVE IT.



A tribute to human ingenuity in engineering innovation, the age old Pyramids have stood the test of time and have been regarded as one of the 8 wonders of the world.

The structural design of a Pyramid consists of three-dimensional triangles, with large bases tapering towards the top and four faces with an accurate or 'golden angle of inclination' at $51^{\circ} 51' 51''$.

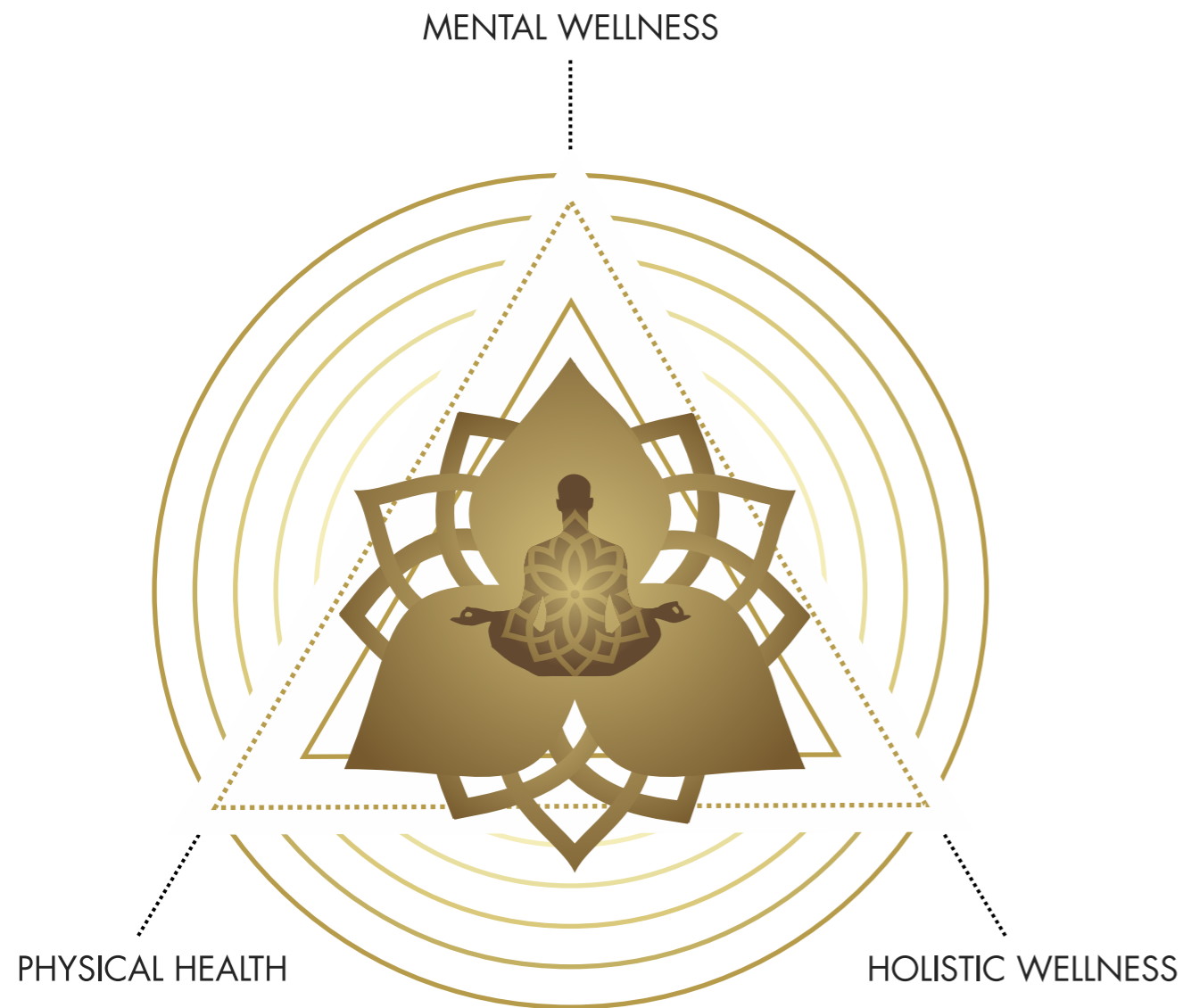
Due to its unique shape and angle the structure gets perfectly aligned to the Earth's magnetic field thereby making it the greatest receiver and transmitter of cosmic energy. The capability of a Pyramid is reflected in the name itself where 'Pyro' means 'fire' or energy and 'amid' means 'centre' or within. A Pyramid thus is a device with energy at its centre. This is the reason for it being a storehouse of energy drawn from the universe.

Pyramid Energy is renowned for its ability for quick healing, increased immunity, reduction of negative thoughts, higher productivity and increased effectiveness. This 10,000 year-old secret of health, wealth and prosperity is now being used for the first time in Kolkata to create a unique community living habitat, that will offer its discerning residents the opportunity to embrace life in the energy centre.

Welcome to The Pyramid at Rajarhat.

SENSE THE COSMIC ENERGY FLOWING ALL AROUND YOU TO LIVE IT.

PYRAMID ENERGY BENEFITS



MENTAL WELLNESS



- Pyramid Meditation is 3 times more effective than normal meditation



- Altered state of consciousness
- Achievement of the thoughtless state of mind



- Complete relaxation of the body

PHYSICAL HEALTH



- Quick healing & increased immunity
- Elimination of harmful toxins



- Exercise in Pyramids builds endurance
- Sports in Pyramids increases stamina and training time



- Activation of body cells & blood circulation
- Increased effectiveness

HOLISTIC WELLNESS



- Plants grown in Pyramid Greenhouses grow faster



- More healthier, less prone to damage by insects



- Food grown in Pyramid Gardens tastes better
- They remain fresh for a longer period

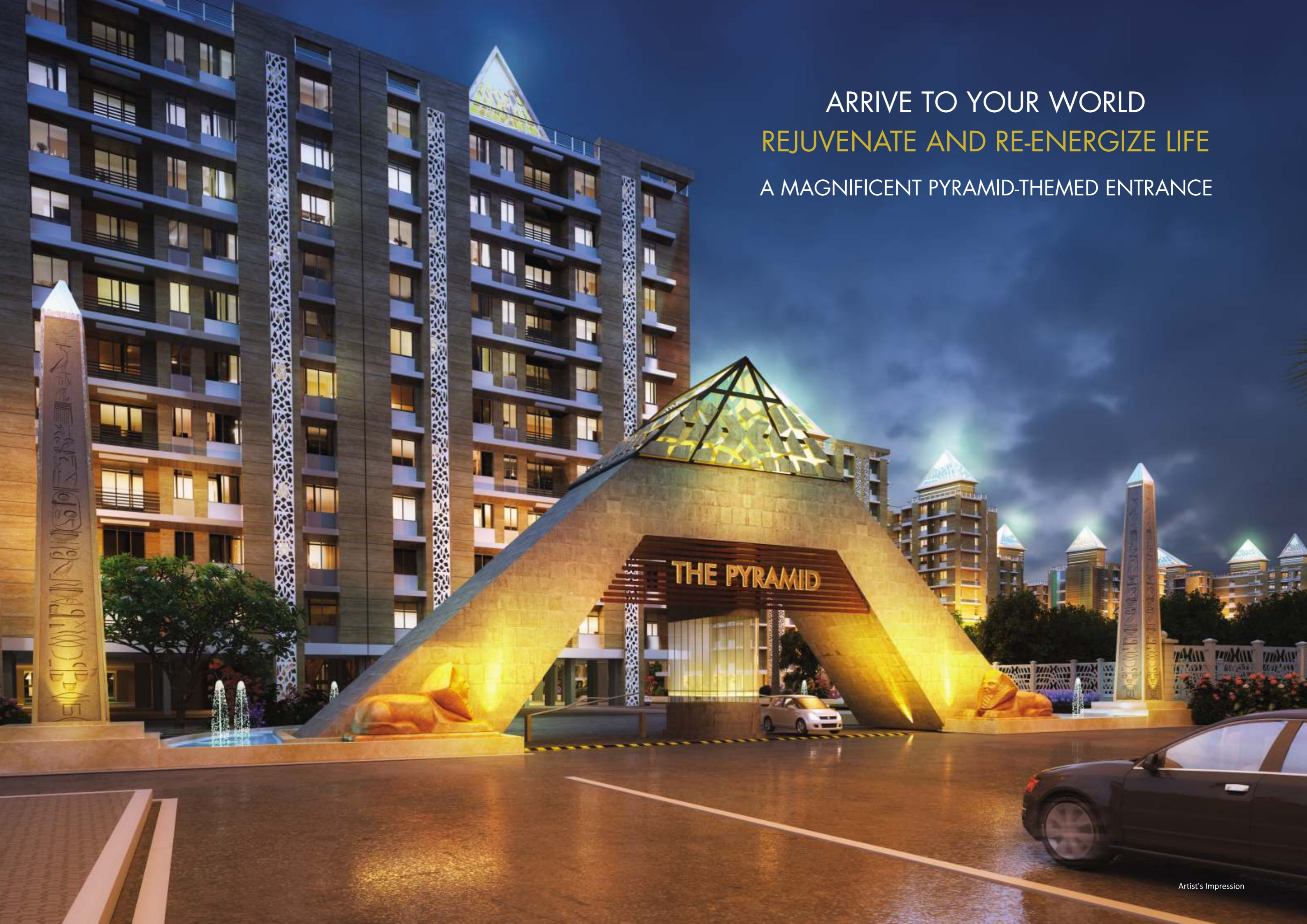


- 20% -100% increase in yield



- Prevention of decay by complete stop in growth of microorganisms

ARRIVE TO YOUR WORLD
REJUVENATE AND RE-ENERGIZE LIFE
A MAGNIFICENT PYRAMID-THEMED ENTRANCE



FEEL AND EXPERIENCE THE PURE AND INFINITE ENERGY OF THE UNIVERSE

The shape of the Pyramid is connected with five universal elements namely, Earth, Water, Fire, Air & Ether. From ancient times, the Pyramid has been known as a powerful design that connects to energy forces and emits healing qualities. It directs the electromagnetic energy surrounding the Earth from stars & planets of the Universe. Emitting the positive energy, the Pyramid power enhances mental, physical & emotional states and acts as a perfect Vastu design.

With all the benefits of positive energies of the Universe, The Pyramid at Rajarhat is all set to create a unique aura of cosmic energy for its residents.

PRISTINE HEALTH

WATER MOLECULES GET ENERGISED WITH PYRAMID ENERGY



UNIVERSAL KNOWLEDGE

ABILITY TO FOCUS IS THREE TIMES MORE WITH PYRAMID ENERGY



COSMIC HEALING

CURING PROCESS IS FASTER WITH PYRAMID ENERGY



ETERNAL AWARENESS

SPIRITUAL ENLIGHTENMENT IS BETTER WITH PYRAMID ENERGY

ENRICHED NUTRITION

NOURISHMENT IS RETAINED LONGER WITH PYRAMID ENERGY



ABUNDANT WEALTH

DECISION MAKING IS ENHANCED WITH PYRAMID ENERGY



CELESTIAL PROSPERITY

VASTU DEFECTS ARE MINIMISED WITH PYRAMID ENERGY



TRANQUIL ENVIRONMENT

FIVE ELEMENTS ARE IN HARMONY WITH PYRAMID ENERGY

10 ACRES, 1000 HOMES ONE VIBRANT & ENERGETIC COMMUNITY

Discover all the positive aspects of the Universe offering best of health, wealth & prosperity at The Pyramid. Being one of Kolkata's largest residential projects bringing the positive energy into the lives of its residents, The Pyramid will soon be known as the wonder of Kolkata situated in Rajarhat. The design of these towers is a testament to engineering innovation, ushering in a life filled with vim, vigour and vitality. It's time to live in absolute positivity. Welcome to MountHill's Pyramid.

PROJECT KEY FEATURES

17 towers of G+10 storeys

Spread across a massive area of over 10 acres with 70% landscaped open area

Meticulously planned 2, 3 & 4 BHK energy homes

First-of-its-kind pyramid greenhouse, food garden, floating clubhouse, sports club & much more

15,000 sq. ft. of retail & commercial area dedicated for daily conveniences

3-tier security & ample parking area





Legend

Outdoor Amenities

1. Main Entry & Exit
2. Waterbody at Main Entrance
3. Waterbody with Pyramid Sculpture
4. Amphitheatre
5. Reflexology Path
6. Multipurpose Court
7. Pyramid Pavilion
8. Children's Play Area
9. Ionised Swimming Pool
10. Party Lawn Area
11. Pyramid Sculpture
12. Nana Nani Park
13. Open Library
14. Totem Pole
15. Game Court
16. Badminton Court

17. Meditation Area
18. Tennis Court
19. Zen Garden
20. Herbal Garden
21. Function & Banquets
22. Sculpture Garden

Indoor Amenities

23. Ground Floor
 - A - Gymnasium
 - B - Cards Room
 - C - Library
 - D - Multipurpose Hall
 - E - Squash Court
 - F - Table Tennis, Carom, Billiards
24. First Floor Swimming Pool & Amenities
25. Second Floor Amenities

REDISCOVER YOUR HEALTH
IN A MOST REFRESHING WAY

IONISED SWIMMING POOL
WITH PYRAMID CABANAS



THE EXOTIC LIFESTYLE FEATURES USHERING UNIVERSAL ENERGY

FIRST-OF-ITS-KIND PYRAMID-THEMED FEATURES

- Premium Clubhouse with Pyramid Meditation enclave
- Exquisite Pyramid Greenhouse
- Specially Created Community Pyramid Food Garden
- Performance Enhancing Pyramid Sports Club
- Pyramid Pavilions

EXTRAVAGANT EXTERNAL FEATURES

- Grand Entrance with Water Body
- 7 Acre Zen Garden
- Town Squares
- Palm Court
- Party Lawn Area
- Air-conditioned Fitness Centre
- Ionised Swimming Pool
- Pool-side Pavilion
- Reflexology Path
- Yoga and Meditation Area
- Multipurpose Play Court
- Children's play Area
- Amphitheatre
- Open Library
- Totem Pole
- Pergolas & Sit-outs
- Senior Citizen Area
- 4+ Km Elevated Jogging Track with Palm Tree Lining on Either Side



SUPERIOR INTERNAL SPECIFICATIONS

SPECIAL HOME FEATURES

- Provision for Split AC in Living Room & Bedroom
- Touchpad Controls in Every Room (on request)

FLOORING

- Vitrified Flooring in Living Room and Bedroom
- Wooden Flooring in Master Bedroom (on request)

KITCHEN

- Granite Table Top
- Anti-skid Tile Floorings
- Standard Stainless Steel Sink
- Branded C.P. Spout

TOILETS

- Anti-skid Tile Floorings and up to Lintel Glazed Tiles on Walls
- Premium Luxury Fittings from Top Quality Sanitary Ware Brands
- Provision for Hot Water Geyser in all Attached Bathrooms
- Concealed Plumbing
- Exhaust Fan

DOORS & WINDOWS

- Flush Doors with Decorative Fittings
- Anodised Aluminium Sliding Windows

WALLS & PAINT

- Internal Walls with POP Finishing
- External Walls Painted with Good-quality Weather-proof Paints

ELECTRIFICATION

- Concealed Wiring with ample Plug Points
- Concealed Wiring with Branded Modular Switches

PLUMBING

- Concealed Plumbing in Kitchen and all Toilets
- Superior Quality C.P. Fittings of Reputed Make

EXPERIENCE LIFE IN
THE INDIA'S FIRST ENERGY HOMES



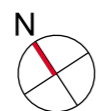
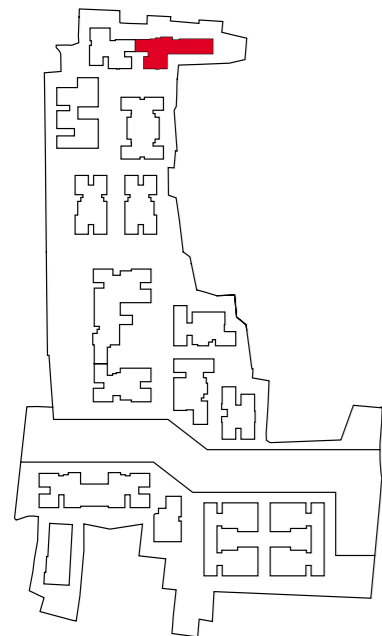
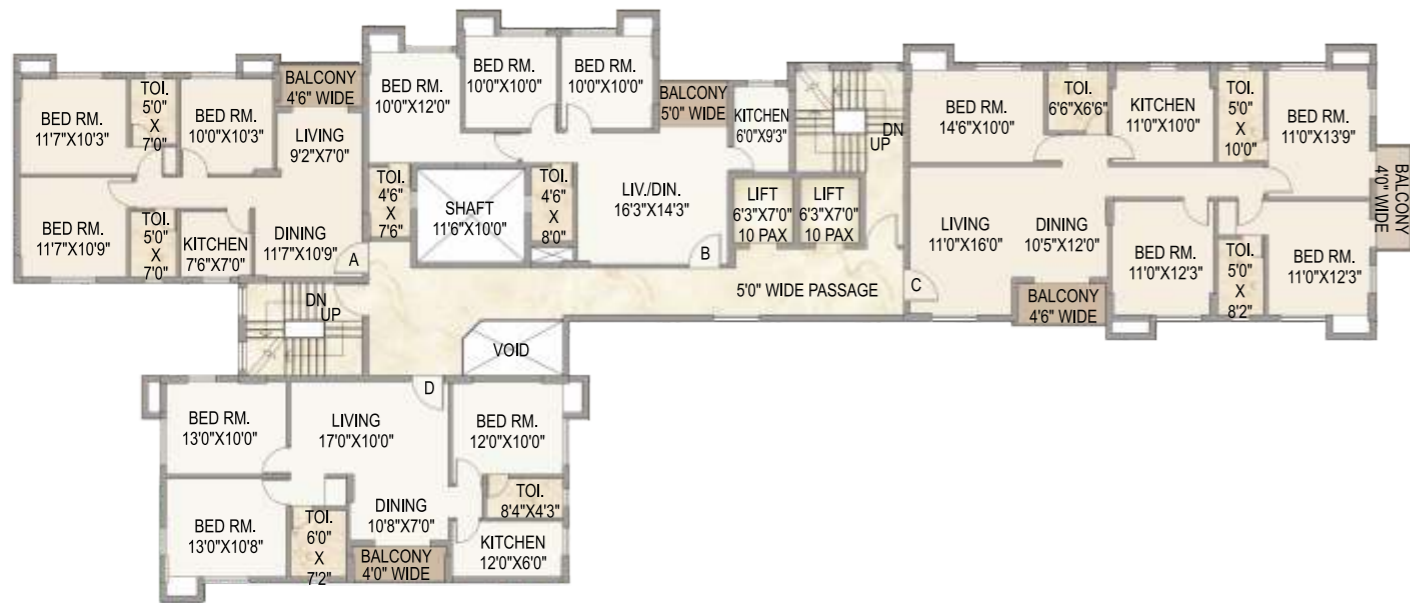
— THE —
PYRAMID
RAJARHAT, KOLKATA



Artist's Impression



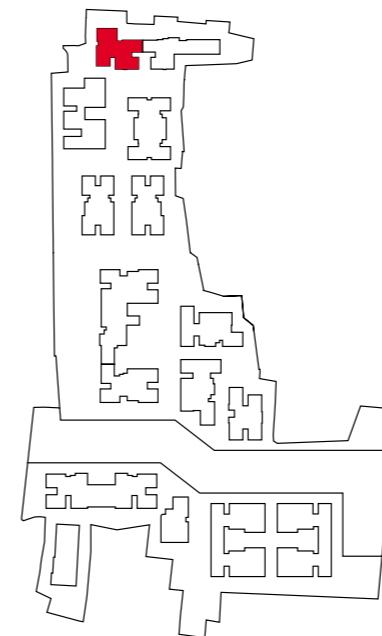
Typical Floor Plan - Plot - 6 (Block - 1)



BLOCK	FLAT TYPE	BHK	1st - 10th floor SALABLE AREA IN SQ. FT.
1	A	3 BHK	1,225
	B	3 BHK	1,254
	C	4 BHK	2,076
	D	3 BHK	1,403



Typical Floor Plan - Plot - 6 (Block - 2)



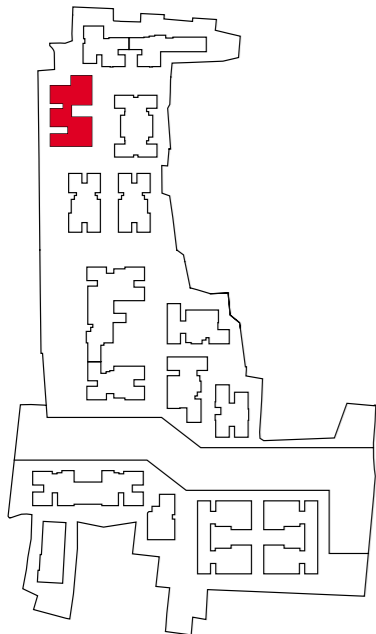
BLOCK	FLAT TYPE	BHK	1st - 10th floor SALABLE AREA IN SQ. FT.
2	A	3 BHK	1,367
	B	3 BHK	1,234
	C	3 BHK	1,403
	D	3 BHK	1,409



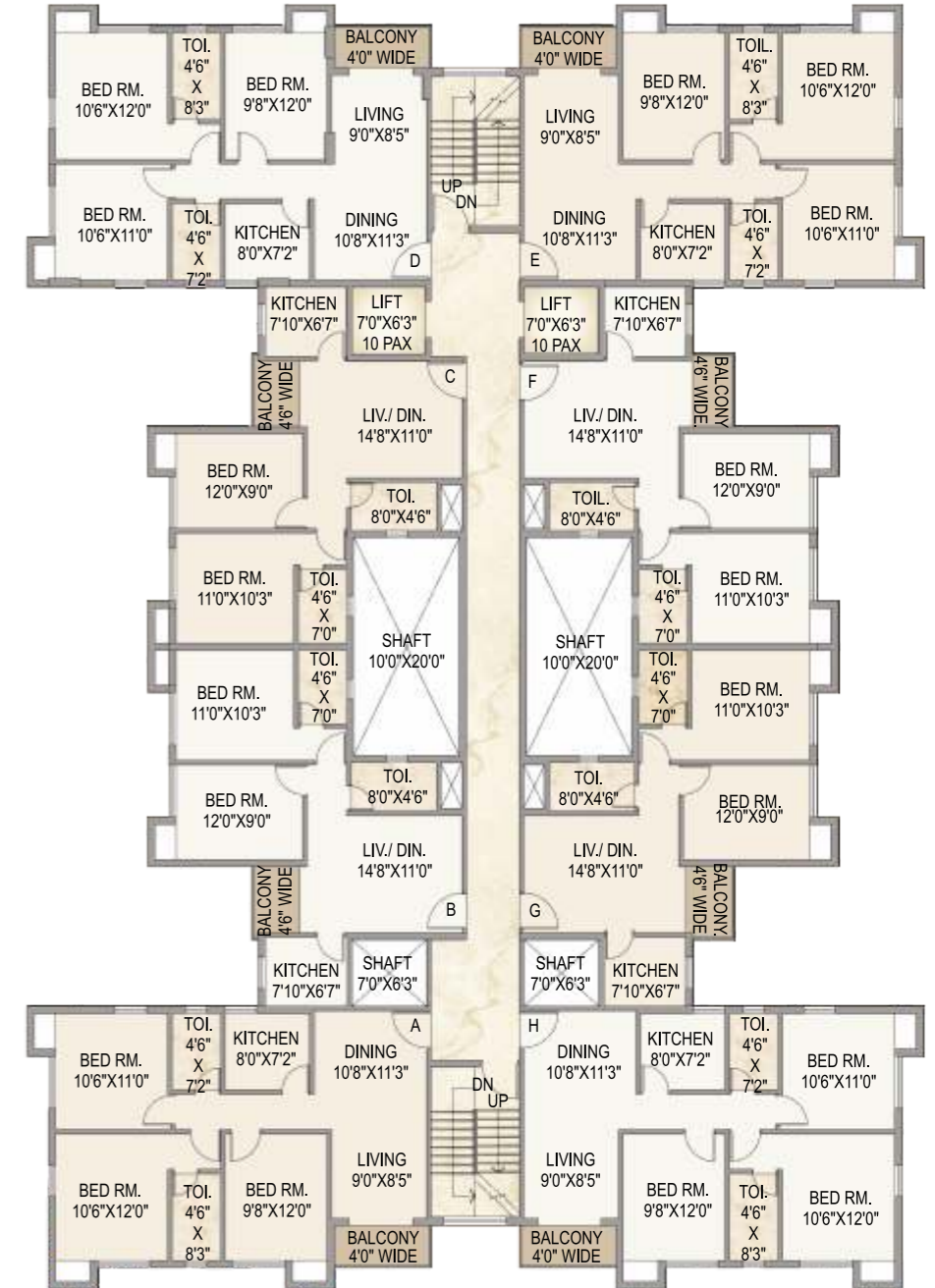
Typical Floor Plan - Plot - 6 (Block - 3)



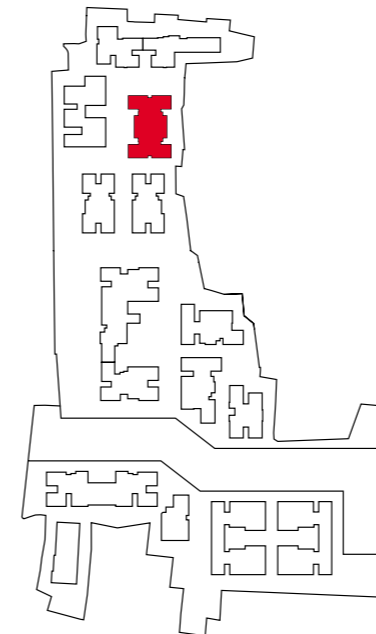
BLOCK	FLAT TYPE	BHK	1st - 10th floor SALABLE AREA IN SQ. FT.
3	A	3 BHK	1,207
	B	3 BHK	1,481
	C	3 BHK	1,481
	D	3 BHK	1,481
	E	3 BHK	1,470
	F	3 BHK	1,324
	G	3 BHK	1,207



Typical Floor Plan - Plot - 5 (Block - 4)

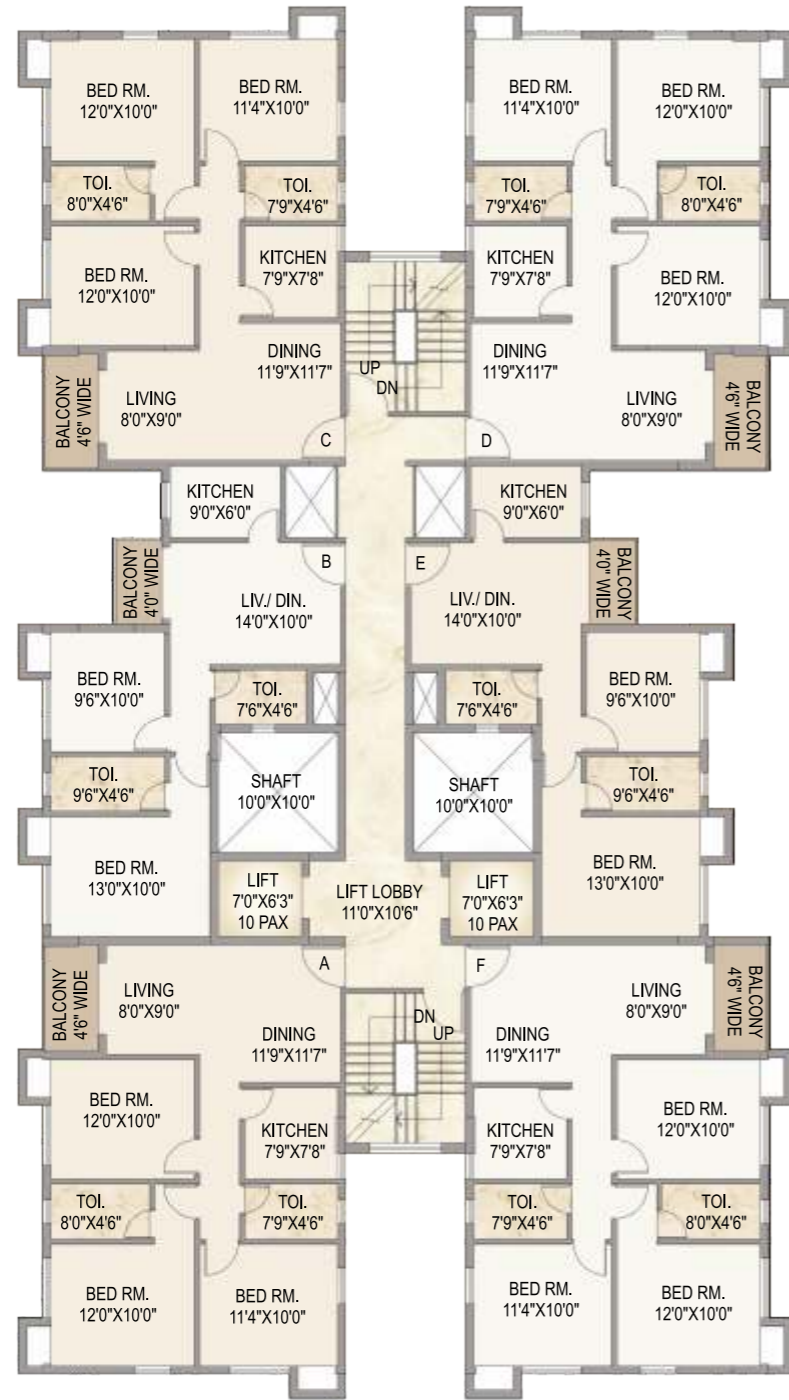


BLOCK	FLAT TYPE	BHK	1st floor SALABLE AREA IN SQ. FT.	2nd - 10th floor SALABLE AREA IN SQ. FT.
4	A	3 BHK	-	1,269
	B	2 BHK	-	938
	C	2 BHK	938	938
	D	3 BHK	938	1,269
	E	3 BHK	-	1,269
	F	2 BHK	1,269	939
	G	2 BHK	939	938
	H	3 BHK	938	1,269

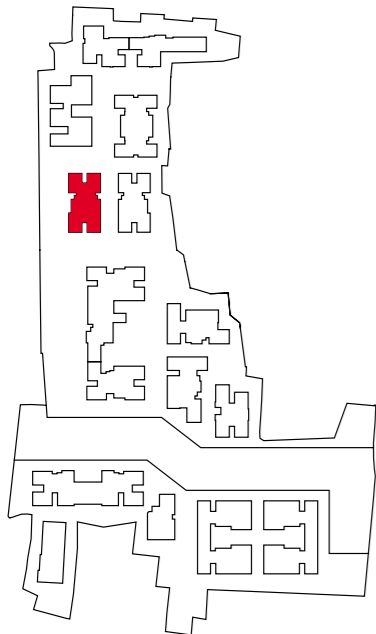




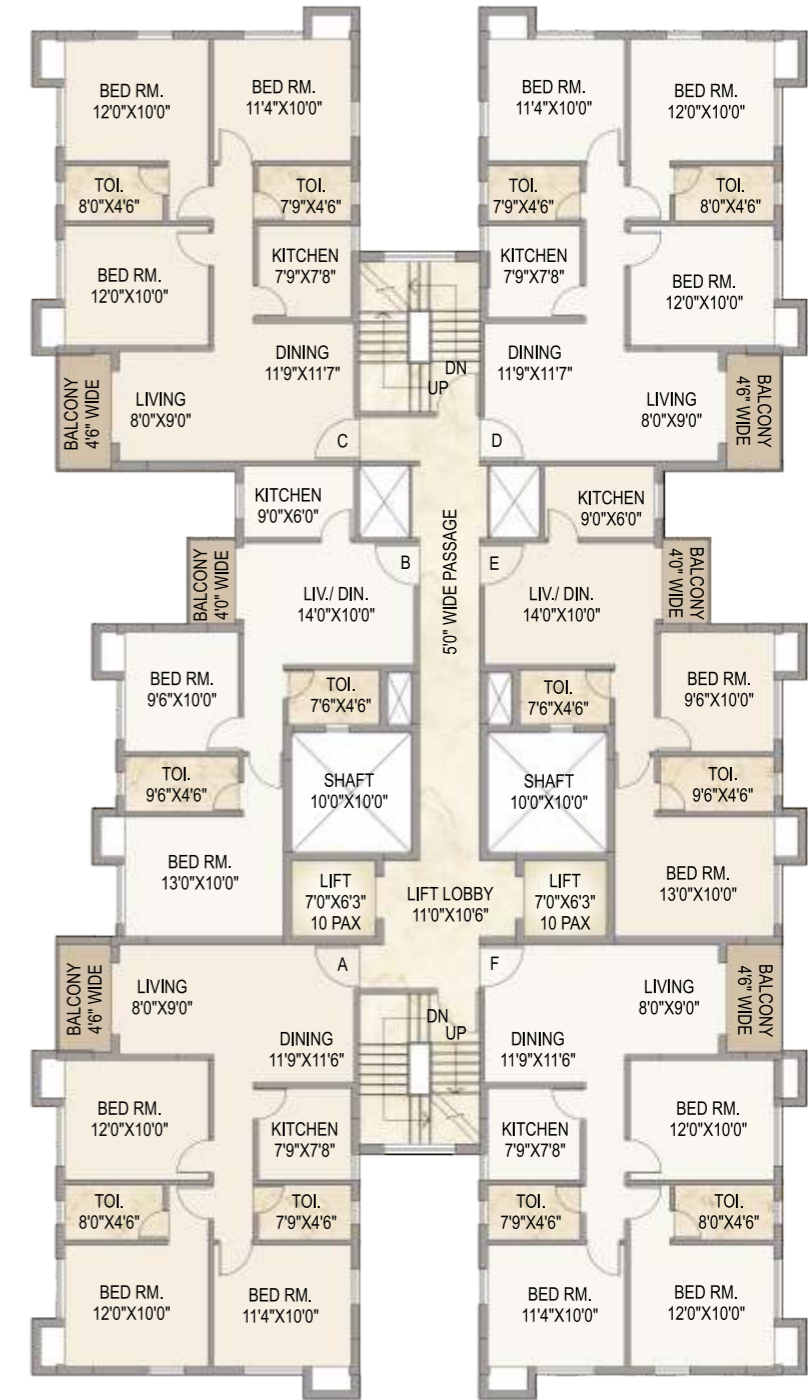
Typical Floor Plan - Plot - 5 (Block - 5)



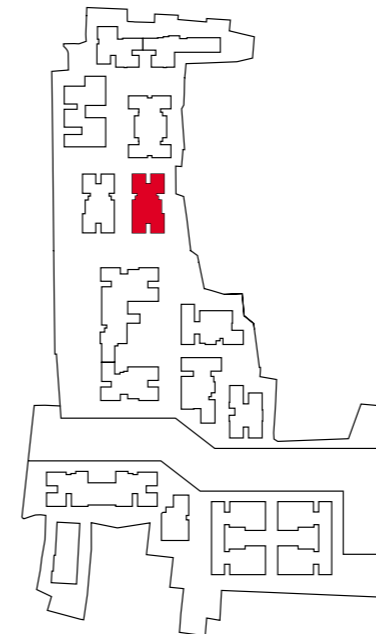
BLOCK	FLAT TYPE	BHK	1st floor SALABLE AREA IN SQ. FT.	2nd - 10th floor SALABLE AREA IN SQ. FT.
5	A	3 BHK	1,300	1,300
	B	2 BHK	949	949
	C	3 BHK	-	1,300
	D	3 BHK	-	1,303
	E	2 BHK	949	949
	F	3 BHK	1,300	1,300



Typical Floor Plan - Plot - 5 (Block - 6)

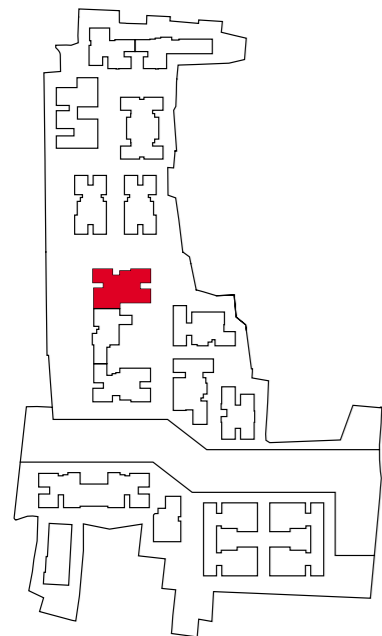


BLOCK	FLAT TYPE	BHK	1st floor SALABLE AREA IN SQ. FT.	2nd - 10th floor SALABLE AREA IN SQ. FT.
6	A	3 BHK	1,300	1,300
	B	2 BHK	949	949
	C	3 BHK	-	1,303
	D	3 BHK	-	1,300
	E	2 BHK	949	949
	F	3 BHK	1,300	1,300





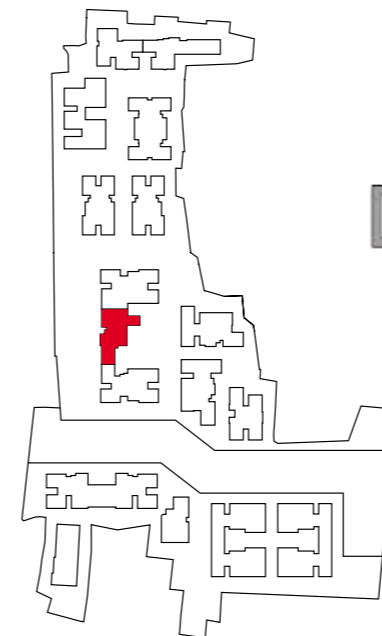
Typical Floor Plan - Plot - 4 (Block - 7)



BLOCK	FLAT TYPE	BHK	1st floor SALABLE AREA IN SQ. FT.	2nd - 10th floor SALABLE AREA IN SQ. FT.
7	A	3 BHK	1,357	1,357
	B	2 BHK	951	951
	C	3 BHK	1,352	1,352
	D	3 BHK	1,353	1,353
	E	2 BHK	954	954
	F	3 BHK	1,284	1,284



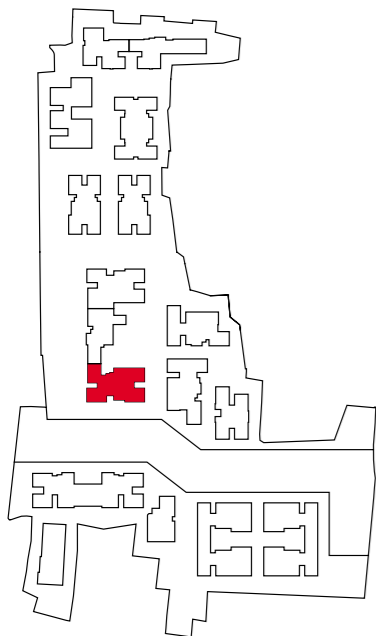
Typical Floor Plan - Plot - 4 (Block - 8)



BLOCK	FLAT TYPE	BHK	1st floor SALABLE AREA IN SQ. FT.	2nd - 10th floor SALABLE AREA IN SQ. FT.
8	A	3 BHK	1,277	1,277
	B	2 BHK	939	939
	C	3 BHK	1,279	1,279
	D	3 BHK	-	1,363
	E	3 BHK	-	1,363



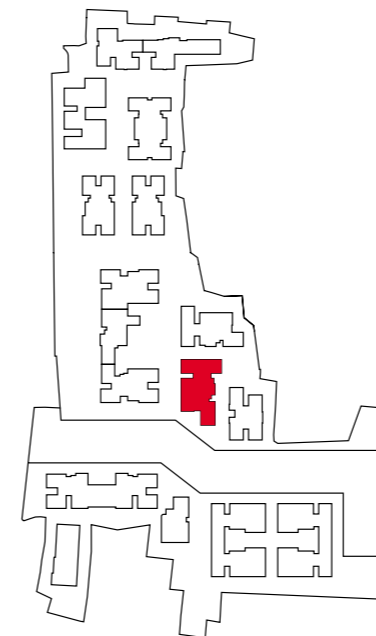
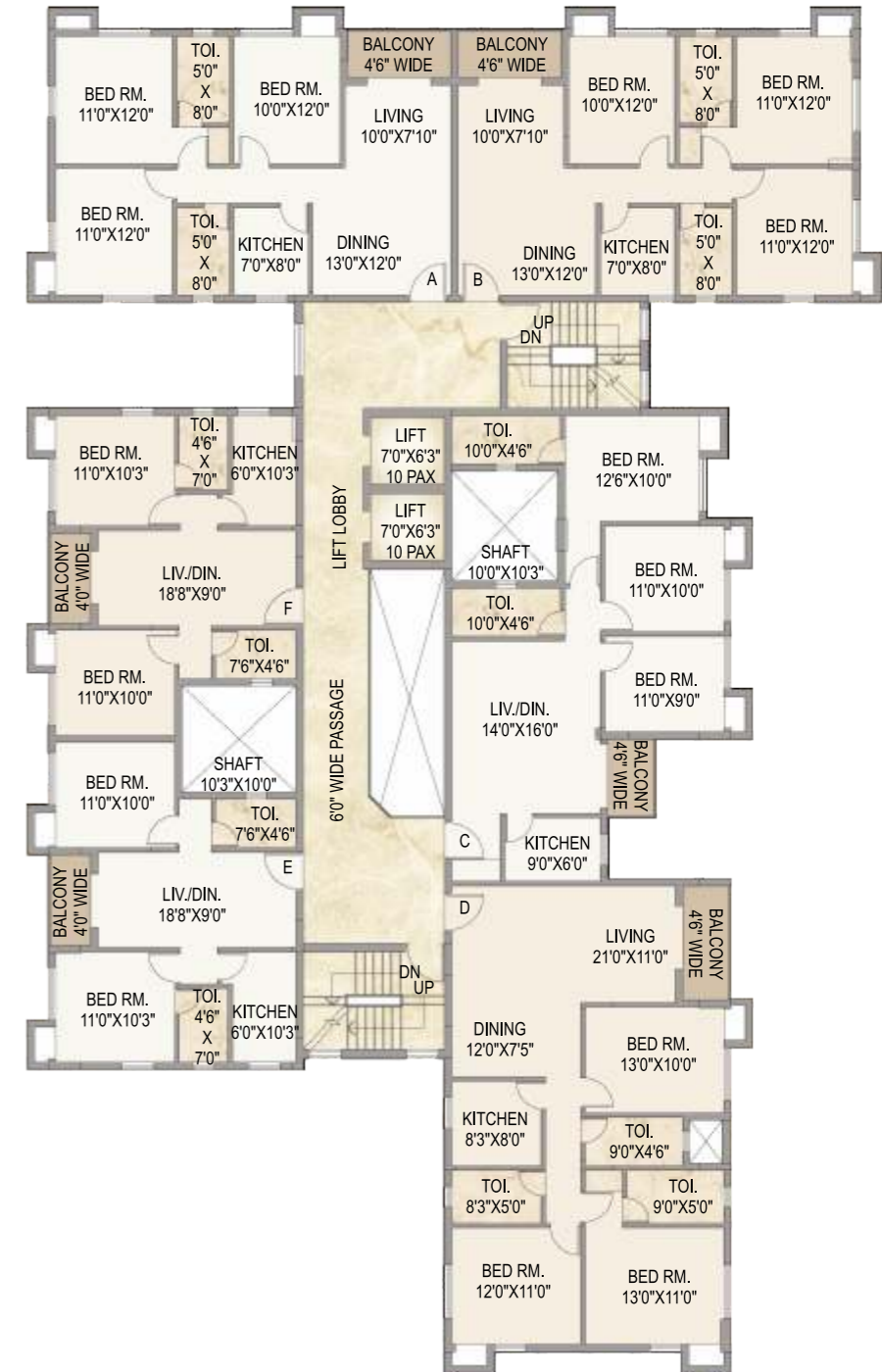
Typical Floor Plan - Plot - 4 (Block - 9)



BLOCK	FLAT TYPE	BHK	1st floor SALABLE AREA IN SQ. FT	2nd - 10th floor SALABLE AREA IN SQ. FT
9	A	3 BHK	1,284	1,284
	B	2 BHK	954	954
	C	3 BHK	1,353	1,353
	D	3 BHK	1,352	1,352
	E	2 BHK	951	951
	F	3 BHK	1,357	1,357



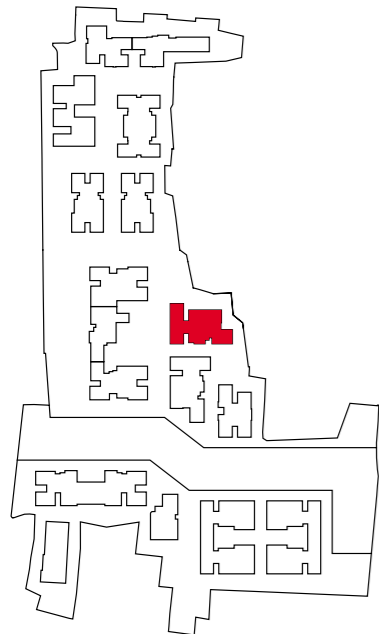
Typical Floor Plan - Plot - 3 (Block - 10)



BLOCK	FLAT TYPE	BHK	1st - 10th floor SALABLE AREA IN SQ. FT
10	A	3 BHK	1,393
	B	3 BHK	1,393
	C	3 BHK	1,345
	D	3 BHK	1,663
	E	2 BHK	976
	F	2 BHK	976



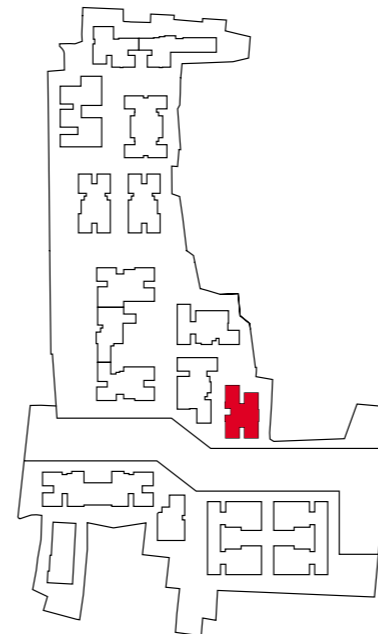
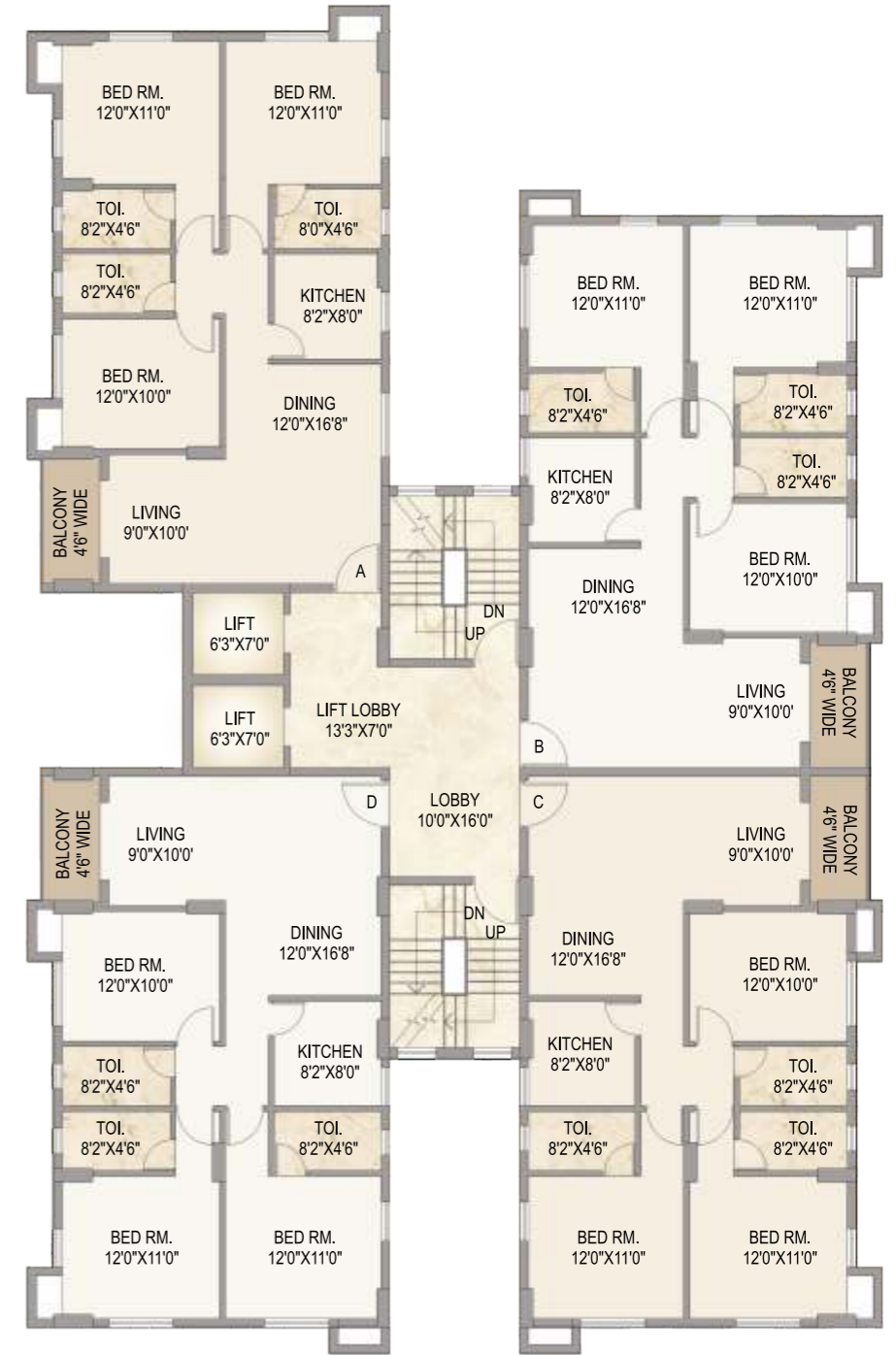
Typical Floor Plan - Plot - 3 (Block - 11)



BLOCK	FLAT TYPE	BHK	1st - 10th floor SALABLE AREA IN SQ. FT.
11	A	3 BHK	1,363
	B	3 BHK	1,363
	C	2 BHK	976
	D	2 BHK	976
	E	3 BHK	1,462
	F	3 BHK	1,345



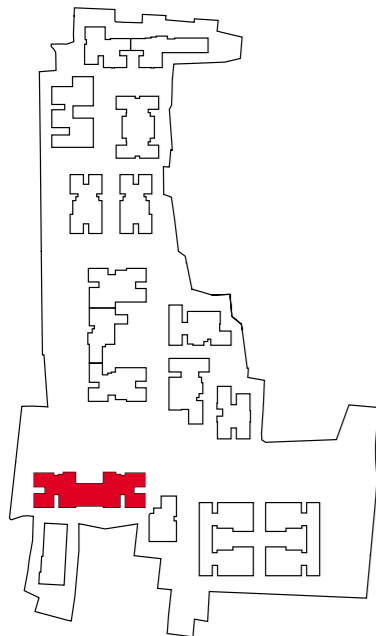
Typical Floor Plan - Plot - 3 (Block - 12)



BLOCK	FLAT TYPE	BHK	1st - 10th floor SALABLE AREA IN SQ. FT.
12	A	3 BHK	1,592
	B	3 BHK	1,579
	C	3 BHK	1,579
	D	3 BHK	1,592



Typical Floor Plan - Plot - 2 (Block - 13)



BLOCK	FLAT TYPE	BHK	1st - 10th floor SALABLE AREA IN SQ. FT.
13	A	3 BHK	1,536
	B	2 BHK	969
	C	3 BHK	1,370
	D	3 BHK	1,356
	E	3 BHK	1,301
	F	3 BHK	1,301
	G	3 BHK	1,356
	H	3 BHK	1,370
	I	2 BHK	969
	J	3 BHK	1,536

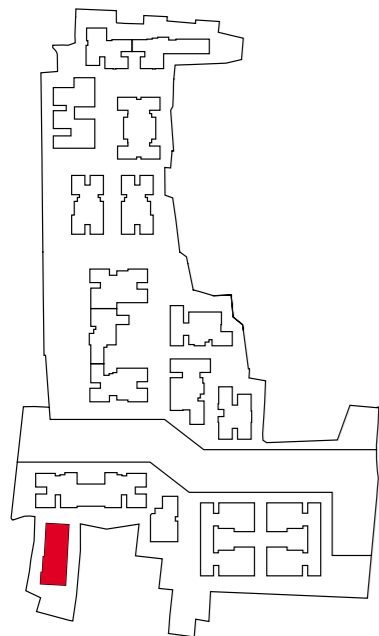




Typical Floor Plan - Plot - 2 (Block - 14)



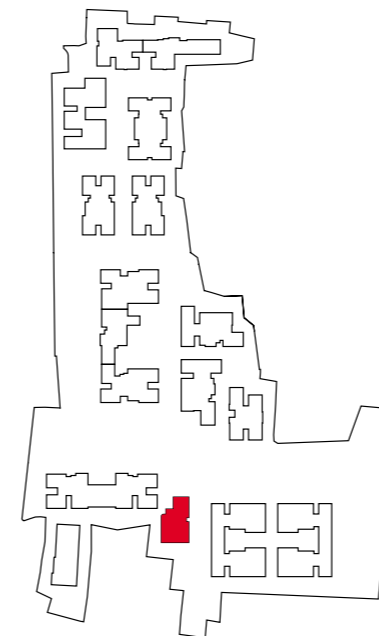
BLOCK	FLAT TYPE	BHK	1st - 10th floor SALABLE AREA IN SQ. FT.
14	A	4 BHK	7,035



Typical Floor Plan - Plot - 2 (Block - 15)

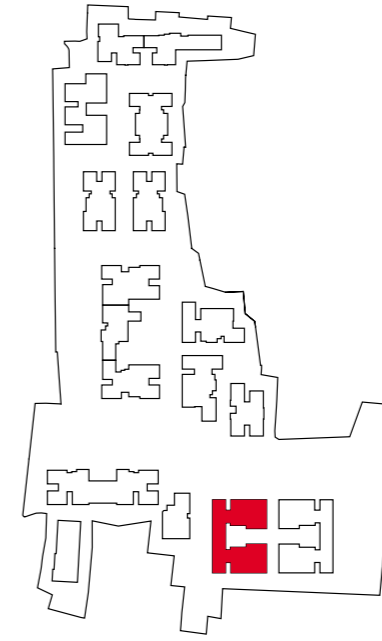
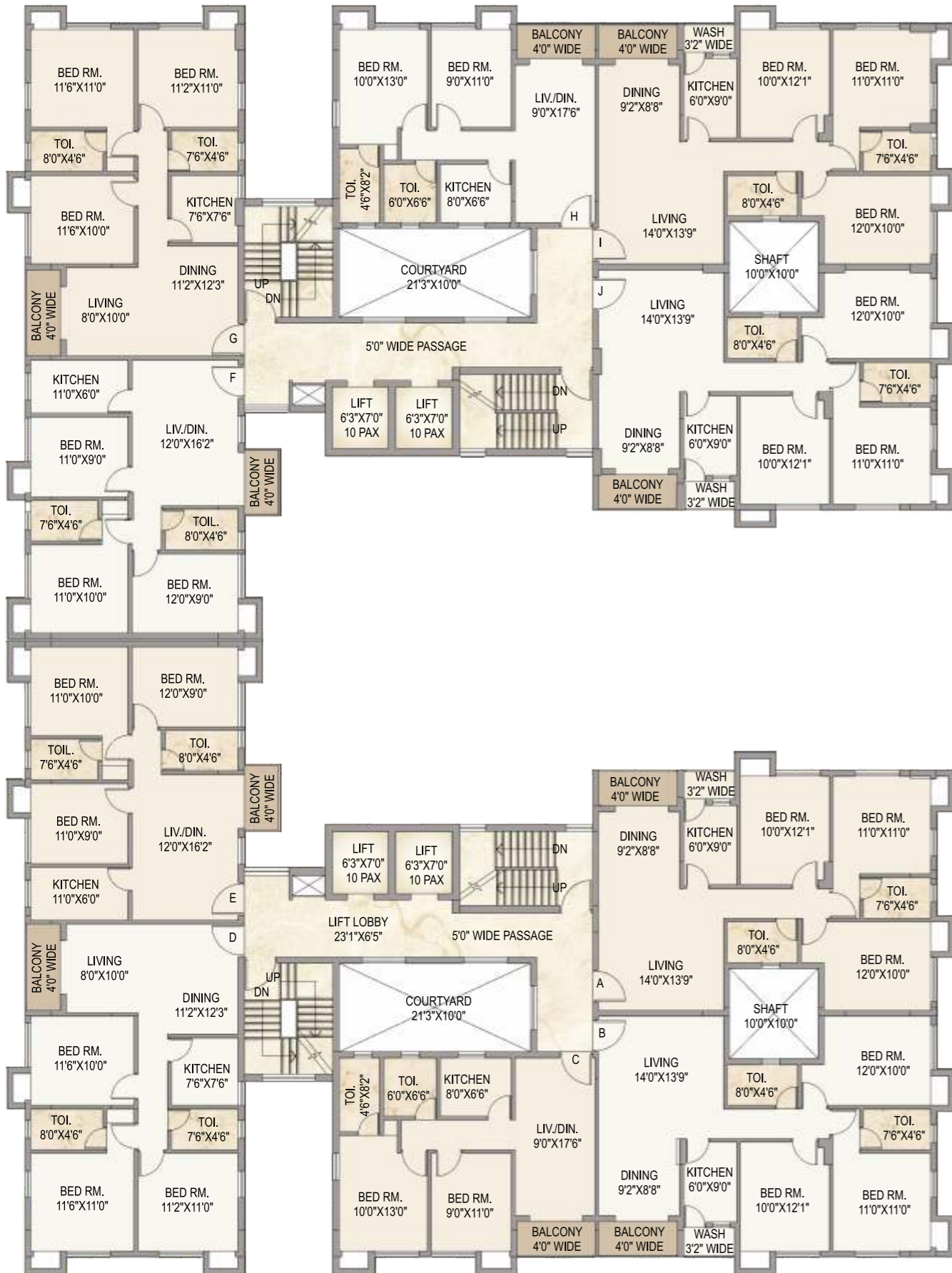


BLOCK	FLAT TYPE	BHK	1st - 10th floor SALABLE AREA IN SQ. FT.
15	A	3 BHK	1,597
	B	3 BHK	1,374
	C	3 BHK	1,374



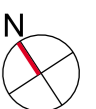


Typical Floor Plan - Plot - 1 (Block - 16)



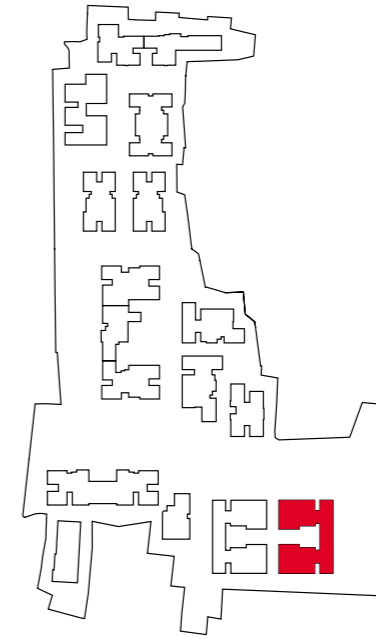
BLOCK	FLAT TYPE	BHK	1st floor SALABLE AREA IN SQ. FT.	2nd floor SALABLE AREA IN SQ. FT.	3rd - 10th floor SALABLE AREA IN SQ. FT.
16	A	3 BHK	-	1,430	1,430
	B	3 BHK	-	1,416	1,416
	C	2 BHK	969	969	969
	D	3 BHK	1,322	1,322	1,322
	E	3 BHK	1,159	1,159	1,159

BLOCK	FLAT TYPE	BHK	1st floor SALABLE AREA IN SQ. FT.	2nd floor SALABLE AREA IN SQ. FT.	3rd - 10th floor SALABLE AREA IN SQ. FT.
16	F	3 BHK	1,159	1,159	1,159
	G	3 BHK	1,322	1,322	1,322
	H	2 BHK	969	969	969
	I	3 BHK	-	1,416	1,416
	J	3 BHK	-	1,430	1,430





Typical Floor Plan - Plot - 1 (Block - 17)

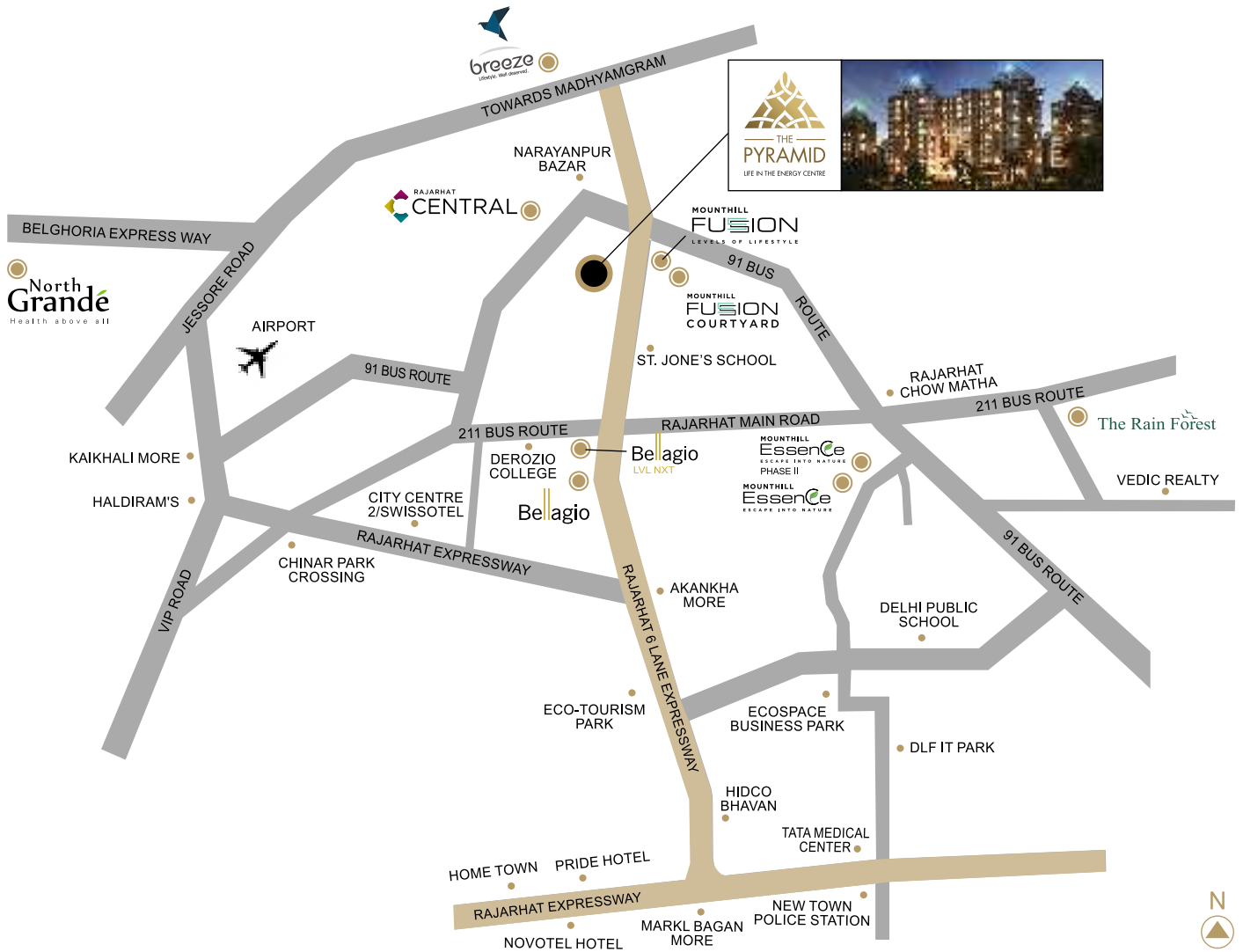


BLOCK	FLAT TYPE	BHK	1st floor SALABLE AREA IN SQ. FT.	2nd floor SALABLE AREA IN SQ. FT.	3rd - 10th floor SALABLE AREA IN SQ. FT.
17	A	3 BHK	-	1,430	1,430
	B	3 BHK	-	1,416	1,416
	C	2 BHK	969	969	969
	D	3 BHK	1,322	1,322	1,322
	E	3 BHK	1,159	1,159	1,159

BLOCK	FLAT TYPE	BHK	1st floor SALABLE AREA IN SQ. FT.	2nd floor SALABLE AREA IN SQ. FT.	3rd - 10th floor SALABLE AREA IN SQ. FT.
17	F	3 BHK	1,159	1,159	1,159
	G	3 BHK	1,322	1,322	1,322
	H	2 BHK	969	969	969
	I	3 BHK	-	-	1,416
	J	3 BHK	-	-	1,430



LOCATION MAP



LOCATION ADVANTAGES

- ✈ Airport – less than 10 mins
- 🎓 Derozio Memorial College – 2 mins
- 🏢 City Center II – 5 mins
- 🏫 DPS Megacity – 10 mins
- 🚇 Upcoming Metro Station – less than 5 mins
- 🏥 Tata Memorial Hospital – 10 mins

📞 99030 77777/4038 4038



E-mail: info@mounthillrealty.com | FOLLOW US ON [f](#) [in](#) [t](#)

Corporate Office: Mounthill Realty Pvt. Ltd., Next to Hyatt Regency, Between Gate No. 1 & 2, Salt Lake Stadium, Salt Lake City, Kolkata - 700 098

Disclaimer : All drawings, amenities, facilities, etc. shown in this leaflet are subject to change as per the approval from the respective authorities. The final discretion remains with the developers.