

THE 'S' LIFE



 PT. SUDIRMAN
PRASARANA



A **S**ignature space that defines who you are, a **S**pectacular lifestyle choice that says you have arrived, nestled in the **S**trategic location in the heart of the city with **S**erene, pristine and green environment near the **S**oothing Five Gardens is what we call the '**S**' life.

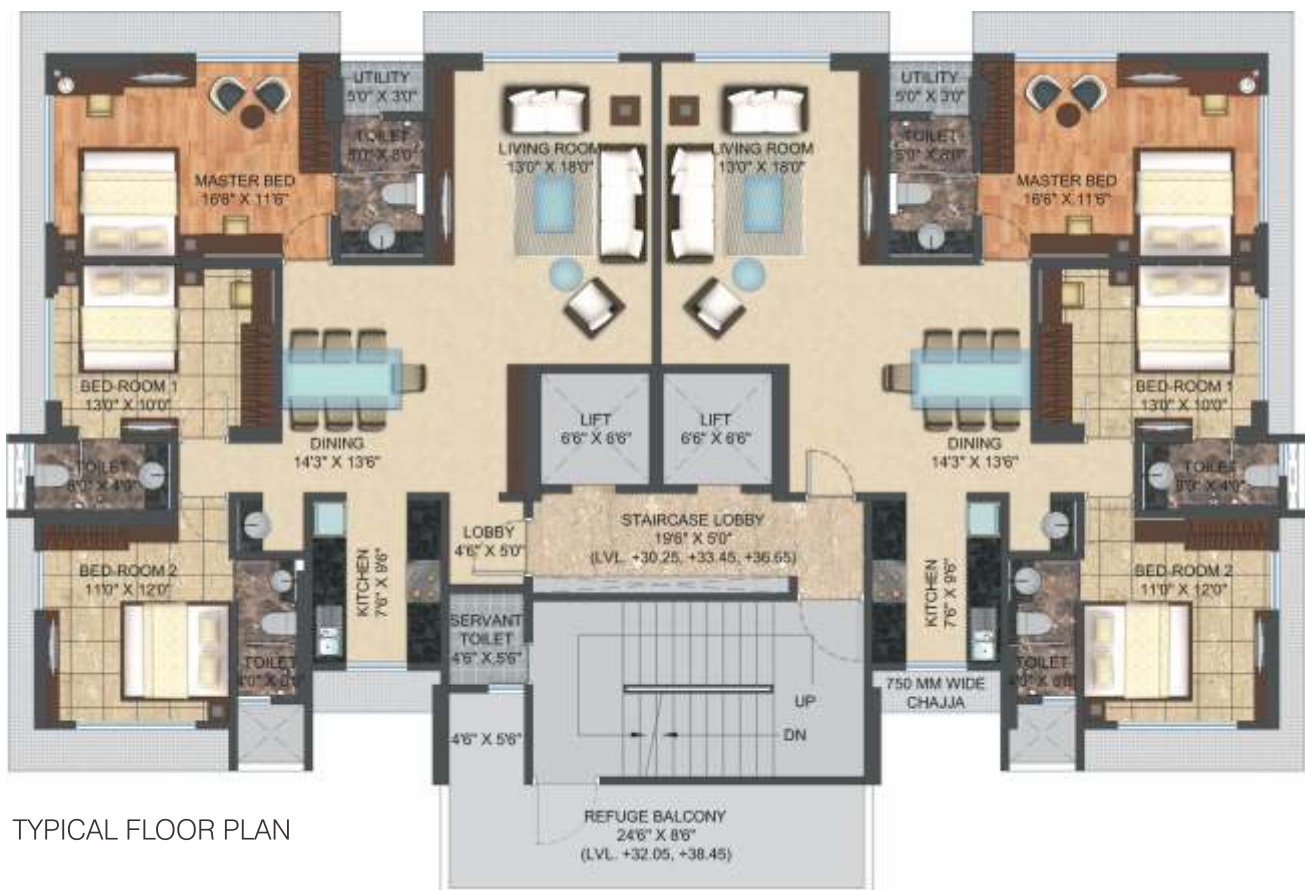
Discover the '**S**' life experience in its true form at Pashmina **S**erene. It will become a **S**ignature tower that will be a part of the ever glittering Mumbai **S**kyline. The **S**tunning 19 **S**torey luxury tower has **S**pacious apartments which have been designed with comfort, convenience and efficiency in mind.

Amongst its many features, the grand entrance lobby is an aesthetic masterpiece and welcomes you with sheer grandeur while the magnificent view from the apartments will leave you spell bound. At Pashmina **S**erene it is about luxury with genuine values.

The **S**erene life is the next experience in luxury living that awaits you. Take the next step and **S**cript a new **S**tory.

WELCOME TO PASHMINA SERENE.

signature 'S' pace



TYPICAL FLOOR PLAN



There is nothing more comforting than your very own personal space. With the 'S' life we give you nothing short of excellence. Every apartment is extremely spacious and well planned keeping your needs in mind. The magnificent view and the luxurious interiors will cocoon you in your new lifestyle choice.

- Only two apartments per floor giving you privacy & exclusivity (can be optionally made into one apartment)
- Customizable apartments with no intruding beams
- The Apartment is open from 3 sides ensuring:
 - Cross ventilation
 - Ample sunlight & breeze for a positive atmosphere
- Spacious rooms
- Servant's toilet on every mid-landing



TYPICAL FLOOR PLAN
Combine Unit Plan (optional)



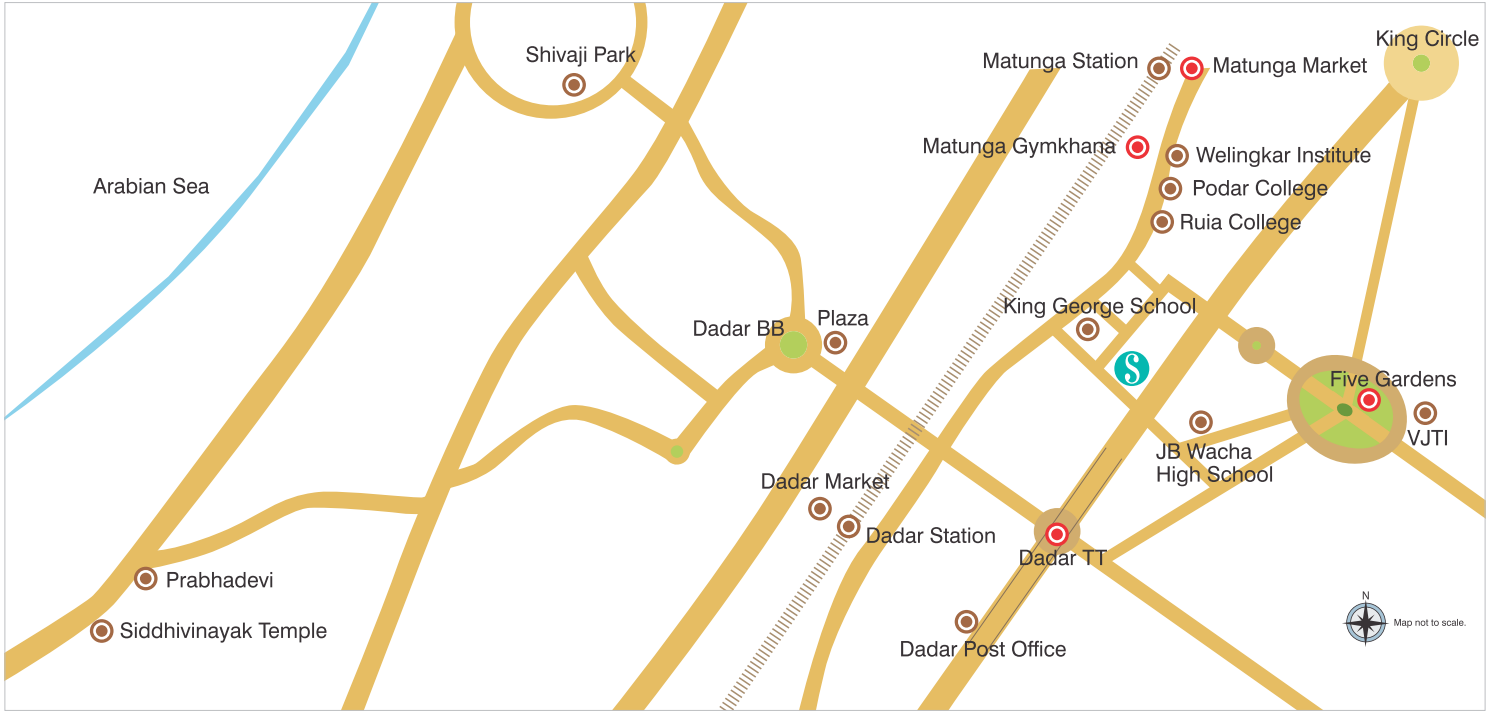
STRATEGIC 'S'ite

The city life, the city culture, the city lifestyle is experienced best when you are in the heart of Mumbai. Hindu Colony, Dadar is a prime location in the island city where one has every luxury, comfort and convenience just a stone's throw away. Even though Pashmina Serene is in close proximity to Mumbai's popular landmarks it maintains a sense of serenity which is a rare feature today. The 'S' life is an amalgamation of many aspects of everyday life, one of which demands that your address is a lifestyle culture in itself.

- Centrally Located
- Close to Dadar T T
- 5 min walk to Five Gardens
- Dadar & Matunga station - within 1 Km.
- Hospital & Clinics - within 1 Km. radius
- Proximity to Markets (Matunga & Dadar)
- Close to Dadar, Matunga and Parsi Gymkhanas
- Schools/Colleges/Management & Technical Institutes - within 1 Km. radius (JB Vachha, King George, Podar, Ruia, Welingkar, VJTI, UICT, Khalsa, SIWS, St. Josephs, Don Bosco and more)
- Banks & ATMs - within 1 Km. radius
- Proximity to Multiplexes
- Temples / Jain Derasar - within 1Km. radius



Actual Image of Five Gardens



STYLISH 'S' SCULPTURE

Living in a piece of art is now a reality. Pashmina Serene is an architectural delight with a stylish exterior and a grand lobby area. The innovative parking system is one of its kind and makes parking a joyful experience. The 'S' life experience will surround you with luxury and panache.

EXTERNAL AMENITIES :

- Automated Tower Parking
Swipe & park convenience at your doorstep. Just park your car in the elevator and swipe a designated parking card for the system to place your car in its spot. Swipe your card again and your car will arrive at the entrance of the elevator facing towards the exit.
- Grand Entrance Lobby
- Fitness Centre
- E-Homes (With Video Door Phones & Intercom)
- CCTV Surveillance
- Elevators of reputed brand
- Servants toilet on every mid-landing
- Rain-Water Harvesting
- Power Back-up system for common areas including lifts and car park
- Provision for piped gas

INTERNAL AMENITIES :

- Italian Marble in Living & Dining
- Wooden Flooring in Master Bedroom
- Vitrified Flooring in Bedroom & Kitchen
- Premium Bath Fittings
- Designer Tiles in Bathroom
- Provision for Cable TV/Dish Antenna connections
- Granite Platform with SS Sink in Kitchen
- Anodized Aluminium Powder Coated Windows





ABOUT PASHMINA



Pashmina - the famous Kashmiri wool known for its quality and class signifies the moving spirit behind Pashmina Realty. We conceive, build and deliver residential, commercial and retail real estate properties with a signature touch. Every apartment, row house, villa, commercial and retail properties of Pashmina carries a signature touch by combining unique design aesthetics with state-of- the-art construction techniques.

Corporate Social Responsibility

As responsible corporate citizen Pashmina Realty is committed to improving the socio-economic well being of the under-privileged besides developing residential, commercial, retail and infrastructural facilities. In pursuit of this commitment we have joined hands with "Habitat for Humanity" – an internationally reputed NGO that provides shelter for the needy in over 92 countries.





Pashmina Waterfront at Bangalore





Head Office - Mumbai:

Pashmina Builders & Developers Pvt. Ltd.

3rd Floor, Bengal Chemical Bldg, 502,
Veer Savarkar Marg, Prabhadevi, Mumbai - 400 025.

Tel:022 - 6616 6700 • Fax: 022 - 66166777

email : salesmumbai@pashminadevelopers.com

www.pashminadevelopers.com