



IMPERIA STRUCTURES :  
*turning dreams*  
INTO A STUNNING REALITY

The Imperia Group has been a part of the incredible transformation that changed the real estate landscape of Delhi NCR. Be it commercial, office, residential or retail, we have created archetypes of excellence in every space.

Building on a legacy spanning 30 years, the group has set new benchmarks in quality of delivery with over 23 projects delivered and almost 2 million sq. ft. of commercial space leased out to leading MNCs and Fortune 500 companies including Citibank, Reliance, Siemens, Diesel, Samsung, Larsen and Toubro, Voltas, Videocon, Blue Star and TCS, GE Money, Airtel, Snapdeal, Flipkart, Kotak Mahindra, Maharaja Whiteline, Max Bupa among many others.

But one thing that gives us real pride is the smile on the faces of our over 3000+ customers. A reward for our dedication to delivering the best. A reward that we cherish the most.



**Imperia Structures Ltd.**

A-25, Mohan Co-operative Industrial Estate, New Delhi-110044 | E: [response@imperiastructures.com](mailto:response@imperiastructures.com) | W: [www.imperiastructures.com](http://www.imperiastructures.com)

**Site Office :** Sector 37 C, Gurgaon-Dwarka Expressway | **Branch Offices :** Noida | Patna | Ranchi | Lucknow | Kanpur

\*Terms and conditions apply. All images are conceptual only and subject to change without prior notice. Valid from 18th August, 2015. Certain on-call and on-demand services may attract extra charges as per actual usage or under terms of the Maintenance Agreement.

## NEW LIVING SPACES FOR A NEW INDIA

IMPERIA PRESENTS  
PREMIUM EXECUTIVE APARTMENTS

37<sup>TH</sup> AVENUE

SECTOR 37C, GURGAON-DWARKA EXPRESSWAY

# 37<sup>TH</sup> AVENUE

SECTOR 37C, GURGAON-DWARKA EXPRESSWAY





37TH AVENUE

# *do it yourself*

APARTMENTS

WHERE YOUR LIFE SHOULD ALWAYS REFLECT YOUR STYLE

Welcome to 37th Avenue. Located at Sector 37 C, Gurgaon, this modern architecture is designed keeping in mind the needs of the young generation of today. Airy and spacious, these elegantly designed 2 and 3 room executive apartments come with premium finishes and specifications. The interior furnishings are left for you to style in your way – to reflect your individual taste. Alternately, you can opt for semi-furnished or fully-furnished apartments in two styles - premium & luxury.

- Grand Entrance Lobby
- Dedicated Parking
- 3-tier Security with Boom-barrier
- 24x7 Power Back-up
- Provision for Satellite TV and Internet-lines
- Child-safe Lifts





YOU BELIEVE IN HIGH PERFORMANCE,  
AND WE ARE  
*here to deliver*  
JUST AS MUCH

At Imperia, we understand the pulse of today's young generation. A generation that will not settle for anything less than 100%. And then demand some more. Which is why your apartment complex comes with added common services to ensure your life here is one of zero disruptions and absolute comfort.

- 📞 Concierge/Help Desk
- 🚖 Taxi-on-Call & Travel Desk
- 🏠 Housekeeping-on-Demand
- 👕 Laundromat Service
- 🍷 Catering & Florist Services
- 👶 Babysitting Services
- 📄 Automated Utility - Bill Payments
- 🔧 Plumber/Electrician
- ⚕️ Chemist with First-Aid Services
- 👨‍⚕️ Doctor-on-Call Service
- 👨‍🍳 Chef

\*Certain on-call and on-demand services may attract extra charges as per actual usage or under terms of the Maintenance Agreement.





WHERE EVERYTHING YOU WANT IS JUST

*a few steps away*

We are constantly on the lookout to make life more comfortable for you, and that means everything you need should be available within a close radius. Just step down to the retail plaza or walk a few steps to the club - everything is strategically placed within this complex, to make life that much simpler for you. We have ensured that everything that you need outside the apartment complex, is also well within your reach.

 Salon and Spa

 Multiplex

 Retail Plaza

 Café & Fine Dining

 Food & Grocery Mart

 ATM



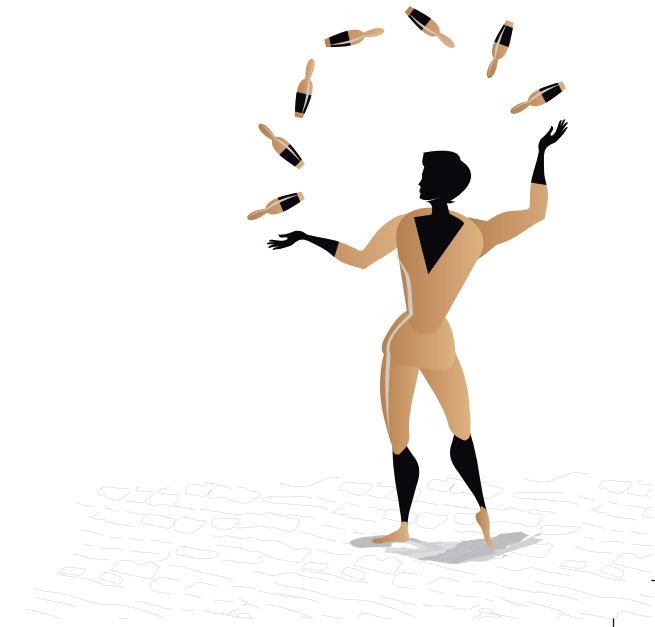


OUR SCHEDULE IS FOREVER PACKED WITH

*fun, play & leisure!*

If there is anything that keeps us going in today's world, it is passion. So, whether it is the workplace, or the playing field, you always have a zeal to do something new, or to keep getting better at what you do. At 37th Avenue, we have created an environment where your passions inadvertently find a place in your everyday schedule. The Club at 37th Avenue has a wide range of activities for you to choose from so that you enjoy every moment of life.

- Fitness Center, Jogging Track
- Badminton & Basketball
- Table Tennis & Snooker
- Air Hockey, Board Games, Darts
- Meditation & Yoga Centre
- Creche
- Kid Zone with Trampoline & Slides
- Privilege Club Membership
- Relax Lounge & Café
- Card Room
- Gym
- Spa & Jacuzzi
- Wi-Fi in Club
- Library





WE PREFER TO  
*stay connected,*  
 AND NOT JUST OVER FACEBOOK

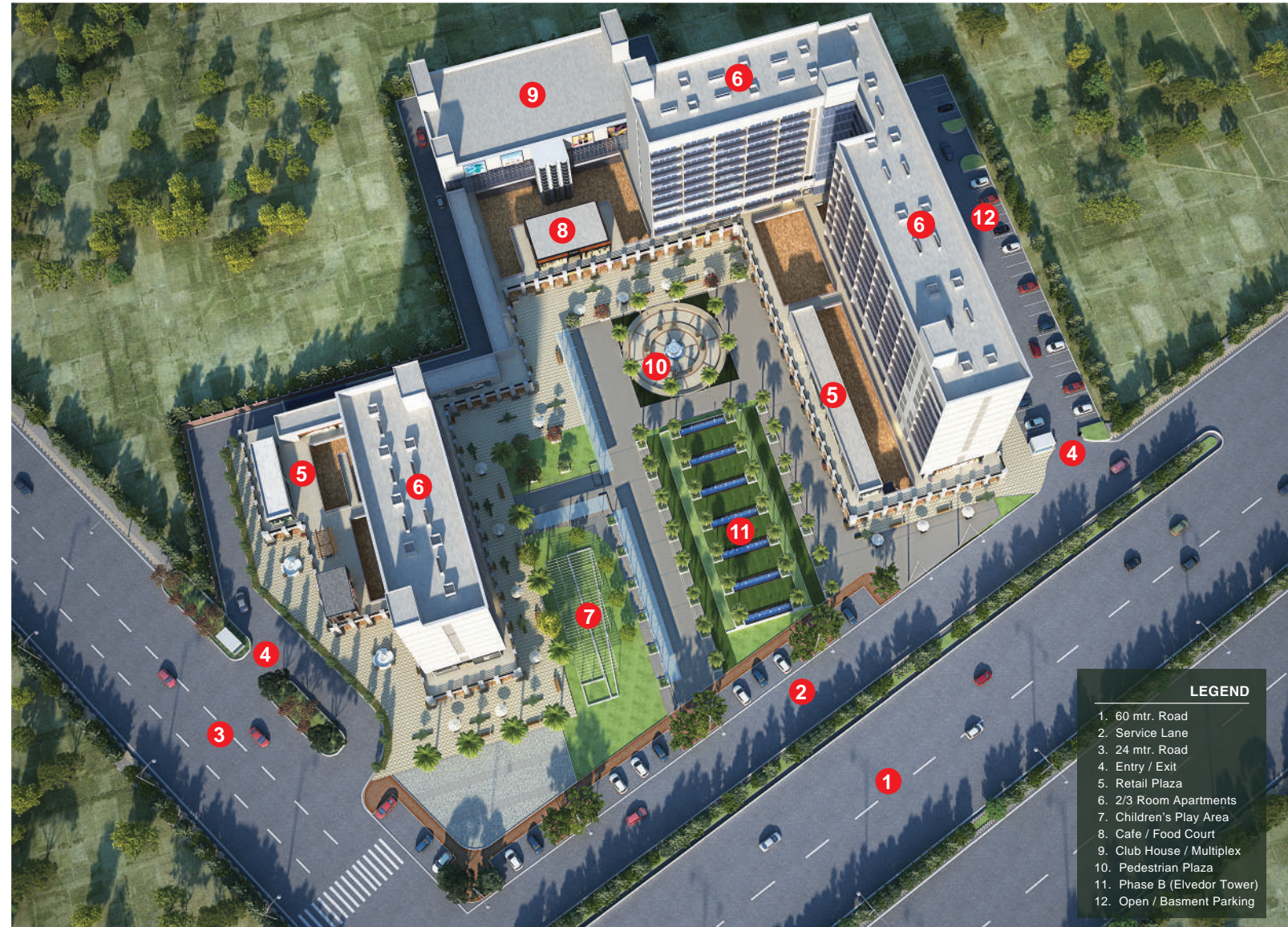
That early morning flight you need to catch. The weekend concert you have been waiting for. A pub-night with the colleagues. Or catching up with an old friend over dinner. There are plenty of reasons for all of us to go out. And what's better than a location from where you can reach anywhere, anytime.

Located in the heart of Gurgaon, Sector 37C, the complex is just 5 minutes away from NH8 and Dwarka Expressway - the fastest developing residential and commercial growth corridor of Gurgaon.

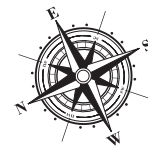
Moreover, being a short distance away from the upcoming Metro Corridor and just 20 minutes from IGI Airport, 37th Avenue gives you unmatched connectivity to all parts of NCR, and the world.

- Walking distance from proposed Metro station
- 10 minute drive from MG Road & CyberHub
- Within 15 minutes of world class hospitals
- In close proximity to IGI Airport
- Several international schools in the vicinity





37th Avenue Premium Executive Apartments are part of the complex known as ELVEDOR, situated at Sector 37 C, Gurgaon, Haryana.



WELL-PLANNED

*contemporary*

LIVING SPACES

600 SQ FT 1+1 ROOM SET  
FOR YOUNG COUPLES & BUSINESS TRAVELLERS



LEGEND

- 1. 10'-0" X 11'-0" Bed Room
- 2. 10'-0" X 12'-6" Sitting Room
- 3. 6'-4" X 6'-3" Kitchen
- 4. 5'-6" X 7'-6" Toilet
- 5. 4'-0" Wide Balcony

900 SQ FT 1+2 ROOM SET  
FOR SMALL FAMILIES



LEGEND

- 1. 10'-0" X 11'-0" Bed Room
- 2. 10'-0" X 11'-0" Bed Room
- 3. 10'-0" X 12'-6" Sitting Room
- 4. 6'-8.5" X 6'-8.5" Kitchen
- 5. 5'-6" X 7'-6" Toilet
- 6. 4'-0" Wide Balcony

