

Raj Nagar Extension NH-58, Ghaziabad

## Tower-17 (Studio Apartment)



**LEGEND**

- TYPE - 1 2BHK+2T (Carpet Area\* = 581 Sq.ft, 53.99 Sq.m)
- TYPE - 2 2BHK+2T (Carpet Area\* = 598 Sq.ft, 55.58 Sq.m)
- TYPE - 3 1BHK+1T (Carpet Area\* = 421 Sq.ft, 39.13 Sq.m)
- TYPE - 4 1BHK+1T (Carpet Area\* = 426 Sq.ft, 39.59 Sq.m)

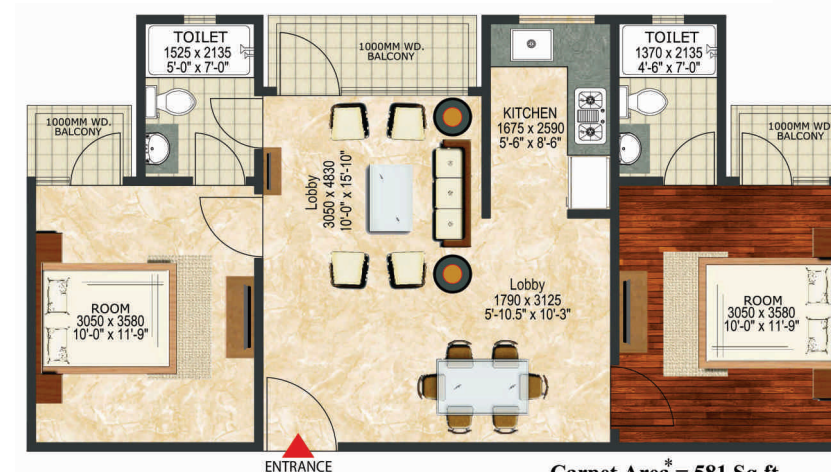
**2nd FLOOR PLAN  
(COMMERCIAL TOWER)**



**Carpet Area\* = 598 Sq.ft  
(55.58 Sq.m)**

**TYPE - 2 (2BHK + 2T)**

\* Carpet area as defined in THE REAL ESTATE (REGULATION AND DEVELOPMENT) ACT,2016



**TYPE - 1 (2BHK + 2T)**

**Carpet Area\* = 581 Sq.ft  
(53.99 Sq.m)**

\* Carpet area as defined in THE REAL ESTATE (REGULATION AND DEVELOPMENT) ACT,2016

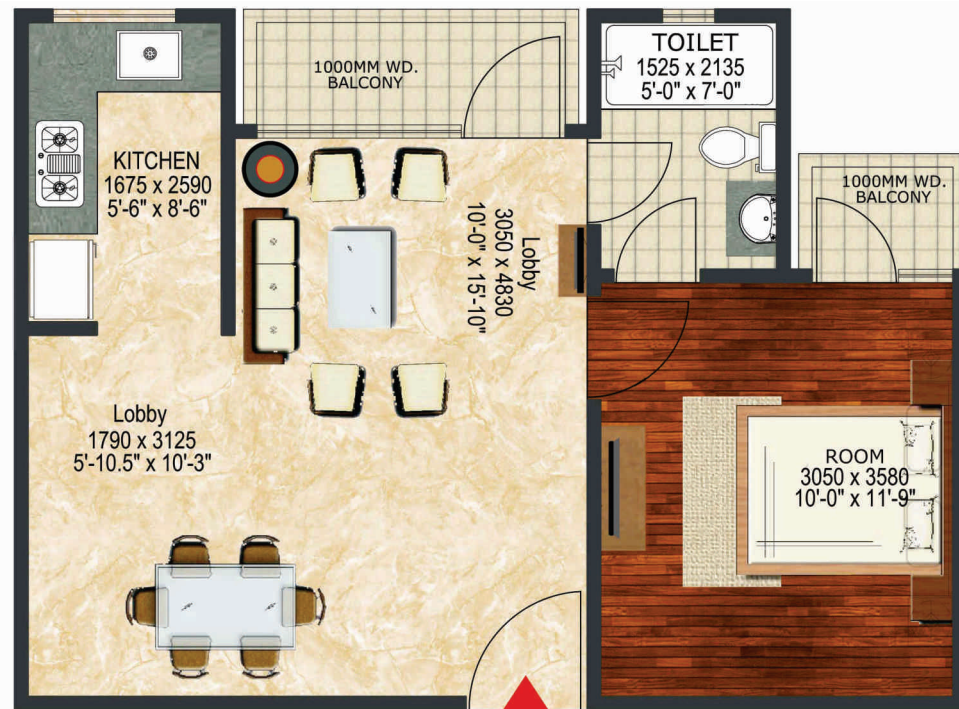
Disclaimer Note : Ground & 1st Floor Commercial

**Carpet Area\* = 421 Sq.ft.  
(39.13 Sq.m)**



**TYPE - 3 (1BHK + 1T)**

\* Carpet area as defined in THE REAL ESTATE (REGULATION AND DEVELOPMENT) ACT,2016



**Carpet Area\* = 426 Sq.ft.  
(39.59 Sq.m)**

**TYPE - 4 (1BHK + 1T)**

\* Carpet area as defined in THE REAL ESTATE (REGULATION AND DEVELOPMENT) ACT,2016