



Neoteric
GROUP

Enjoy new age living

THE
URBAN
LIFESTYLE
AWAITS
YOU





**Green
Park**
Gulmohar City



FEATURES

- 24 X 7 gated security
- Sculpture
- Jogging track
- State-of-the-art club with all facilities
- Landscaped greens
- Kids play zones
- Grocery store

PROJECT DETAILS

- Number of units: 144
- Elevation: Ground + 6
- Type: 1, 2 and 3 BHK apartments
- Size: 820 sq. ft. – 1500 sq. ft.

SPECIFICATIONS FOR ORCHID GREEN AND GREEN PARK

LOCATION AREA	FLOORING	FIXTURES & FITTINGS	WALLS	EXTERNAL DOORS & WINDOWS FITTINGS
Living Room Dining Room Bed Rooms with Flush Doors	Vitrified Tiles With Skirting	Modular Switches/ Sockets, Telephone, Cable T.V.	Oil Bound Distemper	Door Frame in Sal Wood/Assam Aluminium Two Track Glazed Windows
Toilets	Anti-Skid Tiles	Cera or Equivalent For Sanitary and Plumber or Equivalent for CP Fittings	Ceramic Tiles up to 7 ft. Height	
Kitchen	Vitrified Tiles with Skirting	Green Marble counter, Stainless Steel, Sink & CP fitting	Ceramic Tiles up to 2ft. Above Counter	
Balconies	Vitrified Tiles with Skirting	MS Railing	Paint/ Lime Wash	
Stair Case	Granite/ Vitrified Tiles	MS Railing		
Power Backup	100% Power Backup for all Common Areas			
External Façade	Semi – Texture Finish			

NEOTERIC GROUP - THE JOURNEY SO FAR

With a strong vision and aspiration of offering quality living, Neoteric Group started its journey as Neoteric Constructions Pvt. Ltd. in the year 1985. Founded by Shri. R.D. Gupta, a visionary by all means, the Group has successfully executed more than twenty commercial and residential projects in the last two decades. The Neoteric Group has been associated with changing the way people live in the state of Madhya Pradesh by constantly upgrading the standards of living.

The mission has always been to instill high quality and value for money in every project that has been undertaken. Providing only the best to our customers has been in our blood.





FEATURES

- 24 X 7 gated security
- Reception area
- State-of-the-art club with all facilities
- Landscaped greens
- Grocery store

PROJECT DETAILS

- Number of units: 72
- Elevation: Ground + 6
- Type: 1, 1.5 & 2 BHK Flats
- Size: 788 sq. ft. – 1166 sq. ft.

THE URBAN AMENITIES



SWIMMING POOL



GARDENS AND LANDSCAPING



JACUZZI



100% POWER BACK-UP FOR COMMON AREAS



MEDITATION, YOGA AND DANCE CENTER



STEAM BATH



SHOPPING CO



THE GROUP THAT WE ARE

We are a socially committed Group and it reflects in our work. Timely completions, environment conscious, adhering to strict quality, safety are just some of the benchmarks that we feel obliged to follow. We are associated with some of the best projects that have changed the skyline of Gwalior and we aim at continuing our relentless efforts to provide quality homes and lifestyle .

ON-GOING PROJECTS



NEOTERIC GROUP

Corp. Office: D-1 Silver Estate, University Road, Gwalior
Tel: +91 0751-4043133 Fax: +91 0751 4011736

Site Office: Ground Floor, Phoenix Club Building,
Near New Collectorate Building, Gwalior
Tel: +91 0751 3041050, 3041051

Call: 1800-3000-2660
www.neotericgroup.in



MASTER LAYOUT PLAN





**2 BHK SUPER AREA
1100 SQ. FT.**

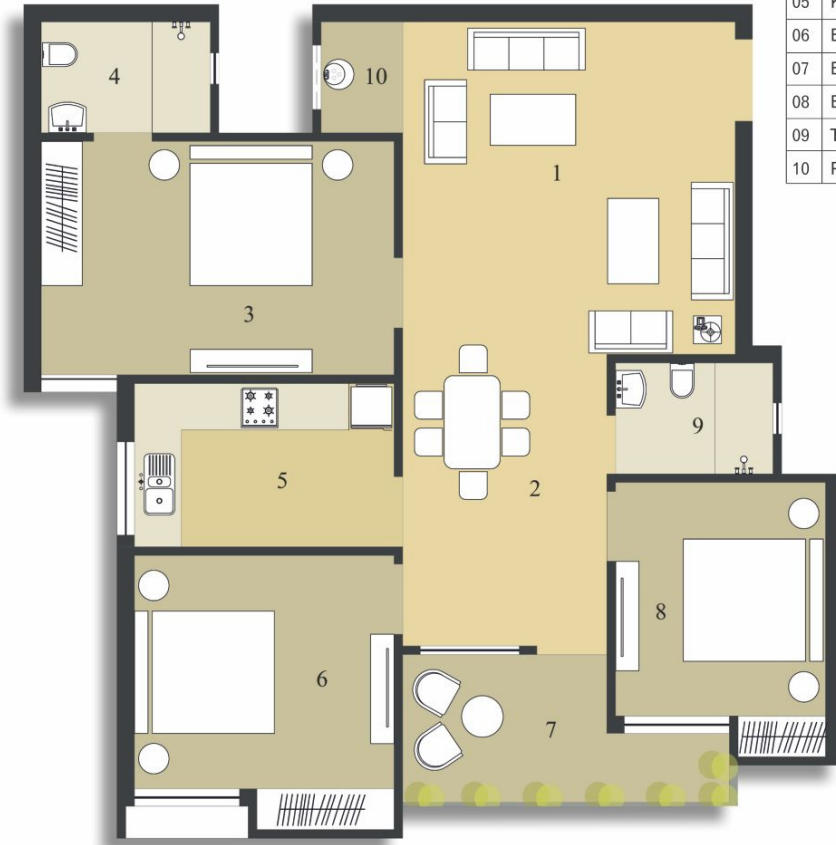
01	Drawing Room	10'1" x 15'1"
02	Dining Room	10' x 5'3"
03	Kitchen	6'6" x 10'
04	Balcony	8'6" x 5'
05	Bedroom	10'7" x 10'
06	Bedroom	14' x 10'
07&08	Toilet	7'3" x 4'9"





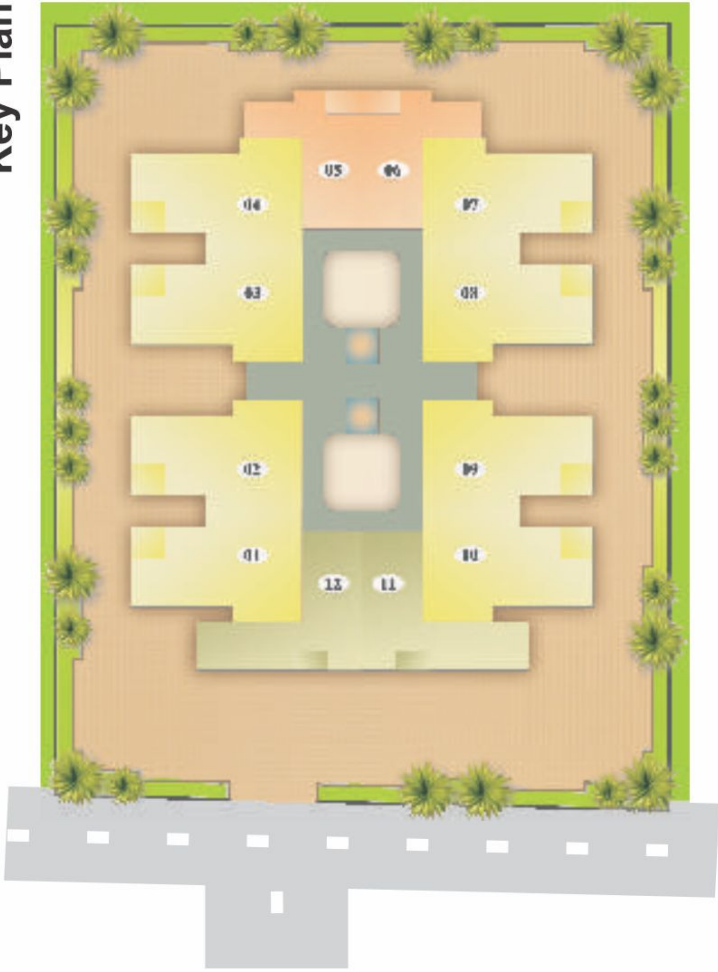
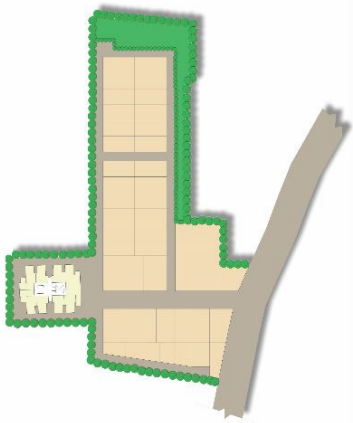
**3 BHK SUPER AREA
1390 SQ. FT.**

01	Drawing Room	14'3" x 14'3"
02	Dining Room	10' x 6"
03	Bedroom	15' x 10'
04	Toilet	7'3" x 4'9"
05	Kitchen	11' x 7'
06	Bedroom	11' x 10'
07	Balcony	8'9" x 6'6"
08	Bedroom	9' x 10'
09	Toilet	6'9" x 4'9"
10	Puja	3'6" x 4'9"





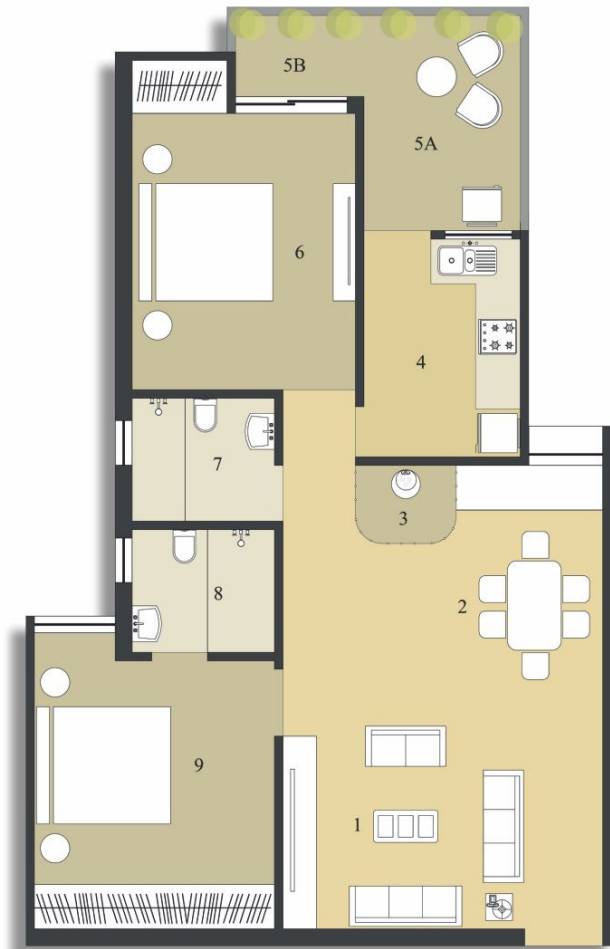
Key Plan

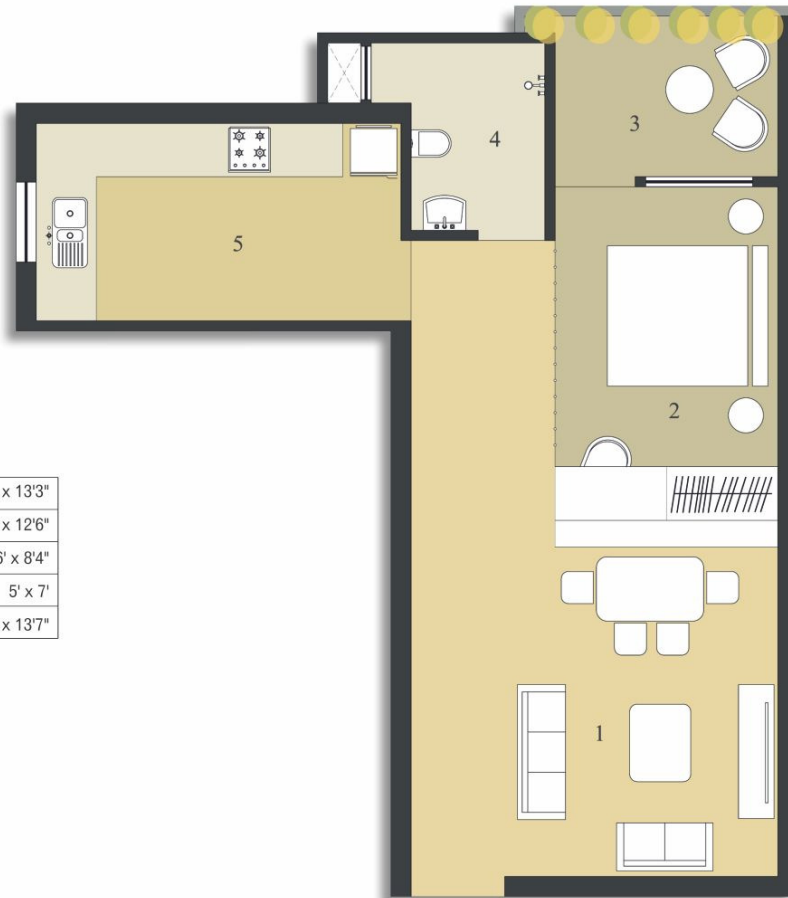




2 BHK SUPER AREA
1166 SQ. FT.

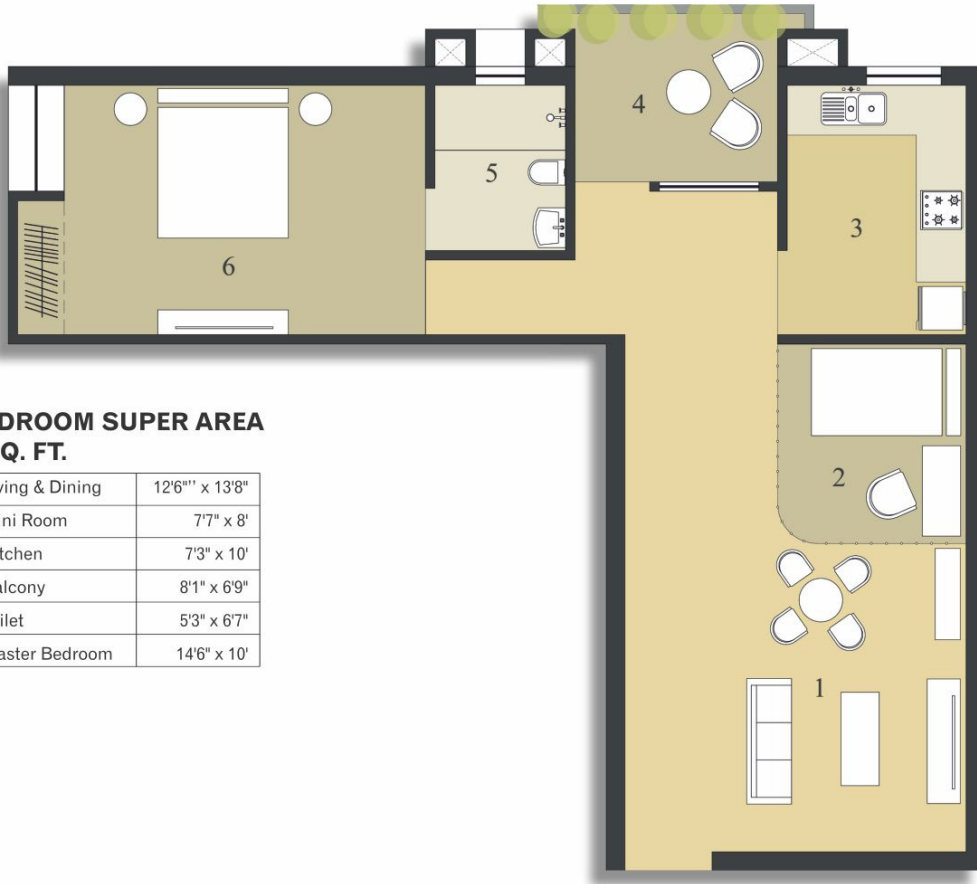
01	Drawing Room	14'3" x 8'7"
02	Dining Area	8' x 12'1"
03	Puja Area	4'6" x 3'6"
04	Kitchen	7' x 10'6"
05 A	Balcony	7' x 9'7"
05 B	Mini Balcony	5'9" x 3'7"
06	Master Bedroom	12'10" x 10'
07	Toilet	6'4" x 5'6"
08	Toilet	6'4" x 5'6"
09	Bedroom	12' x 10'9"





**1 BHK SUPER AREA
788 SQ. FT.**

01	Living & Dining	13'8" x 13'3"
02	Room	8'4" x 12'6"
03	Balcony	6' x 8'4"
04	Toilet	5' x 7'
05	Kitchen	7'4" x 13'7"



**1.5 BEDROOM SUPER AREA
1000 SQ. FT.**

01	Living & Dining	12'6" x 13'8"
02	Mini Room	7'7" x 8'
03	Kitchen	7'3" x 10'
04	Balcony	8'1" x 6'9"
05	Toilet	5'3" x 6'7"
06	Master Bedroom	14'6" x 10'