



PHASE II

2, 3 & 4 RLK HOMES AT WAKAD



Representative Image

## LIVE FULL *of* LIFE

Hectic routines, cluttered neighbourhood and chaotic living...

You don't work hard to get these things in return. But then, the fact is that life around you looks exactly like this. So, what do you do?

Well, all you need to do is make a choice.

A choice where you gift your family the joy of a warm neighbourhood, you gift your routine the luxury of relaxation, and you gift yourself a life full of life.

Go ahead; make this choice for yourself.



Welcome to Park Ivory Phase II,  
the choice you gift yourself,  
when you decide to live full of life.

Located at Wakad, this is an address  
cocooned within the 70-acre lifestyle hub  
of Park Street – the most loved  
neighbourhood of Wakad.

What's more, Park Ivory Phase I is home  
to loving families who are ready to  
welcome new neighbours and friends.

## **COME HOME TO A LIVELY NEXT-DOOR COMMUNITY**

- 3 Residential towers
- 2, 3 and 4 RLK configurations
- More spacious homes
- Dedicated set of ready-to-use amenities
- Upgraded indoor specifications



# park *ivory*

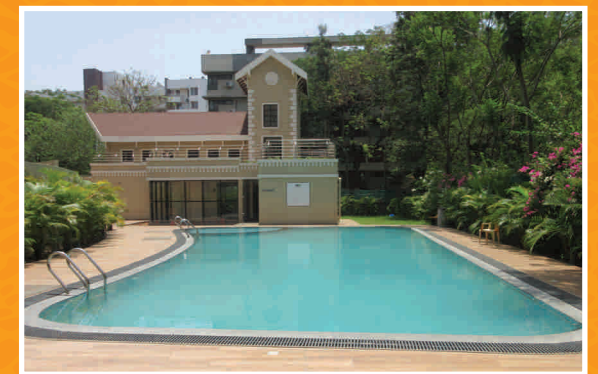
## AMENITIES FULL *of* LIFE

- 1 Multipurpose Court
- 2 Clubhouse
- 3 Swimming Pool
- 4 Children's Play Area
- 5 Amphitheatre
- 6 Landscaped Garden
- 7 Multipurpose Hall
- 8 Play Area

Project Layout Rendered View



AMENITIES  
FULL *of* LIFE



Actual image of Swimming Pool & Play Area



Representative Image

## SPECIFICATIONS FULL *of* LIFE

The indoors take care of the quality of life being offered at Park Ivory Phase II. They make sure that the overall indoor living experience lives true to the project promise – full of life!

### KITCHEN

- Ebco/ Hettich /Hafele make hardware
- Jyoti / Elica / Hafele / Faber make hob and chimney
- MDF Kitchen / Plywood cabinet below (780-840 mm height) and above (590-650 mm height) kitchen platform

### TOILET

- Roca / Hindware / Toto / Kohler make sanitary ware in all toilets
- Jaquar/ Schell / Kohler / Grohe bathroom fitting in all toilets
- 2' x 2' Calcium silicate grid false ceiling in all toilets
- Prince / Astral / Geberit make drainage plumbing system

### FLOORING AND TILING

- Zealtop / Nitco / Somany make 800 mm x 800 mm vitrified tiles
- Somany / Nitco / Kajaria make tiles in all toilets
- Somany / Nitco / Kajaria make anti-skid tiles in terrace and dry balcony

### ELECTRICAL

- Havells / Schneider / Legrand make electrical switches in all rooms
- Provision for air conditioner in all bedrooms
- Provision for inverter

### WINDOWS

- Aluminum powder coated / anodised windows with mosquito net in all rooms excluding toilets
- Aluminum windows with exhaust fan in all toilets

### DOORS & DOOR FITTINGS

- Dorma / Dorset / Hafele / Hettich make door fittings

### PAINTING

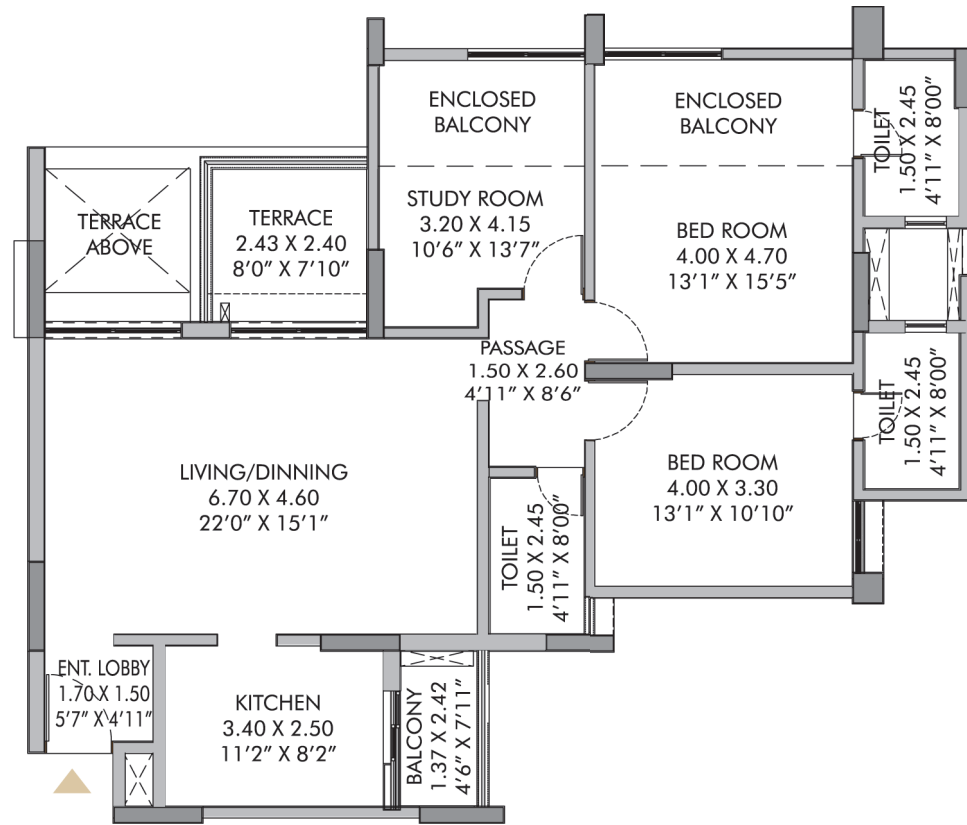
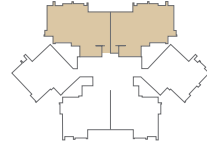
- New world / Asian / Dulux make emulsion paint for internal walls
- New world / Asian / Dulux make acrylic paint for external walls

### SECURITY

- Safe House / Wipro/ Zicom make 7" colour screen video door phone in each flat

# 'F' BUILDING

3 ROOM LIVING KITCHEN

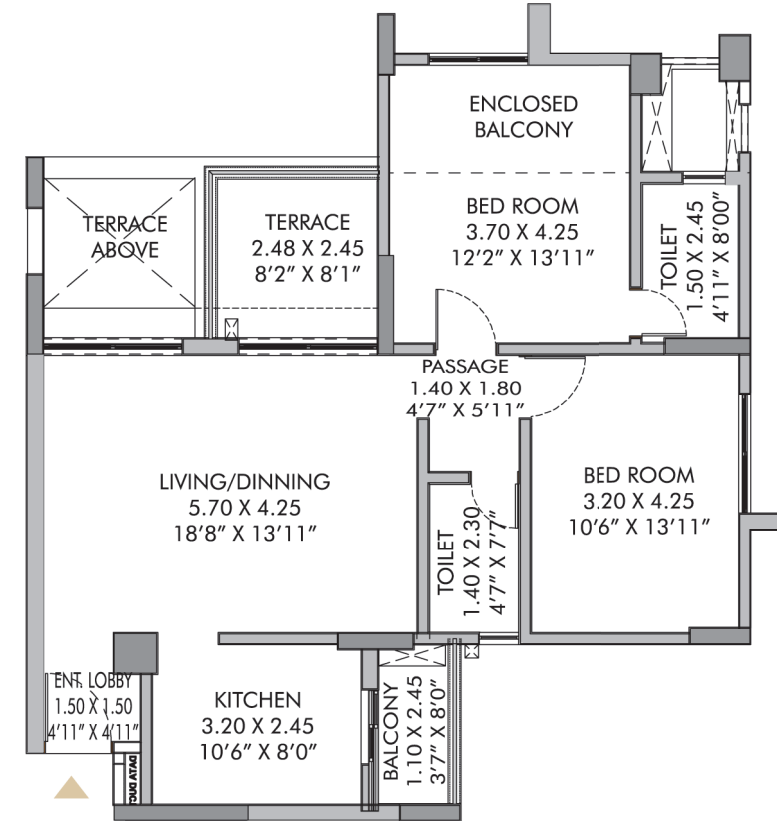
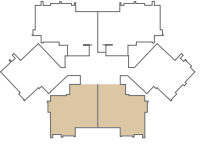


UNIT	FLAT TYPE	CARPET	TERRACE	ENCLOSED BALCONIES	DRY BALCONY
SQ. M.	3 RLK	96.12	5.54	12.25	2.52
SQ. FT.	3 RLK	1034.64	59.63	131.86	27.13

The internal dimensions mentioned in the plan include the thickness of plaster.  
The area in sq. ft. has been mentioned just for the convenience of customer for better understanding.

# 'F' BUILDING

2 ROOM LIVING KITCHEN

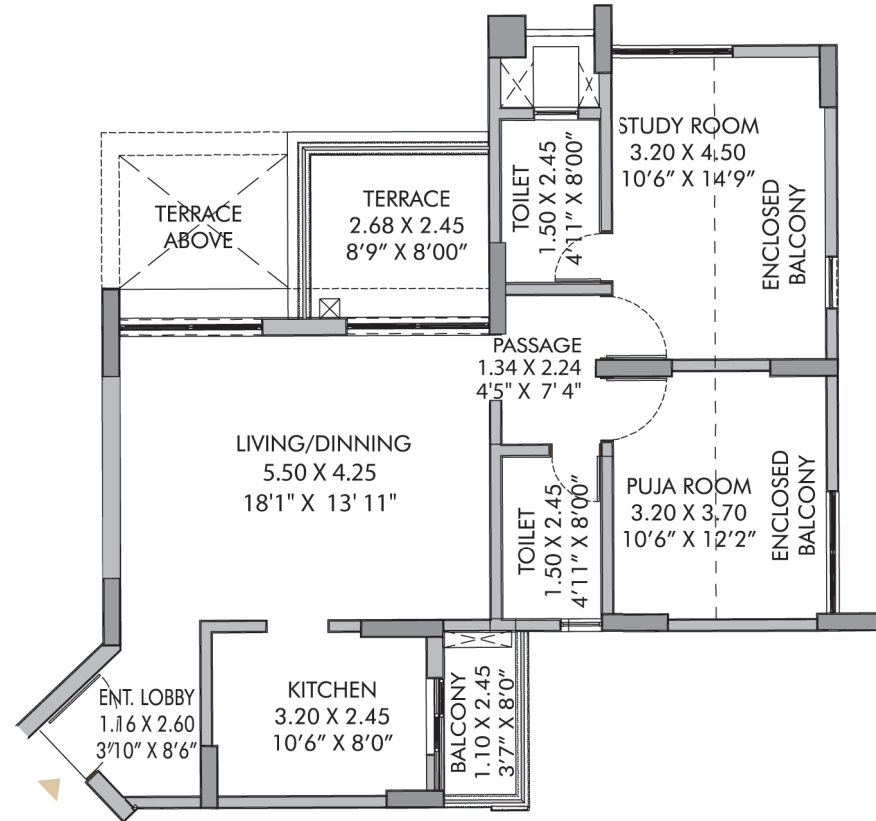
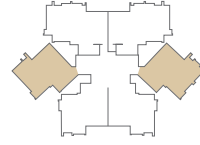


UNIT	FLAT TYPE	CARPET	TERRACE	ENCLOSED BALCONIES	DRY BALCONY
SQ. M.	2 RLK	72.47	5.77	6.28	2.21
SQ. FT.	2 RLK	780.07	62.11	67.60	23.79

The internal dimensions mentioned in the plan include the thickness of plaster.  
The area in sq. ft. has been mentioned just for the convenience of customer for better understanding.

# 'F' BUILDING

2 ROOM LIVING KITCHEN

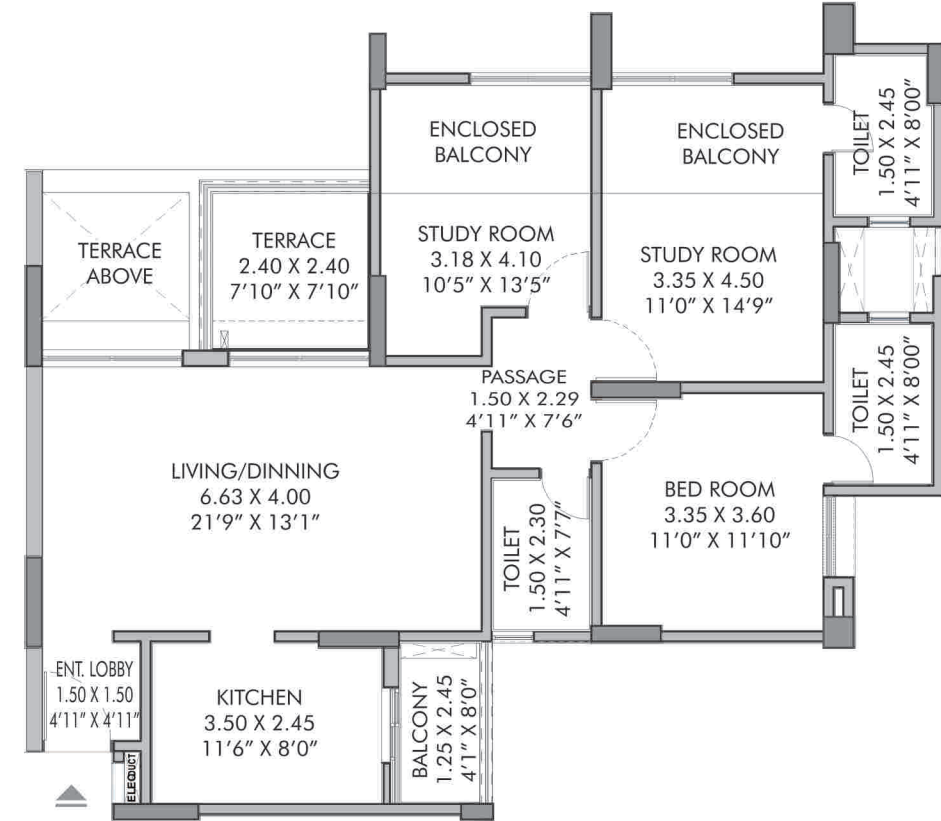
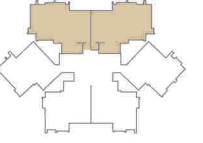


UNIT	FLAT TYPE	CARPET	TERRACE	ENCLOSED BALCONIES	DRY BALCONY
SQ. M.	2 RLK	64.46	6.22	13.57	2.31
SQ. FT.	2 RLK	693.85	66.95	146.07	24.86

The internal dimensions mentioned in the plan include the thickness of plaster.  
The area in sq. ft. has been mentioned just for the convenience of customer for better understanding.

# 'G' BUILDING

3 ROOM LIVING KITCHEN



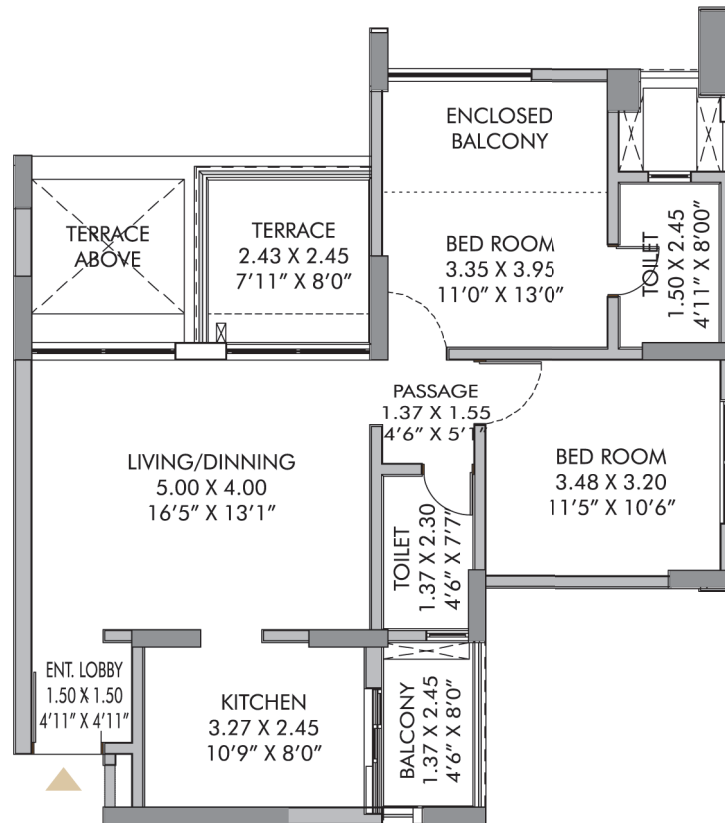
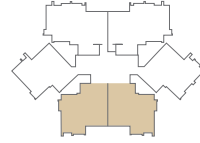
UNIT	FLAT TYPE	CARPET	TERRACE	ENCLOSED BALCONIES	DRY BALCONY
SQ. M.	3 RLK	86.33	5.44	11.28	2.62
SQ. FT.	3 RLK	929.26	58.56	121.42	28.20

The internal dimensions mentioned in the plan include the thickness of plaster.  
The area in sq. ft. has been mentioned just for the convenience of customer for better understanding.



# 'G' BUILDING

2 ROOM LIVING KITCHEN

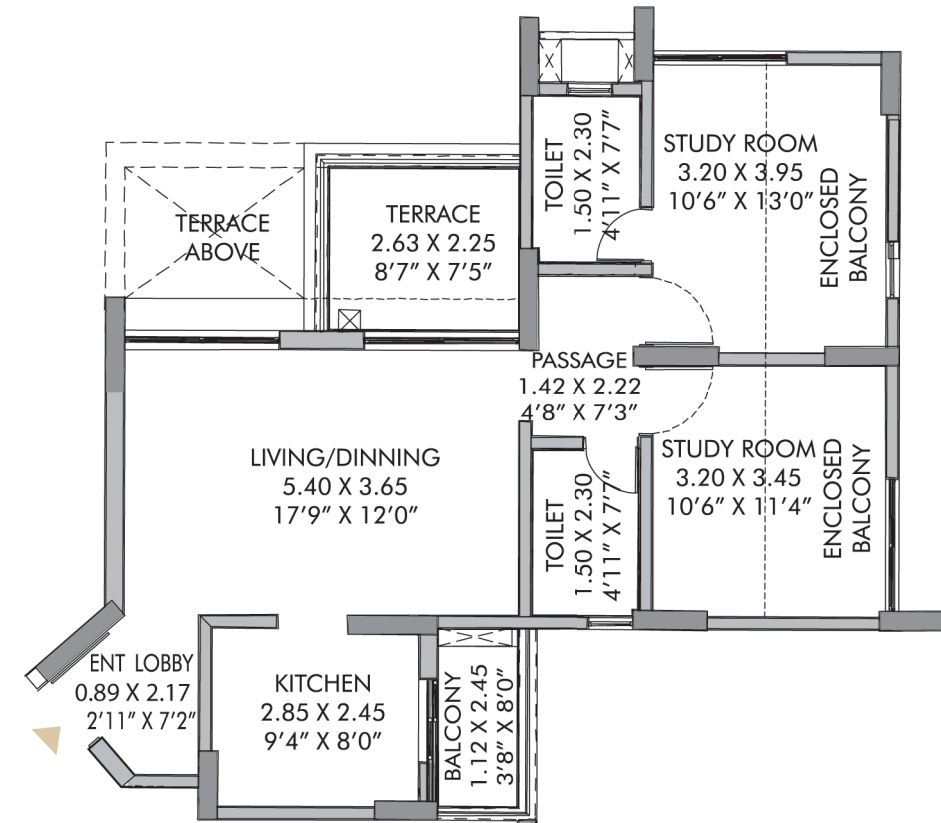
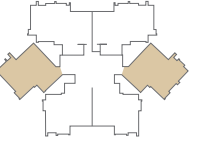


UNIT	FLAT TYPE	CARPET	TERRACE	ENCLOSED BALCONIES	DRY BALCONY
SQ. M.	2 RLK	63.22	5.61	5.75	2.86
SQ. FT.	2 RLK	680.50	60.39	61.89	30.79

The internal dimensions mentioned in the plan include the thickness of plaster.  
The area in sq. ft. has been mentioned just for the convenience of customer for better understanding.

# 'G' BUILDING

2 ROOM LIVING KITCHEN

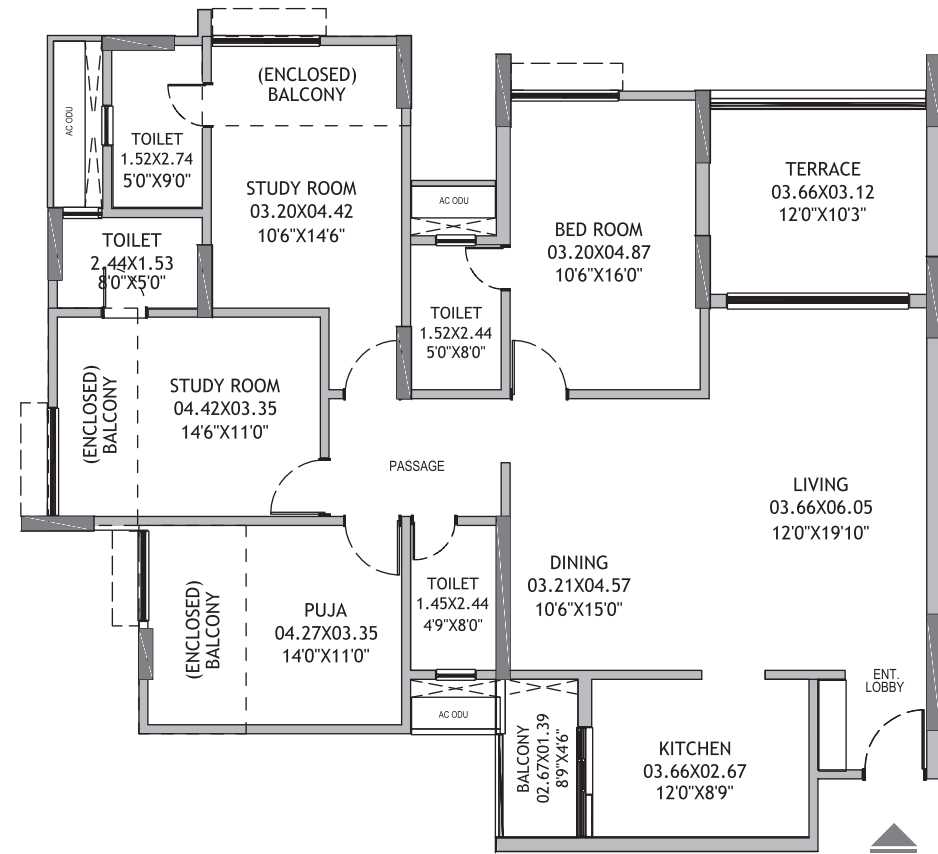
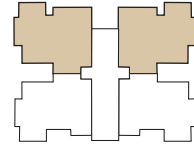


UNIT	FLAT TYPE	CARPET	TERRACE	ENCLOSED BALCONIES	DRY BALCONY
SQ. M.	2 RLK	56.84	5.54	12.26	2.34
SQ. FT.	2 RLK	611.83	59.63	131.97	25.19

The internal dimensions mentioned in the plan include the thickness of plaster.  
The area in sq. ft. has been mentioned just for the convenience of customer for better understanding.

# 'H' BUILDING

4 ROOM LIVING KITCHEN

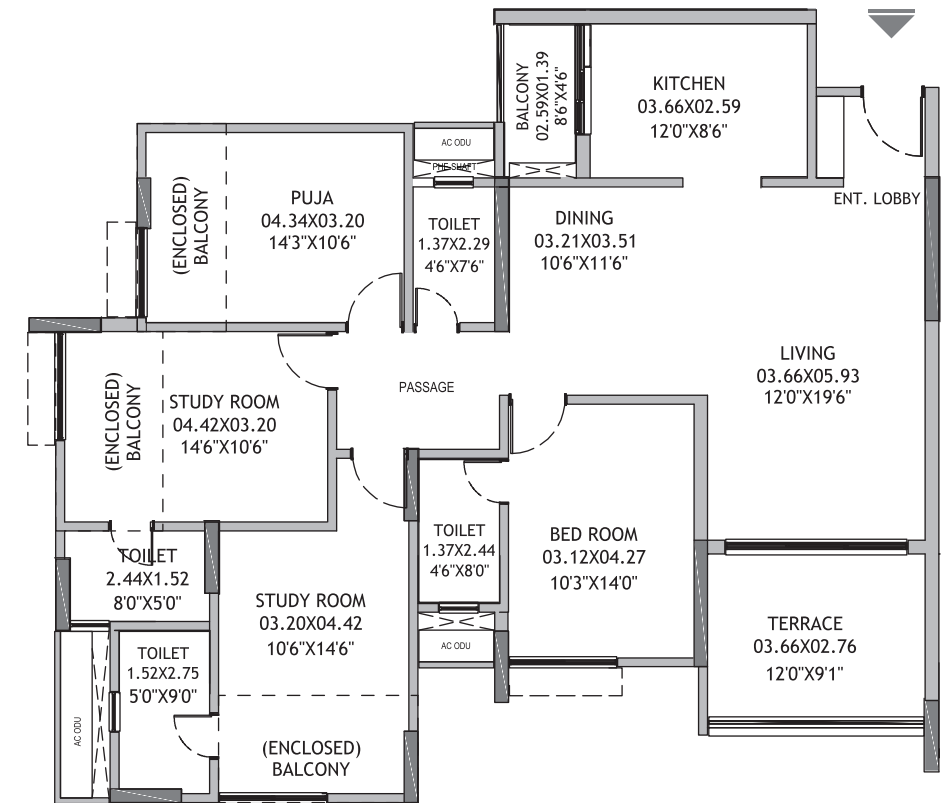
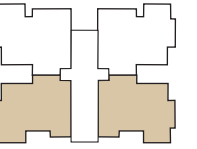


	FLAT TYPE	CARPET	TERRACE	ENCLOSED BALCONIES	DRY BALCONY
SQ. MT	4 RLK (L)	127.42	11.09	14.53	2.96
SQ. FT.	4 RLK (L)	1371.55	119.37	156.40	31.86

The Internal dimensions mentioned in the plan include the thickness of plaster  
The area in Sq. Ft. has been mentioned just for the convenience of customer for better under standing.

# 'H' BUILDING

4 ROOM LIVING KITCHEN



	FLAT TYPE	CARPET	TERRACE	ENCLOSED BALCONIES	DRY BALCONY
SQ. MT	4 RLK (S)	117.66	9.74	15.12	2.88
SQ. FT.	4 RLK (S)	1266.49	104.84	162.75	31.00

The Internal dimensions mentioned in the plan include the thickness of plaster  
The area in Sq. Ft. has been mentioned just for the convenience of customer for better under standing.



**CONNECTIVITY**  
*FULL of LIFE*

Hinjawadi IT Park	05 km	Hospitals,
Pune University Circle	07 km	Educational Institutions,
Deccan Gymkhana	10 km	Hotels, Multiplexes,
Pune Railway Station	15 km	Malls, Restaurants are all
Pune Airport	20 km	within a 2 km. radius
Mumbai	150 km	

\*Approx. distance.



PRIDE PURPLE PROPERTIES

**PRIDE PURPLE BUILDERS LLP**

Corporate Office: 5th Floor, Pride House, 108, Ganeshkhind Road, Near Pune University, Pune 411016.

Call: +91 20 67091000 | [www.pridepurpleproperties.com](http://www.pridepurpleproperties.com)

Site Address: Park Ivory, Park Street, Near Kalewadi Chowk, Wakad, Pune 411057.

Call: +91 98504 80000, 98505 80000



MahaRERA No.: P52100015699

[maharera.mahaonline.gov.in](http://maharera.mahaonline.gov.in)

Note: The contents of this brochure are purely conceptual and have no legal binding on us. The developers reserve the right to amend the layout, plans, number of floors, elevation, colour scheme, specifications, and amenities etc.