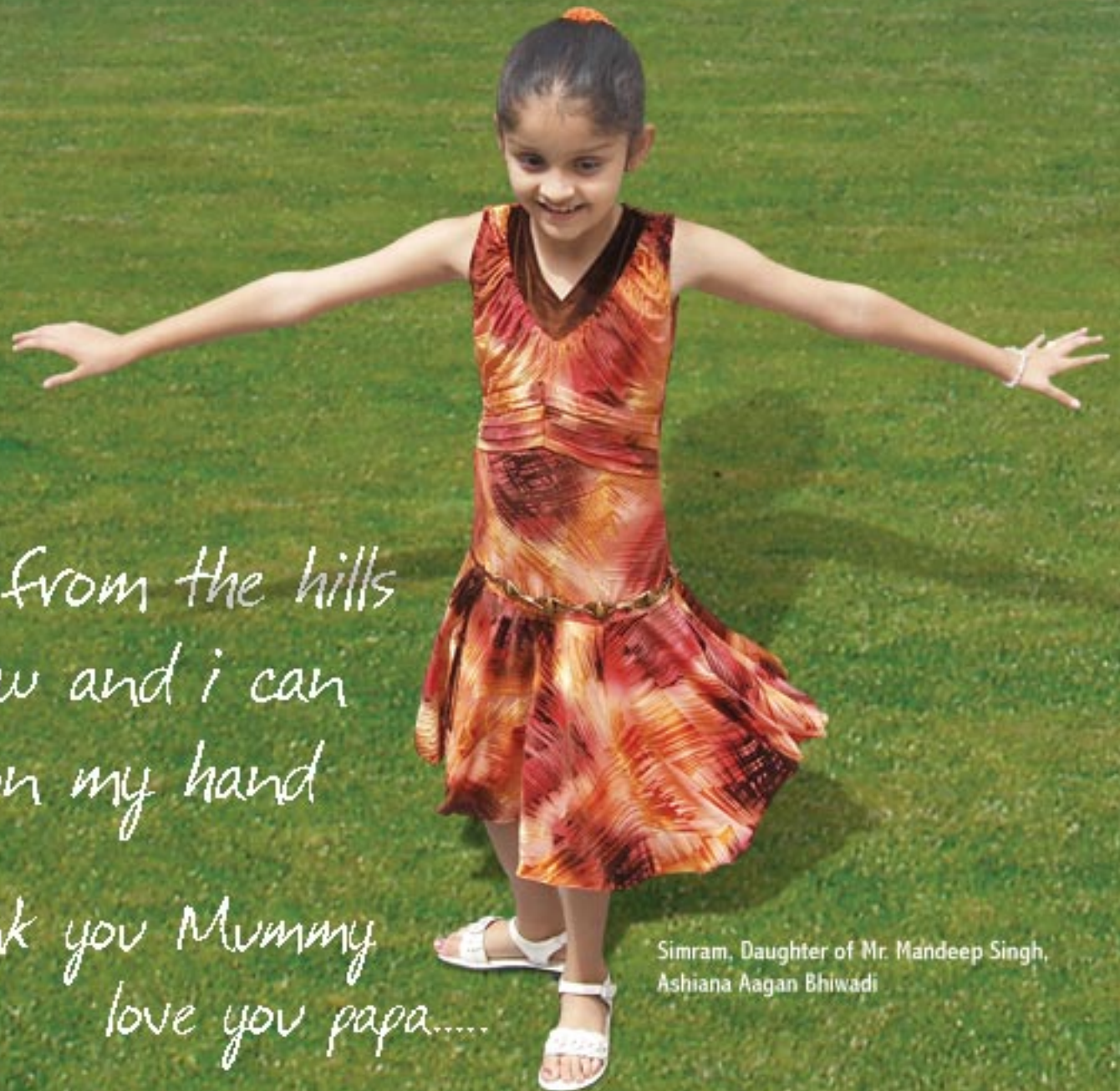


Imagine a Beautiful Home...  
Acres of park to play...  
The wonderful evergreen trees and  
blooming flowers all around....





where the rainbow from the hills  
comes to my window and i can  
see butterflies sit on my hand

Thank you Mummy  
love you papa.....

Simram, Daughter of Mr. Mandeep Singh,  
Ashiana Aagan Bhiwadi



A S H I A N A  
**BRAHMANANDA**  
JAMSHEDPUR

DISCOVER QUALITY LIVING

# Elevations

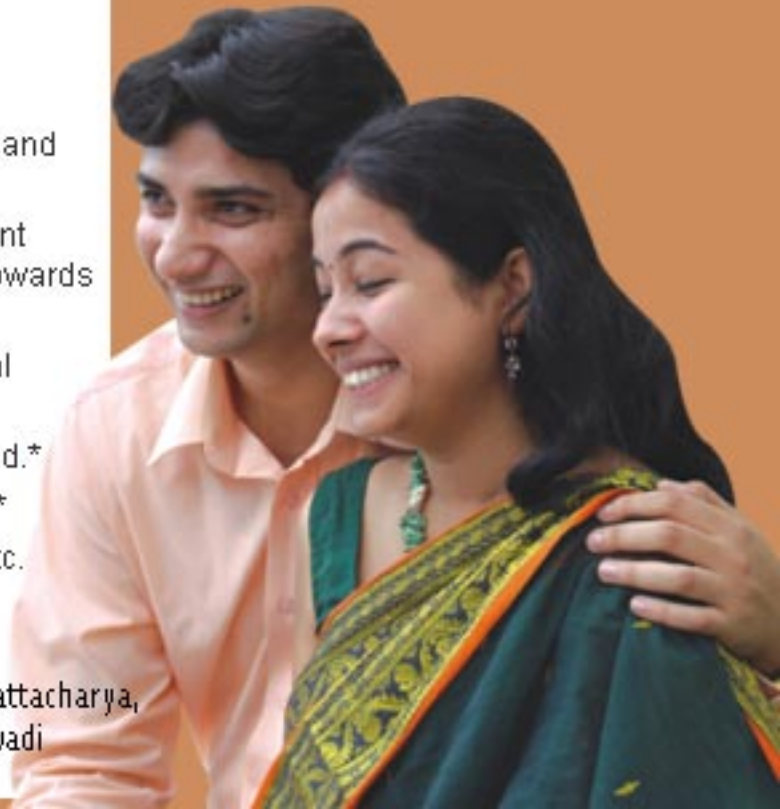


Artistic aerial view of Brahmananda Complex

# Highlights

- Accommodation : G + 4 stories with 2 & 3 BHK apartments with Lift.
- Design : Efficiently designed units for better space management.
- Recreational Facility : Gymnasium, pool table, multipurpose hall, badminton court, etc.
- Swimming Pool : Swimming pool for relaxation & fun with the family.\*
- Power Supply : Power supply through JSEB backed by 750 watt of stand-by power in each unit from central generator.
- Water Supply : Ample water supply from own tubewell.
- Security : 24-hour internal security with intercom.
- Telephone : Additional telephone cabling in each flat to enable Internet connectivity.
- Landscaping : Professional landscaping with 2 Acre parks, walking tracks, fountains and trees all around the complex.
- Services : Well lit roads, underground pipeline for water and sewerage and concealed cabling for telephone, electricity and TV.
- Hygiene : In house sewerage treatment plant\* to ensure an environment friendly complex. Recycled water to be used in horticulture towards environment conservation.
- Eco-friendly : Rain water harvesting system in place to preserve our natural resources.
- Car Parking : Option of covered as well as open car parking will be provided.\*
- Maintenance : High quality maintenance assured by subsidiary of Ashiana.\*
- Housing Finance : Available from all major financial institution like HDFC, SBI etc.

\* at extra cost



Mrs. & Mr. Anjan Bhattacharya,  
Ashiana Aagan, Bhiwadi

## Location Map



Map not to scale

### LOCATION HIGHLIGHTS

- ✓ Ashiana Brahmananda is located in Tamolia, in view of the complete range of the Dalma Hills.
- ✓ It is located between the Brahmananda hospital on one side and open fields on the other.
- ✓ Just a stone's throw away from the Mango bridge on the Rachi-Kolkatta Highway.
- ✓ Ashiana Brahmananda is close to city and has access to schools, markets, cinema halls, banks & hospitals.
- ✓ Vishal Mega Mart, DPS & other number of schools, Rusi Modi centre of excellence & other educational institutions are close by

# Maintenance



## ASHIANA CARES

1. State-of-the-art maintenance services.
2. Ashiana has trained professionals to carry out maintenance activities in the field of civil, electrical, mechanical, sanitation, water supply, security, horticulture.
3. Professional landscaping for manicured lawns, water bodies, tree plantation and seasonal fauna.
4. Well kept streets & common areas, garbage disposal, proper yard lighting, sewerage treatment plant, generator back up etc.

# Floor Plan

3 BR Apartment + Store  
Super Built-up Area

Option - A

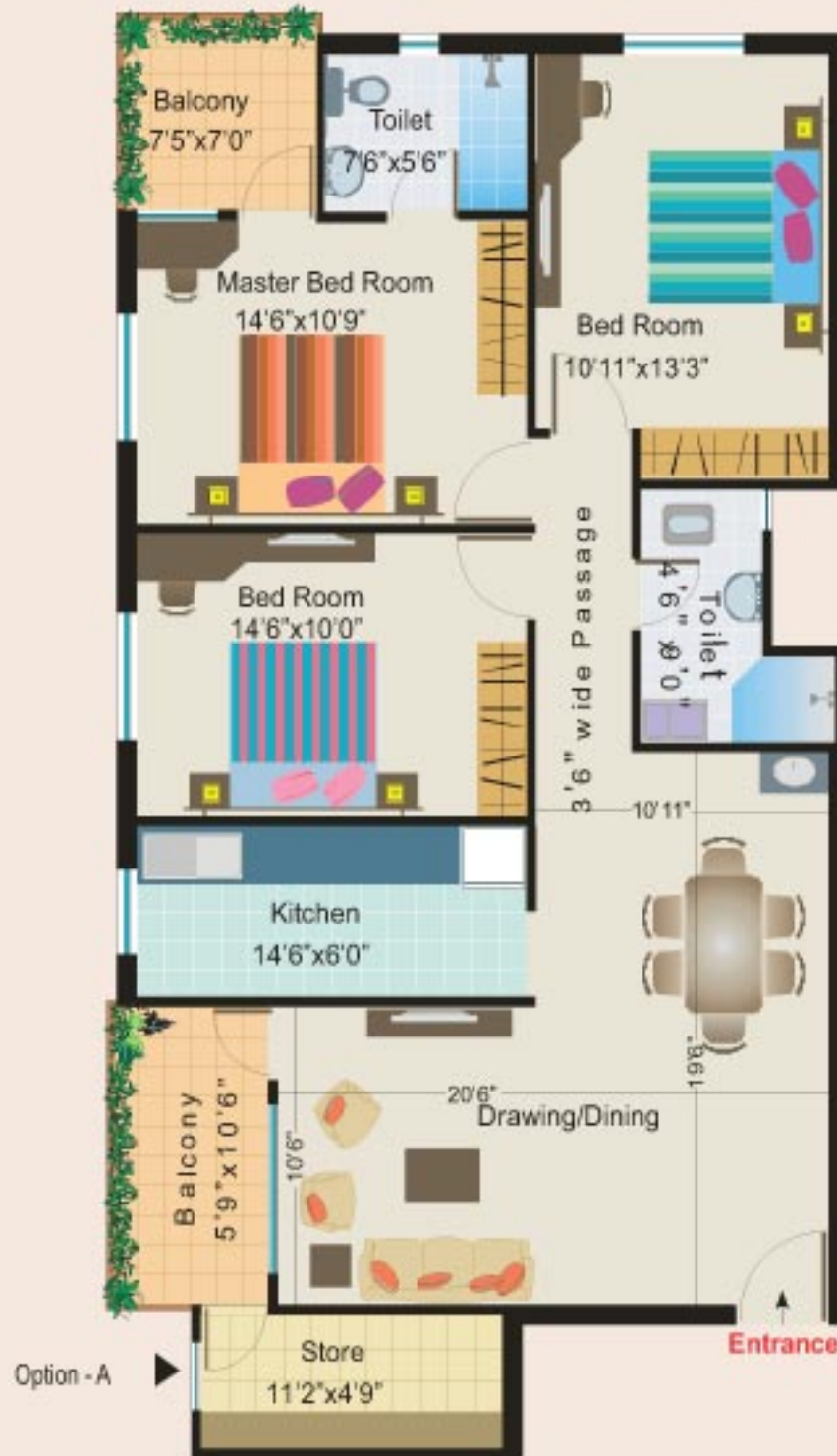
1390 Sq. ft. (129.18 Sq. mt.)

Option - B

1410 Sq. ft. (131.04 Sq. mt.)

*Emerald*

Option - B



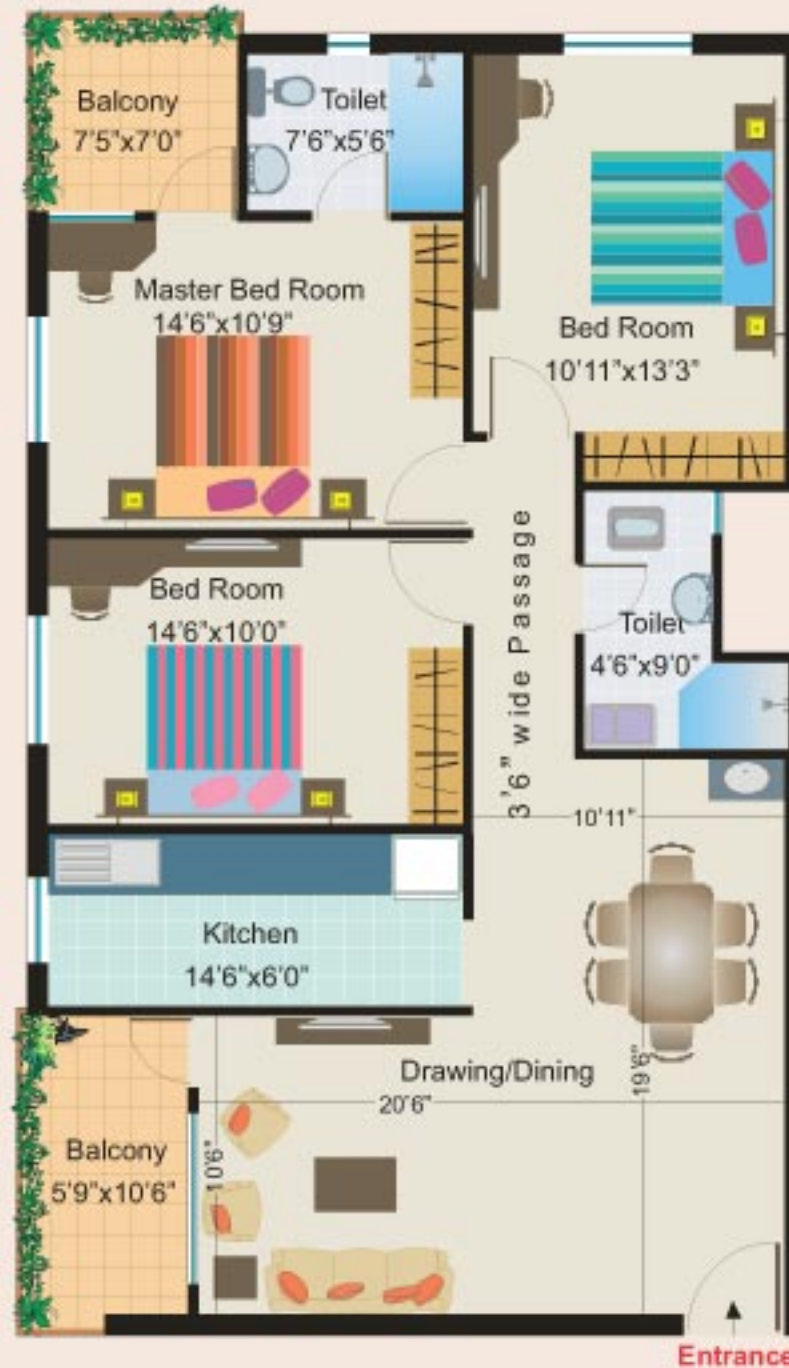




ASHIANA  
**BRAHMANANDA**  
JAMSHEDPUR

3 BR Apartment  
Super Built-up Area  
1330 Sq. ft.  
(123.60 Sq. mt.)

*Emerald*





ASHIANA  
**BRAHMANANDA**  
JAMSHEDPUR

2 BR Apartment + Store  
Super Built-up Area

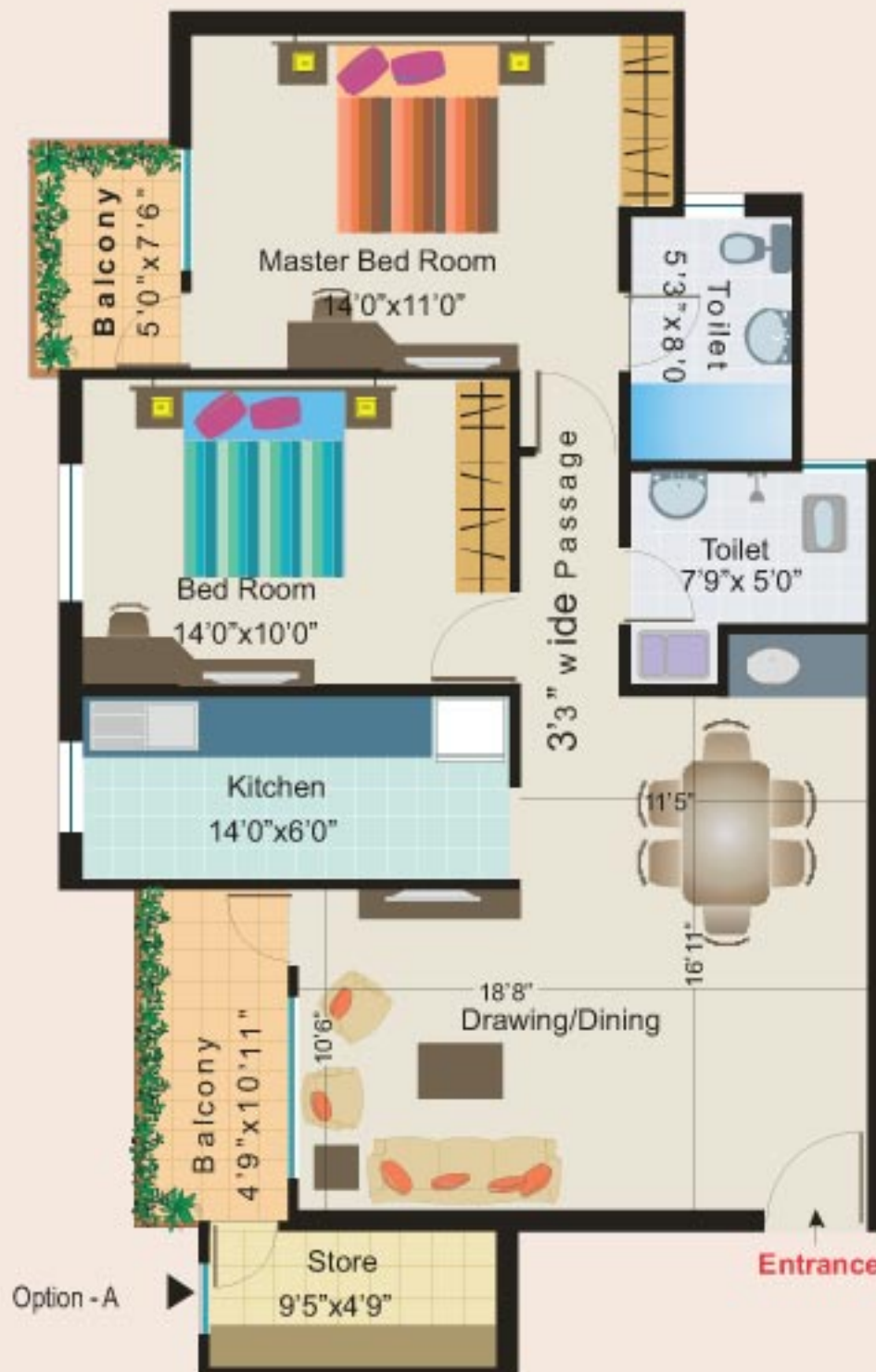
Option - A

1130 Sq. ft. (105.02 Sq. mt.)

Option - B

1150 Sq. ft. (106.88 Sq. mt.)

*Ruby*



Option - B

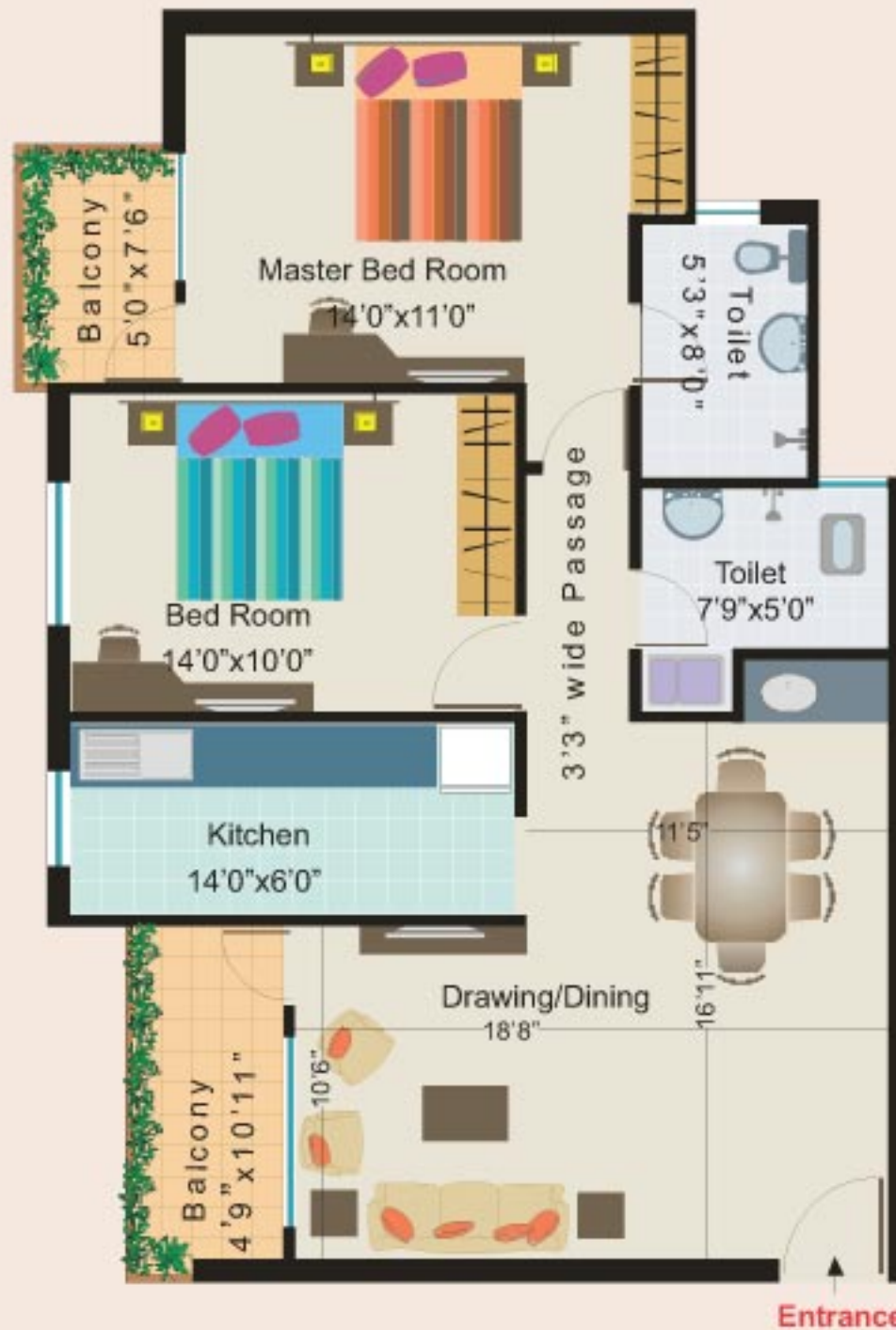




ASHIANA  
**BRAHMANANDA**  
JAMSHEDPUR

2 BR Apartment  
Super Built-up Area  
1080 Sq. ft.  
(100.37 Sq. mt.)

*Ruby*





ASHIANA  
**BRAHMANANDA**  
JAMSHEDPUR

2 BR Apartment + Store  
Super Built-up Area

Option - A

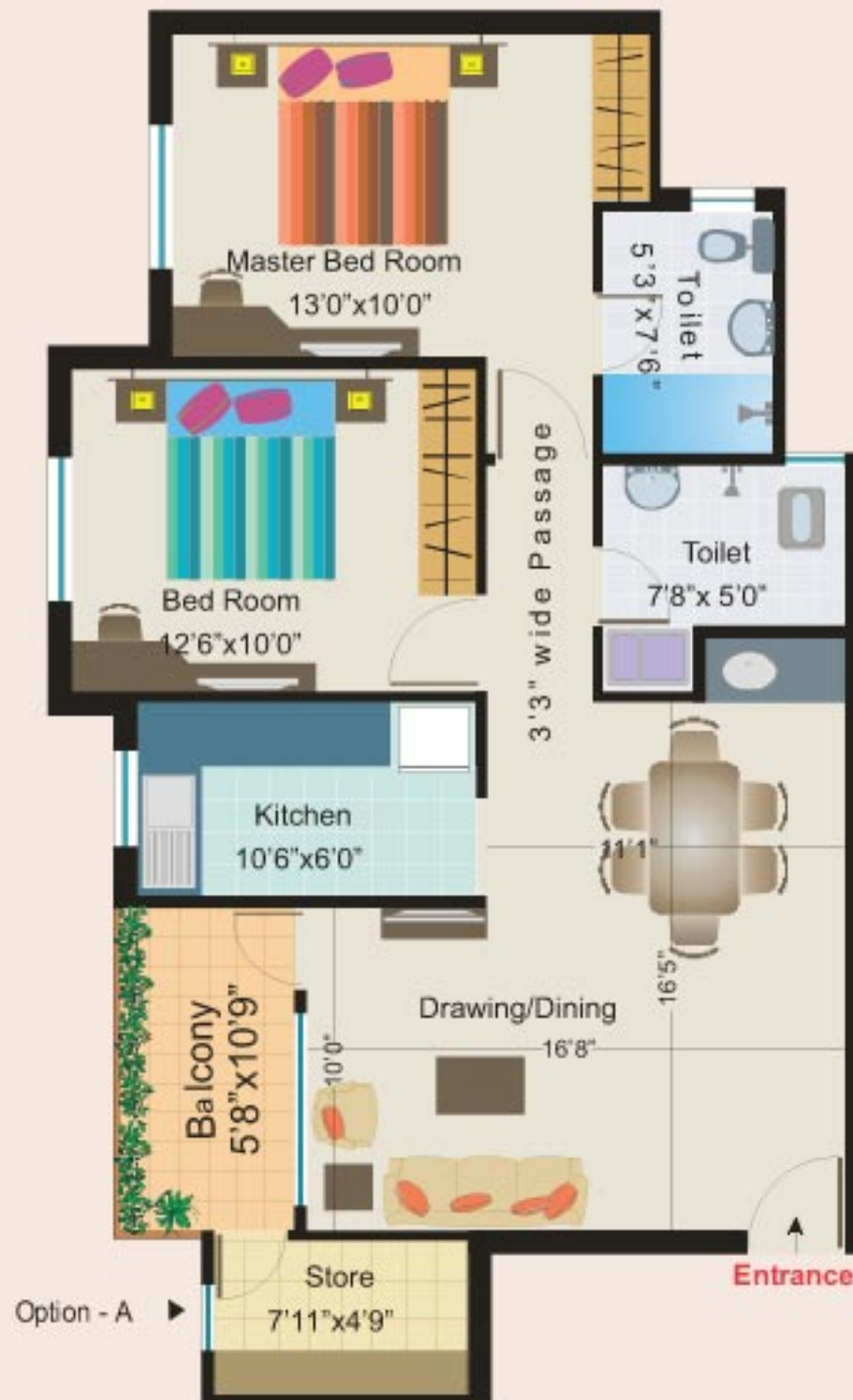
980 Sq. ft. (91.08 Sq. mt.)

Option - B

1000 Sq. ft. (92.94 Sq. mt.)

*Deal*

Option - B

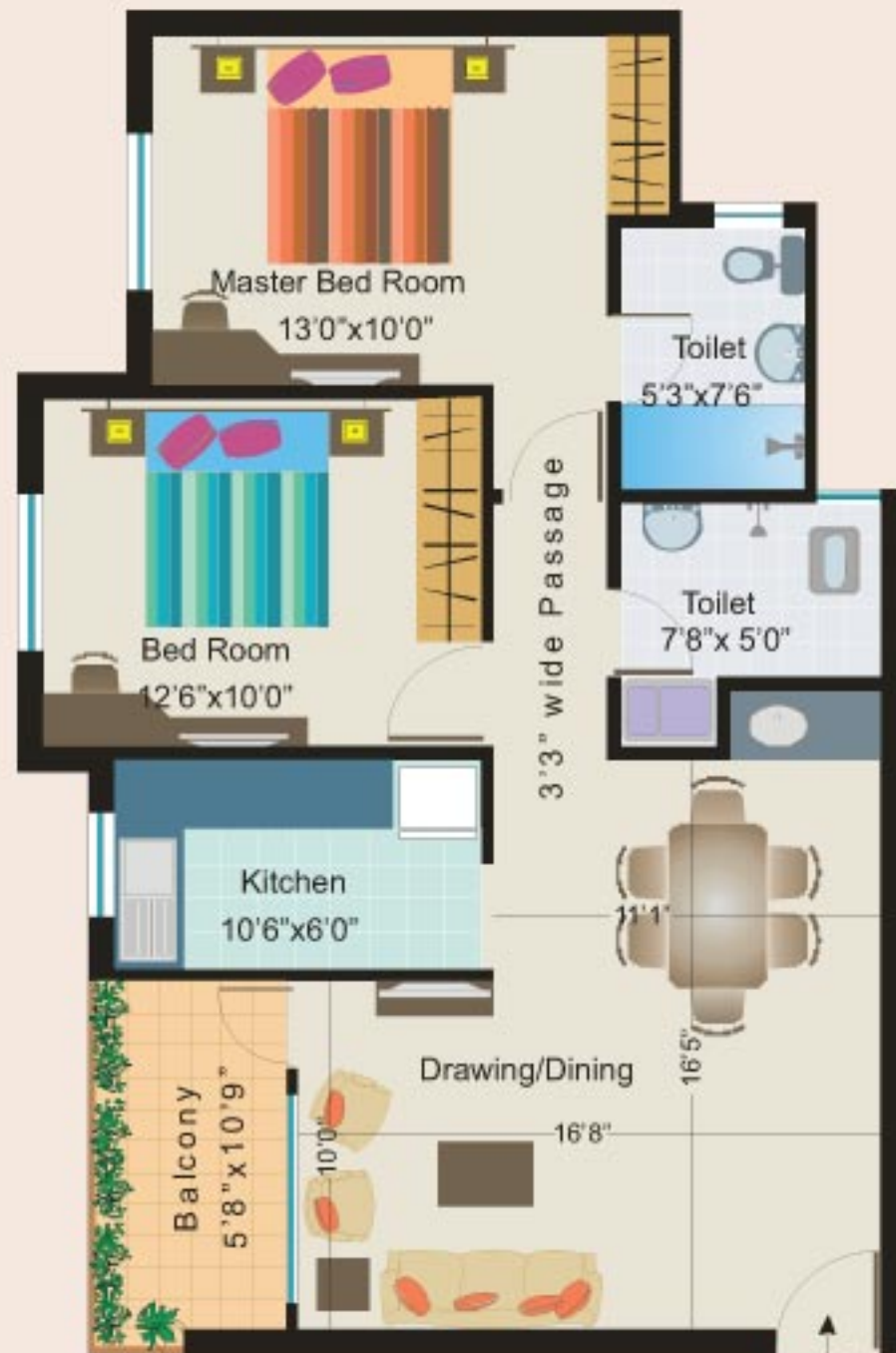




ASHIANA  
**BRAHMANANDA**  
JAMSHEDPUR

2 BR Apartment  
Super Built-up Area  
940 Sq. ft.  
(87.36 Sq. mt.)

*Deal*



Entrance

# Specifications

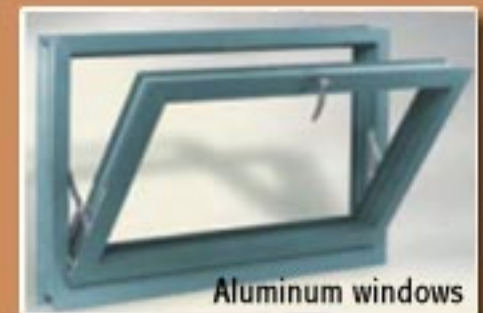
Wall finishes	Internal	All internal walls will be plastered and finished with lime punning
	External	Exquisitely designed classical exteriors finished in Terracoat/Santaxmat.
Flooring	Drawing/Dining	Vitrified Tiles.
	Bedrooms/Balconies	Ceramic Tiles.
Toilets	Walls	Ceramic Tiles upto a height of 7ft.
	Flooring	Ceramic Tiles.
	Fittings	A wash basin, mirror, towel rail and soap dish. Bath fittings of standard make.
	Sanitary ware	Vitreous white ceramic sanitary ware of standard make. Cistern will be of PVC.
Kitchen	Hot & Cold Water	Provision for hot and cold water supply in all the toilets.
	Flooring	Ceramic tiles.
	Platform	A Working platform in black granite with stainless steel kitchen sink and provision for hot & cold water supply.
	Wall	2 ft. Ceramic tiles dado above working platform with point for aquaguard.
Windows		Sliding aluminum windows with steel grill and 4 mm glass.
Doors	Main Door	Molded skin door painted with mortice lock, magic eye and decorative brass handles.
	Other Doors	30 mm thick flush doors of hardwood, painted with 2 coats of synthetic enamel paint.



# Specifications

Electrical	Fittings Wiring	Modular electrical switches and sockets. All electrical wiring in concealed conduits with copper wires. Convenient provision and distribution of light and power plugs.
Water Supply		Through deep tube wells and required numbers of overhead tank or a suitably located water tower.
Generator		Suitable capacity to provide 750 watts emergency supply to each unit. Power back-up in lift and other common areas, water pumps, STP etc.
Tele/TV Point		In Drawing / Dining room and Master Bed room
Lift		A passenger lift in each block of G + 4 stories with generator back-up.
Staircase		Flooring combination of tiles and Kota stone.
Other Facilities		Washing machine point with water inlet and outlet at a convenient location.

**Legal Note:** All the building plans, layouts, specification etc. are tentative and subject to variation and modification as decided by the Company/Architect. Accessories shown in the layout plans such as furniture, electrical appliances, cabinets etc, are indicative and not a part of the sale offering.



## Jamshepur:

Ashiana Trade centre  
Adityapur, Jameshepur - 831013  
Ph: (0657) 238 3838  
Fax: (0657) 238 3647

## Head office

304, Southern Park  
Saket Destruck Centre  
Saket, New Delhi - 110017  
Ph: (011) 4265 4265  
Fax: (011) 4265 4200

**SMS AWJ to 56677**

E-mail : [sales@ashianahousing.com](mailto:sales@ashianahousing.com)

Web : [www.ashianahousing.com](http://www.ashianahousing.com)

