



Your golden opportunity  
to invest



## radiant, suburban living

Welcome to JR CITY. A residential township created with vision, planning, meticulous implementation and a passion for excellence, to bring back to Bangalore the joys of living in a rich natural environment.

Located in the fastest growing part of East Bangalore between Whitefield (Bangalore's IT Hub) and Hoskote (Bangalore's new automobile, logistics and industrial hub) JR CITY is spread over 19 acres which combines proven town planning systems, new age urban design and the splendour of nature to create an environment designed for living. Your perfect home if you are looking at a better quality of life and a rewarding investment opportunity.



**JR CITY**

## living redefined

Designed as a world class residential township that will fulfil your living and lifestyle needs not just today, but through the future, JR CITY'S enriched 360 degree living environment ensures that every aspect of your life is planned for and all your needs are fulfilled.

At JR CITY you have complete freedom to define your space requirements and build your dream home.

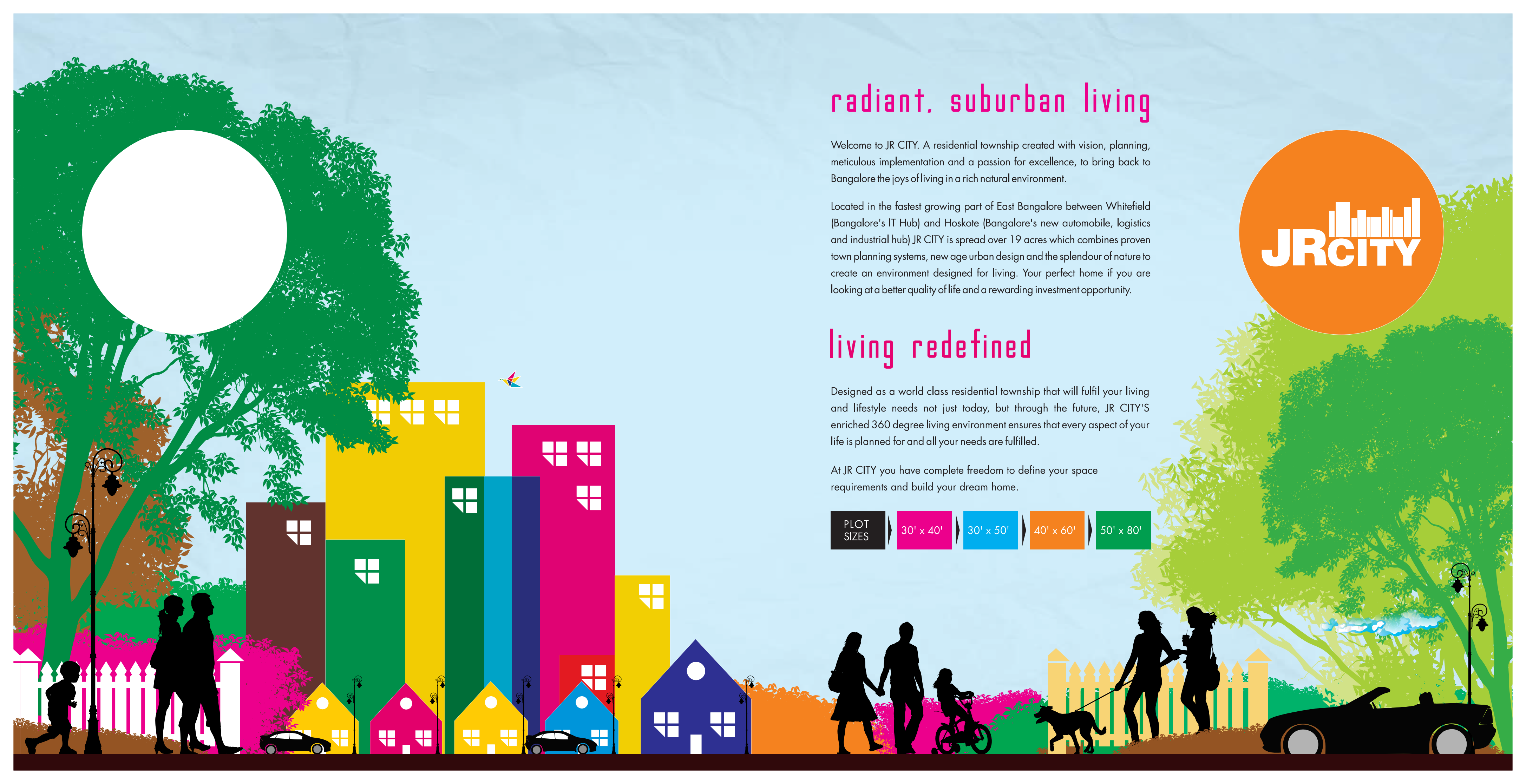
PLOT  
SIZES

30' x 40'

30' x 50'

40' x 60'

50' x 80'







live

#### LUXURY LIFESTYLE ENCLAVE

- Grand Entry Plaza
- State-of-the-art urban design and town planning
- Exclusive and well designed living spaces
- Extensive landscaping across the township
- Secure living environment



enjoy

#### WORLD CLASS INFRASTRUCTURE

- Well designed road network of 80 Feet, 40 Feet and 30 Feet Asphalted Roads with pedestrian walkways lined with shade giving trees.
- Underground water sewage connection & Rainwater harvesting units with sewage treatment plant.



play

#### SPORTS & GAMES

- Tennis Court
- Outdoor activities
- Jogging & Walking Track
- Dedicated Children's Play Areas

## connect

At JR CITY you will be spoiled by the sheer convenience of having everything around you and the accessibility to the things you need. From everyday groceries to the luxury shopping, from leisure to entertainment, you will find it all, just minutes away or a short drive from your home.

#### WORKSPACES

Just a 15 minute drive to International Tech Park, the EPIP Zone and the offices of leading global majors like SAP, HCL, GE, etc

#### SCHOOLS & COLLEGES

JR CITY is in close proximity to leading institutions like Whitefield Global School, Baldwin International School, Brigade International School, MVJ Engineering College etc,

#### RESIDENTIAL DEVELOPMENTS

JR CITY is surrounded by numerous existing and proposed residential townships from leading developers. Also coming up in the area is the Karnataka Housing Board's Mega Township.

#### CONNECTIVITY

Well connected by the Old Madras Road & NH 207 – the bypass of NH 7 that runs across Devanahalli, Whitefield, Sarjapur and Hosur Road. Just 12 kms from Whitefield and 3 kms from NH 207, JR CITY is just 500 metres away from the proposed 300 Feet BMRDA Peripheral Ring Road.



## benefit



#### A LIFETIME OF REWARD

A state-of-the-art and perfectly planned residential development set amidst serene natural surroundings and landscaped elegance, owning a plot at JR CITY to build your home or just hold as an investment is your gateway to an outstanding lifestyle and the key to exceptional returns.

Combining accessibility with exclusivity and convenience with comfort, JR CITY has been specially created for those who are looking at taking their living experience to a whole new level.

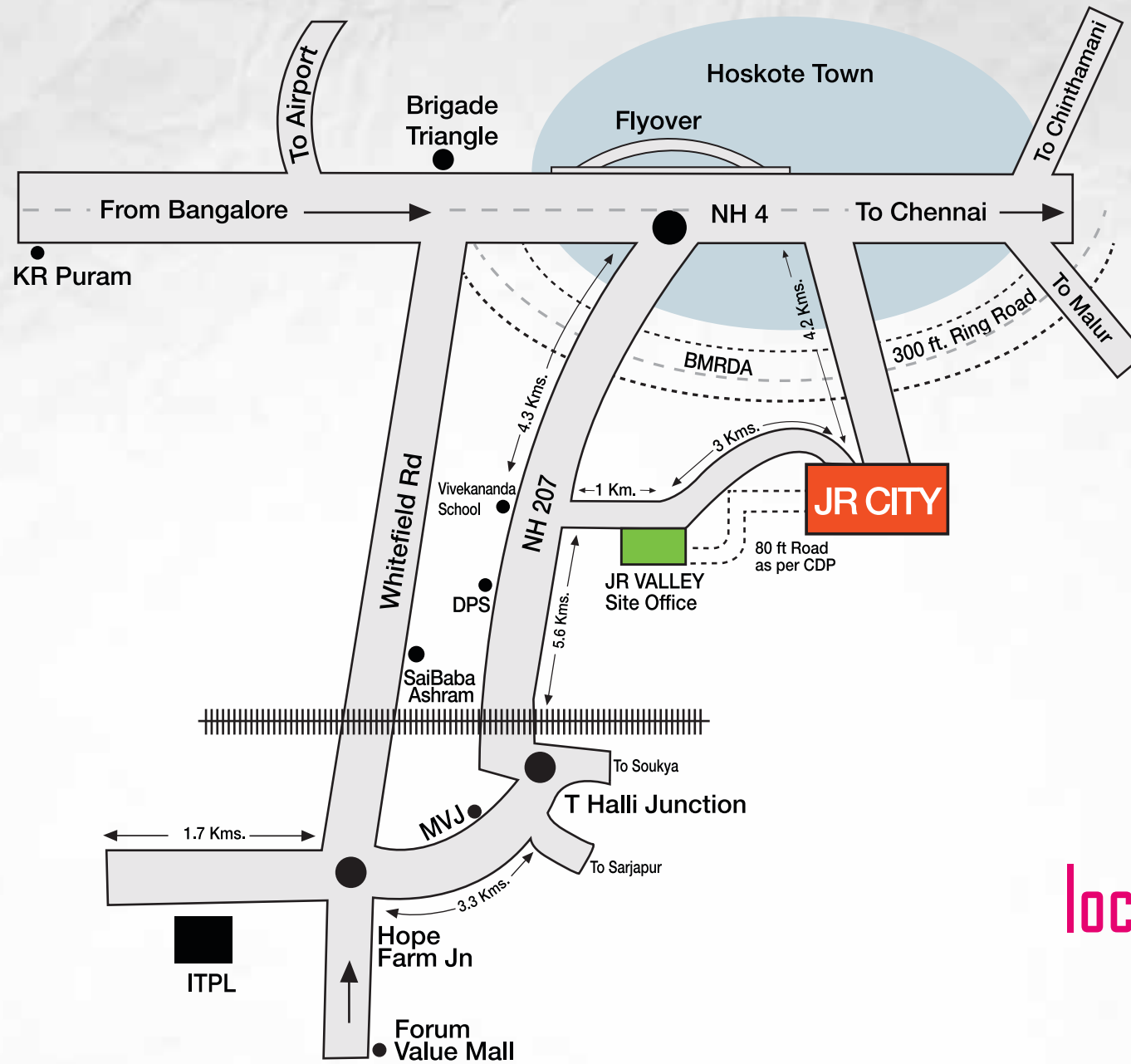




# master plan



40x60	30x40
50x80	30x50
Odd Site	



## location map

Disclaimer: This brochure is purely conceptual and not a legal offering. The developer reserves the right to change/alter specifications mentioned herein.



JR HOUSING DEVELOPERS  
PRIVATE LIMITED

SALES & MARKETING OFFICE:  
#90, UB Elega, 2nd Floor, Karthik Nagar, ORR Marathahalli, Bangalore -560037

SITE OFFICE: JR CITY, Jinnagara Village, Jadeganahalli Hobli,  
Hoskote Taluk, Bangalore 562114

CORPORATE OFFICE:  
# 71, 2nd Floor, RJ Gardens, Outer Ring Road, Marathahalli, Bangalore 560 037. India

- Sales: +91 91640 05225/29
- Email: info@jrhousing.com • www.jrhousing.com