

*Affordability has a new name...*





## THE BUILDER WHO DELIVERS

We are aware; "Thrissur Builders" need no introduction. Nevertheless, a word or two about our company will go a long way in placing you in the right position. We have proved every bit of our efficiency and honesty in completion of our projects as per schedule to the maximum satisfaction of our customers. It will not be out of place to mention here that our completed and handed over projects stand testimony to our firm commitment to clients. We are proud to say that satisfaction of our customers is our motto and we are second to none in home making. We have a band of dedicated work force consisting of efficient and experienced engineers, highly skilled and trained workmen and committed administrative staff for logistic support. We are sure, with the patronage and involvement of our esteemed customers, we will be able to forge ahead effectively to achieve the set goal of providing you a home of your choice. So, please do come and join the family of 'Thrissur Builders'



CREDAI  
THRISSUR

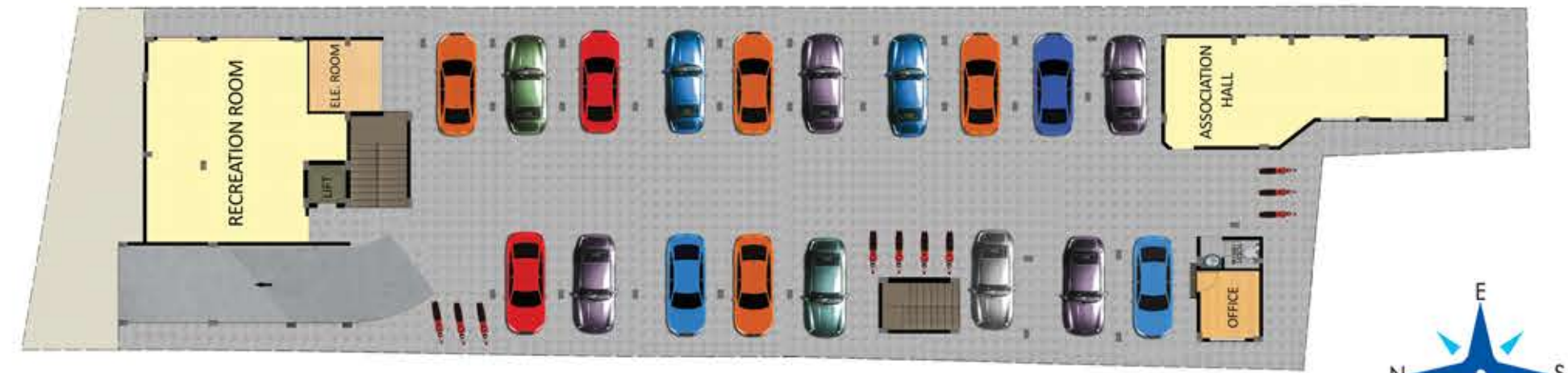


live a full life...  
...in the serenity of your home



*Rhine*  
Apartments  
CHEROOR - THRISSUR

TBPL Rhine is a choice location for those who wish to live in a quiet neighbourhood while enjoying the advantages of city life. The project location is outstanding - in the heart of the famous educational institutions of Thrissur, near businesses and services. This B+G+2 Apartment project offers 18 apartments in an elegant 3-storey, elevator-equipped building. Rhine Apartments have all the amenities and facilities to enhance your quality of life.



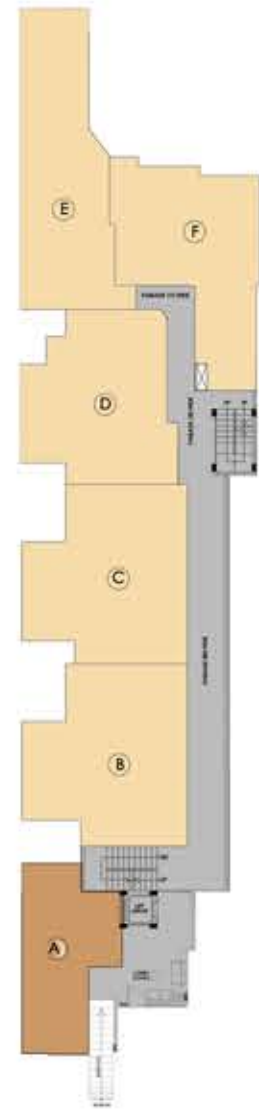
**BASEMENT FLOOR LAYOUT**



**GROUND FLOOR LAYOUT**



**TYPICAL FLOOR LAYOUT**

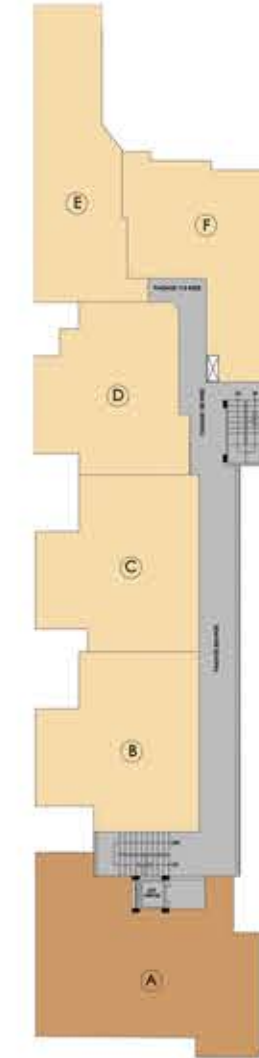


**TBPL**  
ENGINEERS & DEVELOPERS  
An ISO Certified Company



**A0 - 1 BHK-667 Sq.ft.**

- Dimensions may vary slightly during construction.
- Furnitures are indicative only.
- All dimensions are in centimeters

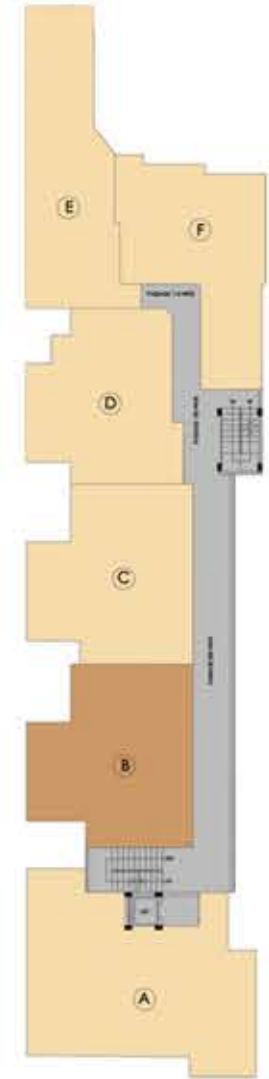


**Rhine**  
Apartments



**A1 - A2 3 BHK-1586 Sq.ft.**

- Dimensions may vary slightly during construction.
- Furnitures are indicative only.
- All dimensions are in centimeters



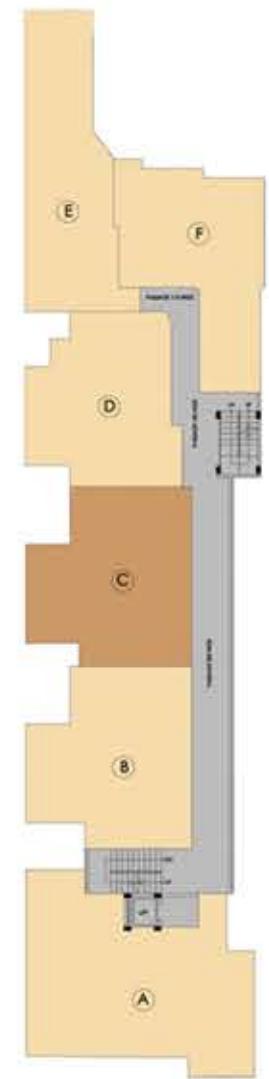
**TBPL**  
ENGINEERS & DEVELOPERS  
An ISO Certified Company



← ENTRY

**B0 - B2 2 BHK-1127 Sq.ft.**

- Dimensions may vary slightly during construction.
- Furnitures are indicative only.
- All dimensions are in centimeters



*Rhine*  
Apartments



← ENTRY

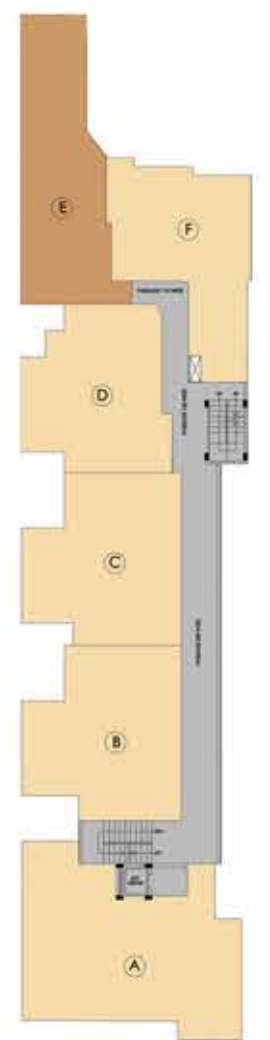
**C0 - C2 2 BHK-1127 Sq.ft.**

- Dimensions may vary slightly during construction.
- Furnitures are indicative only.
- All dimensions are in centimeters



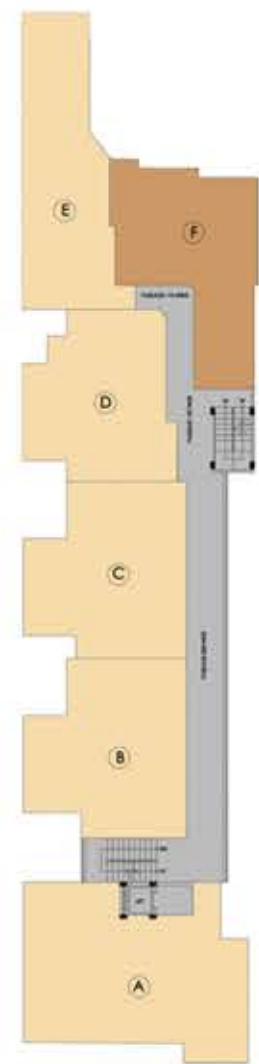
**D0 - D2 2 BHK-1030 Sq.ft.**

- Dimensions may vary slightly during construction.
- Furnitures are indicative only.
- All dimensions are in centimeters



**E0 - E2 2 BHK-1087 Sq.ft.**

- Dimensions may vary slightly during construction.
- Furnitures are indicative only.
- All dimensions are in centimeters



**F0 - F2 2 BHK-1053 Sq.ft.**

- Dimensions may vary slightly during construction.
- Furnitures are indicative only.
- All dimensions are in centimeters

## Amenities

### Common Facilities

- Ample Car Parking
- Passenger Lift
- Standby Generator
- 24 hour security
- Recreation Facilities
- Common Toilets
- Provision for Cable TV, Telephone & Intercom

### Special Amenities

- Health Club
- Association Meeting hall
- Games Room

## Terms & Conditions

- Once allotted and agreement to be signed in 21 days, the prices are firm.
- All payments only by demand draft or by local cheques favouring "Thrissur Builders Pvt.Ltd." Payable at Thrissur.
- At the time of executing the agreement the total payment due has to be paid and the balance payment as per the schedule.
- Thrissur Builders Pvt. Ltd. Reserves the right to accept or reject any application.
- The plans are not drawn to the scale and are included only for the purpose of identification. The measurements shown in the plans are indicative and may vary. Furniture lay out is only an indication of space utilization. The elevation shown in the brochure is an artistic impression only and the actual may vary according to the practical site conditions. All measurements and specifications shown in the brochure is subject to minor variations without specific and general notice. All such variations and alterations shall be purely at the discretions of the builder, as per KMBR
- If the purchaser is not entering to the agreement with the builder along with the payments within 21 days, the builder has the right to cancel the allotment. In case payments are not made as per agreement signed, the builder reserves the right to cancel the allotment, in which case the amount paid till such cancellation will be returned only after allotment of all flats and without any interest.
- The purchaser is bound to obey the Kerala Apartment Ownership Act 1983 and rules and regulations as per the Byelaws of the Association in a later stage.
- All dimensions given in the plans are not to scale.
- This brochure does not constitute a legal offer.
- Any disputes are subject to Thrissur Jurisdiction only.

*Rhine*  
Apartments



# Specification

**Foundation & Structure :** R.C.C. framed structure with suitable foundation & Walls with solid concrete blocks.

**Flooring :** Premium quality vitrified tile flooring for the entire Apartment except Kitchen & Toilets. Good quality Ceramic tiles for Kitchen & Toilets.

**Kitchen :** Counter top with good quality mirror polished black granite. Stainless steel sink with drain board, glazed tile dado up to 60 cm height above the counter.

**Sanitary & CP Fittings :** Premium quality white sanitary fittings. Provision for geyser, wall mixer in master bed toilet.

**Doors & Windows :**

Entrance door in teak. Internal doors – Moulded doors.

Toilet doors- PVC /FRP Moulded doors.

Windows - Powder coated aluminium with M.S.grill.

Ventilators - Powder coated aluminium with glass louvers.

**Painting :** Putty with emulsion finish for walls inside the apartment. Exterior emulsion paint for external walls.

Enamel paint over putty finish for door frames.

**Electrical :** Concealed conduit wiring with copper conductor for light and fan points.

6/16 amps socket points etc. controlled by ELCB and MCBs with provision for independent KSEB meters.

**Lift :** Passenger lift of standard make.

**Telephone, TV & Intercom :** Telephone, Intercom and TV points in living room.

**Generator :** Generator back-up with limited connected load for each flat.

**Air conditioning :** Split A/C point in Master bed room.



## Location Map



### LOCATION PROXIMITY

Govt. Engineering college	600 mtr.	Vimala College	500 mtr.	Manalarkavu Temple	1 k.m.
Devamatha School	3 k.m.	Daya Hospital	2.5 k.m.	Swaraj Round	3.5 k.m.
St.Francis Xavier Church	600 mtr.	All India Radio	1 k.m.	Kendriya vidyalaya	2.5 k.m.
Pallimoola					





*We Care... Our Customers...  
they bring more & more.*

Call : 9446 082 707, 9744 678 900



**THRISSUR BUILDERS PVT. LTD.**

**the perfect home makers**

25/1160/1 Machingal Lane, Thrissur - 680001- Kerala, India

PH :- +91- 487 2336652, +91- 487 2336653

E-mail : marketing@tbpl.in Web : www.tbpl.in

