


LIMITED EDITION.
LIMITLESS LUXURY.







Unravel the new. See what the eye has never seen. Feel what the heart has never felt. Hear what the ears have never heard. Taste what has never been relished before. Engage in a superlative indulgence that the connoisseurs always longed for. An experience that transcends the extraordinary. Here is yet another tribute to the human quest for the most exquisite and the rarest lifestyle.



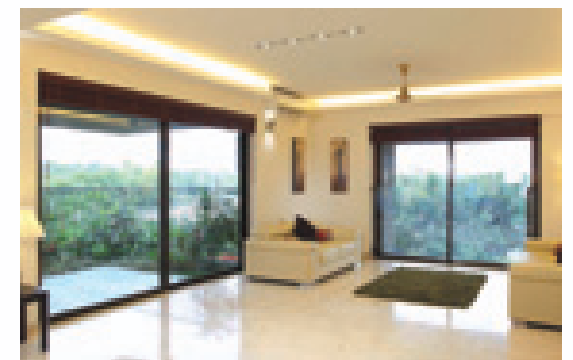
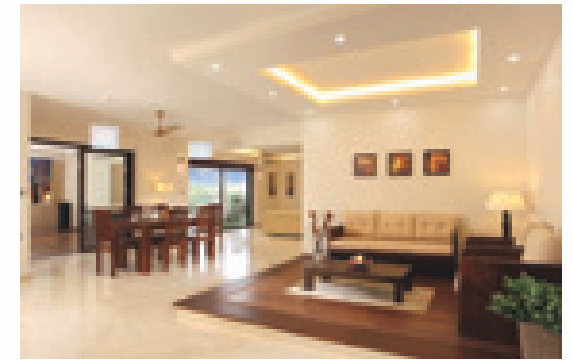


Live the ASSET PLUS Life.

Finally the most exquisite and rarest lifestyle solution for the chosen few is born with the Asset Plus series. Unravel Premium Luxury Urban Spaces (PLUS) that are limited-edition with hi-end specifications and designer features, located at the most prime spot within the city. It's a hallmark home designed by the best architects with finest finishes and an exclusive possession value. Live the chaste lifestyle, for the chosen few!



Actual Photographs



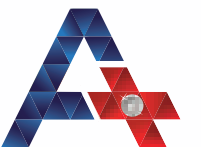
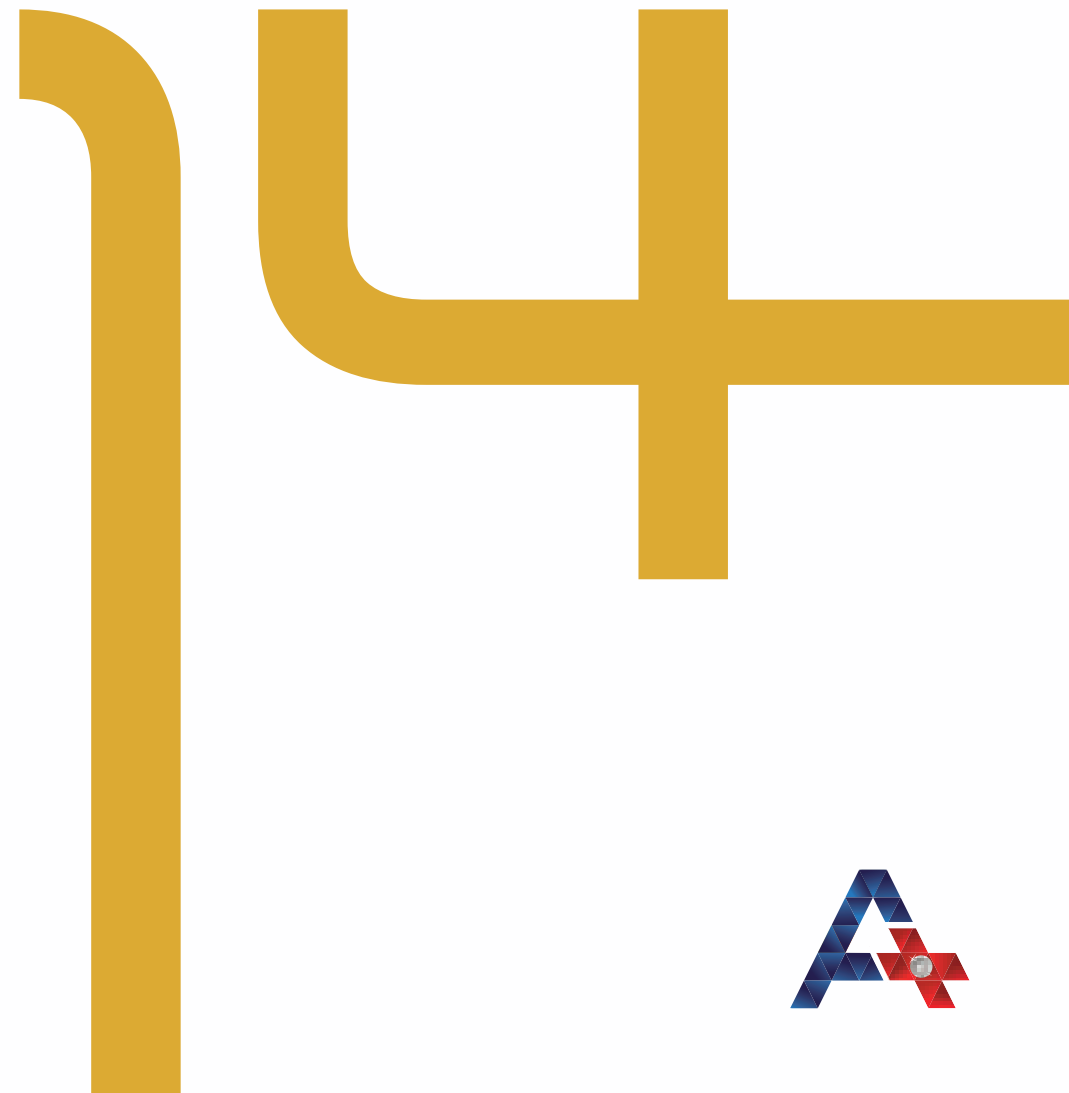
The PLUS that Peaked Kerala's Pride Internationally.

Casagrande, lake front boutique Skyvillas - the first in the Asset PLUS series - was born at the heart of the Kochi, at Thevara with just 12 exclusive designer Skyvillas. The Casagrande Skyvillas stretch from one end of the apartment to the other with a sprawling 3500 sqft of supreme luxurious living space. The project has notched-up new benchmarks in supreme luxury with its unique designer features that include architectural finesse, exterior stone cladding, spacious balconies with greenery and a well-manicured landscape. This supremely luxurious, CRISIL 7 Star rated Skyvillas with numerous national and international accolades - has inspired Asset Homes to roll out its second in this series, Asset Insignia, limited edition villas.





THE FORTUNATE



48th
Project





INSIGNIA

PRIVATE VILLAS

KALOOR, KOCHI





A 2

Limited Edition

Designer Villas for The Fortunate 14

The idea of Asset Insignia hinges on exclusivity and rarity. Only the fortunate 14 can possess them. The villas are most exquisitely designed that they have very few parallels. They are unique by design, features, location and all other things that make life most extraordinary.

Now you can own the sign of uniqueness and rarity. Come, relish!





Green Creep Canopy

It's a green ivy bower that greets you at the entry point of your signature private villas. A sight that revives in one's mind, a feeling of calmness and budding hopes. A luxury with green touch. Start life at Asset Insignia, let your new address talk more about your social stature.

Aqua Gym

Real luxury in maintaining fitness is provided at this private haven of comforts with a Gym in the swimming pool. A concept that has caught up internationally as the best method for exercise that minimizes wear and tear of the joints and muscles. It's exciting to swim and workout in the swimming pool.

Vertical Garden

A most novel concept of cladding walls with live plants take off the monotony of being in a concrete building. The vertical gardens create a great environment along with transforming the space into a green space.

Cascade Walls

The Cascade Walls being in the aqua-touch of luxury adds a sense of sophistication to the exotic environment. The water walls along with the wide paved roads and picturesque landscape enrich the beauty of this luxurious land of the chosen few.



Connoisseurs' Deft Touches

The deft touches with attention to detail include the leather-finished granite steps with ornate inlays at the entrance, the elegance of the exquisite imported Marble in the living and laminated wooden flooring in the bedroom add aesthetic sensibility to the perfect home.

Stunning Stairway

A rare combination of stainless steel, stone and wood makes your stairway most special. The designer touch adds a special elegance and uniqueness to this sheer work of art.

Touch of Technology

The touch of technology ensures better security in the villa. Video door phones, Intercom connectivity, CCTV controlled common area, Glass break sensors and other security features like outdoor gas chamber make life most secure here.

Attention to Detail

The fundamental thing in life is comfort which is taken care by adding some unique architectural features. The 11 feet high ceiling in all rooms, 4 ft. x 8ft. teak wood entrance door, 8 ft high designer doors inside, UPVC / wooden frames for windows and false ceiling with concealed lighting are some of the highlights of this project.



Fully Loaded Kitchen

A fully loaded Hacker or equivalent kitchen that makes the ultimate statement of luxury awaits you at Asset Insignia. Relish an appetizing luxury.

Club Insignia



Be different by being one among the chosen few, the fortunate fourteen at Asset Insignia. The club house has facilities like swimming pool, snooker, table tennis, card room and library. Engage in elite clubbing.

Stay Cool

Stay cool at the Asset Insignia with some astounding touches of higher order comforts. Besides the thermal roofing done with the clay tiles to keep the temperature down, Insignia comes with VRF airconditioning in all bedrooms, making life at Insignia a superior one. Another distinctive feature is the indoor gardens that bring nature into the living domain. Experience the irresistible.

Prime Location

Enjoy the rare luxury of location advantage of staying right at the heart of the city. Kaloor provides ever appreciating value and access in all directions within and outside the city. Closeness to all conveniences of life is a great boon living here.

Full Glass Walls

At the cut outs are planted full glass walls that bring plenty of natural light and nature- views to the living space. The nature interactive theme in this design is a highly progressive and contemporary architectural aspect. Change your view of life.

Life 24X7

Live an uninterrupted life at the Asset Insignia with round the clock security, water supply and generator back up. Enjoy a life that's smooth and undisturbed only at the Asset Insignia.

THE FORTUNATE





Campion School
 St George Church

Lulu Mall
EDAPPALLY

KAKANAD

ELAMAKKARA

MAMANGALAM

Oberon Mall

Vasan Eye Care Hospital

Renai Medicity Hospital

41

Ernakulam Medical Centre

JAWAHARLAL NEHRU STADIUM

Stadium Link Road

KALOOR

PVS Memorial Hospital

HIGH COURT

Lisie Hospital

MARINE DRIVE

M.G. Road

47

KADAVANTRA

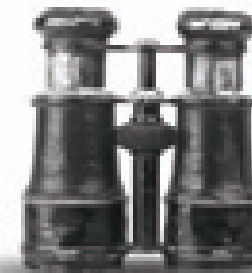
VYTTILA

Distance from major locations

Kaloor	-	1.5 km
North Railway Station	-	2.5 km
Lulu Mall	-	4.5 km
Amrita Hospital	-	7.5 km
Vyttila mobility Hub	-	7 km
Infopark	-	10km

The Rarest Home in the Rarest Location

The ideal for many just remains an idea. Asset Insignia is all about real experience of supreme rarity in each of its features. It's located in Kaloor, very much at the heart of the city. For many who desire an ideal spot to celebrate life, this is just a dream come true.





Features & Highlights

The idea of a designer villa is built up on its unique features. Asset Insignia is born with 14 specialties that make it so different an experience. It's every square foot an unrivalled marvel of perfection. Loaded with exotic brands, the Asset Insignia reflects the true passion and spirit of a contemporary life lived in all its glory. Own the rare signature of Kingly stature.



Project Details

Project Name	:	ASSET INSIGNIA
Developer	:	Asset Homes Pvt Ltd
Location	:	Kaloor, Kochi
Google Coordinates	:	10° 00' 27" N, 76° 17' 8" E
Site Address	:	Sanskriti lane, near Saraswathi Vidyanikethan Public School, Kaloor, Ernakulam
Site Details	:	Sy Nos 209/6,7,8,9A - Kanayannur Taluk, Ernakulam District
Total extent of land	:	4697 m2 (116 cents)
Altitude	:	5 m above MSL
Project Type	:	Gated Community Project (Villa)
Theme	:	Private Villas
Recreational Area	:	10 cents
Road Area	:	21 cents
Area for villas	:	85 cents
No of Villas	:	14
Architect	:	Ar. Vishagh Joseph, Building Designs - Kochi
Structural Consultant	:	Structural Solutions, Bengaluru
Project Sanctioned Number	:	EY P1-232/12 from Cochin Corporation dated 27/7/13

Washrooms

Description	Brand
EWC	: Kohler / Duravit / Queo / equivalent.
Wash Basin	: Kohler / Duravit / Queo / equivalent
Concealed Flush Tank	: Grohe / Gebrüt
Wall Plate	: Grohe / Gebrüt
Wall mixer	: Grohe / Kohler
Health Faucet (ABS Coating)	: Grohe / Kohler
Angle Valve 1/2"	: Grohe / Kohler

Powder Room

EWC	: Roca / Duravit / Queo / equivalent
Consealed Flush Tank	: Grohe / Gebrüt
Wall Plate	: Grohe / Gebrüt
Health Faucet	: Grohe / Jaquar
Angle Valve 1/2"	: Grohe / Jaquar
Wash Basin	: Roca / Duravit / Queo / equivalent
Bottle Trap	: Jaquar or equivalent

Flooring

Bedroom Floor Tiles	: Asian / RAK / Somany Premium or equivalent vitrified tiles or Laminated Wooden Flooring Quick Step / Pergo
Living & Dining Floor	: High quality Imported Marble
Balcony & sit out	: Natural Stone / Vitrified / Rustic Tiles Asian / RAK / Somany Premium or equivalent
Toilet Floor Tile	: Asian / RAK / Somany Premium / equivalent Tiles.
Toilet Wall Tile (glazed)	: Asian / RAK / Somany Premium / equivalent Tiles & water proof wall paper.

Doors/ Windows

Main Door	: Full Jamb Covered Teak Wood frames with architrave. Designed Teak wood shutter.
Inside Door & Toilet Door	: Full Jamb Hard wood frame with factory made door shutter. Kelachandra/Jackson or equivalent
Windows	: UPVC windows without grills and glass break sensors for front elevation windows and other windows with M.S grills.
Main Door lock	: Yale/Godrej or equivalent.
Hinges	: Yale Ball bearing heavy duty hinges
Magnetic catcher	: Spider
Door eye	: Magnum
Safety Chain	: Magnum
Internal Door lock	: Yale/Godrej or equivalent
Toilet Door baby latch	: Yale/Godrej or equivalent.
Tower bolt	: Yale

Kitchen

Kitchen Floor	: Somany Premium / Nitco / Asian
Kitchen Sink	: Franke / Nirali
Sink Cock	: Grohe / Jaquar
Cockroach Trap	: Chilly
Waste Coupling	: Chilly
Bottle Trap	: Jaquar or equivalent

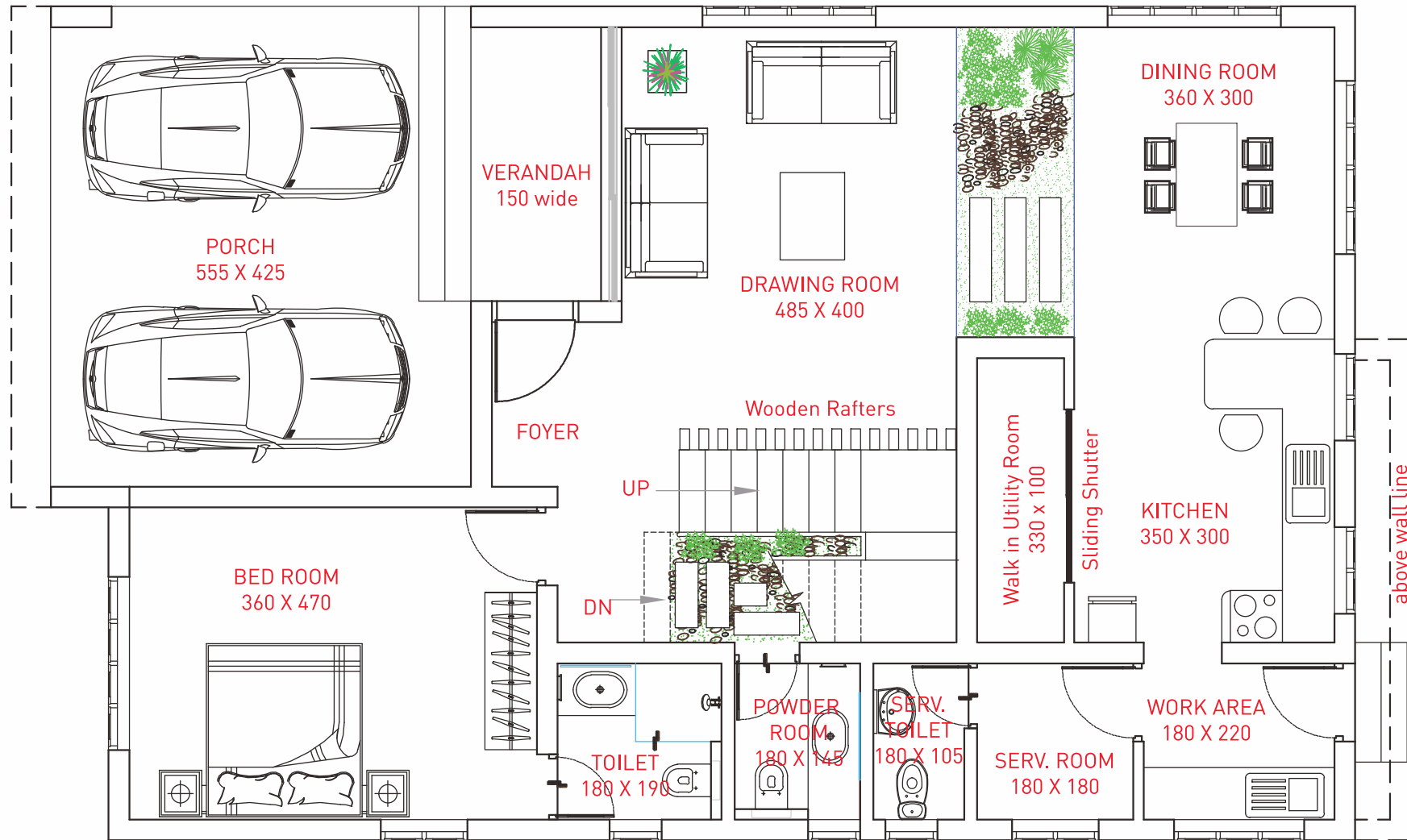
Electrical

Distribution Board	: Schneider / Legrand / Havells or equivalent
MCB	: Legrand / Schneider / Havells
Switches	: Legrand / Schneider / Havells

Paint

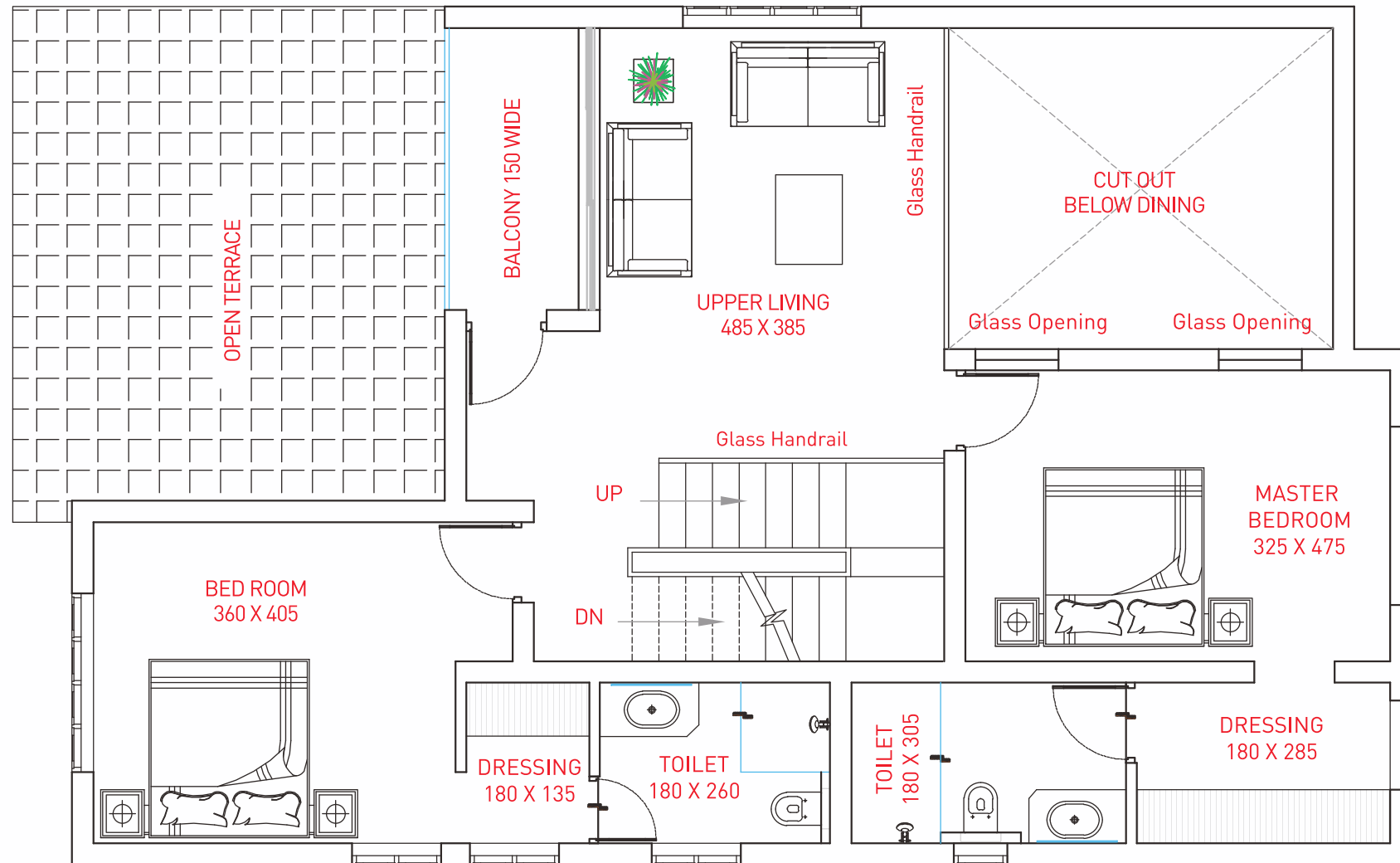
Internal Putty	: Birla White/Berger
Emulsion	: Jotun / Asian
Exterior Emulsion	: Jotun / Asian
Enamel	: Jotun / Asian

Floor Plan Type - A



Ground Floor Plan - 1530 sft.

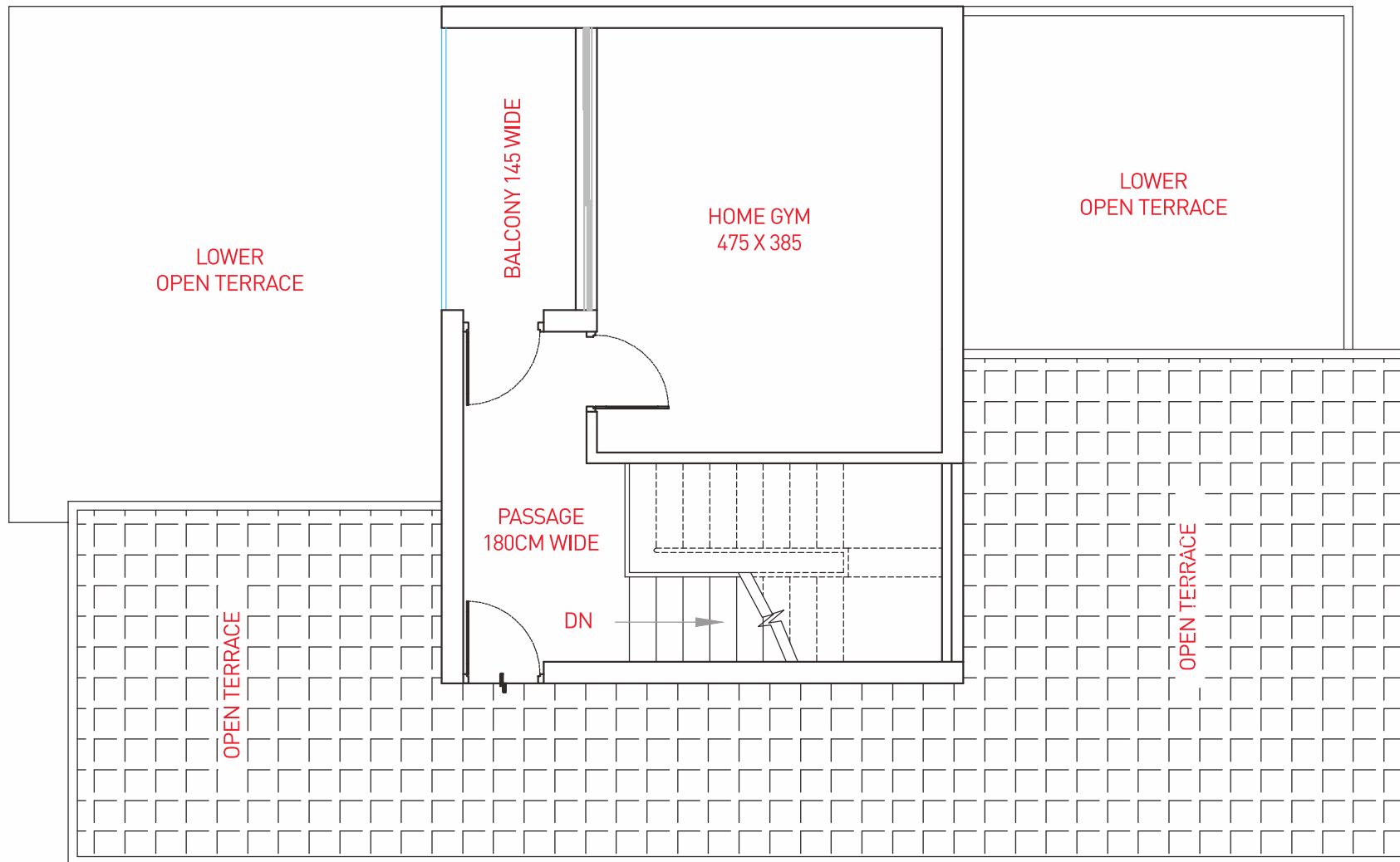
Floor Plan Type - A



First Floor Plan - 1110 sq. ft.



Floor Plan Type - A



Second Floor Plan - 476 sft.

Kerala's Most Awarded Builder

As an award winning builder of national and international reputation for its innovative architectural designs and signature quality construction with time-bound delivery, Asset Homes has carved an enviable niche for itself in the realty map of Kerala. This mark of trust built over the years on the solid values of quality, contemporariness and timeliness make every project of Asset Homes preciously desirable. Come, create an asset for a life time!



CIDC VISHWAKARMA
AWARD 2014



BEST BUILDER
AWARD 2013



EXCELLENCE IN
REAL ESTATE 2013, UK



CRISIL STAR RATED PROJECTS



CREDAI

REAL ESTATE AWARDS 2012

Nominated
Best Residential Project
of India



realty
EXCELLENCE AWARDS
2011

FOR 'INDIA'S YOUNG
ACHIEVER OF THE YEAR'



realty
EXCELLENCE AWARDS
2010

FOR 'INDIA'S EMERGING
DEVELOPER OF THE YEAR'



CNBC AWAAZ - CRISIL - CREDAI
REAL ESTATE AWARDS 2010
for
'INDIA'S MOST
INNOVATIVE PROJECT'



ROTARY INTERNATIONAL
DISTRICT 3201
VOCATIONAL EXCELLENCE
AWARD 2009-10



KALOOR, KOCHI



The responsible builder

Kochi | Thiruvananthapuram | Kottayam | Kannur
Thrissur | Kozhikode | Kollam

www.assethomes.in



Corporate Office

G-129, 28/34 A,
Panampilly Nagar,
Kochi - 682 036

Tel: 0484 6456474,

Mob: 98464 99999

E-mail: enquiry@assethomes.in

Thiruvananthapuram Office

No. 48, Kowdiar Gardens,
Golf Links Road, Kowdiar
Thiruvananthapuram - 695 003

Tel: 0471 3071499,

Mob: 99460 99999

Email: tvmsales@assethomes.in

Kottayam Office

XVIII / 700, IPC Philadelphia,
Kanjikuzhy, Muttambalam P.O.
Kottayam - 686 004

Tel: 0481 2575696,

Mob: 99465 99999

Email: kottayam@assethomes.in

Kannur Office

Near Payyambalam Park,
Payyambalam (PO),
Kannur - 670 001

Tel: 0497 2767079,

Mob: 97457 99999

Email: kannur@assethomes.in

Thrissur Office

Vinayaka Square, " Pulari"
Thiruvambadi Road,
Poonkunnam
Trichur - 680 002

Mob: 89430 99999

Email: thrissur@assethomes.in



www.facebook.com/AssetHomesOfficial

Contents of this brochure is not part of any legal offer and are subject to change. *organic BPS*