

FLOURISHING
CITY.
REFRESHING
LIFE.

ASSET
PATIO 
Luxury Townhouses, Cheranalloor, Edappally

 **ASSET HOMES**
The responsible builder



WINNER OF MANY AWARDS. AND HEARTS.

Asset Patio comes to you from Asset Homes, the award winning builder with a trackrecord of delivering homes on time. An accomplishment fuelled by exceptional teamwork, unwavering dedication to work and hundred percent commitment to the customer. Little wonder why Asset Homes has picked up many awards on its way and won many discerning hearts.



The First
Completed Crsil
7 star rated
project in Kerala




ROTARY INTERNATIONAL
DISTRICT 3201
VOCATIONAL EXCELLENCE
AWARD 2009-10



**CNBC AWAZ - CRISIL - CREDAI
REAL ESTATE AWARDS 2010**
for
**'INDIA'S MOST
INNOVATIVE PROJECT'**



**realty
EXCELLENCE AWARDS
2010**
**FOR 'INDIA'S EMERGING
DEVELOPER OF THE YEAR'**



**realty
EXCELLENCE AWARDS
2011**
**FOR 'INDIA'S YOUNG
ACHIEVER OF THE YEAR'**

34th
PROJECT

ASSET
PATIO
Luxury Townhomes. Creative. Identity

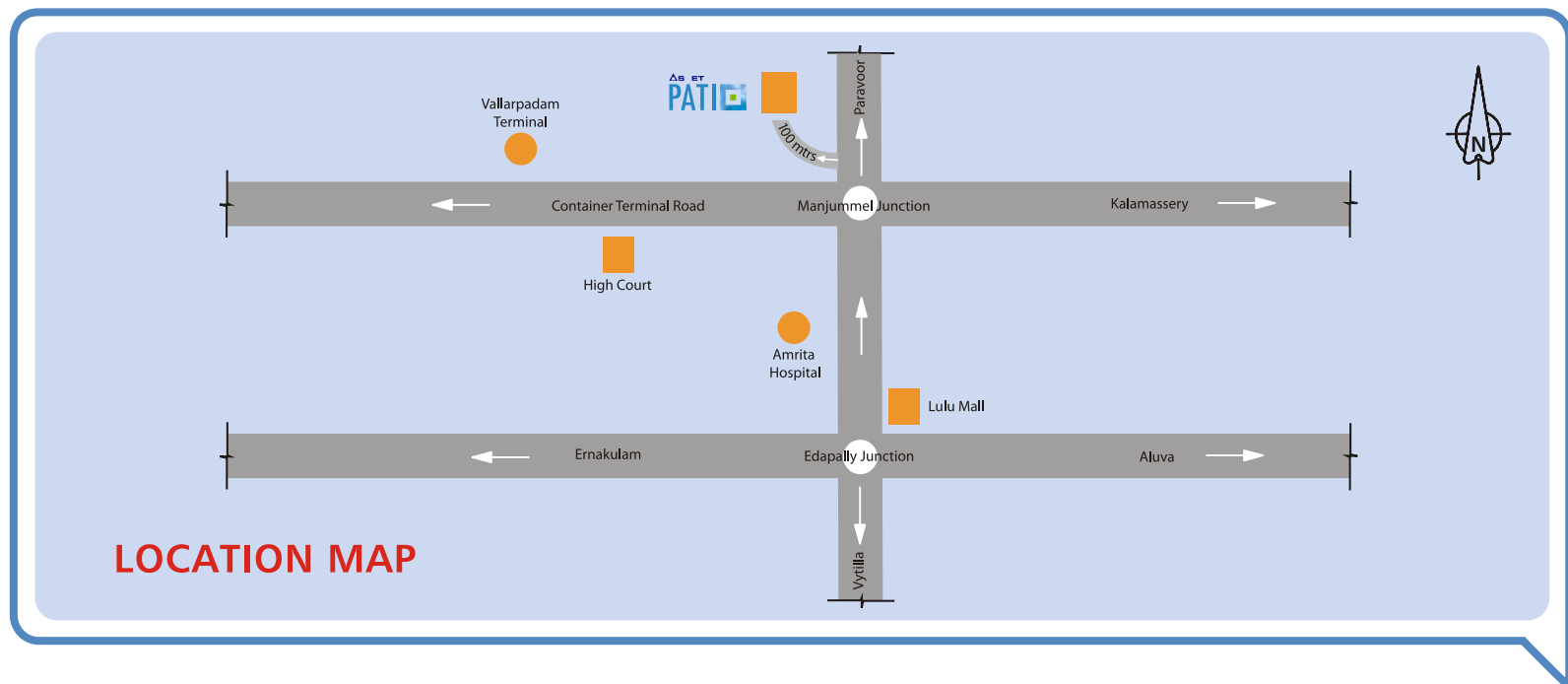


AT THE JUNCTION OF CONVENIENCE

The Vallarpadam Terminal, Smart City, Infopark, Lulu Mall, Amrita Hospital, International Airport...

Which better place to invest in than Kochi? The city is booming with opportunities. The economy is flourishing. And this is where you will see your life blooming.

Asset Patio is located in Cheranalloor, giving you easy access to Edappally and the N.H. Bypass Junction. Your home is perched conveniently close to Amrita Institute of Medical Sciences & Research Centre, Lulu Mall which is poised to be one of Asia's largest malls, Vallarpadam International Container Terminal, the International Airport, renowned Schools and Colleges, places of worship and many other places of entertainment.





Asset Patio - Courtyard view

IN THE CENTRE OF COMFORTS

The design of Asset Patio draws inspiration from the legendary townhouses of England. There are 35 apartments in all, spread out in ground plus 3 floors and a basement for car parking. Each well designed apartment is spacious, offering plenty of room for air, light, and thoughts to flow. Step out of your home and you are in the aesthetically built centre courtyard. It is the ideal place to spend your leisurely evenings, catch up with friends, curl up with a book or to simply laze around admiring the beauty of your own courtyard.





FEATURES

Community Features

- Health club
- Children's play area
- Roof top Jacuzzi
- Steam and Sauna
- Open party area
- 2 Passenger lifts
- Servant's toilet, Janitor's room, Drivers restroom
- 24hrs. Security / Water / Power
- Maintenance on call
- Grocery store





FEATURES

Digital Features

- Broadband internet connection
- Digital cable TV connection
- Intercom facility

Technical Features

- Metal strip reinforcement on all joints to avoid cracks
- Sharp edges avoided on all fabrications to provide safety, especially for children
- Rubber fenders on parking area pillars to avoid damage to vehicles

Eco Features

- Vegetable garden
- Rain water harvesting
- Courtyard with landscaped garden
- CREDAI clean city waste treatment plant



TYPE -1

FLAT E



TYPE 1 - A,B,C,D,FH&I
2 BHK APARTMENT
SUPER BUILT-UP AREA : 1190 Sq.Ft

TYPE -2
FLAT C



TYPE 2 - E,G&J
3 BHK APARTMENT
SUPER BUILT-UP AREA : 1560 Sq.Ft

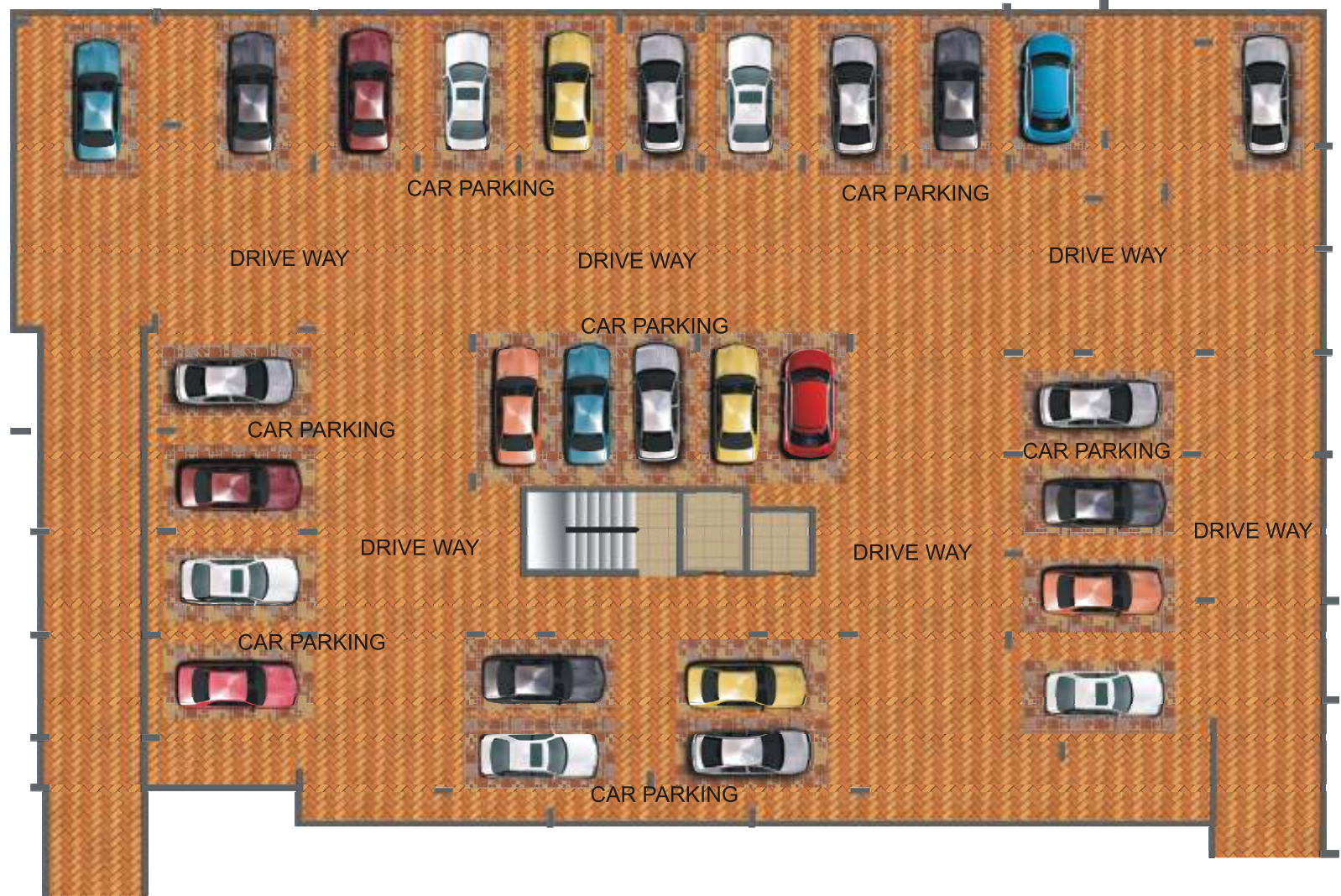
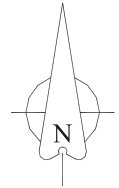
GROUND FLOOR PLAN



TYPICAL FLOOR PLAN



BASEMENT PLAN



SPECIFICATIONS

- **Foundation:** Raft foundation on required strata.
- **Structure:** RCC framed structure with solid cement blocks in fill walls.
- **Flooring:** High quality vitrified tiles for the entire apartment, with vitrified skirting. Entrance lobby in granite/ vitrified. Staircase & common areas will be of granite/ vitrified flooring.
Glazed tiles: Glazed tiles up to a height of 6' on toilet walls. Glazed tiles up to a height of 2' above the kitchen counter.
- **Kitchen:** Granite kitchen counter, single bowl stainless steel sinks with drain board and tap. Provision for exhaust fan also provided.
- **Toilet fittings:** Sparkling white sanitary ware including European water closet and a wash basin. Good quality chromium plated taps, mixer, shower and towel rods.
- **Hardware:** Best quality hardware.
- **Doors:** Decorative paneled entrance door in teak wood. Molded / flush doors for bedrooms and toilets.



SPECIFICATIONS

- **Windows:** Fully glazed powder coated aluminum windows with M. S. grills
- **Painting:** Putty finished emulsion paint for internal walls and enamel paint for doors and window grills. External walls will be emulsion painted.
- **Water supply:** KWA water supply through sump and overhead tank in the kitchen subject to rules and regulations of KWA. Ground water supply from open well/bore well.
- **Electricity supply:** Concealed copper wiring. Adequate light points, fan points, 5 amps and 15 amps points, etc. with independent meters for each flat. Modular type switches. Provision for 3 phase electrical supply. Telephone conduit point in living room.
- **Earthing:** 1/18 copper wire shall be used for earthing using the loop system. Earth Leakage Circuit Breaker and MCB shall be provided in each apartment. Lightning arrester and earth pit will be provided with separate earth pit for the elevators.

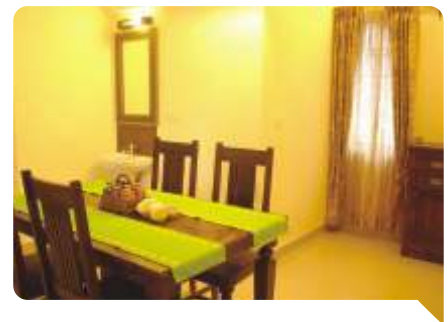


ASSET CARE, WHEN YOUR HOME NEEDS A LITTLE PAMPERING

Asset Care offers a comprehensive range of services from interior designing to property management, maintenance to renting out of the apartments and so on. Asset Care takes care of every aspect of home management and maintenance, making sure that everything is done in a smooth, professional and hassle-free manner. Recently, Asset Homes launched Asset Mission Hygiene, which provides trained manpower including all cleaning equipment and accessories to keep your apartment clean and hygienic. This service is totally free of cost. To get a comprehensive list of Asset Care services, please get in touch with our office.



INTERIOR DESIGNING • PROPERTY MANAGEMENT • MAINTENANCE • RENTAL SERVICES





Corporate Office

G-129, 28/34 A,
Panampilly Nagar,
Kochi - 682 036.

Tel: 0484 6456474

Mob: 98464 99999

E-mail: mail@asethomes.in

Thiruvananthapuram Office

No. 48, Kowdiar Gardens,
Golf Links Road, Kowdiar,
Thiruvananthapuram - 695 003.

Tel: 0471 3071499

Mob: 99460 99999

Email: tvmsales@asethomes.in

Kottayam Office

XVIII / 700, IPC Philadelphia,
Kanjikuzhy, Muttambalam P.O.,
Kottayam - 686 004.

Tel: 0481 2575696

Mob: 99465 99999

Email: assetktm@gmail.com

Kannur Office

Gita Bhavan,
P.M. Road, Thalap,
Kannur - 670 002.

Tel: 0497 2767079

Mob: 98461 42255

Email: kannur@asethomes.in

U.A.E. Office

Ruby Real Estate, (Ruby Cargo Group Co.),
No. 209, Al Khayal Bldg., Behind Mega Mall,
Al Wahda Street, Sharjah, U.A.E.

Tel: +971 - 6 - 5743322

Mob: +971 - 505376454

Email: globalsales@asethomes.in

www.asethomes.in