



Live in the Abode of Divinity

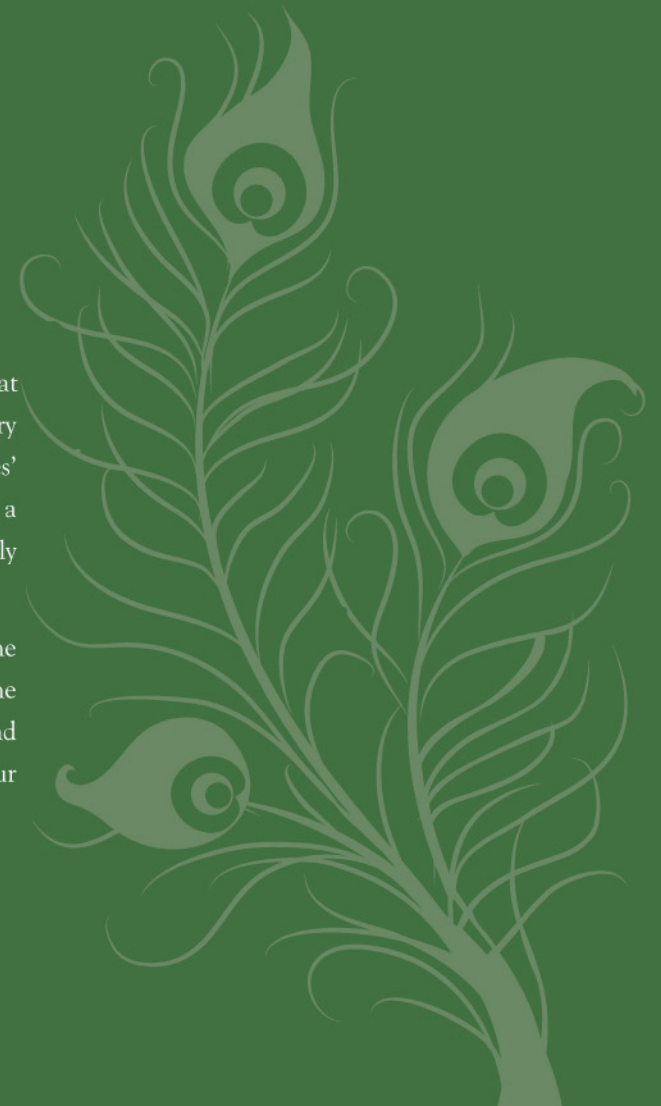


Abode of Ethereal Bliss.



The Asset Darshan, the new project of Asset Homes at Guruvayur is coming up in the vicinity of the legendary temple facing its East Nada. The project is Asset Homes' first one in Guruvayur and has been conceived with a view to help the devotees of the deity, to stay comfortably as and when they visit the temple.

The project has been created in such a way that it is the most ideal for the pilgrim to stay within the aura of the divine icon and to remain in perfect peace of mind and calmness. Own your priceless possession at Guruvayur and remain in pure transcendental bliss.





ASSET
DARSHAN
Furnished Apartments, Guruvayur

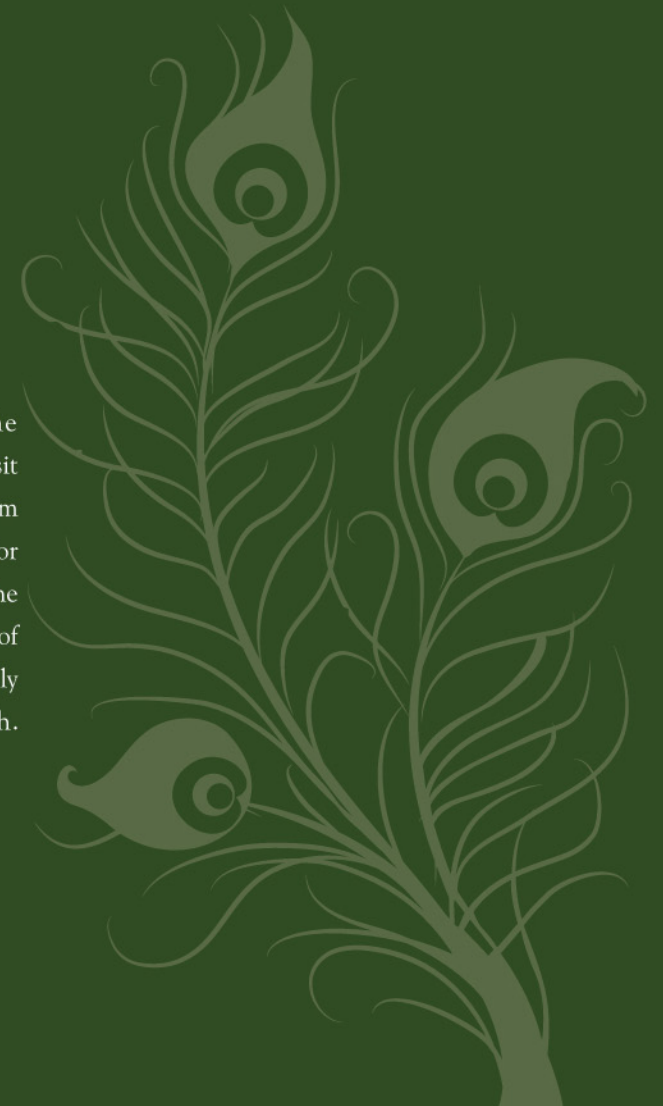
47th
Project



The Divine Architecture.



The apartments are designed exactly to suit the requirements of the tourists and the pilgrims who visit Guruvayur. The 1BHK apartments of sizes ranging from 550-650 sqft come with an attached kitchenette for private cooking and a common kitchen meant for all the inmates. Auspiciously situated close to the East Nada of Guruvayur Temple, Asset Darshan provides a gracefully comfortable stay for all the devotees of good faith. Come, own your share of beatific bounty!





Actual photograph of Asset Homes project.

Beatifically Furnished Living Space.



Actual photograph of Asset Homes project.

The construction and design of Asset Darshan is poetry unsurpassed. When you enter this beatifically furnished apartment you will be enticed by the elegant use of space and the supreme quality of furnishings. Each apartment comes with an LED TV, Sofa Set, Dining Table with Chairs, A/C in bed room, Kitchen Hob & Chimney, Mini Fridge and other facilities. With every amenities provided, you are sure to experience the joys of domesticity at the abode of Divinity.





LOCATION MAP

Invest In Good Faith.



For investors of good faith, Asset Darshan makes a supreme opportunity. Guruvayur being one of the prime temples of India, draws devotees from across the country. Located on the most auspicious precinct of the Temple, the East Nada, Asset Darshan is value for money at the same time bodes well for the future as an appreciating investment.

Come, make your investment in absolute faith and reap returns in abundance!



Features

DIGITAL FEATURES

- Broadband internet connection • Digital cable TV connection through STB • Intercom Facility

TECHNICAL FEATURES

- Metal strip reinforcement on all joints to avoid cracks • Sharp edges avoided on all fabrications to provide safety, especially for children • Rubber fenders on parking area pillars to avoid damage to vehicles

FURNISHING

- LED TV in Drawing Room • A/c in Bedroom • 4 Chair Dining Set • Base Kitchen Cabinet • Wardrobe in Bedroom
- Queen Size Cot and Mattress • Sofa set • Mini Fridge • Electrical fittings • Curtains • Kitchen Hob & Chimney
- Geysers in Toilet

COMMUNITY FEATURES

- Grand Entrance Lobby • Solar lit yard • Reading Room • Common Dining Room and Kitchen • Passenger Lift
- Servant's Toilet and Care Taker's Room



Actual photographs of Asset Homes projects.

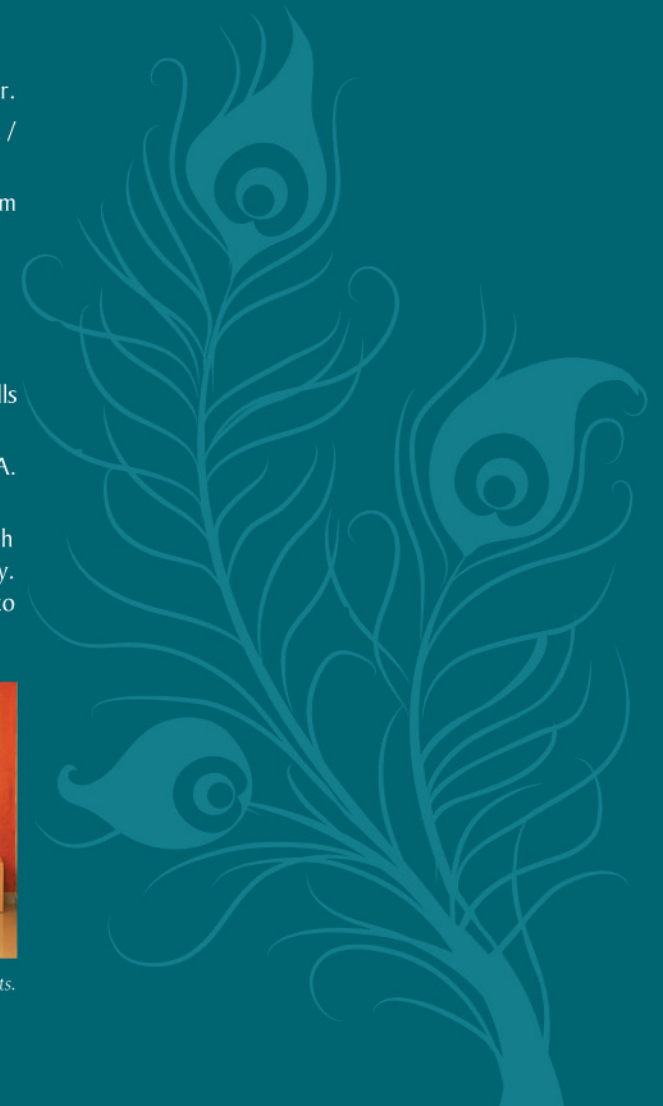


specifications

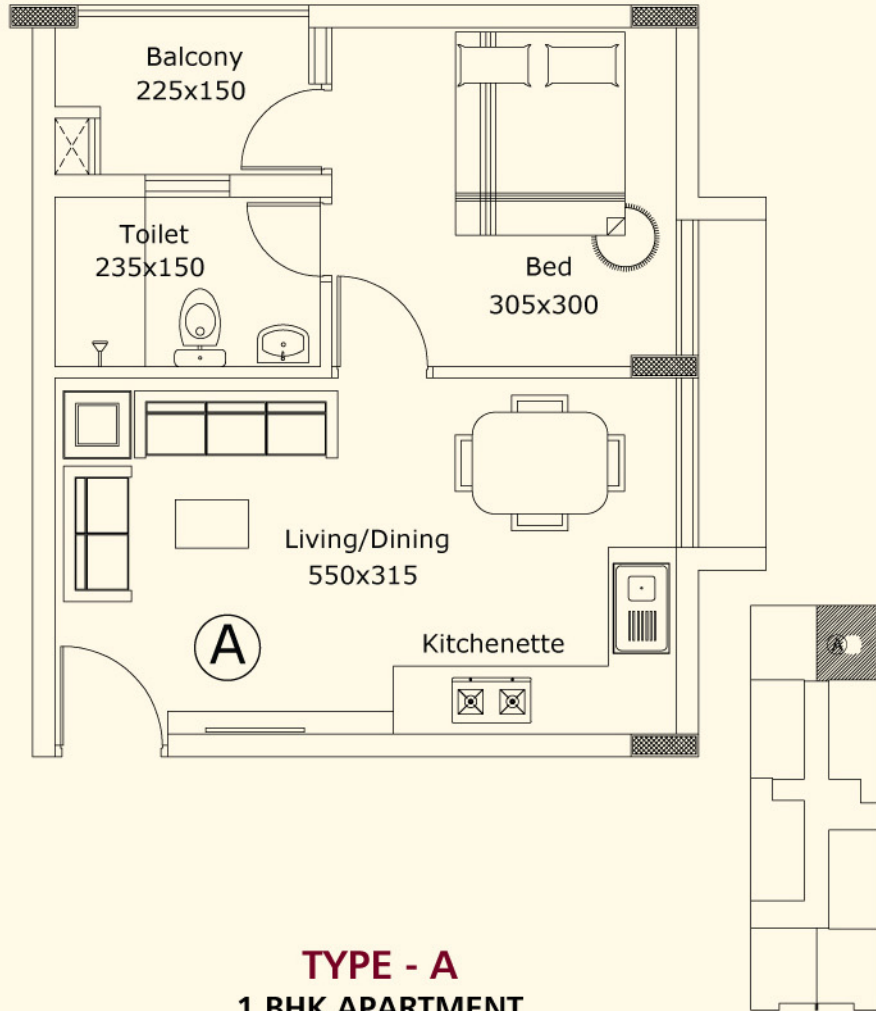
- FOUNDATION : Deep /shallow foundation as per structural details.
- STRUCTURE : Reinforced cement concrete frame with solid cement blocks in fill walls.
- ENTRANCE : Lobby, staircase and common areas will be of Granite or high quality Vitrified tile flooring. Entrance lobby in granite. Staircase & common areas will be of Granite / Vitrified flooring.
- FLOORING : High quality Vitrified tiles for the entire apartment, with Vitrified skirting.
- GLAZED TILES : Glazed tiles up to ceiling on toilet walls. Glazed tiles up to a height of 2' above the kitchen counter.
- KITCHEN : Granite kitchen counter, single bowl stainless steel sink with drain board and tap. Provision for exhaust fan / chimney & hob.
- TOILET FITTINGS : Grade I coloured sanitaryware including European water closet and wash basin. Good quality chromium plated taps, mixer, shower and towel rods.
- HARDWARE : Best quality hardware.
- DOORS : Decorative paneled entrance door in teak wood. Moulded / flush doors for bedrooms and toilets.
- WINDOWS : Fully glazed powder coated aluminum windows with M. S grills.
- PAINTING : Putty finished emulsion paint for internal walls and enamel paint for doors and window grills. External walls will be emulsion painted.
- WATER SUPPLY : KWA water supply through sump and overhead tank in the kitchen subject to rules and regulations of KWA. Ground water supply from open well / bore well.
- ELECTRICITY SUPPLY : Concealed copper wiring. Adequate light points, fan points, 5 amps and 15 amps points etc. with independent meters for each apartment. Modular type switches. Provision for 3 phase electrical supply. Provision for cable TV in living room. Telephone conduit point in living room. Generator backup to individual apartments & common areas with automatic change over switch.



Actual photographs of Asset Homes projects.

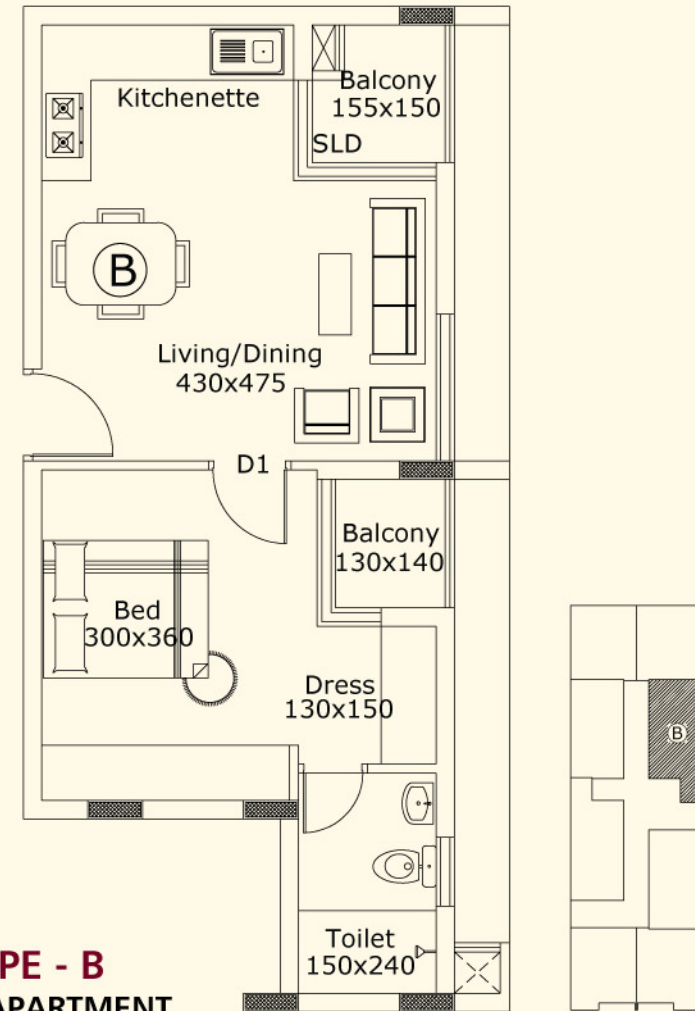


Floor Plans



TYPE - A
1 BHK APARTMENT
AREA - 555 Sq.ft.

1st to 6th Typical Floor



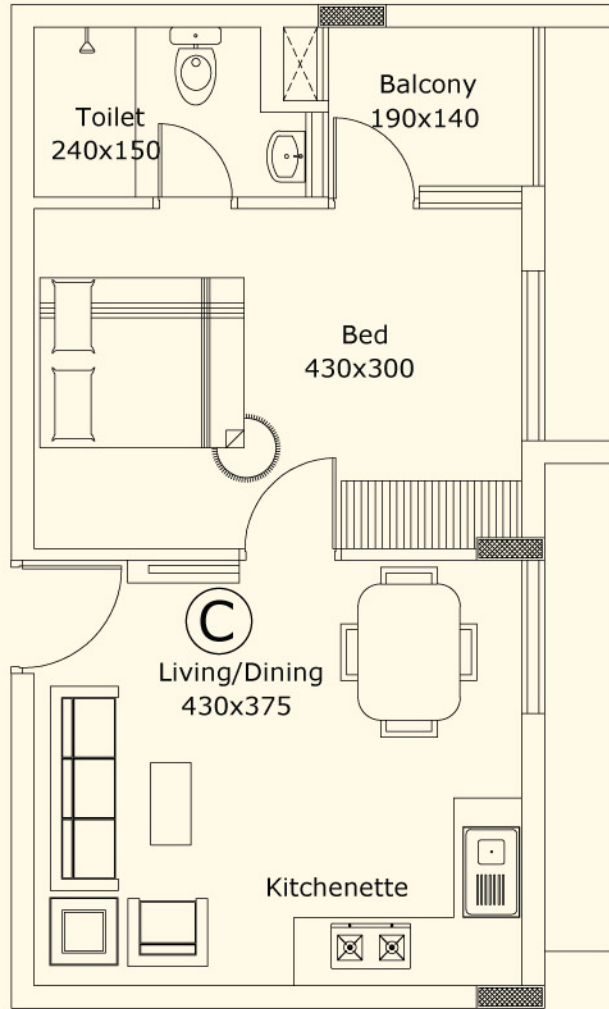
TYPE - B
1 BHK APARTMENT
AREA - 645 Sq.ft.

1st to 6th Typical Floor

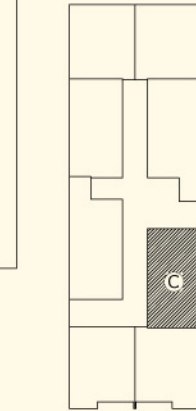
Floor Plans



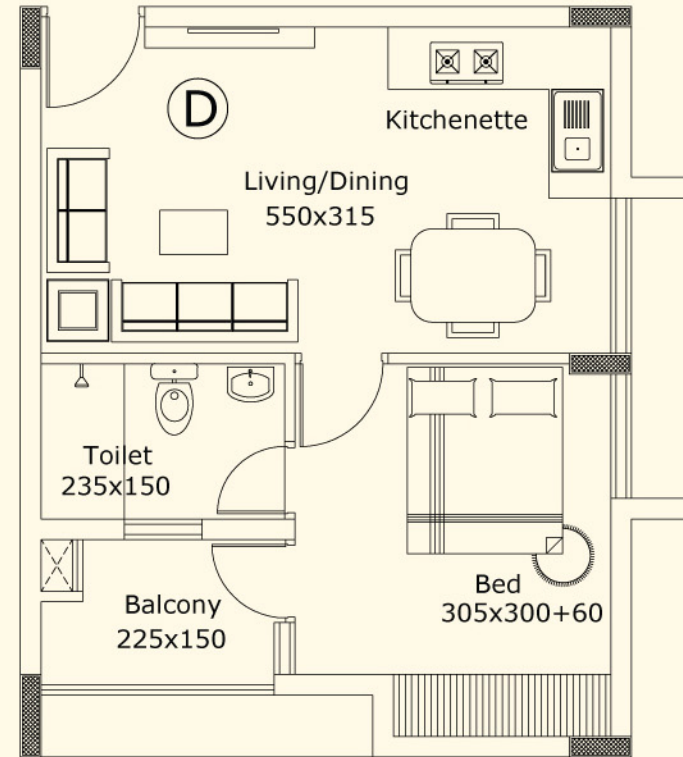
NORTH



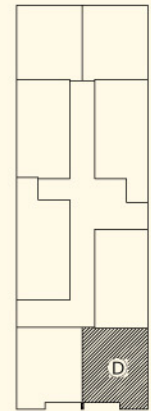
TYPE - C
1 BHK APARTMENT
AREA - 580 Sq.ft.



1st to 6th Typical Floor



TYPE - D
1 BHK APARTMENT
AREA - 580 Sq.ft.

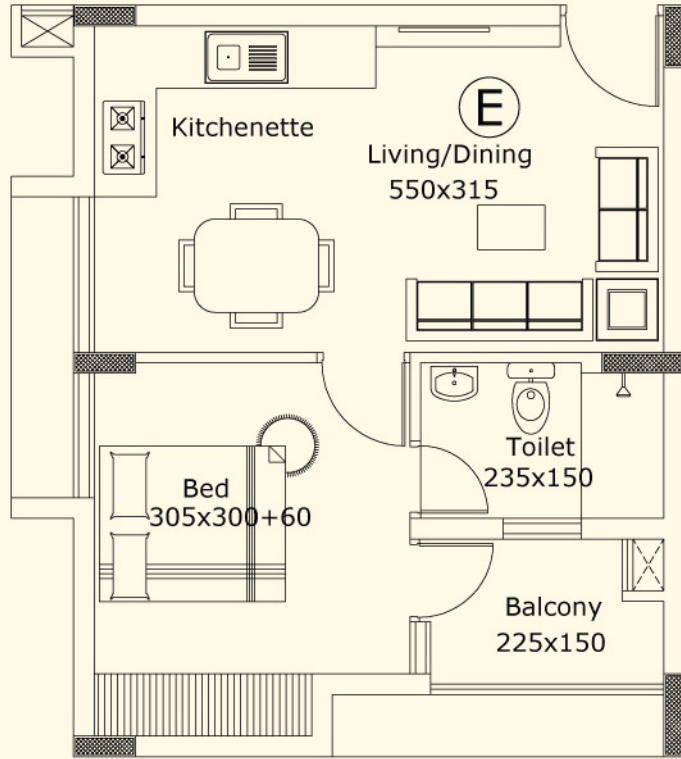


1st to 6th Typical Floor

Floor Plans

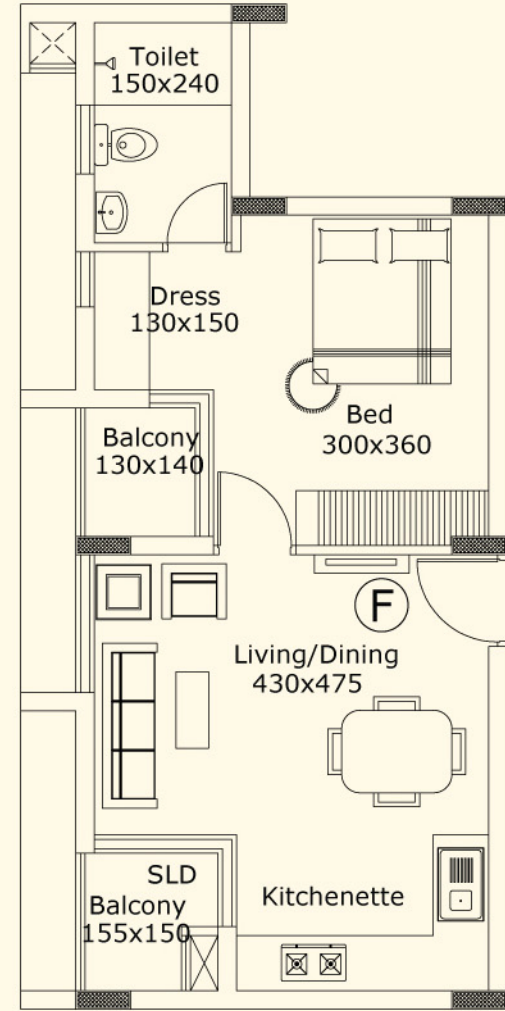


NORTH



TYPE - E
1 BHK APARTMENT
AREA - 580 Sq.ft.

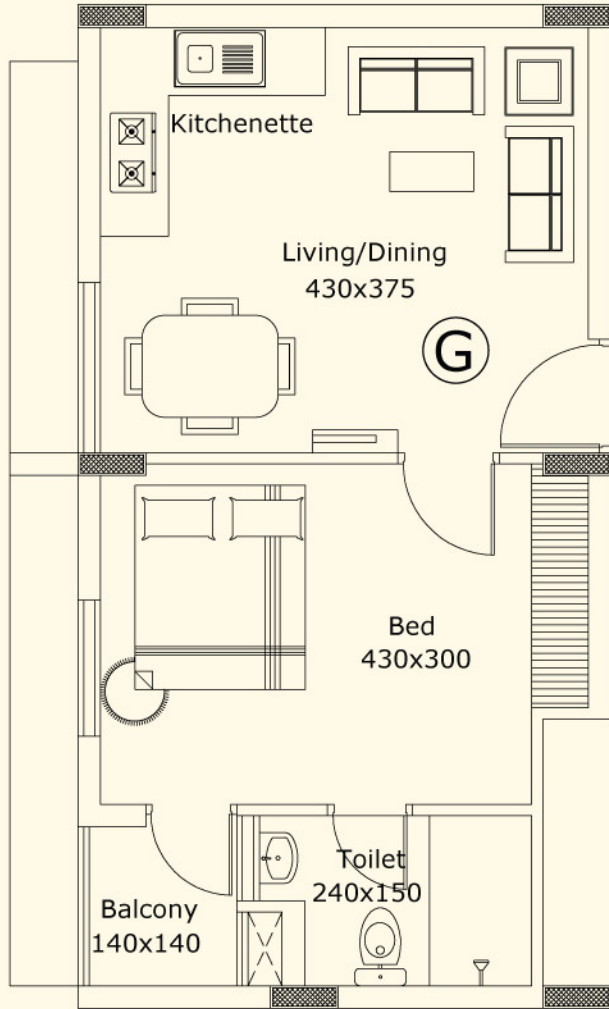
1st to 6th Typical Floor



TYPE - F
1 BHK APARTMENT
AREA - 645 Sq.ft.

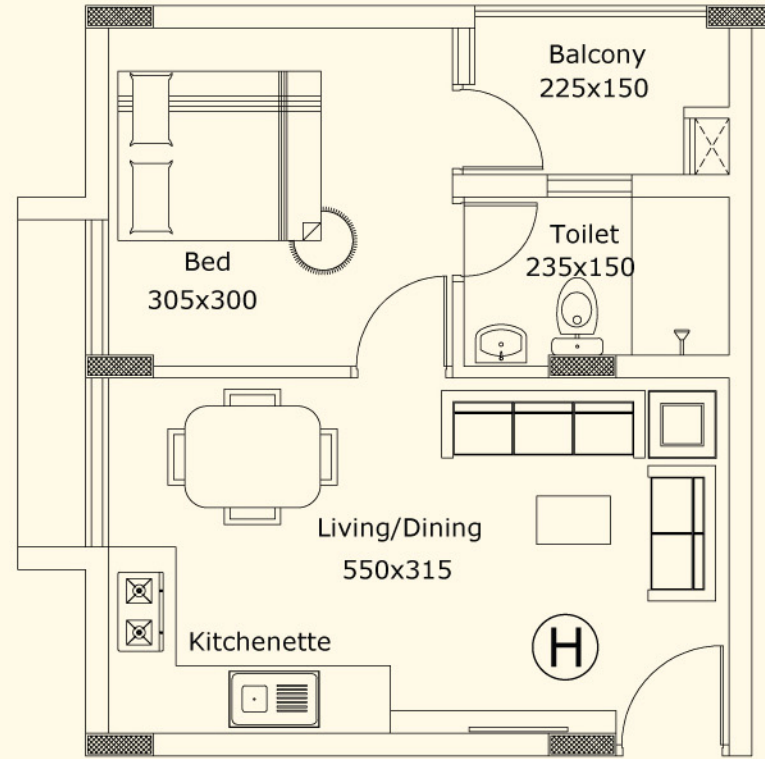
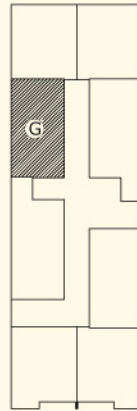
1st to 6th Typical Floor

Floor Plans



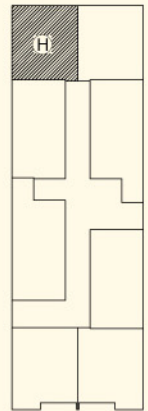
TYPE - G
1 BHK APARTMENT
AREA - 580 Sq.ft.

1st to 6th Typical Floor

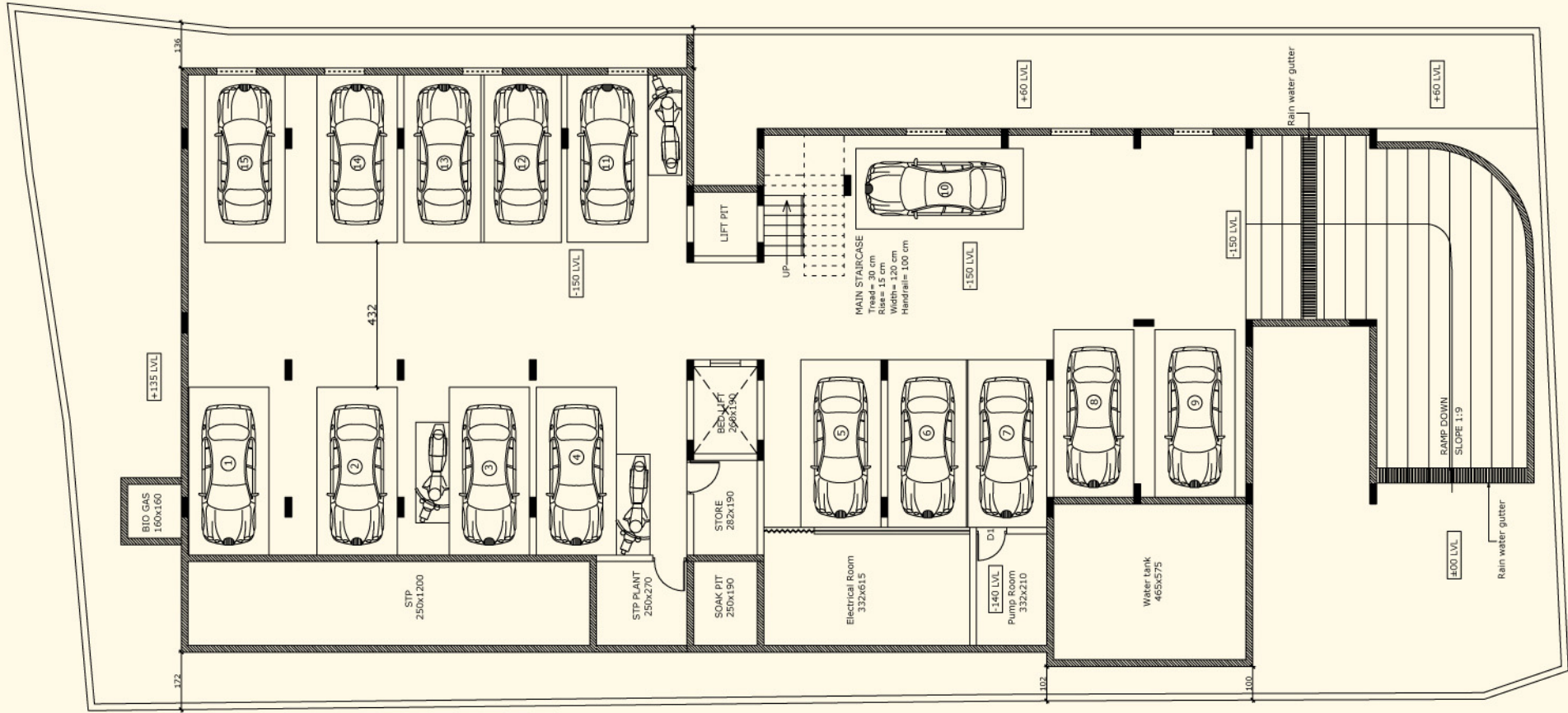


TYPE - H
1 BHK APARTMENT
AREA - 555 Sq.ft.

1st to 6th Typical Floor

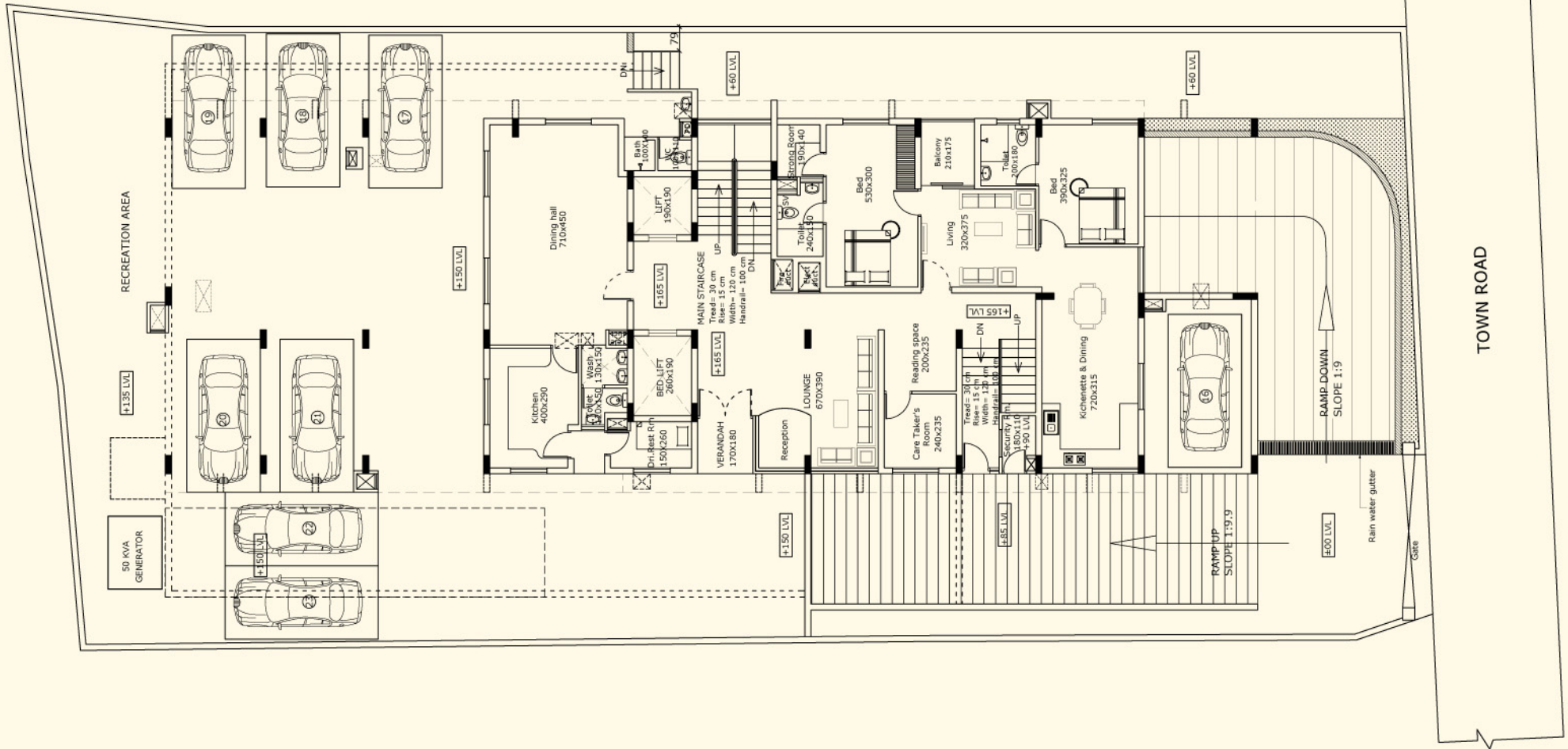


Basement Floor Plan



*Dimensions may vary slightly during construction. *Furniture and fixtures are indicative only. *All dimensions are in centimetres.

Ground Floor Plan



*Dimensions may vary slightly during construction. *Furniture and fixtures are indicative only. *All dimensions are in centimetres.

| DESCRIPTION | SALABLE AREA (In Sqft.) | | | | | | | | |
|-------------|-------------------------|---|-------|-------|-------|-------|-------|-------|-------|
| | | A | B | C | D | E | F | G | H |
| | 2 BHK | 1 BHK | 1 BHK | 1 BHK | 1 BHK | 1 BHK | 1 BHK | 1 BHK | 1 BHK |
| BASEMENT | PARKING + SERVICES | | | | | | | | |
| GROUND | 1265 | DINING HALL & KITCHEN + LOBBY + PARKING | | | | | | | |
| FIRST | | 555 | 645 | 580 | 580 | 580 | 645 | 580 | 555 |
| SECOND | | 555 | 645 | 580 | 580 | 580 | 645 | 580 | 555 |
| THIRD | | 555 | 645 | 580 | 580 | 580 | 645 | 580 | 555 |
| FORTH | | 555 | 645 | 580 | 580 | 580 | 645 | 580 | 555 |
| FIFTH | | 555 | 645 | 580 | 580 | 580 | 645 | 580 | 555 |
| SIXTH | | 555 | 645 | 580 | 580 | 580 | 645 | 580 | 555 |



Kerala's Most Awarded Builder

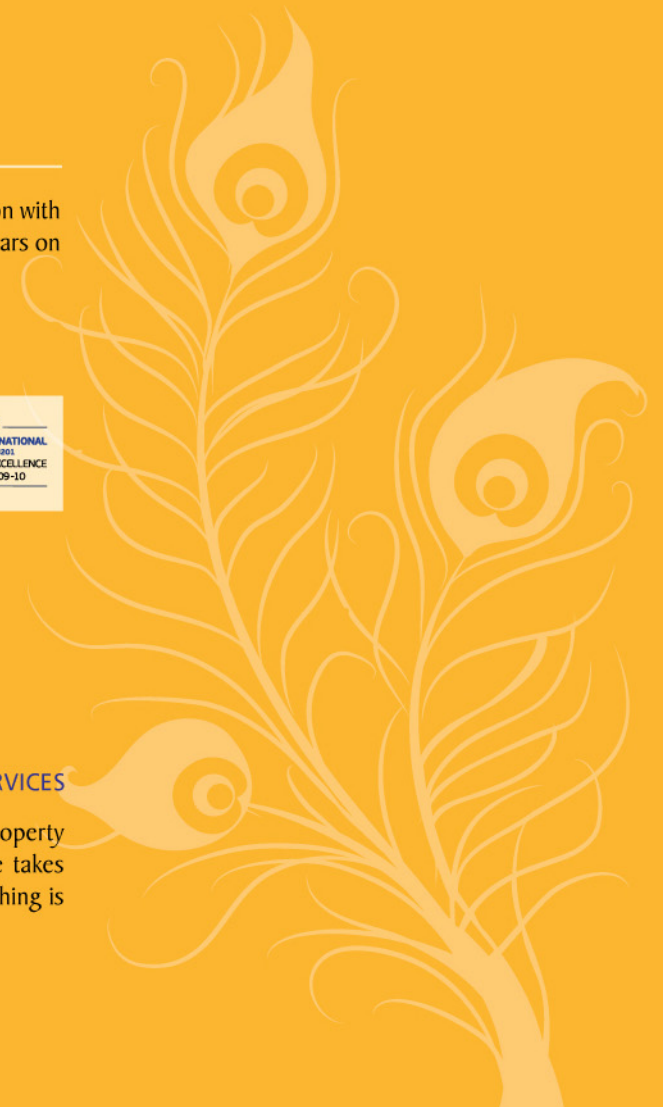
As an award winning builder of national and international repute for its innovative architectural designs and signature quality construction with time-bound delivery, Asset Homes has carved an envious niche for itself in the realty map of Kerala. This mark of trust built over the years on the solid values of quality, contemporariness and timeliness make every projects of Asset Homes preciously desirable.

Come, live in the abode of Divinity!



INTERIOR DESIGNING | PROPERTY MANAGEMENT | MAINTENANCE | RENTAL SERVICES

Asset Care offers a comprehensive range of services from interior designing to property management, maintenance to renting out of the apartments and so on. Asset Care takes care of every aspect of home management and maintenance, making sure that everything is done in a smooth, professional and hassle-free manner.





Kochi | Thiruvananthapuram | Kottayam | Kannur | Thrissur

www.assethomes.in



Corporate Office

G-129, 28/34 A,
Panampilly Nagar,
Kochi - 682 036

Tel: 0484 6456474,
Mob: 98464 99999
E-mail: enquiry@assethomes.in

Thiruvananthapuram Office

No. 48, Kowdiar Gardens,
Golf Links Road, Kowdiar
Thiruvananthapuram - 695 003

Tel: 0471 3071499,
Mob: 99460 99999
Email: tvmsales@assethomes.in

Kottayam Office

XVIII / 700, IPC Philadelphia,
Kanjikuzhy, Muttambalam P.O.
Kottayam - 686 004

Tel: 0481 2575696,
Mob: 99465 99999
Email: kottayam@assethomes.in

Kannur Office

Near Payyambalam Park,
Payyambalam (PO),
Kannur - 670 001

Tel: 0497 2767079,
Mob: 97457 99999
Email: kannur@assethomes.in

Thrissur Office

Asset Midtown,
Pookunnam,
Thrissur - 680 002

Mob: 89430 99999
Email: thrissur@assethomes.in



www.facebook.com/AssetHomesOfficial