

Where water colours your life!





Beauty, by nature. Poetry, by you.

"Periyaare, Periyaare, Parvatha Nirayude Panineere..." (Periyar, the fragrant essence of the mountains...) is the first line of the Malayalam song written by the famous poet Vayalar Ramavarma which has been eternalized by generations of Malayalis.

The River Periyar is dear to Malayalis for different reasons. It evokes nostalgia in old timers. Its pristine waters refresh memories. Its virgin beauty awes the young. It flows through the lyrics the Malayali hums. It inspires writers and poets. And now it's ready to inspire you.

Living at Silver Swan, Aluva, by the legendary River Periyar is a privilege brought to you by Asset Homes. Kerala's award winning builder with a solid reputation of building landmarks and delivering projects on time.



The First
Completed Crisil
7 star rated
project in Kerala

realty
EXCELLENCE AWARDS
2010
FOR 'INDIA'S EMERGING
DEVELOPER OF THE YEAR'



realty
EXCELLENCE AWARDS
2011
FOR 'INDIA'S YOUNG
ACHIEVER OF THE YEAR'



ROTARY INTERNATIONAL
DISTRICT 3201
VOCATIONAL EXCELLENCE
AWARD 2009-10





33rd
PROJECT

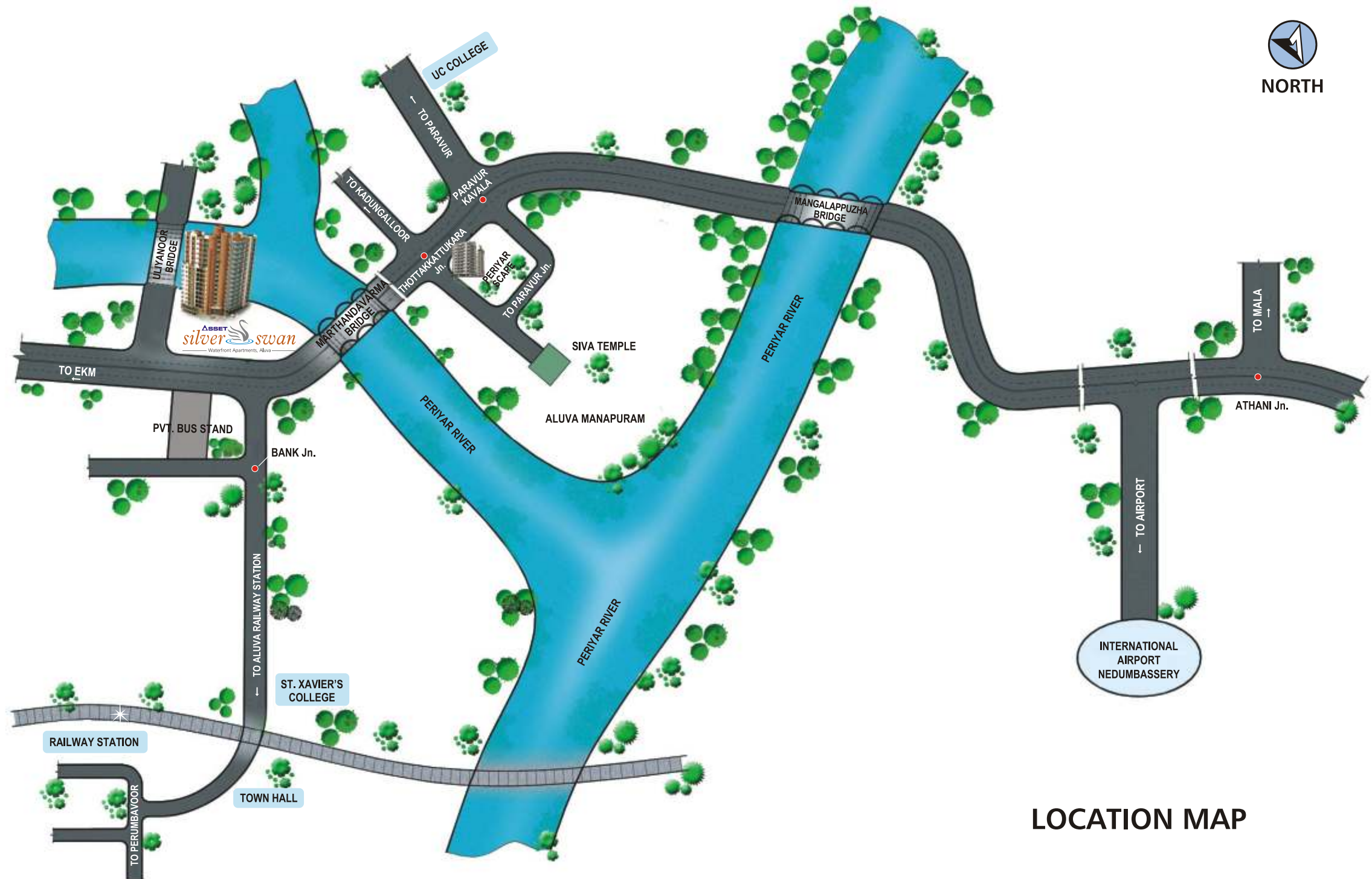


The art of inspired living.

Periyar (Malayalam: പെരിയാർ meaning: big river) is the longest river in Kerala and is also known as the lifeline of Kerala. It is not just a perennial river providing drinking water to several major towns and contributing a significant proportion of Kerala's electrical power, but also the source of inspiration for many poets and writers. Living by the River Periyar is living by inspiration.

Silver Swan is a waterfront project conceived to pamper you in every way. While the view of the River Periyar will have a soothing effect on you, the well-designed two and three bed apartments at Silver Swan will leave you spellbound. The project comprises a basement and 73 apartments spread across ground plus 16 floors. The modern amenities in store will keep you comfortable and the green open spaces around will keep you refreshed. Rest assured, you will stay inspired 24x7.





All roads lead to a comfortable life.

Aluva is a quaint little town blessed with natural beauty. The advantages of living here are plenty. The famous Shiva temple on the banks of the River Periyar draws devotees in thousands, especially during the Sivaratri festival. The Periyar meanders through the town majestically, lavishly bestowing beauty and quenching the thirst of the entire district. Silver Swan is located in the heart of Aluva, giving you easy access to every comfort needed to make life flow smoothly. Schools, hospitals, shopping malls, bus and railway stations are just a stone's throw away. The Cochin International Airport is just 12 kms away. And we are just a call away.





Features

Digital features

- Broadband internet connection
- Digital TV connection
- Video door phone

Technical features

- Wide balconies facing river on select flats
- Metal strip reinforcement on all joints to avoid cracks
- Sharp edges avoided on all fabrications to provide safety, especially for children
- Multi-level car parking
- Rubber fenders on parking area pillars to avoid damage to vehicles

Eco features

- Rain water harvesting





Features

Community features

- Swimming pool overlooking River Periyar
- Health club
- Children's play area
- Clubroom facing Periyar
- River bay party zone
- Angling point
- Passenger lifts - 2/3 nos
- Servant's toilet, janitor's room, driver's rest room
- Intercom facility
- 24hrs. Security / Water / Power
- Maintenance on call



FLAT A - 1865 sq.ft
Super built up area
* 1st to 9th floor



KEY PLAN

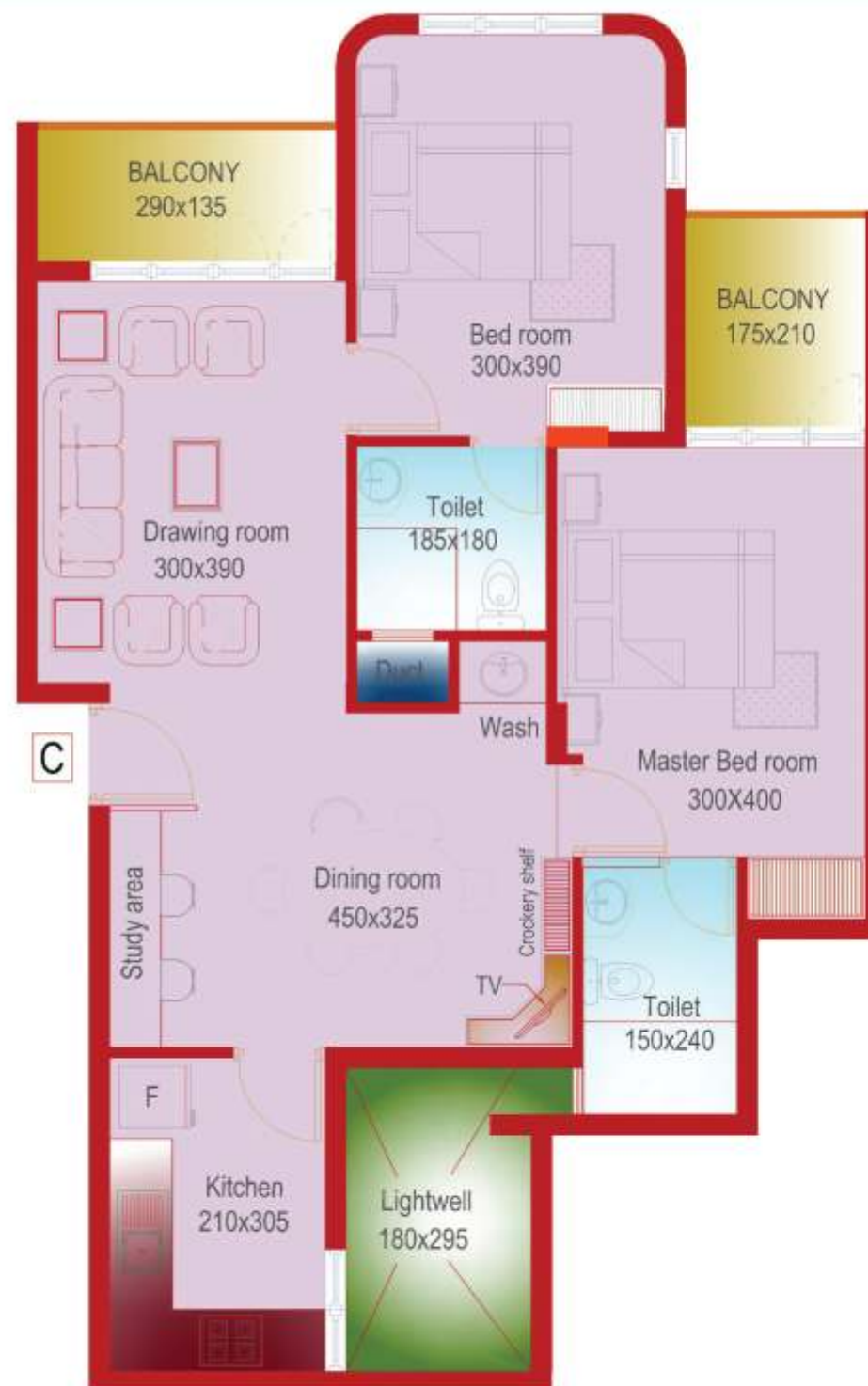
FLAT B - 1810 sq.ft
Super built up area
* 1st to 9th floor



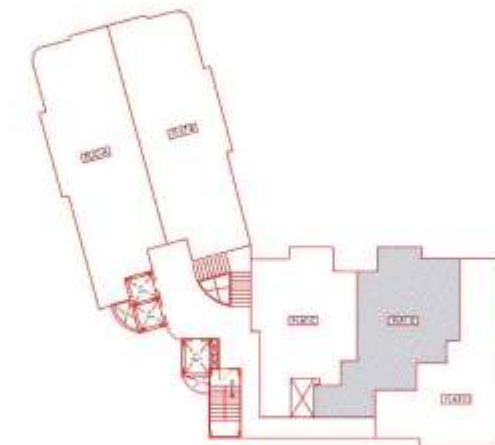
FLAT C - 1200 sq.ft
Super built up area
*1st to 16th floor



KEY PLAN



FLAT D - 1310 sq.ft
Super built up area
* 1st to 16th floor



KEY PLAN

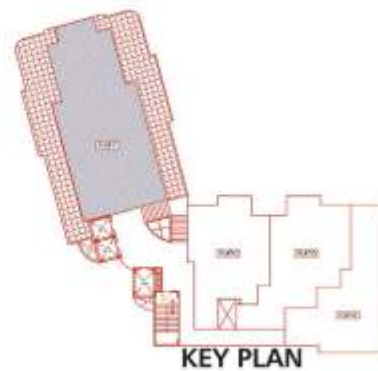
FLAT E - 1250 sq.ft
Super built up area
* 1st to 16th floor



KEY PLAN



FLAT F - 2150 sq.ft
Super built up area
* 10th to 16th floor



KEY PLAN





Specifications

Foundation	: Deep piles in direct mud-circulation method up to required strata with necessary pile caps.
Structure	: Reinforced cement concrete frame with solid cement blocks in fill walls.
Flooring	: High quality vitrified tiles for the entire apartment, with vitrified skirting. Entrance lobby in granite. Staircase & common areas will be of granite / vitrified flooring.
Glazed tiles	: Glazed tiles up to a height of 6' on toilet walls. Glazed tiles up to a height of 2' above the kitchen counter.
Kitchen	: Granite kitchen counter, single bowl stainless steel sink with drain board and tap. Provision for exhaust fan also provided.
Toilet fittings	: Sparkling white sanitary ware including European water closet and wash basin. Good quality chromium plated taps, mixer, and shower. Towel rods.
Hardware	: Best quality hardware.
Doors	: Decorative paneled entrance door in teak wood. Moulded / flush doors for bedrooms and toilets.
Windows	: Fully glazed powder coated aluminum windows with M.S. grills.
Painting	: Putty finished emulsion paint for internal walls and enamel paint for doors and window grills. External walls will be emulsion painted.
Water supply	: KWA water supply through sump and overhead tank in the kitchen subject to rules and regulations of KWA. Ground water supply from open well/bore well.
Electricity supply	: Concealed copper wiring. Adequate light points, fan points, 5 amps and 15 amps points, etc. with independent metres for each flat. Modular type switches. Provision for 3 phase electrical supply. Provision for cable TV and telephone conduit point in living room.



ASSET CARE, WHEN YOUR HOME NEEDS A LITTLE PAMPERING

Asset Care offers a comprehensive range of services from interior designing to property management, maintenance to renting out of the apartments and so on. Asset Care takes care of every aspect of home management and maintenance, making sure that everything is done in a smooth, professional and hassle-free manner. Recently, Asset Homes launched Asset Mission Hygiene, which provides trained manpower including all cleaning equipments and accessories to keep your apartment clean and hygienic. This service is totally free of cost. To get a comprehensive list of Asset Care services, please get in touch with our office.

Interior Designing ▲ Property Management ▲ Maintenance ▲ Rental Services





Corporate Office

G-129, 28/34 A,
Panampilly Nagar,
Kochi - 682 036.

Tel: 0484 6456474

Mob: 98464 99999

E-mail: mail@assethomes.in

Thiruvananthapuram Office

No. 48, Kowdiar Gardens,
Golf Links Road, Kowdiar,
Thiruvananthapuram - 695 003.

Tel: 0471 3071499

Mob: 99460 99999

Email: tvmsales@assethomes.in

Kottayam Office

XVIII / 700, IPC Philadelphia,
Kanjikuzhy, Muttambalam P.O.,
Kottayam - 686 004.

Tel: 0481 2575696

Mob: 99465 99999

Email: assetktm@gmail.com

Kannur Office

Gita Bhavan,
P.M. Road, Thalap,
Kannur - 670 002.

Tel: 0497 2767079

Mob: 98461 42255

Email: kannur@assethomes.in

U.A.E. Office

Ruby Real Estate, (Ruby Cargo Group Co.),
No. 209, Al Khayal Bldg., Behind Mega Mall,
Al Wahda Street, Sharjah, U.A.E.

Tel: +971 - 6 - 5743322

Mob: +971 - 505376454

Email: globalsales@assethomes.in

www.assethomes.in