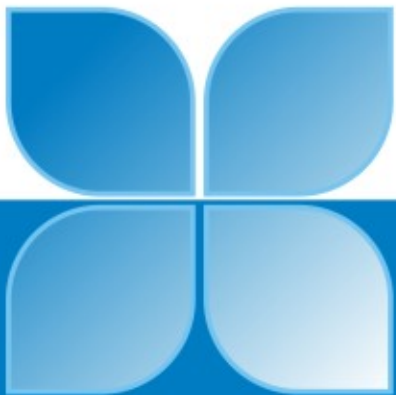




Mountain

Loft





Snowview Huts(Nainital)

THE PLEASURE OF SERVING...

RockLink groups is a pioneer real state company dealing in world class Residential Cottages, Villas and Apartment in Uttarakhand. In the short time span Rocklink have gained the successful experience of multiple prestigious project like **Mountain Pearl** (Flats at Sattal), **Mountain Pearl**(Cottages at Bhimtal), **Surbhi Vihar**(Residential colony at Rudrapur) and **Snowview Huts**(Yog Sadhana Kendra with Delux Huts Accommodation based on Eco Tourism at Nainital). We feel proud to introduce you all with our promising project "**Mountain Loft**", an **Apartment project** admist the divine green and heavenly Khurpatal Lake. We also assist buyers in purchasing Residential, commercial, agricultural and farm lands in Uttarakhand at best price.



The Lake of Happiness...



Mountain

Loft

THE SPEECH OF SILENCE...

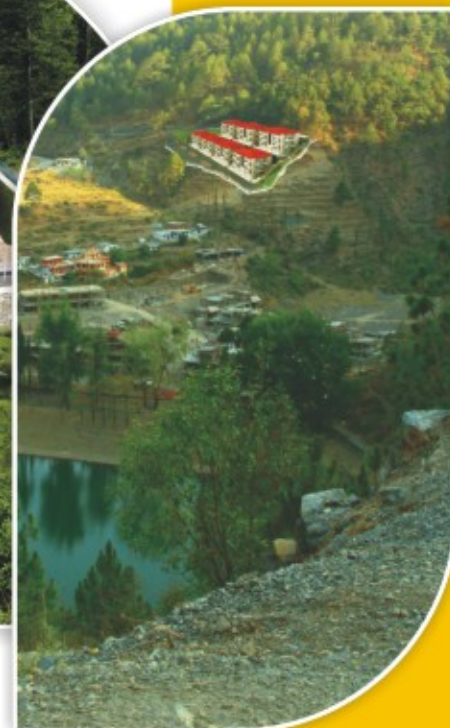
The scenic association of Mountain loft Apartments and the Khurpatal Lake is deeply Fascinating. With pleasant climate through out the year this place is indeed a dream destination for the dwellers. As the local population is fairly low, you will enjoy the toast of village life with the speech of silence. As the approach to Lake is highly invitational, which often gives us an impression of owning it along with Apartment.

Mountain
Loft

For the moments in peace



ROCKLINK HOMES
LIVING CLOSE TO NATURE



REJUVENATING THE SPIRITS...

The MOUNTAIN LOFT is located at Khurpatal, close to the bustling and popular hill station Nainital (just 12 Km) in Kumaon Himalaya. Echoing with the sounds of nature, a beautiful Lake, the back drop of dense pine forest, waterfall and many other wonderful places nearby, to watch, Khurpatal seems a secret heaven hidden in the hills. In short, dwelling in the Mountain Loft Apartments means rejuvenating your spirit....



The wonders around...

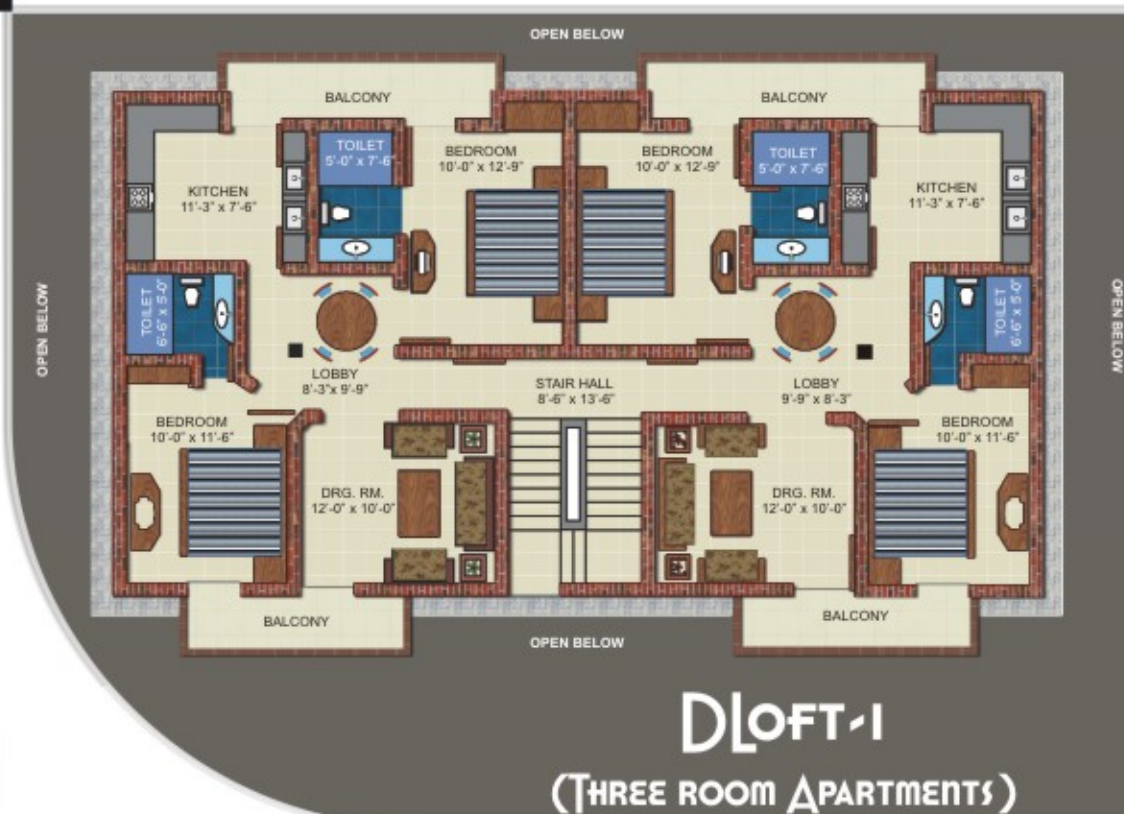


Mountain

Loft

THE EMERALD DELIGHT...

With pleasant climate and a beautiful lake with crystal clear water the whole location seems like a splendor. All the great places nearby will enrich your experience with the emerald delight. The Angling sites are enough to anchor you and the solitary moments you like to spend, the lush green forest is an ideal place for bird watching, the heavenly sunrise & sunset view with the divine hues everyday, will wrap you with the feeling of containment for your love for nature...



DLoft-1 (DETAILS)

Super Area: 830.88sqfts
Plinth. Area: 793.51sqfts
Floor Area: 674.48sqfts

Including:

- 3 Rooms
- 1 Kitchen
- 1 Lobby
- 2 Bathrooms
- 3 Balcony

A SPACE FOR LIFE TO SMILES...

The MOUNTAIN LOFT Apartments are modern & artistic definitions of space planning. It is designed keeping your life-style in consideration, while developing the core concept our emphasis was on both, the sufficiency of space as well as its utility with in a standard area of 830.88 sqfts . DLoft-1 row apartments are type one apartments, with 3rooms (1Bedroom with attached balcony & bathroom 1Bedroom with attached balcony and 1 Drawing room), Lobby, Kitchen, 2 Bathrooms and 3 Balcony for maximum directional views





A plan for your style

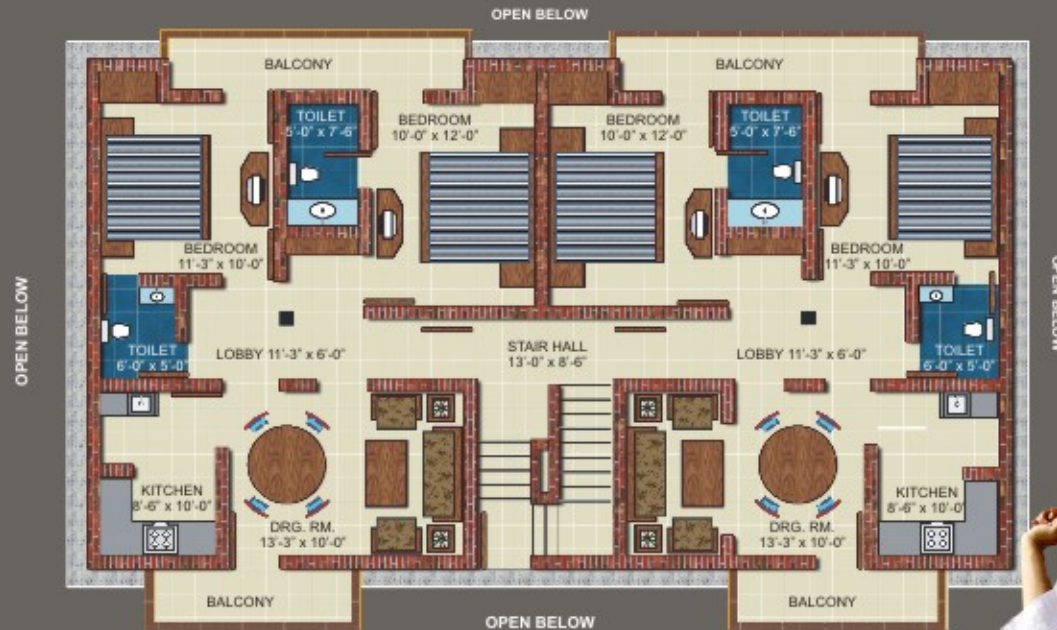


DLoft-1 (DETAILS)

Super Area: 830.88sqfts
Plinth. Area: 793.51sqfts
Floor Area: 674.48sqfts

Including:

- 3 Rooms
- 1 Kitchen
- 1 Lobby
- 2 Bathrooms
- 3 Balcony



DLoft-2 (THREE ROOM APARTMENTS)



THE STRETCH FOR HAPPINESS...

DLoft-2 row apartments are type two apartments, they are modern & artistic definitions of space planning and are well designed with functional utility as per your lifestyle. As DLoft-1, while developing the core concept our emphasis was on both, the sufficiency of space as well as its utility with in a standard area of 830.88 sqfts, with 3 Bedrooms (1 Bedroom with attached balcony & bathroom 1 Bedroom with attached balcony and 1 Drawing room with dinning space attached with Kitchen), Lobby, Kitchen, 2 Bathrooms and 3 Balcony for max directional views



A dream come true...



A SPACE FOR SHARING MEMORIES...

In the MOUNTAIN LOFT Apartments space can be gauged, as a well framed area, as per the utility of a family, for the various dimensions of life. The vacant space is going to act as vacuum for furnishing your dreams with furniture and objects. Its basically ready to use furnished space, wall enameled with paint, flooring as per functional requirement with vitrified, anti skid and vinyl tiles, Rooms with doors and windows. in short the Mountain Loft Apartments will provide you a space ready to weave your life with special and warm moments with lasting memories...





The touch of perfection...



STRUCTURE

R.C.C. framed earthquake resistant structure with the tie beam at foundation level. First class brick work insulated by RAT-TRAP joints.

ROOFING

Steel framed / Trusses with purlins covered by sloppy C.G.I. Roofing with P.V.C. gutters & down pipes. Wooden ceiling of IInd floor with good quality & design.

FINISH EXTERNAL

Plaster with good quality water resistant paint.

FINISH INTERNAL

Oil bounded distemper of high quality.

FLOORING

Utility area, Drawing / Dinning, Kitchen & Circulation area, High quality vitrified tiles. Bedroom wood texture high density vinyl . Toilet floors with anti-skid tiles.

DOORS / WINDOWS

Doors-Salwood chowkhats, Teakwood framed with teak ply panels with enamel paint. Windows-Salwood chowkhats, Powder coated Aluminum glazed windows.

PLUMBING

High density PPR pipes concealed in the walls for hot & cold water. Branded chrome fixtures, white ceramic plates form basins & hanging toilet seats with water ceacate, walls upto 7'-10' craded with designer tiles. Sewer disposal pipe high density polymer.

ELECTRICITY

I.S.I approved suitable, proper wires in high grade P.V.C. condute concealed wiring, properly designed elimination with branded pendentants wall switches of branded manufactures.



Mountain
Loft

THE IMPORTANCE OF YOUR SATISFACTION...

ROCKLINK PROPERTY & DEVELOPERS Pvt. Ltd is a leader in providing value-added construction services to our customers by using quality Raw material and techniques throughout the construction process. Our pledge is to establish lasting relationships with our customers by exceeding their expectations and gaining their trust through exceptional quality material used. As its in our ethics to lay Importance to your satisfaction...

Mountain Loft

Glimpse of site...



ROCKLINK HOMES
LIVING CLOSE TO NATURE



MAKING YOUR WORLD

We understand the preciousness of the Dream you have to own a "HOME", thus we are striving hard in adding colors to it, making it turn more beautiful than what you have really dreamt of. We are shaping the "MOUNTAIN" with warmth of your imagination and raising the "Lofts" to your delight. The construction is proceeding at good pace, we have already cross half our way in making your world. You can have glimpse of the sweetest wish you have in your heart and you will surely find us weaving them come true for you...



R LINK



The lofts for happiness

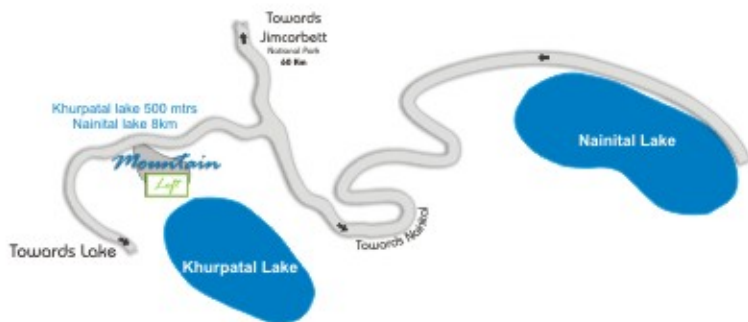
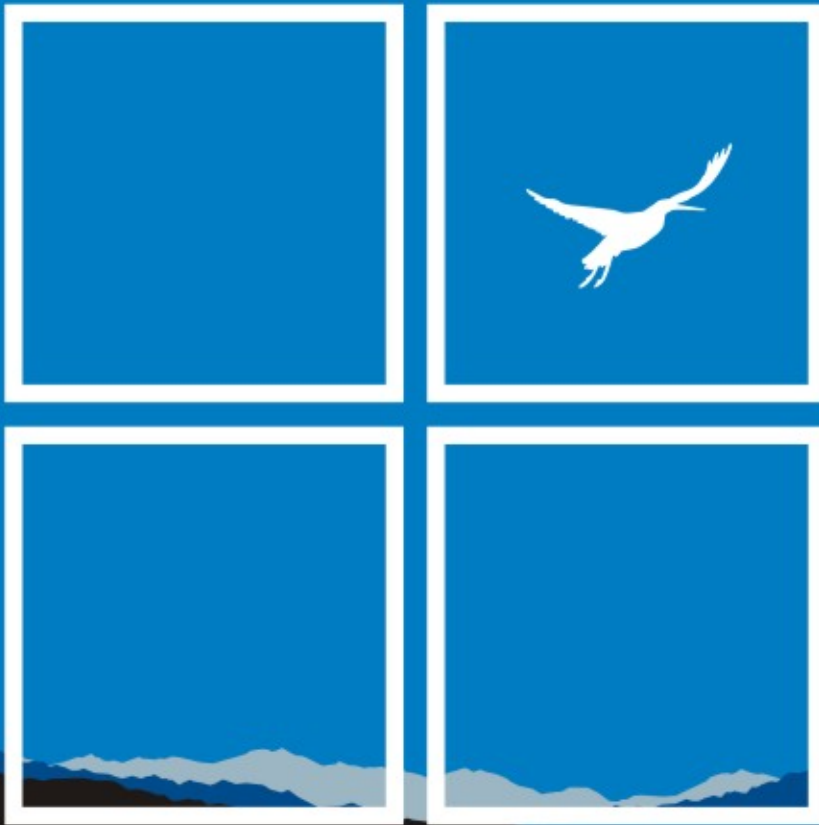


Mountain

Loft

THE STRETCH FOR HAPPINESS...

It's your time to hold a dwelling space in heaven. To make a choice and feel special for what you own. As a step ahead in search of smile today is going to fetch you back happiness for your upcoming life with your family & friends ...



ROCKLINK PROPERTY & DEVELOPERS Pvt. Ltd.

Head office:

G-4, KMVN Complex,
Kaladhungi Chauraha, Haldwani (Ntl)

Contact No.s:

+91 9319471276/ +91 9412085226
+91 9412986488/ +91 9412086028

Branchoffice:

LGF 83-Ansal Fortune Arcade,
Sector-18 Noida- 201301, UP

Contact No.s:

+91 01204157796/ +91 9891376445
+91 9971513119/ +91 9911169887

web site: www.rocklink.in; e-mail id: rocklinkproperty@gmail.com/ info@rocklink.in

