

An exceptional living experience



Architectural Strength-
AR. VIPIN CHAUHAN



Site: Sankhedi, Near E-8 Extension, Kolar Road, Bhopal
Corp. Office: E-2/21, Kamdhenu Towers, Arera Colony, Opposite Habibganj, Railway Station, Bhopal - 16.
Ph.: +91 755 2464975, 2469920 Mobile: +91 90390 10082, 90390 56497

DISCLAIMER - In the interest of the continual developments in design and quality of construction, the Developer reserves all rights to make any changes in the scheme, including technical specifications, designs, planning and layout in any stage and all purchasers shall abide by such changes. - Changes/ alterations of any nature, including the elevations, exterior colour scheme of the villas or any other change affecting the overall design concept & outlook of the scheme are strictly NOT PERMITTED during or after the completion of the scheme. The brochure is intended only to convey the essential design and technical features of the scheme and shall not be construed to form part of the legal document.



Life Extraordinaire

In a world where a mad rush marks the order of any day, finding the right dwellings is for sure a daunting task. On one hand where we seldom find the time for ourselves, on the other our worries are doubled when we get into our cramped and stuffy home after a long, tiring day.

The call of the hour is a home which spells comfort, creativity and luxury coupled with prices that suit ones pocket. And we the Ultimate Group understand just that, and as part of an innovative effort present a brand new concept "Creative living spaces" to you.

As you read these lines, this new concept is taking shape.





Welcome to the high living

Just stepping into the grand world of Ultimate, you can see for yourself what creative lifestyle is all about. 3 BHK Villas that spell luxury, facilities that offer you comfort and a lifestyle that eases out all the anxiety when you step inside your abode.



Club Ultimate

Your very own lifestyle den



An epitome in luxury lifestyle, catering to your physical, mental and social aspects Club Ultimate is made keeping in stride with today's fast paced world where fitness and relaxation have become a necessity for quality living. The Club Ultimate is not restricted only to the residents and is open for you and your guests offering lifestyle amenities.

GYMNASIUM | PARTY HALL | INDOOR GAMES
POOL TABLE | CHESS | CAROM | CARD ROOM





High life calling

Ultimate is fully integrated with amenities that are thoughtfully designed to give you the ultimate pleasure of living. Enjoy the high life and add up to your living standards.

LANDSCAPING | JOGGING TRACK | PAVILIONS | CHILDREN PLAY AREA | BADMINTON COURT
SIT OUTS FOR SENIOR CITIZENS | 100% POWER BACK UP IN COMMON AREAS



DAISY VILLA - 3 BHK



Ground Floor Plan

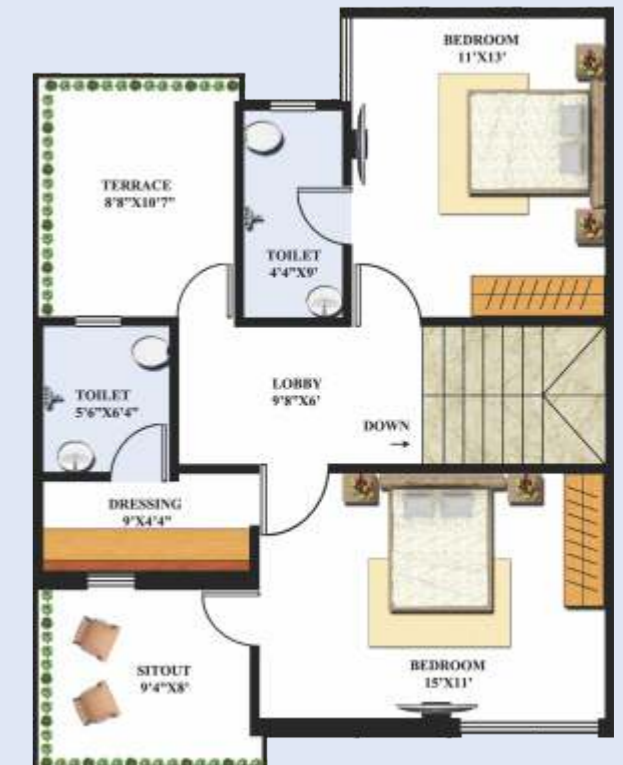


First Floor Plan

LILY VILLA - 3 BHK



Ground Floor Plan



First Floor Plan

Plot Size	21' X 42'
Area	882 Sq.Ft.
Built-up Area	1360 Sq.Ft.

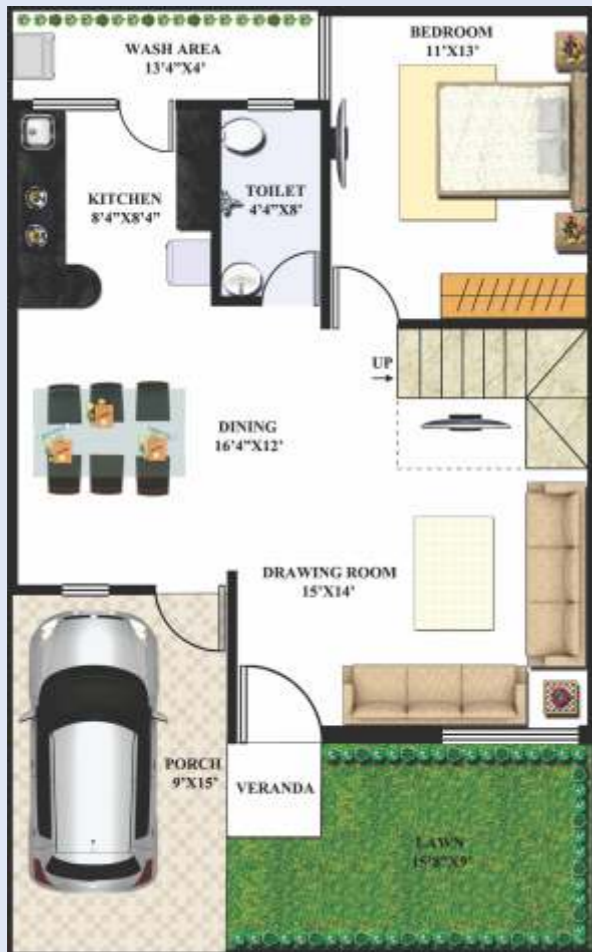


Plot Size	25' X 37'6"
Area	937 Sq.Ft.
Built-up Area	1505 Sq.Ft.

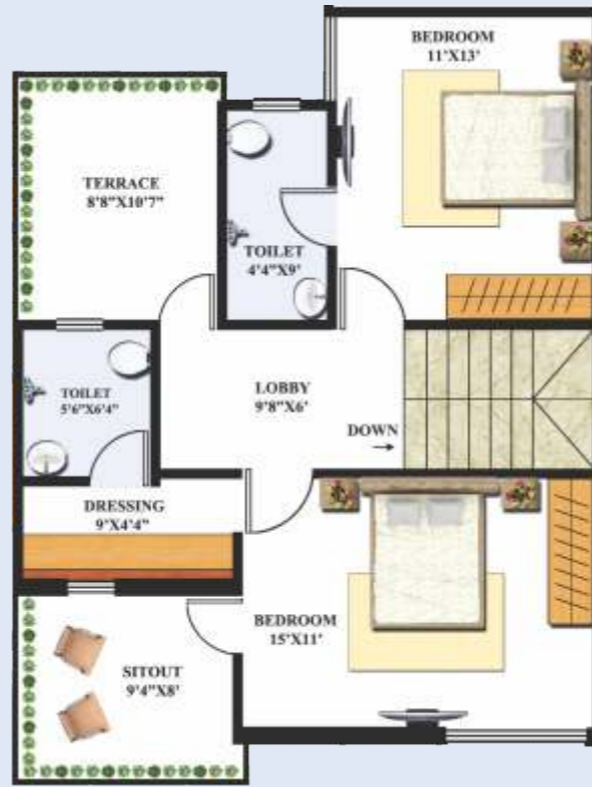


IRIS VILLA - 3 BHK

Plot Size	25' X 40'
Area	1000 Sq.Ft.
Built-up Area	1525 Sq.Ft.



Ground Floor Plan



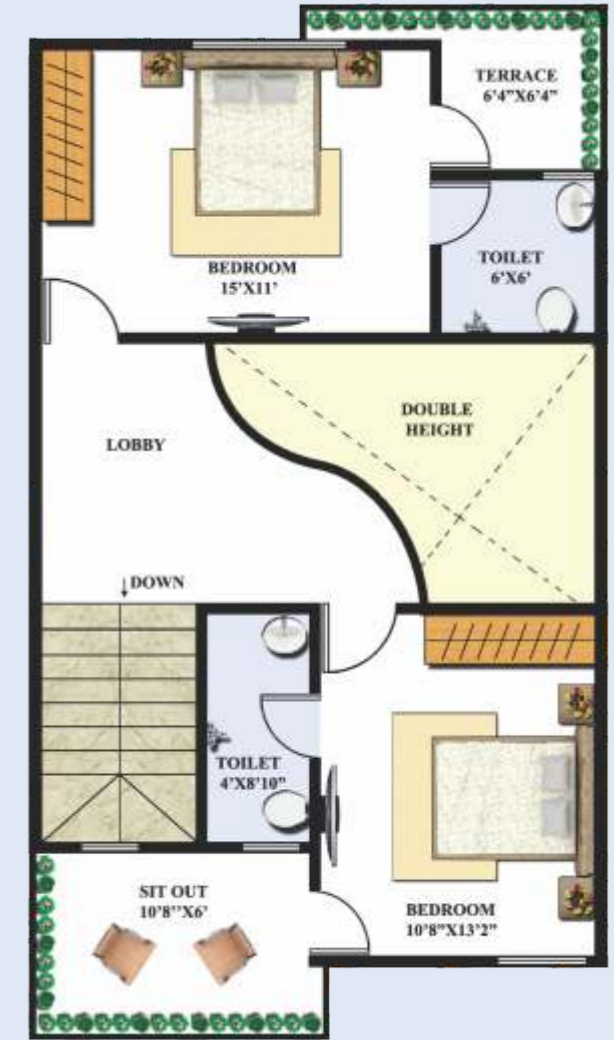
First Floor Plan

LOTUS VILLA - 3 BHK

Plot Size	22' X 47'6"
Area	1045 Sq.Ft.
Built-up Area	1550 Sq.Ft.



Ground Floor Plan



First Floor Plan

ASTER VILLA - 3 BHK



Ground Floor Plan



First Floor Plan

Plot Size	22' X 50'
Area	1100 Sq.Ft.
Built-up Area	1560 Sq.Ft.



MASTER LAYOUT PLAN



Specifications

- Structure : Earthquake resistant, R.C.C. framed structure
- Wall : First class Brick work
- Flooring : Vitrified tiles in drawing, dining and all bedrooms. Anti-skid tiles in porch & backyard
- Toilet : Designer tiles up to 7' door height matching, sanitary chrome plated fitting
- Sanitary & Plumbing : Good quality designer sanitary-ware for spotless and sparkling toilets, high-quality Jaquar co. taps/equivalent
- Kitchen : Granite platform with steel sink, glazed tiles up to 2' height above the platform
- Doors : Masonite Doors with Dewas section, aluminium hardware fitting
- Windows : Powder Coated three track Aluminium window with SS Mosquito Net & MS Grill
- Electrification Fitting : Modular electrical switches
- Wiring : Concealed fire-retardant copper wiring with security through MCB's
- Water Supply : Adequate water supply with 750 liters individual overhead tank
- Elevation : Beautiful elevation with attractive features
- External Painting : External Walls painted with weather coated Burger Brand/equivalent
- Internal Painting : All internal walls including roof shall be painted by Acrylic washable distemper
- T.V./Tel. Points : Concealed T.V./Tel. Points in Drawing & Master bedroom



Complete innovation

The Ultimate Group has always been into innovation and growth, and our name has been synonymous to real estate development in reality. Our driving force has been a competent team coupled with the guidance and leadership of a wonderful management group. We all together make the "Ultimate Group", what we stand for, and a name to reckon when it comes to real estate.



Ultimate Plaza- I



Ultimate Plaza- II

Creative living at Ultimate Imperial Villas

