

Master Plan



Location Map



LOCATED IN THE HEART OF NEW CHENNAI

- Unihomes 2, is adjacent to Uniworld City, Nallambakkam is well connected to the rest of the city with the OMR on one side and the GST road on the other.
- In close proximity to the IT Corridor, Siruseri SIPCOT Park (a 1000 acres IT Park).
- Adjacent to all upcoming developments like IIIT DM & Sports University
- 5 minutes from the Vellore Institute of Technology Campus on the Vandalur - Kelambakkam road.
- Health care centre, commercial & shopping complexes, education facilities and much more in the near vicinity.

About Unitech

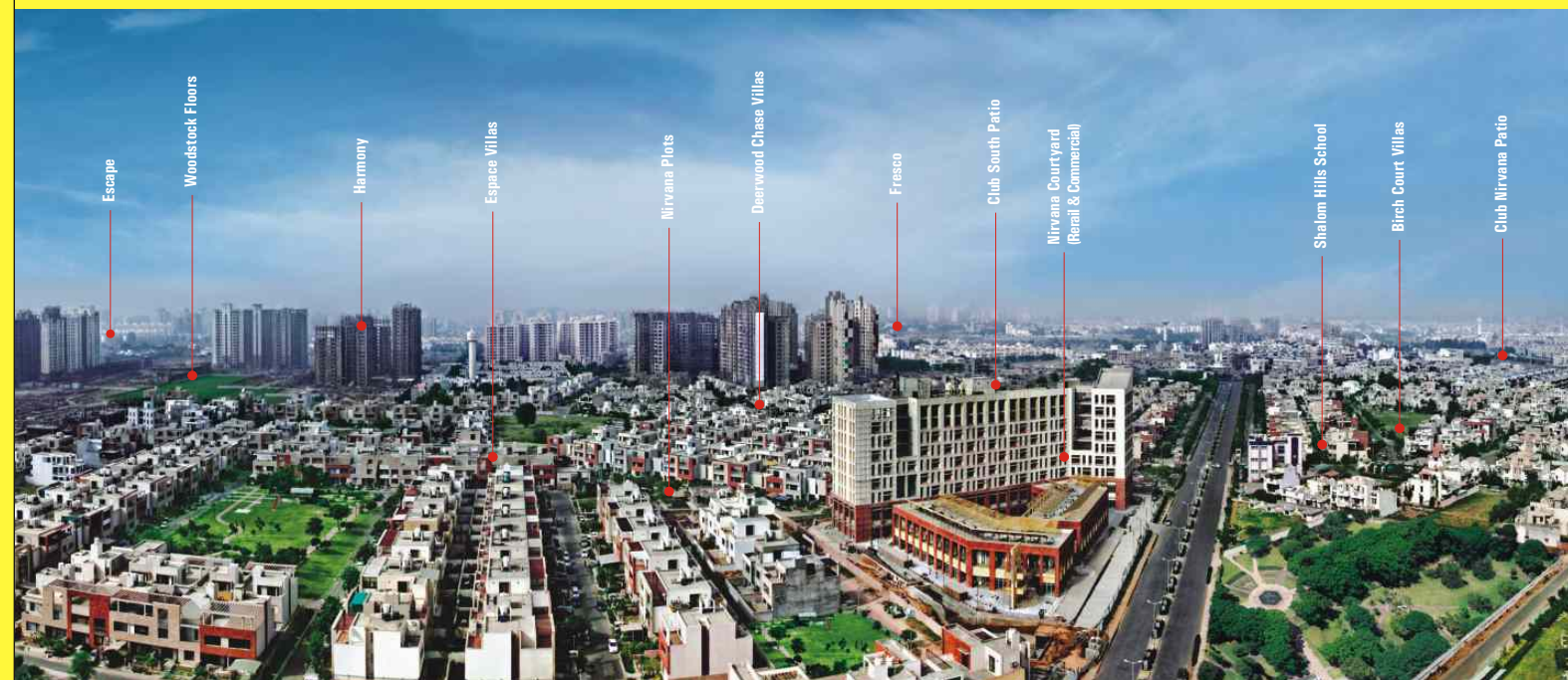
- Established in 1972, Unitech is India's leading real estate company with pan India footprint.
- Unitech has the most diversified product mix comprising Residential, Commercial/Information Technology (IT) Parks, Retail, Hotel, Amusement Parks and Special Economic Zones.
- Unitech was the first real estate developer to have been certified ISO 9001:2000 certificate in North India and was also conferred with the title of "Superbrand" by Superbrand India in 2007/2009.
- Unitech has long partnered with Internationally acclaimed architects and design consultants including SOM(USA), BDP(UK), Maunsell AECOM(HK), MEA Systra(France), Callison Inc.(USA), FORREC(Canada), SWA and HOK(USA) for various projects.
- Unitech's clientele for commercial projects includes global leaders such as Fidelity, McKinsey, Bank of America, Ford Motors, Nike, EDS, Hewitt, Amdocs, Ernst & Young, Reebok, Keane, Seagrams, Perfetti, Exxon Mobile and AT Kearney.

UNITECH'S PAN INDIA PRESENCE



Group Companies: **unitech** infra **unitech** Corporate Parks

Panoramic view of Unitech Nirvana Country, Gurgaon
An integrated township in Delhi, NCR



unitech

City Office: Unitech Ltd. TPL House, Ground Floor, No.3, Cenotaph Road, Teynampet, Chennai - 600018.
Site Office: Malroja Puram, Nellikuppam Road, Nallambakkam, (Off Kelambakkam - Vandalur Road), Chennai - 600048.
Ph.: 044-404566650, 9500059595, 9500091361, 9500091495 | Email: chennai@unitechgroup.com | Web: www.unitechgroup.com



Surprisingly affordable homes for you.



Perspective view of Unihomes, Chennai

Sharing boundaries with the integrated township of Uniworld City, Unihomes at Nallambakkam is a 10 acre site, an address you have always aspired for. Nestled amongst greens and landscaped parks, Unihomes offers 2 & 3 bedroom apartments. The quality living you have always dreamt of. Each apartment has been efficiently designed to maximize space & sunlight while ensuring a superb community living experience.



Project Details

Location :	Nallambakkam
Connectivity :	Well connected to rest of the city with the OMR Road and GST Road
Total area :	10 acres
Max. height :	G + 3
Unit Type :	2 & 3BR Apartments
Sizes :	820, 990, 997 & 1011 sq. ft.

Amenities & Facilities



Gated Community



School Access



Convenience Shopping



Medical Facility



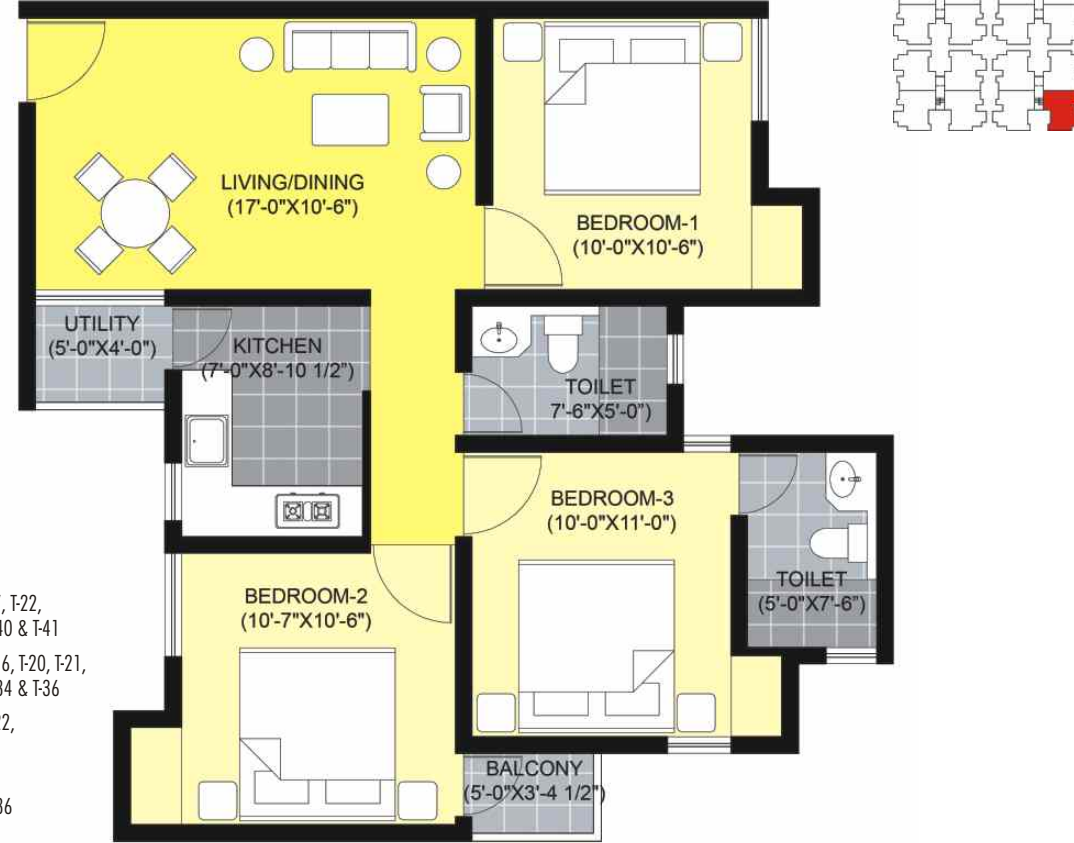
ATM Facility



Shuttle to Public Transport

Type A

3BR2T - 990 sq. ft.

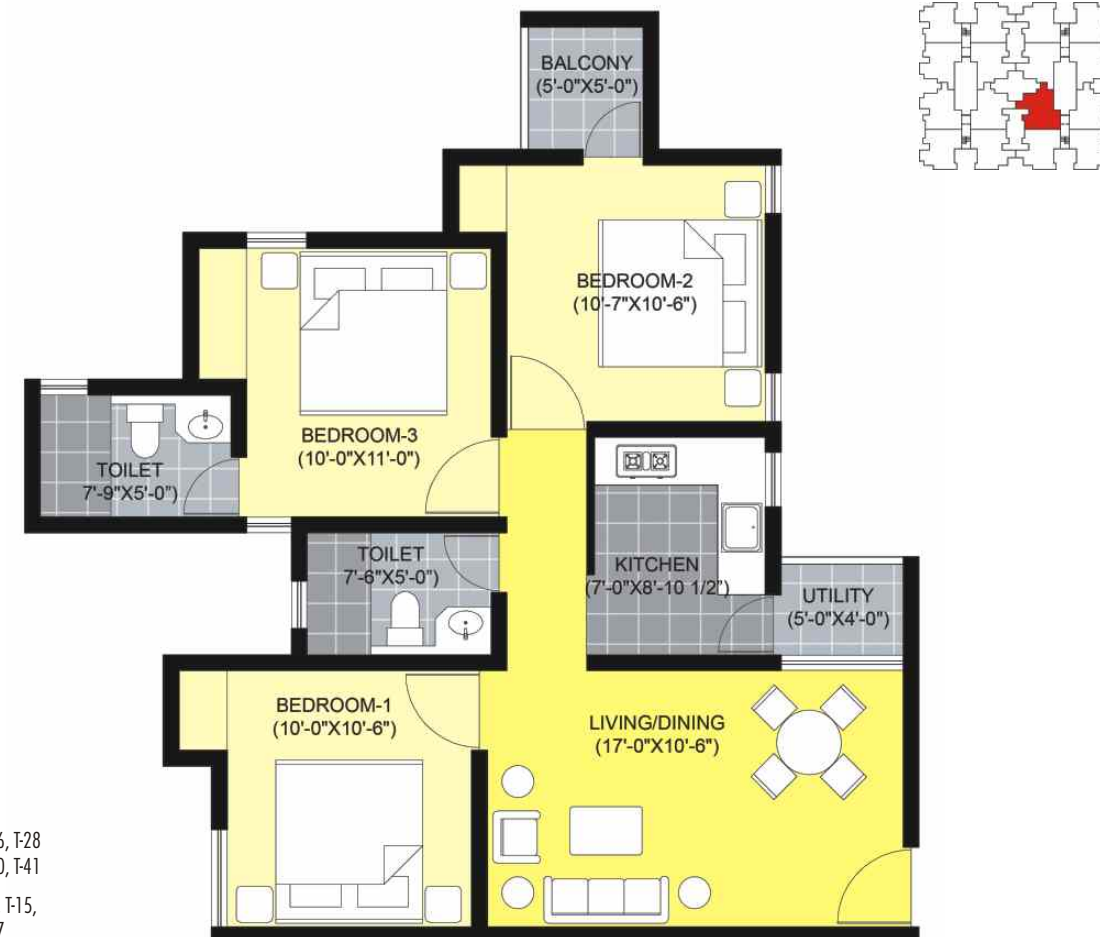


Applicable to:

- G01 & G04 - All Towers
- G02 - T1, T4, T6, T8, T9, F12, F14, F17, F22, F24, F26, F28, F29, F32, F35, F40 & F41
- G03 - T2, T3, T5, T7, T10, F11, F15, F16, F20, F21, F23, F25, F27, F30, F31, F33, F34 & F36
- 101, 201, 301 - F1, T4, T6, T8, F12, F14, F17, F22, F24, F26, F29, F32, F35, F41
- 104, 204, 304 - F3, T5, T7, F10, F11, F15, F16, F20, F23, F25, F27, F30, F33, F36

Type B

3BR2T - 1011 sq. ft.



Applicable to:

- 103, 203, 303 - F1, F2, T4, T6, T8, T9, F12, F14, F17, F21, F22, F24, F26, F28, F29, F31, F32, F34, F35, F40, F41
- 102, 202, 302 - F2, T3, T5, T7, T9, F10, F11, F15, F16, F20, F21, F23, F25, F27, F28, F30, F31, F33, F34, F36, F40

Project Specifications

Structure		Earthquake compliant composite load bearing wall structure
Flooring	Bedroom / Living / Dining Room Balconies	Vitrified tiles Ceramic tiles
Paintings	Internal Wall / Ceiling External Wall Doors	Plastered & painted with Oil Bound Distemper Plastered & painted with pleasing shades of exterior paints Synthetic enamel paint
Doors	Main Internal	Hardwood frame with moulded European shutters Hardwood frame with flush door shutters
Kitchen	Flooring Counter Wall Finish	Ceramic tiles Granite counter with stainless steel sink Ceramic tiles 2' height above counter top area, rest painted with OBD
Windows		Factory painted MS steel glazed window with grills for safety
Toilet	Flooring Sanitary Ware/Fittings Dado	Ceramic tiles White shade ceramic ware with CP fittings Ceramic tiles upto 7' height
Electrical		ISI quality cables with copper wiring through PVC conduits Piano type switches Light point, fan point, power point in each room and call bell point in dining area
Communication		One TV outlet in the living room & master bedroom. One telephone outlet in living / dining
Power back-up		All common areas
Lift		One for each block

All floorplans, sitemap, specifications, amenities, facilities and perspective views are tentative in nature and are subject to revision

Key Plan

