



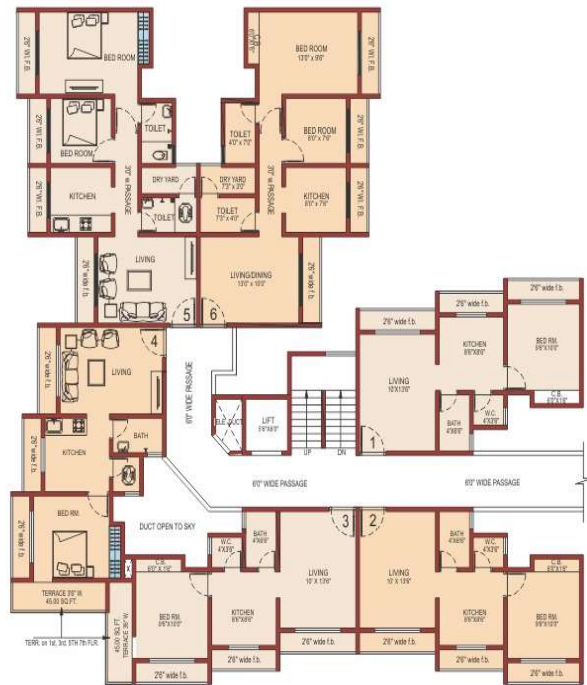
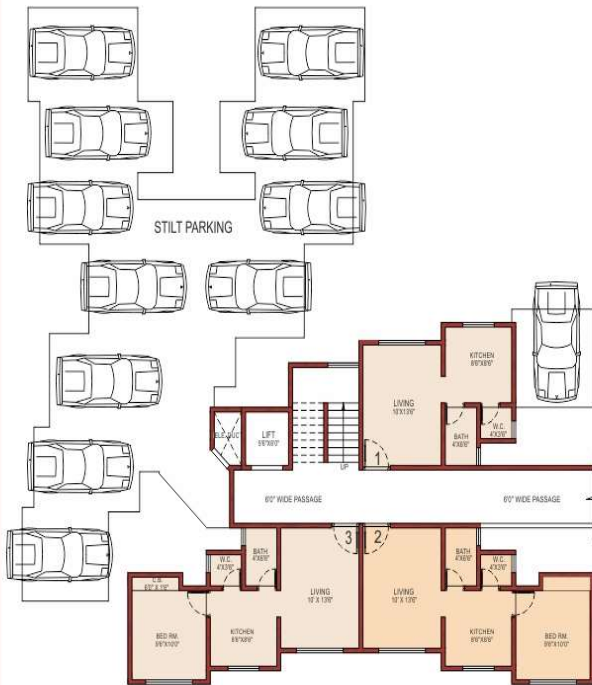
**Manas hills**  
LIVE LIFE WITH NATURE  
VASIND, SHAHPUR







GROUND FLOOR PLAN  
TYPE - A2



TYPICAL FLOOR PLAN  
TYPE - A2  
(1ST TO 7TH FLOOR)



# Manas hills

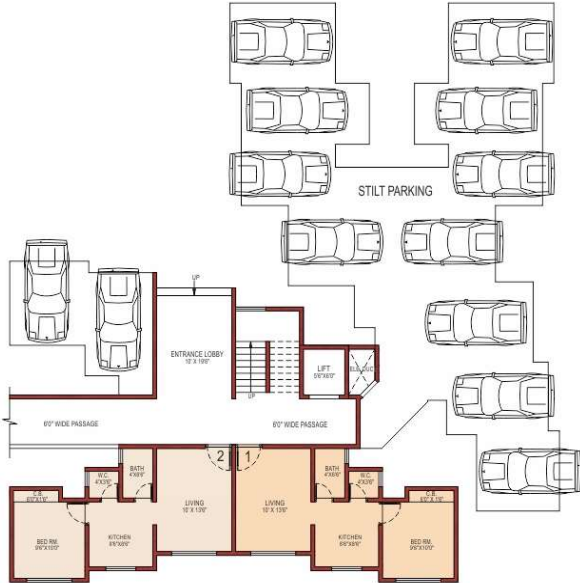
## GROUND FLOOR PLAN TYPE - A1



## TYPICAL FLOOR PLAN TYPE - A1 (1ST TO 7TH FLOOR)



GROUND FLOOR PLAN  
TYPE - A



TYPICAL FLOOR PLAN  
TYPE - A  
(1ST TO 7TH FLOOR)



Manas hills



1 RK



1 BHK



2 BHK

### IN FLAT AMENITIES

- 2X2 Vitrified Floor Tiles / Cross ventilation and natural light
- Acrylic Distemper Paint on wall and weather shield over external walls
- Attractive front door with safety latch
- S.S. Kitchen Sink – Branded
- CP Fitting - Branded
- Electric concealed fitting – Branded
- Pre installed points for Cable
- Aluminum Sliding – Powder coated window on green marble
- Black Granite Kitchen Platform
- Provision for exhaust fan
- Wooden door frame & laminated flush door at main door & bedroom also waterproof door at WC & bath
- Concealed plumbing
- Branded ceramic tiles in Kitchen, Bathroom & WC

### YOUR DESTINATION AWAITS

01. Temple
02. Sand Pit
03. Steps
04. Club House
05. Jogging Track
06. Meditation / Yoga
07. Children Play Area
08. Senior Citizen Area
09. Chess
10. Snake Puzzle
11. Garden



### SALIENT AMENITIES

- Project approved & home loan available for all leading banks and financial institute.
- Well designed earthquake proof RCC constructions
- Vastu & energy enhanced site
- Low maintenance cost & property taxes
- 24x7 security & facility management
- Separate electrical connection & MSEB transformer for site
- Ample parking space available for two & four wheelers
- Retail shops are available for the necessary utility & luxury house hold items
- Schools & hospitals nearby
- Life in all buildings
- Beautiful designed entrance

PROJECT BY



**OFFICE ADDRESS**

201, Maruti Villa CHS., Opp. ST Workshop, Khopat  
Thane. (W) 400601.

**Tel: 8454844477 / 7738316644 / 9322236365  
9324436365**

**Architects:**

Somnath Nair & Associates  
Thane.

**Legal Advisor**

R. K. Mishra

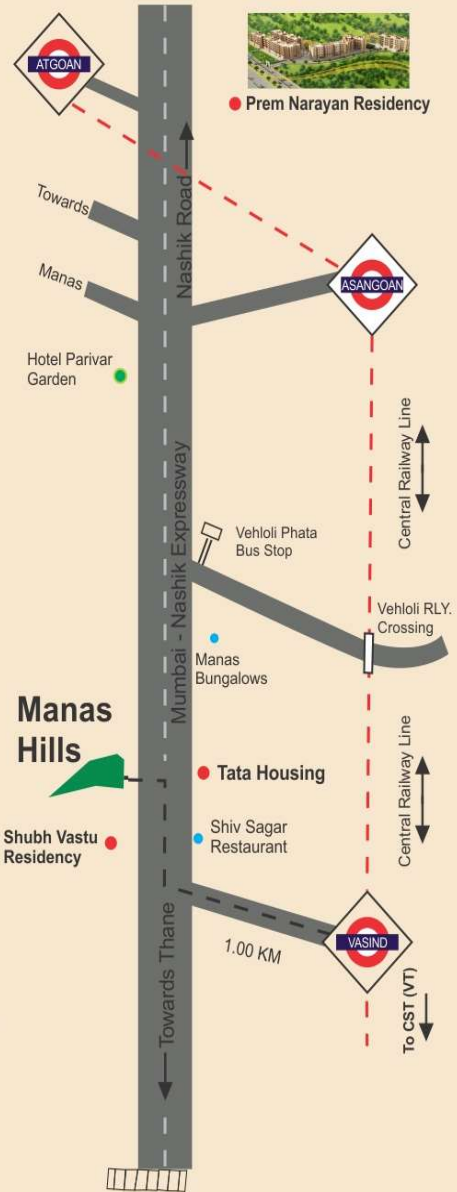


**Site Add:**

At post Khativali, Vasind, Opp. Tata Housing, Near Western Hotel,  
Petrol Pump, Shahpur, Vasind (W), Thane.

**Email:** adinathdeveloper2014@gmail.co • **Website:** www.aadinathdeveloper.com.

Disclaimer : All Plans, Drawing, Amenities, Facilities Etc. Are subject to approve of the respective authorised it would be changed, if necessary. They this creation remain with the developer. All rendering Pictures & Maps are the artist constructions & not actual depictions of the plot, roadways are landscaping. The brochure is for guidance & not a legal document the brochure should also reproduced, copied or made available other any form of transmission. The design & specification depicted in the brochure are subject to change without prior notice. Proposed development as mentioned in the brochure is subject to approved of complete authorities .



Option Print | 27893435