

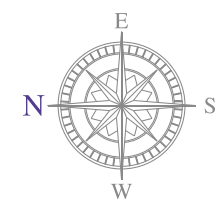
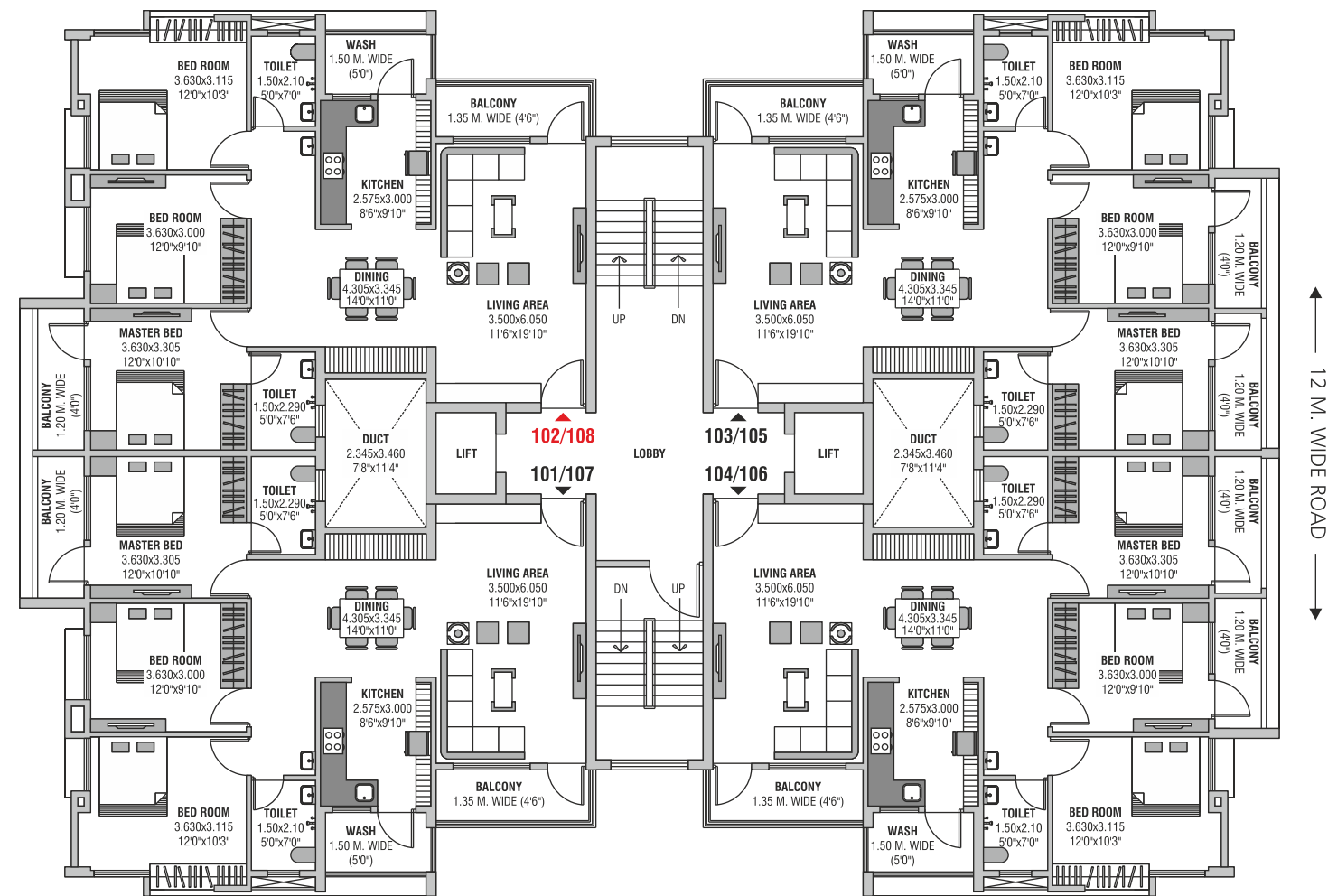
LEVERAGE
Greens

ASTER
2/3 BHK APARTMENTS

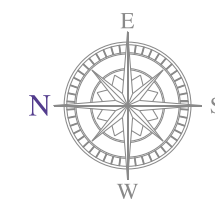
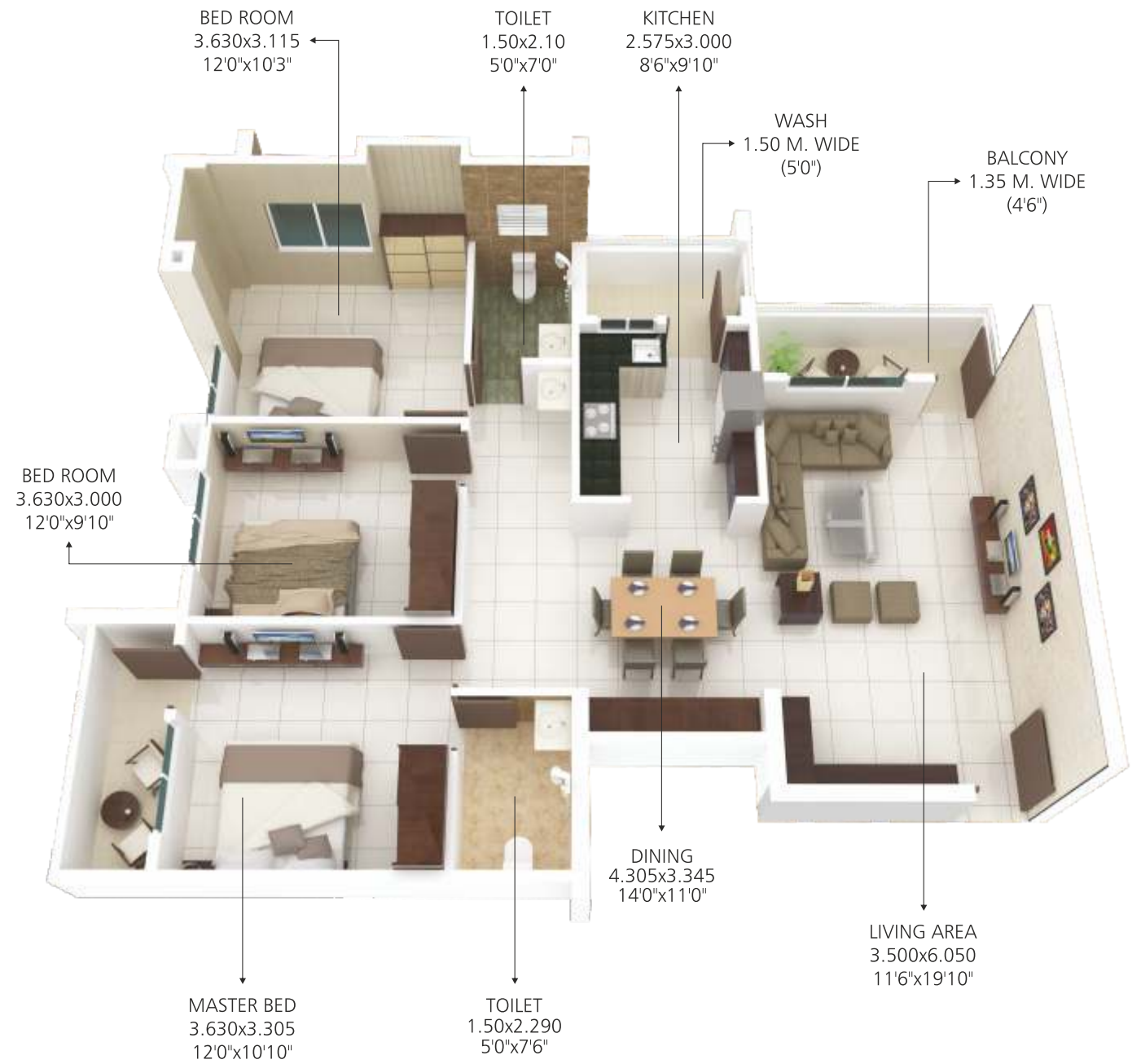
Maha-RERA Registration No. P50500001906



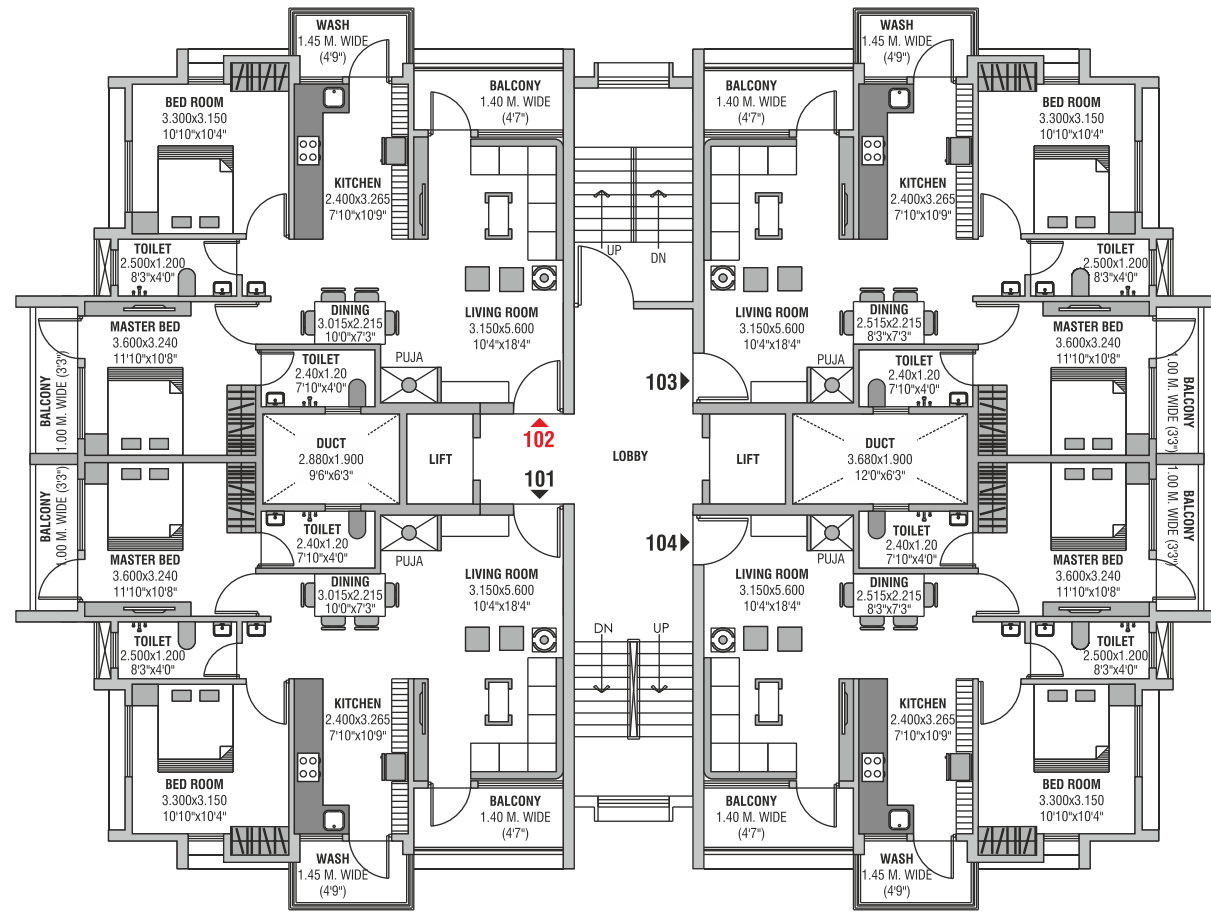
3-BHK (BLOCK-1/2)
Typical Floor Plan



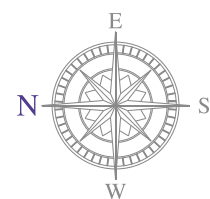
3-BHK
ISOMETRIC VIEW
FLAT NO. 102/108



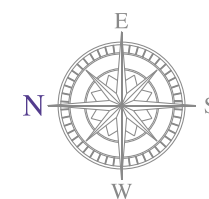
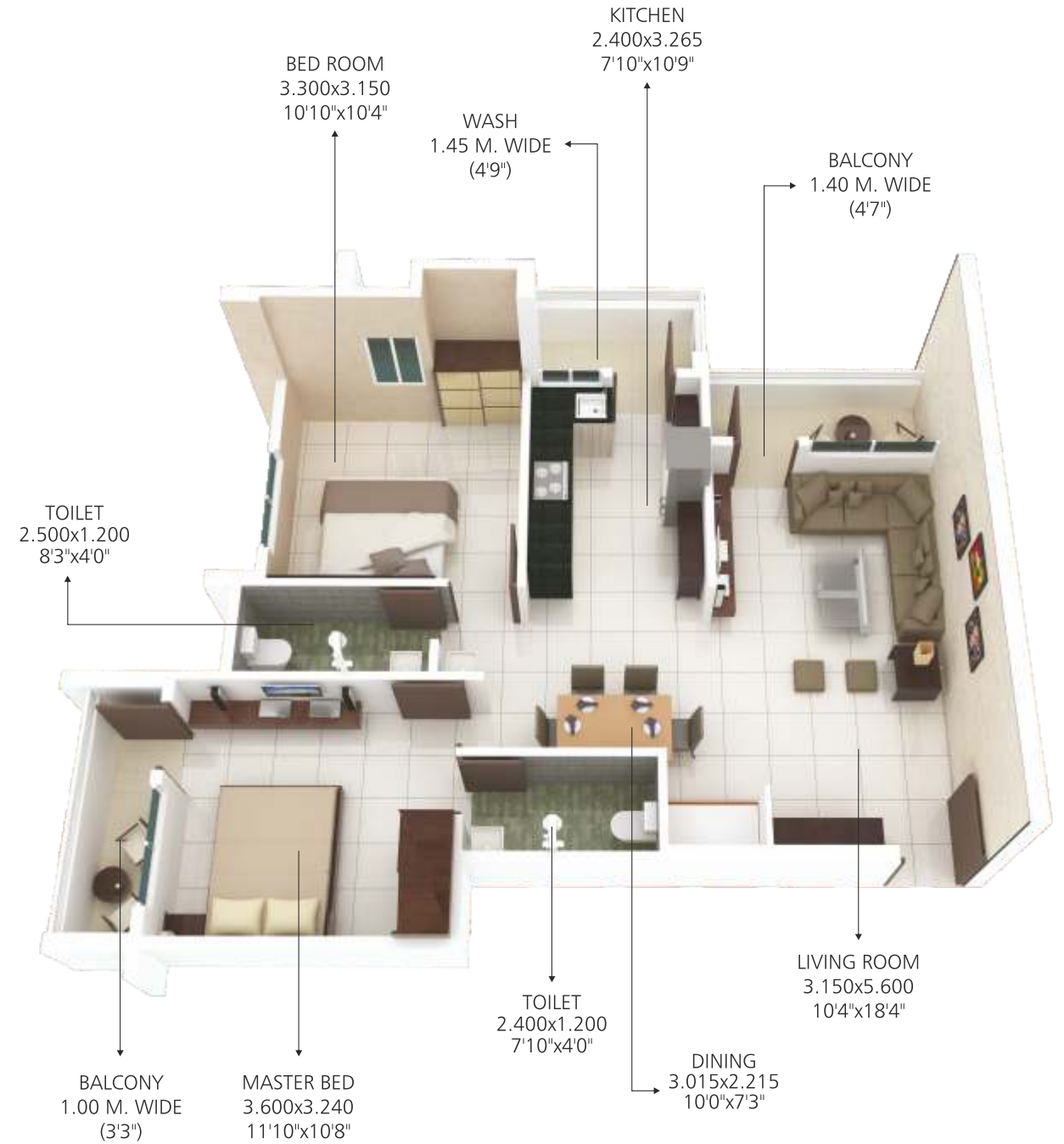
2-BHK (BLOCK-3)
Typical Floor Plan



TWIN DUPLEX 1 TO 9



2-BHK
ISOMETRIC VIEW
FLAT NO. 102



An overview



2-BHK / 3-BHK Apartments

Club House

Swimming Pool

Gymnasium

Indoor Games

Outdoor Sports

Yoga Hall

Guest Rooms

Salient Features

Wide internal roads

Underground electric cables

Gardens, Children Park, Jogging Track

24x7 Security

Leading schools & colleges in near vicinity

CLUB HOUSE - ARCHITECT'S PERSPECTIVE



SPECIFICATIONS

Flooring

- Vitrified tiles in entire flat
- Anti-skid tiles in balcony, toilets and utility area

Kitchen/Utility

- Granite platform with stainless steel sink
- Glazed tiles dado upto 2.0 ft. height above the platform
- Inlet/Outlet for washing machine
- Provision for water purifier

Toilets

- Glazed tiles dado upto 7 ft. height
- Sanitary ware: Parryware or equivalent
- Bath fittings: Jaquar or equivalent

Doors

- Main Door: Besecure Door or equivalent
- Other Doors: Decorative moulded Masonite / Flush Door
- R.C.C. door frames



Windows

- Powder coated aluminum sliding windows
- M.S. grille and mosquito net
- Marble window sill

Electrification

- Modular switches of Legrand or equivalent
- Telephone points in drawing room and master bedroom
- TV points in drawing room and master bed room
- Power points for air conditioner in all rooms
- Inverter wiring

Painting

- Exterior: Weathershield emulsion paint
- Interior: Putty finish

Back-up

- Power back-up for lift and common utilities

Parking

- Covered car parking

ACTUAL PHOTOS OF CLUB HOUSE



PLUSH COMMUNITY HALL



STATE-OF-THE-ART GYMNASIUM



INDOOR SWIMMING POOL



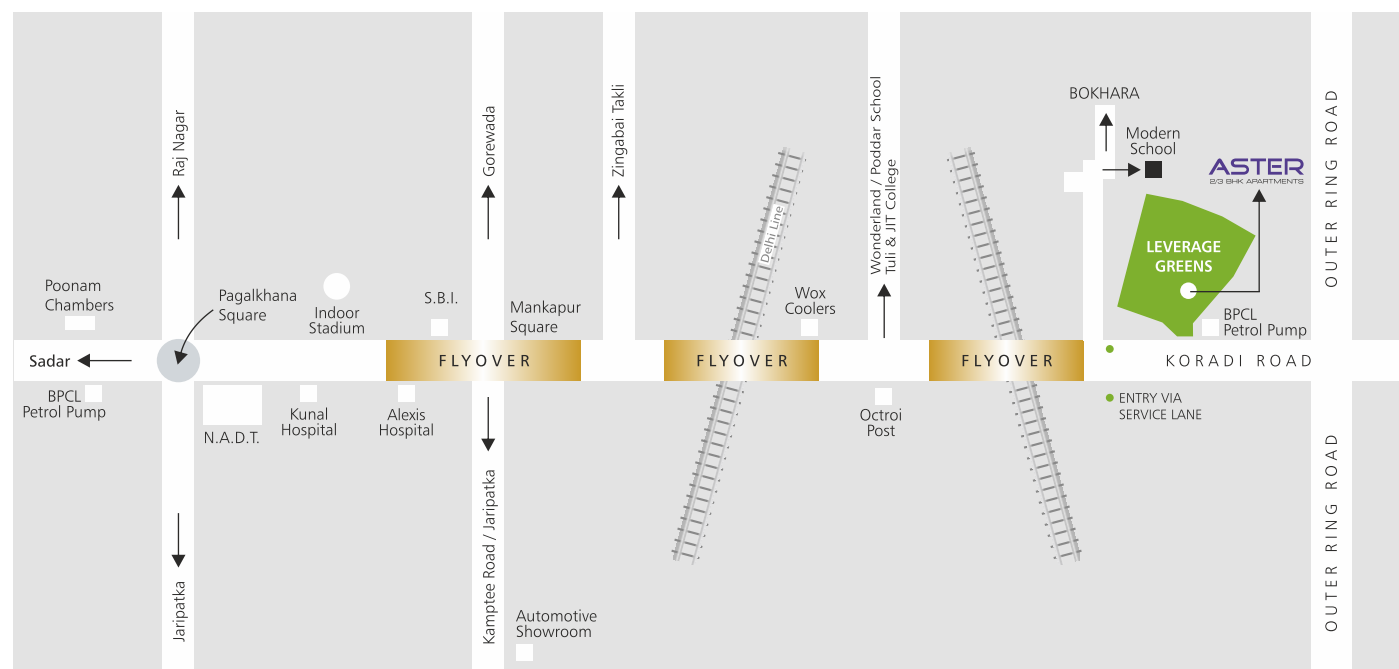
VARIOUS INDOOR GAMES



VIEW OF ASTER AT LEVERAGE GREENS



BIRD'S EYE VIEW OF LEVERAGE GREENS



Approx. 5 KM from Poonam Chambers, Sadar • Approx. 7.5 KM from Railway Station / Zero Mile • Approx. 13.5 KM from International Airport

A series of horizontal dashed lines for taking notes.

Architect
AR. PRASHANT SATPUTE
Design Cell, Nagpur

Structural Consultant
P.S. PATANKAR & ASSO.
Nagpur

Legal Consultant
ADV. ANIL MULCHANDANI
Nagpur

Financial Consultant
MILIND KANADE
Nagpur

deepak.kaswa + 91-9823068326

A Joint Venture of



LEVERAGE INFRASTRUCTURES PVT. LTD.

For enquiry and details, call:
9552 755566 • 9552 655566
9552 855566 • 9552 885566



FF-1/2/3, Girish Heights, L.I.C. Square, Near Bharat Talkies, Sadar, Nagpur - 440 001 (M.S.), INDIA
Tel.: 0712-6609960 E-mail: sales@leveragegroup.in Website: www.leveragegroup.in

Note: This brochure is purely a conceptual presentation and not a legal offering. Pictorial depiction and details of buildings, layouts, specifications, designs, dimensions, etc. as shown in this brochure are tentative, indicative and subject to amendment, variation and modification by the Company at its sole discretion and without any notice.