



**SIROCCO  
GRANDE**

...unleash your free spirit

A Creation of

**BENCHMARK**  
BENCHMARK TOWNPLANNING LLP

 **NATASHA CONSTRUCTIONS  
PROJECT PRIVATE LTD.**  
THE SYMBOL OF TRUST

Registered Office Address:

Benchmark Group of Companies 56/901, Empresa, 2nd Road, Opp. Municipal Market, Khar (W), Mumbai - 400 052. | Tel : 26486106 / 07 / 08 Fax : 2648 6109 | [www.benchmarkindia.co.in](http://www.benchmarkindia.co.in)

Site Address:

Survey 11, Hissa No. 6/1, 6/2, 7, Punawale Road, Village Punawale, Taluka Mulshi, Dist. Pune. Tel.: 020 2027 9995  
Kainaa: +91 97023 00065 | Nitin: +91 9930946263 | | [kainaa@benchmarkindia.co.in](mailto:kainaa@benchmarkindia.co.in)

  
**SIROCCO  
GRANDE**

...unleash your free spirit





# A BEAUTIFUL HOME THAT COMPLEMENTS THE DELIGHTFUL BREEZE

It lets you be and sets you free...

It flares up the romance. It elevates the dreams to touch the stars. It breezes into our intimate moments. Wind touches the soul in more ways than ones. Inspired by this free flowing element, we have designed a residential marvel that is free spirited, vibrant, energetic, forward looking and generous. Here is a home that does not put you in confining shackles but sets you free on an enriching journey called life!

Pollution free ambience, excellent architectural planning, abundant lifestyle features and most importantly complete freedom to design and enjoy your life the way you want to.





Layout Plan

Phase 1

Phase 2



# LIFE IS IN THE AIR... REVEL IN IT...

Sirocco Grande is afresh with life in all its myriad ways. The focus is a large central continuous green space lovingly done. It encompasses an array of activity oriented spaces like multipurpose lawns, senior citizens areas, roadside decks, resting gazebos, kids' zone. All this is connected by a meandering walkway that strolls through this happening life.

Plan your programs at the club house. Stay fit at the jogging track. Play a winning inning at the squash court or tennis court. Take a cool dip at the swimming pool. Make the most of every moment.



# WELCOME TO A WORLD OF DREAMS

Here is a space that is entirely yours. Each of your beloved family members will find his or her dream reflected in it. Sirocco Grande is a contemporary style statement in aesthetics and finishing, thoughtfully created for all age groups. The designed entrance experiences are as enthralling as unique. The Entrance gateways are prominent and welcoming. Step in and get mesmerised.



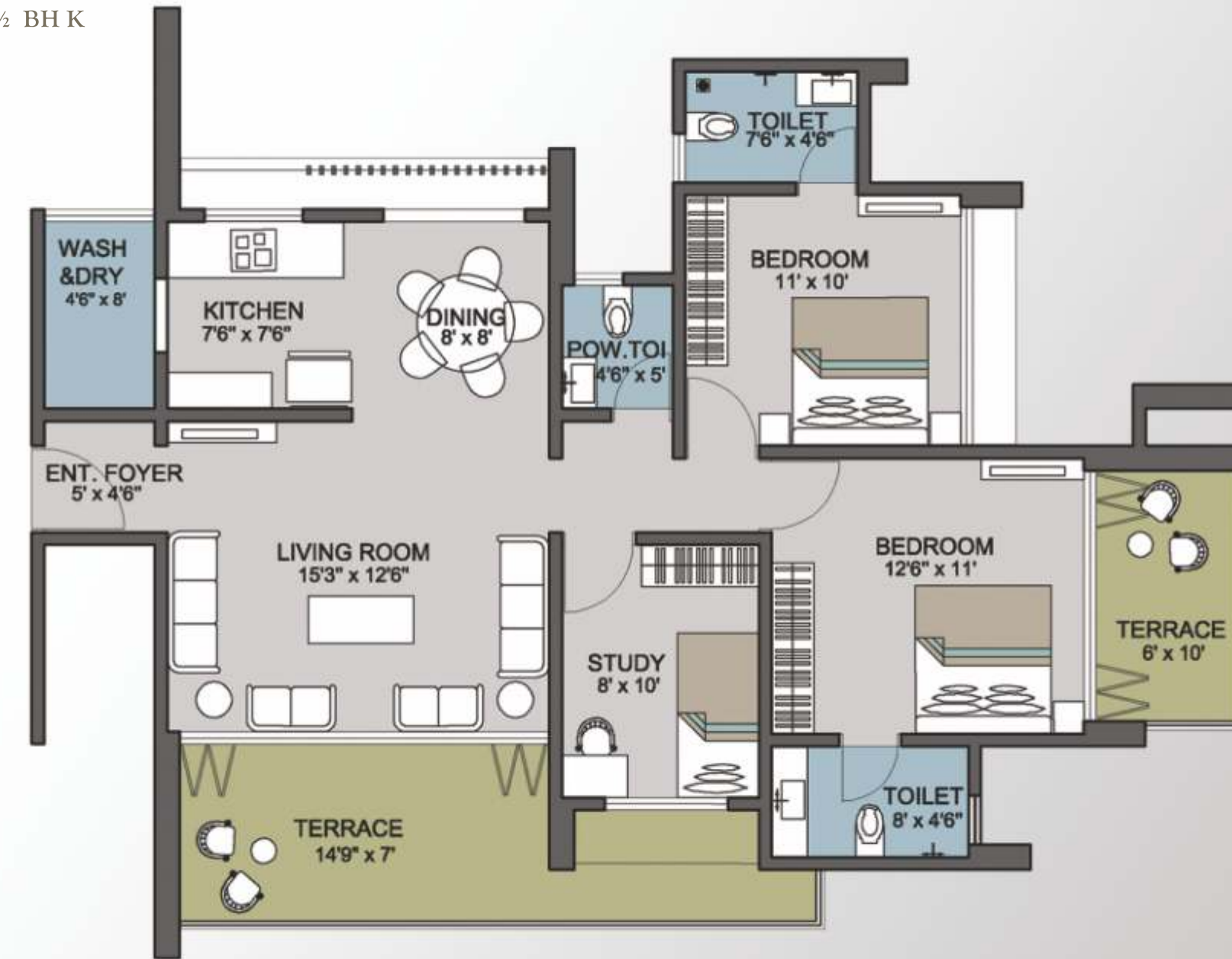


# SPACED OUT FREEDOM HOMES

At the core of this exclusive living experience is an insightful planning by indigenous minds. Smart allocation of the spaces has worked wonders for the project. We have organized parking spaces, articulates leisure spaces and special zones. The residents have direct link through the access lobby at the core. So the connection with the ground and the nature is never lost and your bond with your home is stronger than ever.

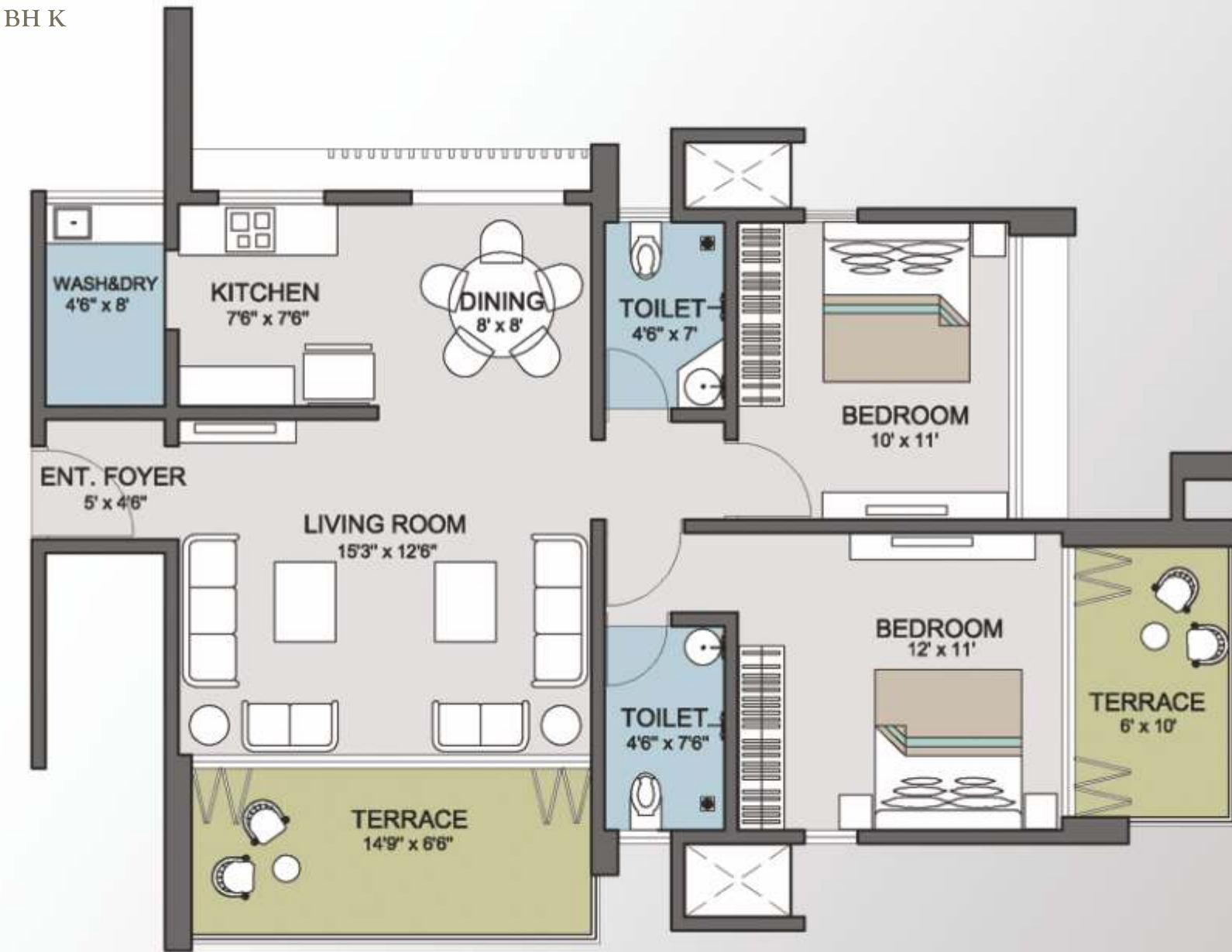


Building: B & C - 2½ BH K  
 1295 sq.ft. (Odd)  
 1325 sq.ft. (Even)





Building: A, D & E - 2 BH K  
1130 sq.ft.





SIROCCO  
GRANDE

REALIZE YOUR  
**FANTASIES**  
IN YOUR  
OWN ZONE







Sirocco Grande has segregated zones for diverse purposes and a well planned segregation of vehicular movements for creating safe landscape spaces for kids and senior citizens. Let the kids have gala time at the Tot Lots, the multiple kids zones. For elders there are Play Court and the play equipment zones. Celebrate your togetherness at the exclusive Club Zone with large entrance court with a water feature. Have fun time at the Party Zone with large party lawn and a performing area. Indulge and pamper your senses at the Spa Zone with gymnasium, swimming pool, kids' pool and poolside deck with a gazebo.

As important as all these characteristics is also the eco-friendly nature of the construction. Sirocco Grande encompasses Eco Friendly and Green features like solar water heating systems, green sewage water system and rain water harvesting system.





A GUSH OF  
**DESIGNER**  
**LIVING**  
IS HERE





Location



Projects by Benchmark



A Creation of  
**BENCHMARK**  
 BENCHMARK TOWNPLANNING LLP

About the Developers

Benchmark was established out of a desire to bring about a defining change in the building construction and real estate industry. A change to not only rewrite the rules of building construction but also to effect a sea change in the way the sector was perceived.

Benchmark with its more than 25yrs of experience, rapidly developed an enviable reputation for innovation and value addition, have an impressive number of premium projects in and around Mumbai in the span of just a decade. With redevelopment being the mantra of change for Mumbai.

Benchmark' impeccable record in building construction gives it an edge that regular developers can seldom match.

Sirocco Grande was a joint creation by Benchmark Town planning LLP and Natasha Constructions projects Pvt. Ltd. a sister concern of Patel Group of Companies, a company having more than 30 yrs of experience in building construction and also pioneers in transportation Industry

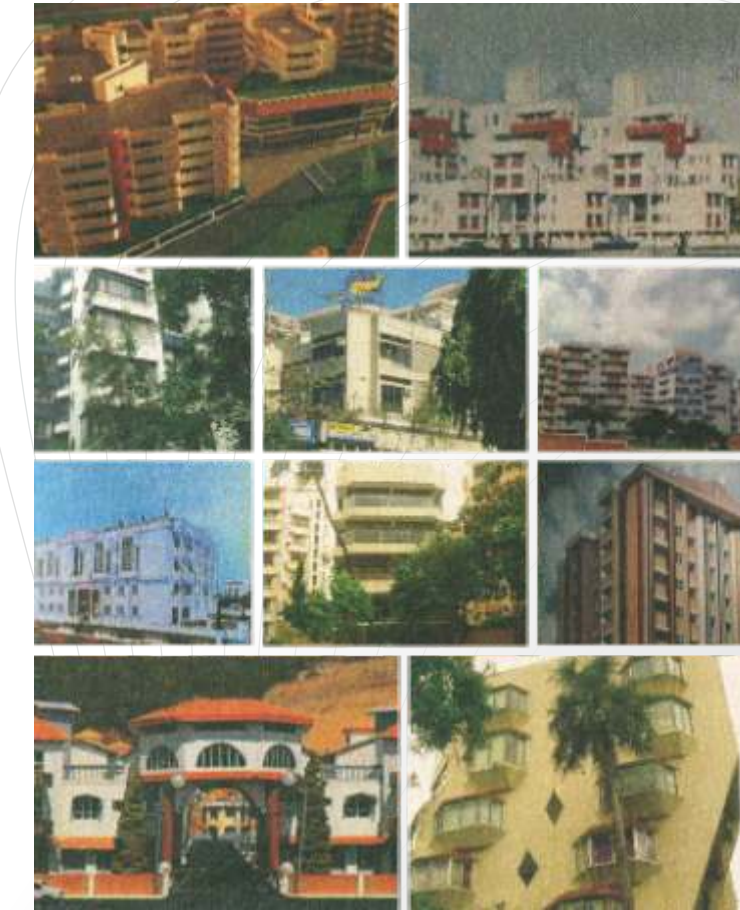


Promoter & developers

The House of Patels is multi-faceted conglomerate with over 50 years of customer trust with diverse interests, which include finance, foreign exchange, remittance services, logistics, construction & real estate.

The groups' construction activities which started in the city of Mumbai has spread to the Deccan IT hub of Pune, to the scenic splendor of Goa and down south to the garden city of Bangaluru & Kerala. The group has several completed residential and commercial properties to its credit which boost of efficiency and style.

Projects by Natasha Constructions



Credits

**Architect**  
 Tejomay Consultancy

**Designing Architect**  
 PR Consultants

**RCC Consultants**  
 Satish Jain & Co.

**Legal Advisor**  
 Adv. S. R. Vasavada & Co./Solicitor Shabbir Kapadia

**Landscape Designers**  
 Landart Designs

**MEP Consultant**  
 Integrated Consultants

**Environment Consultants**  
 Global Green Energy & Sustainability Solutions Pvt. Ltd.

**Graphic Consultant**  
 Milind Gokhale