

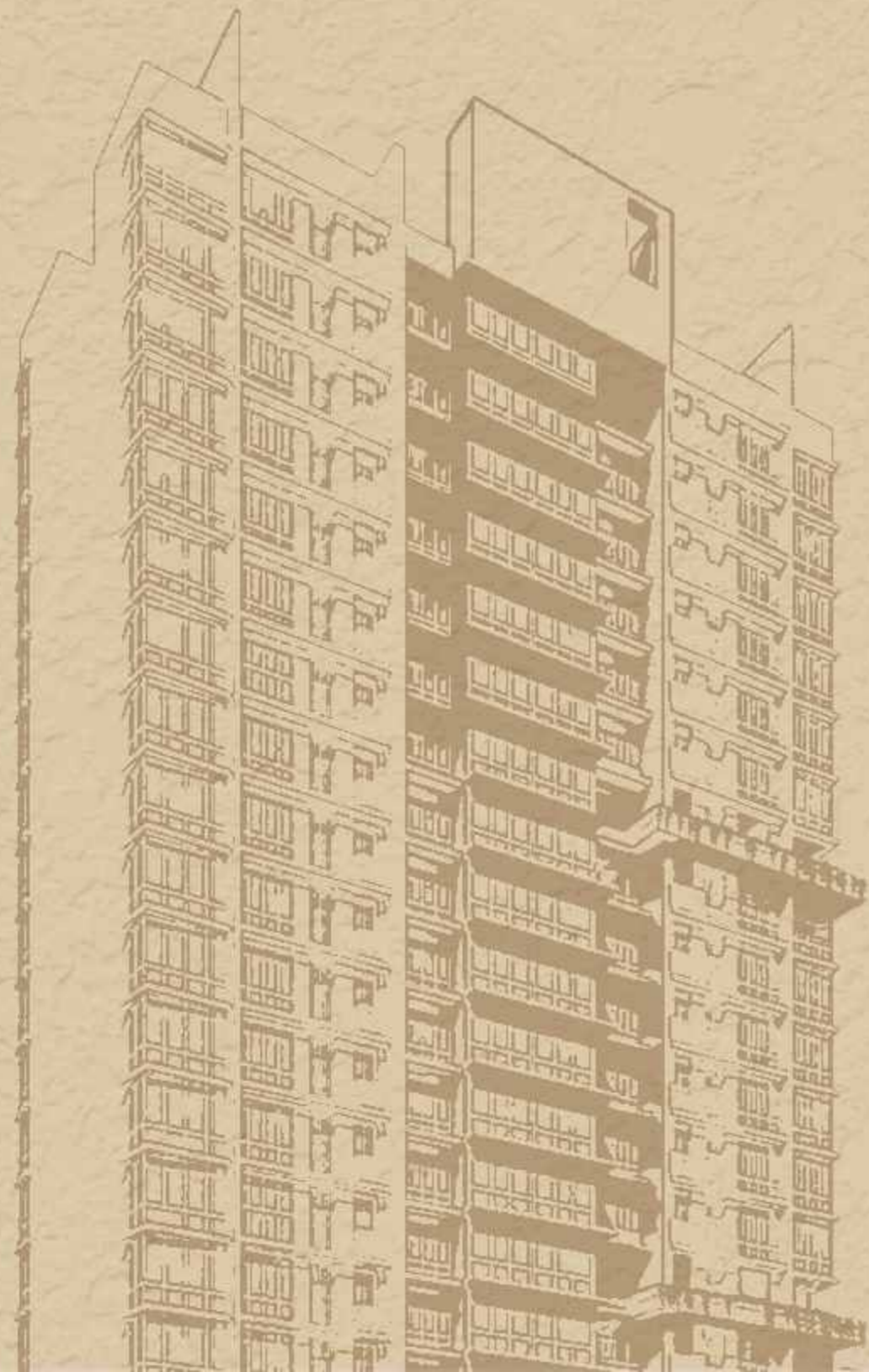


# Sand Dunes

A Crowning Glory For the Deserving Few



Discover a new world of happiness



From the house of Sun Developers a joint venture of **ASMITA INDIA LTD.** & **FNK GROUP**, comes yet another tribute to modern living at Malad (W) a classy Multistoried Shopping cum Residential master piece tower SAND DUNES.

Marvelous architectural details, splendid landscaping and the most advanced features blend in a chic lifestyle with the utmost comfort and convenience. It is located close to S.V.Road and Link Road in Sunder Nagar with Basement, Podium, Ground and Upper Twenty Floors.

A result of meticulous detailing, these premium residences are available in a choice of 2BHK and 3BHK plans, each representing a unique mix of style and perfection.

Every home in Sand Dunes has been created with your needs in mind. The apartments are well-appointed with an elegant foyer, which spreads out to the spacious living room. A walk-around presents stunning views through the huge, open windows, which also allow maximum natural light, making your home airy and ambient. The bedrooms are spacious with seamless corners giving a feeling of freedom and space. So step right in and experience luxury in its true form.

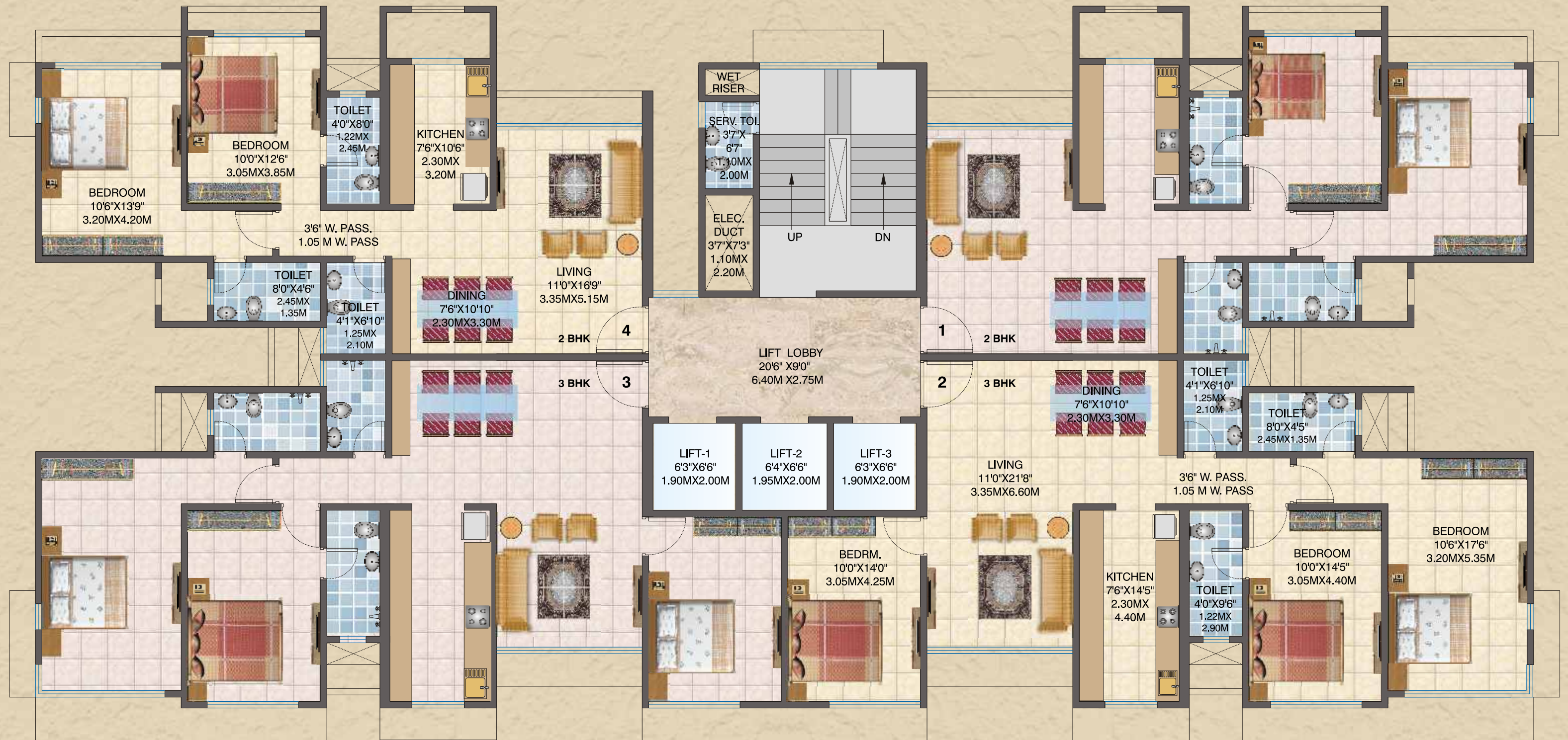




An Abundance of Space, Comfort And Luxury.



A Thoughtful Attention To Detail.



TYPICAL FLOOR PLAN





# Sand Dunes

A Crowning Glory For the Deserving Few





Experience The True Grandeur of Luxurious Life.



#### In the Apartment

- Vitrified tiles in the living room, bed room and kitchen.
- Designer Ceramic tile flooring and Dado in bathroom / toilets.
- Granite double kitchen platform, with full height tiles upto window lintel level.
- Superior quality sanitary fixtures with concealed plumbing in bathroom.
- Instant geysers in bathroom.
- Elegant Main Entrance door.
- Granite frames for toilet doors.
- Anodized Aluminium windows.
- Good quality internal distemper paint.
- Electric points with concealed copper wiring.
- Modular switches, fittings and fixtures for convenience.
- Safety features like E.L.C.B.
- T.V., A.C. and telephone points in each room.
- P.O.P / gypsum finished wall.



#### In the Complex

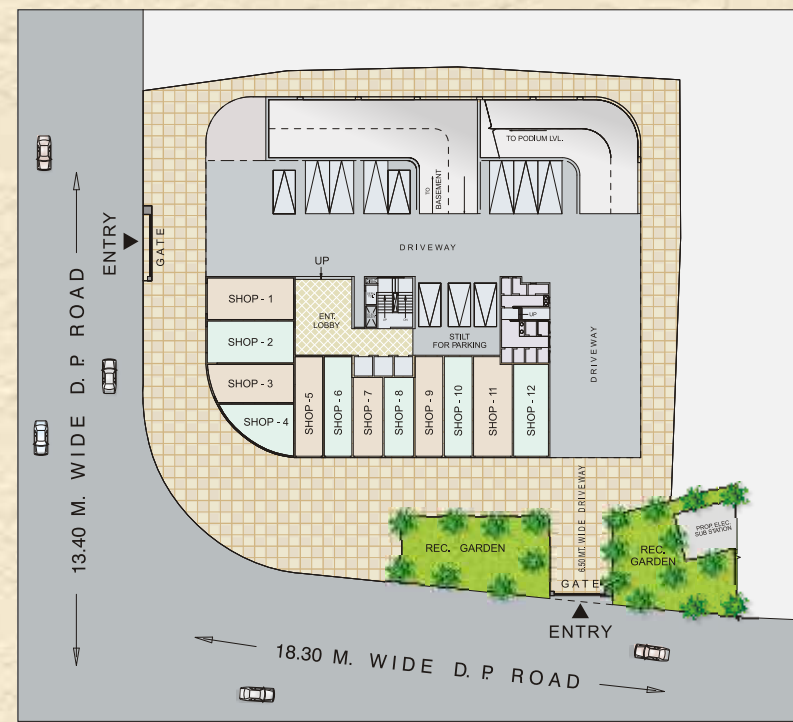
- Landscape Garden
- Children's play area
- Paved tiles pathway
- Society office

#### In the building

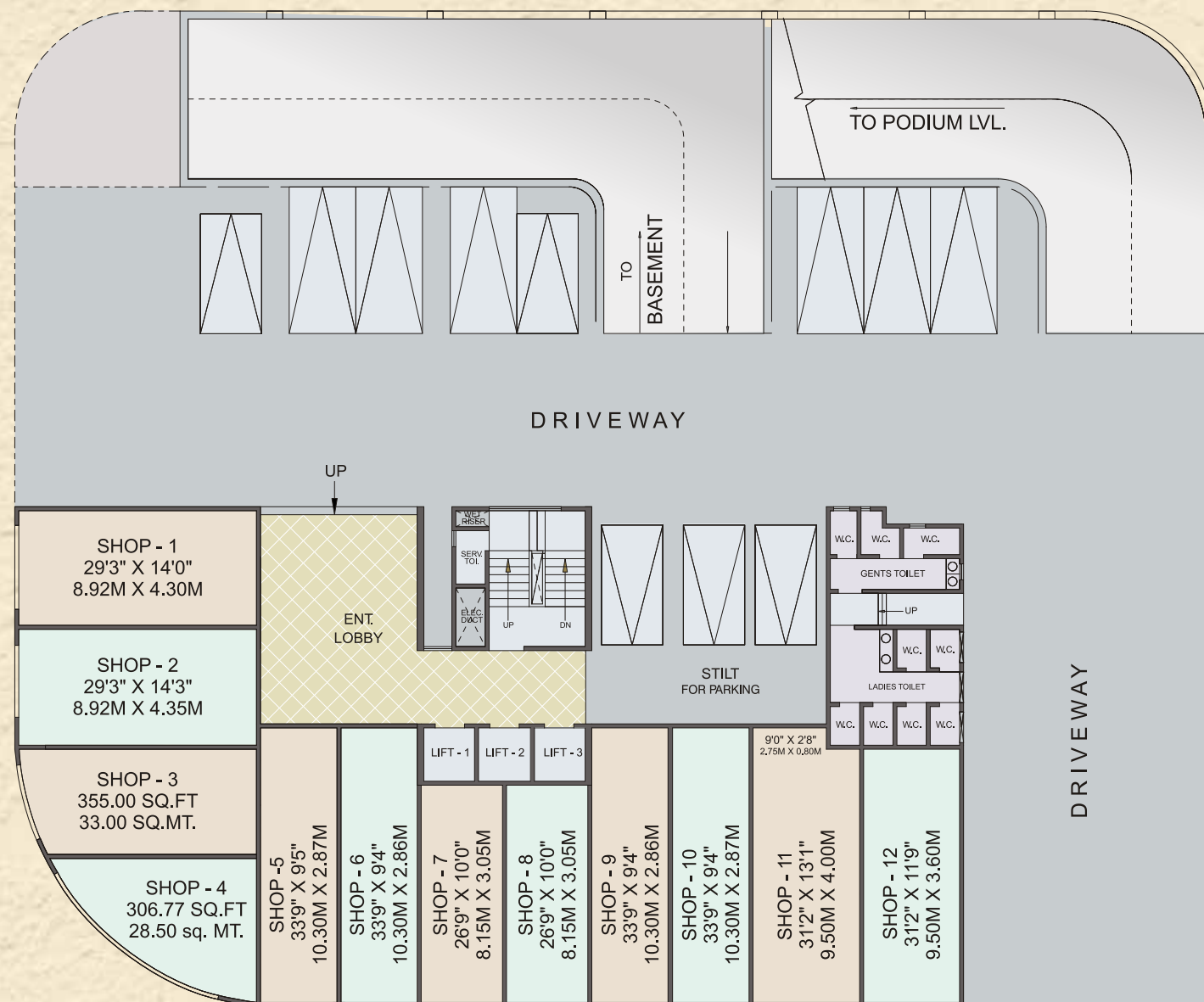
- Impressive Entrance lobby.
- Passenger elevators of reputed make.
- Fire-fighting system
- Earthquake resistant design.



## Stimulating business environment



Ground Floor Plan



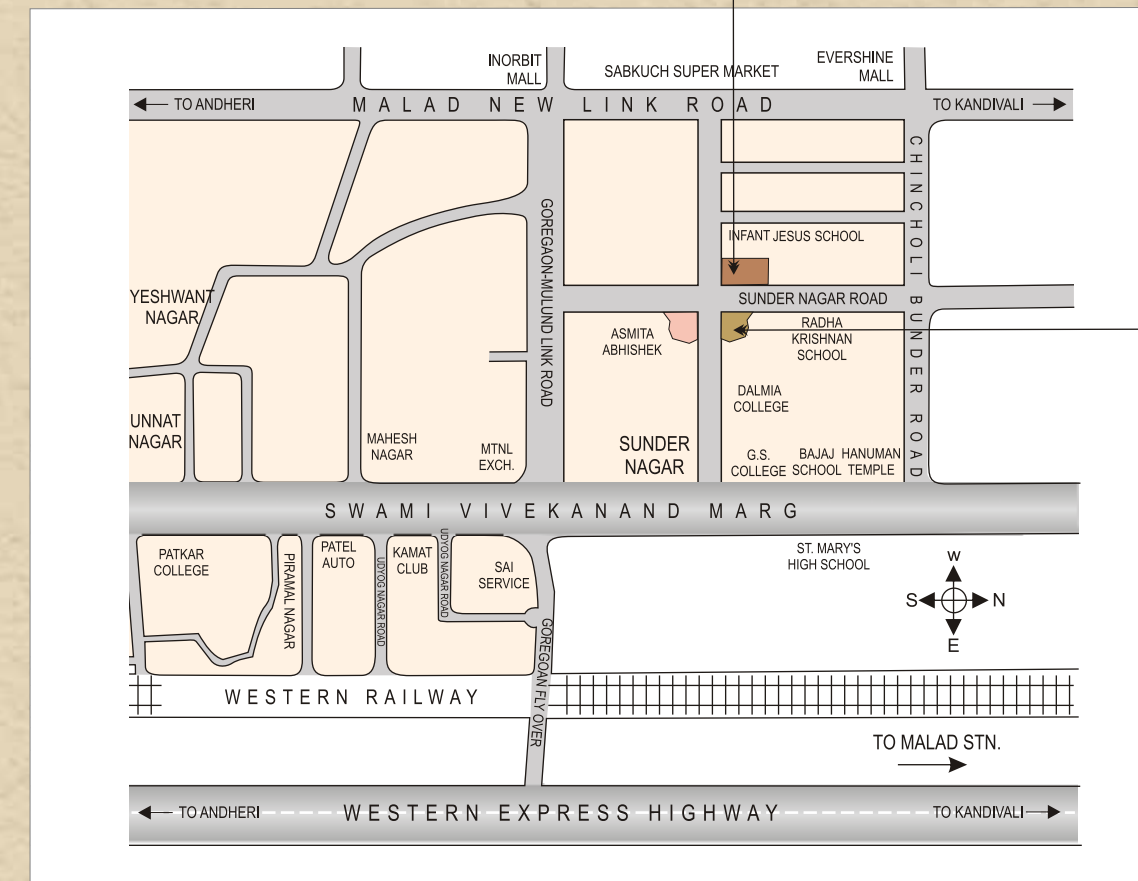
CORPORATE CORNER



# Sand Dunes

An address that's the envy of the town

## Location plan



Site: Sand Dunes, Near Sarvapalli Radhakrishnan School, Opp. Dalmia College, Sunder Nagar, Malad (W).



Actual Photograph of Corporate Corner (Commercial building)



Developer



A Joint Venture of  
**ASMITA INDIA LTD.**

Office : Asmita House, Asmita Township, Mira Road (E), Dist. Thane - 401107.  
Tel : 2811 1185 • Fax : 2811 8864 • Email: [asmita.realty@yahoo.com](mailto:asmita.realty@yahoo.com)  
Website : [www.asmitagroup.com](http://www.asmitagroup.com)

&

**PNK GROUP**  
BUILDERS & DEVELOPERS

Tel: 2833 8294 / 2833 8295

Architect  
**ABS AAKAR ARCHITECTS**  
+91 9930772882

Advocate  
**Mukesh Jain & Associates**  
Tel.: 22062531