

MAKE EVERYTHING GRAND



RERA REGISTRATION NO. # PR/KN/170731/000479

anya  *Hansa*
GRANDE
J P N A G A R 8 T H P H A S E



A GRAND LIFESTYLE IS CALLING
AT JP NAGAR 8TH PHASE



ARYA LOTUS, WHITEFIELD



ARYA HAMSA, J P NAGAR



ARYA SEVERIA, MAHADEVAPURA



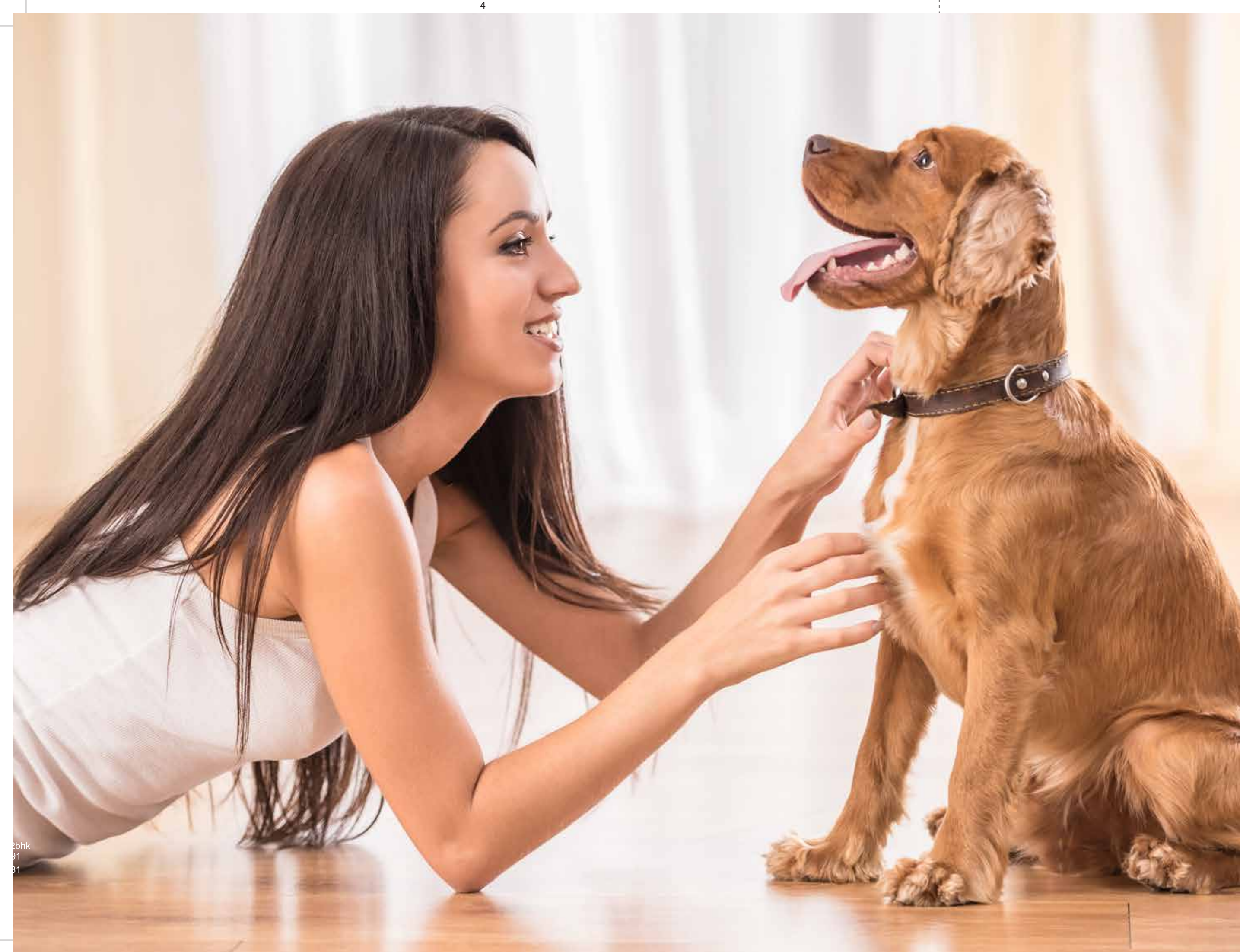
ARYA HUB, WHITEFIELD



ARYA ANANYA, WHITEFIELD

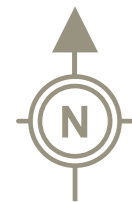


COMPLETED PROJECTS



LIVE IN GRAND COMFORT

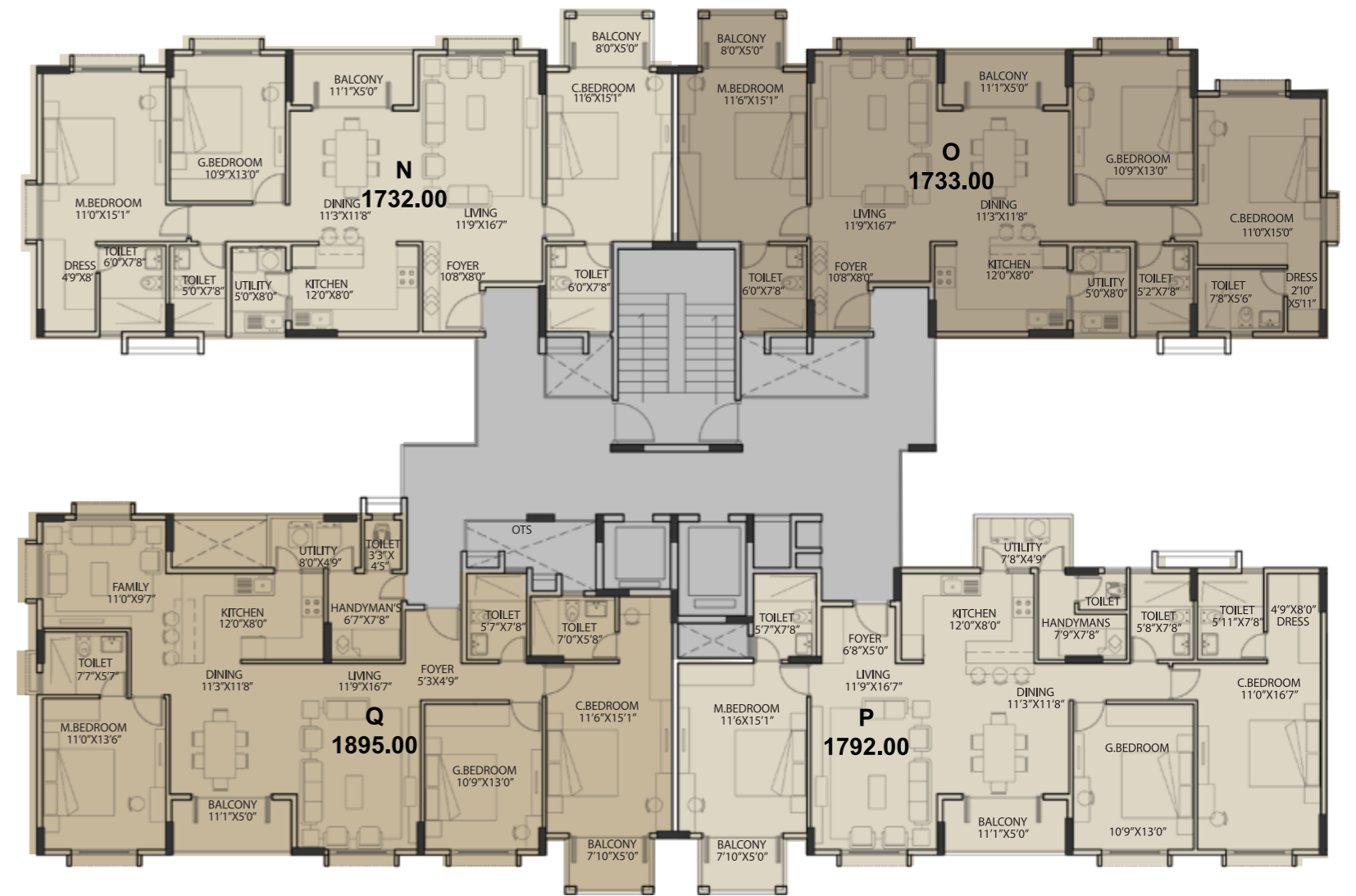
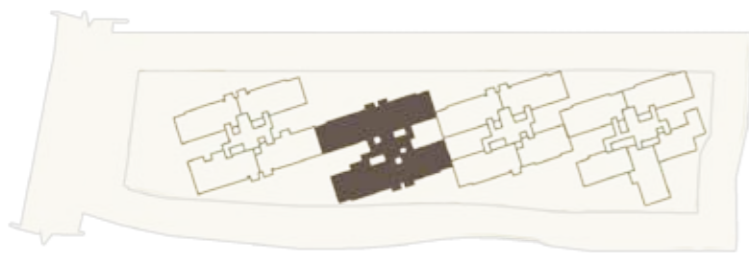
You owe yourself a good life. Arya Hamsa Grande has been conceived with this in mind. The space, the comforts, the luxuries, the amenities - everything is grand. Because what's life without everything being grand?



FLOOR PLAN
Block 3 Type : J, K, L, M

FLOOR	Typical			
TYPE	J - 3 bhk	K - 2 bhk	L - 2 bhk	M - 3 bhk+h
SBA	1713	1363	1354	1818
CARPET AREA	1239.66	928.80	940.32	1304.43
BALCONY	92.21	91.10	91.68	92.32
VERANDAH	21.41	21.74		
TERRACE	1768	872	1230	917

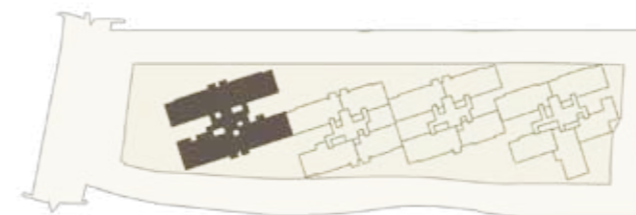
*3BHK+H - 3BHK + Handyman Room
*Terrace for Ground Floor Units only

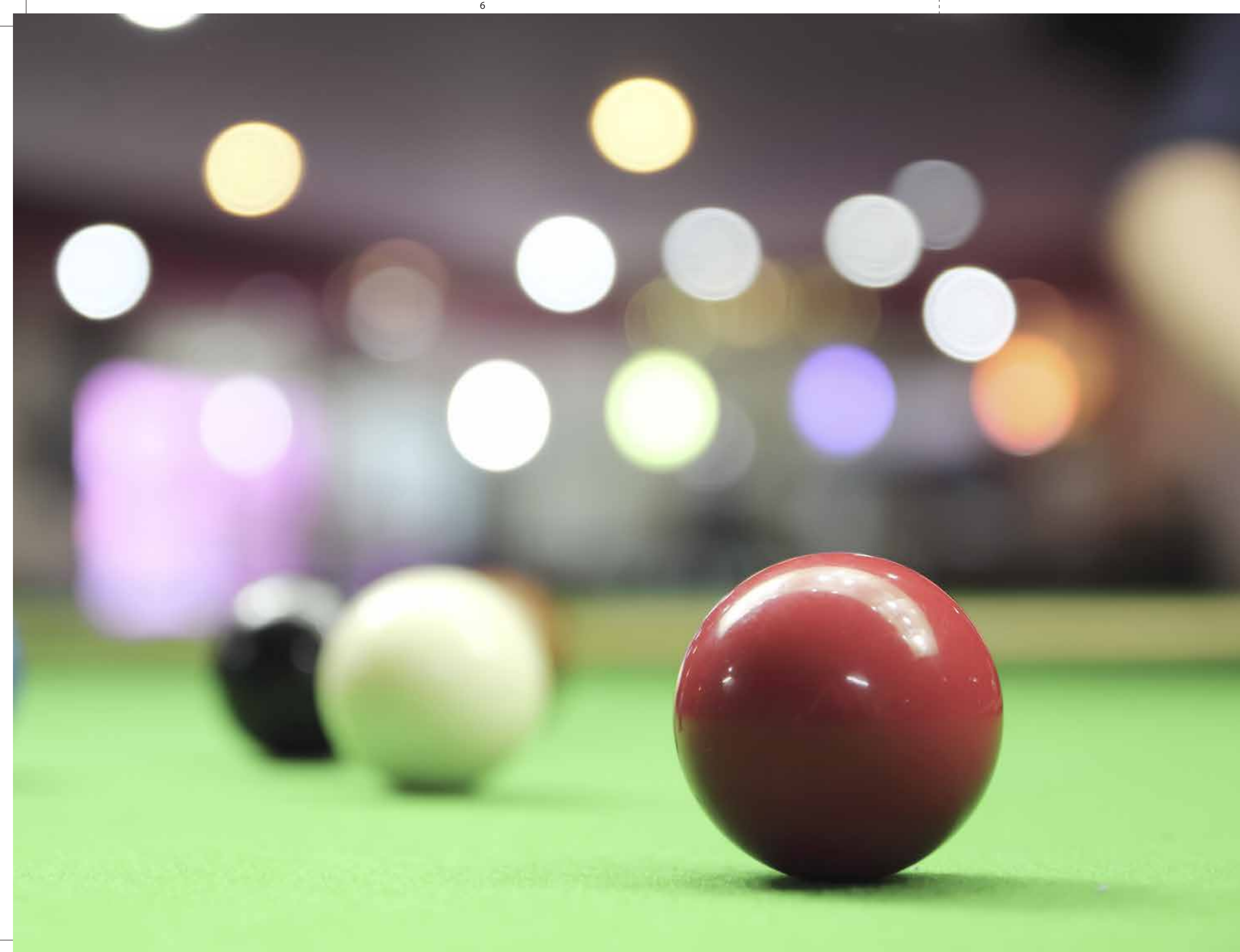


FLOOR PLAN
Block 4 Type : N, O, P, Q

FLOOR	Typical			
TYPE	N - 3 bhk	O - 3 bhk	P-3bhk+h	Q - 3 bhk+h+f
SBA	1732	1733	1792	1895
CARPET AREA	1213.84	1212.33	1285.28	1364.58
BALCONY	91.24	92.11	92.54	90.17
VERANDAH	21.09	21.74		
GROUND FLOOR		O-3bhk	P-3bhk+h	Q-2bhk+h
TERRACE	1181	463	2031	684

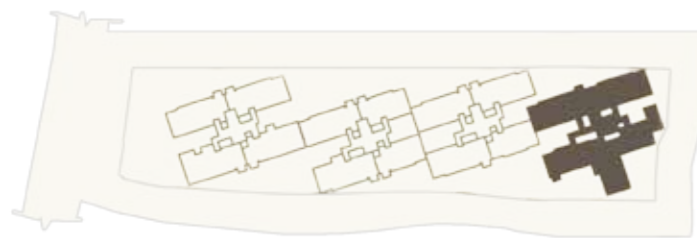
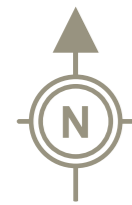
*3 BHK + H - 3BHK + Handyman Room
*3 BHK + H + F - 3BHK + Handyman Room + Family Room
*Terrace for Ground Floor Units only





CLUBHOUSE

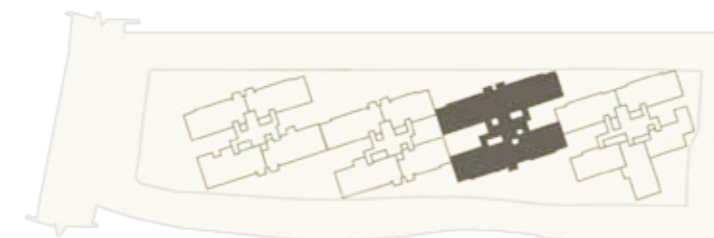
The Clubhouse has been built and is ready. It is a common facility for Arya Hamsa and Arya Hamsa Grande projects. Equipped to serve your needs with snooker, badminton, tennis, multi-purpose hall and swimming pool.



FLOOR PLAN
Block 1 Type : A, B, C, D, E

FLOOR	Typical				
TYPE	A - 3 bhk	B - 3 bhk	C - 2 bhk	D - 2 bhk	E - 2 bhk
SBA	1670	1636	1245	1314	1258
CARPET AREA	1201.03	1172.73	898.46	966.89	906.96
BALCONY	54.02	53.89	51.38	42.58	52.62
VERANDAH	22.54	21.74			
TERRACE	1148	757	861	748	878

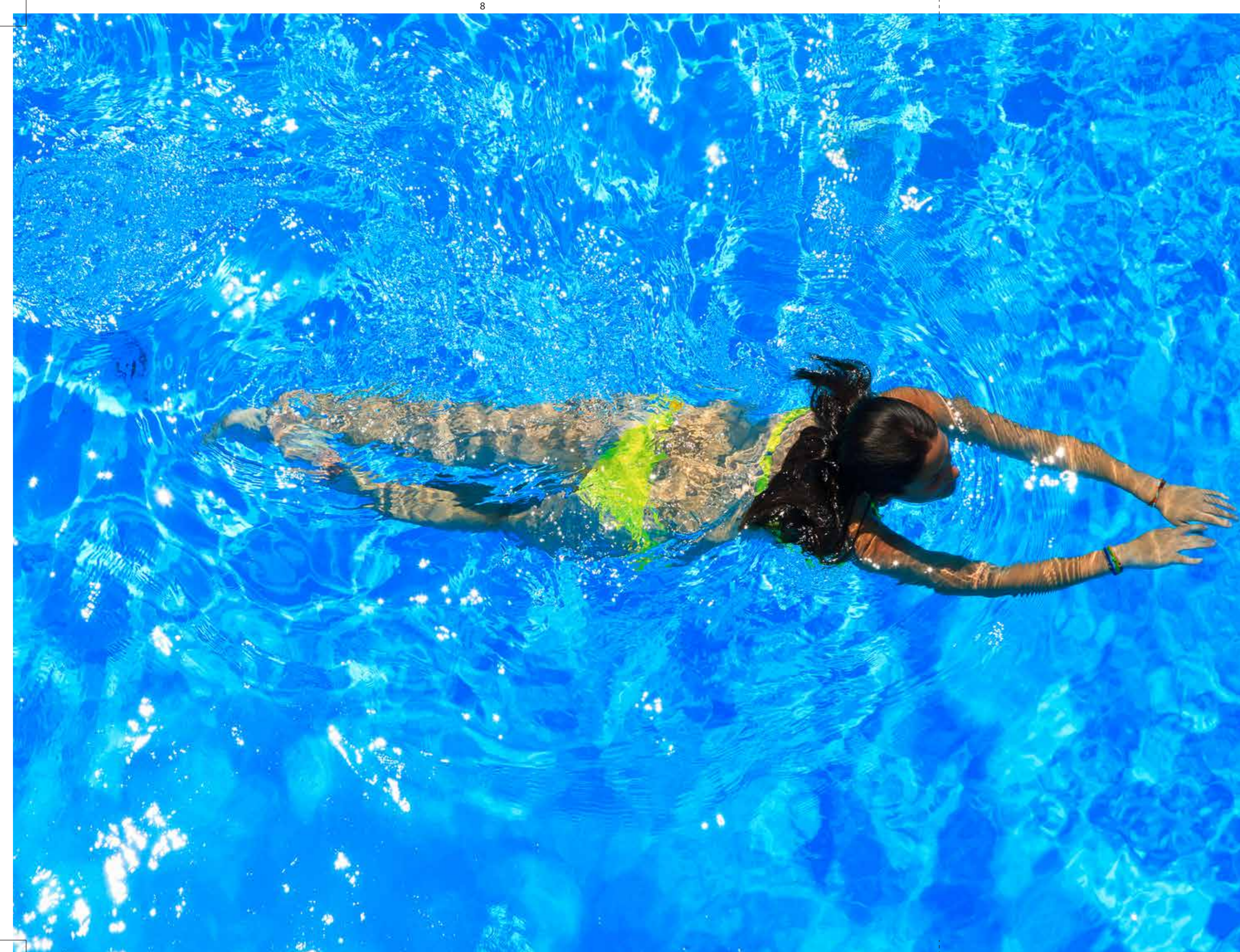
*Terrace for Ground Floor Units only



FLOOR PLAN
Block 2 Type : F, G, H, I

FLOOR	Typical			
TYPE	F - 3 bhk	G - 3 bhk	H - 2 bhk	I - 3 bhk
SBA	1720	1684	1310	1668
CARPET AREA	1201.35	1172.84	957.96	1221.48
BALCONY	92.32	92.21	56.60	53.52
VERANDAH	21.21	21.74		
TERRACE	1504	630	1535	1243

*Terrace for Ground Floor Units only



WATER THERAPY

A full-sized swimming pool with a toddler's pool is all you'll need to soothe your tired nerves. Be it a week day or a weekend.



PLANNED FOR A GRAND LIFE

Total area: 2.25 acres

No. of apartments: 162

Classification: Premium Luxury Apartments

Size: 2/3 BHK, 3 BHK with Family & Handyman room

1245 sq ft - 1895 sq ft (Carpet area 898.46 sq.ft. to 1364.58 sq.ft.)
















As you scan through our plans, you'll realise that Arya Hamsa Grande has been designed for you. Giving utmost importance to your comforts and your privacy. After all, it's the space where you'd want to enjoy life.

MASTER PLAN

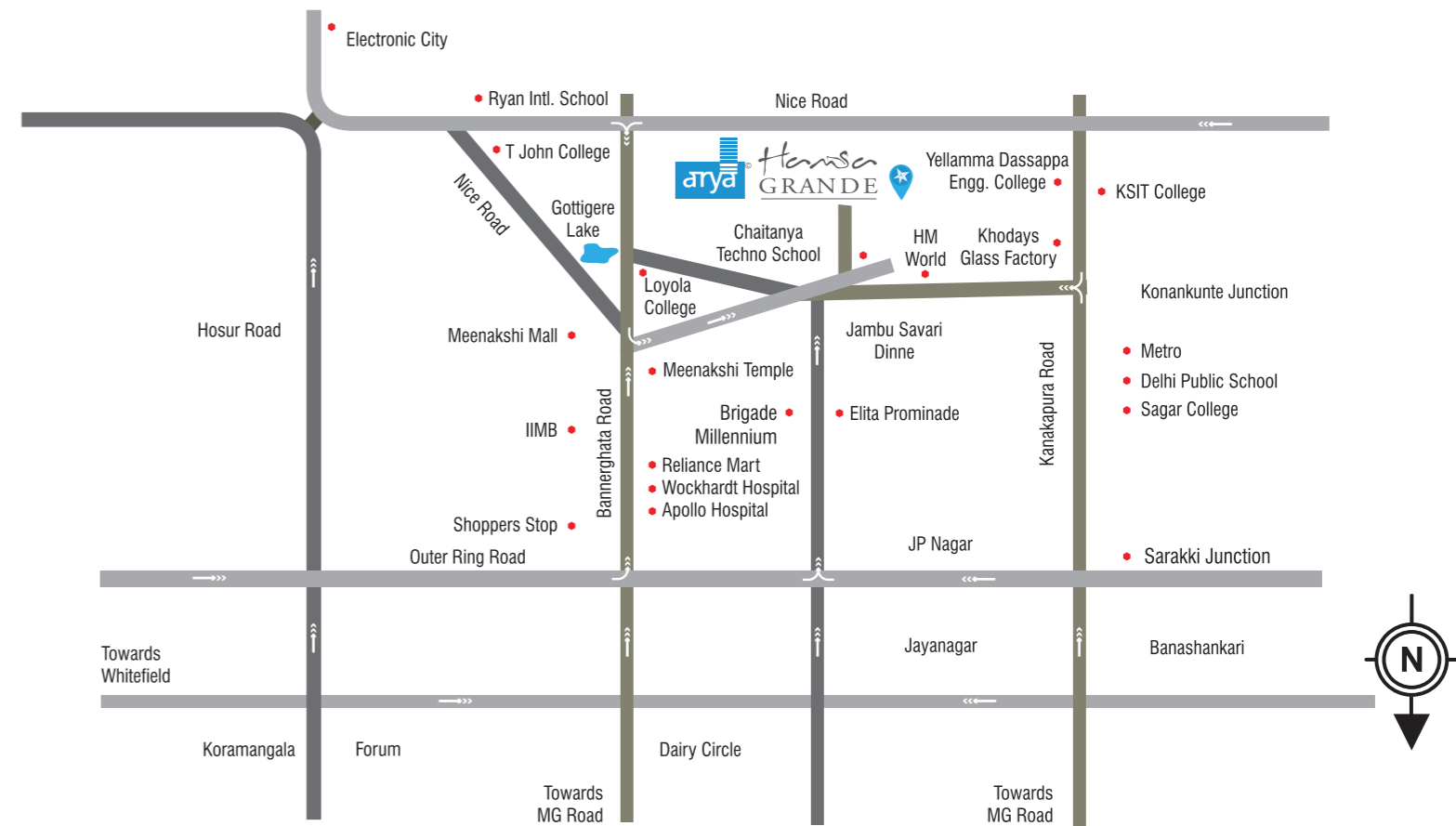
40 Feet Wide Road	1
Entry / Exit	2
Security	2a
Private Terrace Garden (G.F.)	3
Children's Play Area*	5
Driveway / Green Space*	6
Tennis Court*	8
Ramp Up	9
Fire Driveway	10
Boulevard / Landscape Area*	11
Landscape Area	12
60 Feet Wide Road	13
Stilt and G.F.	14
3 Bedroom Unit	15
2 Bedroom Unit	16
Block 1	23
Block 2	24
Block 3	25
Block 4	26
Swimming Pool*	27
Swimming Pool Deck*	28
Auditorium*	29
Multi-purpose Hall (S.F) Gymnasium (F.F)*	30
Badminton Court*	31

*Common facility to Arya Hamsa and Arya Hamsa Grande

A DETAILED ACCOUNT

 <p>STRUCTURE</p> <p>RCC Framed Structure, external & internal walls of solid concrete blocks, external walls with cement plaster & internal walls with cement plaster finished smooth with lime.</p>	 <p>FLOORING</p> <p>Vitrified tiles for living / dining, bedrooms and kitchens. Wooden flooring for Master Bedroom. Anti-skid tiles for toilets, balconies & utility.</p>	 <p>LOBBY & STAIRCASE</p> <p>A combination of granite and ceramic tiles. Granite with vitrified cladding for lift fascia.</p>	
 <p>DOORS & WINDOWS</p> <p>Main doors: Teak wood frame with HDF moulded design shutter. Internal doors: Hardwood frame with HDF moulded design door shutters. Windows: UPVC Windows with grill for safety.</p>	 <p>KITCHEN</p> <p>Granite cooking counter with stainless steel sink. Glazed tile dadoing of 2 ft. Provision for chimney / exhaust.</p>	 <p>TOILETS</p> <p>Anti skid tile flooring and glazed tile dadoing upto 7 ft. height. Sanitary ware of Parry or equivalent make. Chrome plated taps of Jaguar or equivalent make. False ceiling with grid panels.</p>	 <p>WALL FINISHES</p> <p>Internal Walls: Oil bound distemper for all smooth walls and ceilings. External Walls: Exterior emulsion on all rough walls.</p>
 <p>ELECTRICAL</p> <p>In concealed conduits with copper wiring of Anchor/KEI/RR cable equivalent make. Elegant modular switches of Schneider/Crabtree/ Anchor ELCBs and MCBs for safety or equivalent make. ELCB's and MCB's for safety 3 KVA power provided for 2 BHK apartments 5 KVA power provided for 3 BHK apartments</p>	 <p>ELCB AND MCB FOR SAFETY</p>	 <p>GENERATOR</p> <p>Backup power for all common services in addition to 1 KVA for 2 BHK, 1.5 KVA for 3 BHK apartments for lighting circuits.</p>	 <p>WATER SUPPLY</p> <p>Underground and overhead storage tanks of suitable capacity. Borewell as an auxiliary source of water supply</p>
 <p>LIFTS</p> <p>Two Schindler/equivalent mke passenger lifts for each block.</p>	 <p>AMENITIES</p> <p>Swimming pool, Auditorium, Tennis Court, Badminton Court, Indoor Games Room, Children's play area, Landscaped garden, Full Fledged Club house with well equipped gymnasium, Multipurpose Hall for all indoor parties, Jogging Track, Library (provision)</p>	 <p>SECURITY SYSTEM</p> <p>Round the clock security with provision for intercom facility to each apartment</p>	 <p>WATER SOFTENER & SEWAGE TREATMENT PLANT*</p> <p>ORGANIC WASTE CONVERTER*</p> <p>*Common to Arya Hamsa and Arya Hamsa Grande</p>

LOCATION MAP



(Note: all the specifications and amenities mentioned above are subject to change and any decisions that may be taken from time to time by the Architects / Engineers appointed by the Developer shall be final and binding as regards to specifications and amenities and/or fixtures and fittings provided therein.)



APPROVED BY All leading banks including KVB, SBI, HDFC, ICICI, Axis & LIC HFL
PROJECT FINANCED BY The Karur Vysya Bank

Corporate Office: Arya Group, # 181, Intermediate Ring Road, Amarjyothi Layout, Domlur, Bangalore 560 071. Ph: +91 80 2535 7547.
For Sales Enquiry: 77609 99134, 99000 81675, 97413 59994, 080 4640 6999 | Email: sales@thearyagroup.in www.thearyagroup.in