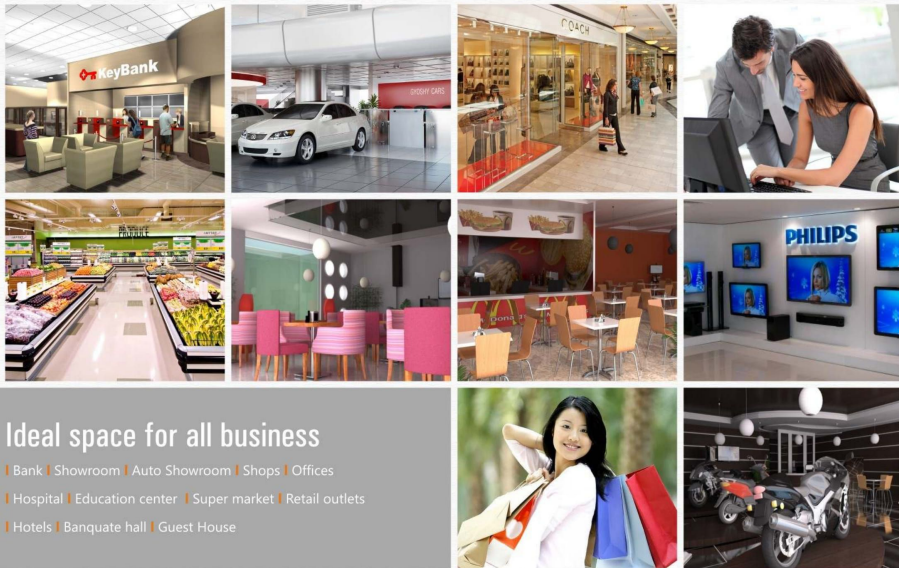


exclusive commercial  
complex @ gandhinagar



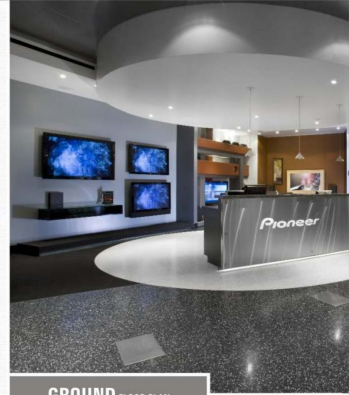
प्रमुख  
cYprus



## Ideal space for all business

- | Bank | Showroom | Auto Showroom | Shops | Offices
- | Hospital | Education center | Super market | Retail outlets
- | Hotels | Banquate hall | Guest House



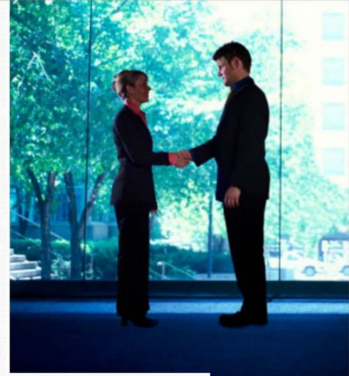
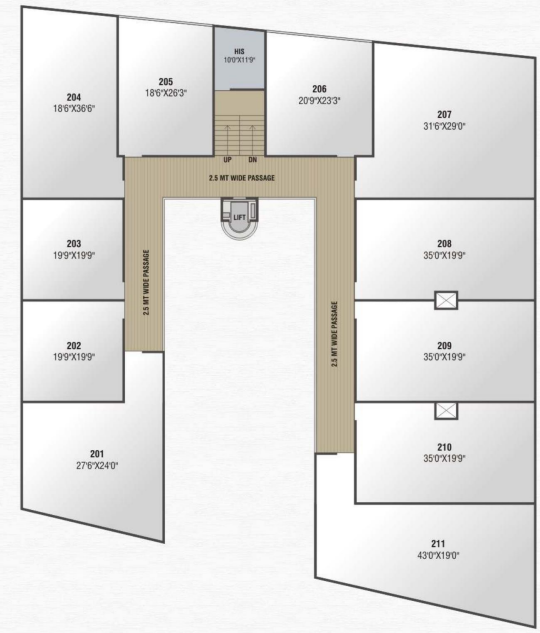
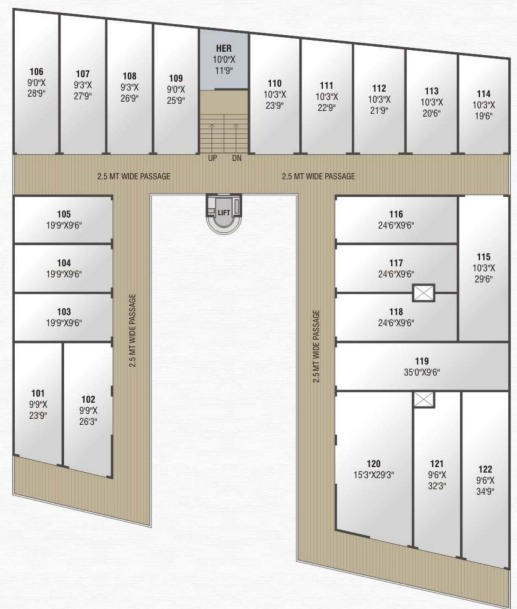


GROUND FLOOR PLAN





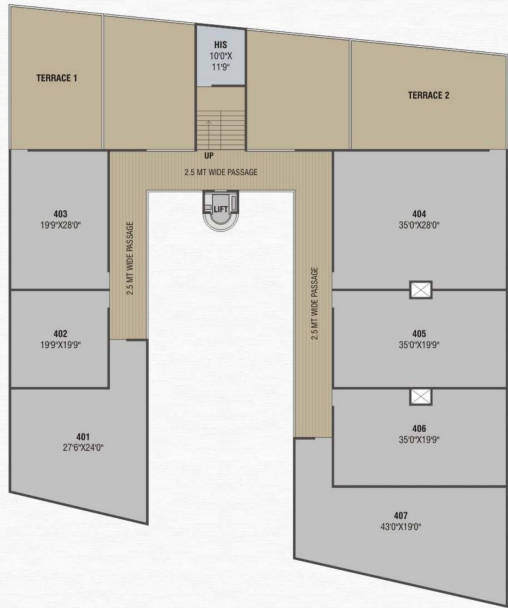
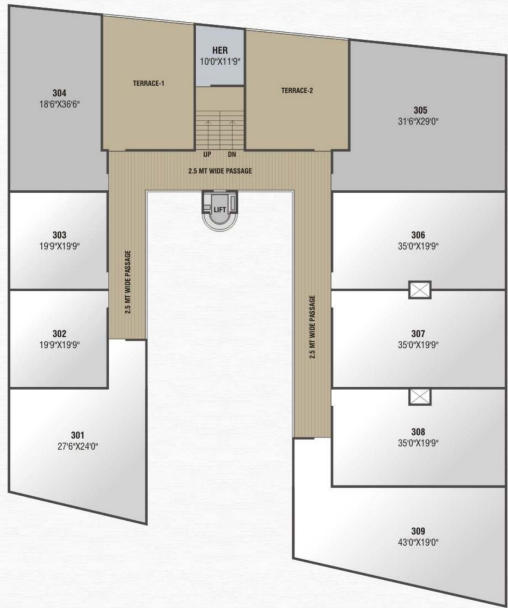
1st FLOOR PLAN



2nd FLOOR PLAN



3rd FLOOR PLAN



4th FLOOR PLAN



Site : F.P. No.148, T.P.No.6  
Nr. Rajdhani Bungalows, Shahpur-Sargasan Road,  
Gandhinagar.

### Specifications

#### Structure

Earthquake resistance R.C.C. structure & brick wall.

#### Wall finish

Internal smooth plaster with white putty & External surface in Textured finish with paint.

#### Shops

Good quality Rolling shutter with oil paint.

#### Flooring

Good quality Vitrified tile flooring in entire unit.

#### Parking

Sufficient Parking on Open Margin Area on Ground floor & Basement.

#### Electrification

Concealed copper wiring & good quality accessories with sufficient electric points .

#### Lift

Branded Automatic Capsule Lift for easy accessibility.

Developer :

**PSY Group ( Nilay Desai )**

**Cheque in favour of PSY Associates**

704, 7th floor, Pratik Mall, Near Swaminarayan Dham, Koba-Gandhinagar High way,  
Gandhinagar 382421. Gujarat. (INDIA) Phone : 079- 2360 0158

**Web** : [www.psyprojects.com](http://www.psyprojects.com) ● [www.psy-group.com](http://www.psy-group.com),

**E-mail** : [info@psy-group.com](mailto:info@psy-group.com) ● [psyprojects@yahoo.in](mailto:psyprojects@yahoo.in)

**Partners**

**Maresh Prajapati - 98792 04165**

**Rajesh Patel - 98245 45213**

We Welcome your inquiry, Suggestions & feedback

**90991 69633 - Sanjay Thakkar**

**98246 03432 - Jayesh Prajapati**

**90990 34145 - Kiran Desai**

Architect

**Grey Leaf ( Arpit Shah )**

Structure Engineer

**Torsion ( Vasant Soni )**

RERA Registration No. PR / GJ / GANDHINAGAR / GANDHINAGAR / OTHERS / CAA01445 / 300118

**Specific Notes**

● Developers reserves the rights for alteration of specifications and design. ● External & internal changes are not allowed. ● All dimensions / area are approximate, average & subject to variations. ● Membership of member will be cancelled automatically without any prior notice, if any member will be unable to make payment in time & deposited amount will be refunded after new booking with 10% deduction of total amount as administration charge. ● GEB, GUDA, Legal expenses, Service Tax & other GOVT. Charges if any, Stamp duty, Registration fees & Maintenance deposit shall be borne by the members. ● All areas & dimensions are without plaster work. ● This brochure is not to be treated as part of the legal document it is only for easy display of the project.