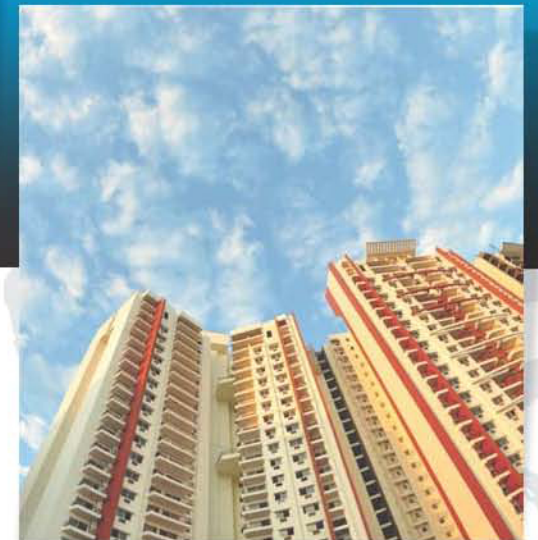




SOLID FOUNDATION FOR GOOD LIVING

 **LANDCRAFT**  
**GOLF LINKS**  
NH-24, Ghaziabad  
FLATS • VILLAS • PLOTS



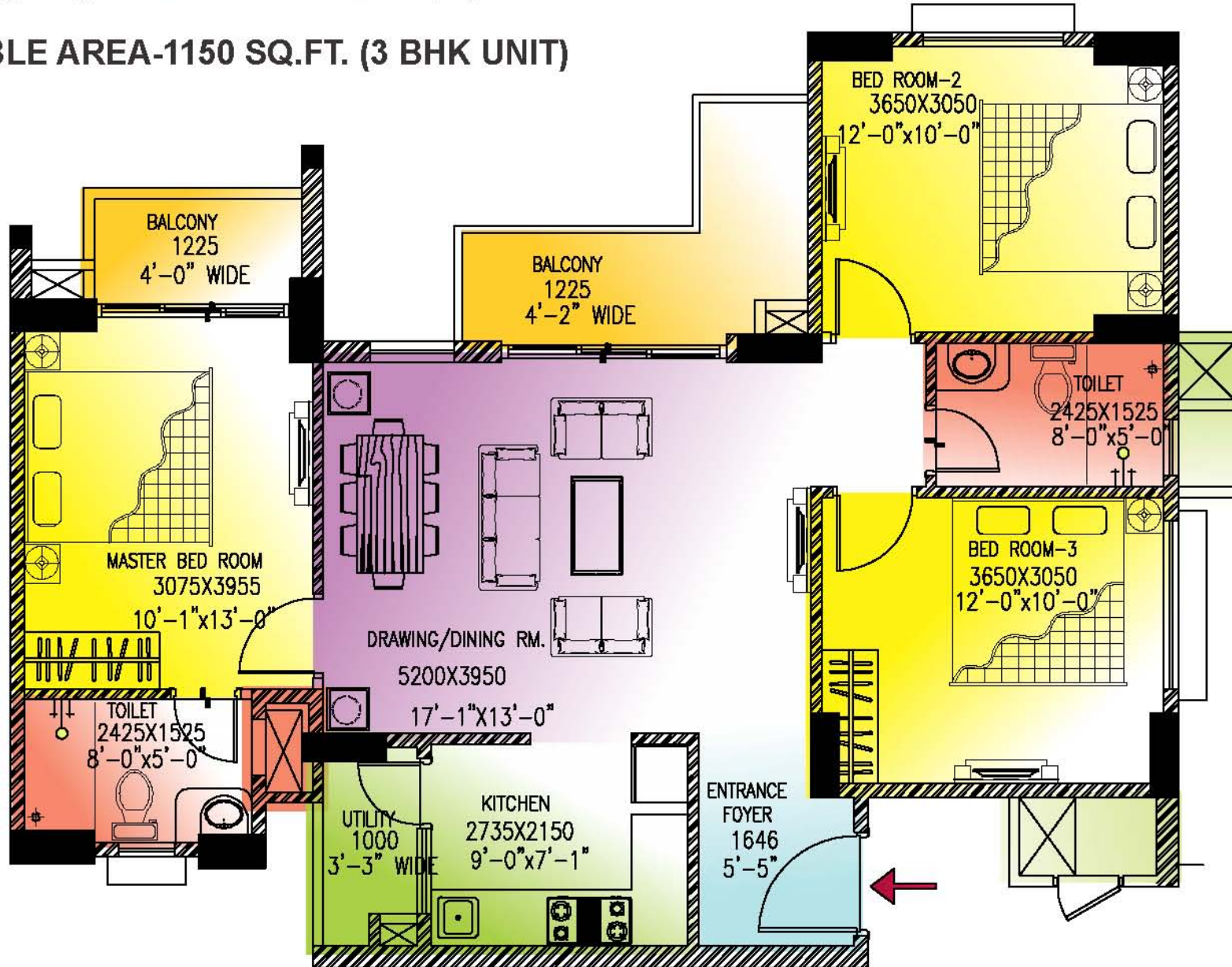
# Elevate your Lifestyle



Actual Site Photo

# FLOOR PLANS

SALEABLE AREA-1150 SQ.FT. (3 BHK UNIT)

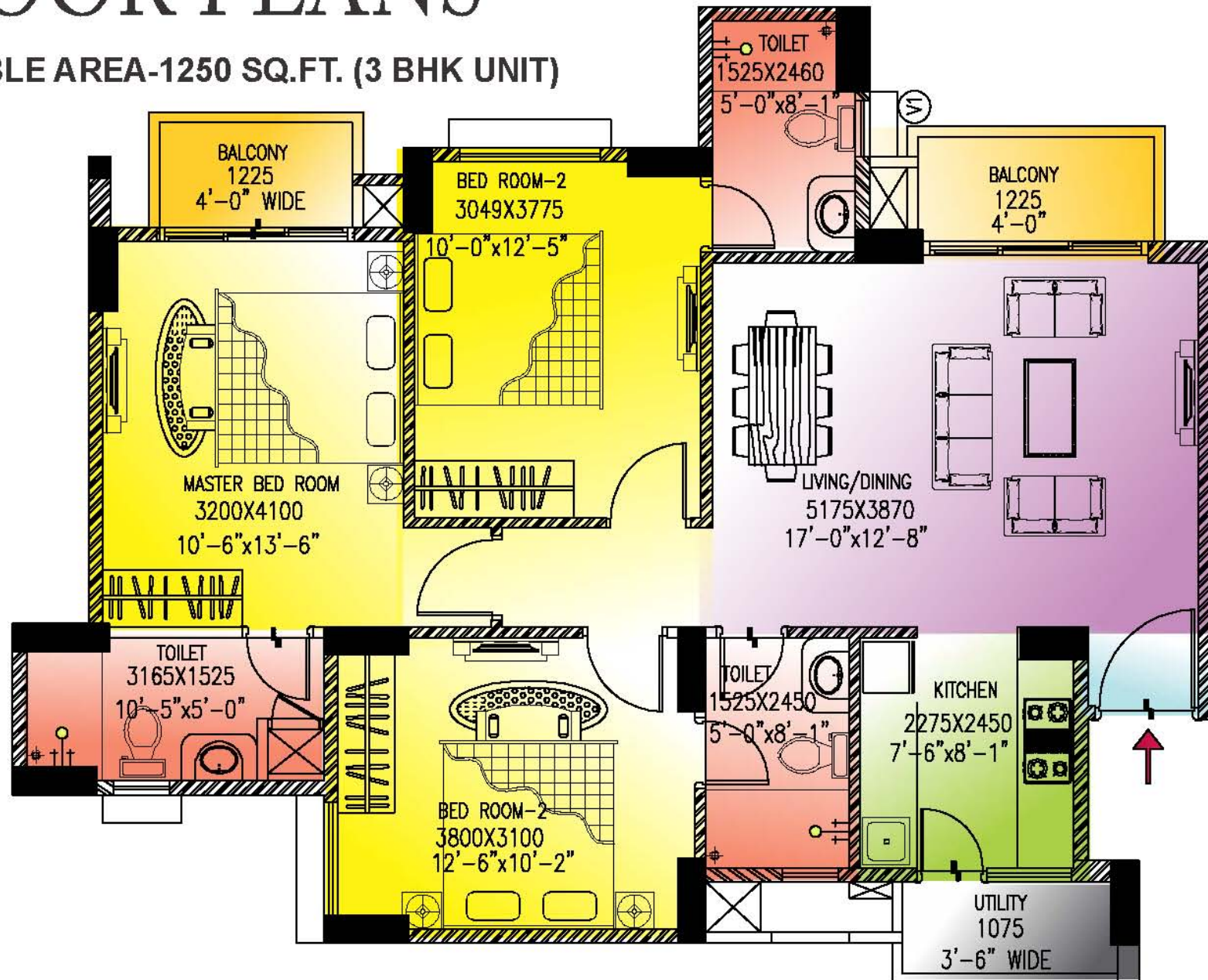


■ Foyer 
 ■ Living & Dining 
 ■ Bedrooms 
 ■ Kitchen 
 ■ Balcony 
 ■ Utility Room/ Servant 
 ■ Toilet

\*The catalogue shows all feet inches dimensions in mm for your easy understandability

# FLOOR PLANS

SALEABLE AREA-1250 SQ.FT. (3 BHK UNIT)

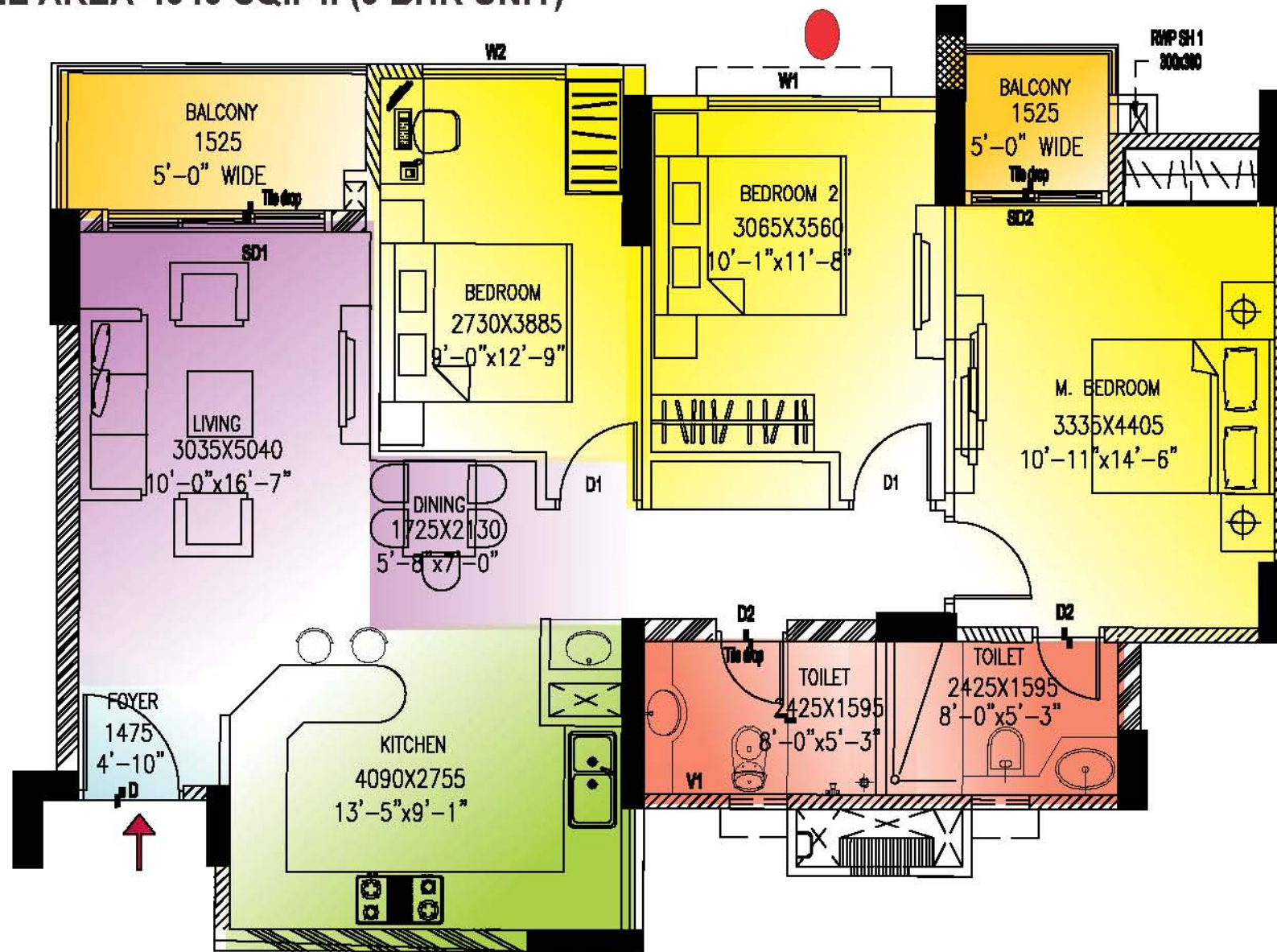


Foyer Living & Dining Bedrooms Kitchen Balcony Utility Room/ Servant Toilet

\*The catalogue shows all feet inches dimensions in mm for your easy understandability

# FLOOR PLANS

SALEABLE AREA-1315 SQ.FT. (3 BHK UNIT)

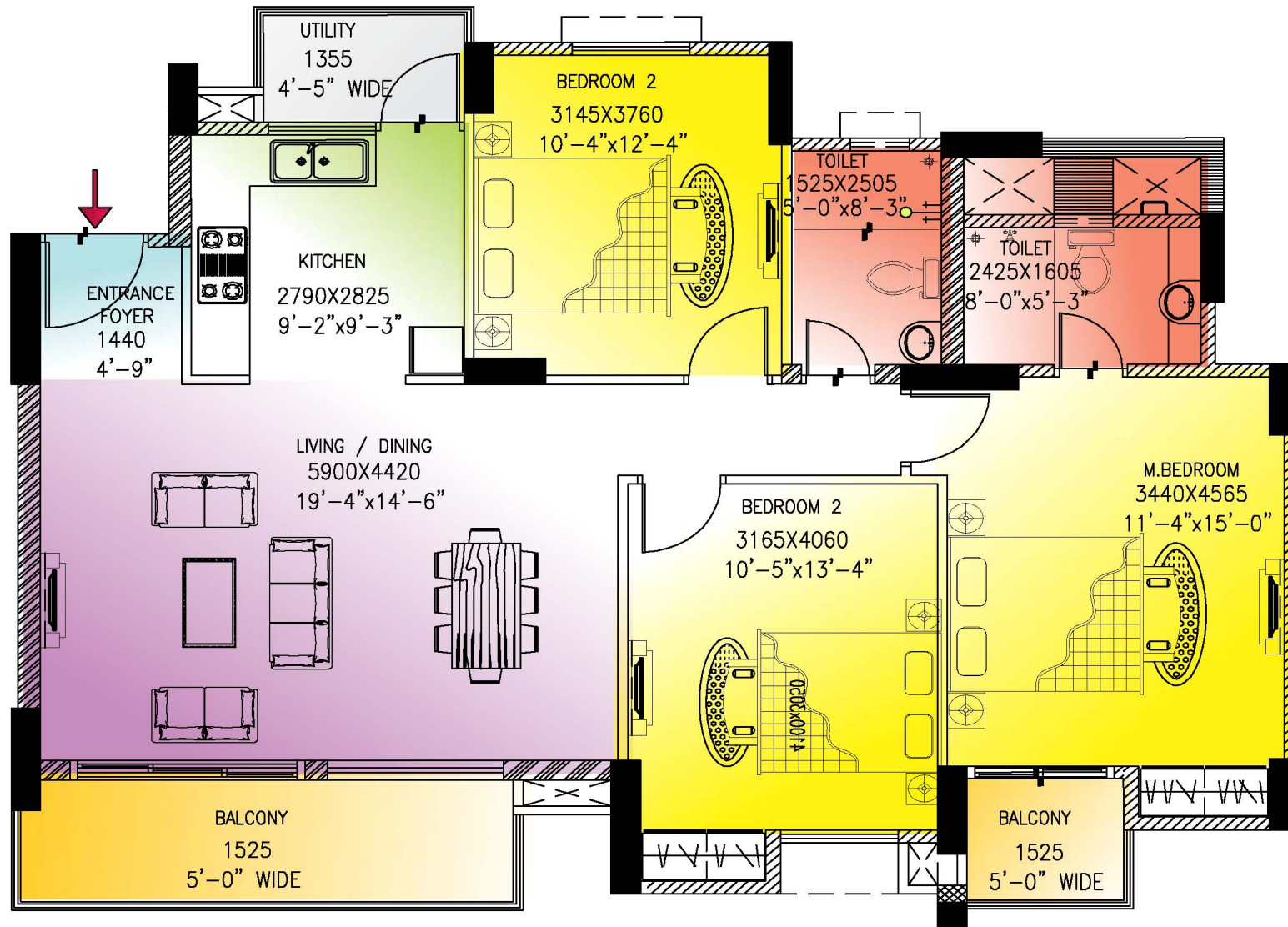


■ Foyer 
 ■ Living & Dining 
 ■ Bedrooms 
 ■ Kitchen 
 ■ Balcony 
 ■ Utility Room/ Servant 
 ■ Toilet

\*The catalogue shows all feet inches dimensions in mm for your easy understandability

# FLOOR PLANS

SALEABLE AREA-1470 SQ.FT. (3 BHK UNIT)

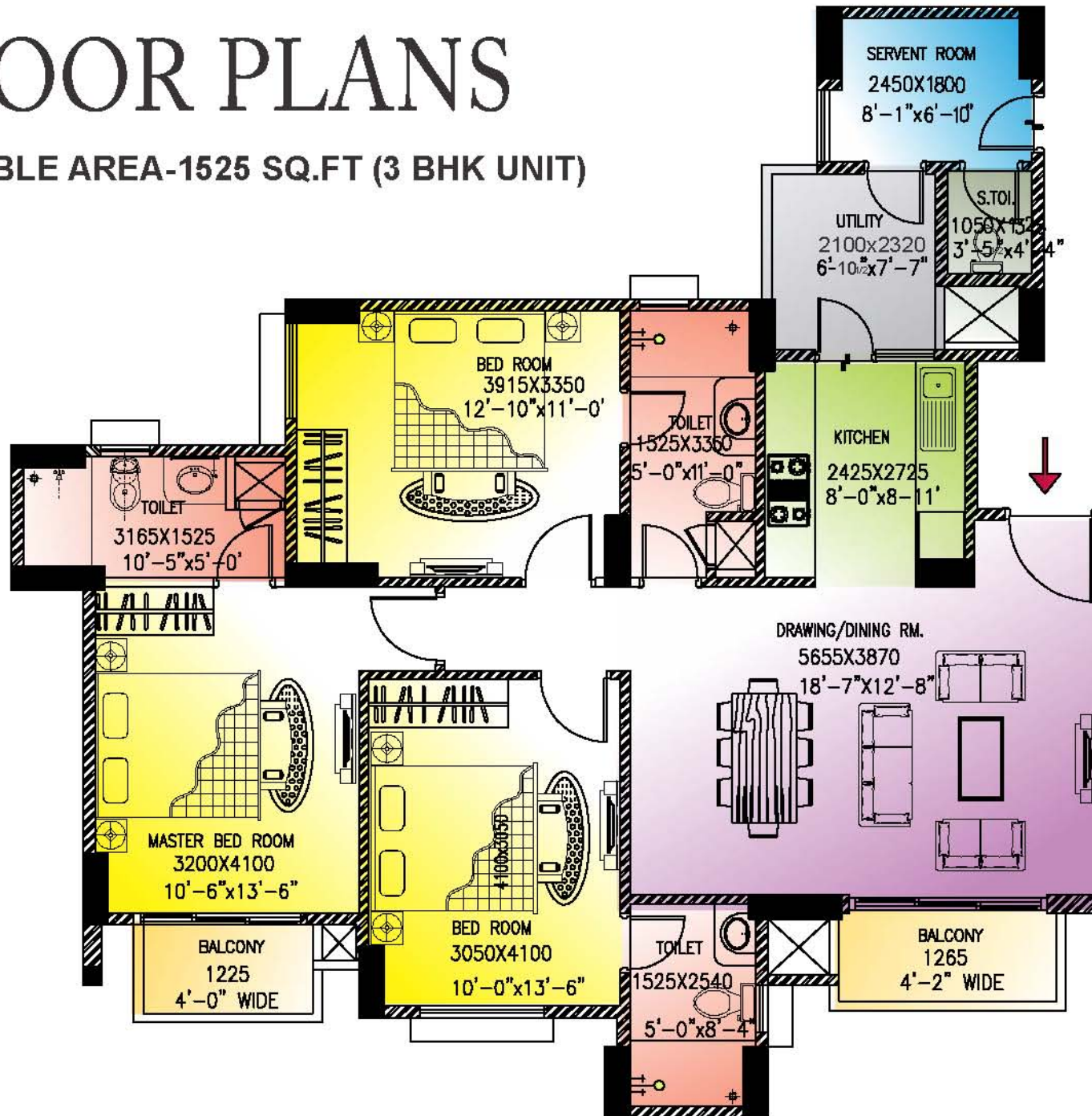


■ Foyer 
 ■ Living & Dining 
 ■ Bedrooms 
 ■ Kitchen 
 ■ Balcony 
 ■ Utility Room/ Servant 
 ■ Toilet

\*The catalogue shows all feet inches dimensions in mm for your easy understandability

# FLOOR PLANS

SALEABLE AREA-1525 SQ.FT (3 BHK UNIT)

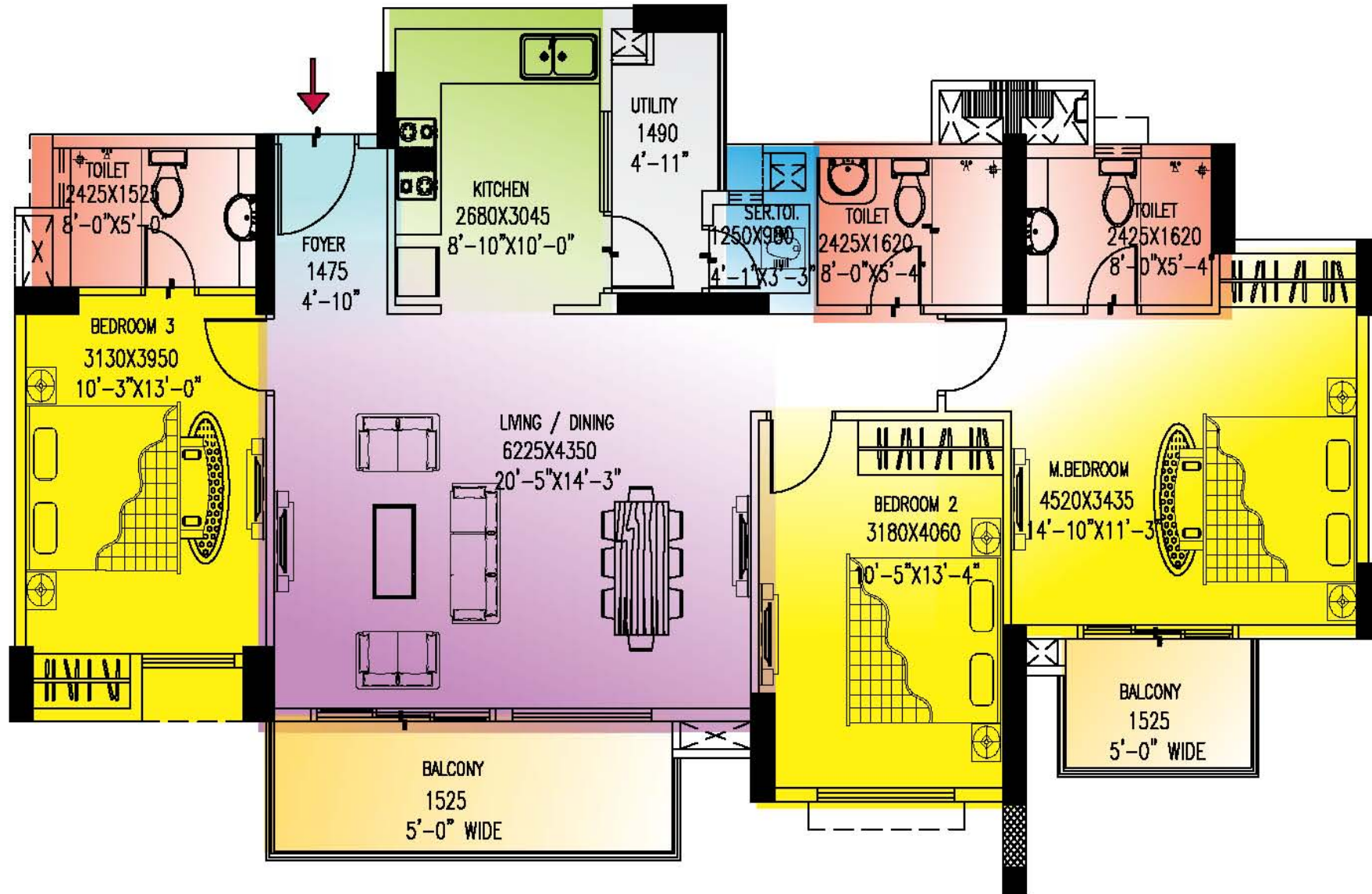


■ Foyer 
 ■ Living & Dining 
 ■ Bedrooms 
 ■ Kitchen 
 ■ Balcony 
 ■ Utility Room/ Servant 
 ■ Toilet

\*The catalogue shows all feet inches dimensions in mm for your easy understandability

# FLOOR PLANS

SALEABLE AREA-1630 SQ.FT. (3 BHK UNIT)



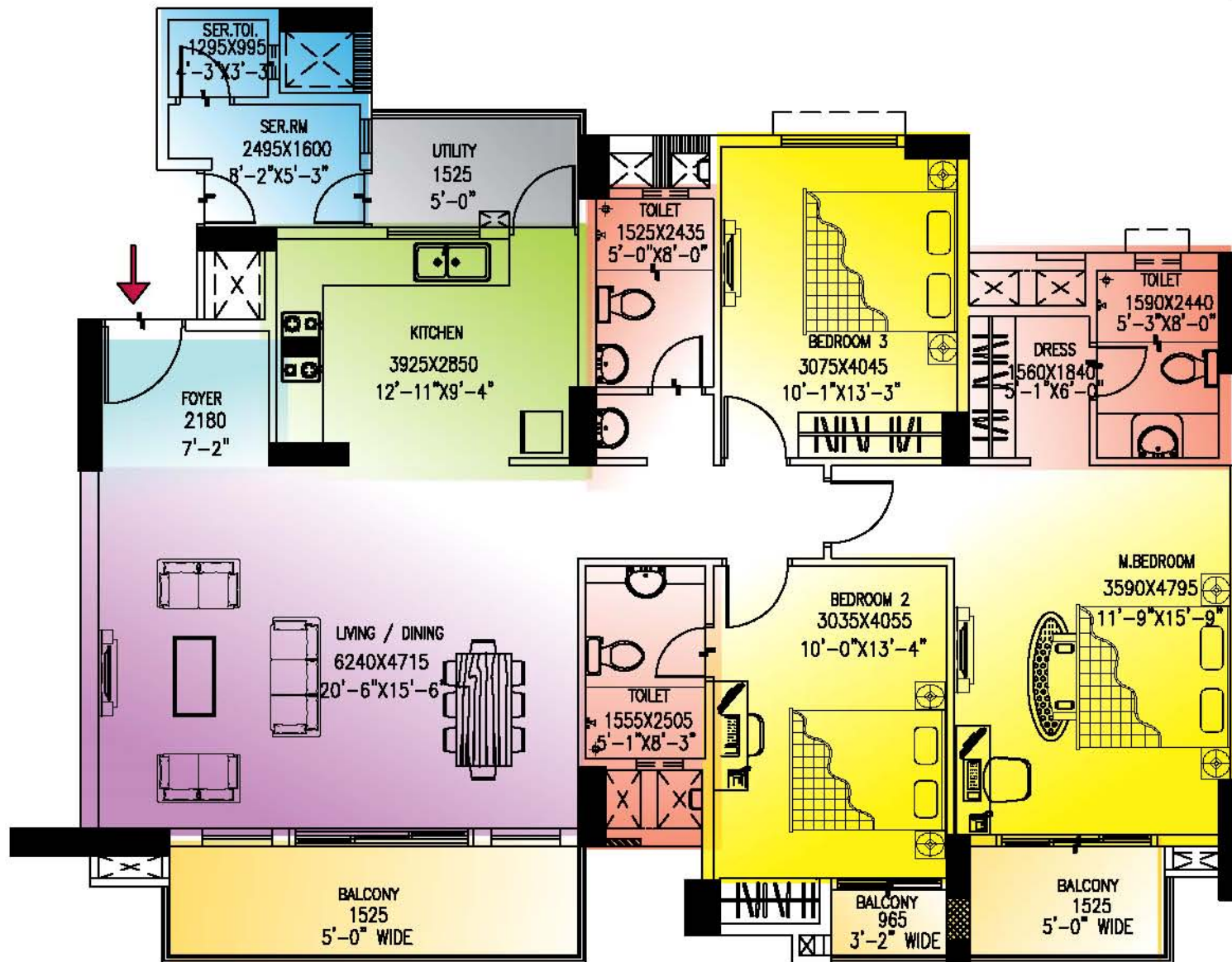
Foyer Living & Dining Bedrooms Kitchen Balcony Utility Room/ Servant Toilet

\*The catalogue shows all feet inches dimensions in mm for your easy understandability



# FLOOR PLANS

SALEABLE AREA-1880 SQ.FT. (3 BHK UNIT)

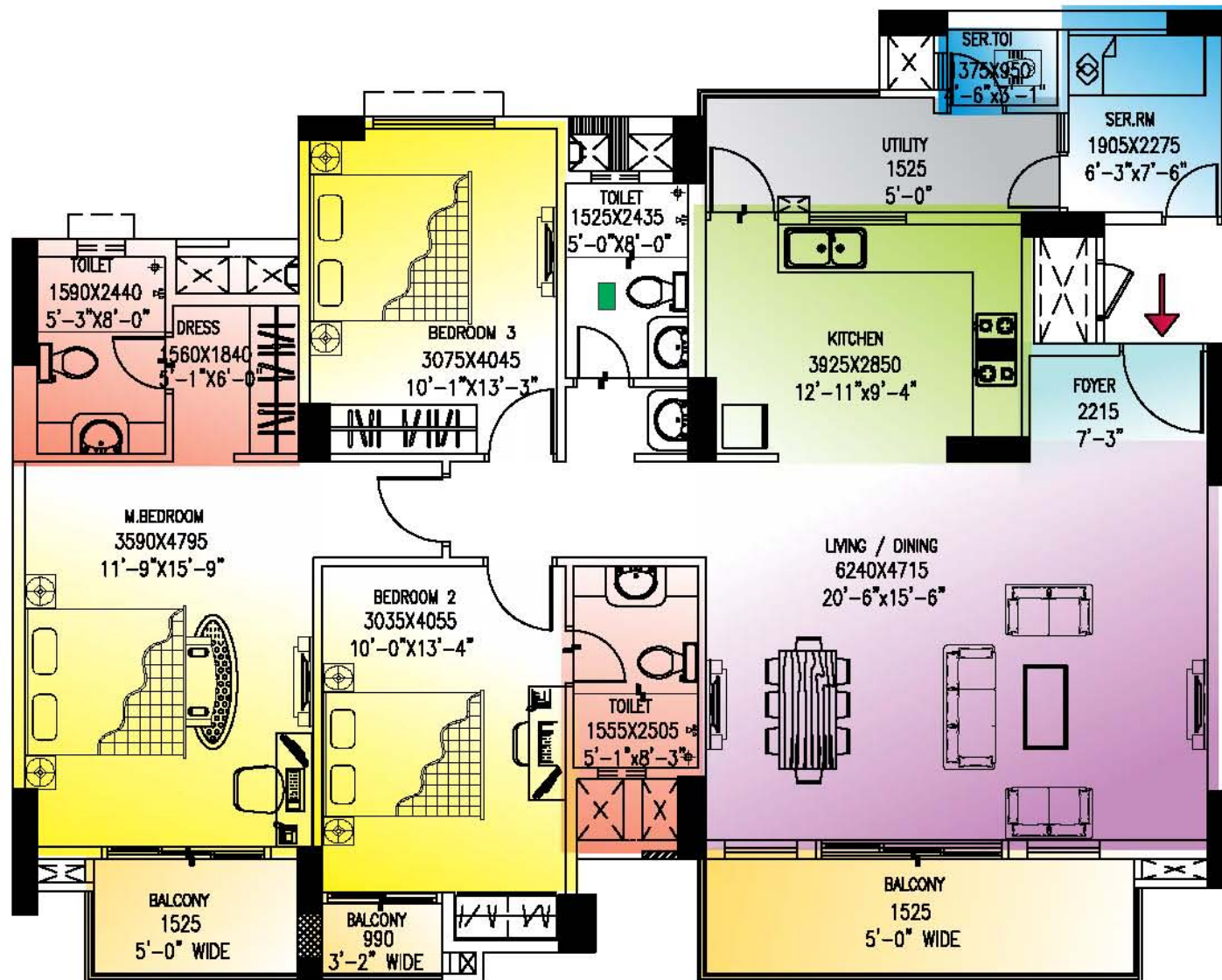


■ Foyer 
 ■ Living & Dining 
 ■ Bedrooms 
 ■ Kitchen 
 ■ Balcony 
 ■ Utility Room/ Servant 
 ■ Toilet

\*The catalogue shows all feet inches dimensions in mm for your easy understandability

# FLOOR PLANS

SALEABLE AREA-1895 SQ.FT. (3 BHK UNIT)

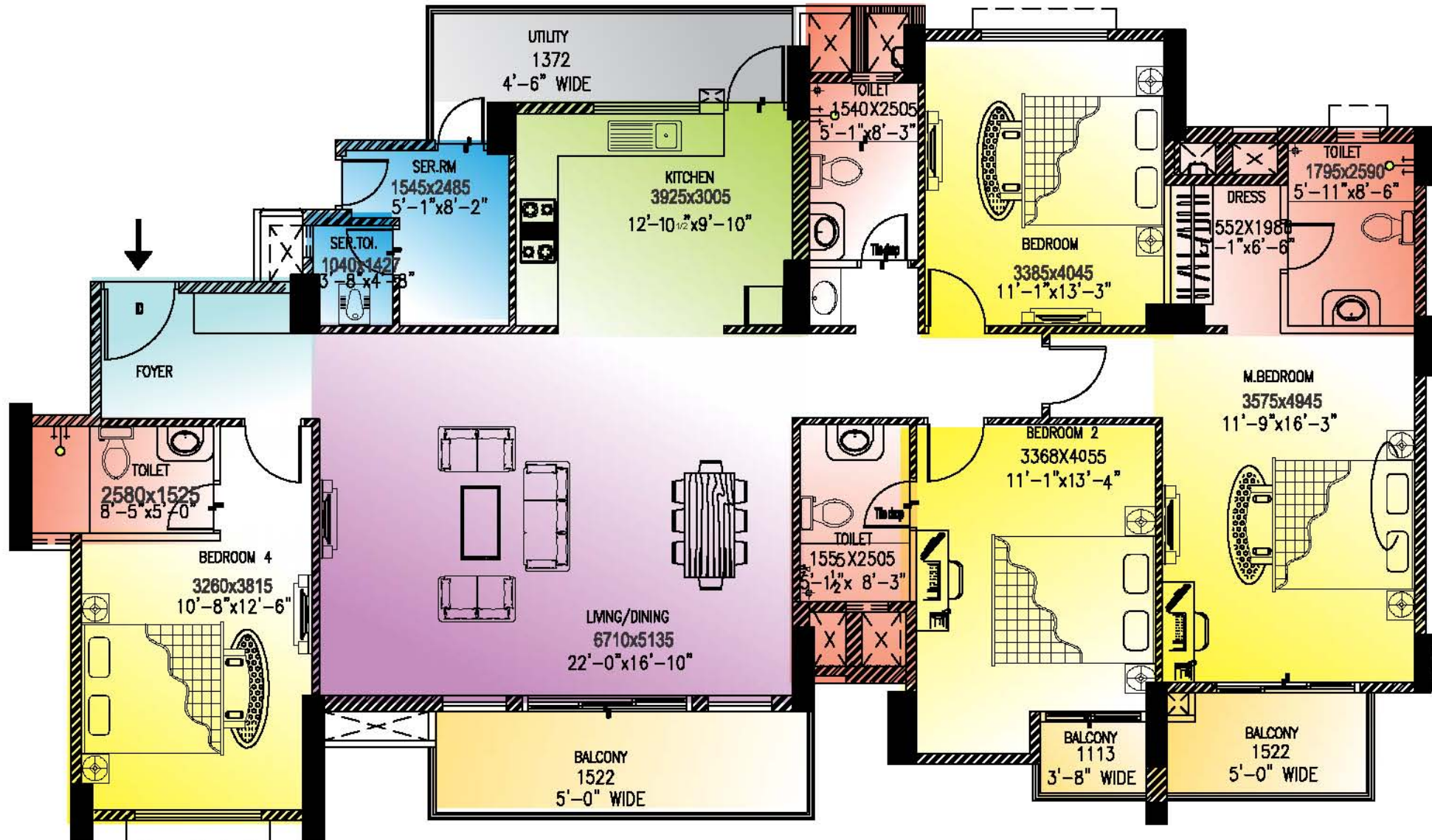


■ Foyer 
 ■ Living & Dining 
 ■ Bedrooms 
 ■ Kitchen 
 ■ Balcony 
 ■ Utility Room/ Servant 
 ■ Toilet

\*The catalogue shows all feet inches dimensions in mm for your easy understandability

# FLOOR PLANS

SALEABLE AREA-2370 SQ.FT. (4 BHK UNIT)



■ Foyer 
 ■ Living & Dining 
 ■ Bedrooms 
 ■ Kitchen 
 ■ Balcony 
 ■ Utility Room/ Servant 
 ■ Toilet

\*The catalogue shows all feet inches dimensions in mm for your easy understandability

# Live Life Luxuriously!

Perfectly fused with luxury, sophistication and nature,  
Golf Link is being created with passion that matches  
your undying desire for an elegant life!

Be it graceful apartments, superlative environment  
and luxurious facilities, everything at  
Golf Links exudes rich taste!

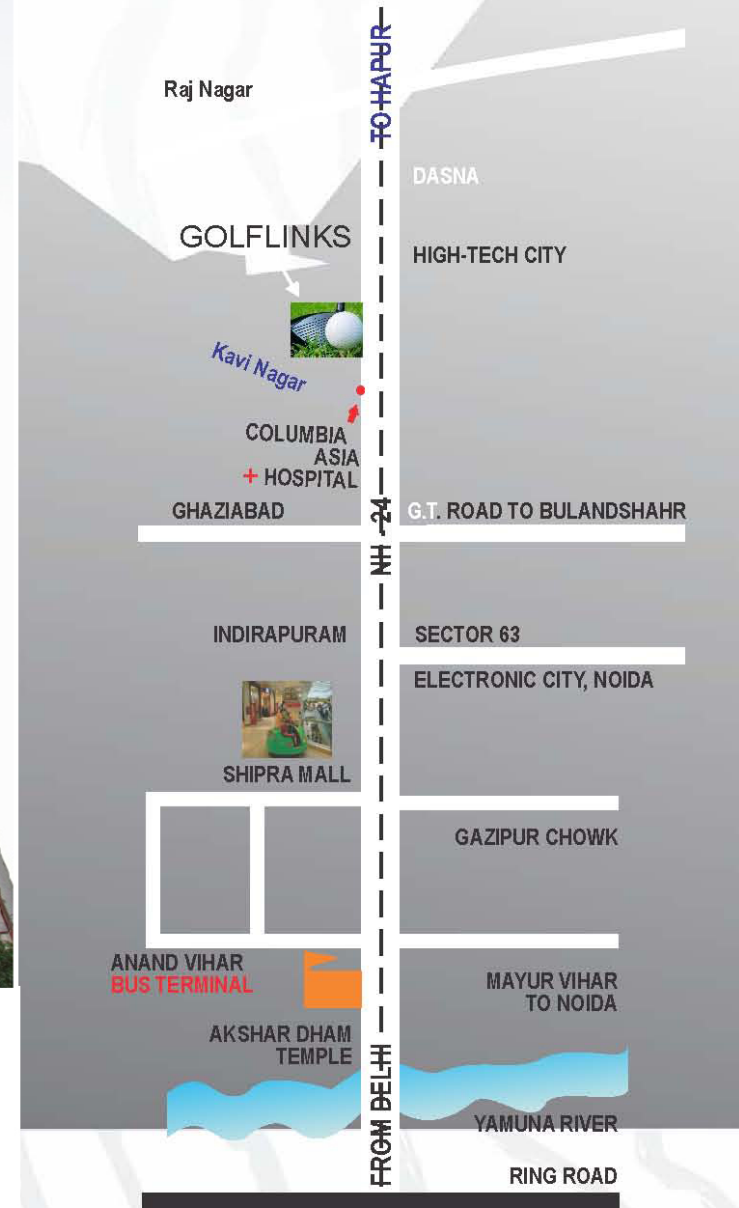
Artistic Impression



Garg Group



## LOCATION MAP



### Landcraft Developers Pvt. Ltd.

**Corporate Office** - Golf Links, NH-24, Near Columbia Hospital, Village Mehrauli, Paragna Dasna, Tehsil & District Ghaziabad, Uttar Pradesh - 201002

Sales: +91-8585900157, Office +91-120-4185000, Info@Landcraft.In

**Registered Office** - Parmesh Corporate Tower, 309, IIIrd Floor

Plot No.13, Karkardooma Community Center, Delhi-110092

GolfLinks Marketing: 8882131010, SMS 'LGL' 56161

CIN No. : U45201DL2005PTC132131

Visuals representation in this brochure is purely conceptual. All building plans, Specifications, Layout Plans etc. are tentative & subject to variation & modification by the company or by competent regulatory authorities sanctioning plans. Brand names appearing in the brochure are for artwork purpose only.

Brochure Design (In-house Design-LandCraft)