

"ASPIRE AN ORGANIC WORLD TO LIVE IN"

# ARIHANT ASPIRE

— PALASPE - PANVEL —

"THE CENTRE OF NEXT NAVI MUMBAI"



A Project By

**ARIHANT**  
SUPERSTRUCTURES LTD.  
CONTINUING STABILITY

[www.asl.net.in](http://www.asl.net.in)

Project Funded by:



Construction by:



Architect:



**Call.: 022 6230 2222**

**Site Off.:** Palasphe Phata, on Mumbai-Goa Road, Panvel.

**Corporate Off.:** Arihant Aura, Floor No. 25, Plot No 13/1 – TTC Industrial Area,  
Thane Belapur Road, Turbhe MIDC, Turbhe, Navi Mumbai, Maharashtra - 400 705.  
TEL.: 022 6249 3333 | Email: [sales@asl.net.in](mailto:sales@asl.net.in) | SMS 'ARIHANT' to 56161

**MAHARERA NO: P52000014107** Available on website : <https://maharera.mahaonline.gov.in>

Disclaimer: All specifications, drawings, amenities, facilities, parameters, etc., shown in this brochure are subject to change as per the approval from the respective authorities. The final discretion remains with the developers.

thoughtprints



**EXPERIENCE  
A FRESHER WAY  
OF LIFE  
SPREAD ACROSS  
16 ACRES**



**BREATHE PURE**



**EAT ORGANIC**

**LIVE HEALTHY**



Welcome to your Organic World at



**ARIHANT  
ASPIRE**

THE ORGANIC WORLD TO LIVE IN

PALASPE - PANVEL  
"THE CENTRE OF NEXT NAVI MUMBAI"

MAHARERA REGD. NO.: P52000014107



# WELCOME TO A 16 ACRE ORGANIC WORLD

LAVISH STUDIO & 2 BHK APARTMENTS

MAHARERA REGD. NO.: P52000014107



Artist's Impression

# SCIENTIFICALLY PROVEN ADVANTAGES OF ORGANIC LIVING, ADDING MORE YEARS TO YOUR LIFE



ORGANIC FOOD & PRODUCTS  
CORRECTS THE VITAMIN  
DEFICIENCIES



ORGANIC FOOD PRODUCTS  
ARE MORE FRESH AND  
ORIGINAL IN TASTE



ORGANIC FOOD BOOSTS  
HEALTH & IMMUNITY



THE NUTRITIONAL VALUE OF  
ORGANIC FOOD IS SUPERIOR  
THAN OTHERS



# EXPERIENCE THE LANDMARK OF ORGANIC LIFESTYLE

Set Amidst A Well-Connected  
Location of Panvel



## PALASPE, PANVEL THE CENTRE OF NEXT NAVI MUMBAI

A futuristic address that ensures excellent connectivity by Air, Rail & Road, Panvel is moving to be the India's top real estate destinations with Government of Maharashtra's major infrastructure investment of 50,000 crores alone in Panvel & Raigad District. It is a peaceful city in Raigad district of Maharashtra. Situated on the banks of Panvel Creek & surrounded with mesmerizing mountains, it ushers a pleasant climate. Poised to become the future megacity after Mumbai and Navi Mumbai, it's a thoughtfully planned residential locality with mix-culture population and excellent civic amenities.

Palaspe in Panvel is a Junction of all National Highways, a Multi-model Corridor, Mumbai-Pune Expressway, Railway Station and is a part of Smart City Project by CIDCO LTD. It offers supreme conveniences by connecting Airport, JNPT, Pune & Goa Roads & Heart of NAINA (Navi Mumbai Airport Influence Notified Area), the new city which envelopes numerous Tourist, Sports & Hill Stations.

### THE CENTRE OF NEXT NAVI MUMBAI

In a radius of less than 5 kms

- ✈ Upcoming Navi Mumbai International Airport
- 🚌 Panvel Bus Terminus
- 🚆 Panvel Railway Station
- 🎓 DPS School
- 🏠 Panvel City
- 📍 Prominent Landmarks like Banks, Restaurants, Schools, Colleges, Malls, Hospitals & Recreation areas
- 🏨 Palaspe Phata



Artist's Impression

**LIVE LONGER.  
STAY HEALTHIER.  
BE HAPPIER.**

ASPIRE AN ORGANIC WORLD TO LIVE IN

**ARIHANT  
ASPIRE**

— PALASPE - PANVEL —  
"THE CENTRE OF NEXT NAVI MUMBAI"



- 16 Acre Gated Community Development
- 8 Magnificent Towers of 42 Storeys each
- 2 Acres of Designer Landscaped Garden
- G+3 Exclusive Clubhouse with Grand Lobby and 2 Glass Lifts
- 6 Level Car Parking Spaces
- Fire Escape Chute
- Advanced Security with 24x7 CCTV Surveillance

# A WONDERFUL WORLD OF ORGANIC EXPERIENCES



Made Available Right Beside Your Home



**The Organic Garden**  
- ORGANIA



**The Organic Beauty Store**  
- NATURE'S NEST



**The Ozone Pool & Jacuzzi**  
- OZONA



**The Organic Spa, Steam & Sauna**  
- OXY BLISS



**The Organic Food Shoppe**  
- NUTRI MART



**The Salad & Juice Bar**  
- SUPRA ORGANIC





**HARVEST THE MOMENTS  
OF HEALTH, EVERY DAY**



**ORGANIA**  
The Organic Garden



**LIFE IS BETTER  
BY THE POOLSIDE**

Best if it's Ozone Enriched



**OZONA**  
The Ozone Pool & Jacuzzi



## LOVE & CARE FROM THE MOTHER EARTH

Now Comes Packed in its Purest Form



**NUTRI MART**  
Organic Retail Store

## THE BEAUTY SECRET OF NATURE



**NATURE'S NEST**  
The Organic Beauty Store



## A BLISS OF REJUVENATION THERAPY A DAY

Keeps the Stress & Worries Away



### OXY BLISS

The Organic Spa, Steam & Sauna

## AN ORGANIC PIECE OF HEALTH & ART

Crafted by Fresh Organic Veggies & Fruits



### SUPRA ORGANIC

The Salad & Juice Bar



**NUTRI MART**  
The Organic Food Shoppe Giving a Wide Range off Packed Organic Daily Food Products

**SUPRA ORGANIC**  
The Salad & Juice Bar Offering Fresh Organic Salads & Juices for All



Artist's Impression



# EXTRAVAGANT CLUB LIFE IN YOUR ORGANIC WORLD

---

## De Palo - The Club

G+3 Clubhouse with Health, Entertainment  
Avenues & Rooftop Recreation

Artist's Impression



## Mini Theatre

.....

CUT YOUR BORING ROUTINES

Say Action to Life

## Temple

REACH OUT TO THE DIVINE

Imbibe the Feeling of Peace

.....

## Spa

TOUCH THE PURITY IN YOU

Stay Your Best





Artist's Impression

## Grand Clubhouse Lobby with Luxury Lounge

CELEBRATIONS START WITH A  
GRAND WELCOME

Experience it Here



## Banquet Hall for Family Celebrations

CHERISH THE BEST OF LOVE,  
LAUGHTER & JOY

Together with your Family & Friends



Artist's Impression

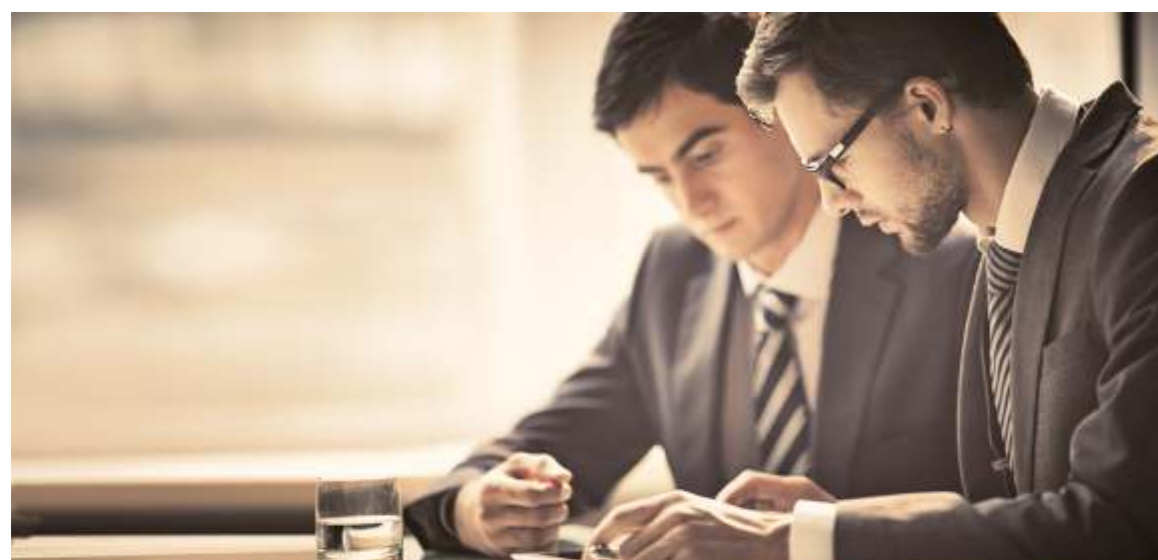
## Gymnasium with Modern Equipment

TRAIN YOUR BODY,  
STRENGTHEN YOUR MUSCLES,

Come Home to a New Health Destination



Artist's Impression



## Other Exclusive Clubhouse Amenities

Covered Badminton Court  
Business Centre  
Cafeteria  
Yoga & Meditation Room

PLAY, ENJOY, LAUGH, READ,  
WORK AND MEDITATE

Discover your World where  
Feelings Come Alive





# AN EXCLUSIVE WORLD OF RECREATION & WELLNESS

Spread Across 2 Acres of Thoughtfully  
Planned Landscaped Garden  
by Site Concepts, Singapore

Artist's Impression



Artist's Impression

## Open-air Amphitheatre for Acts & Performances

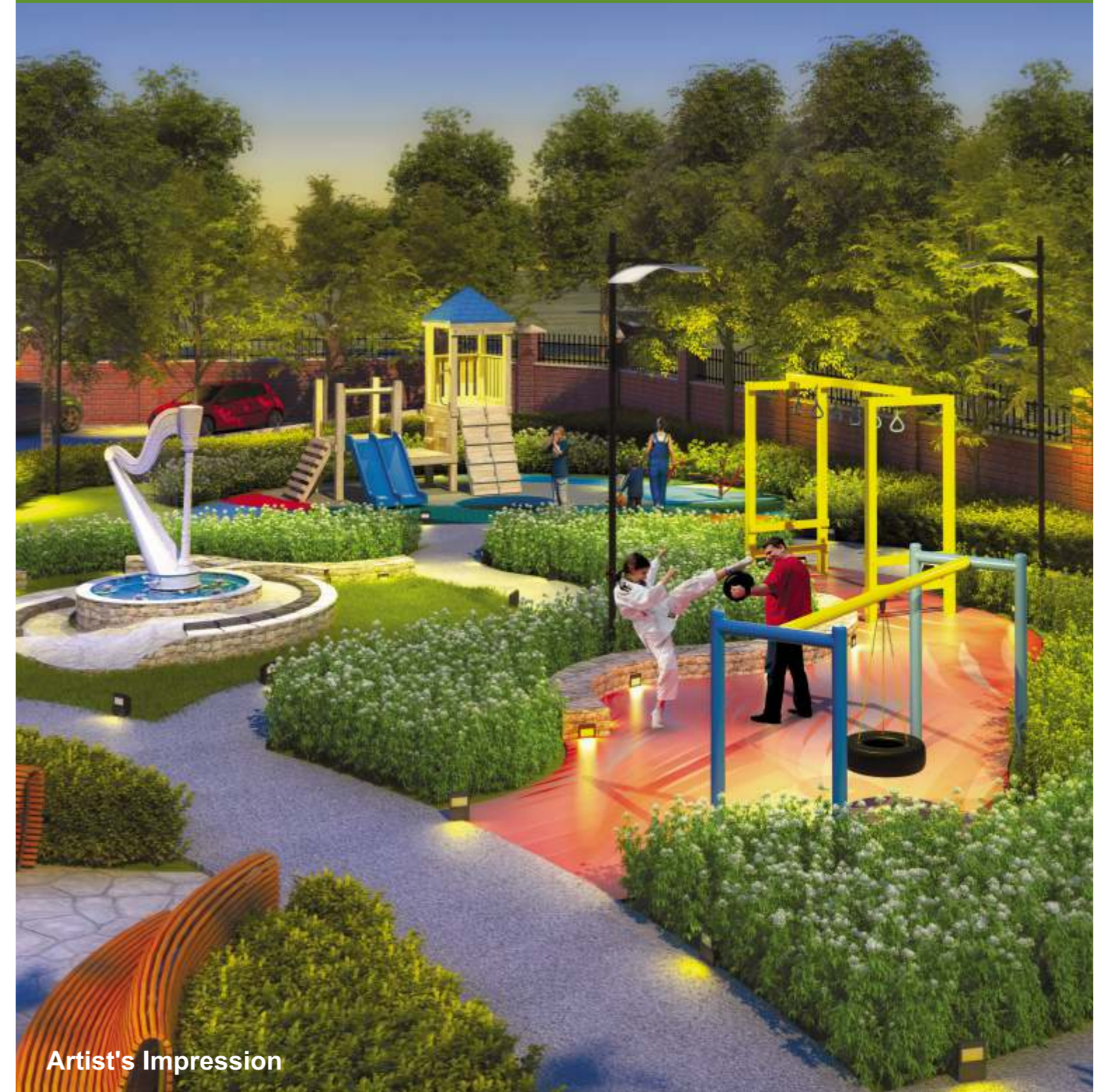
.....  
A BIG PLATFORM TO  
SHOWCASE YOUR TALENT

Shine with Pride & Fame

## Kid's Play Area with Play Equipment

.....  
CHILDHOOD HERE IS  
INCREDIBLY DELIGHTFUL

Come and Find it Playing & Growing

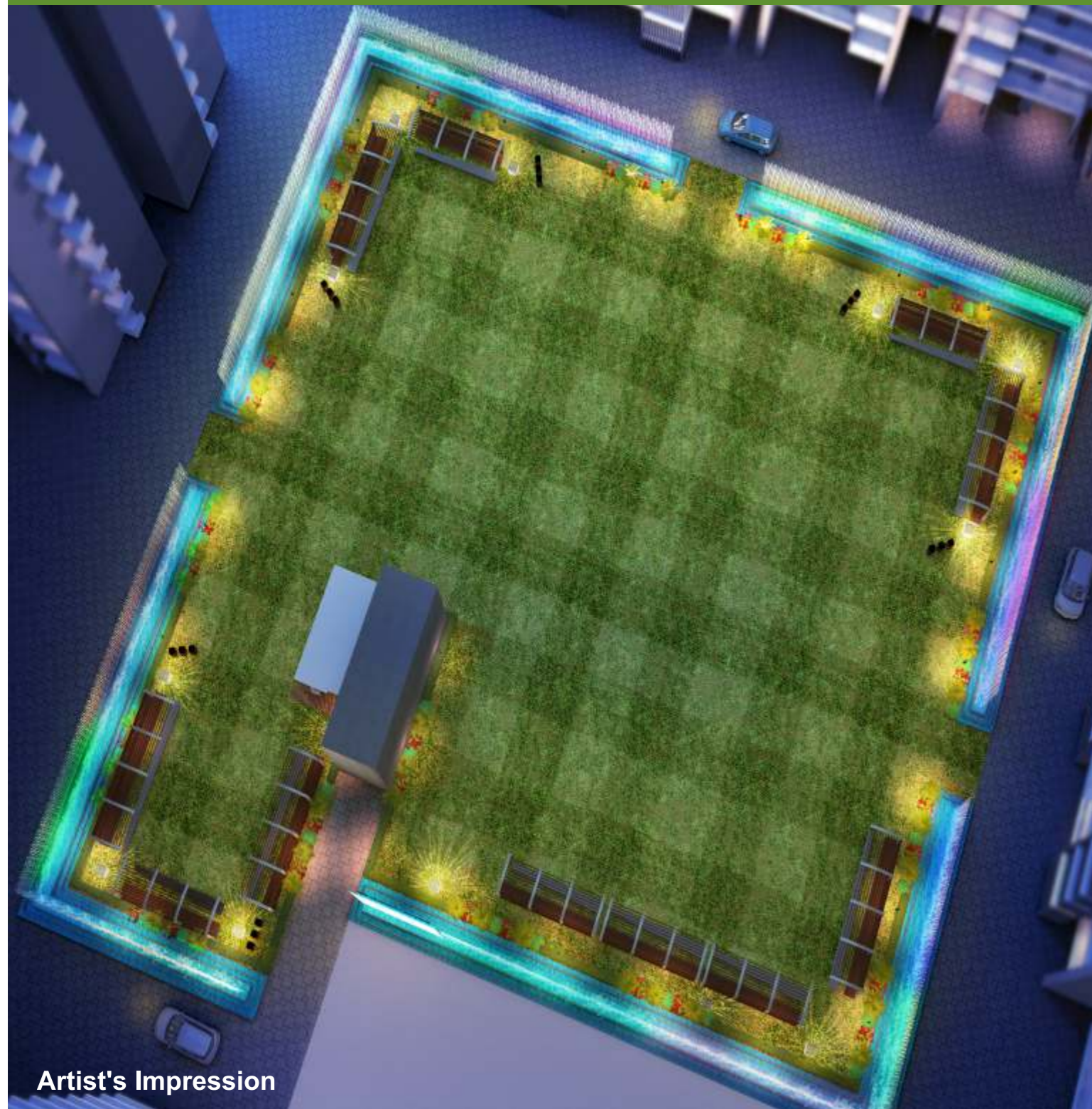


Artist's Impression

An Exclusive Space for  
Many Occasions & Reasons

EXPANSIVE  
GREEN COURTYARDS

Multipurpose Open Lawn & Socialising Spaces



Artist's Impression



Artist's Impression

Innovative Wi-Fi Pods Besides  
Water Fountains

STAY CONNECTED WITH  
WORK & PLEASURE

Advanced Green Destination



Artist's Impression

## A Maze Garden for Kids with Tree Canopies

.....  
A GREEN PUZZLE THAT  
LETS YOU STAY AMAZED

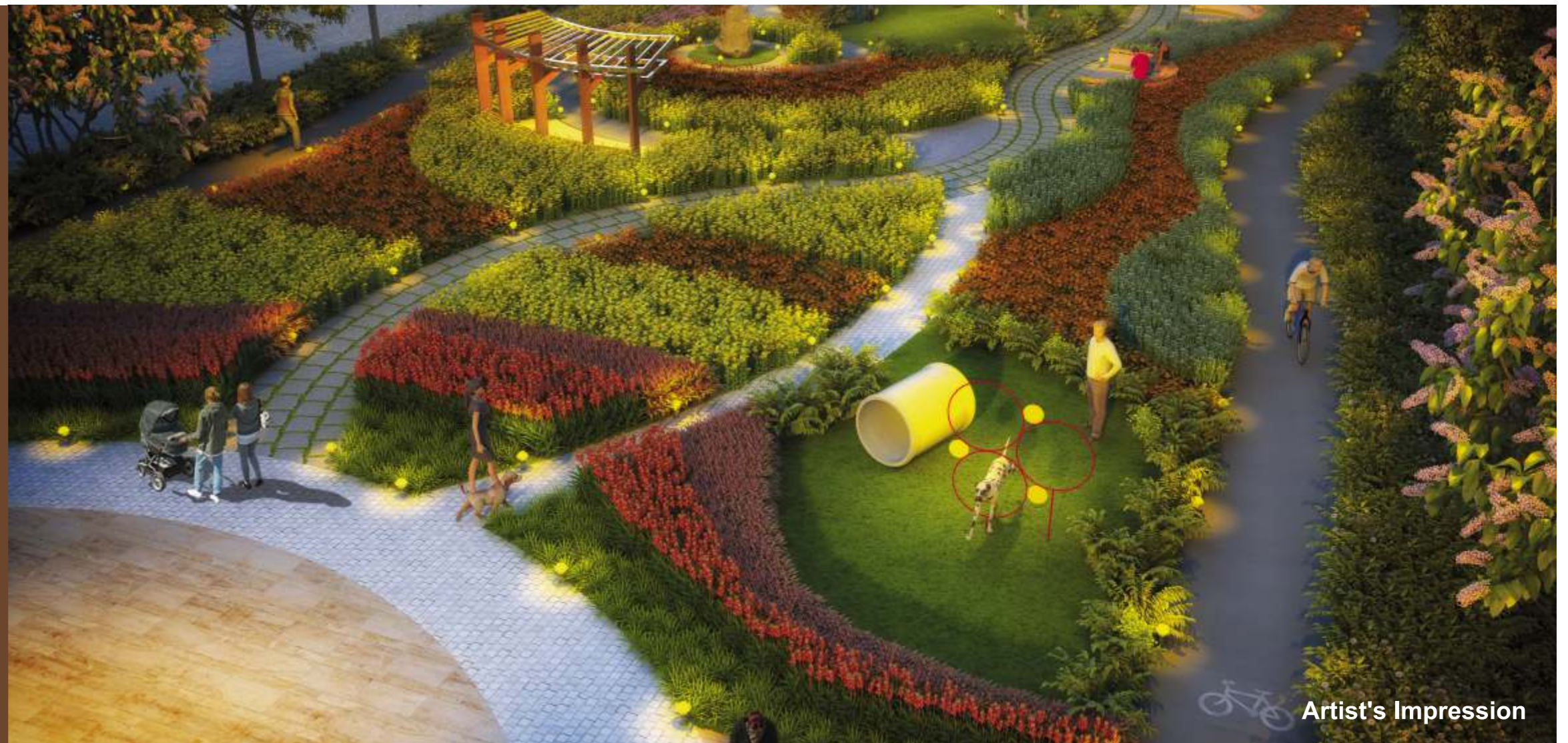
Find Your Way to Unlimited Surprises



## Pet Garden, Jogging & Cycling Track

.....  
FOR THE JOGGERS,  
THE CYCLERS & THE PET LOVERS

Here's A Place for One & All



Artist's Impression



Artist's Impression

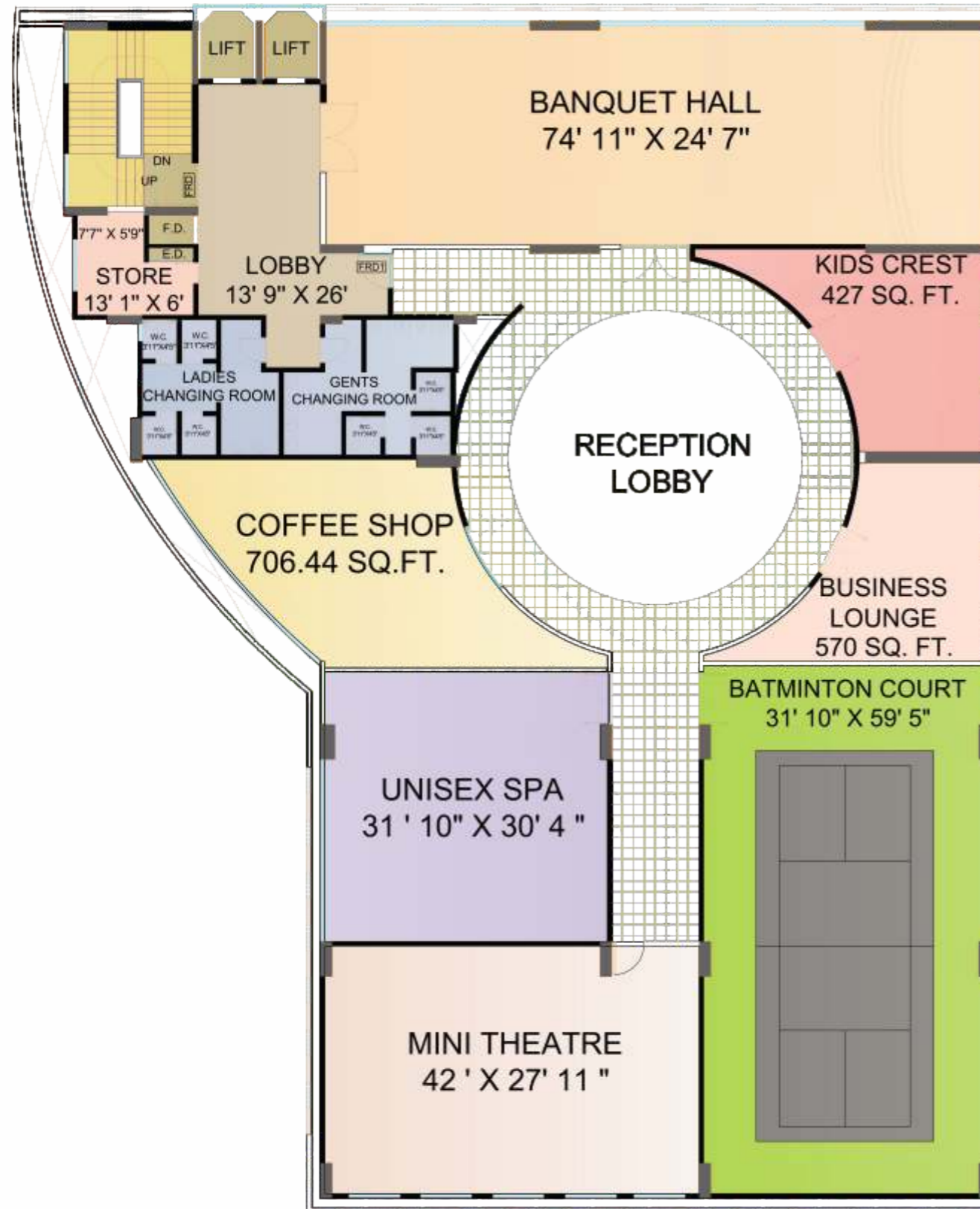
# THOUGHTFULLY DESIGNED SPACES

Where Lavishness Meets the Class

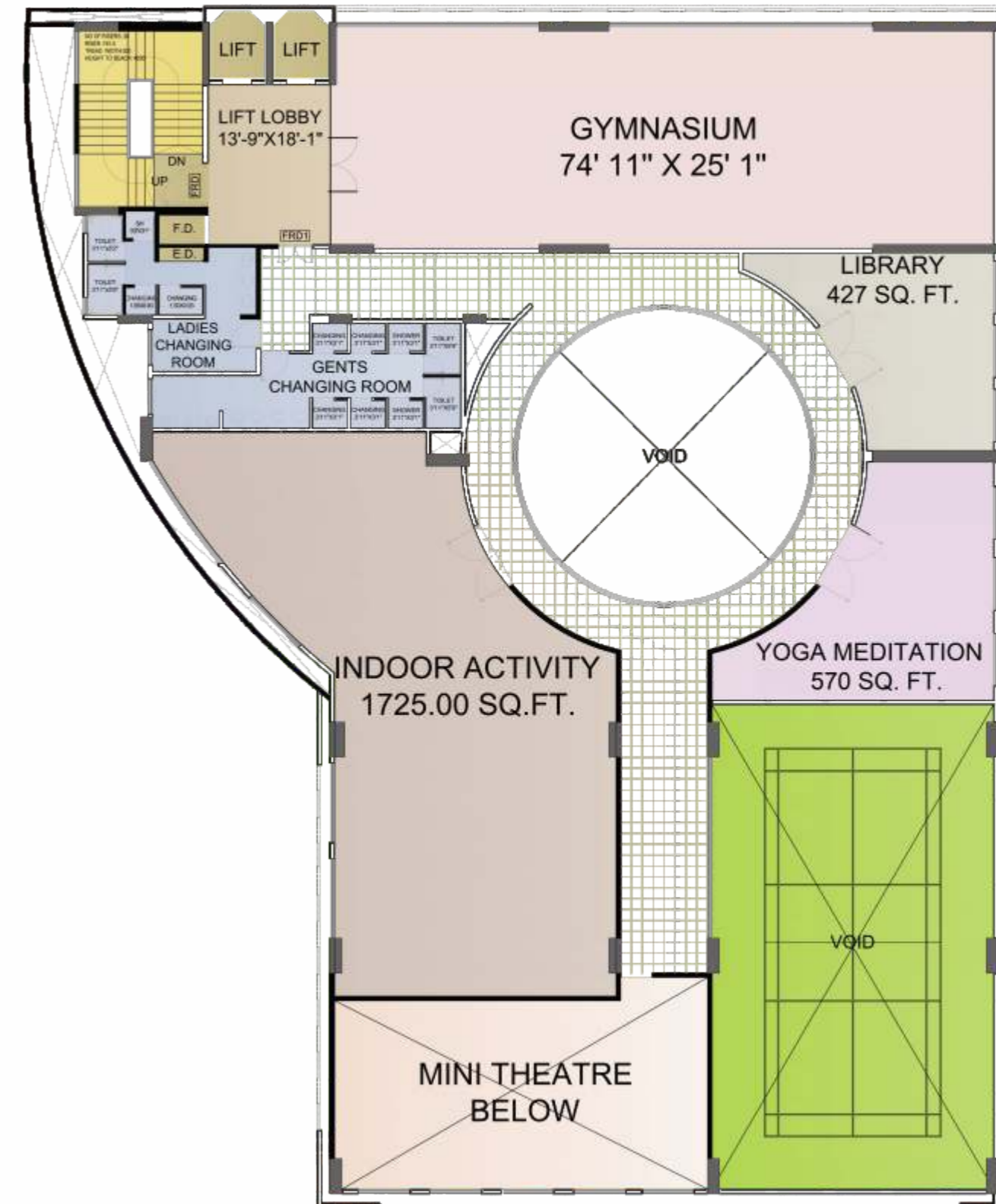
## Lavish Apartment Features & Embellishments

- Lavish Studio & 2 BHK Apartments
- Elegant Living Room with Vitrified Flooring
- Master Bedroom with bathtub
- Bathroom with Standard Sanitary Ware & Bathtub
- Video Door Phone in Every Apartment
- Moulded Panel Main Door & Bedroom Doors
- Granite Top Kitchen Platform with Full-height Tiles upto Beam Level
- Dedicated Space for Wash Basin & Washing Machine
- Luster or Velvet Touch Paint with POP in All Rooms
- Concealed Wiring with Ample Electrical Points & Modular Switches
- FRP Doors for Bathroom
- UPVC Windows

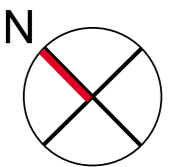
## CLUBHOUSE - 1<sup>ST</sup> FLOOR PLAN



## CLUBHOUSE - 2<sup>ND</sup> FLOOR PLAN



# LAYOUT PLAN







# LAVISH STUDIO APARTMENT



# 2 BHK APARTMENT



## ARIHANT SUPERSTRUCTURES LTD., THE BEST BRAND IN REAL ESTATE

### OUR ACCOLADES AND AWARDS



BEST CORPORATE BRAND INDIA LEVEL  
BY ECONOMIC TIMES, 2016



TOP HOT 50 BRANDS  
OF MUMBAI, 2014 & 2015



REAL ESTATE BRAND OF THE ICON  
OF THE YEAR (AFFORDABLE HOUSING)



ARIHANT ADITA - TOP 100 RESIDENTIAL  
PROJECTS OF INDIA BY CRISIL



BEST CORPORATE GOVERNANCE,  
2015

### "OUR BEST PRACTICE"

NO TRANSFER CHARGES, NO LOCK-IN PERIOD, NO ESCALATION

## OUR OTHER PROJECTS

### ARIHANT AAROHI

Kalyan - Shil Road - 245 Flats

MAHARERA REGISTRATION NO.: P51700004679

### ARIHANT ANMOL

Badlapur (E) - 665 Flats

MAHARERA REGISTRATION NO.: P51700003112

### ARIHANT ARSHIYA

Khopoli - Nr. Khalapur Toll Naka - 1605 Flats

MAHARERA REGISTRATION NO.: P52000002342

### ARIHANT AMISHA

Taloja - Nr. Panvel - 456 Flats

MAHARERA REGISTRATION NO.: P52000008203

### ARIHANT ANSHULA

Nr. Taloja Phase II, Navi Mumbai - 504 Flats

MAHARERA REGISTRATION NO.: P52000009246

### ARIHANT ANAIKA

Nr. Taloja Phase II, Navi Mumbai - 348 Flats

MAHARERA REGISTRATION NO.: P52000001869

### ARIHANT AALISHAN

Kharghar Annex - 955 Flats

MAHARERA REGISTRATION NO.: P52000006391

### ARIHANT ALOKI

Karjat (E), Nr Railway Station - 408 Flats

MAHARERA REGISTRATION NO.: P52000004014