

# ISHWAR GRACIA

Seawood, Navi Mumbai



**Ishwar Group**  
Builders & Developers

Don't Get Framed By The Competition, Trust Our Solid Reputation.





**Ishwar Group** today is changing the skylines of Navi Mumbai with its innovative and cotemporary edifices since 1999. Backed by a team of professional and promoters with a vast experience in the construction filed.

In the relatively short span of time, group has earned a good reputation amongst the well known builders and developers of Navi Mumbai and Group has completed many Residential Project in Navi Mumbai at Nerul, Seawood, Kharghar and Ulwe with its vast experience of Real Estate within time limit. Company have a team of Engineers and Construction Professionals, who are continuously innovating and developing milestones of excellence and taking Ishwar Gracia to Success Point.



## Seawood

An extremely well planned invention of the CIDCO, Seawood is a primary node of Navi Mumbai. The site of Seawood adjoins the Grand Seawood Station / Shopping Mall / Commercial Offices, CBD Belapur a commercial hub and bound by Palm Beach Road two major Highway. The prime location of Seawood is an opportunity of a lifetime that ake Seawood and ideal location for HOME SEEKERS.



### Our Prestigious Projects

Ishwar Ectasy (Nerul) / Ishwar Legacy (Nerul) / ishwar Bliss (Nerul) / Ishwar Iris (Seawood)  
Ishwar (Kharghar) / Ishwar Aura and Ishwar Acacia ( Ulwe)

#### Infrastructure

No water scarcity in Seawood and water supply is usually for 24 hours . Residents here get 24 hours uninterrupted power supply . Development of the world-class Grand Seawood Station ( SEAWOODs GRNAD CENTRAL) and International Airport has already begun.

#### Recreation

A attractive famous Wonders park is set up for children in Nerul for leisure is being developed on . State of the art multiplex movie. D.Y. Patil Stadium, Nerul Gymkhana etc.

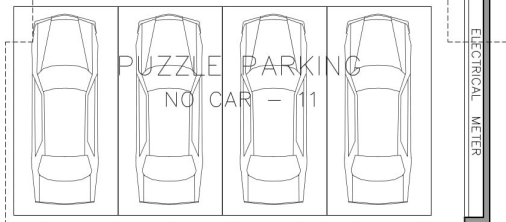
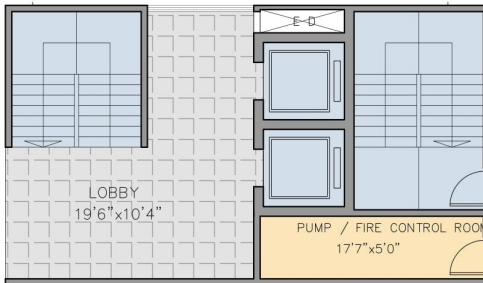
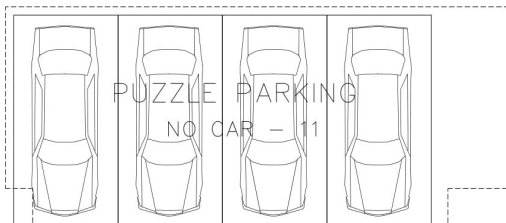
#### Educational Institues

D.Y. Patil Medical College, Trena Medial College, Tilak College, Delhi Public School, Don Bosco, DAV, Ryan International, Podar International & St Xavier Schools etc. are within the node

R G 15% = 145.00 SQ.MT.

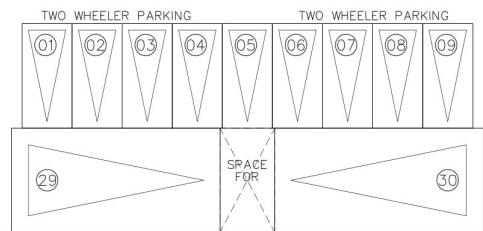


DRIVE WAY  
± 000 MM LVL.



DRIVE WAY  
± 000 MM LVL.

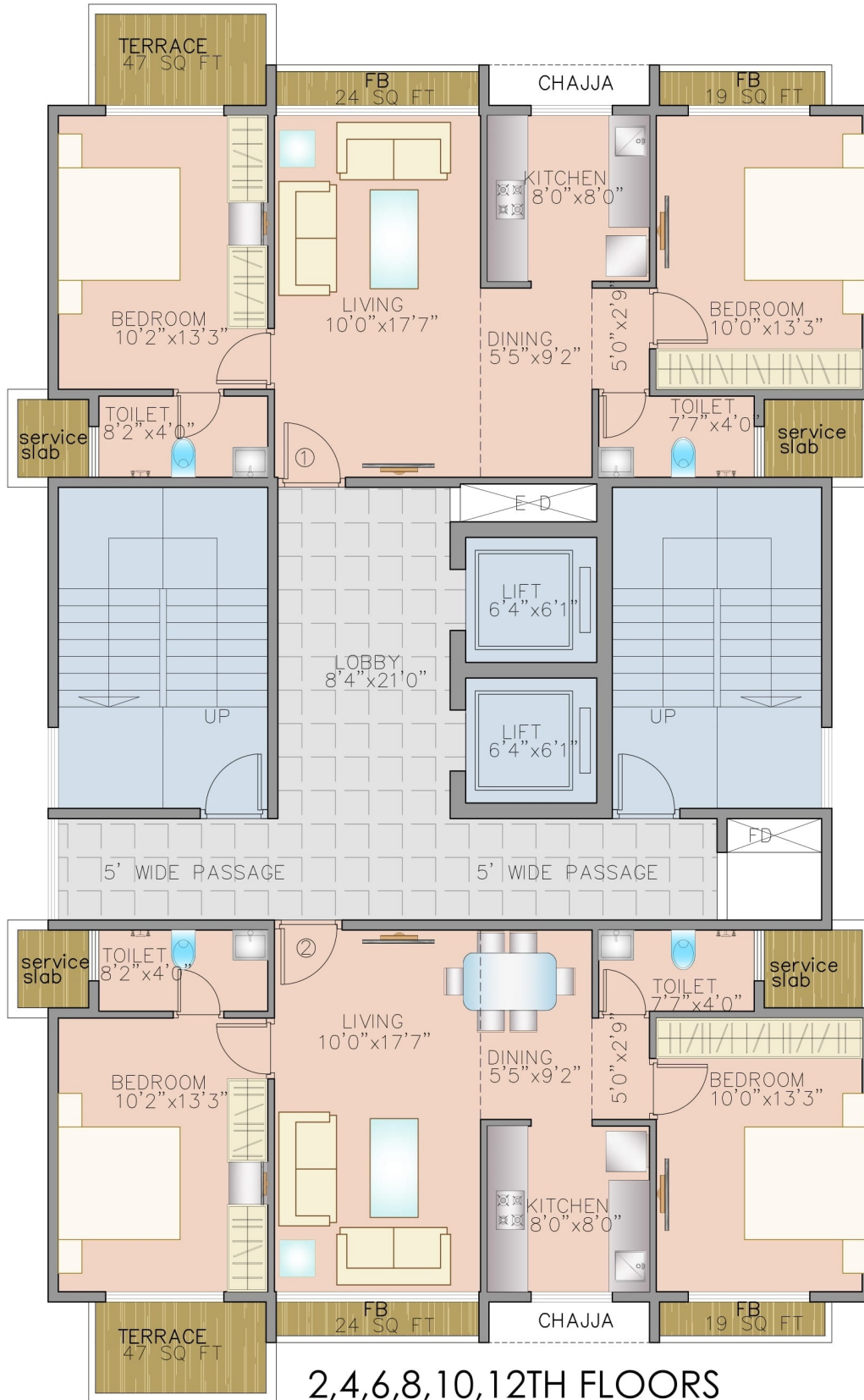
### GROUND FLOOR



6.00 MTS. WIDE ENTRY

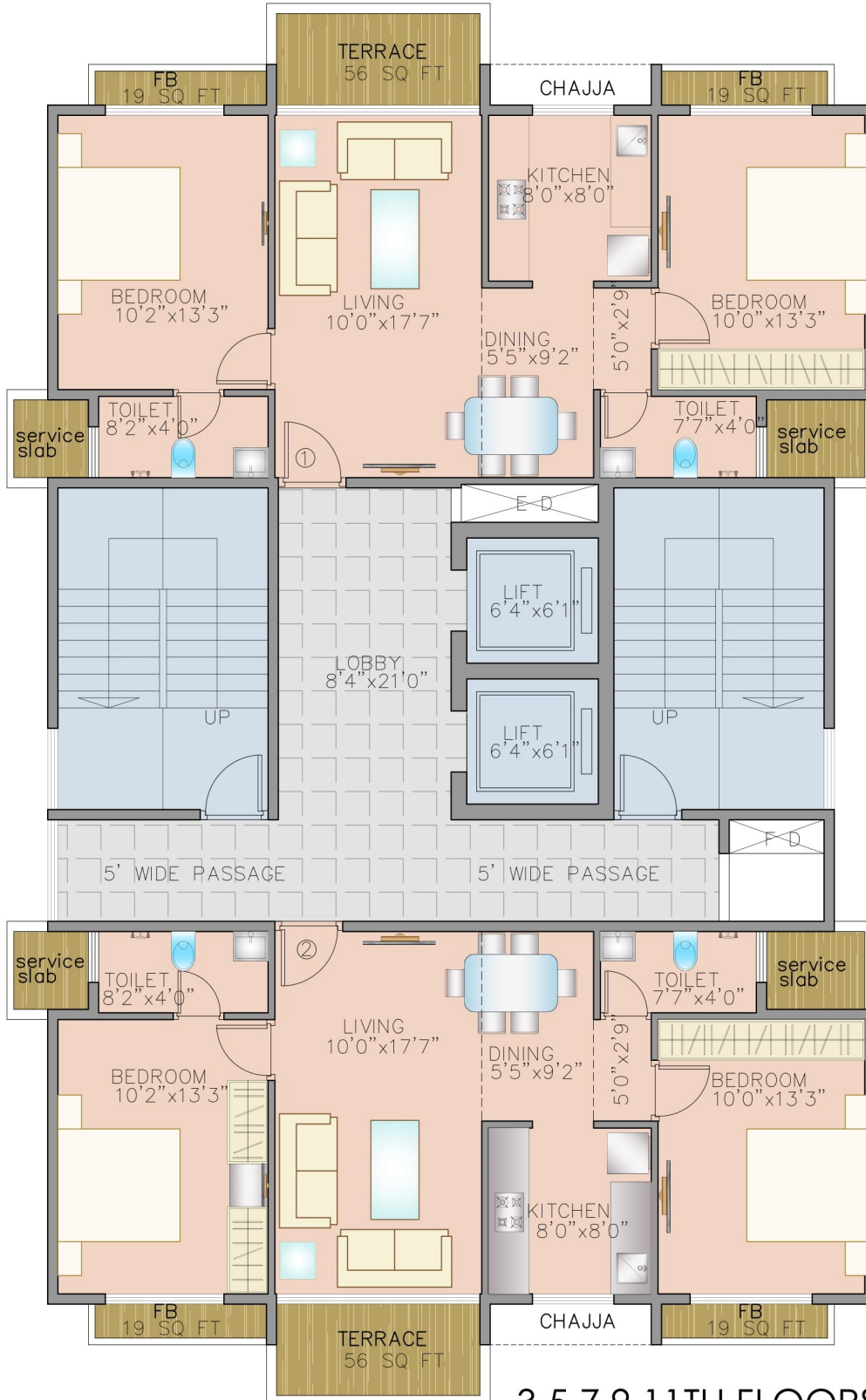
6.00 MTS. WIDE ENTRY

<<11.00 M WIDE ROAD>>



2,4,6,8,10,12TH FLOORS

**<<11.00 M WIDE ROAD>>**



3,5,7,9,11TH FLOORS

<<11.00 M W I D E R O A D>>

## Projects Features

Each Flat at "Ishwar Gracia" is a righteous extension of the layout which is spacious, neatly planned and tastefully appointed with carefully handpicked amenities.



### Building Features

- ✧ G+14 Stories Residential Tower
- ✧ Earthquake Resistant RCC Structure with attractive elevation
- ✧ Generator backup for elevators and common area
- ✧ Advance Fire Fighting System
- ✧ External paint with pure acrylic paint
- ✧ Two High speed Big Branded elevators

### Gracia Features

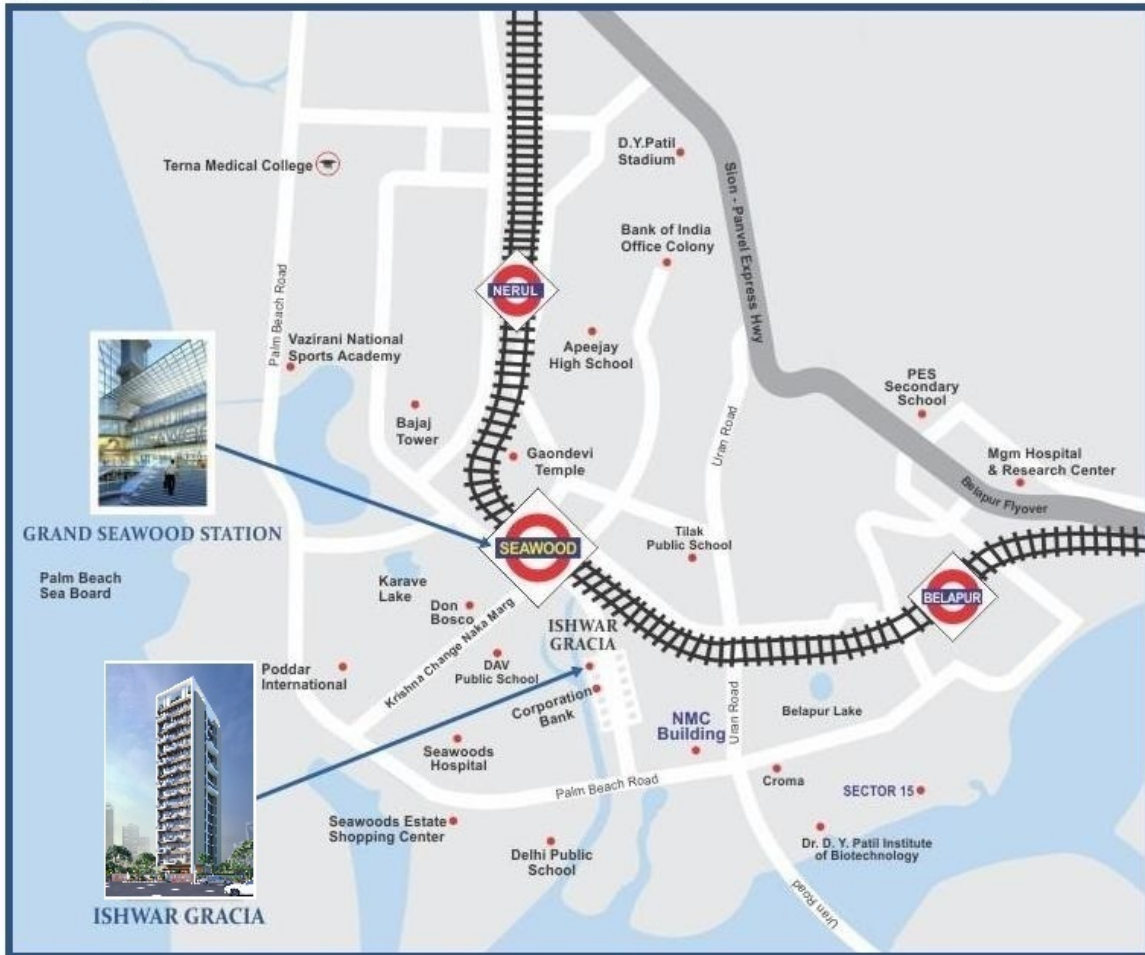
- ✧ Grand Entrance Lobby Double Height
- ✧ Puzzle Parking (Ample car Parking Space for every member)

### Apartments

- ✧ Vitrified Flooring for Living & Bedrooms
- ✧ Anodized Coated Windows with tinted glass
- ✧ Connected wiring with ample electrical points and Branded Modular Switches
- ✧ Bedrooms / Kitchen with door height, premium quality tiles
- ✧ Branded Sanitary fittings



## Location Map



Architect  
SOYUZ TALIB

RERA NO.: P51700017159

  
**Ishwar Group**<sup>®</sup>  
Builders & Developers  
Kore Enterprises Venture

Site Address: Plot No. 88, Sector 50 (New), Nerul, Seawood(W), Navi Mumbai 400706

E-mail: [sales.ishwargroup@gmail.com](mailto:sales.ishwargroup@gmail.com)

Note: the information Contained in this brochure is indicative of the development that is proposed. It is prepared in good faith and is for guidance only. It does not constitute part of any offer or contract. Subject to the approval of the authorities the Developers reserve the right to layout, plans, specification or features of the proposed development without prior notice or obligation.