

KRISHNA SAPPHIRE

Plot No. B-24/25, Sector-8, Ulwe, Navi Mumbai.

Your Dream Our Creation...



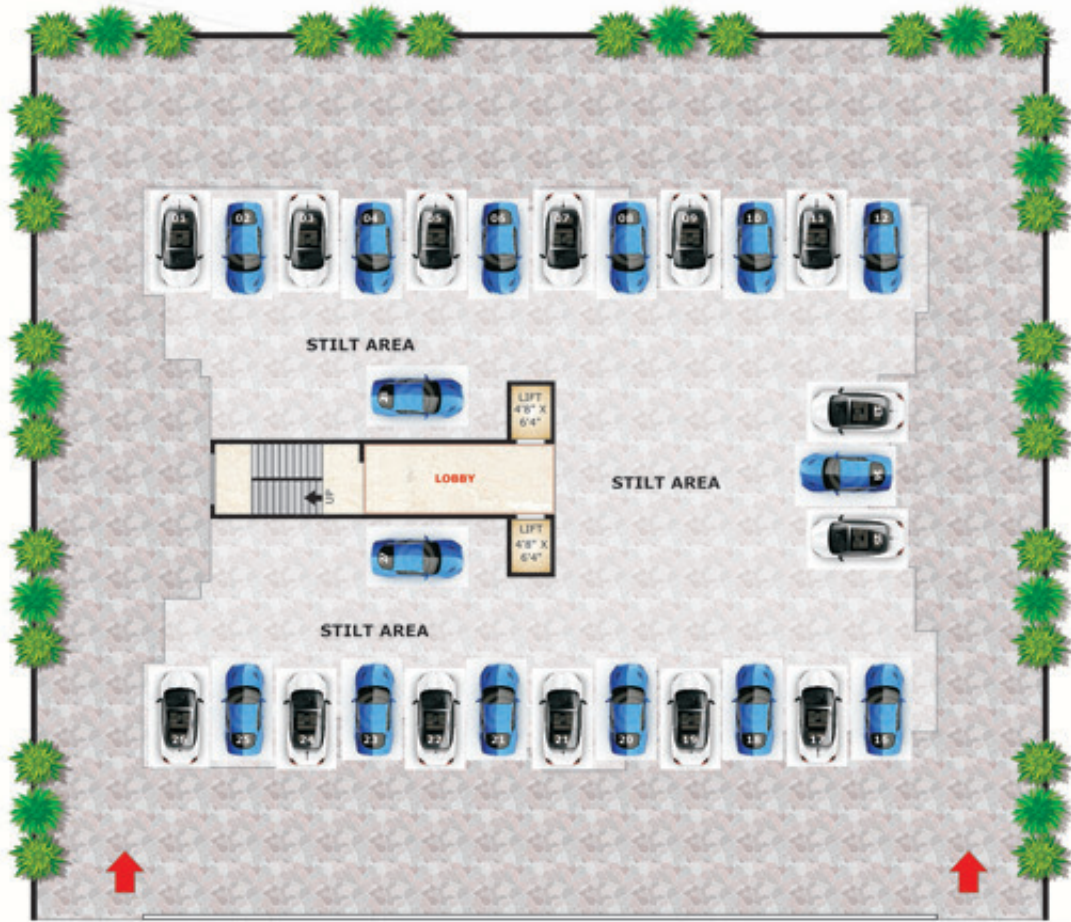
Project Features

- Clear Title CIDCO Transfer Plot.
- Project Approved By All Financial Institutions & Banks.
- G+7 Storied Fully Residential Building.
- Exclusive 2 BHK & 3 BHK Flats Available.
- Car Parking Space.
- Quality Construction With Earthquakes Resistance.
- R.C.C Frame Structure.
- Branded Lift Of Reputed Make.
- Timely Possession.

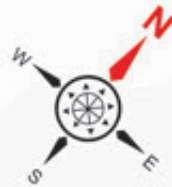


Amenities

- Decorative Entrance lobby.
- 2' x 2' Vitrified flooring in all rooms.
- Designer Tiles, Anti skid flooring in all Toilet & Terrace.
- Granite Kitchen platform with Stainless Steel Sink for cooking area.
- Designer tiles in Kitchen, Bathrooms & Toilets up to door heights.
- Marble Frames for Toilets with Water proof Doors.
- Anodized windows in all Rooms with Reflective Glass.
- Teakwood laminate Finished main door.
- Concealed Plumbing with reputed make fittings.
- Concealed copper wiring with reputed Brand modular switches.
- Fridge, water Purifier & Exhaust Fan point in kitchen.
- Geyser point in Bathroom.
- Cable & Telephone point in living & Bedroom.
- A/C point in Master Bathroom.
- Lift of reputed make.
- All walls with Birla or J.K. putty Finish ceiling with POP Cornices with Acrylic paint Finish.
- External Finish with good quality Acrylic paint (Apex).
- Attractive compound wall with decorative M.S. Entrance Gate.
- Intercom Facility in all flats.
- Watchman Cabin.
- Free movement passage for smooth flow of vehicle properly shown.
- Latest fire fighting system.
- Generator power back up.



GROUND FLOOR PLAN



FIRST FLOOR PLAN



11.00 M WIDE ROAD

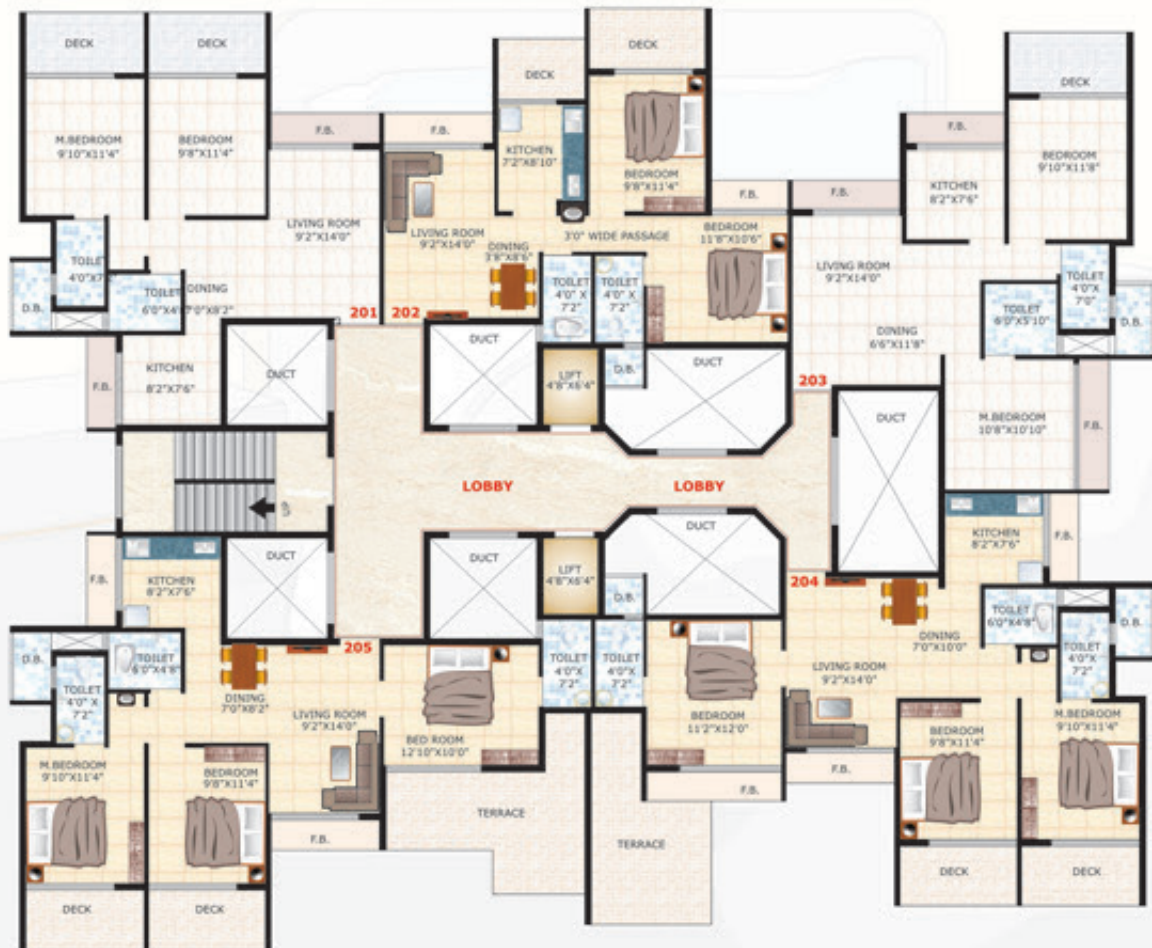


SECOND FLOOR PLAN



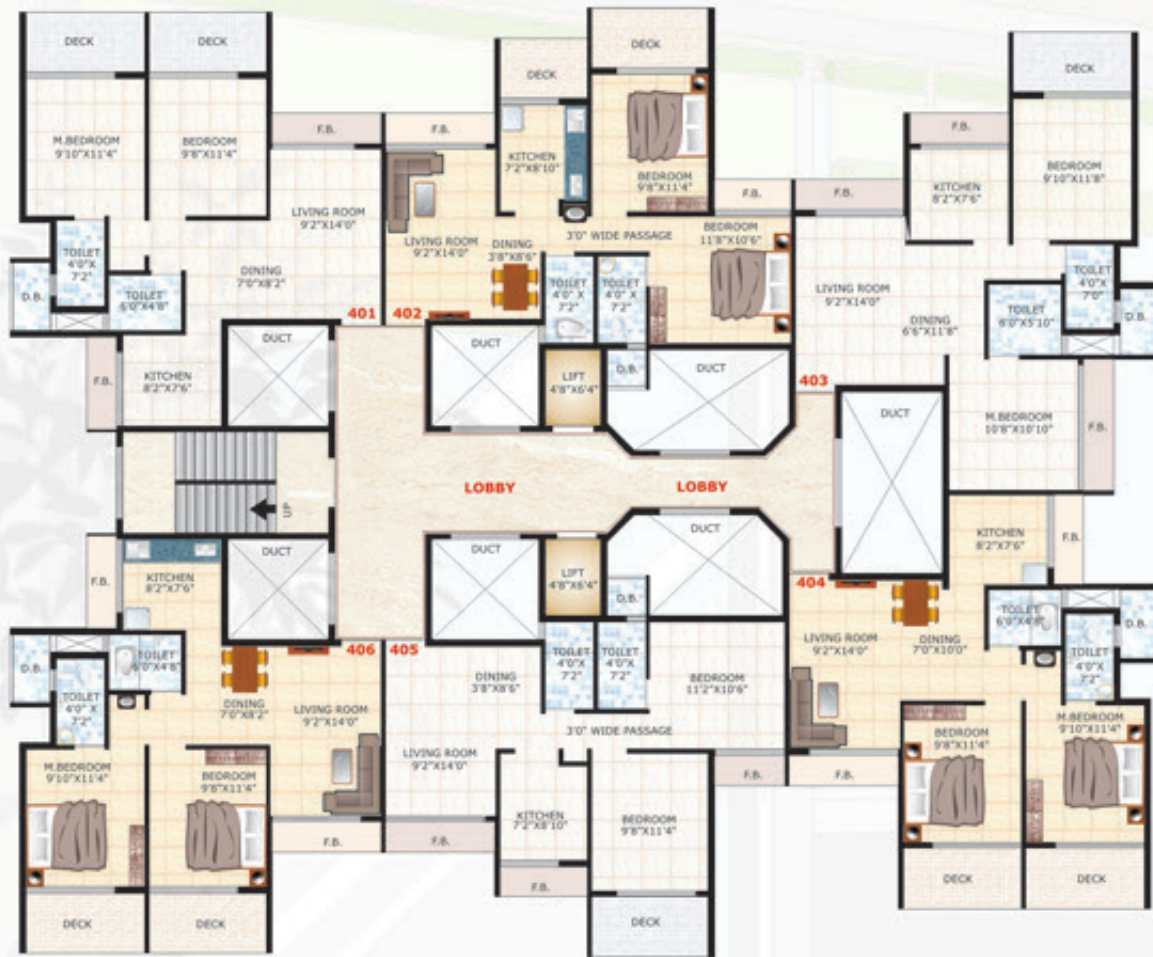
← 11.00 M WIDE ROAD →

THIRD FLOOR PLAN

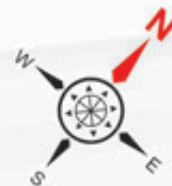


← 11.00 M WIDE ROAD →





← 11.00 M WIDE ROAD →
FOURTH FLOOR PLAN

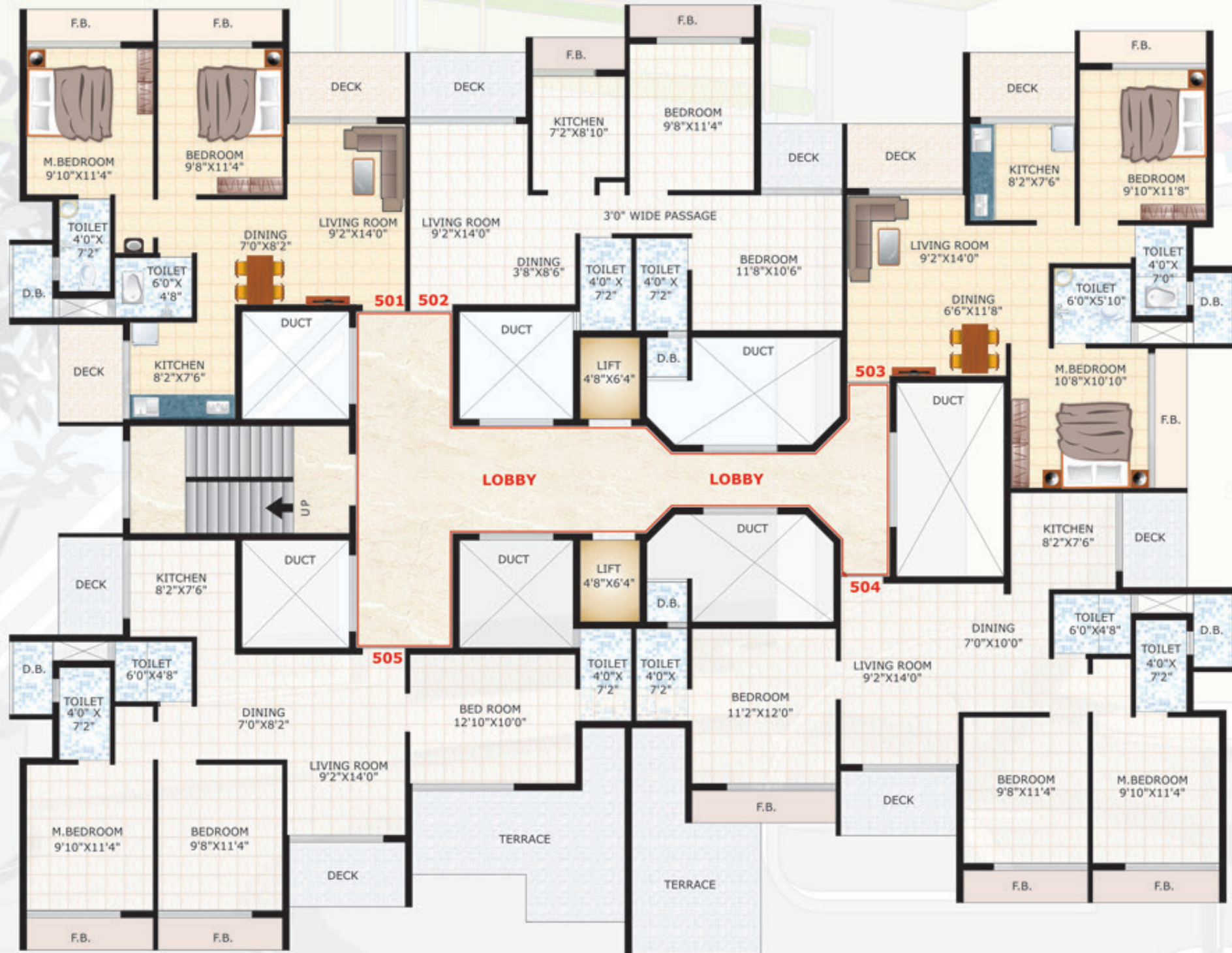


SIXTH FLOOR PLAN



← 11.00 M WIDE ROAD →

FIFTH FLOOR PLAN



← 11.00 M WIDE ROAD →

SEVENTH FLOOR PLAN



← 11.00 M WIDE ROAD →

Location Plan



Designed by: Panijjat Graphics, Kamathe, 9819504567 / 64572876

Project by

RADHE KRISHNA BUILDERS

Off. :- 460, Center Facility Building - I, APMC Market - I, Sector - 19, Vashi, Navi Mumbai

Booking Contact : 9819944210 / 9967575052 Email: radhekrishnabuilders@yahoo.in

Architects: Fascinate Architects | RCC Consultants: Shravani Consultants

All plans, amenities & other details shown hereby subject to change if necessary. The direction for any changes lies only with the developers.