



Your Home Your Empire.....

# King's Landing



DND BUILDHOME PVT. LTD.

Branch office: Hotel Corporate Inn, Lane No. 2, Raja Park, Jaipur-302004  
Tel.: +91 141 2620711 Mob.: +91 9351167899, 9828017799, 9414073324

Registered Office: D-651, Malvia Nagar, Jaipur

Architects: Vivacious Designs

VS Design Studio 7737962150

Disclaimer : Promoters reserve the right to change any design, Features and specification of the building without any prior notice and information. This brochure is for illustration purpose only and it cannot be in any way treated as a legal document. All information, specifications, plans, material and visual representations contained in the brochure, model & sample flat are subject to change from time to time by the promoters and / or the competent authorities and shall not form part of the offer or contract.



class is timeless...

## Creation

King's Landing, an exclusive project located at Tilak Nagar, Jaipur offers 3 BHK Super Luxurious Apartments. These apartments are designed especially for the few who are looking for something unique and contemporary for their family. It has all the elements to give you a grand lifestyle and quality at the same address.

## Lifestyle

...the grand way of living!

One aspires to live the way he dreams and at DND Build Home Pvt., Ltd. we strive to convert your dreams into reality. At our new creation, we have an elegant architecture that will please your eyes and spacious apartment that will take care of your comfort. The amenities are also specially designed to suit your Grand lifestyle.

## Classic

...only known to the connoisseur!

A home should confer pride on its owner as a throne brings to its king. We have designed our new project King's Landing to bring you pride, joy and gratification that you always aspired. We present you a magnificence which is an epitome of class, quality and luxury.



ITS NOT JUST ABOUT WHO YOU ARE  
BUT ALSO WHERE YOU ARE

Your Home Your Empire.....

# King's Landing

# Exclusive

...designed to pamper the  
epicure in you!

A man travels the world over in search of  
what he needs and returns home to find it.

- George Moore



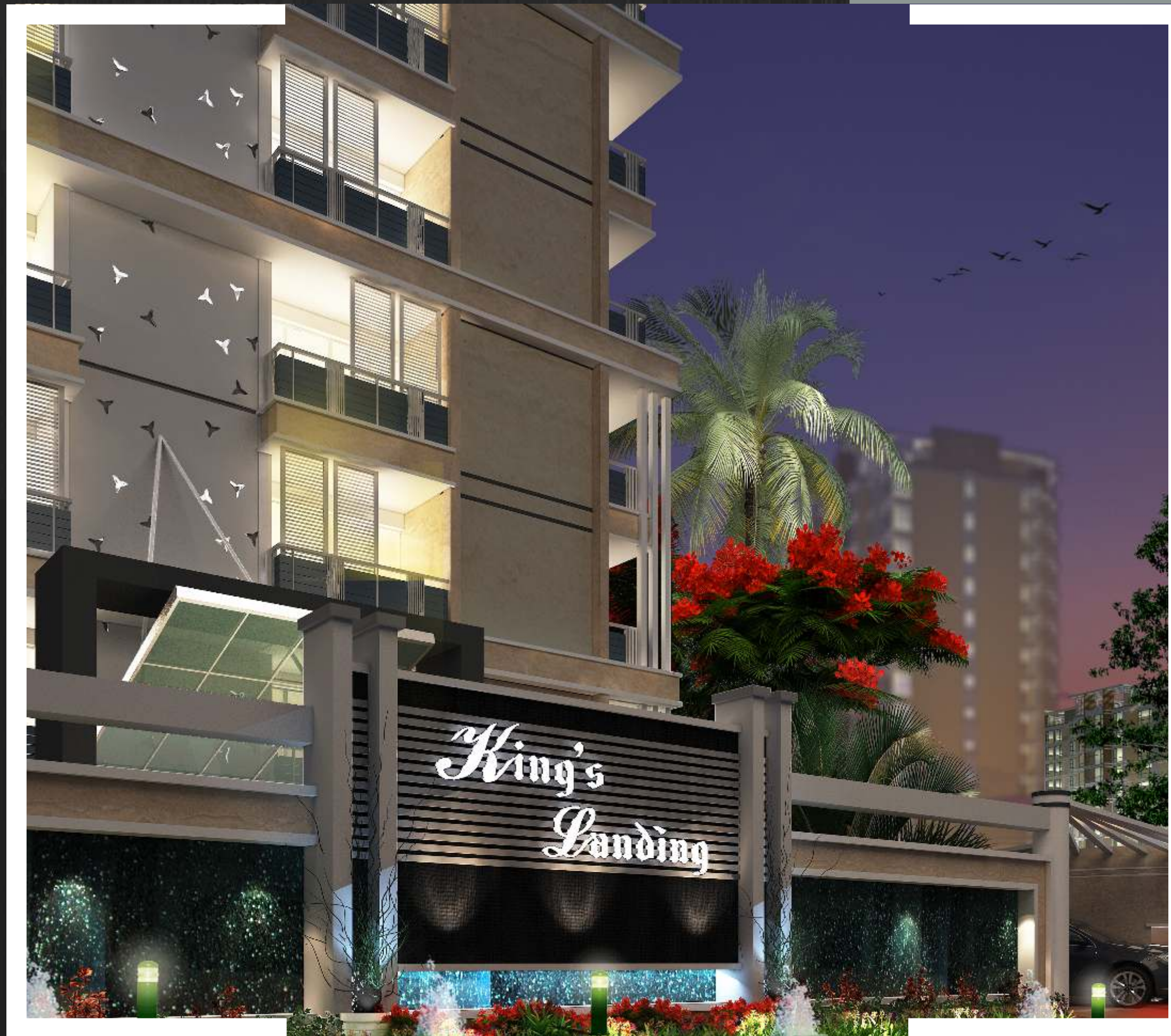
*A vision converting into reality*

At King's Landing, a tribute to extraordinary individuals and families. These majestic and opulent residences are truly one-of-a-kind and home to those who prefer quiet luxuries and beautiful living to the humdrum of daily existence. Splendid and magnificent in every living way, King's Landing sets the standard in luxuries and well defined lifestyle.

Your Home Your Empire.....

# King's Landing





# Leisure

...rejuvenate, relive and refresh yourself!



At King's Landing you will have numerous ways to rejuvenate yourself. Go for a refreshing outing on the green terraces or choose a quiet corner in the library with your favorite book. You can also workout at the fully equipped Gymnasium or tone up at the Aerobics Room. We encourage you to display your skills at the Community Hall and Pool table. If you are too tired for all the above, we have a Meditation Zone to soothen you down and help you freshen up for a beautiful evening ahead.

# Greet *i* Style

DON'T hope for perfection, get it!



Navigating through the dynamics of space and light , living room is good enough to show off with a touch of 'Class ,chic , classy , spacious and Inviting - synonymous with grandeur living style. The scene setting creating adialogue among the elements of the living room, thereby generating the warmth of love with all.

**Imported Flooring  
Decorative lights**

*Welcome to an elegant life*

# Dream *in* Style

Languish in comfort zone of your own identity!

Designed and specialized to make your body and mind relaxed. Giving you the wooden flooring with the attached toilet and a desirable dressing room. French door and windows to give a serene environment. Overlooking the greens with a atmosphere.

Wooden Flooring  
French windows



*The art of comfort*

# Cook *i* Style

Get that fulfilling experience!

Kitchen attributes with powerful appeal, excellent ergonomics and easy action. It offers maximum flexibility and design freedom. Cooking and dining both seamlessly blending style with functionality, offering you unmatched value. The art of designing creating a sensory experience of light, colour and movement.

**Modular Kitchen  
Utility balcony**

*Innovative Open Kitchen*

# Shower *i*n Style

In sync with style...



Get in and get charged after a long day work and give your senses the much needed "shower experience" with the high- class range of Bath assets you would be tempted to remain inside for long. So, be ready for getting admired!

Separate dry and wet area  
Wall hung WC  
Over the counter wash basin

*The Great Bath*



# Detail

...importance given to the minute entities!



Very magnificent structure or a monument is not only admired for its grandness but is also acclaimed for the minute details that the creator ensured. We at King's Landing have a keen eye for detail and firm belief in optimizing things at very fine levels. At King's Landing, every minuscule aspect has been inspected comprehensively so as to match your taste and style. Rest assured, your new home is going to be one of the finest masterpieces from the experienced creator DND BUILD HOME Pvt.Ltd.



# Neighbourhood

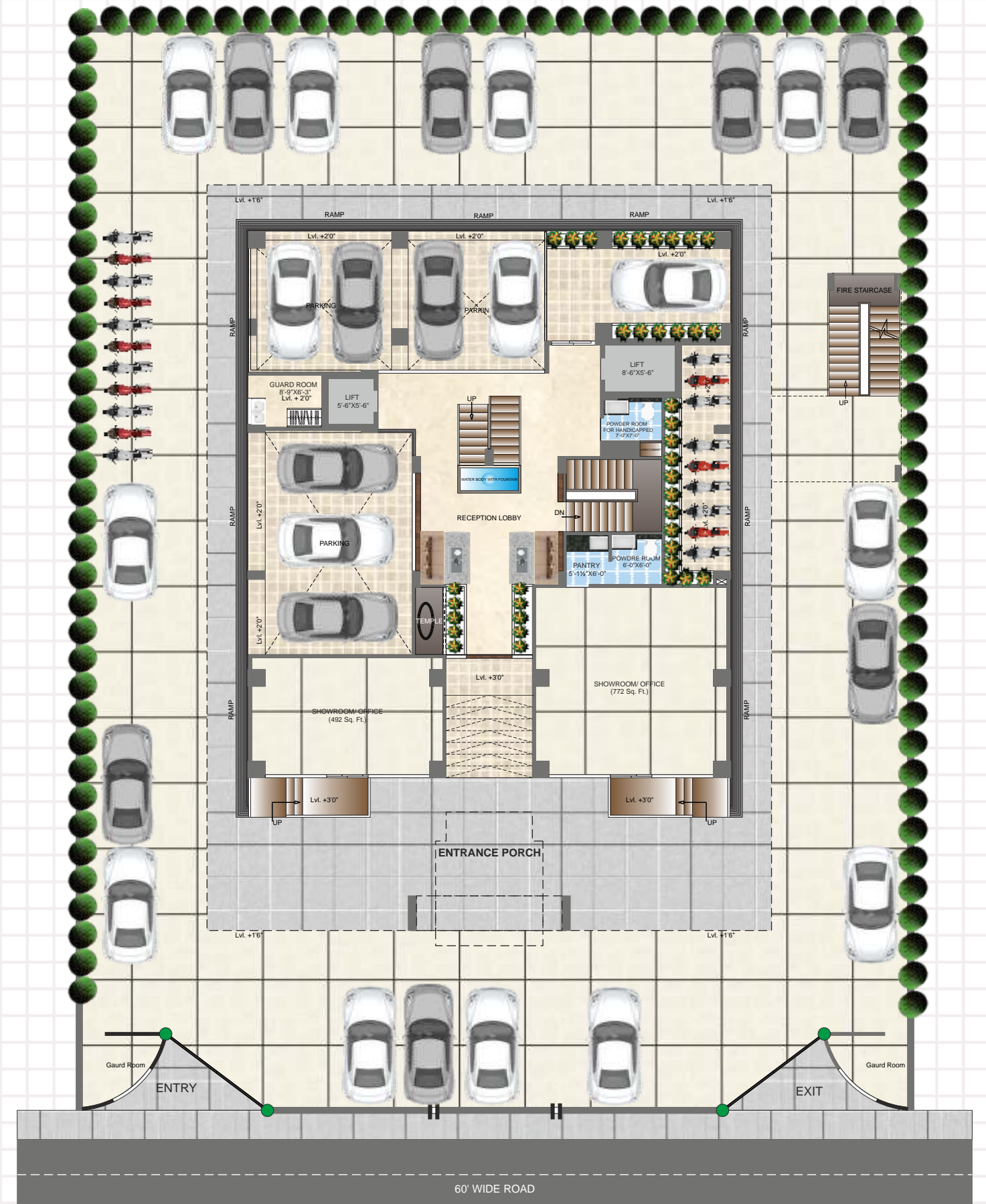
...reviving the spirit of community living!



# Impression

...In an oasis of elegance & luxury!

The Entrance Lobby...



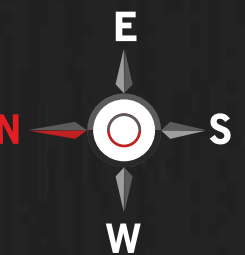
**STILT FLOOR PLAN**

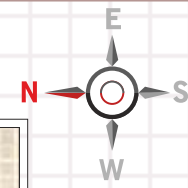
Your Home Your Empire.....

# King's Landing

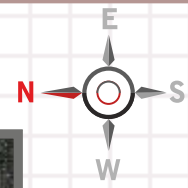
Saleable Area Chart

Showroom No.	1	2
Area Sq.ft.	492.00	772.00





**1st To 8th FLOOR**



**9th FLOOR PLAN**

**Saleable Area Chart**

Flat No.	101 to 801	102 to 802	103 to 803
Flat Type.	3 BHK	3 BHK	3 BHK
Flat Sq.ft.	2060.00	2060.00	2050.00

Your Home Your Empire.....

**King's**  
Landing



### Typical Type 1 & 2 Floor Plan

Salable Area : 2060 Sq. Ft.

01. Buffer Zone	4'-4½"X5'-0"	07. Bed Room	12'-6"X11'-9"	13. Dressing	7'-0"X5'-0"
02. Drawing Room	11'-8¼"X12'-1½"	08. Dressing	7'-3¾"X5'-0"	14. Bathroom	8'-0"X5'-0"
03. Living/ Dining	19'-2¼"X11'-6"	09. Bathroom	8'-0"X5'-0"	15. Bedroom	11'-0"X13'-0"
04. Balcony	5'-4½"X10'-4½"	10. Buffer Zone	3'-10½"X4'-4½"	16. Balcony	11'-0"X6'-10½"
05. Kitchen	8'-9¾"X13'-6"	11. Bedroom	11'-3"X13'-0"	17. Dressing	8'-0"X5'-0"
06. Utility Balcony	4'-0"X7'-9"	12. Balcony	5'-4½"X10'-4½"	18. Bathroom	8'-0"X5'-0"

Your Home Your Empire.....



### Type 3 Floor Plan

Salable Area : 2050 Sq.Ft.

01. Drawing Room	11'-6"X14'-0"	07. Balcony	12'-5½"X4'-6"	13. Dressing	7'-¾"X5'-0"
02. Balcony	11'-1½"X4'-6"	08. Dressing	5'-3¾"X5'-9"	14. Bathroom	8'-0"X5'-0"
03. Living/ Dining	11'-0"X18'-6"	09. Bathroom	8'-0"X5'-0"	15. Bedroom	14'-9½"X11'-0"
04. Kitchen	8'-4½"X14'-1½"	10. Buffer Zone	3'-7½"X4'-2"	16. Balcony	8'-7½"X4'-6"
05. Buffer Zone	5'-3½"X3'-7½"	11. Bedroom	15'-5½"X11'-9"	17. Dressing	8'-3"X4'-6"
06. Bedroom	12'-¾"X13'-7½"	12. Balcony	5'-4½"X5'-4½"	18. Bathroom	8'-0"X5'-0"

# Quality

...simply, passion at work!



We at DND Build Home Pvt. Ltd. believe in developing and constructing aesthetically designed and functionally efficient residential complexes of international quality, offering "more value for money". We believe our buildings should reflect engineering excellence with a view to provide complete customer satisfaction. It is our intention that the quality of our products & services should result in complete value for our esteemed clients. While rendering our construction services, we emphasize on Environmental, health & safety (EHS) standards as an integral part of our business practices.

**OUR** Vision - Transform the way people perceive 'Quality'  
Mission - No Short Cuts to Quality  
Philosophy - Passion at Work

Your Home Your Empire.....

# King's Landing

## truly unmatched **features**

### POWER BACKUP

100%power backup for common and essential service areas, with auto start and cut mode.

### WASTE DISPOSAL MANAGEMENT

Efficient waste disposal garbage chutes will be provided on each floor for disposal of kitchen and other waste disposal.

### RAIN WATER HARVESTING

Rain water harvesting system to recharge ground water will be a feature of the project all surface rain water of the complex will be collected and sent to the ground through a well designed system.

### APPROACH TO ALL FLATS

Branded quality elevators will be provided through well designed lobby-2 elevators,one six passanger and one strecher / goods elevator for patients in emergency.

### SECURITY AND SAFETY

24 hours live cctv recording at entry and exit gates,video-phone in each apartment connected to the security gate will be provided for entry permission at entry gate. effective fire fighting system as per the statutory norms of the govt. the rcc structure of the apartment is earthquake resistance- seismic zone-2 compliant.

### FITNESS CENTER

The complex will have excellent gymnasium with cardio-weight lifting - aerobic & massage room, facilities like chess, card room & reading room with excellent environment of togetherness.

### BEAUTIFICATION OF THE COMPOUND

The compound is planned to have excellent & beautiful entry gate and fountain with statue near entry gate and green trees and plants all around the complex for soothing & picturesque view of building features.

### EXTERIOR

Major walls are proposed to be finished with all season paints from branded companies in different colors as per the architect and railing on all the balconies with glass fixtures on the top as per the exterior view designed.

### INTERIOR

POP leveled internal walls finished with paint of branded companies, decorative cornices in living, dining and bedrooms.

### FLOORINGS

Imported flooring in drawing & dining area, wooden flooring in master bed room and vitrified tiles in other rooms and kitchen. Anti- skid tiles in bathroom and balconies.

### DOOR & WINDOWS

Wooden doors havins veener finish on main door & laminated internal doors, ano./ pc aluminum/ upvc sliding french windows to balconies.

### KITCHEN

Designer modular kitchen with overhead cabinets, exhaust fan and electric chimney.

### TOILETS

Wall- hung wc with concealed cistern in all bathrooms, cp fitting - jaguar and equivalent brands, glass partition for wet area with rain water fittings.

### AIR CONDITIONING

Provision of concealed drainage, copper tubing arrangements for split ac installation in bedroom and drawing - dining areas.

# Location

...exclusive and peaceful, yet connected & convenient!

Living at King's Landing gives you the best of both worlds. Located in the rapidly developing area of Tilak Nagar, the advantages are many : proximity to Raja Park, ease of connectivity to Airport & Railway Station both..... It strikes a perfect work-life balance.



Your Home Your Empire.....

# King's Landing



## the Group

DND Group takes the prerogative of introducing itself as a team of young, committed & foresighted individuals, geared up to meet the real estate needs of all strata of society. It is slowly & steadily achieving mile stones under the profound leadership of its founders backed by the energy of the younger generation.

The team of DND Group comprise of Dilip Kumar Agarwal, a business stalwart having more then 25 years of enriched experience in the field of real estate development, ensure the meticulous planing of sales and finance of the group as an entity. His vision and pragmatic approach pave the path for the team members to achieve newer standards of growth and skill.



Dev Suman Saini, an entrepreneur & a businessman having technical academic background & hands on experience in managing industries at various stages of development, is associated with the group since last 20 years. His multi dimensional experience is an asset to the group in coordinating core activities of the group, so as to deliver qualitative & quantitative results.



Ashok Tejwani (Geologist) is a name committed to serve the real estate since last 10 years. He has deep insight & excellent approach to different projects with efficient spatial design. Giving top priority to basic principle laid down by prominent authorities working in this sector. He provides a great combination of brimful devotion together with qualitative analysis to the project.



Manish Bhatia is a young, energetic civil engineer with a forward looking bent of time, having 5 years of experience in the area of project execution. His approach towards application & execution of latest technological trends in construction industry ensures fast & smooth man & material handling on projects.



## Prestigious projects

### Ongoing Projects



SAMRIDDI RESIDENCY  
Jagatpura, Jaipur



ROYAL PLATINUM  
Jagatpura, Jaipur



GOVIND REGENCY  
Tilak Nagar, Jaipur



LAKSHDEEP  
Sethi Colony, Jaipur