



---

# The Hummingbird

---

*by*

 EVANTHA  

---

GREENSPACE

# EXPERIENCE LIFE

Surrounded by convenience in Indiranagar, The Hummingbird is built on a North-East corner plot brimming with abundant sunlight and fresh air. The 7 apartments have 5 different layouts including 3 duplexes.



A brilliant, futuristic design with a host of modern amenities. Here, your world brims with peace and tranquility, even though it's just a short walk away from all your everyday necessities and its proximity to many of the finest restaurants, schools, hospitals, malls and namma metro.

At the Hummingbird, space is remarkably well planned with plenty of greenery and sunshine, offering you a perfect balance of community and personal spaces. The luxury of rooftop gardens, spacious decks and a beautiful landscape is another striking feature.

Revel in an incomparably unique lifestyle and invigorating location in the very heart of Indiranagar. This is the space for an indulgence lasting a lifetime. Relaxing in the comfort of your living room you can sure plan how each day ends.





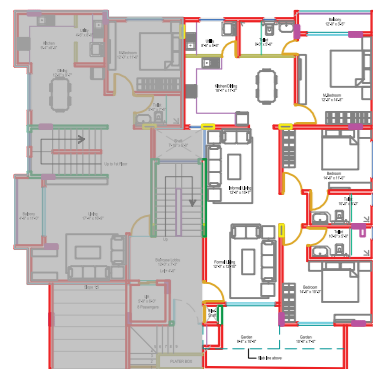
Living spaces - uncluttered, imaginative and secure - it's the space you have to create a home that you have always dreamt about. Progressive architecture, international styling, space maximization and management with the finest specifications... just some of the little details to make you feel at home.

Will it be star-gazing, a book or a conversation? No matter what you take along with you, the experience on the terrace is one that you will always look forward to. The Hummingbird offers all the modern amenities and conveniences featuring a gymnasium, steam room, rooftop socialising area and a gazebo.



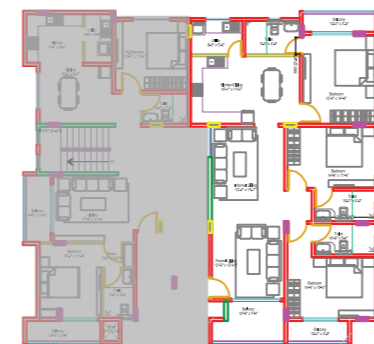
# TYPE A

1990 sq ft  
Ground Floor



# TYPE B

1891 sq ft  
1/2/3 Floor





1st Floor



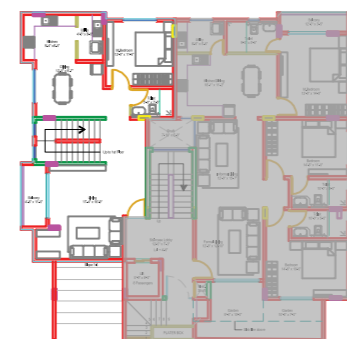
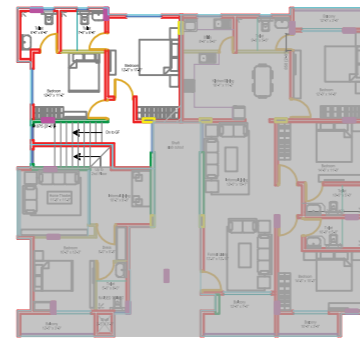
Ground Floor



**TYPE C**  
1940 sq ft  
Duplex



1st Floor



Ground Floor





# TYPE D

2118 sq ft  
Duplex

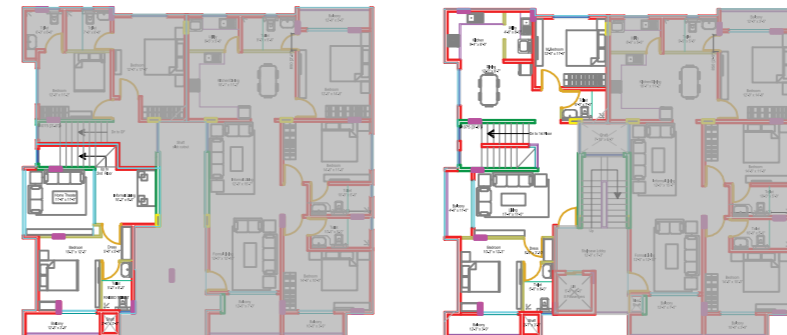
1st Floor



2nd Floor



1st Floor

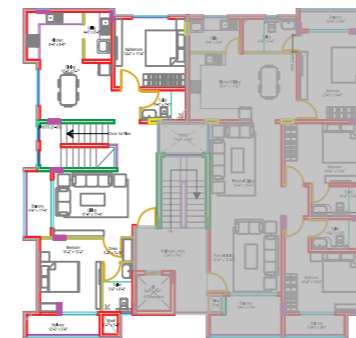


2nd Floor



# TYPE E

2215 + 509 sq ft  
Duplex with private garden



## SPECIFICATIONS

### Infrastructure

- Structure - RCC Framed structure
- Walls - Concrete block masonry

### Flooring

- Living & Dining area - Italian Marble flooring
- Master Bedroom & Other Bedrooms - Wooden flooring
- Kitchen & Utility - Vitrified tiles
- Balcony - Rustic finish tiles
- Toilet - Anti-skid ceramic tiles

### Doors & Windows

- Main door - Teak wood frame and door
- Internal Doors - Teak Finish Veneered shutters
- Windows - UPVC

### Kitchen & Utility

- Granite platform with 2' dado above the counter
- Stainless Steel bowl sink
- Utility with Dishwasher and Washing Machine Point
- Chimney Exhaust Provision

### Bathrooms

- Jaguar / Roca / imported C.P. Fittings
- Sanitary - Imported wash basin & EWC
- Marble counter for Wash Basin in all Bathrooms with ceramic imported tiles full height Dado
- Glass shower enclosure for Master bathroom

### Common Areas & Staircase

- Flooring - Marble in Entrance Lobby
- Granite steps with MS railing

### Lift

- Otis / Schindler with elegant interior panels and safety features

### Electrical

- Home Automation provision
- Modular Switches - Legrand / Panasonic with Finolex/Vguard cables
- Air-Condition & Telephone points in living room and bedrooms
- 24 hours Generator backup for common areas & apartment

### Security

- CCTV at High Security zones
- Video Door Phones
- High Security locks at the Main Door

### Painting

- Weather proof Apex Ultima paint for external walls
- Premium Emulsion for internal walls
- Enamel paint for MS works

### Solar & Rainwater Harvesting

- Provision for solar water heater
- Rain water harvesting for utility purpose

### TV / Phone / Internet Infrastructure

- Provision for DTH Cable with dish provision on terrace
- Intercom facility extended to every flat connected to security
- Phone and Internet option through same line

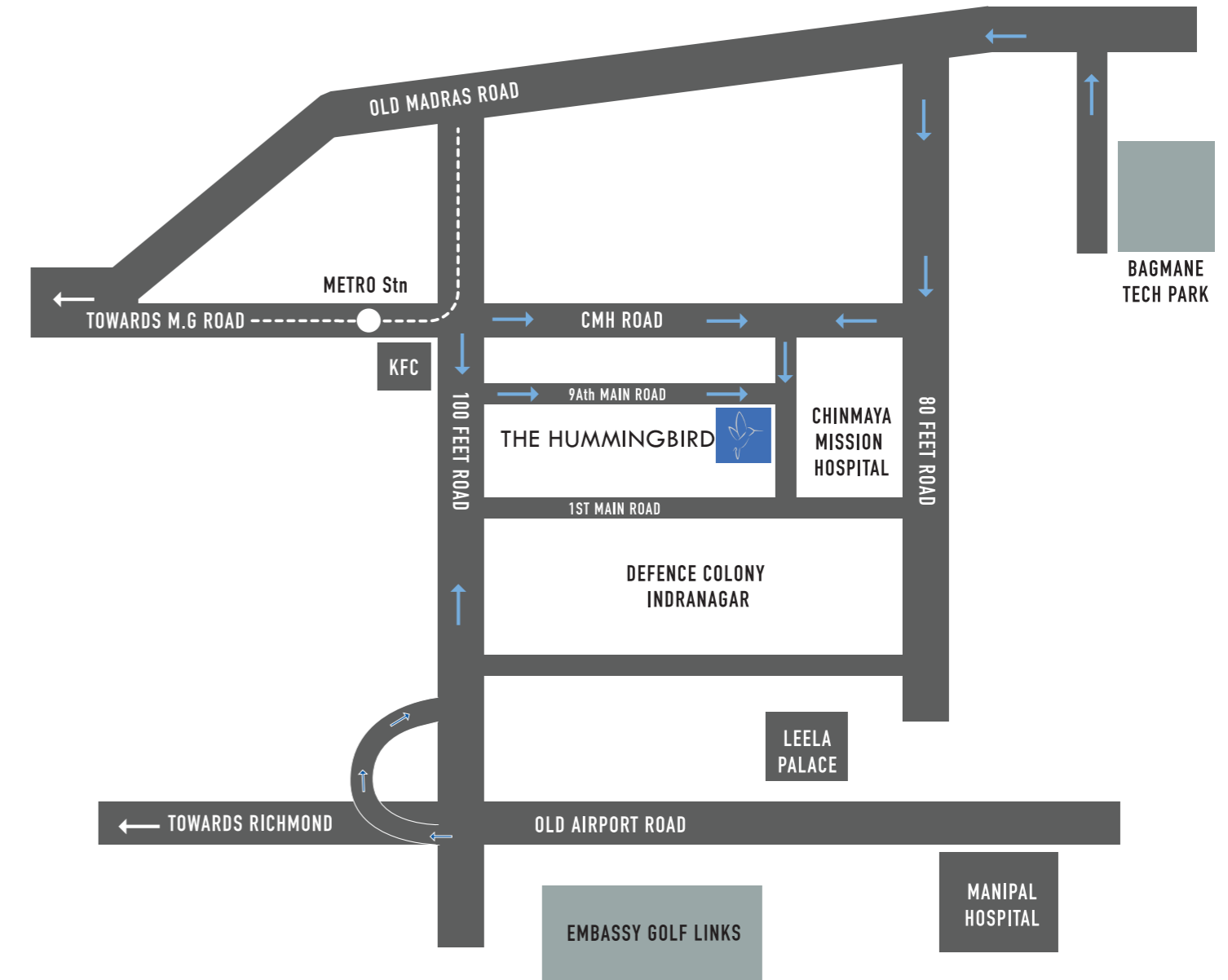
### Parking Space

- Covered parking at basement level

### Terrace

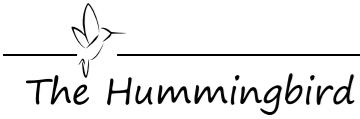
- Designer landscaping with leisure seating
- Multi gym
- Steam Room

## LOCATION MAP



# CONTACT US

+91 99454 33996  
+91 99000 45996



## OTHER ONGOING PROJECTS

### PROJECT CONSULTANTS

Architect - Architecture Continuous  
Structural - Eco Consultants  
Electrical - Alpha Engineers  
Plumbing - Prism Consultants

A Project by

### EVANTHA GREENSPACE

No. 285, Rama Iyengar Road, V.V.Puram,  
Basavanagudi, Bangalore - 560 004  
www.evantha.com  
info@evantha.com

### Site Address

704, 9th A Main, (Next to CMH Hospital)  
Binnamangala, Defence Colony,  
Indiranagar, Bangalore - 560 038



MM Road, Frazer Town  
*Symphony*



Jayanagar 4th T Block  
*tulsī*



Singasandara, Begur Main Road  
**SPRINGWOODS**



This brochure is purely conceptual and not a legal offering. 3D perspective views are artistic impressions only. Visual representations of various amenities and facilities are indicative only. Developers/Promoters reserve the right to change any plan, specification without prior notice.



YOU CALL IT HOME,  
WE CALL IT PASSION!

The logo icon consists of a stylized 'E' shape formed by three horizontal bars on the left and a vertical bar on the right, with a small square at the top right corner.

EVANTHA

---

GREENSPACE

[www.evantha.com](http://www.evantha.com)