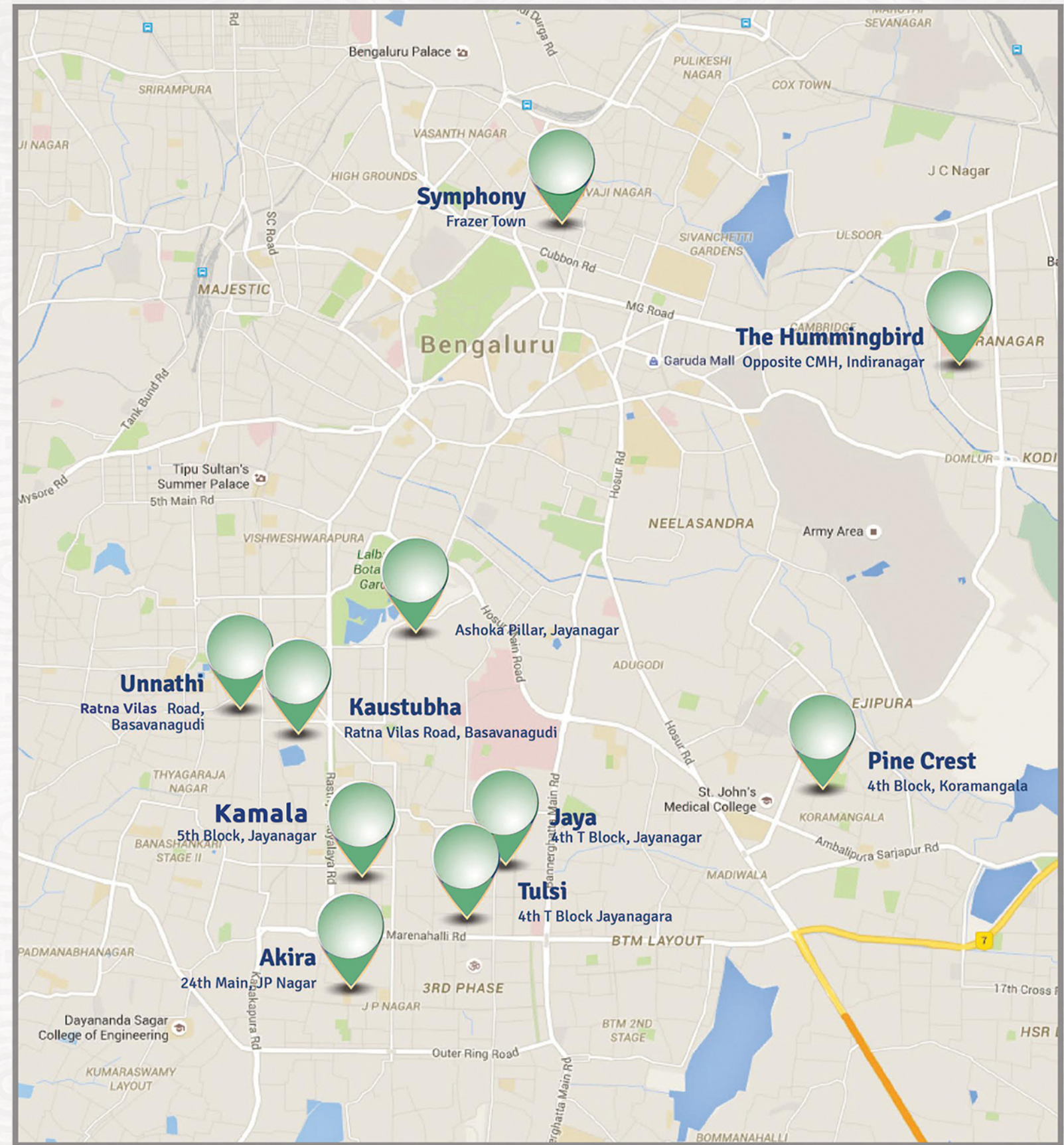
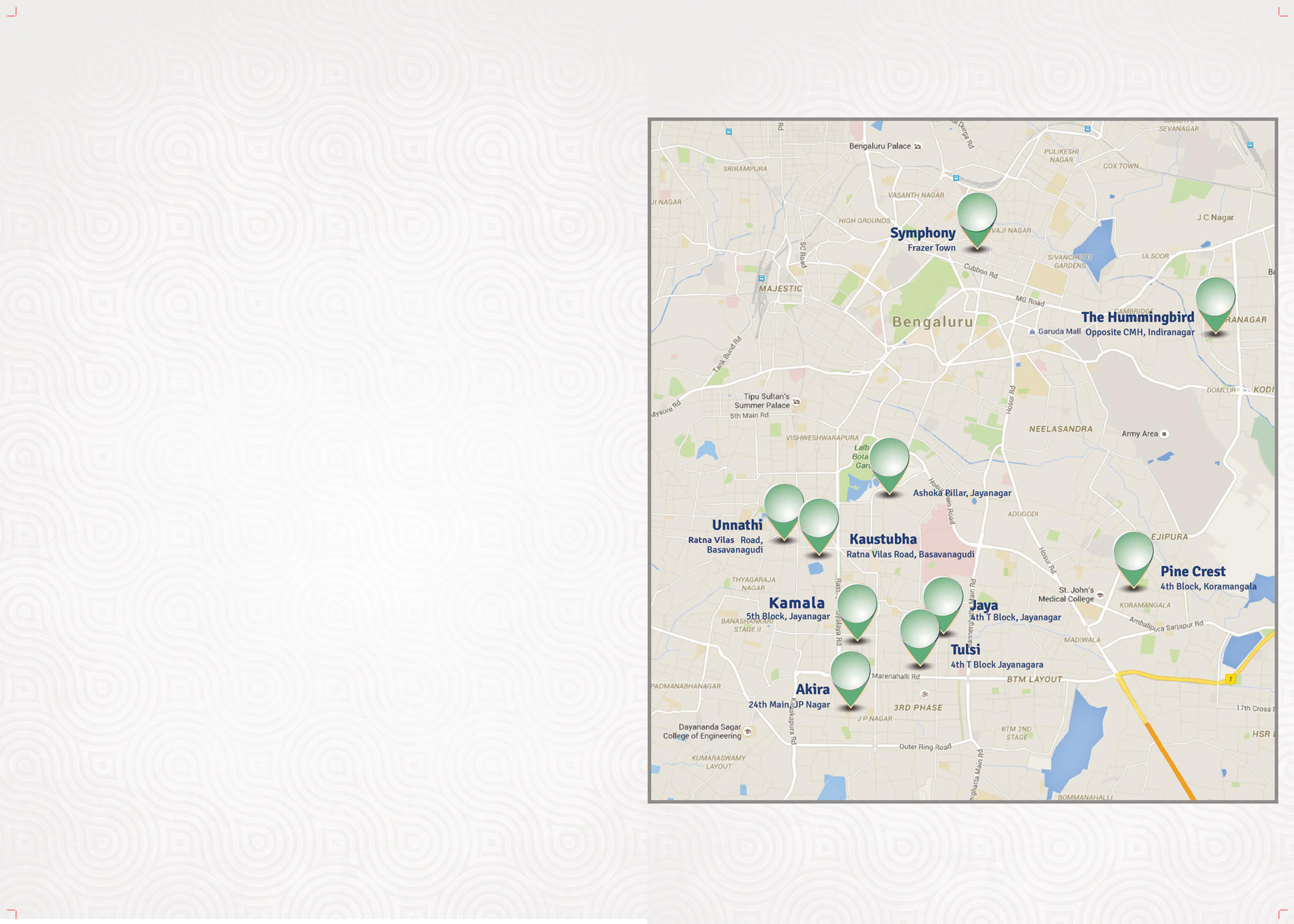


jaya

 EVANTHA

[www.evantha.com](http://www.evantha.com)









# Jaya

## An Enviably Location

Jayanagar is one of the most sought after residential areas of Bangalore. It is the Largest and the best planned neighbourhood of the city.

Having a rich cultural heritage, jayanagar has many good things to offer to all age groups. The shopping complex, eateries, clubs, libraries, bookstores, vegetable markets, playgrounds, religious establishments, cinemas and schools, you name it and jayanagar has it

## CONTACT US:

+91 80882 20033

+91 99454 33996

sales@evantha.com

# Jaya

## PROJECT CONSULTANTS

Architect – Architecture Continuous  
Structural – Manjunath Consultants  
Plumbing – Prism Consultancy  
Electrical – Alpha Engineers

## SITE ADDRESS

No. 1220, 34th 'C' cross, 28th main,  
Jayanagar, Bangalore - 560 041

A Project by:



No. 285, Rama Iyengar Road, V.V.Puram,  
Basavanagudi, Bangalore - 560 004

www.evantha.com  
info@evantha.com

## RECENT PROJECTS



*tulsí*

4 T Block Jayanagar



*The Hummingbird*  
Indiranagar



*Unnalhi*  
Basavanagudi



*Pine Crest*  
Koramangala





# SPECIFICATIONS

## Infrastructure

- Structure – RCC Framed structure
- Walls – Concrete block masonry

## Flooring

- Living & Dining area – Italian Marble flooring
- Master Bedroom & Other bedrooms – Wooden flooring
- Kitchen & utility - Vitrified tiles
- Balcony – Rustic finish tiles
- Toilet - Anti-skid ceramic tiles

## Doors and Windows

- Main door - Teak wood frame and door
- Internal Doors - Teak Finish Veneered shutters
- Windows -Branded UPVC with Kommerling German profile

## Kitchen and Utility

- Granite platform with 2'dado above the counter
- Carylil / Franke sink for Kitchen & Utility
- Utility with Dishwasher/Washing Machine Point
- Chimney Exhaust Provision
- Copper Gas Line

## Solar & Rainwater Harvesting

- Solar water heater
- Rain water harvesting for utility purpose

## Security

- CCTV at High Security zones
- High Security locks at the Main Door

## Lift

- Otis / Schindler with elegant interior panels and safety features

## Electrical

- Modular Switches - Panasonic with Finolex / branded cables
- Air-Condition & Telephone points in living room and bedrooms
- 24 Hours Generator backup

## Common Areas & Staircase

- Flooring - Italian Marble in Entrance Lobby
- Granite steps with MS railing
- Covered Car park

## Painting

- Weather proof Apex Ultima paint for external walls
- Premium Emulsion for internal walls
- Enamel paint for MS works

## Bathrooms

- Grohe imported C.P. Fittings
- Sanitary - Toto / Roca / Imported wash basin & EWC
- Counter for Wash Basin in Bathrooms
- Ceramic imported tiles Dado up to 7'0" height

## TV/Phone/Internet infrastructure

- Provision for DTH Cable with dish provision on terrace
- Intercom facility extended to every flat connected to security
- Phone and Internet option through same line

## Terrace

- All round Landscaping
- Mini gym
- Multipurpose service counter for parties
- Powder room
- Gazebo with leisure seating
- Children's play area



# A special place to realize all your Dreams

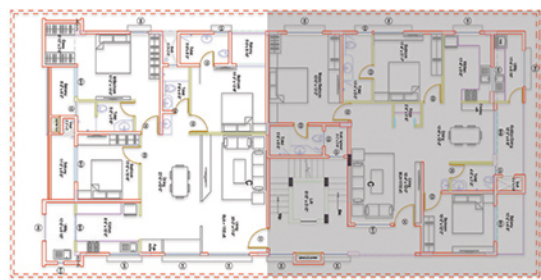
At JAYA, spaces are remarkably well-planned with plenty of sunshine and ventilation. Revel in an invigorating location and incomparably unique lifestyle in the very heart of jayanagar. This is the space for an indulgence lasting a lifetime. Relaxing in the comfort of your living room, you can give life to all your dreams





# TYPE A

1705 sq ft



# TYPE B

1705 sq ft

