

|tulsí



 EVANTHA | tulsí

Sipping a cup of coffee, reading the morning newspaper and you see the birds chirping in the lush green trees.. is not a dream anymore!





Standing tall and elegant over the heartthrob of the city - Jayanagar - buzzing with all the action and excitement, 'Tulsi' is where someone like you ought to be 'Living In Style'!



▫ Security has a special place

It will definitely not be an exaggeration if we boast that we are located in one of the most beautiful residential areas in Bangalore. Yes, that's what it is - Jayanagar!

Having a rich cultural heritage, Jayanagar has many good things to offer to all age groups. The shopping complex, eateries, clubs, libraries, bookstores, vegetable markets, playgrounds, religious establishments, cinemas and schools, you name it and Jayanagar has it.

The beautiful, calm roads take you down the memory lane and make you wonder if you really are in Bangalore! And you will wait for the next spring if you have already experienced the magnificent beauty and grandeur of the Basant Rani trees that are aplenty in Jayanagar!



▫ Waiting lounge **ambience** might entice your guests to linger in the parking floor

- **Large decks** and privatized sit-outs along with the provision of landscaping at every level
- Projected window sills bring **greenery** inside the house





LIVING A DREAM...

Strategically designed 'Tulsi' offers you magical views of greenery. Spacious living room with lavish **Italian marble**, master bedroom with **wooden flooring** and **teak wood** doors and windows, completely classy and contemporary, just right to suit your needs, are the mirrors to the way you like to live 'In Style'!



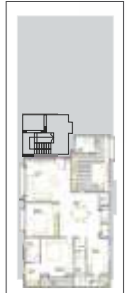
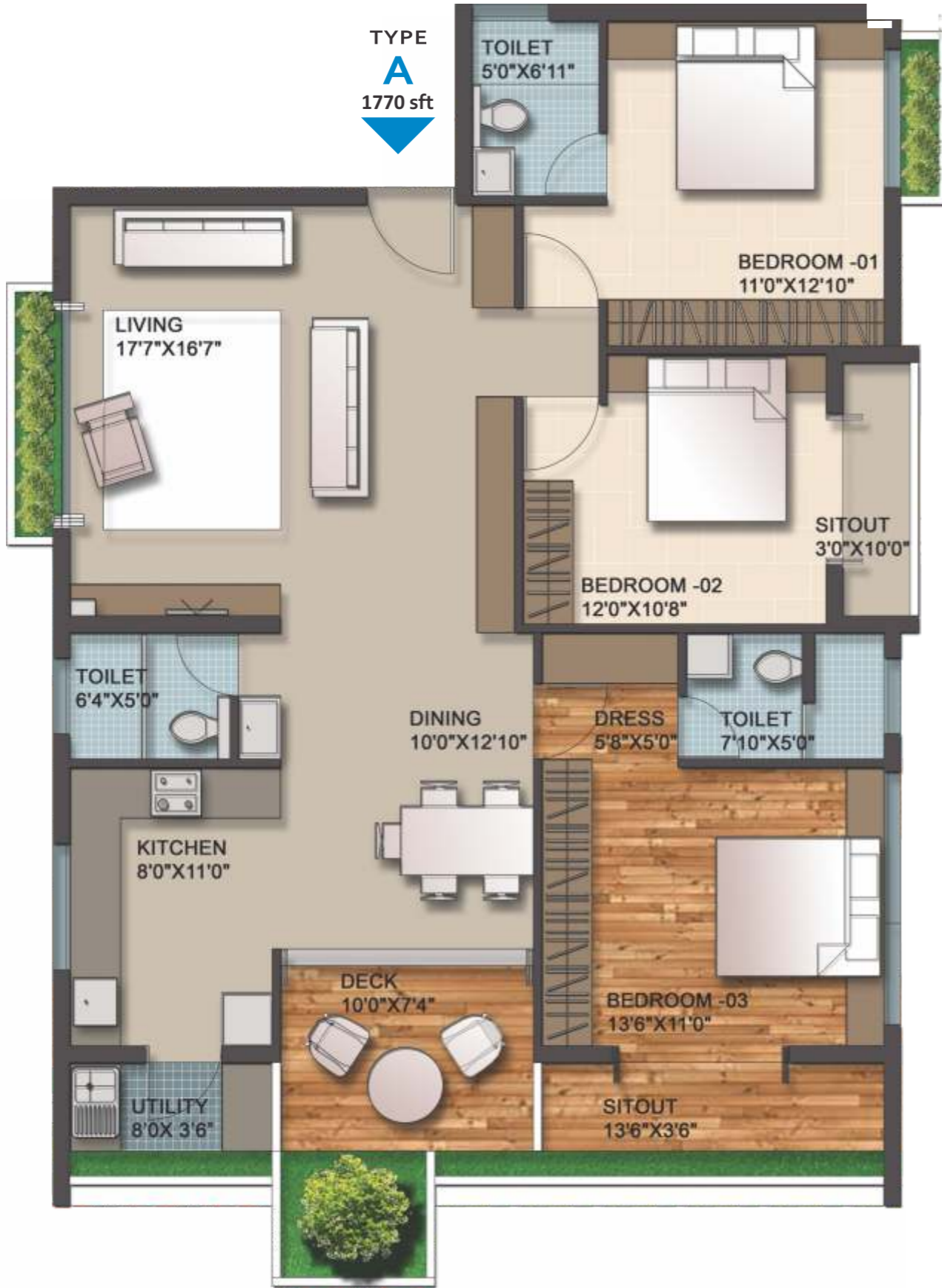
□ Designer Landscaping on the terrace to elevate your mood



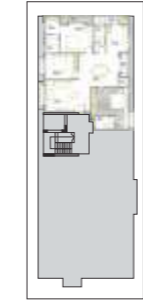
□ Leisure seating for a relaxing evening

FLOOR PLANS

TYPE
A
1770 sft



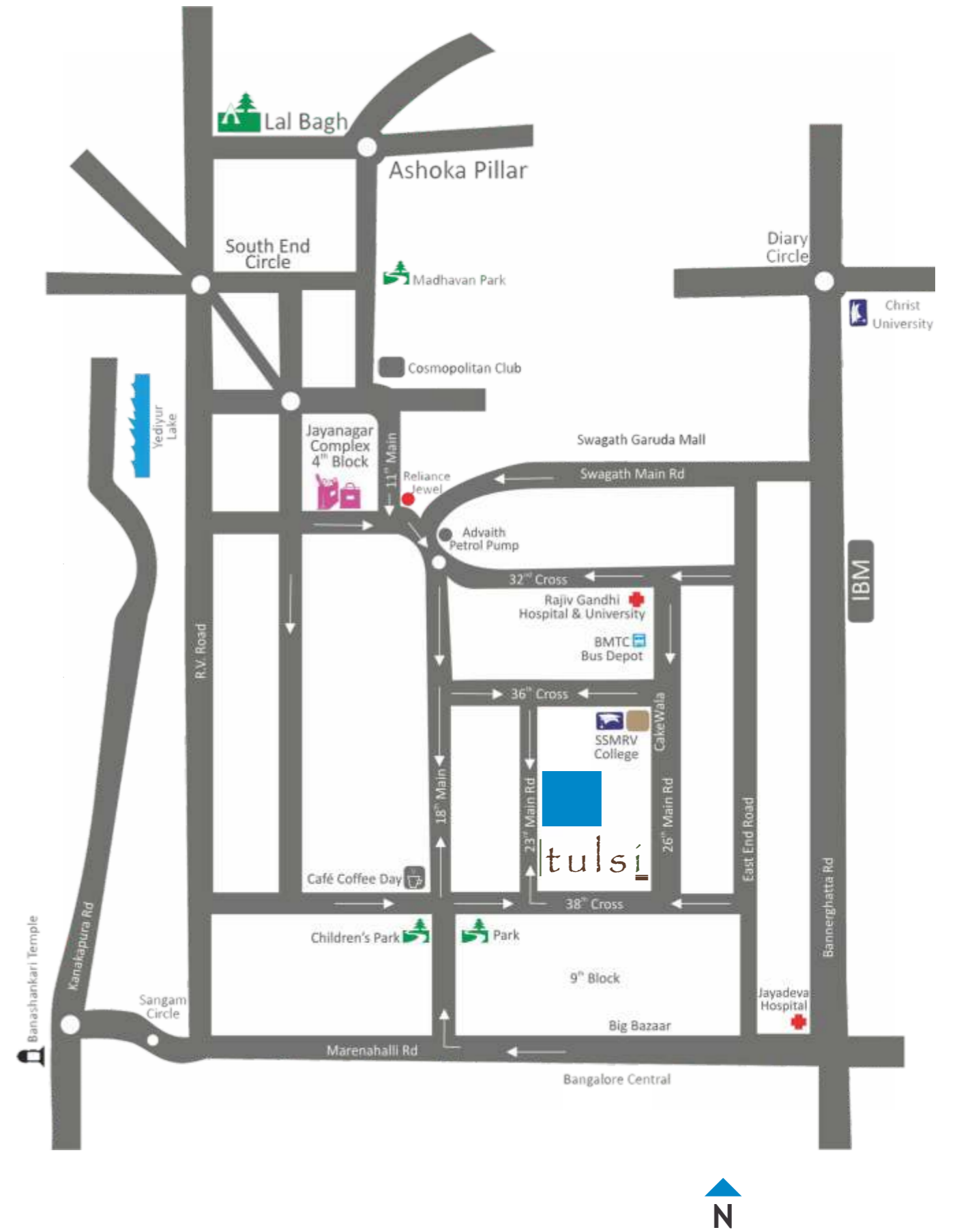
TYPE
B
1670 sft



TERRACE PLAN



LOCATION MAP



SPECIFICATIONS

STRUCTURE & WALLS

- Structure - RCC Framed structure
- Walls - Concrete block masonry walls

FLOORING

- Living, Dining, Kitchen & Bedrooms - Italian Marble flooring
- Master Bedroom - Wooden flooring
- Balcony & utility - Rustic finish tiles
- Toilet - Anti-skid ceramic tiles

DOORS & WINDOWS

- Main door - Teak wood frame and door
- Internal Doors - Teak Finish Veneered shutters
- External Doors and Windows - Teak Wood
- Designer French windows

KITCHEN & UTILITY

- Granite platform with 2' dado above the counter
- Stainless Steel Single bowl sink
- Centralized Gas connection with Gas detector for additional safety
- Utility with Dishwasher and Washing Machine Point
- Chimney Exhaust Provision

BATHROOMS

- Jaguar / Roca / imported C.P. Fittings
- Sanitary - Imported wash basin & EWC
- Marble counter for Wash Basin in all Bathrooms with ceramic imported tiles Dado up to 7'0" height
- Glass shower enclosures for bath area except in common bathroom

COMMON AREAS & STAIRCASE

- Flooring - Italian Marble in Entrance Lobby
- Granite steps with MS railing

LIFT

- Johnson / equivalent with elegant interior panels and safety features

ELECTRICAL

- Modular Switches - Legrand with Finolex cables
- Air-Condition & Telephone points in living room and bedrooms
- Generator backup 24 hours, 100% backup for common areas & apartment

SECURITY

- Building Management System
- CCTV at High Security zones
- Video Door Phones to screen visitors at the entrance
- High Security locks at the Main Door

PAINTING

- Weather proof Apex Ultima paint for external walls
- Royal Emulsion for internal walls
- Enamel paint for MS works
- Polish for doors and windows shutters

SOLAR & RAINWATER HARVESTING

- Provision for solar water heater
- Rain water harvesting for utility purpose

TV / PHONE / INTERNET INFRASTRUCTURE

- Provision for DTH Cable with dish provision on terrace
- Intercom facility extended to every flat connected to security
- Phone and Internet option through same line

PARKING SPACE

- Covered parking at stilt level with Car Wash Area
- To be paved with cobble stones/cement blocks

TERRACE

- Designer landscaping with leisure seating
- Mini gym



Evantha is an integrated real estate development company having its time tested foundation set in Bangalore's construction industry.

We strive for superior quality and unique designs that are elegantly blended to create contemporary structures. With the backing of decades of experience in construction, we focus on timely deliveries and satisfied customers.

ONGOING PROJECTS

SPRINGWOODS

117 Luxury 2 & 3 BHK Apartments at Singasandra, off Hosur road (Begur)
(In association with Vijaya Enterprises)



GRAINS OF SAND

Modern 2 BHK Apartments at Yadavgeri, Mysore
(In association with Oxygen)



PROJECT CONSULTANTS



Architect	– Envisage
Structural	– Kalkura Associates
Electrical & Plumbing	– EDA Consultants
Legal	– H C Shivakumar

A Project By

EVANTHA DEVELOPERS PVT LTD

No 285, Ground Floor, Rama Iyengar Road
V.V. Puram, Basavanagudi, Bangalore 560004
www.evantha.com

Site Address

No. 982, 23rd Main, 36th Cross, 4 T-Block,
Jayanagar, Bangalore- 560041

This brochure is purely conceptual and not a legal offering. 3D perspective views are artistic impressions only. Visual representations of various amenities and facilities are indicative only. Developers / Promoters reserve the right to change any plan, specification without prior notice.



CONTACT US

+91 99000 45996

+91 80 4166 8077

info@evantha.com



www.evantha.com