



Eureka
HEIGHTS



67% Open & Green Area

Gated Complex with Automated Entrance

Well-lit Wide Roads

Dedicated Parking for Residents

CCTV at Key Points

Picturesque Surroundings

It is a different world

Situated in the lush surroundings of Guwahati, Eureka Heights is the finest lifestyle statement that offers you everything – convenience, comfort, completeness and class. So that life becomes a discovery at every step for every resident.

In editions of 3 and 4 bedroom apartments, this complex has been conceived to match up with the changing mindsets of the most discerning customers. It ensconces a new modernism, making one of the most coveted addresses in Guwahati.



- 22 kms from Airport
- 2.20 kms from Railway Station
- 13 kms from ISBT
- 1.60 kms from Nehru Stadium
- 1 km from Saint Mary's School
- 1.80 kms from Reserve Bank of India
- 1.80 kms from High Court
- 3 kms from Paltan Bazar
- 2.20 kms from Cotton College
- 1.70 kms from B. Baruah College
- Great Accessibility from any Point in the City

A world that is centrally located

Eureka Heights offers the best location advantage to the incumbent. The objective is to present them with great connectivity and transport facilities within Guwahati and other neighbouring places. Hi-speed connectivity is also a regular feature that makes this place a much sought after address in the city.

The place also offers the fascinating advantage of excellent 360 degree view of the entire milieu that surrounds the complex along with the mighty river, Brahmaputra.





Apartments in Editions of 3 & 4
Bedrooms

Excellent Ventilation & Natural Light

Scientific Space Management

Neo-rich Specifications

Perfect Balance between Aesthetics
and Functionality

Latest Safety Features

Exterior in Harmony with Surroundings

A world that redefines art



Grand, majestic and really exclusive in demeanour, this complex exudes remarkable freshness. The interiors full of artistry and efficient use of space are the outcome of strokes of imagination and beauty.

The assortments have been exclusively detailed to add functionality to its creative aspects. This is what makes the complex extremely desirable and pride-worthy.





A world of fresh living

Eureka Heights is a bundle of joy and excitement as it offers maximum to its residents. Other than safety and security, and shopping convenience, the complex is an ensemble of a multi-activity hub that offers everything you might think of. Various leisure amenities provided in the residential complex keeps you fit & healthy and helps you enjoy life like never before.



- Extensive Jogging Track
- Dedicated Kids' Play Area
- Abundant Green Space
- Well Equipped Gymnasium
- Leisure Sitting Areas
- Clubhouse
- Swimming Pool
- Mall at Close Vicinity
- Retail Chains Near by
- Entertainment Zone
- Pollution Free Green Environment



A world of new assortments

The complex offers a host of conveniences and services that are unique only to Eureka Heights. Every aspect of security and comfortable living has been taken care of here. The objective is to allow all residents a new completeness in life.

Earthquake Resistant Structures

24x7 Power Supply

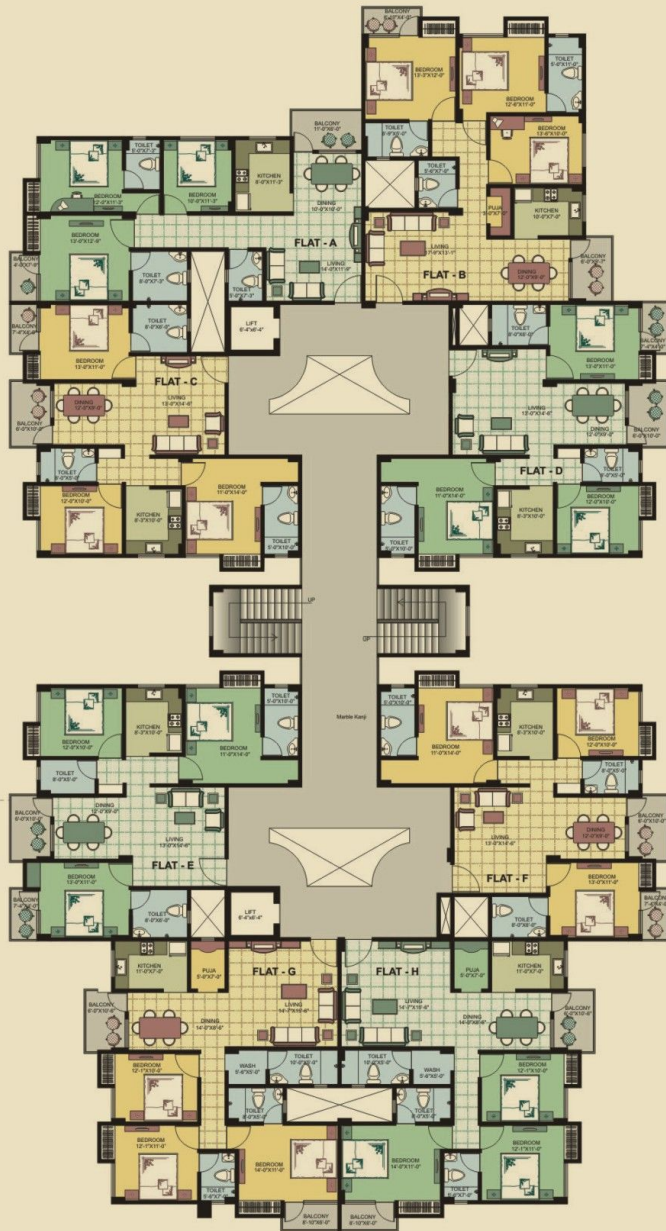
Round-the-clock Hi-tech Security

24 hours Water Supply

Professionally Managed Services



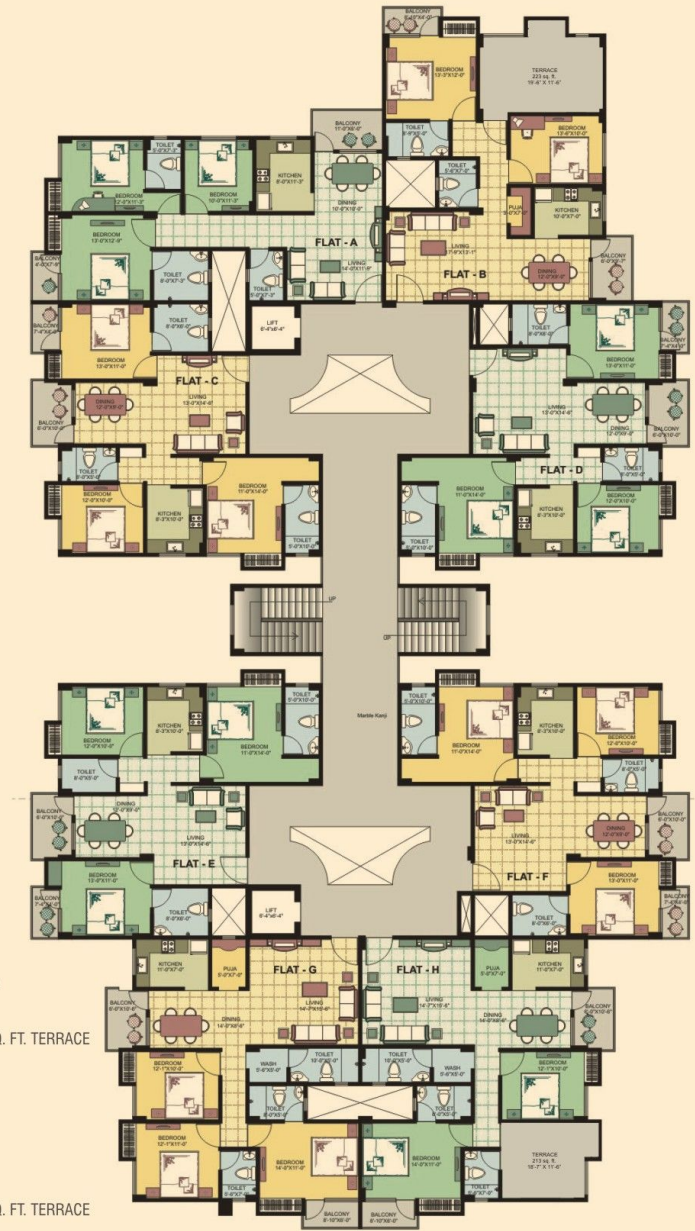
FIRST TO FIFTH FLOOR PLAN



BLOCK - A

FLAT	SUPER BUILT UP AREA
FLAT A	1476 SQ. FT.
FLAT B	1606 SQ. FT.
FLAT C	1514 SQ. FT.
FLAT D	1514 SQ. FT.
FLAT E	1514 SQ. FT.
FLAT F	1514 SQ. FT.
FLAT G	1627 SQ. FT.
FLAT H	1627 SQ. FT.

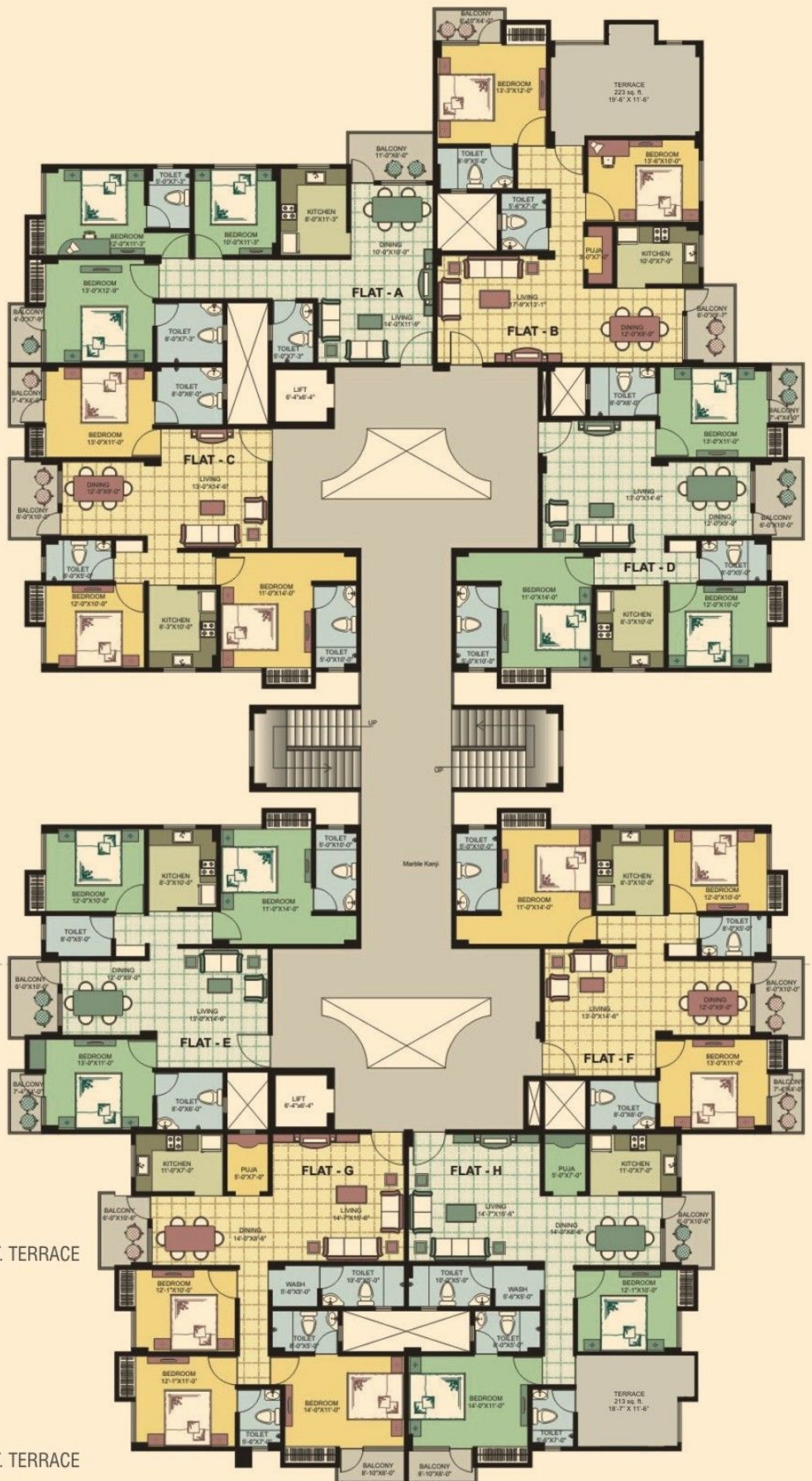
SIXTH FLOOR PLAN



BLOCK - A

FLAT	SUPER BUILT UP AREA
FLAT A	1476 SQ. FT.
FLAT B	1331 SQ. FT. + 223 SQ. FT. TERRACE
FLAT C	1514 SQ. FT.
FLAT D	1514 SQ. FT.
FLAT E	1514 SQ. FT.
FLAT F	1514 SQ. FT.
FLAT G	1627 SQ. FT.
FLAT H	1391 SQ. FT. + 213 SQ. FT. TERRACE

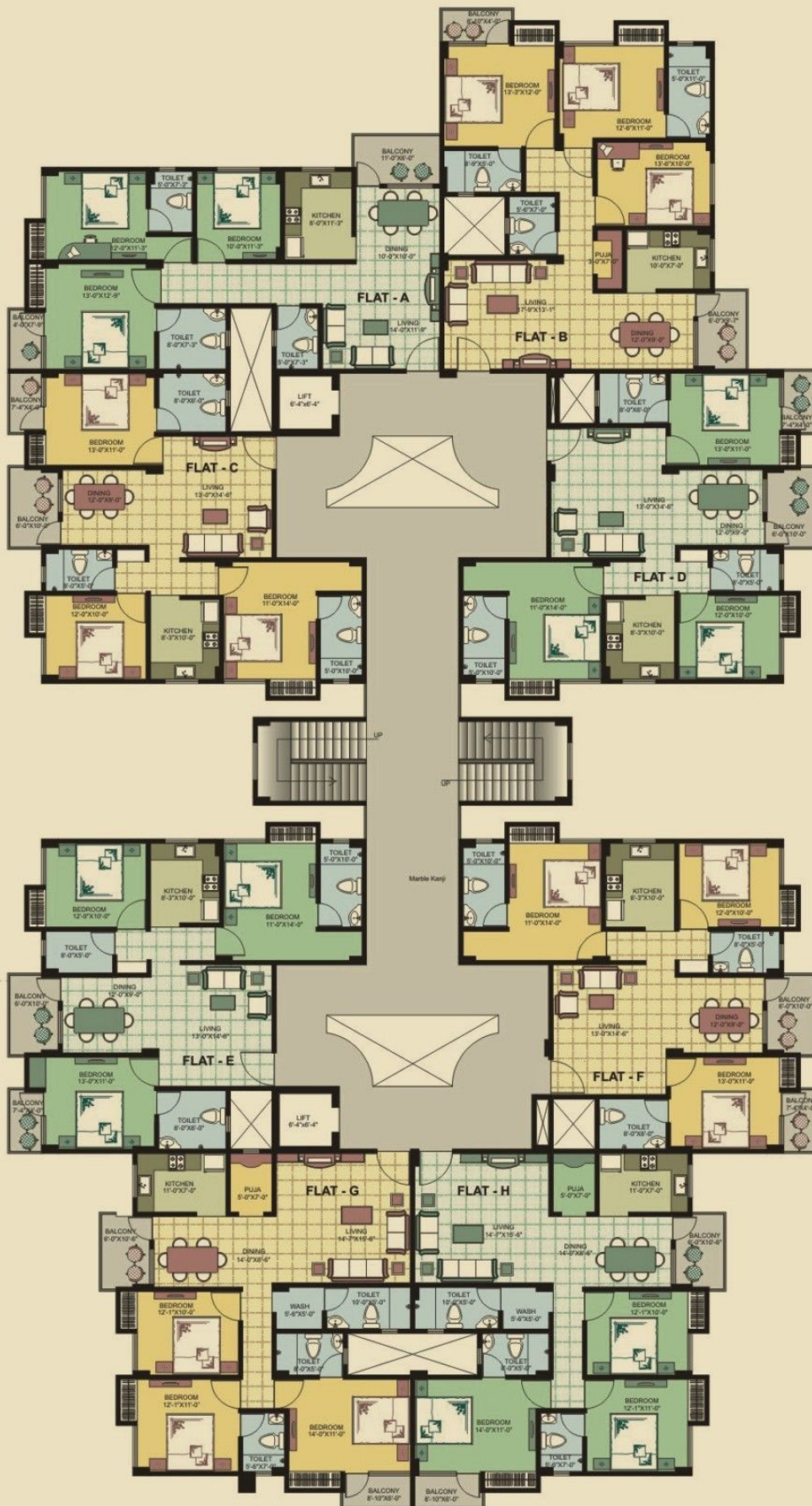
SIXTH FLOOR PLAN



BLOCK - A

FLAT	SUPER BUILT UP AREA
FLAT A	1476 SQ. FT.
FLAT B	1331 SQ. FT. + 223 SQ. FT. TERRACE
FLAT C	1514 SQ. FT.
FLAT D	1514 SQ. FT.
FLAT E	1514 SQ. FT.
FLAT F	1514 SQ. FT.
FLAT G	1627 SQ. FT.
FLAT H	1391 SQ. FT. + 213 SQ. FT. TERRACE

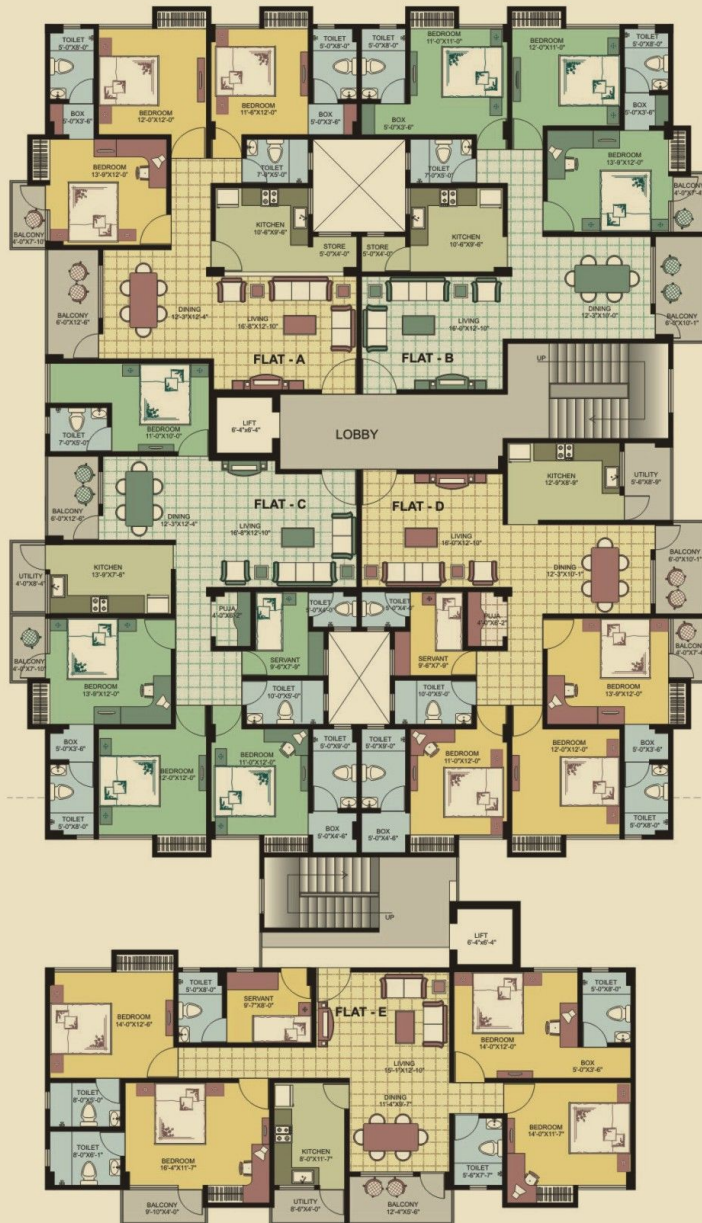
FIRST TO FIFTH FLOOR PLAN



BLOCK - A

FLAT	SUPER BUILT UP AREA
FLAT A	1476 SQ. FT.
FLAT B	1606 SQ. FT.
FLAT C	1514 SQ. FT.
FLAT D	1514 SQ. FT.
FLAT E	1514 SQ. FT.
FLAT F	1514 SQ. FT.
FLAT G	1627 SQ. FT.
FLAT H	1627 SQ. FT.

SIXTH FLOOR PLAN

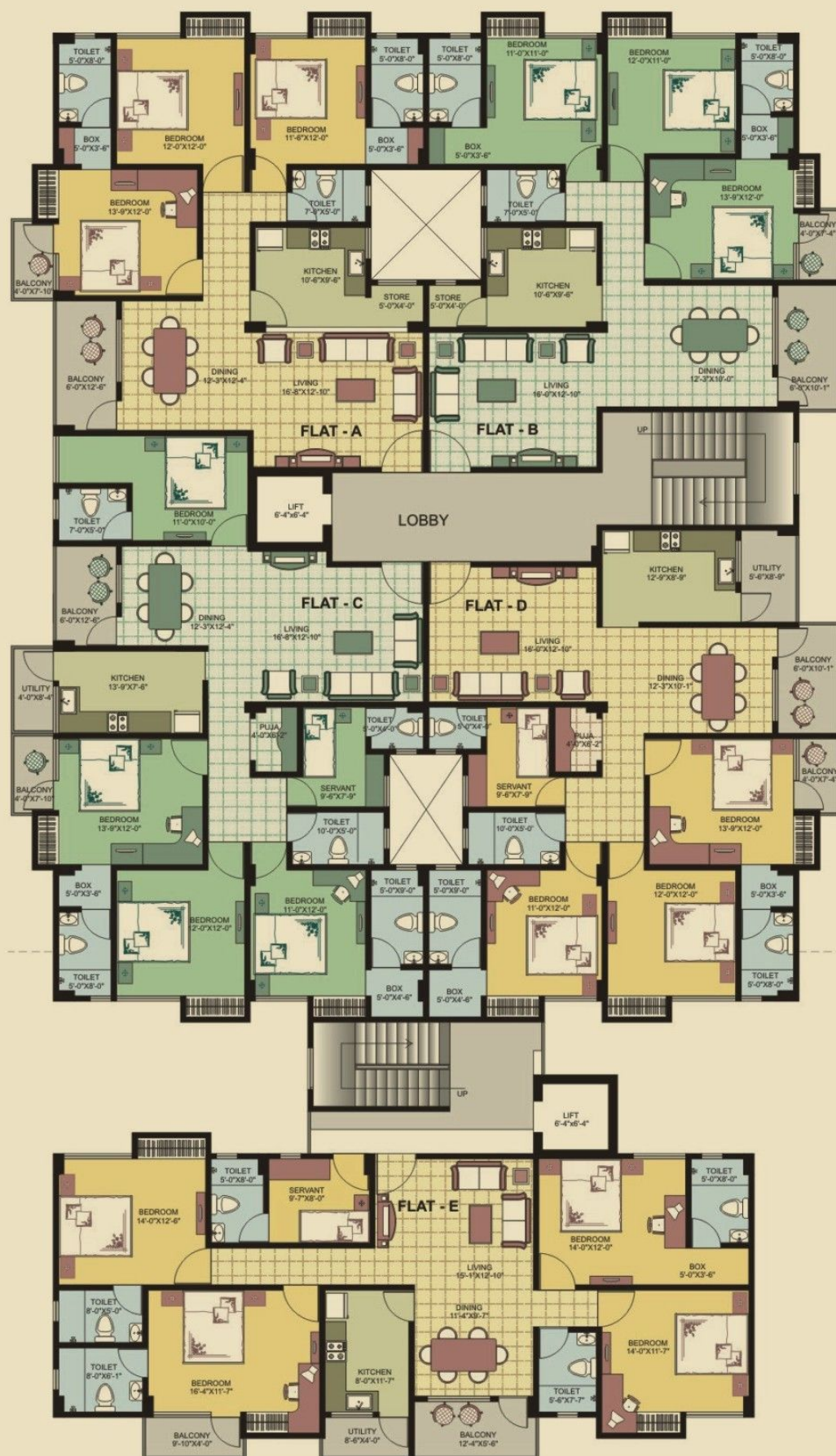


BLOCK - B

FLAT	SUPER BUILT UP AREA
FLAT A	1691 SQ. FT.
FLAT B	1691 SQ. FT.
FLAT C	2148 SQ. FT.
FLAT D	1944 SQ. FT.
FLAT E	1917 SQ. FT. + 227 SQ. FT. TERRACE



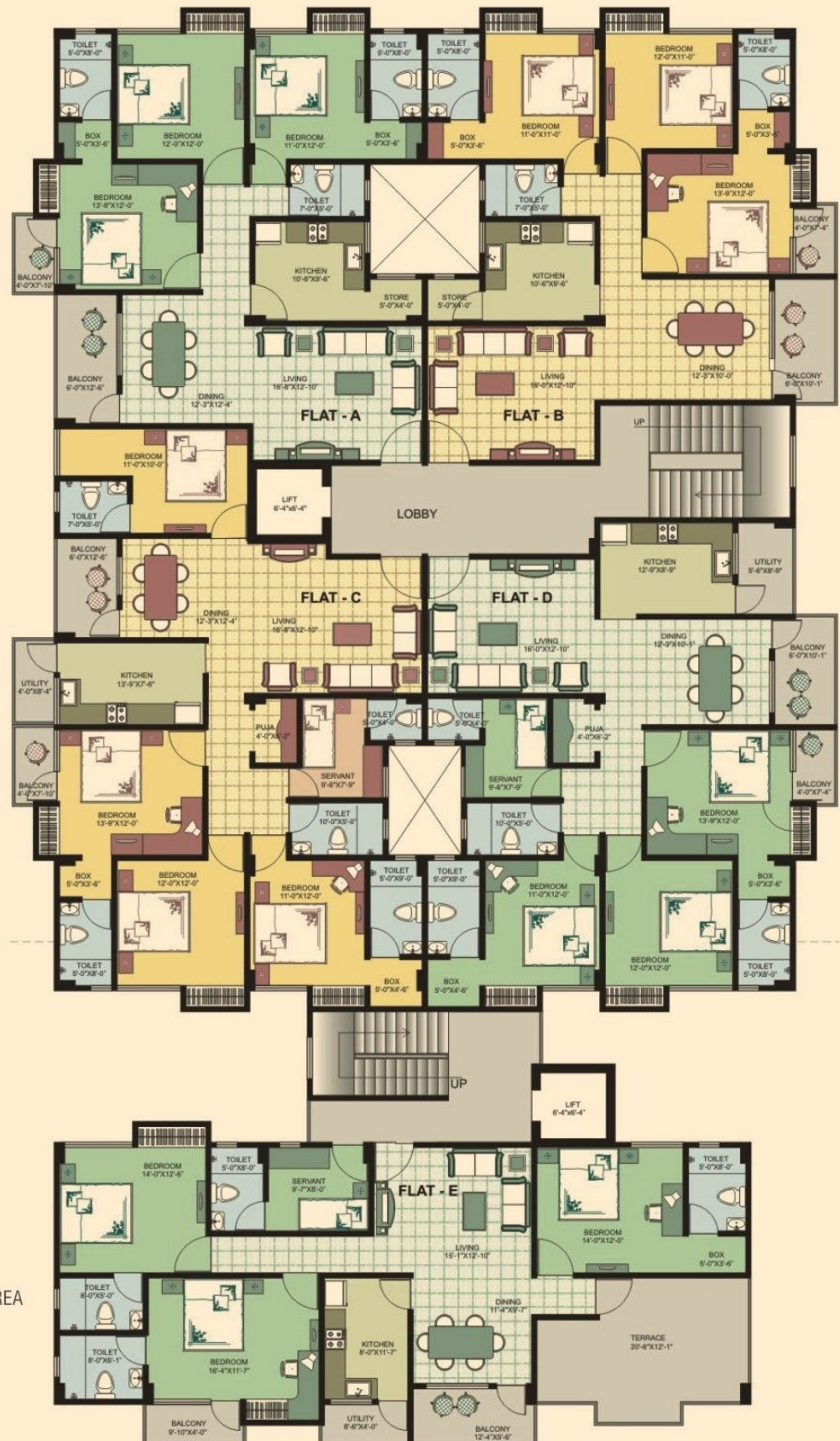
FIRST TO FIFTH FLOOR PLAN



BLOCK - B

FLAT	SUPER BUILT UP AREA
FLAT A	1691 SQ. FT.
FLAT B	1691 SQ. FT.
FLAT C	2148 SQ. FT.
FLAT D	1944 SQ. FT.
FLAT E	2195 SQ. FT.

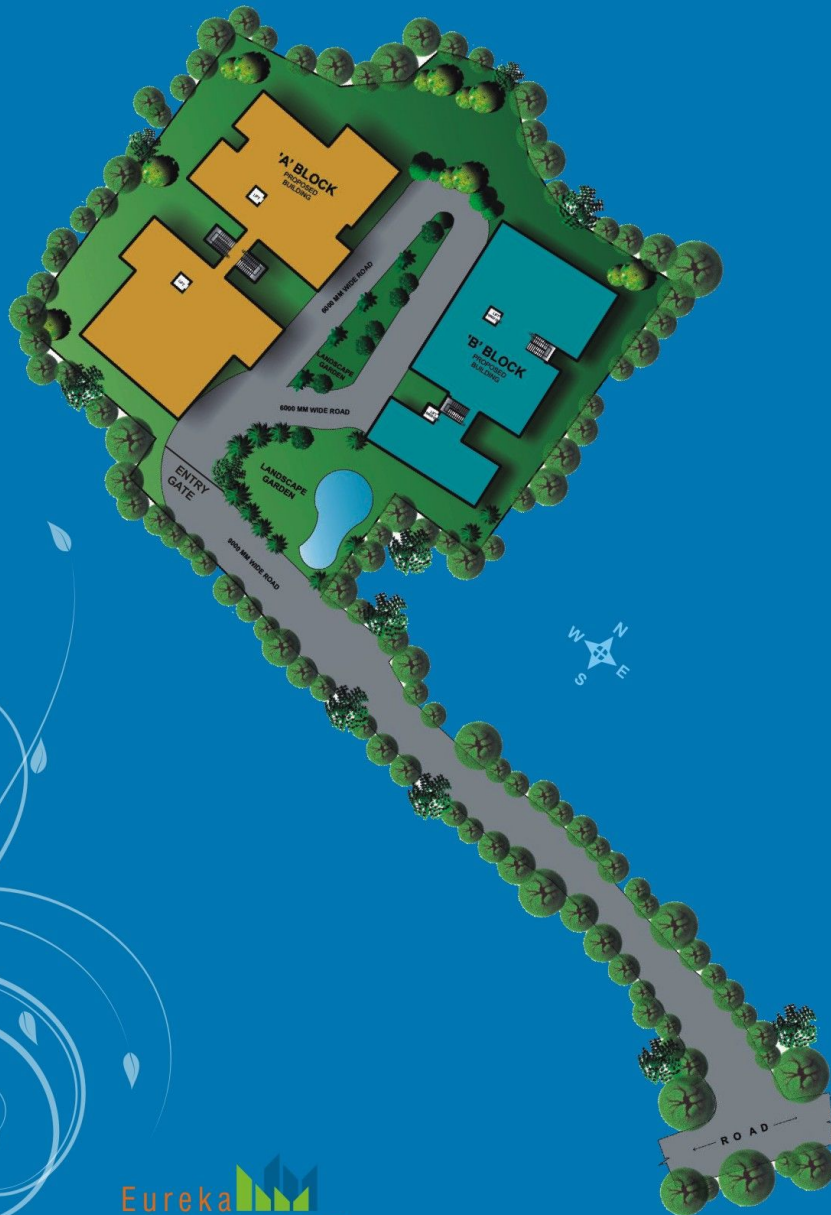
SIXTH FLOOR PLAN



BLOCK - B

FLAT	SUPER BUILT UP AREA
FLAT A	1691 SQ. FT.
FLAT B	1691 SQ. FT.
FLAT C	2148 SQ. FT.
FLAT D	1944 SQ. FT.
FLAT E	1917 SQ. FT. + 227 SQ. FT. TERRACE

SITE PLAN



Eureka
HEIGHTS

SPECIFICATIONS

FOUNDATION & SUPER STRUCTURE	:	RCC framed structure with Earthquake resistant specification
BRICK WORK	:	Equally thick Internal and Peripheral Walls of 115 mm
INTERNAL FINISH	:	Plaster of Paris
FLOORING	:	Vitrified tiles for all rooms/ drawing/ dining
TOILETS	:	Anti skid vitrified tiles on floors and exclusively designed ceramic walled tiles
KITCHEN	:	Anti skid vitrified tiles on floors with granite top counter; 2 ft. ceramic tiles above counter
DOORS & WINDOWS	:	Timber framed flush doors in all rooms, toilets and kitchen- Anodized powder coated aluminum window, designer wooden entrance door
SANITARY WARES & FITTING	:	Basin and water closets of reputed brands; CP fittings of ISI quality
ELECTRICALS	:	Adequate electrical points; intercom facilities - Regulated entry with intercom connection from entrance gate to each apartment - Fire resistant electrical wires with elegant modular switches
OTHER FACILITIES	:	Provision for SPLIT AC, Telephone, Intercom Facility, Internet Cabling, Lights, Fans and TV Points with adequate extra plug points
ELEVATOR	:	Lifts manufactured by Kone/ Otis/ equivalent makes
FIRE SAFETY	:	Equipped with fire alarm/fighting devices/extinguishers – A large fire extinguishing water reservoir
SECURITY FACILITIES	:	Due care has been taken to equip the building with modern day security equipment
GARDEN AMENITIES	:	Beautiful landscaped garden with swimming pool, etc.

*Architects and the Developer reserve the right to alter the specifications and facilities for design improvement.

SITE PLAN



SPECIFICATIONS

FOUNDATION & SUPER STRUCTURE	:	RCC framed structure with Earthquake resistant specification
BRICK WORK	:	Equally thick Internal and Peripheral Walls of 115 mm
INTERNAL FINISH	:	Plaster of Paris
FLOORING	:	Vitrified tiles for all rooms/ drawing/ dining
TOILETS	:	Anti skid vitrified tiles on floors and exclusively designed ceramic walled tiles
KITCHEN	:	Anti skid vitrified tiles on floors with granite top counter; 2 ft. ceramic tiles above counter
DOORS & WINDOWS	:	Timber framed flush doors in all rooms, toilets and kitchen- Anodized powder coated aluminum window, designer wooden entrance door
SANITARY WARES & FITTING	:	Basin and water closets of reputed brands; CP fittings of ISI quality
ELECTRICALS	:	Adequate electrical points; intercom facilities - Regulated entry with intercom connection from entrance gate to each apartment - Fire resistant electrical wires with elegant modular switches
OTHER FACILITIES	:	Provision for SPLIT AC, Telephone, Intercom Facility, Internet Cabling, Lights, Fans and TV Points with adequate extra plug points
ELEVATOR	:	Lifts manufactured by Kone/ Otis/ equivalent makes
FIRE SAFETY	:	Equipped with fire alarm/fighting devices/extinguishers – A large fire extinguishing water reservoir
SECURITY FACILITIES	:	Due care has been taken to equip the building with modern day security equipment
GARDEN AMENITIES	:	Beautiful landscaped garden with swimming pool, etc.

*Architects and the Developer reserve the right to alter the specifications and facilities for design improvement.

LOCATION MAP

not to scale



Eureka[®]
Developers Pvt. Ltd.

An ISO 9001:2008 certified company

EUREKA DEVELOPERS PVT. LTD.
Nabagraha Road, 2nd Byelane,
Silpukhuri, Guwahati - 781003

Tel: 0361-2661129
Cell: 9401833333, 9854014000
E-mail: eurekadevelopers@gmail.com

www.eurekadevelopers.com

ARCHITECT
BANKA & ASSOCIATES

STRUCTURAL ENGINEER
CADMETRIC CONSULTING

our bankers



This brochure is purely conceptual and not a legal offering. The developer reserves the right to amend / alter the area, layout, elevations, specifications and amenities. Elevations used in the brochure are purely Artistic Impressions and tend to change with / without prior notice.

SAGE DESIGNS - 98100 33807



Where life is always a new discovery