



LUXURY IN THE SKY



SKYVILLE




SOHNA ROAD, GURGAON



OWNING THE LIMITLESS SKY

ERA Landmarks introduces SkyVille, the first-of-its-kind high-rise luxury apartments in Gurgaon. Situated at the height of the blue skies, your prized habitat consists of every element of grandeur and magnificence to take your living to an unmatched level of opulence and indulgence.

The epitome of luxury living is embellished with a beautifully manicured sky garden and a lavish sky lounge*.







YOUR PRIVATE SPACE IN THE SKY

PREMIUM LIVING

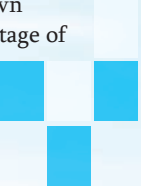
Rediscover yourself in the vastness of every individual unit, complete with large open spaces. Add to it a premium clubhouse with exclusive services. And if that's not all, experience sky lounges* at the top of every tower with a golf putting green*.

EXCLUSIVE PENTHOUSE

Each luxurious penthouse unit offers sweeping views, with expansive living spaces, terrace gardens/sit outs and an exclusive splash pool.

BEST OF BOTH WORLDS

Living here, you will have the privacy of your own villa, the lifestyle of a plush resort and the advantage of having neighbours of the same stature.





APARTMENT AMENITIES*

- Airy 3 / 4 side open units
- Exclusive terrace gardens
- Master bedroom with steam room & jacuzzi
- Provision for VRV air conditioning
- Pre-fitted plush modular kitchen

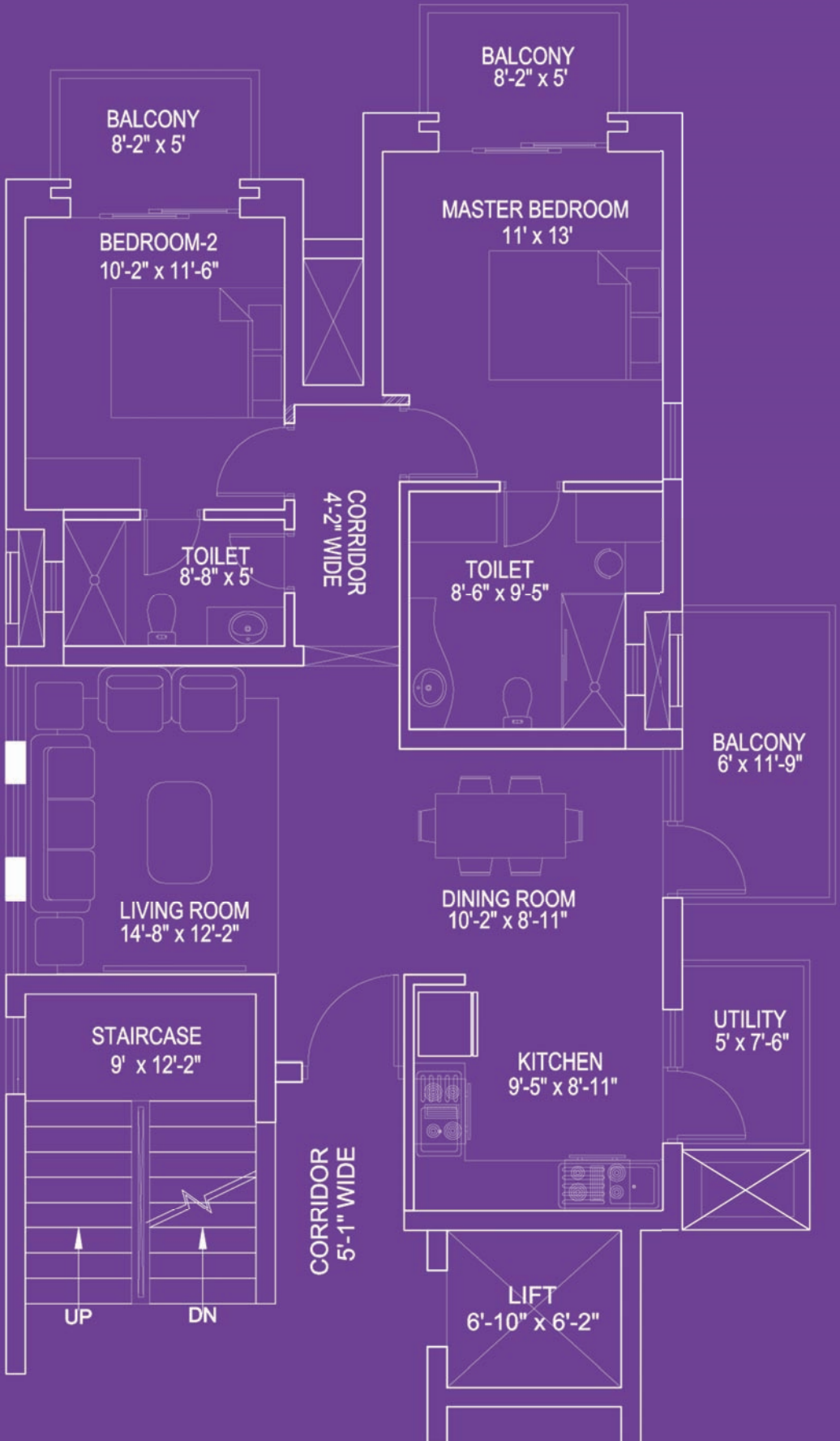


CLUB FACILITIES

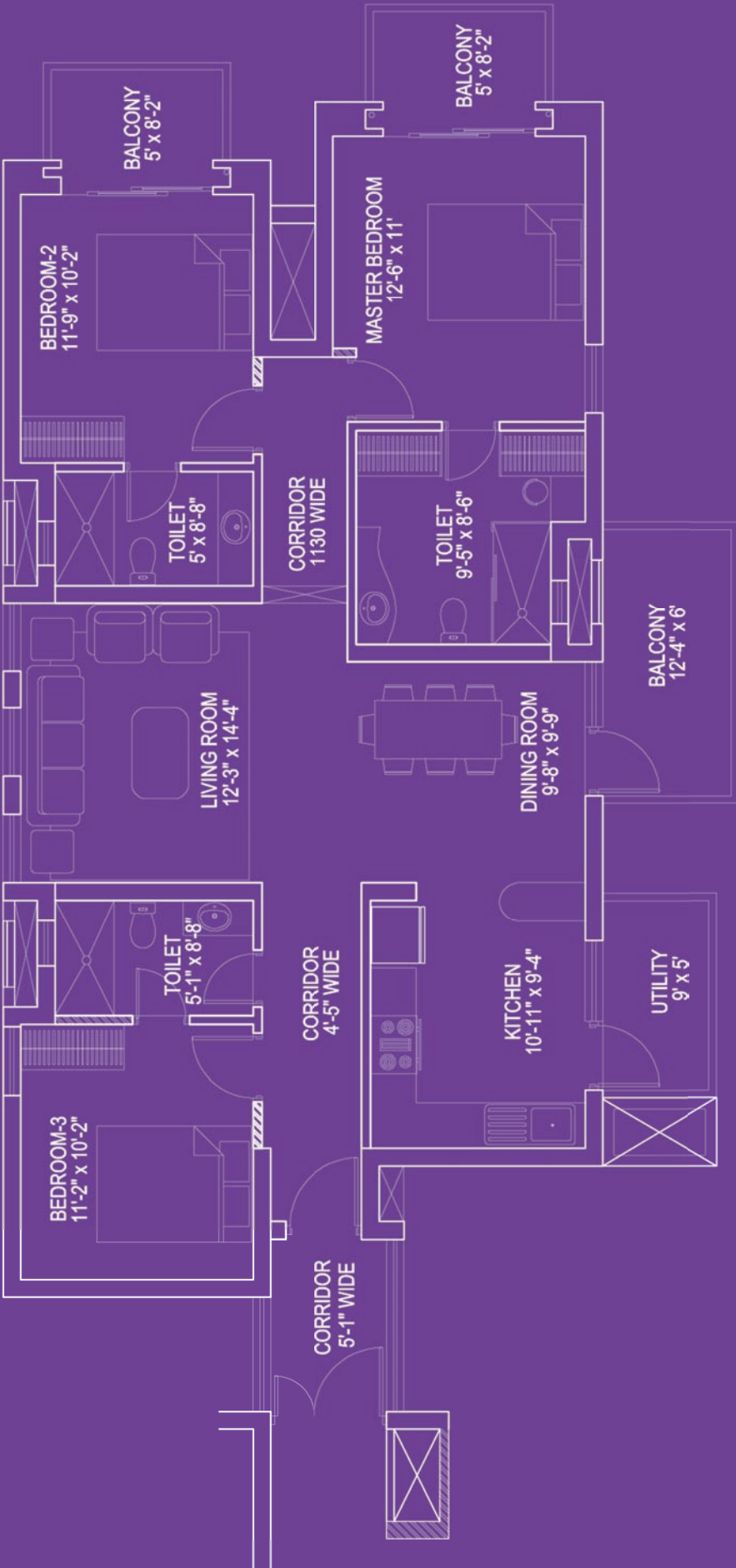
- State-of-the-art gym & spa
- Peaceful lounge areas for reading & relaxation
- Swimming pool
- Kids' fun zone with multimedia games and dance studio
- Sports facilities like badminton, tennis, squash, snooker and table tennis
- Coffee shop / multi-cuisine restaurant, bar, conference & party room



2 BHK Plan
Tentative Sale Area (1446 Sq. Ft.)



3 BHK Plan
Tentative Sale Area (1827 Sq. Ft.)





SKYVILLE - TENTATIVE SPECIFICATIONS

MAIN ENTRY	Hardwood frame / panelled wooden door
------------	---------------------------------------

LIVING / DINING

WALLS	Acrylic emulsion
-------	------------------

FLOOR	Imported marble
-------	-----------------

CEILING	Oil bound distemper
---------	---------------------

DOORS & WINDOWS	UPVC windows / Skin moulded doors
-----------------	-----------------------------------

ELECTRICAL	Modular switches & sockets, copper wiring & ceiling fans (fitting like light fixtures, geysers, appliances etc., not provided)
------------	---

MASTER BED ROOM

WALLS	Acrylic emulsion
-------	------------------

FLOOR	Laminated wooden flooring
-------	---------------------------

CEILING	Oil bound distemper
---------	---------------------

DOORS & WINDOWS	UPVC windows / Skin moulded door
-----------------	----------------------------------

ELECTRICAL	Modular switches & sockets, copper wiring & ceiling fan (fitting like light fixtures, geysers, appliances etc., not provided)
------------	--

BED ROOM

WALLS	Acrylic emulsion
-------	------------------

FLOOR	Vitrified tiles
-------	-----------------

CEILING	Oil bound distemper
---------	---------------------

DOORS & WINDOWS	UPVC windows / Skin moulded doors
-----------------	-----------------------------------

ELECTRICAL	Modular switches & sockets, copper wiring & ceiling fan (fitting like light fixtures, geysers, appliances etc., not provided)
------------	--

MASTER DRESS


WALLS	Acrylic emulsion
-------	------------------

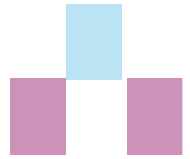
FLOOR	Vitrified tiles
-------	-----------------

CEILING	Oil bound distemper
---------	---------------------

DOORS & WINDOWS	UPVC windows / Skin moulded doors
-----------------	-----------------------------------

ELECTRICAL	Modular switches & sockets, copper wiring (fitting like fans, light fixtures, geysers, appliances etc., not provided)
------------	--





KITCHEN

KITCHEN	Modular
WALLS	2' High ceramic tiles dado above counter / 5' above floor level where no counter
FLOOR	Anti skid ceramic tiles
CEILING	Oil bound distemper
DOORS & WINDOWS	UPVC windows / Skin moulded door
ELECTRICAL	Modular switches & sockets, copper wiring (fitting like fans, light fixtures, geysers, appliances etc., not provided)
GEYSERS	Provision of hot & cold water system
OTHERS	Granite / Marble counter top with single bowl sink

BALCONIES / UTILITIES

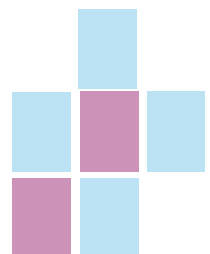
WALLS	Combination of permanent paint / Texture / ACP
FLOOR	Ceramic tiles
CEILING	Oil bound distemper
DOORS & WINDOWS	UPVC windows / Skin moulded door
ELECTRICAL	Modular switches & sockets, copper wiring (fitting like fans, light fixtures, geysers, appliances etc., not provided)

MASTER TOILET

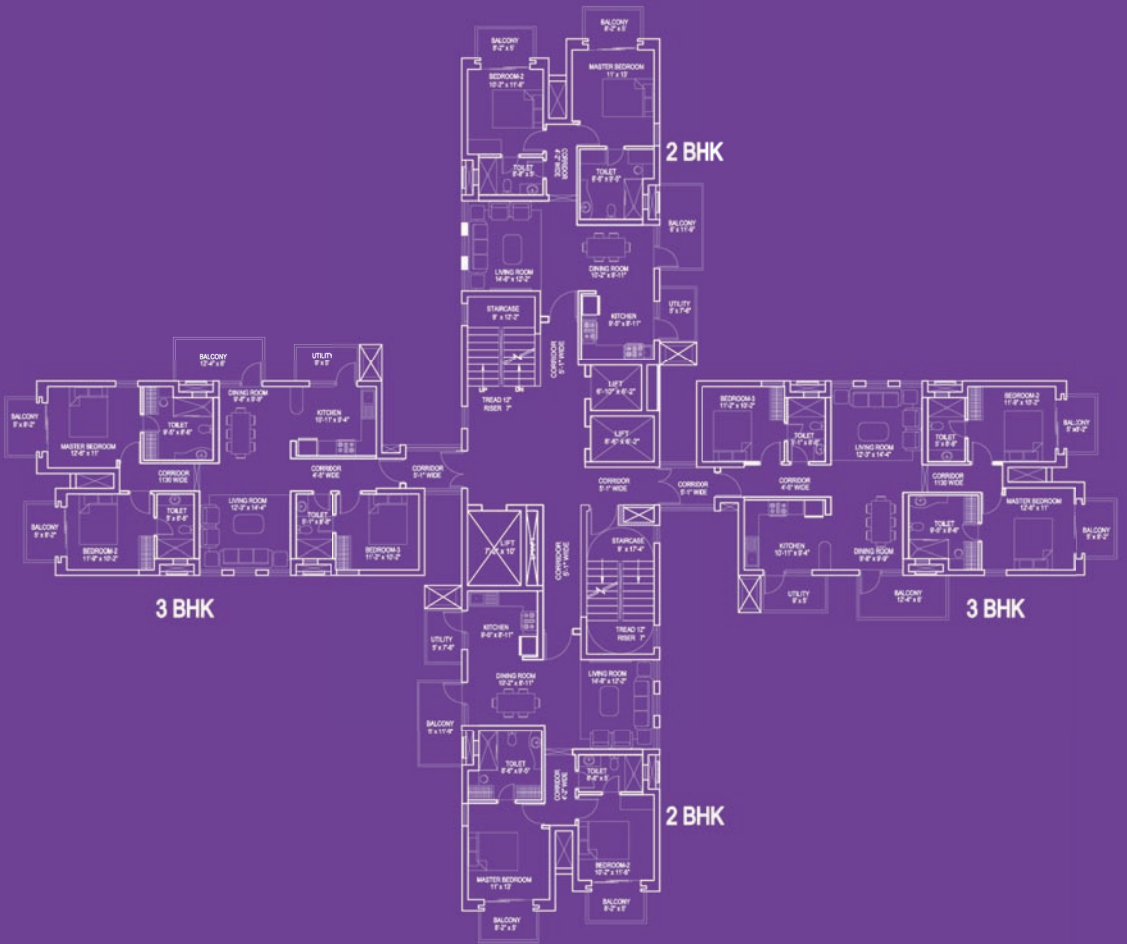
WALLS	Decorative ceramic tiles
FLOOR	Anti skid ceramic tiles
CEILING	Oil bound distemper
DOORS & WINDOWS	UPVC windows / Water proof flush door
ELECTRICAL	Modular switches & sockets, copper wiring & geyser (fitting like fans, light fixtures, appliances etc., not provided)

TOILET

WALLS	Decorative ceramic tiles
FLOOR	Anti skid ceramic tiles
CEILING	Oil bound distemper
DOORS & WINDOWS	UPVC windows / Water proof flush door
ELECTRICAL	Modular switches & sockets, copper wiring & geyser (fitting like fans, light fixtures, appliances etc., not provided)
OTHERS	Provision for VRV



TENTATIVE CLUSTER PLAN 2BHK & 3BHK

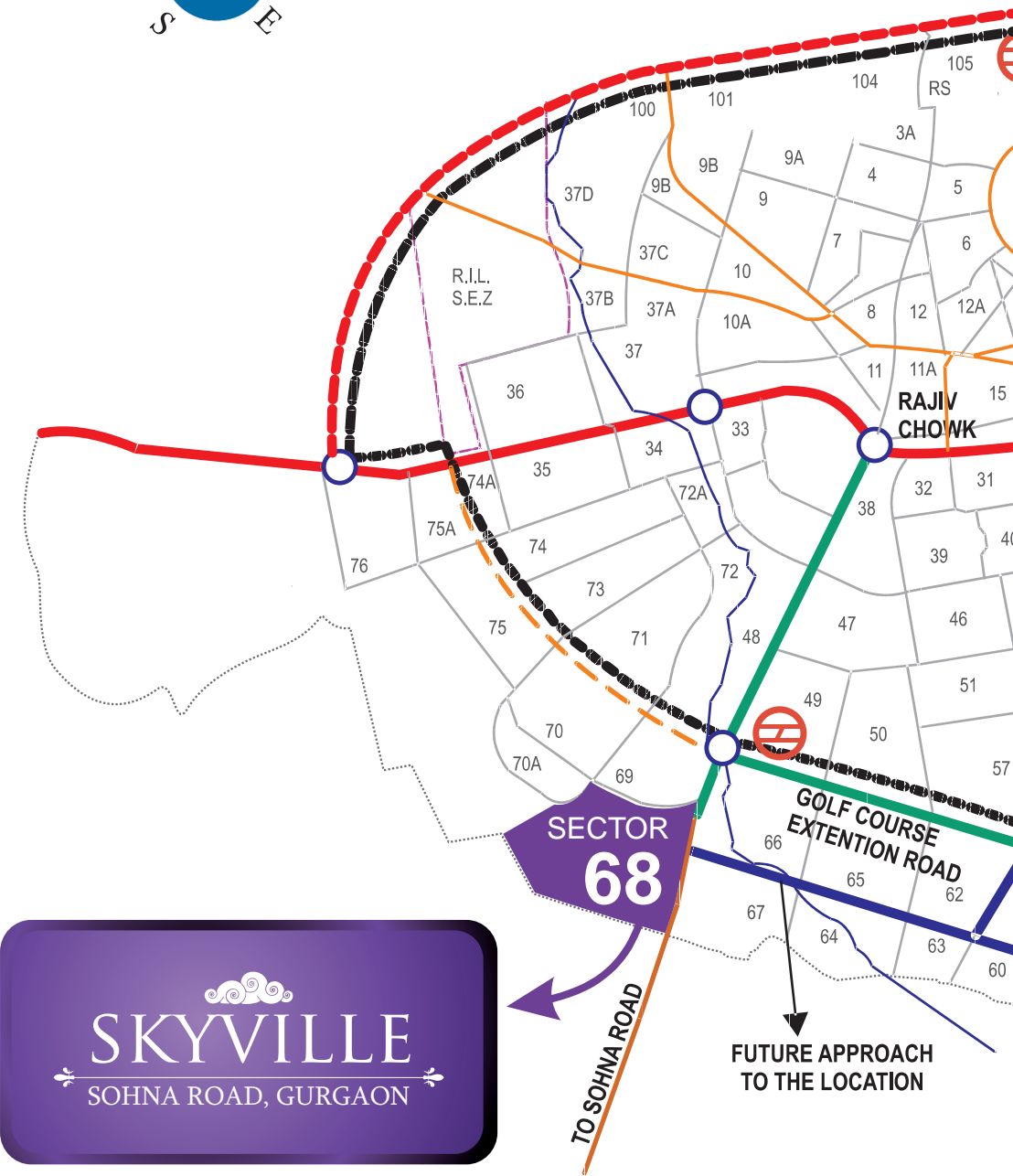


TENTATIVE CLUSTER PLAN
2BHK & 3BHK – A, B, C, D, E, F, G, J, K

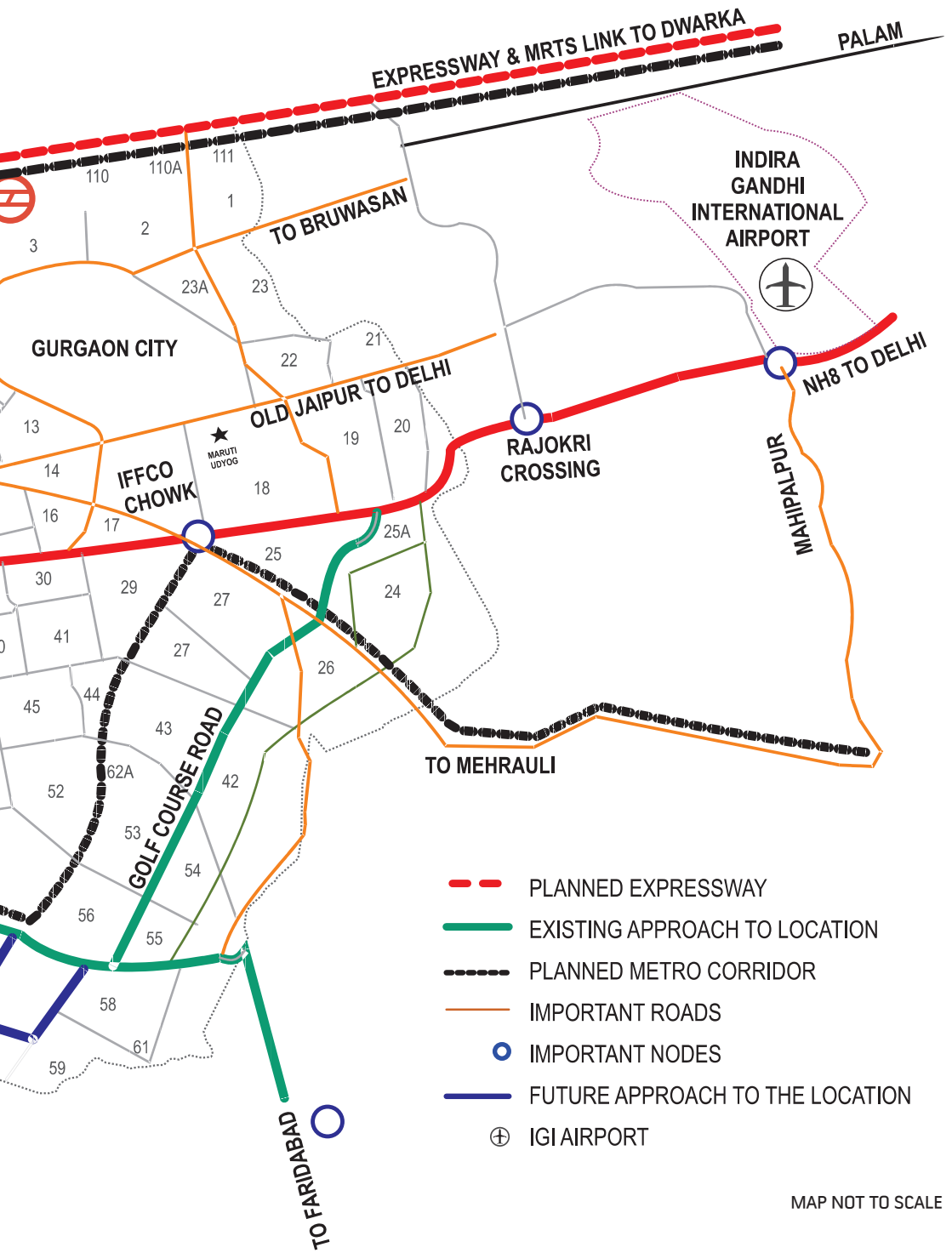
TENTATIVE CLUSTER PLAN
3BHK+ & 4BHK – L, M



LOCATION MAP




SKYVILLE
SOHNA ROAD, GURGAON



MAP NOT TO SCALE



Believe in difference


SKYVILLE
 
SOHNA ROAD, GURGAON

Site Office: Sector-68, Sohna Road, Gurgaon.

Head Office: B-24, Sector-3, Noida-201301, Ph: +91-120-4037000, Fax: +91-120-4037029.

E-mail: ladmarksales@eragroup.in, Website: www.skyville.co.in, www.eragroup.co.in.