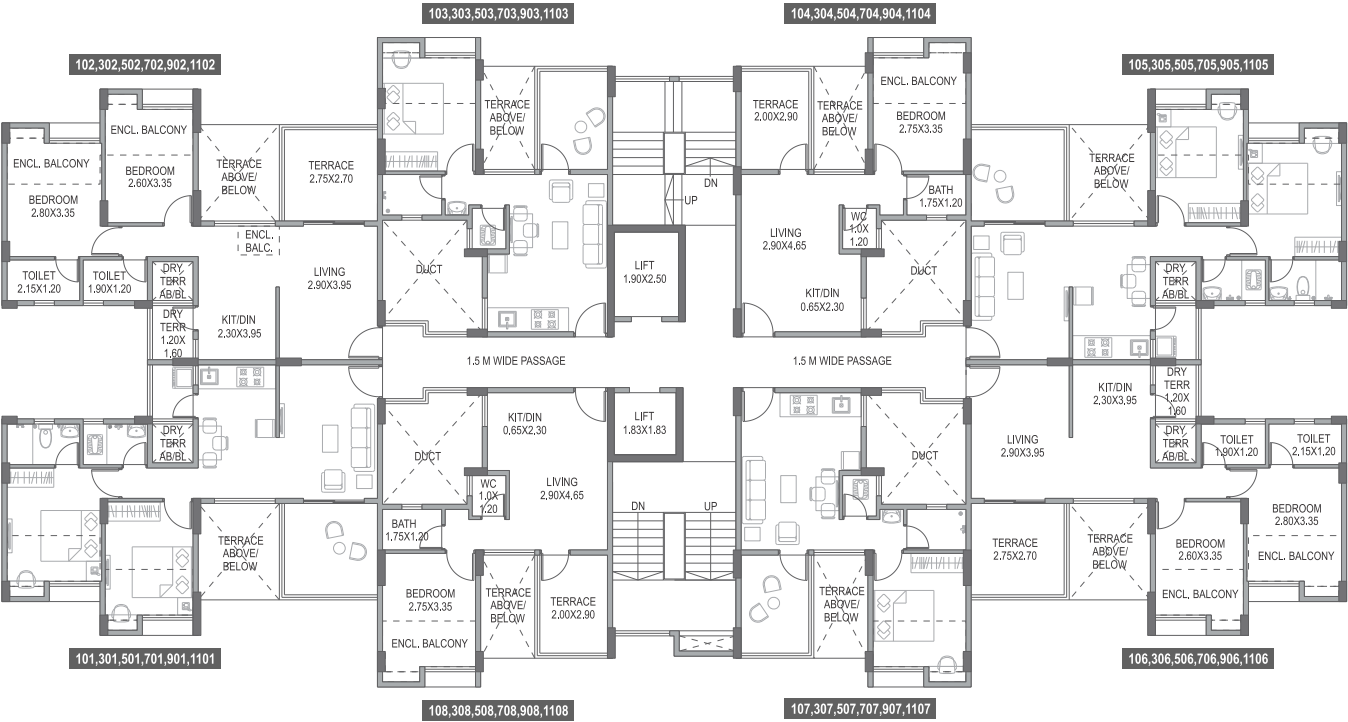


BUILDING - M

1st, 3rd, 5th, 7th, 9th & 11th FLOOR PLAN



AREA STATEMENT IN SQ.MT

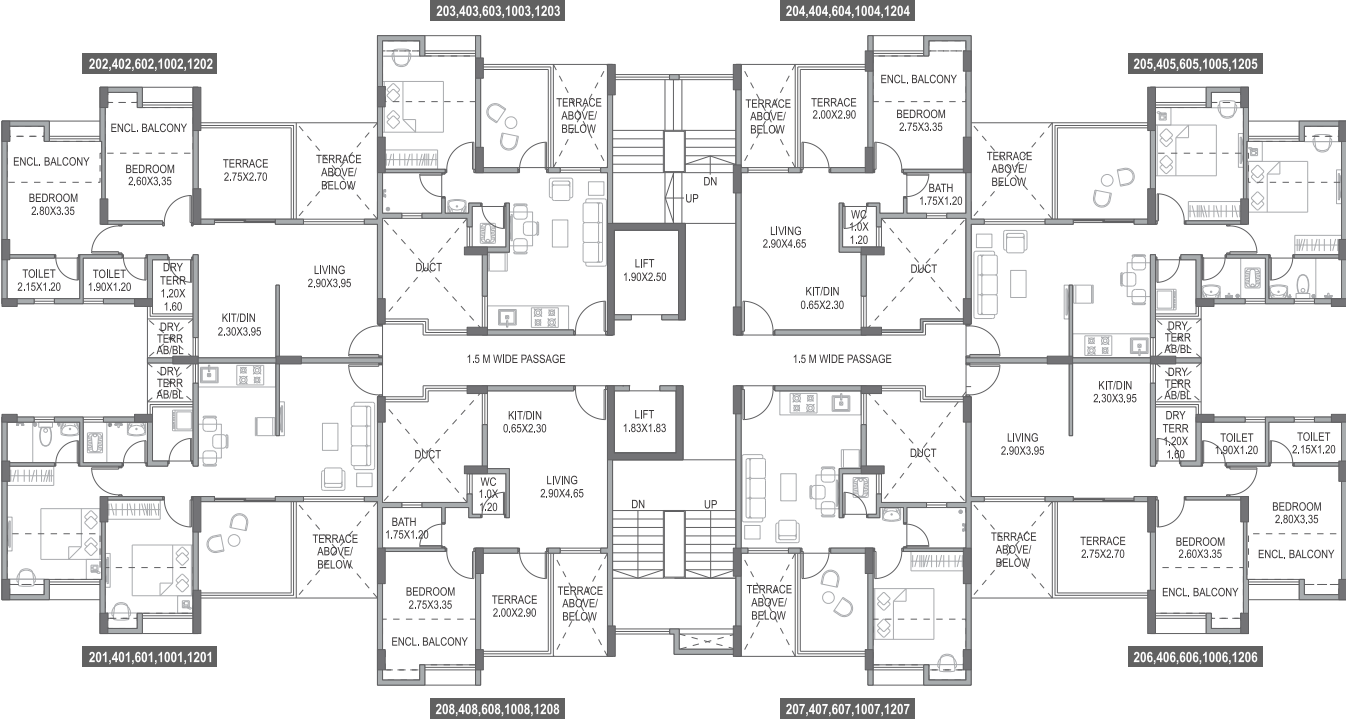
FLAT NO.	TYPE	CARPET AREA	ENCL. BALCONY AREA	CUPBOARD AREA	TERRACE CARPET AREA
101,501,701	2BHK	40.29	7.52	0.56	9.70
702	2BHK	39.62	8.18	0.56	9.70
304	1 BHK	26.51	3.88	0.33	5.94
106,906	2 BHK	40.29	7.52	0.57	9.70
107,307,507	1 BHK	26.52	3.83	0.33	5.94
708	1 BHK	26.52	3.83	0.33	5.94

FACTOR OF CONVERSION FROM SQ.M. TO SQ.FT. IS 10.764.

*NOTE: "carpet area" means the net usable floor area of an apartment, excluding the area covered by the external walls, areas under services shafts, exclusive balcony or verandah area and exclusive open terrace area, but includes the area covered by the internal partition walls of the apartment. Internal columns / shear walls embedded as a part of internal partition walls are included in carpet area.

BUILDING - M

2nd, 4th, 6th, 10th & 12th FLOOR PLAN



AREA STATEMENT IN SQ.MT

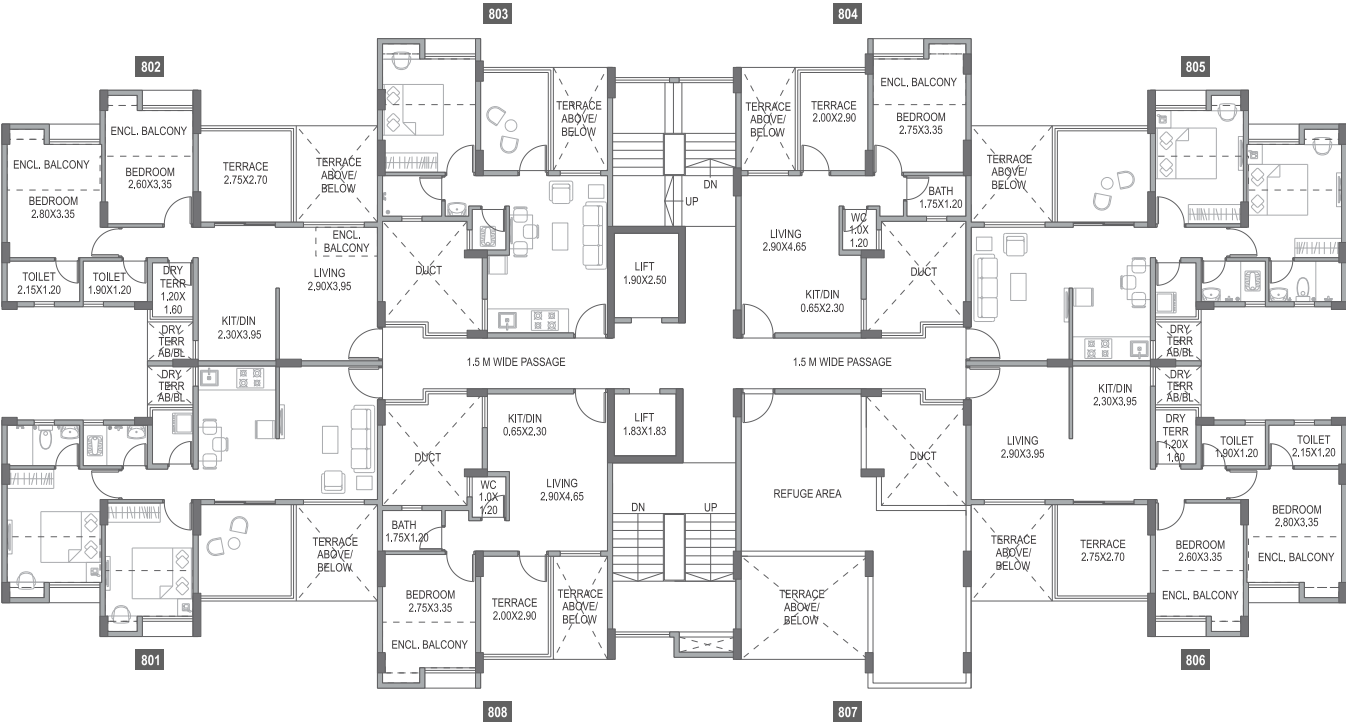
FLAT NO.	TYPE	CARPET AREA	ENCL. BALCONY AREA	CUPBOARD AREA	TERRACE CARPET AREA
201,401	2 BHK	40.29	7.52	0.57	9.66
402	2 BHK	40.66	7.14	0.57	9.66
1203	1 BHK	26.52	3.84	0.33	5.88
206,406,1006	2 BHK	40.29	7.52	0.57	9.66
1207	1 BHK	26.52	3.83	0.33	5.88
1208	1 BHK	26.52	3.83	0.33	5.88

FACTOR OF CONVERSION FROM SQ.M. TO SQ.FT. IS 10.764.

*NOTE: "carpet area" means the net usable floor area of an apartment, excluding the area covered by the external walls, areas under services shafts, exclusive balcony or verandah area and exclusive open terrace area, but includes the area covered by the internal partition walls of the apartment. Internal columns / shear walls embedded as a part of internal partition walls are included in carpet area.

BUILDING - M

8th FLOOR PLAN



AREA STATEMENT IN SQ.MT

FLAT NO.	TYPE	CARPET AREA	ENCL. BALCONY AREA	CUPBOARD AREA	TERRACE CARPET AREA
801	2 BHK	40.29	7.52	0.57	9.66
807	REFUGE AREA				
808	1 BHK	26.52	3.83	0.33	5.88

FACTOR OF CONVERSION FROM SQ.M. TO SQ.FT. IS 10.764.

*NOTE: "carpet area" means the net usable floor area of an apartment, excluding the area covered by the external walls, areas under services shafts, exclusive balcony or verandah area and exclusive open terrace area, but includes the area covered by the internal partition walls of the apartment. Internal columns / shear walls embedded as a part of internal partition walls are included in carpet area.