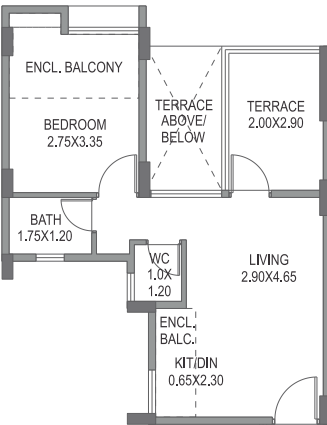


BUILDING - H

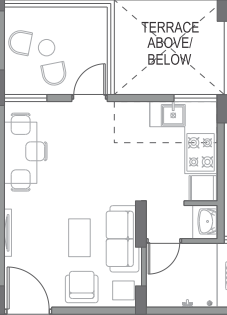
1st, 3rd, 5th, 7th, 9th & 11th FLOOR PLAN



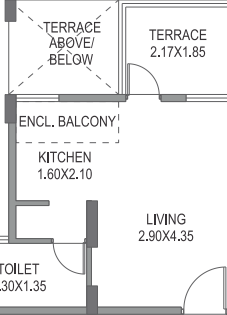
107,307,507,707,907,1107



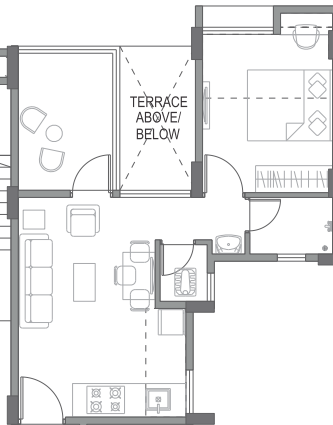
108,308,508,708,908,1108



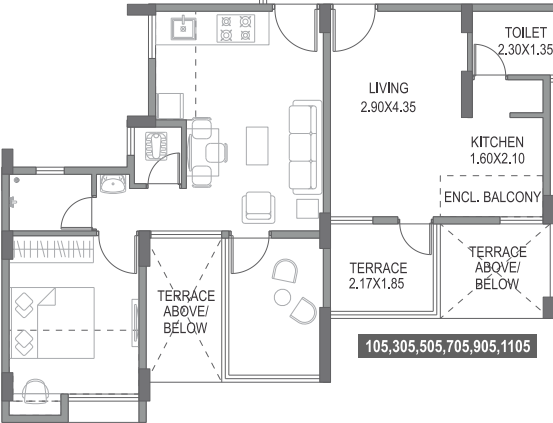
101,301,501,701,901,1101



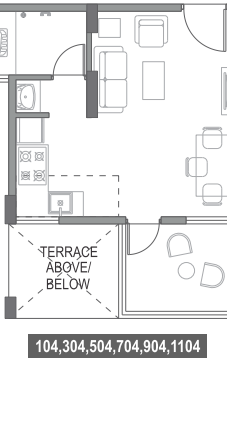
102,302,502,702,902,1102



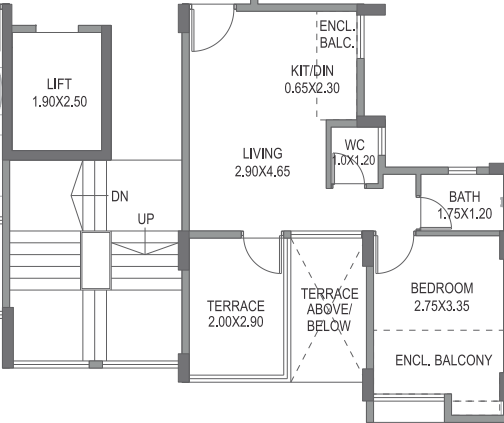
1.5 M WIDE PASSAGE



105,305,505,705,905,1105



104,304,504,704,904,1104



103,303,503,703,903,1103

106,306,506,706,906,1106

AREA STATEMENT IN SQ.MT

FLAT NO.	TYPE	CARPET AREA	ENCL. BALCONY AREA	CUPBOARD AREA	TERRACE CARPET AREA
301,901,1101	1 HK	18.91	1.89	0.00	4.14
102,302,902	1 BHK	24.60	5.79	0.33	5.93
103,503,703,903	1 BHK	24.60	5.79	0.33	5.93
304,704,904	1 HK	18.91	1.89	0.00	4.14
305,705,905	1 HK	18.91	1.89	0.00	4.14
306,706,1106	1 BHK	24.53	5.78	0.33	5.80
107,1107	1 BHK	24.53	5.78	0.33	5.80
508	1 HK	18.91	1.89	0.00	4.14

FACTOR OF CONVERSION FROM SQ.M. TO SQ.FT. IS 10.764.

*NOTE: "carpet area" means the net usable floor area of an apartment, excluding the area covered by the external walls, areas under services shafts, exclusive balcony or verandah area and exclusive open terrace area, but includes the area covered by the internal partition walls of the apartment. Internal columns / shear walls embedded as a part of internal partition walls are included in carpet area.

BUILDING - H

2nd, 4th, 6th, 10th & 12th FLOOR PLAN



AREA STATEMENT IN SQ.MT

FLAT NO.	TYPE	CARPET AREA	ENCL. BALCONY AREA	CUPBOARD AREA	TERRACE CARPET AREA
601,1201	1 HK	18.79	2.02	0.00	4.14
402,1002,1202	1 BHK	24.60	5.79	0.33	5.90
1003,1203	1 BHK	24.60	5.79	0.33	5.90
604,1004	1 HK	18.79	2.02	0.00	4.14
1206	1 BHK	24.53	5.78	0.33	5.88
407,607,1007,1207	1 BHK	24.53	5.78	0.33	5.88
608,1008,1208	1 HK	18.78	2.02	0.00	4.14

FACTOR OF CONVERSION FROM SQ.M. TO SQ.FT. IS 10.764.

*NOTE: "carpet area" means the net usable floor area of an apartment, excluding the area covered by the external walls, areas under services shafts, exclusive balcony or verandah area and exclusive open terrace area, but includes the area covered by the internal partition walls of the apartment. Internal columns / shear walls embedded as a part of internal partition walls are included in carpet area.

BUILDING - H

8th FLOOR PLAN



AREA STATEMENT IN SQ.MT

FLAT NO.	TYPE	CARPET AREA	ENCL. BALCONY AREA	CUPBOARD AREA	TERRACE CARPET AREA
801	1 HK	18.79	2.02	0.00	4.14
803	1 BHK	24.60	5.79	0.33	5.90
805	1 HK	18.79	2.02	0.00	4.14
808	REFUGE AREA				

FACTOR OF CONVERSION FROM SQ.M. TO SQ.FT. IS 10.764.

*NOTE: "carpet area" means the net usable floor area of an apartment, excluding the area covered by the external walls, areas under services shafts, exclusive balcony or verandah area and exclusive open terrace area, but includes the area covered by the internal partition walls of the apartment.
Internal columns / shear walls embedded as a part of internal partition walls are included in carpet area.