

BUILDING - G

1st FLOOR PLAN



AREA STATEMENT IN SQ.MT

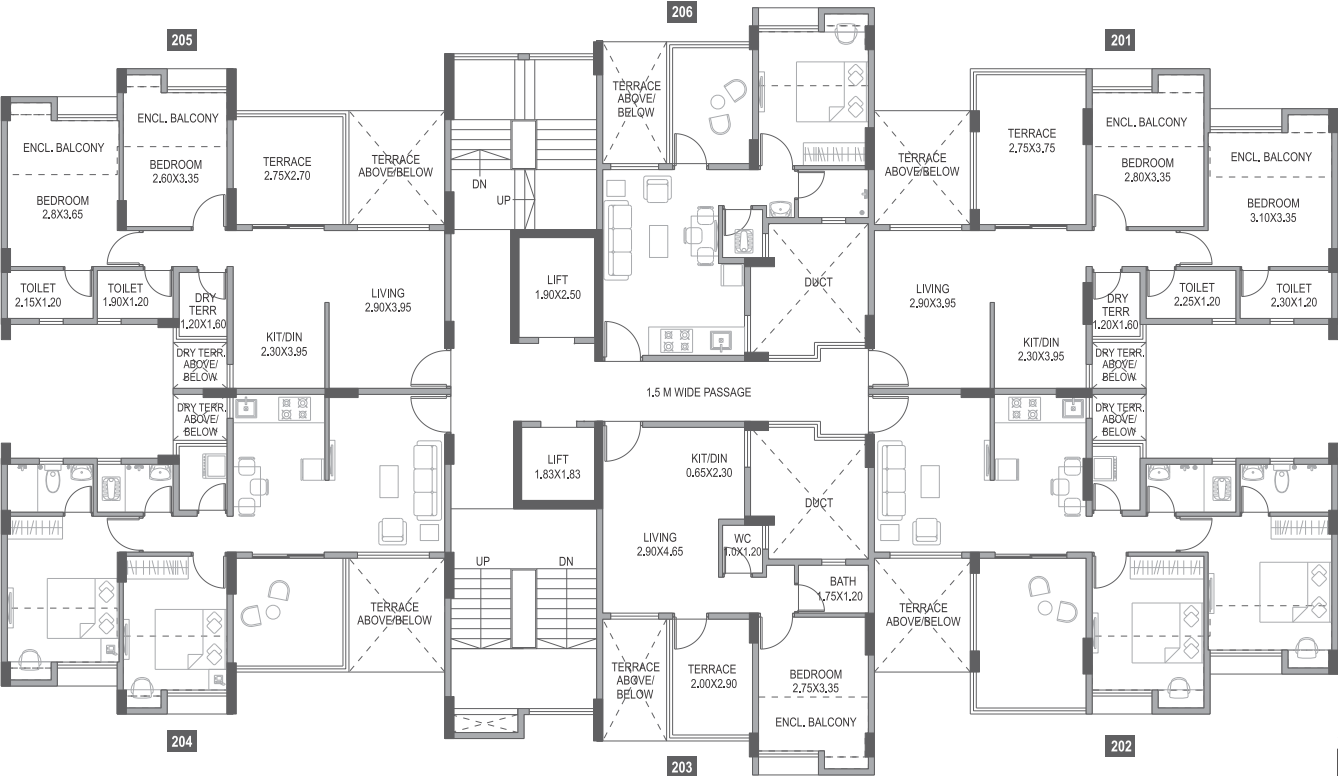
FLAT NO.	TYPE	CARPET AREA	ENCL. BALCONY AREA	CUPBOARD AREA	TERRACE CARPET AREA
101	1 BHK	26.73	3.76	0.33	6.75
102	1 BHK	26.61	3.76	0.33	6.75
103	1 BHK	26.52	3.83	0.33	5.94
104	2 BHK	40.00	8.60	0.57	9.73

FACTOR OF CONVERSION FROM SQ.M. TO SQ.FT. IS 10.764.

\*NOTE: "carpet area" means the net usable floor area of an apartment, excluding the area covered by the external walls, areas under services shafts, exclusive balcony or verandah area and exclusive open terrace area, but includes the area covered by the internal partition walls of the apartment. Internal columns / shear walls embedded as a part of internal partition walls are included in carpet area.

# BUILDING - G

## 2nd FLOOR PLAN



AREA STATEMENT IN SQ.MT

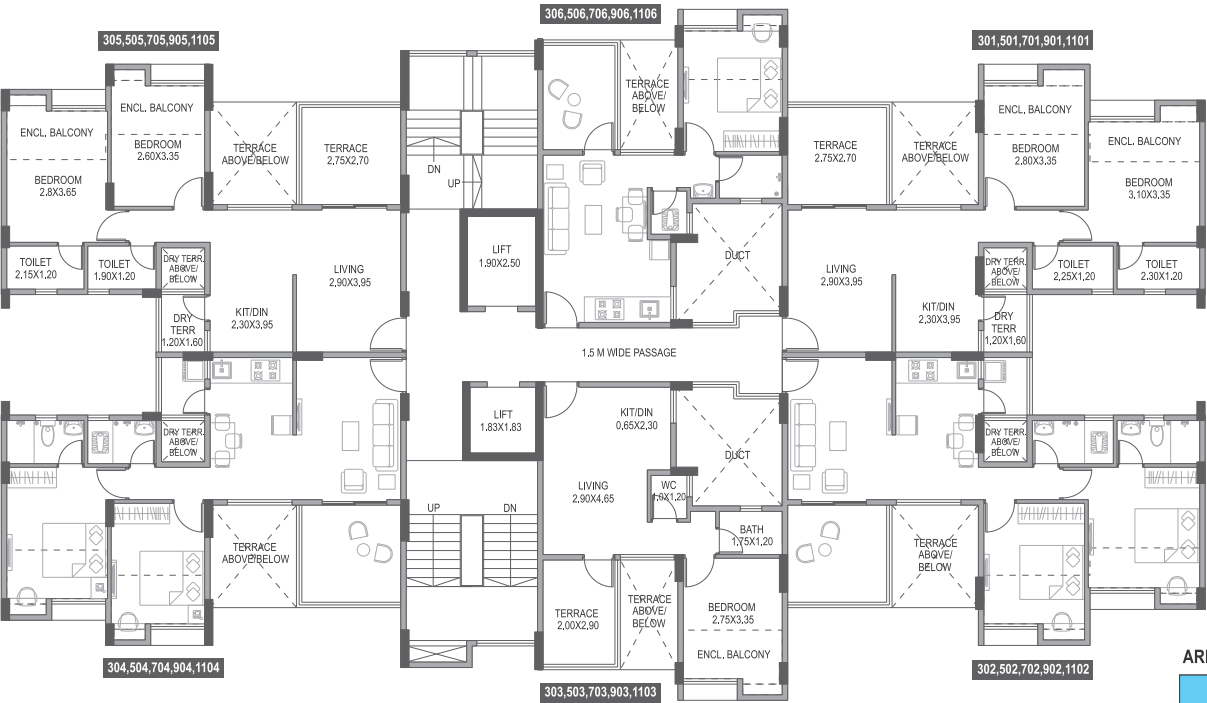
FLAT NO.	TYPE	CARPET AREA	ENCL. BALCONY AREA	CUPBOARD AREA	TERRACE CARPET AREA
201	2 BHK	42.81	7.51	0.65	12.47
202	2 BHK	42.69	7.51	0.65	12.47
205	2 BHK	41.14	7.54	0.57	9.65
206	1 BHK	26.52	3.83	0.33	5.88

FACTOR OF CONVERSION FROM SQ.M. TO SQ.FT. IS 10.764.

\*NOTE: "carpet area" means the net usable floor area of an apartment, excluding the area covered by the external walls, areas under services shafts, exclusive balcony or verandah area and exclusive open terrace area, but includes the area covered by the internal partition walls of the apartment.  
Internal columns / shear walls embedded as a part of internal partition walls are included in carpet area.

# BUILDING - G

3rd, 5th, 7th, 9th & 11th FLOOR PLAN



AREA STATEMENT IN SQ.MT

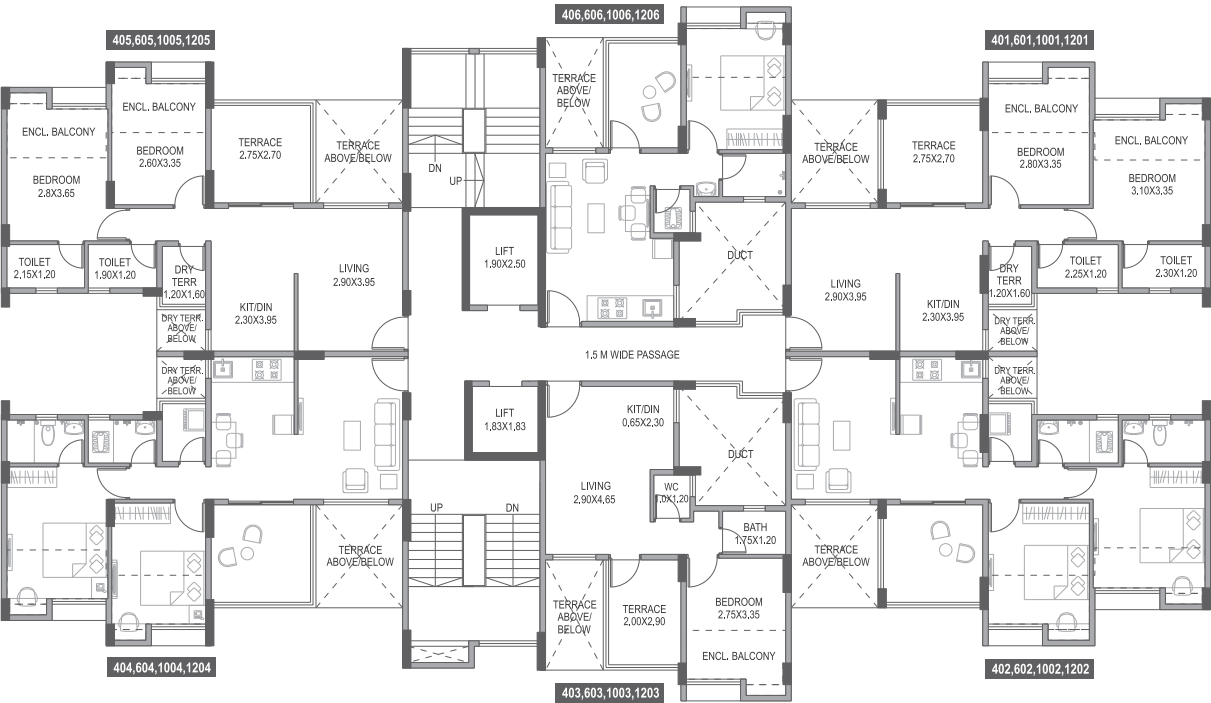
FLAT NO.	TYPE	CARPET AREA	ENCL. BALCONY AREA	CUPBOARD AREA	TERRACE CARPET AREA
301, 501, 701, 901	2 BHK	42.82	7.51	0.65	9.55
302	2 BHK	42.69	7.51	0.65	9.55
303, 503, 703, 903, 1103	1 BHK	26.52	3.83	0.33	5.94
504, 704	2 BHK	41.07	7.54	0.57	9.73
305, 905	2 BHK	41.14	7.54	0.57	9.73
706	1 BHK	26.52	3.83	0.33	5.94

FACTOR OF CONVERSION FROM SQ.M. TO SQ.FT. IS 10.764.

\*NOTE: "carpet area" means the net usable floor area of an apartment, excluding the area covered by the external walls, areas under services shafts, exclusive balcony or verandah area and exclusive open terrace area, but includes the area covered by the internal partition walls of the apartment.  
Internal columns / shear walls embedded as a part of internal partition walls are included in carpet area.

# BUILDING - G

4th, 6th, 10th & 12th FLOOR PLAN



AREA STATEMENT IN SQ.MT

FLAT NO.	TYPE	CARPET AREA	ENCL. BALCONY AREA	CUPBOARD AREA	TERRACE CARPET AREA
1201	2 BHK	42.81	7.51	0.65	9.61
1202	2 BHK	42.69	7.51	0.65	9.61
603, 1003, 1203	1 BHK	26.52	3.83	0.33	5.88
1204	2 BHK	41.07	7.54	0.57	9.65
1005, 1205	2 BHK	41.14	7.54	0.57	9.65
606, 1206	1 BHK	26.52	3.83	0.33	5.88

FACTOR OF CONVERSION FROM SQ.M. TO SQ.FT. IS 10.764.

\*NOTE: "carpet area" means the net usable floor area of an apartment, excluding the area covered by the external walls, areas under services shafts, exclusive balcony or verandah area and exclusive open terrace area, but includes the area covered by the internal partition walls of the apartment.  
Internal columns / shear walls embedded as a part of internal partition walls are included in carpet area.

BUILDING - G

8th FLOOR PLAN



AREA STATEMENT IN SQ.MT

FLAT NO.	TYPE	CARPET AREA	ENCL. BALCONY AREA	CUPBOARD AREA	TERRACE CARPET AREA
805	2 BHK	41.14	7.54	0.57	9.65
806	1 BHK	26.52	3.83	0.33	5.88

FACTOR OF CONVERSION FROM SQ.M. TO SQ.FT. IS 10.764.

\*NOTE: "carpet area" means the net usable floor area of an apartment, excluding the area covered by the external walls, areas under services shafts, exclusive balcony or verandah area and exclusive open terrace area, but includes the area covered by the internal partition walls of the apartment.  
Internal columns / shear walls embedded as a part of internal partition walls are included in carpet area.