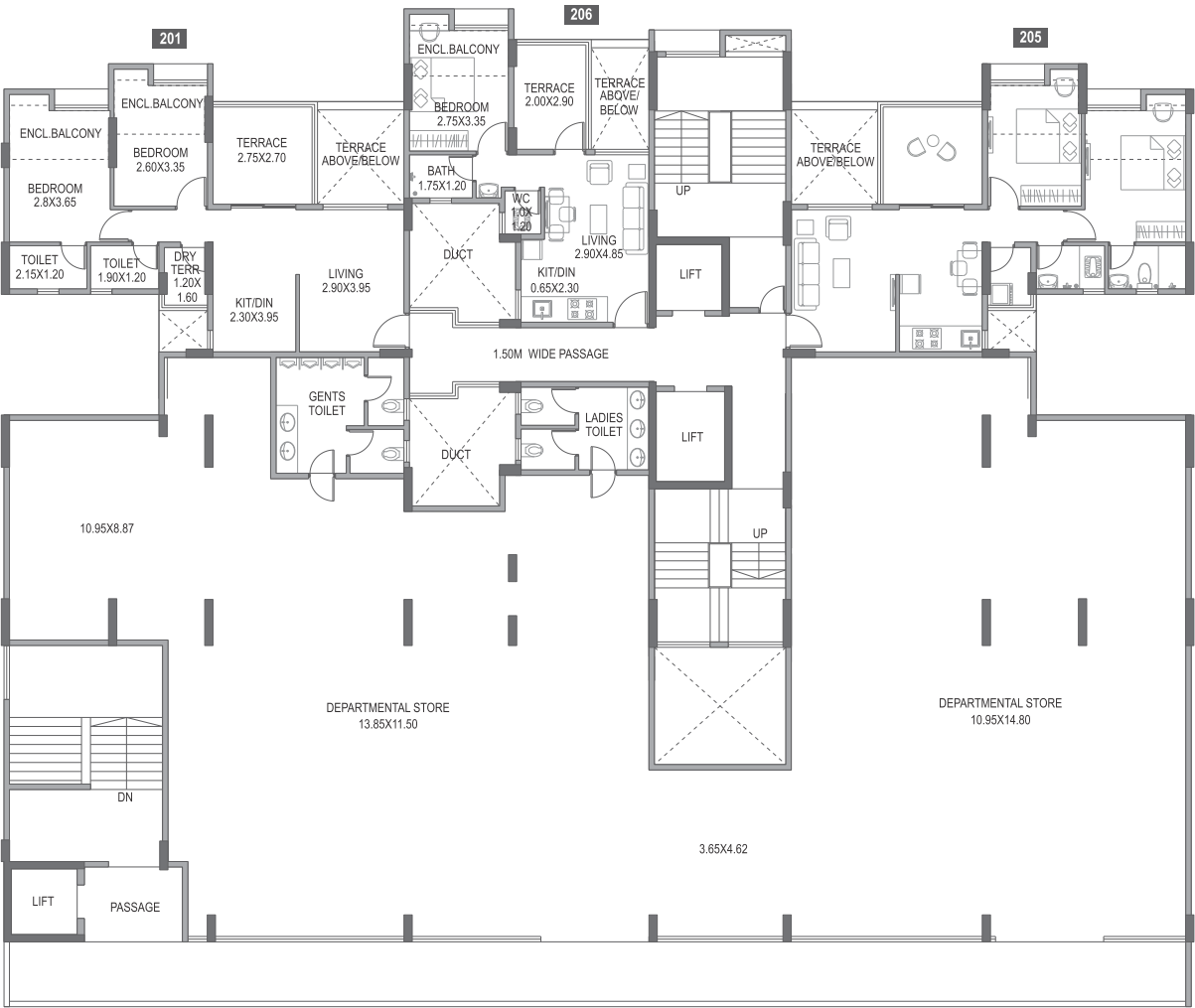


BUILDING - A

2nd FLOOR PLAN



AREA STATEMENT IN SQ.MT

FLAT NO.	TYPE	CARPET AREA	ENCL. BALCONY AREA	CUPBOARD AREA	TERRACE CARPET AREA
201	2 BHK	41.14	7.54	0.62	9.58
205	2 BHK	41.14	7.49	0.56	9.58

FACTOR OF CONVERSION FROM SQ.M. TO SQ.FT. IS 10.764.

*NOTE: "carpet area" means the net usable floor area of an apartment, excluding the area covered by the external walls, areas under services shafts, exclusive balcony or verandah area and exclusive open terrace area, but includes the area covered by the internal partition walls of the apartment. Internal columns / shear walls embedded as a part of internal partition walls are included in carpet area.

BUILDING - A

4TH FLOOR PLAN



AREA STATEMENT IN SQ.MT

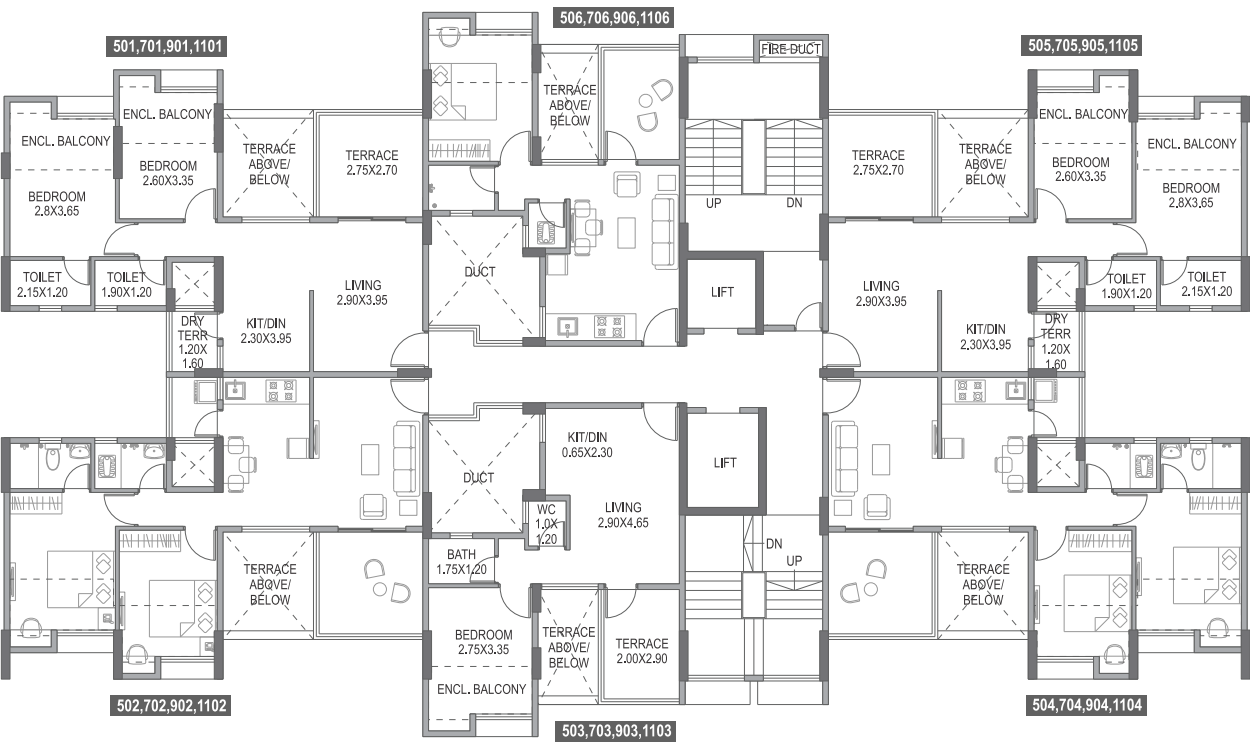
FLAT NO.	TYPE	CARPET AREA	ENCL. BALCONY AREA	CUPBOARD AREA	TERRACE CARPET AREA
403	1 BHK	26.77	3.60	0.33	5.82
406	1 BHK	26.77	3.60	0.33	5.82

FACTOR OF CONVERSION FROM SQ.M. TO SQ.FT. IS 10.764.

*NOTE: "carpet area" means the net usable floor area of an apartment, excluding the area covered by the external walls, areas under services shafts, exclusive balcony or verandah area and exclusive open terrace area, but includes the area covered by the internal partition walls of the apartment.
Internal columns / shear walls embedded as a part of internal partition walls are included in carpet area.

BUILDING - A

5th, 7th, 9th, & 11th FLOOR PLAN



AREA STATEMENT IN SQ.MT

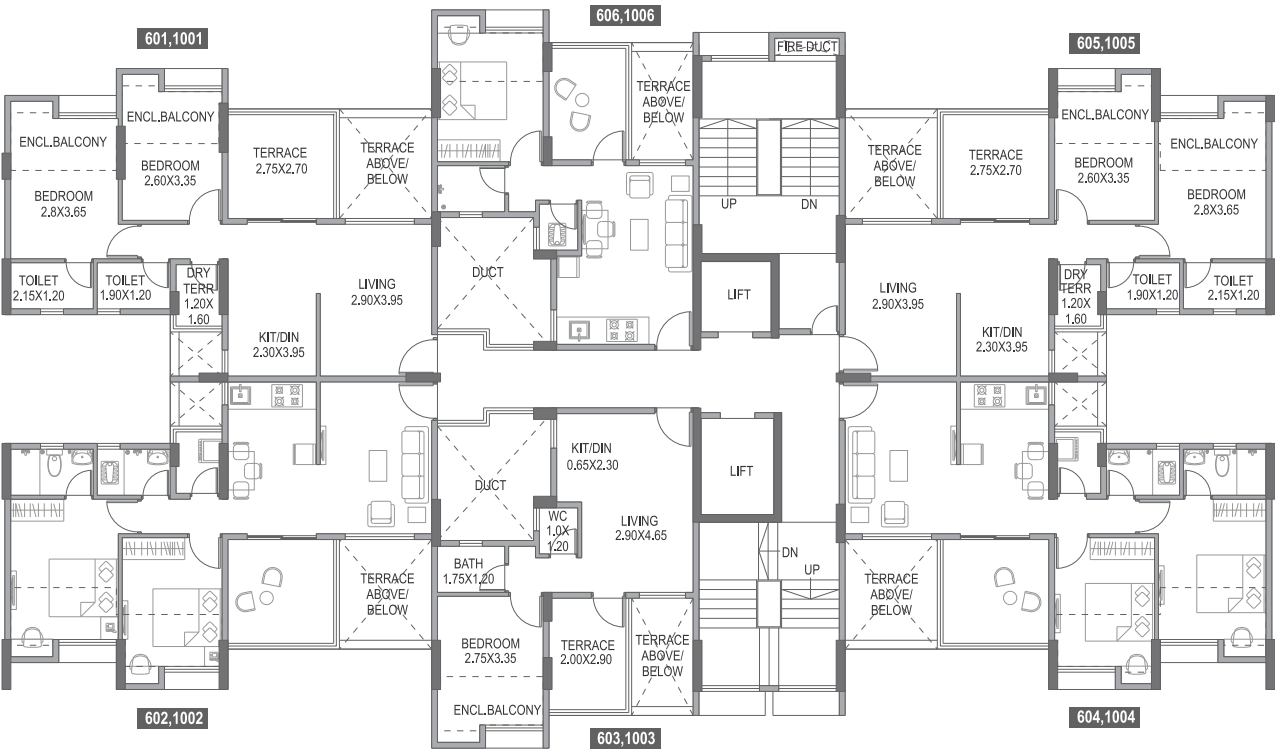
FLAT NO.	TYPE	CARPET AREA	ENCL. BALCONY AREA	CUPBOARD AREA	TERRACE CARPET AREA
501,1101	2 BHK	41.14	7.54	0.62	9.68
502	2 BHK	41.19	7.54	0.59	9.72
503,903	1 BHK	26.77	3.60	0.33	5.94
1104	2 BHK	41.14	7.49	0.56	9.73
505,905,1105	2 BHK	41.14	7.49	0.56	9.68
1106	1 BHK	26.77	3.60	0.33	5.94

FACTOR OF CONVERSION FROM SQ.M. TO SQ.FT. IS 10.764.

*NOTE: "carpet area" means the net usable floor area of an apartment, excluding the area covered by the external walls, areas under services shafts, exclusive balcony or verandah area and exclusive open terrace area, but includes the area covered by the internal partition walls of the apartment.
Internal columns / shear walls embedded as a part of internal partition walls are included in carpet area.

BUILDING - A

6th & 10th FLOOR PLAN



AREA STATEMENT IN SQ.MT

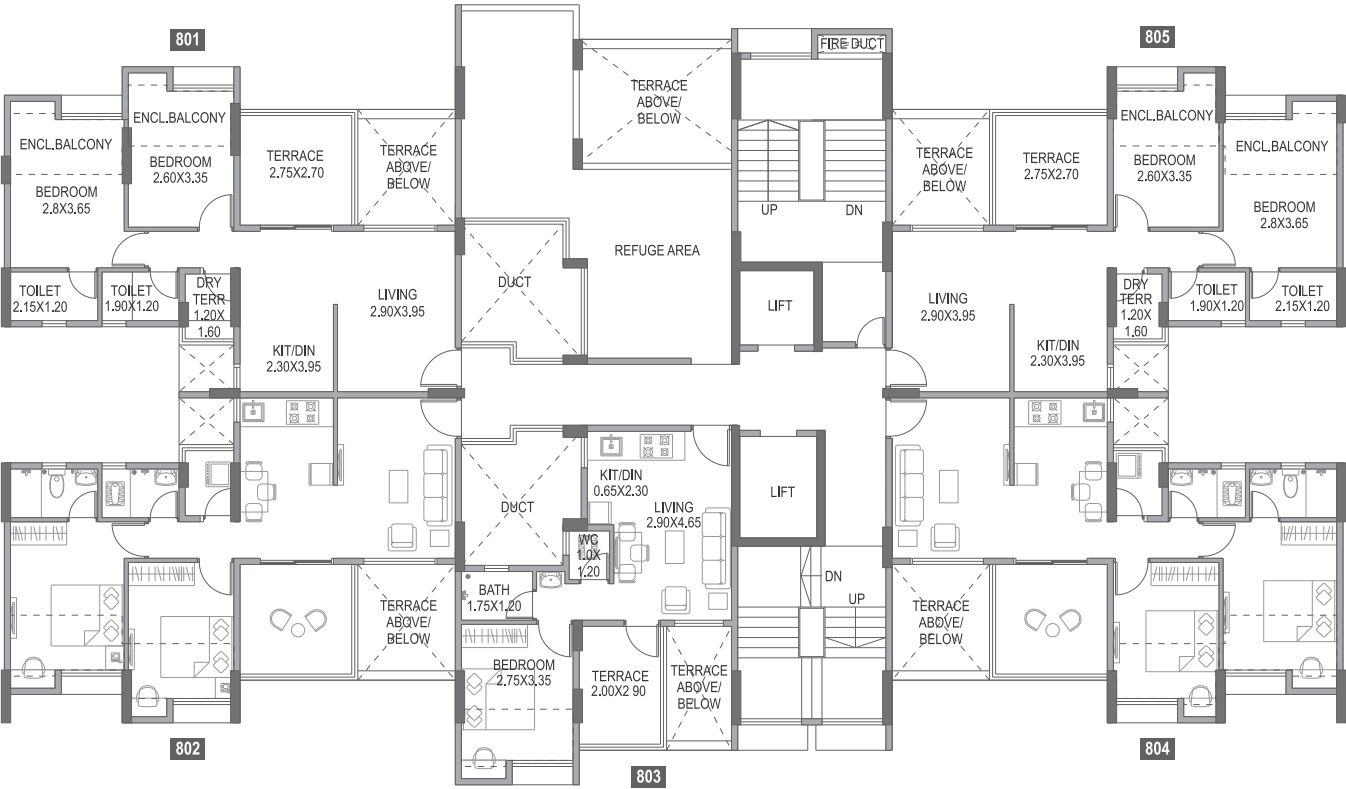
FLAT NO.	TYPE	CARPET AREA	ENCL. BALCONY AREA	CUPBOARD AREA	TERRACE CARPET AREA
1001	2 BHK	41.14	7.54	0.62	9.58
1003	1 BHK	26.77	3.60	0.33	5.82
1004	2 BHK	41.14	7.49	0.56	9.58
605,1005	2 BHK	41.14	7.49	0.56	9.58
606	1 BHK	26.77	3.60	0.33	5.82

FACTOR OF CONVERSION FROM SQ.M. TO SQ.FT. IS 10.764.

*NOTE: "carpet area" means the net usable floor area of an apartment, excluding the area covered by the external walls, areas under services shafts, exclusive balcony or verandah area and exclusive open terrace area, but includes the area covered by the internal partition walls of the apartment. Internal columns / shear walls embedded as a part of internal partition walls are included in carpet area.

BUILDING - A

8th FLOOR PLAN



AREA STATEMENT IN SQ.MT

FLAT NO.	TYPE	CARPET AREA	ENCL. BALCONY AREA	CUPBOARD AREA	TERRACE CARPET AREA
805	2 BHK	41.14	7.49	0.56	9.58
806	REFUGE AREA				

FACTOR OF CONVERSION FROM SQ.M. TO SQ.FT. IS 10.764.

*NOTE: "carpet area" means the net usable floor area of an apartment, excluding the area covered by the external walls, areas under services shafts, exclusive balcony or verandah area and exclusive open terrace area, but includes the area covered by the internal partition walls of the apartment.
Internal columns / shear walls embedded as a part of internal partition walls are included in carpet area.