



GR CONSTRUCTIONS
CREATING BETTER LIVING ENVIRONMENT

161/A, 7th Cross, Teachers Colony, 1st Stage, Kumaraswamy layout, Bangalore 560 078
Phone: 080 4207 4477, Cell: 99009 96000, E-mail: enquiry@grconstructions.co.in
www.grconstructions.co.in

MEMBER
CREDAI
BENGALURU

This brochure is conceptual in nature and is by no means a legal offering.
The promoters reserve the right to change, delete or add any specification or plan shown here in.

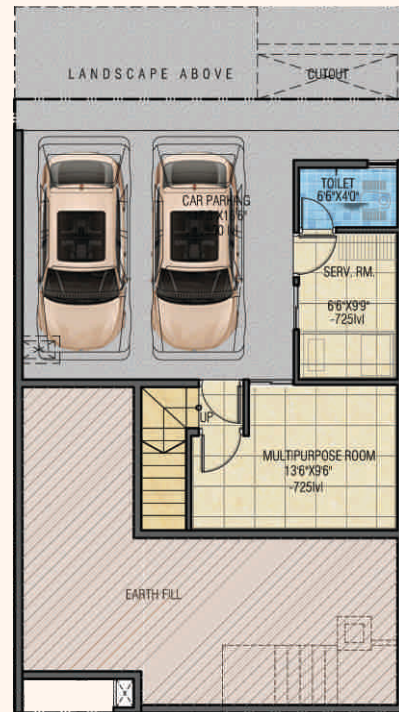


GR CONSTRUCTIONS
CREATING BETTER LIVING ENVIRONMENT

GR Santhrupthi

FLOOR PLANS CATALOGUE

Lower Ground Floor Plan - 4 BHK



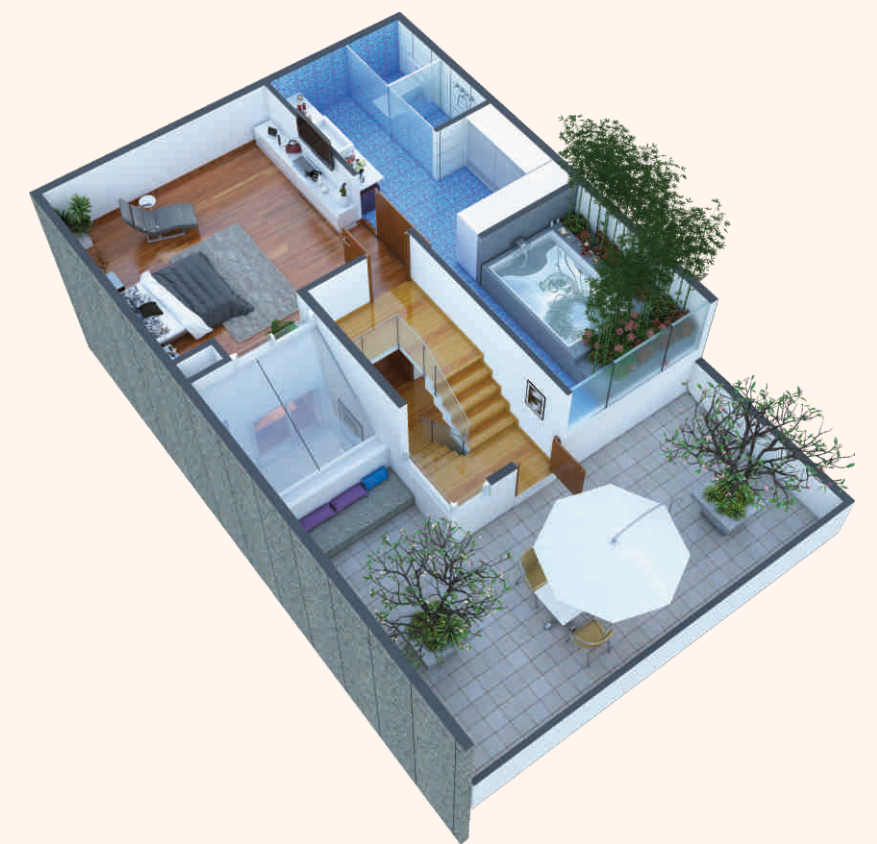
Upper Ground Floor Plan - 4 BHK



First Floor Plan - 4 BHK



Terrace Floor Plan - 4 BHK



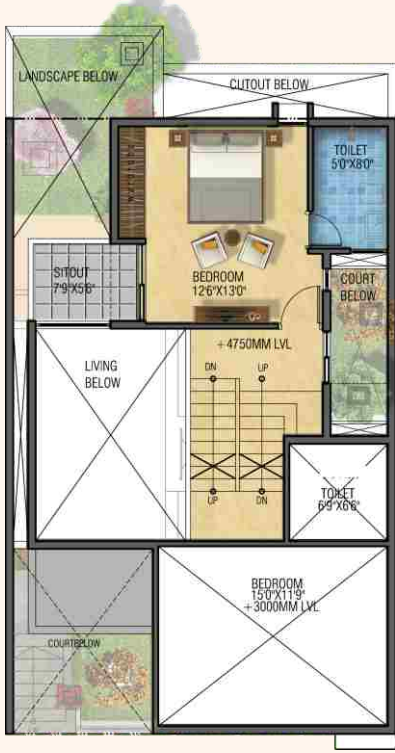
Lower Ground Floor Plan3 - BHK



Upper Ground Floor Plan - 3 BHK



First Floor Plan - 3 BHK



Second Floor Plan - 3 BHK



Specifications



STRUCTURE

- An RCC framed structure with 6”/4” Weinberger Block Masonry



CAR PARKING

- Covered portico car parking
- Flooring colour cement pavers or exultant tiles



FACADE & EXTERIORS

- External emulsion ACE or equivalent paint for exterior walls
- Driveways finished with interlocking heavy duty paver/grass pavers



DOORS & WINDOWS

- The main door and internal doors will be made with teak wood frames and designer veneered flush shutters along with good quality stainless steel finish hardware.
- Main door & Internal doors will be finished with a melamine polish.
- M.S grills and railings will be finished with white synthetic enamel paint.
- UPVC Sliding/casement windows and French windows with a provision for mosquito mesh shutters.
- Ventilators will be in Aluminum levers.



INTERIORS

- All internal walls and ceilings will be plastered with cement mortar and finished with base white oil bound/acrylic emulsion.
- Jaisalmer yellow Marble flooring in entrance lobbies, living and dining.
- Wooden flooring in two bedrooms at a flat and Vitrified tile flooring in other bedrooms.
- Sadarahalli or equitant granite flooring in kitchen.
- Anti-skid sadarahalli or equitant Granite flooring in Balcony and Utility.



KITCHEN

- Will supply black granite kitchen platform or equitant Granite for suitable size and made a reputed Stainless steel sink with drain board.
- Will supply Ceramic tile dado in granite to allow for a back splash up to 2 feet above the platform.
- Provision for a water purifier.



BATHROOM

- Ceramic Glazed tiles dado up to ceiling/false ceiling in all toilets.
- American Standard/Cera /Duravite or equivalent make sanitary ware.
- C.P. Fittings Jacquar Continental make/ Grohe or Equivalent.
- Plumbing concealed in medium class C.P.V.C./ P.V.C Pipes. All external plumbing, waste water pipes and storm water drains shall be in combination of PVC and Stoneware pipes.



ELECTRICAL

- Electrical circuits & wires with concealed fire resistant Havells/RR /Bangalore cableequivalent make Elegant modular electrical switches of Wipro, Havells or equivalent make.
- Telephone and Television points in living room.



GENERATOR

- Generator backup 4 kw individual flats.



SAFETY

- Centralized security provision at the entrance gate with intercom to all the houses.
- Video door phone for each house.
- CC camera for common areas.