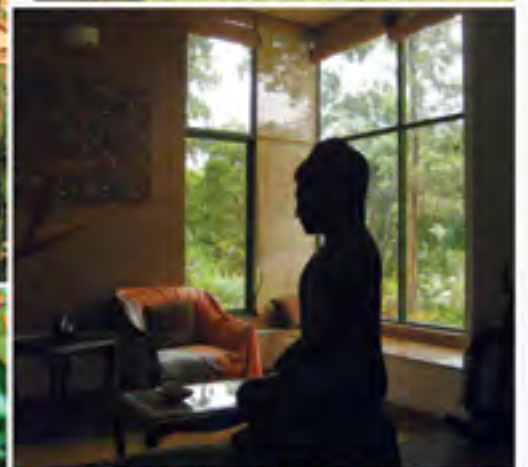




PERMIT NO: TP.10/123079/13



“THE EARTH DOES NOT BELONG TO MAN MAN BELONGS TO EARTH”

Good Earth has been the pioneer in the field of alternative architecture and environmentally sensitive development for the past 28 years. Through our efforts, we aspire to inspire change in the way people live.

With every project we undertake, we gain new insights and are equipped to provide solutions. Certain concepts about the individual and the community have evolved over time and so have our ideas. Eco-community is our attempt at bringing together people and nature to mutually benefit each other.

We invite you to join us in our journey towards a sustainable future. Good Earth is managed by a close knit group of individuals, involved in the project, right from the concept to design, to the implementation of the smallest details.





Vertical landscapes.

Highrises have made people detached from the earth below and Nature- the prime source of energy to the mind, body and soul. We believe in its connectivity to our lives, we should not build homes away from its true ecosystem.

With technological advancement, we have taken for granted the capability of natural healing and rejuvenation. We have become egoistic enough to create our own ambience artificially irrelevant of what nature provides us and irrelevant of how our actions may destroy it and hence our existence.

At Good Earth, we understand the need to smell those flowers, see those colours, breathe that fresh air, eat organic and make way for a new life. **Good Earth - walk on the clouds** does not just take you high above, but takes you with a speck of green.

Being worshipers of a life with nature, while going high we have tried to bring with us a part of it from ground zero. The wide opening into the balcony brings in light, breeze to cool the interiors and create good airflow and natural ventilation. The patio to the balcony provide your outdoor seating space even though you are several meters above ground.

LIVE YOUR DREAMS WITH Good Earth - **walk on the clouds**

We at Good Earth bring you our new endeavour, **walk on the clouds**.

Good Earth is a community experimenting and innovating to create those niches for sustainable living. We believe in the togetherness of like minded people to form a unique community that lives with sensitivity towards Nature and one another .

In observing community life in our completed projects and otherwise, we have realised the need for personal spaces for warm family bonding, and the need for micro commune spaces for smaller group interactions with a sense of belonging and security. Every space we create gives a positive ambience for the individual to evolve.

Today, where a patch of land is the most sought after, we have come to rise above the sky bringing along, a speck of Nature to **Good Earth - walk on the clouds**.



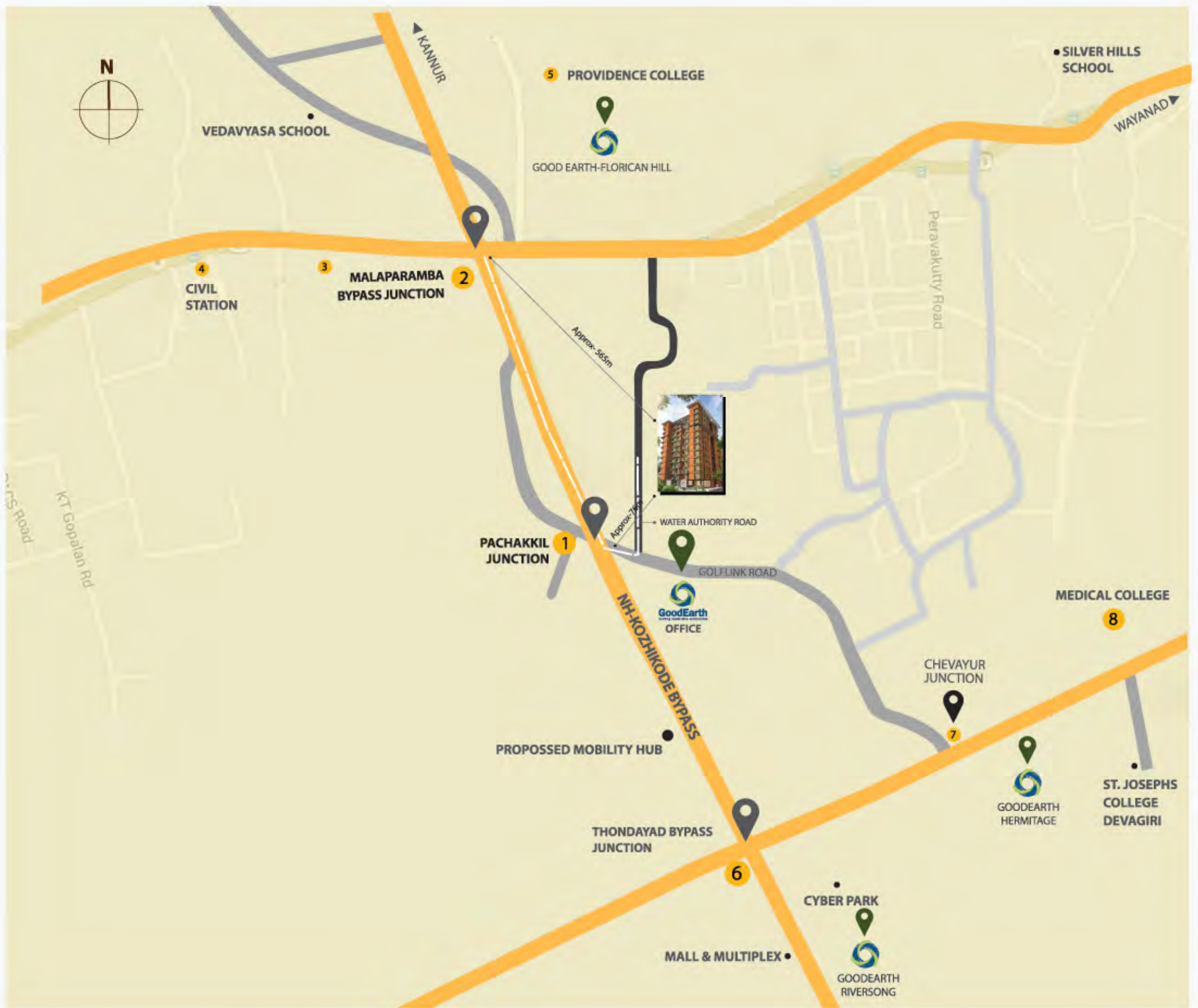
GOODEARTH HOMES TOWARDS SUSTAINABLE LIVING

Sustainability is the key to a progressive future. The practices need to start from our basics, at home. We, at Good Earth, try our best to follow sustainable construction practices in the most innovative and workable manner possible. Defying sophisticated technological interventions, to provide you with homes that are less warmer than expected, keeping you close to nature, inducing community interaction and bonding, while providing all modern amenities and facilities for the modern lifestyle.

Cavity wall construction provides a second skin to the building with a buffer for temperature control. Meticulous planning has helped us to avoid wastage of space. We have achieved maximum usable space for each individual units. Living areas are connected to the outdoor by green balconies to step out into the sun just like an individual home. Large fenestrations outward to these balconies gives connect to the living space .

Good Earth homes are alternative housing solutions that respect nature, land, individual needs and community development by means of sustainable practices in construction and planning to imbibe sustainable living.



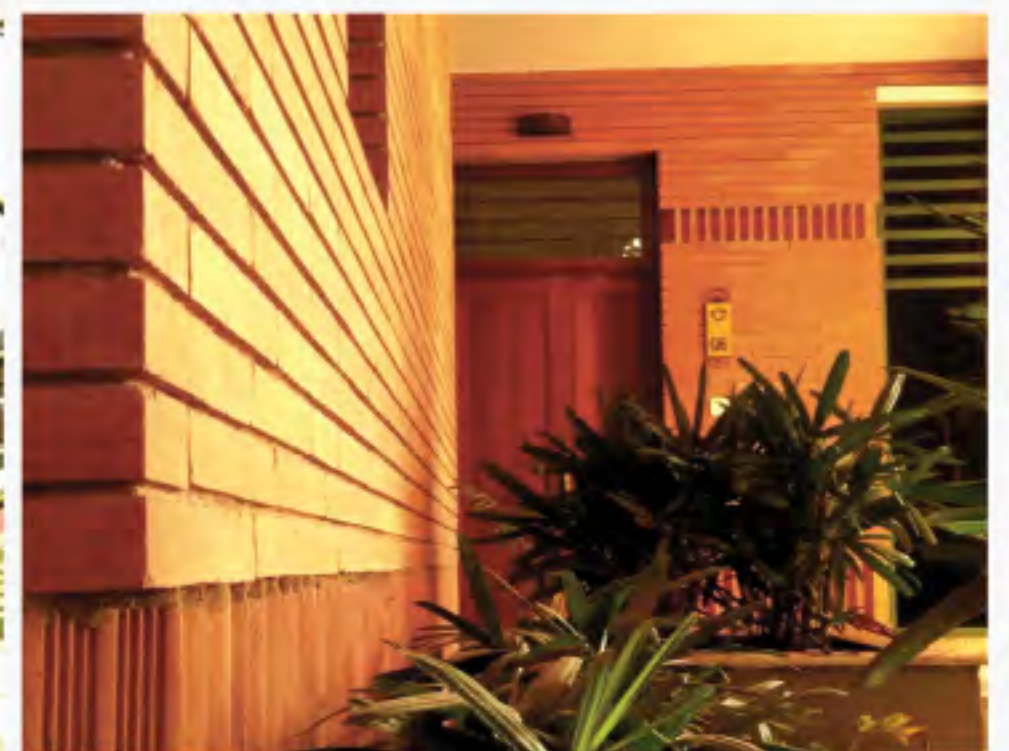


Distance chart from GoodEarth-walk on the clouds to each landmark.

1. Pachakkil Junction	75 M
2. Malaparamba Junction	550 M
3. IQRAA Hospital	1.3 KM
4. Civil Station	1.9 KM
5. Providence College	1.9 KM
6. Thodayad bypass Junction	2.0 KM
7. Chevayur Junction	3.2 KM
8. Medical College	5.2 KM

LOCATION

In the new horizon of Kozhikode, along NH 17 in the city's most sought after residential suburbs- **Malaparamba** is where **Good Earth- walk on the clouds** shall rise. This bypass is considered to be the spine of Kozhikode. Cyberpark, Medical and other educational institutions, are nearby. Kozhikode Medical College is just 5.2 km away, one could not have a more ideal location for a fine living.



AMENITIES

Swimming pool

We provide the luxury of an indoor swimming pool which can also be used as a mini party space. It has deck space for poolside relaxation



Club house/ Party area

The Club house/ party area is in the roof top that can accommodate your family & friends. This party area provides space for all your social gatherings.



Gym

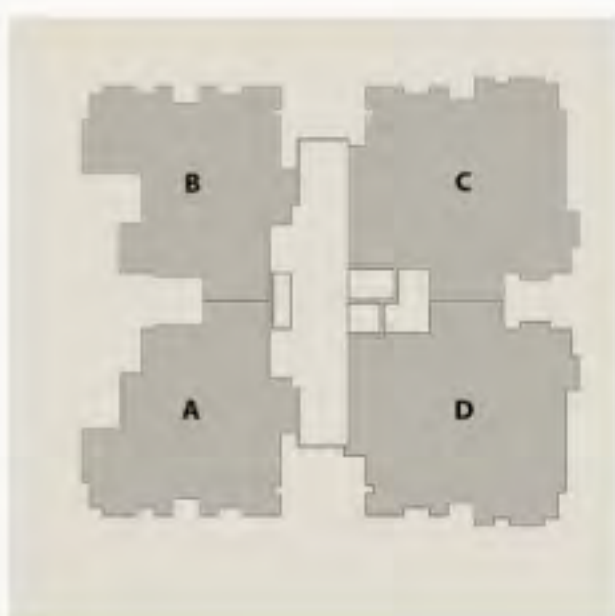
The multi purpose gymnasium has equipments to help you lead a healthier life.



- Entry Lounge
- Association Room
- Caretaker Room
- Drivers Room
- Security Systems



TYPICAL FLOOR PLAN



UNIT A / B - 2 BED + STUDY

AREA :1527- 1540 sq.ft



UNIT C / D - 3 BED

AREA :1936 - 1971 sq.ft



DUPLEX A / B - 10 & 11 FLOORS

AREA: 2747 - 2898 sq.ft



(LOWER LEVEL)





(UPPER LEVEL)

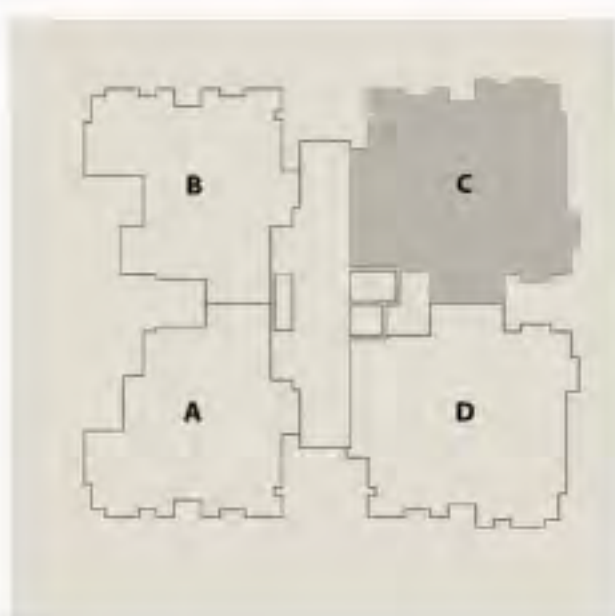


DUPLEX C / D - 10 & 11 FLOORS

AREA :3200 - 3294 sq.ft



(LOWER LEVEL)





(UPPER LEVEL)



PENT HOUSE - FLOOR 12

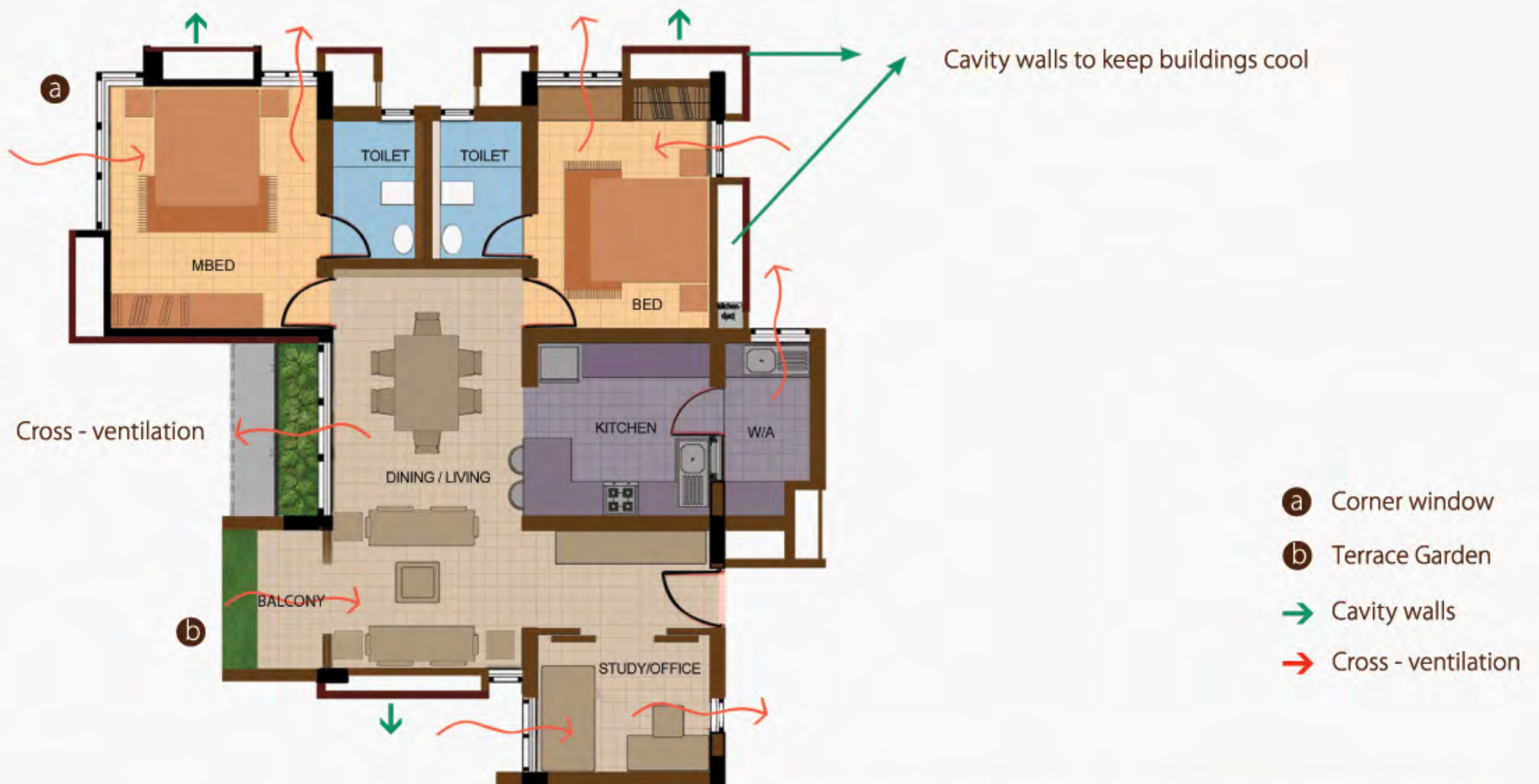
AREA : 3368 sq.ft



SUSTAINABLE CONCEPTS

In, the most common definition , sustainability is referred to as meeting the needs of the present without compromising the ability of future generations to meet their own needs.

Sustainable development is that which raises the quality of life and serves the goal of achieving global equity in the distribution of the Earth's resources. Conserving its natural capital and achieving significant and sustained reductions in all forms of pollution. The objective of this approach is to " seek by design a low-energy, passive building and better occupant comfort."



COOLER INSIDES

Designing a shelter in the tropics is challenging. One needs to shade from the harsh sun, the driving rains and yet let in light for warmth and wind for humidity control, which is the key to create a more comfortable micro climate in the interiors. We believe this aspect is well taken care of in the balconies having deep sun shades and critical location of fenestrations allowing for ideal wind flow.

Building cavity walls as a second skin to shield our walls from heating up with the harsh sun is an innovative technique being executed by Good Earth. To fight extreme climates, technology has always sought to mechanical and electrical services for maintaining an ambient atmosphere in the interiors. This calls for high operational running costs that keep escalating with economic fluctuations.



SUSTAINABLE CONCEPTS

Rain water harvesting & Recharging

Rainwater is harvested by means of roof run-off water, that is collected in the water tank after passing through a series of filters. Ground water recharge is ensured.

Water recycling

The site shall have a dedicated sewage treatment plant that recycles waste water. Used water from kitchen and bathrooms is collected and treated via a number of filters and is used for irrigation purposes to the site's landscapes.

Waste management

We intend to provide an efficient waste management system where biodegradable and non-bio degradable wastes are separated at source. Bio degradable maybe composted to be used as manure. Metals and plastics can be transferred to agencies for recycling or disposing



walk on the clouds

DESIGN INNOVATIONS



The effort at Good Earth is to create functional benefits of friendly homes in harmony with nature. With the Earth taking a toll of growing population and increased eco-imbalance, the need for homes that are sensitive to the eco-system is need of the hour. Healthy living conditions for the inhabitants need to be ensured. The construction is based on eco principles and energy conservation. The direction of the design team is to ensure a sustainable environment that is friendly for the users.

Capturing views

The right direction, the size and the position is what makes a picture perfect. Our openings are planned for those perfect frames. To look out at the morning sun, feel the breeze in the evening at your living space, keep gazing into the sky. All fenestrations come with simple detailing for maximum view and fine finishes that adds on to fine living. Corner windows to the outdoors, create seamless views to the sky.

An open house

Planning of individual units has open and free flowing spaces. The living, dining, kitchen and unit gardens are all linked for visual continuity and a sense of openness. The bedrooms are made private, while all other spaces are closely knit together for interaction and bonding within the family.

Cavity walls

A double layer skin built using hollow terracotta blocks help keeping the interior cooler than the external climate. It also shields from the heavy moisture during the monsoons. The cavity formed in between the double walls provide a continuous air flow venting out hot air through the roof keeping the internal walls cooler and more comfortable to stay in.



THE MAKING OF

walk on the clouds

Foundation

Deep and bearing pile up to hard rock with RCC pile cap and grade beams.

Super structure

RCC framed structure with columns and beams. Aesthetically done exposed terracotta perforated brickmasonry for external and solid block masonry plastered on either sides for internal walls.

Finishes

Exterior wall finishes: Combination of painted walls and cavity walls with exposed terracotta blocks. All internal walls except those of utility/ work areas and toilets rendered with putty and emulsion paints.

A team can accomplish more than what an individual can , a proven fact, especially with the Good Earth team . We are a group of innovative architects, engineers, designers and craftspersons who find ecstasy in the process of creativity. A dedicated team is able to create an environment for better living.



INTERNAL FINISHES



Finishes

External - Walls treated with a combination of terracotta blocks and plastered surfaces finished with exterior paints.

Painting - Putty finish for all internal walls except work area and toilets. Emulsion paint of premium brand (Green rated).

M S Grills and Railings - M S grills and railings coated with enamel paint.

Tiling - Rustic series tile 60x60 cms for living, dining bed room and kitchen.

Anti skid floor tile and wall dado up to 7 ft for toilets.

Doors & Windows

Main Door - Quality seasoned hardwood with matte wood polish and premium brand fixtures.

Internal Doors – Moulded skin, flush doors.

Windows - Anodized powder coated aluminum for all windows using premium sections & hardware.

Electrical

3 Phase wiring with copper cables of premium brands - in concealed PVC conduits.

ELCB and MCB of premium brands.

Automatic change over from KSEB to generator.

Modular switches and sockets of premium brands.

Generator back up.

Water

Treated Ground water for drinking purpose.

Ground water/rainwater for non drinking purpose.

Recycled water for gardening.

Rain water harvesting: collection and treatment- as per norms.

Sanitary fixtures

White ceramic wash basins and EWC with twin flush cistern of premium brand.

Chrome plated tap fixtures of premium brands.

Waste Management

Sewage and grey water fully treated with adequate Sewage Treatment systems.

Appropriate solid waste management system.

Organic waste management.



Disclaimer : All plans, specification, artistic renderings and images as shown in this brochure are only indicative and are subject to change as may be decided by the company or directed by any competent authority in the best interests of the development. Soft furnishing, furniture and gadgets do not form a part of the offering. All plans & specifications are subject to change. The actual size of the rooms may vary marginally.



BUILDING WITH NATURE

To create a space where shared ideas and notions of life can evolve and take shape.
A place where you find an uncommon, but spontaneous expression of nature's sacred spirit.
A special ecoscape where nature can breathe easy, heal and flourish, bringing together like minded people with a common vision for a sustainable future. Certain concepts about the individual and the community have evolved over time, and so have our ideas.



We invite you to join the **Good Earth** family in our journey towards a sustainable future...



GAIA Properties & Infrastructure India (P) Ltd.
 Golf Link Road, Pachakkil, Malaparamba P.O
 Kozhikode, PIN 673009 , Kerala, India.

Call +91 9496 410000 / +91 495 237 0293

E-mail: mail@goodearthhomes.org, [Facebook.com/gecalicut](https://www.facebook.com/gecalicut)

www.goodearth.org.in

PROJECTS AT KOZHIKODE, KOCHI & BENGALURU

