

# 612

Elevate

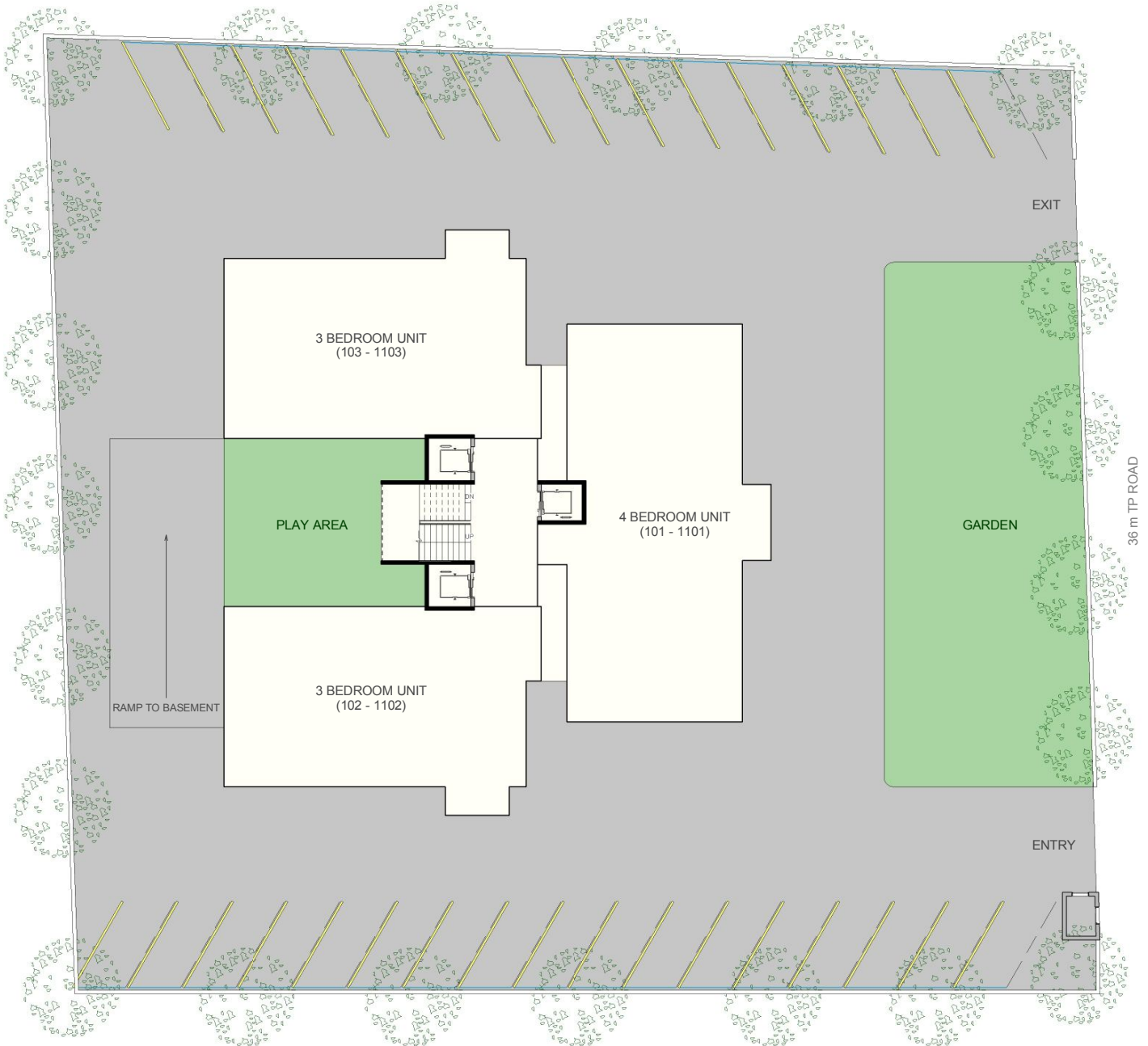


**AMAYA**  
PROPERTIES LLP



# 612

Elevate



SITE PLAN



# 612

Elevate



TYPICAL FLOOR PLAN (FLOORS 1-10)



*Located in a prime residential neighborhood, 612 Elevate is a 12 storey building with eco-sensitive features and modern amenities offering options with excellent open views.*

### **Project Features**

- Centrally located and surrounded by low-rise residential development
- 3 and 4 BHK options on each floor
- Luxurious duplex penthouses with private terrace
- High quality construction and finishes
- Practically designed eco-friendly features
- Surrounded with full grown trees
- Landscaped garden
- Safe play area for children
- Well-equipped gym
- Security systems with CCTV
- Central satellite dish
- Water pressure system
- 3 elevators including a separate service elevator
- Parking spaces in basement and ground level
- Designated waiting area for staff

### **Specifications**

- Flooring options
  - Living, dining, hallway and foyer – 2'x2' vitrified tiles
  - Bedroom – laminate wood / 2'x2' vitrified tiles
  - Kitchen – vitrified tiles
- Toilet – floor: vitrified; dado: glass mosaic / tile
- Thermally efficient walls with aerated concrete blocks
- Internal wall finish: plaster, putty finish ready to paint
- Natural stone window trims

### **Unit Features**

- Open plan with large living/dining area
- Floating balcony with glass railing
- Large windows and veneer doors
- Provisions for AC, water heater and PNG gas connections
- Pre-installed ducts for internal cabling
- Separate staff room with attached toilet

### **Services**

- Developer supported property management services
- Professionally managed common amenities and landscape
- Repair and maintenance services on call

- Living room sliding aluminum glass doors
- Aluminum windows with fly mesh
- Flush doors with veneer
- Toilet fixtures: Kohler
- Easily accessible supply and drainage lines for maintenance
- Modular plate type switches with copper wiring and safety switchgear
- Kitchen with water supply and drainage points – fit out by client



+91 98251 49229 [info@amayaproperties.com](mailto:info@amayaproperties.com) [www.amayaproperties.com](http://www.amayaproperties.com)