



Yug 
HEIGHTS

Escalate Your Living

12 Storey Residential Tower with Podium Garden
SHILPHATA



About Us

Prathemesh Group established since 1995 believes in satisfying our Customer demands and needs. We are established home makers of Navi –Mumbai.

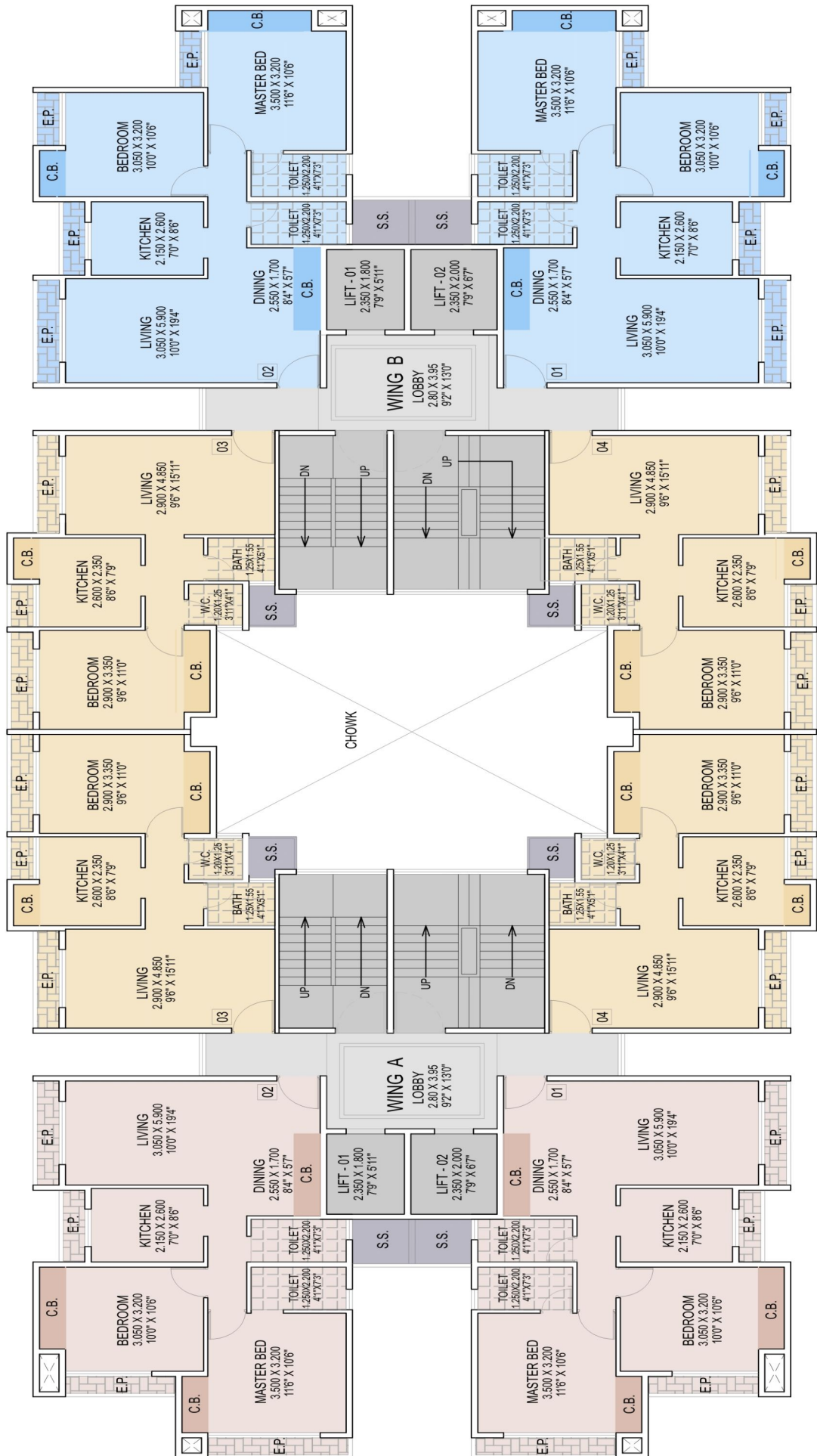
The bond we share with our customers extends beyond business with emphasis on delivery & after sales services.

Living up to our Company policy we bring dreams alive by providing exclusive life style homes at affordable prices.

About Yug Heights

Nestled in one of the most promising upcoming residential areas of MMRDA region, Yug Heights promises to provide the perfect blend of budget housing with luxurious living.

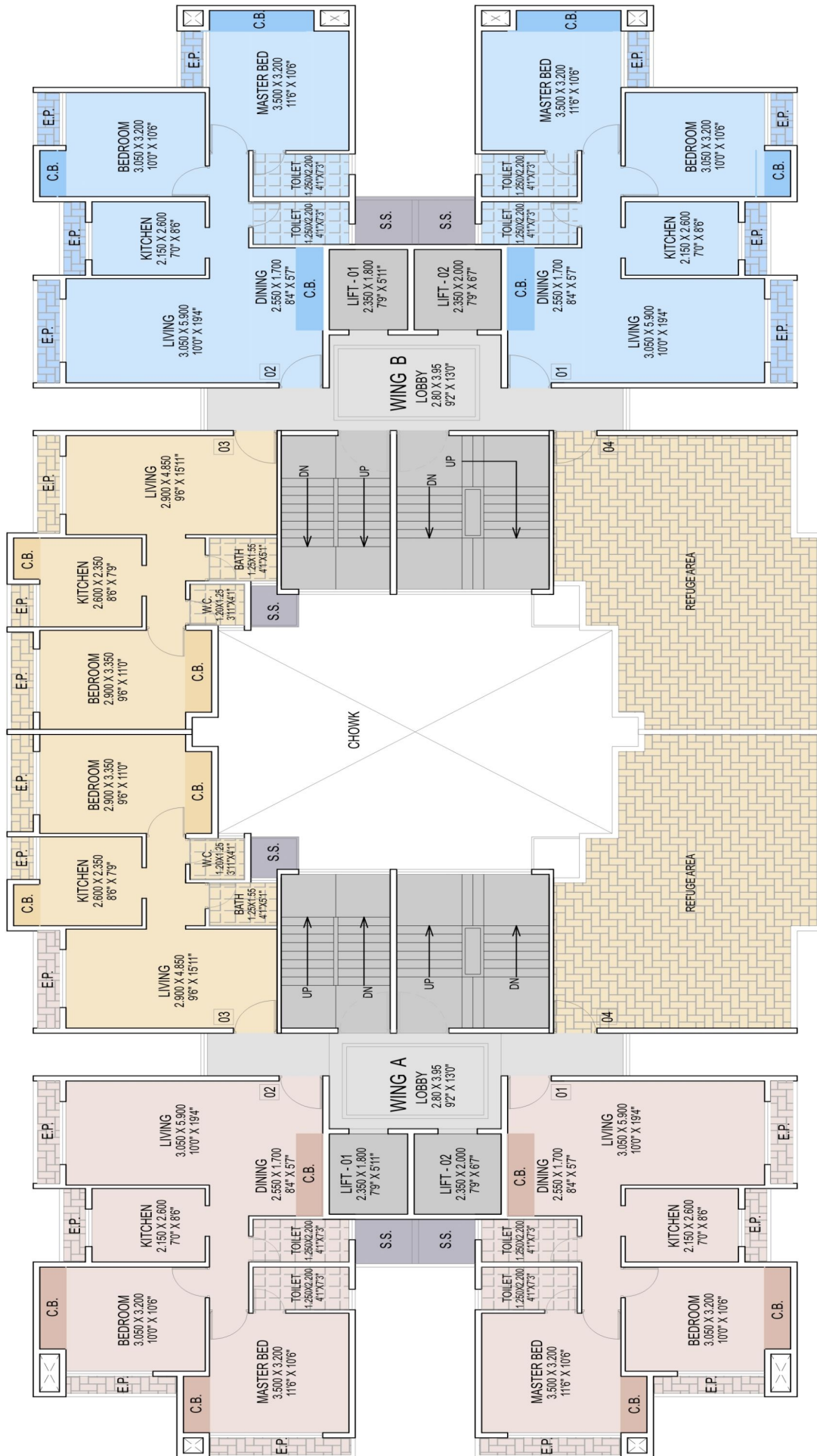




'A' WING
1ST,2ND,3RD,4TH,5TH,6TH,7TH,9TH,10TH & 11TH FLOOR PLAN

'B' WING
1ST,2ND,3RD,4TH,5TH,6TH,7TH,9TH,10TH & 11TH FLOOR PLAN

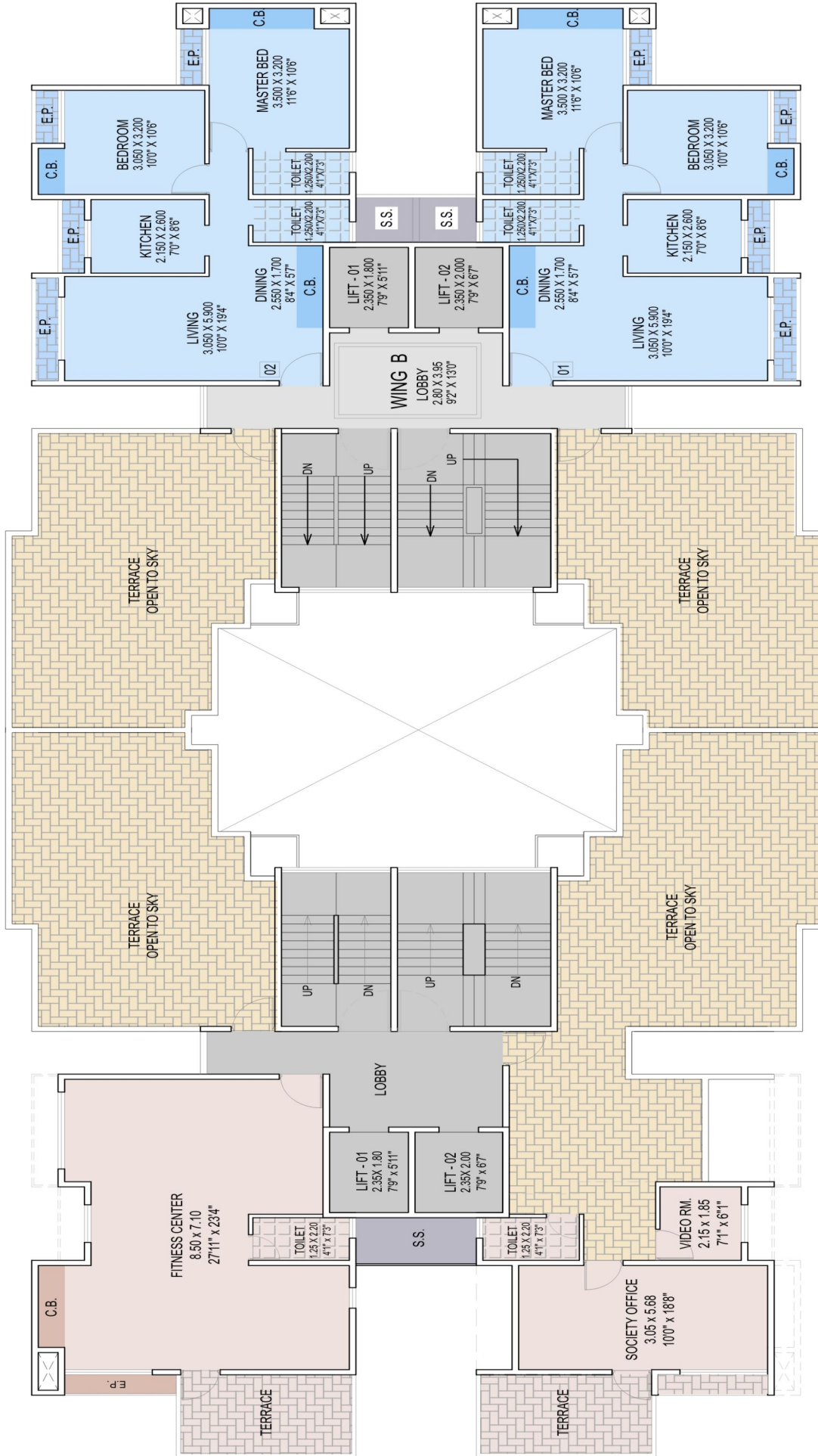
TYPICAL FLOOR PLAN



'A' WING
8TH FLOOR PLAN

'B' WING
8TH FLOOR PLAN

8TH FLOOR PLAN



12TH FLOOR PLAN

'B' WING
12TH FLOOR PLAN

'A' WING
12TH FLOOR PLAN



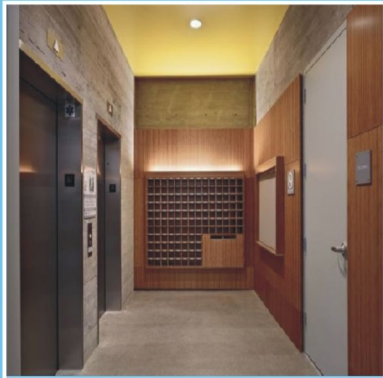
1 BHK Room



2 BHK Room

External Amenities

- Earth quake resistant RCC Structure
- Attractive Elevation & Entrance
- Fitness Centre
- Children Play Area
- Recreation Area
- Society Office
- Video Room (CCTV)
- Power Backup-Inverter for common facilities
- Solar Power
- Rain Water Harvesting
- Stilt Stack Parking
- Security Cabin, Meter room & Transformer

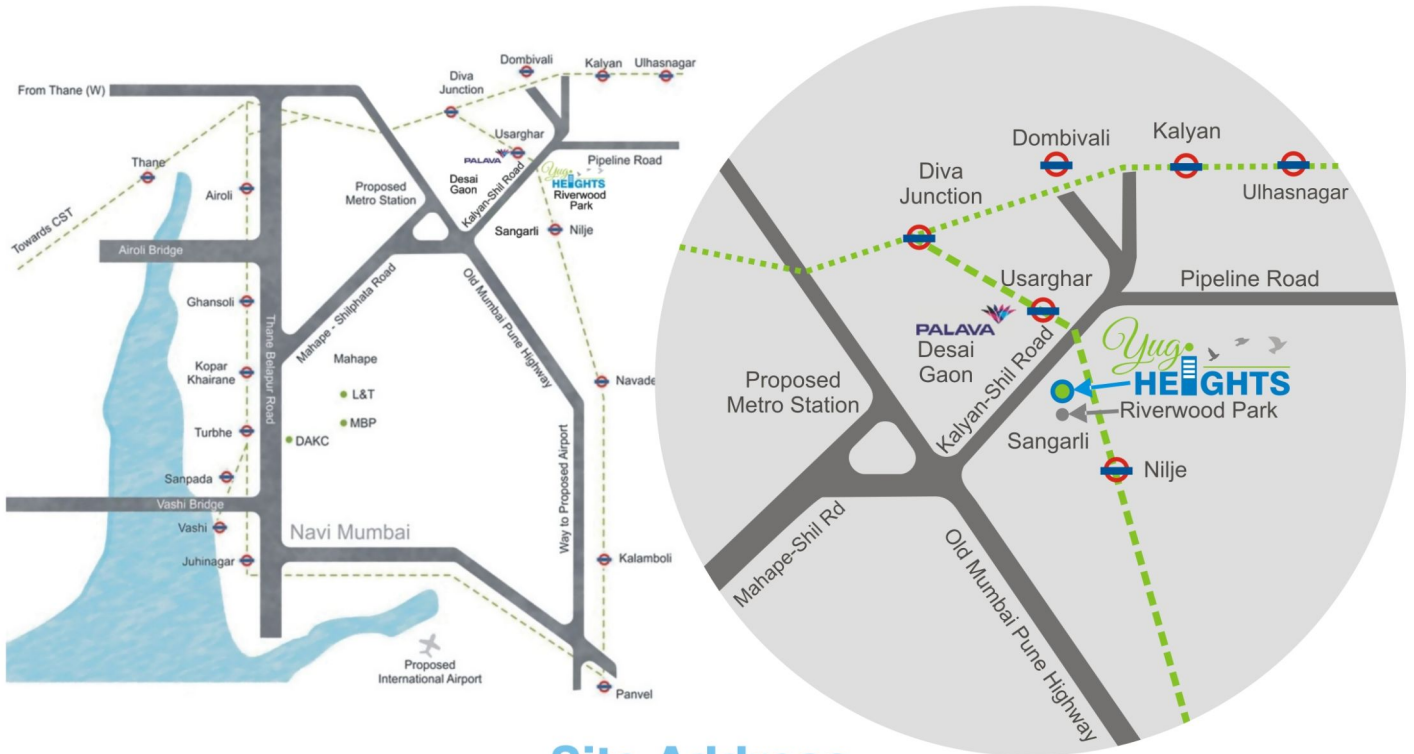


Internal Amenities

- Designer Lobby with Marble Flooring
- Intercom Facility
- Hi Tech fire fighting System
- Exclusive High-speed Lifts
- 2' x 2' flooring vitrified Tiles in all rooms.
- Granite platform in kitchen with S.S. Sink
- 3 Ft. Height Dado in Kitchen
- Door Height Ceramic tiles in bath rooms with Anti skid flooring
- Anodised Aluminum Sliding windows with tinted Glasses
- Concealed Copper wiring with Modular Switches
- Concealed Plumbing with premium fittings
- Designer laminated flush front door with brass fittings
- Good ventilation & Vastu Complaint
- Gypsum / Putty on walls



Location Plan



Site Address

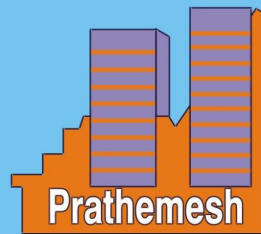
Survey No.19, H.No.5 at Village - Sangarli, Shil-Kalyan Road, Taluka and District - Thane, Pin No: 421 204.

Location Advantages

- Connectivity with Navi Mumbai, Thane, Dombivali, Kalyan
- 30 mints drive to proposed International Airport
- Bus Services by TMT, NMMT, KDMT, & ST
- 5 mints from Nilje Railway Station
- Banks , Market, Schools, Hospitals, Colleges & Shopping Mall all in vicinity.
- Near Mahape IT Hub

MAHA RERA No.: P51700014553

R.S. Constructions (Builders & Developers)



Prathemesh Group
Bringing dreams alive

Office Address

407, Punit Chambers, Plot No. 796-C, Sector 18, Turbhe, Vashi, Navi Mumbai - 400 703.

Tel.: 6510 8989 / 6510 8966 Telefax : 2788 2333

E-mail : info@prathemeshgroup.com / prathemeshconstruction@yahoo.com

Visit us at : www.prathemeshgroup.com

The project has been registered via MahaRERA registration number: P51700014553 and is available on the website : <https://maharera.mahaonline.gov.in> under registered projects.