



[www.livethenobleway.com](http://www.livethenobleway.com)

---



A chance to  
indulge in opulence



NOBLE  
THE ART OF BUILDING

star

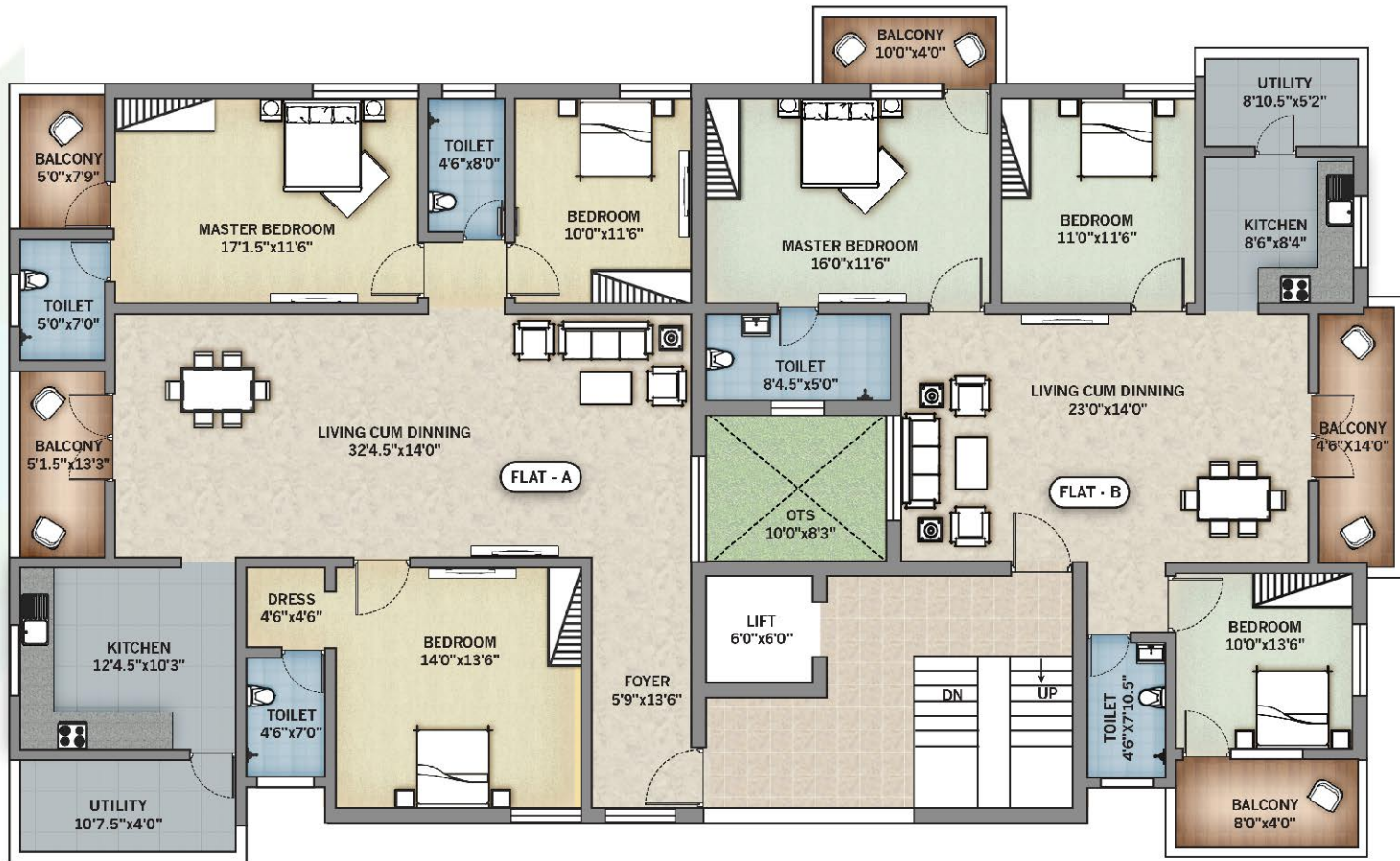
NOBLE  
**star**

**We respect your need for privacy.  
We understood your tastes for fine design and comforts.  
Your wish became our command.**

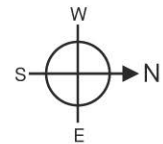
**Noble Star** houses 8 premium luxury apartments in 4 floors with total vastu compliance. Noble star located at one of the best residential domain - Krishnaswamy Nagar, Ramanathapuram, Coimbatore.



# Typical Floor plan



<p>Flat A - 1933 sq.ft North facing</p>	<p>Flat B - 1542 sq.ft East facing</p>
---	--



# TECHNICAL HIGHLIGHTS

---

## STRUCTURES

- Floors : Stilt + 4 Floors  
Structure : RCC Framed Structure, Bricks neatly finished with cement plastering

## FLOORING

- Floor : 600 X 600 mm vitrified tiles with skirting for all rooms  
Kitchen : Matt finish tiles with 600X600mm.  
20mm thick ZET black Polished Granite table top with SS sink (Nirali) Bowl  
Dado with Glazed tiles themes up to 700 mm height  
Open terrace : Weather proof clay tiles  
Car park : Individual car parking with Grano/paver Block flooring  
Utility / Balcony : Rustic Ceramic Tiles (anti-skid tile)  
Staircase : Granite Flooring with MS Handrails  
Corridor : Granite and Vitrified Flooring with Concept type  
Toilets : Dado with Glazed tiles themes up to 8'0" Height

## FINISHES

- Interior : 2 coat of putty +1 coat of primer & 2 coats of premium Emulsion Paint  
Exterior : Emulsion Paint with weather coating  
Grills : Zinc chromate non corrosive primer with enamel paint

## DOORS

- Main Doors : Teak wood Frame / equivalent with Teak Veneer Polished flush door  
Other Doors : Country wood frame with one side laminated flush door shutter  
Bathroom/Utility : Country wood frame with painted flush door shutter  
Windows : UPVC windows with MS Safety grills

## PLUMBING & SANITARY

- Water Supply Pipe Line: Concealed CPVC pipe lines in all bathrooms, UPVC for other plumbing lines  
Sanitary Fittings : Kohler/Equivalent-wall mounts  
CP Fittings : Kohler/Equivalent  
Water Pipeline : RO water for drinking, for others bore water

## ELECTRICAL FIXTURES & FITTINGS

- Cables / Wires : Finolex/Havells / Kundan (or) Equivalent ISI Approved brand cables  
Modular Switches : MK/Legrand  
MCB, ELCB, & DB : MK/Legrand  
Power Back Up : 1000 Watts power back up

## AMENITIES

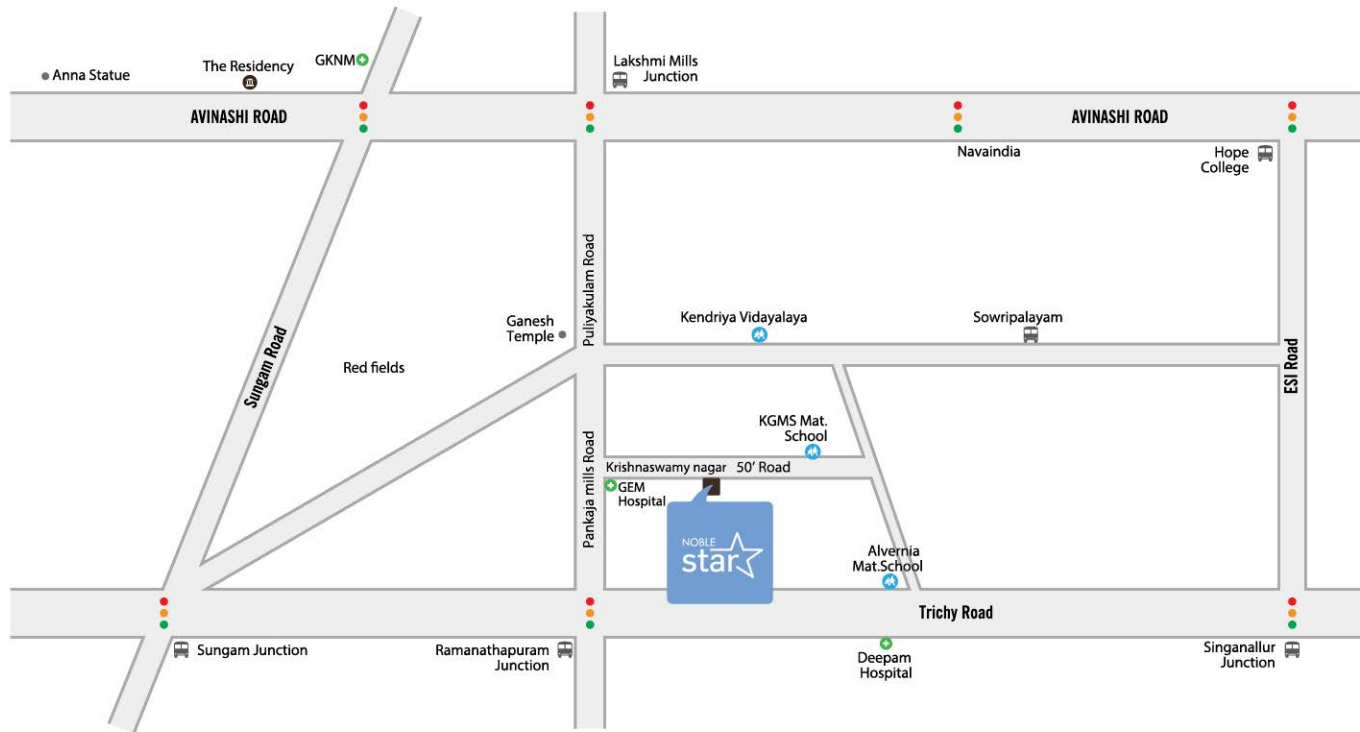
- Community Hall with attached toilet at terrace floor
- Security Room with CCTV provision
- One Service toilet provision at Stilt Floor

**NOBLE BUSINESS VENTURES** has been successfully delivering residential, commercial projects for many years at prime locations in coimbatore.

Every project is made inimitable and to stand out from others, like a masterpiece, making the owners proud and delighted, while increasing their standard of living.

Sustainable design with eco-friendly architecture is the attribute of all NOBLE Projects.

## LOCATION MAP



**For Booking : 90476 22333, 97877 33322**



Promoted by

**NOBLE BUSINESS VENTURES INDIA PVT. LTD.**

No: 1111/2, Noble Centre, First Floor, P.N.Palayam,  
Lakshmi Mill Stop, Avinashi Road, Coimbatore - 641 037.

Voice : +91 422 4502333

[sales@livethenobleway.com](mailto:sales@livethenobleway.com)

[www.livethenobleway.com](http://www.livethenobleway.com)