



A well –designed, centrally located and yet affordable home?

It was a well-kept secret until now.



Contact Us



+91 9840798047



+91 7299522555



info@nithinproperty.in

Sripathy Towers, Flat No: S-2, II Floor, "A" Block, Plot No. 1-4,
Syndicate Bank Colony, Pallavaram-OMR Radial Road, Kovilambakkam, Chennai - 600 017

Thoughtfully Designed

-  Elevator Facility
-  Reserved Parking
-  Metro Water Supply
-  Efficient Drainage System
-  Sufficient Water Storage
-  Rain Water Harvesting
-  Provisioning for Home Appliances
-  Vastu Compliant



Centrally Located

-  Athipathi **Hospital** (1 km)
Anna Theresa **Hospital** (2 km)
-  Velachery **Station** (0.8 km)
Vijay Nagar **Bus Depot** (1 km)
-  Phoenix **Mall** (3.5 km)
Grand Mall **Bus Depot** (0.6 km)
-  D.A.V Public **School** (0.6 km)
Balaji Dental **College** (4 km)





Floor Plan

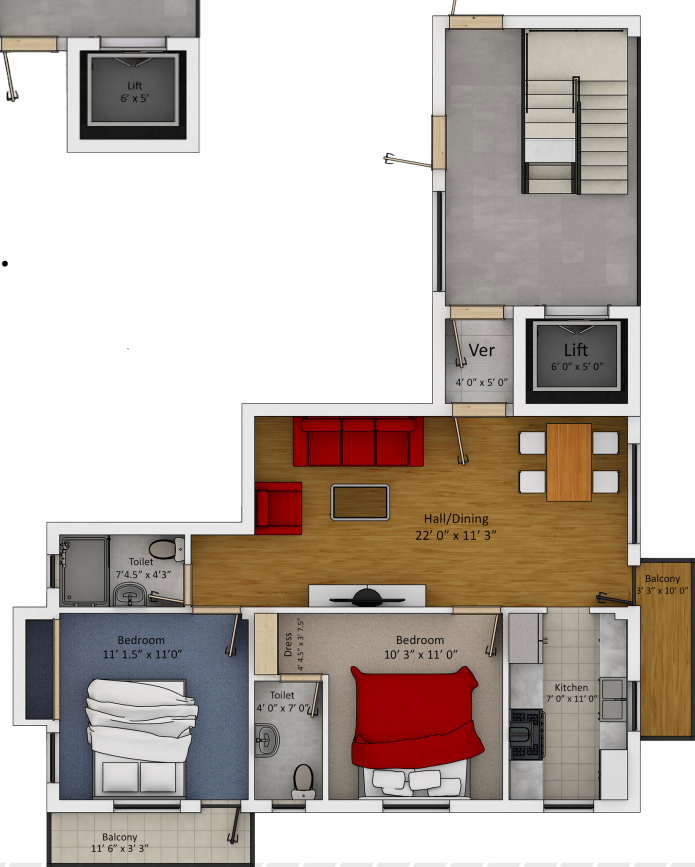
We listened. We vetted. We tried and tested. Did everything to bring you the most attentively designed living spaces that adapt to your changing lifestyle.



F1 / S1
1049 sq. ft.



F2 / S2
889 sq. ft.



F3 / S3
1059 sq. ft.



Quality Matters



Premium Sanitary Ware



Vitrified Anti-Skid Tiling



High Quality Woodwork



Best in Class Electricals



Finest Paint job



But Why Us?

Because we are in the business of crafting homes for our customers. A home where your dreams and hopes can reside. We take pride in bringing you the finest living spaces that you can easily afford.

Let's get started.



+91 9840798047



info@nithinproperty.in



+91 7299522555



Sripathy Towers, Flat No: S-2, II Floor, "A" Block, Plot No. 1-4,
Syndicate Bank Colony, Pallavaram-OMR Radial Road, Kovilambakkam, Chennai - 600 017