

*Homes with Space and Grace*



# INLAND EVINCE

*Residential Apartments*

KADRI TEMPLE ROAD, MANGALORE



*INLAND EVINCE, a stylish & modern apartment complex, is yet another value addition to the city of Mangalore. Situated in serene and idyllic surroundings of Kadri Temple Road, it has 28 well crafted and elegant apartments on four floors. Its location in the heart of the city is guaranteed to change the quality of life for its residents.*

## HIGHLIGHTS

- ▶ 28 meticulously designed Apartments in 4 Floors
- ▶ 7 Flats in each floor
  - 1 BHK measuring 785sq.ft
  - 2 BHK measuring 1255 & 1275 sq.ft.
  - 3 BHK measuring 1550, 1565 & 1620 sq. ft.
- ▶ Two Automatic Elevator, each with 8 passenger capacity
- ▶ Gymnasium on the terrace floor
- ▶ Generator with sound proof enclosure for common and apartment lighting
- ▶ Intercom facility
- ▶ Fire Fighting system with fire Control room
- ▶ Car Parking (at extra cost)
- ▶ Reticulated Gas Connection (at extra cost)
- ▶ Concrete Interlock Paving for car parking
- ▶ Modular Electrical Switches

## SPECIFICATIONS

### GENERAL

- ▶ Fully framed R.C.C. structure laterite walls for exteriors and concrete blocks for internal walls
- ▶ Double coat exterior plastering
- ▶ External paint of the building with antifungal exterior emulsion
- ▶ Putty finished emulsion paint for internal walls and ceilings
- ▶ Attractive and elegant melamine polished main entrance door
- ▶ Superior Vitrified Floor Tiles inside the apartments
- ▶ Polished wooden door frames with laminated flush shutters for rooms
- ▶ R.C.C. door frames with good quality fibrotech shutters for toilets
- ▶ Aluminum windows with sliding shutters
- ▶ Overhead water tank and underground sump tank with required pumps
- ▶ Water supply from borewell in addition to the Corporation water connection

### DRAWING/DINING

- ▶ Telephone / T.V. Point / Intercom connection
- ▶ Wash Basin for Dining

### BEDROOMS

- ▶ TV point and telephone points in Master bedroom.
- ▶ AC provision for all Bedrooms

### BATHROOMS

- ▶ Anti-skid Ceramic tile flooring and glazed tile dado upto full height.
- ▶ Wall mounted E.W.C for all toilets

### KITCHEN/UTILITY

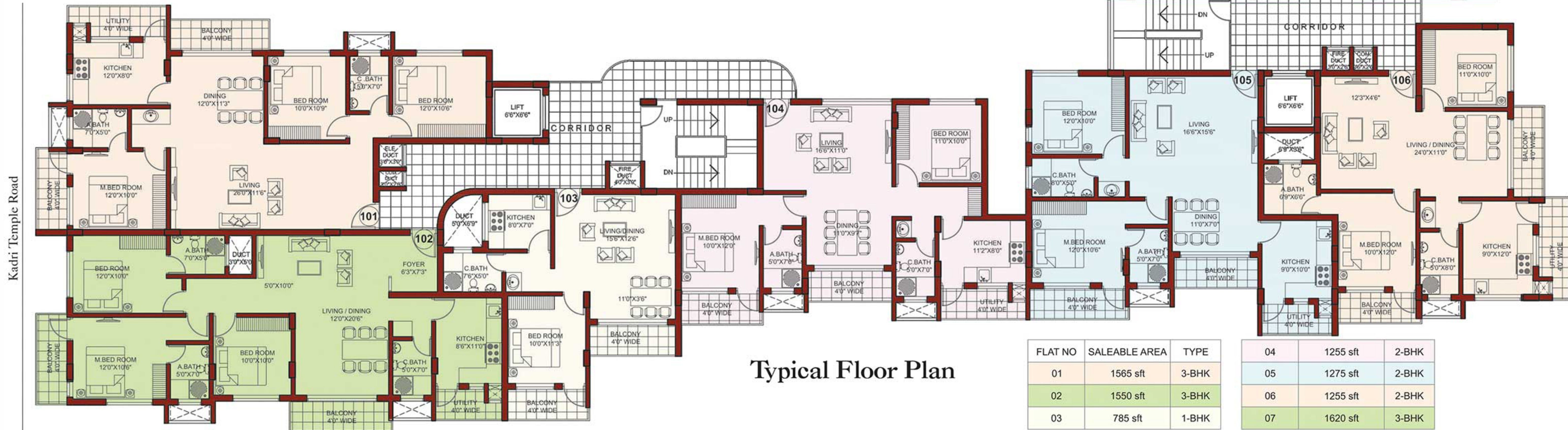
- ▶ Provision for exhaust fan, water purifier and washing machine
- ▶ Premium quality Stainless steel sink with drain board
- ▶ Polished and bull nosed black granite counter
- ▶ 2'0" glazed tile dado above platform

## IN-LAND® Credibility

For IN-LAND, a home is a great deal more than four walls and a roof. It is a heaven for the mind, body and soul. Hence our Residential complexes are replete with amenities for rejuvenation.

Every project under the IN-LAND banner is built on a formidable grid of strategic planning and forefront technology which is powered by the expertise of various consultants.

Indeed, every square inch of your home is built with the same passion for excellence practiced over 27 years that has created its own distinctive identity amongst the landmarks of India.



Typical Floor Plan

FLAT NO	SALEABLE AREA	TYPE
01	1565 sft	3-BHK
02	1550 sft	3-BHK
03	785 sft	1-BHK

04	1255 sft	2-BHK
05	1275 sft	2-BHK
06	1255 sft	2-BHK
07	1620 sft	3-BHK

# Every **IN-LAND**<sup>®</sup> Creation, a Mark of Distinction

## Ongoing Projects



**INLAND WINDSORS**  
Maryhill, Airport Road, Mangalore



**INLAND ECHELON**  
Ballalbagh, Off M.G. Road, Mangalore



**INLAND ESPANA**  
Near Bejai Church, Mangalore



**INLAND ELAN**  
Matadakani Road, Gandhinagar, Mangalore



**INLAND IMPALA (Res/Com)**  
Ullal



**INLAND SOVEREIGN**  
Mission Gori Road, Mannagudda, Mangalore



**INLAND ETHOS**  
Mahamayee Temple Road,  
Temple Square, Mangalore



**INLAND IMAAD**  
Hegdenagar, Bangalore



**INLAND EON**  
Matadakani Road, Gandhinagar, Mangalore

## Launching Soon



**INLAND SCION**  
Falnir, Mangalore



**INLAND MAYURA (Res/Com)**  
Puttur



**INLAND ESTORIA**  
B.V. Road, Valencia, Mangalore

## LOCATION MAP



SINCE 1986

## IN-LAND BUILDERS<sup>®</sup>

3rd Floor, INLAND ORNATE, Navbharath Circle,  
Mangalore- 575 003.

Ph: +91 824-2492180, 2491795, 2496110 Fax: +91 824-2496291

Mob: +91 99720 89099/ +91 98801 38015/ +91 99720 14055

Email: info@inlandbuilders.net Web: www.inlandbuilders.net



Find us on [f](https://www.facebook.com/INLANDINFRASTRUCTURE) /INLANDINFRASTRUCTURE

**Consulting Engineers**  
S. K. Associates  
Mangalore

**Structural Consultants**  
Vimal Anil  
Mangalore

Bangalore Office: 1st Floor, No.525, 8th Main, 5th Cross, HMT Layout, R.T.Nagar, Bangalore- 560 032.

TeleFax: +91 80-23545277, Cell: +91 98801 45145

This brochure is purely conceptual and is not a legal offering. The promoters / architects reserve the right to add / delete / alter any detail / specification / elevation mentioned herein.